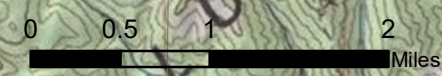
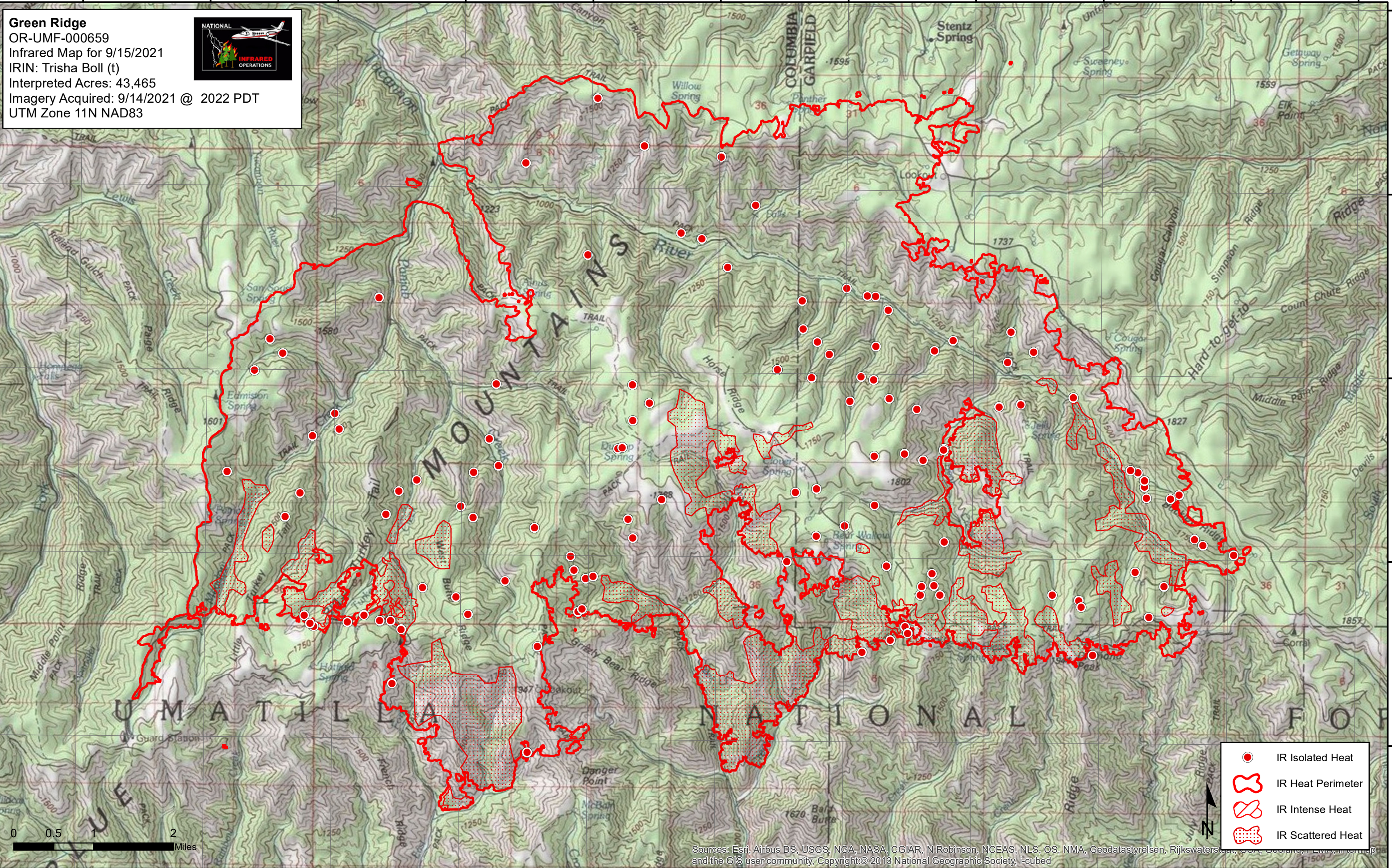






117°48'0"W 117°46'0"W 117°44'0"W 117°42'0"W 117°40'0"W 117°38'0"W 117°36'0"W 117°34'0"W 117°32'0"W 117°30'0"W 117°28'0"W

Green Ridge
OR-UMF-000659
Infrared Map for 9/15/2021
IRIN: Trisha Boll (t)
Interpreted Acres: 43,465
Imagery Acquired: 9/14/2021 @ 2022 PDT
UTM Zone 11N NAD83



-  IR Isolated Heat
-  IR Heat Perimeter
-  IR Intense Heat
-  IR Scattered Heat

Sources: Esri, Airbus DS, USGS, NGA, NASA, CGIAR, N Robinson, NCEAS, NLS, OS, NMA, Geodatasystem, Rijkswaterstaat, IGN, GeoBasis-DE, CNIG, and the GIS user community. Copyright © 2013 National Geographic Society, i-cubed

117°48'0"W 117°46'0"W 117°44'0"W 117°42'0"W 117°40'0"W 117°38'0"W 117°36'0"W 117°34'0"W 117°32'0"W 117°30'0"W 117°28'0"W