

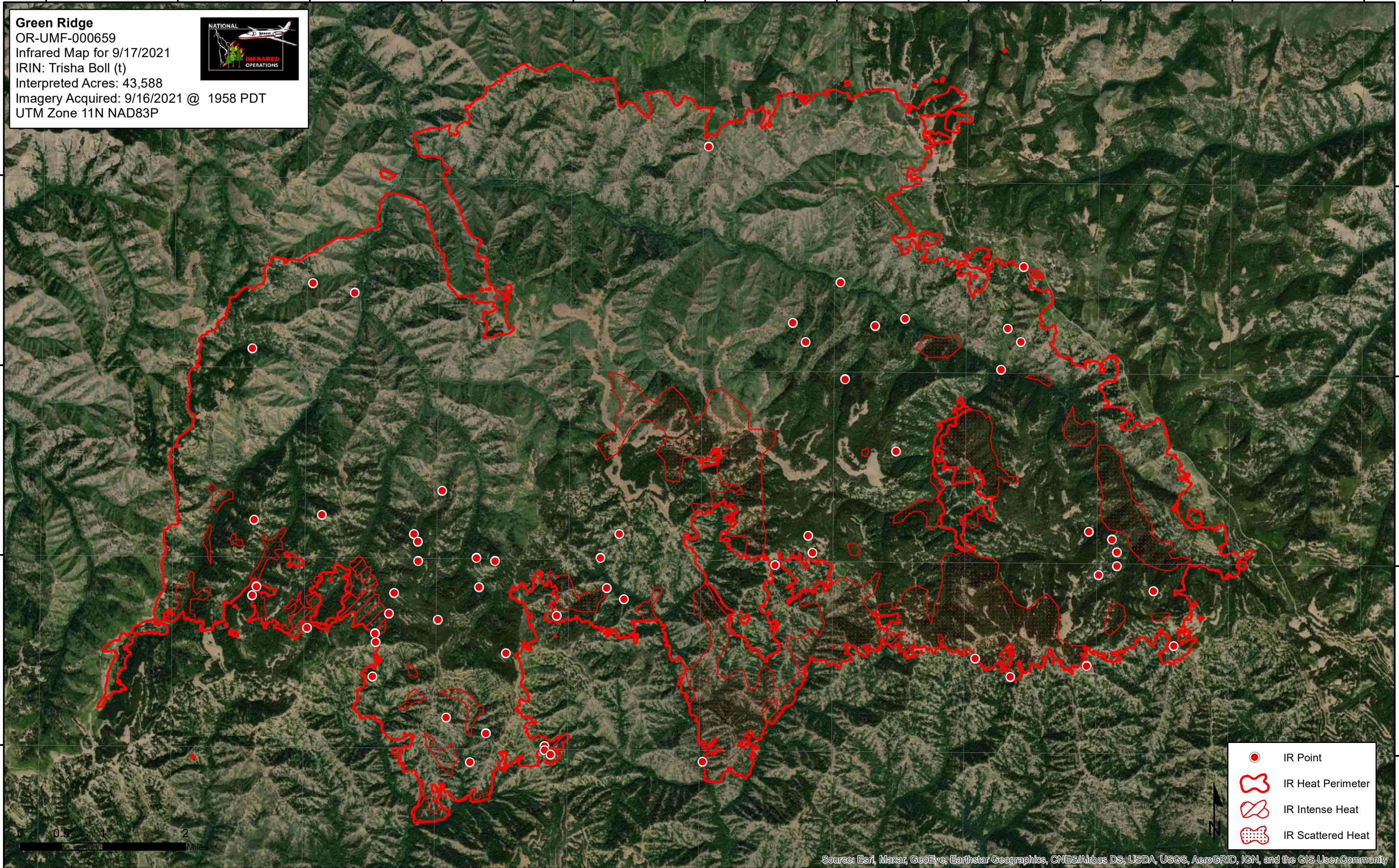
117°48'0"W 117°46'0"W 117°44'0"W 117°42'0"W 117°40'0"W 117°38'0"W 117°36'0"W 117°34'0"W 117°32'0"W 117°30'0"W 117°28'0"W





Green Ridge
OR-UMF-000659
Infrared Map for 9/17/2021
IRIN: Trisha Boll (t)
Interpreted Acres: 43,588
Imagery Acquired: 9/16/2021 @ 1958 PDT
UTM Zone 11N NAD83P



46°12'0"N
46°10'0"N
46°8'0"N
46°6'0"N

46°12'0"N
46°10'0"N
46°8'0"N
46°6'0"N



-  IR Point
-  IR Heat Perimeter
-  IR Intense Heat
-  IR Scattered Heat



Source: Esri, Maxar, GeoEye, Earthstar Geographics, CNES/Airbus DS, USDA, USGS, AeroGRID, IGN, and the GIS User Community

117°48'0"W 117°46'0"W 117°44'0"W 117°42'0"W 117°40'0"W 117°38'0"W 117°36'0"W 117°34'0"W 117°32'0"W 117°30'0"W 117°28'0"W