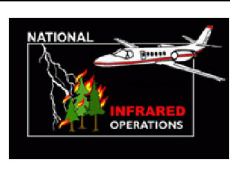


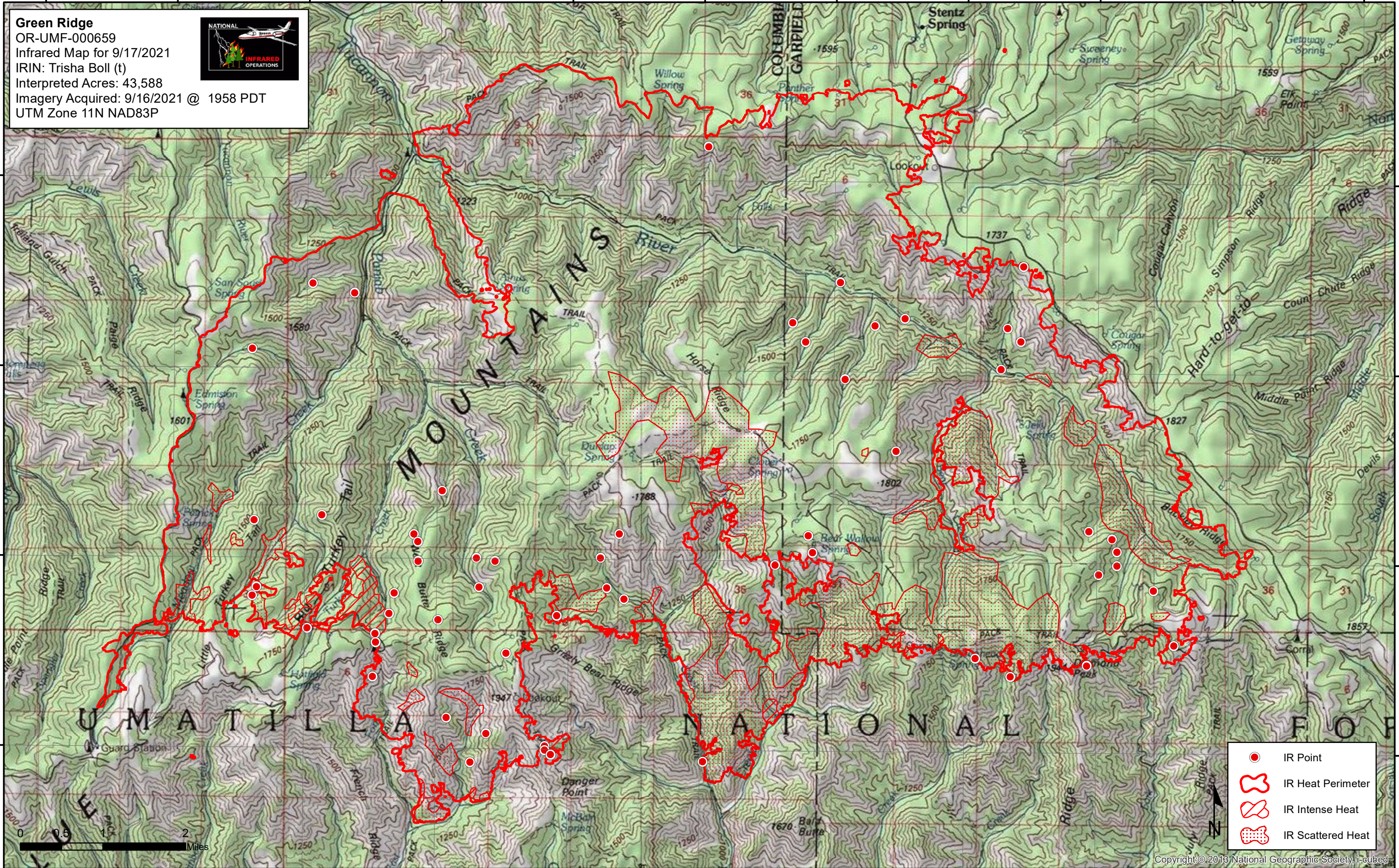
117°48'0"W 117°46'0"W 117°44'0"W 117°42'0"W 117°40'0"W 117°38'0"W 117°36'0"W 117°34'0"W 117°32'0"W 117°30'0"W 117°28'0"W

**Green Ridge**  
OR-UMF-000659  
Infrared Map for 9/17/2021  
IRIN: Trisha Boll (t)  
Interpreted Acres: 43,588  
Imagery Acquired: 9/16/2021 @ 1958 PDT  
UTM Zone 11N NAD83P

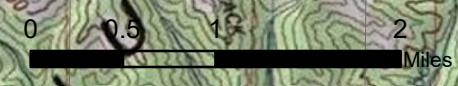


46°12'0"N  
46°10'0"N  
46°8'0"N  
46°6'0"N

46°12'0"N  
46°10'0"N  
46°8'0"N  
46°6'0"N



- IR Point
- IR Heat Perimeter
- IR Intense Heat
- IR Scattered Heat



117°48'0"W 117°46'0"W 117°44'0"W 117°42'0"W 117°40'0"W 117°38'0"W 117°36'0"W 117°34'0"W 117°32'0"W 117°30'0"W 117°28'0"W