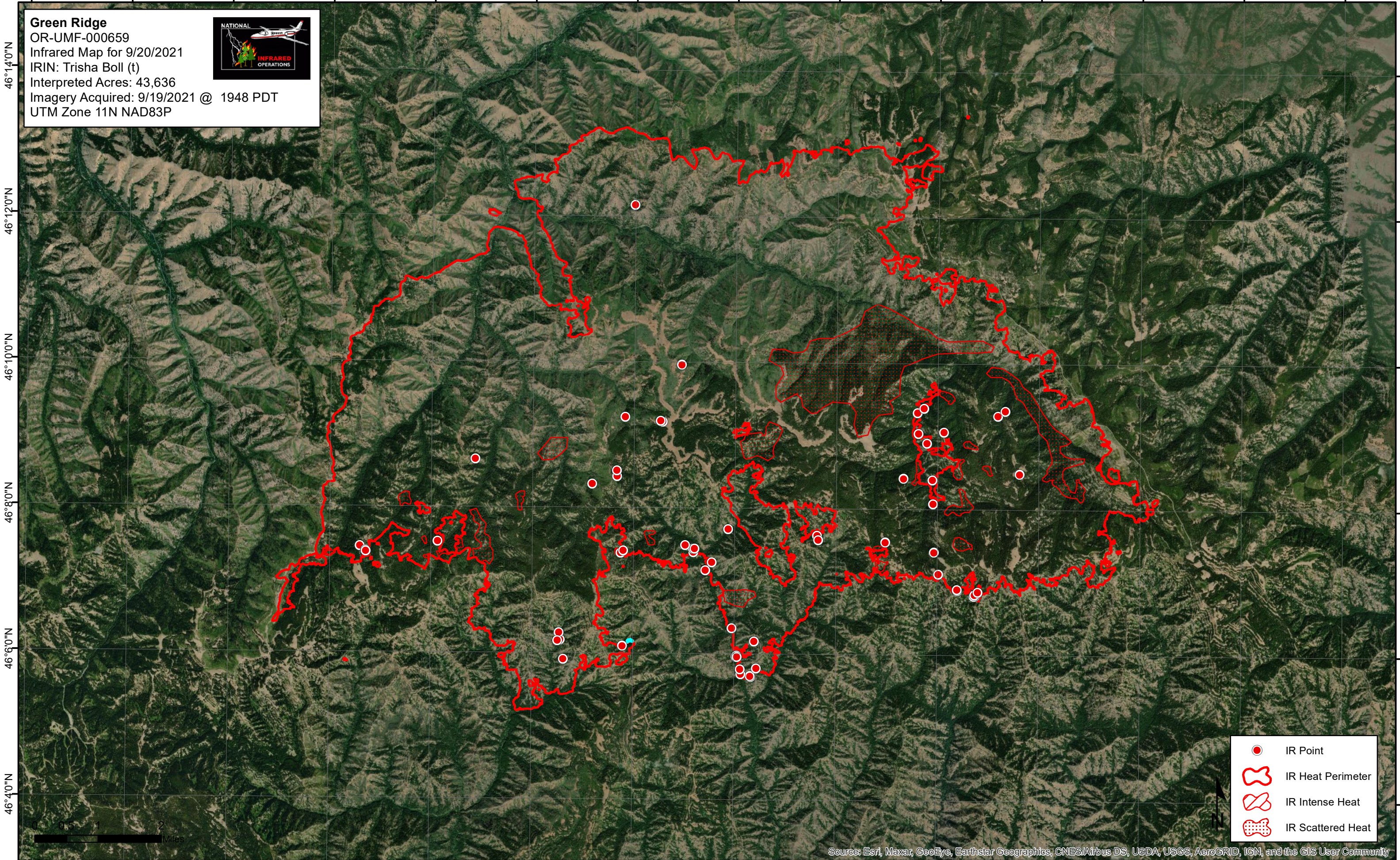


117°52'0"W 117°50'0"W 117°48'0"W 117°46'0"W 117°44'0"W 117°42'0"W 117°40'0"W 117°38'0"W 117°36'0"W 117°34'0"W 117°32'0"W 117°30'0"W 117°28'0"W 117°26'0"W







**Green Ridge**  
OR-UMF-000659  
Infrared Map for 9/20/2021  
IRIN: Trisha Boll (t)  
Interpreted Acres: 43,636  
Imagery Acquired: 9/19/2021 @ 1948 PDT  
UTM Zone 11N NAD83P



46°14'0"N  
46°12'0"N  
46°10'0"N  
46°8'0"N  
46°6'0"N  
46°4'0"N

46°14'0"N  
46°12'0"N  
46°10'0"N  
46°8'0"N  
46°6'0"N  
46°4'0"N



-  IR Point
-  IR Heat Perimeter
-  IR Intense Heat
-  IR Scattered Heat

Source: Esri, Maxar, GeoEye, Earthstar Geographics, CNES/Airbus DS, USDA, USGS, AeroGRID, IGN, and the GIS User Community

117°52'0"W 117°50'0"W 117°48'0"W 117°46'0"W 117°44'0"W 117°42'0"W 117°40'0"W 117°38'0"W 117°36'0"W 117°34'0"W 117°32'0"W 117°30'0"W 117°28'0"W 117°26'0"W