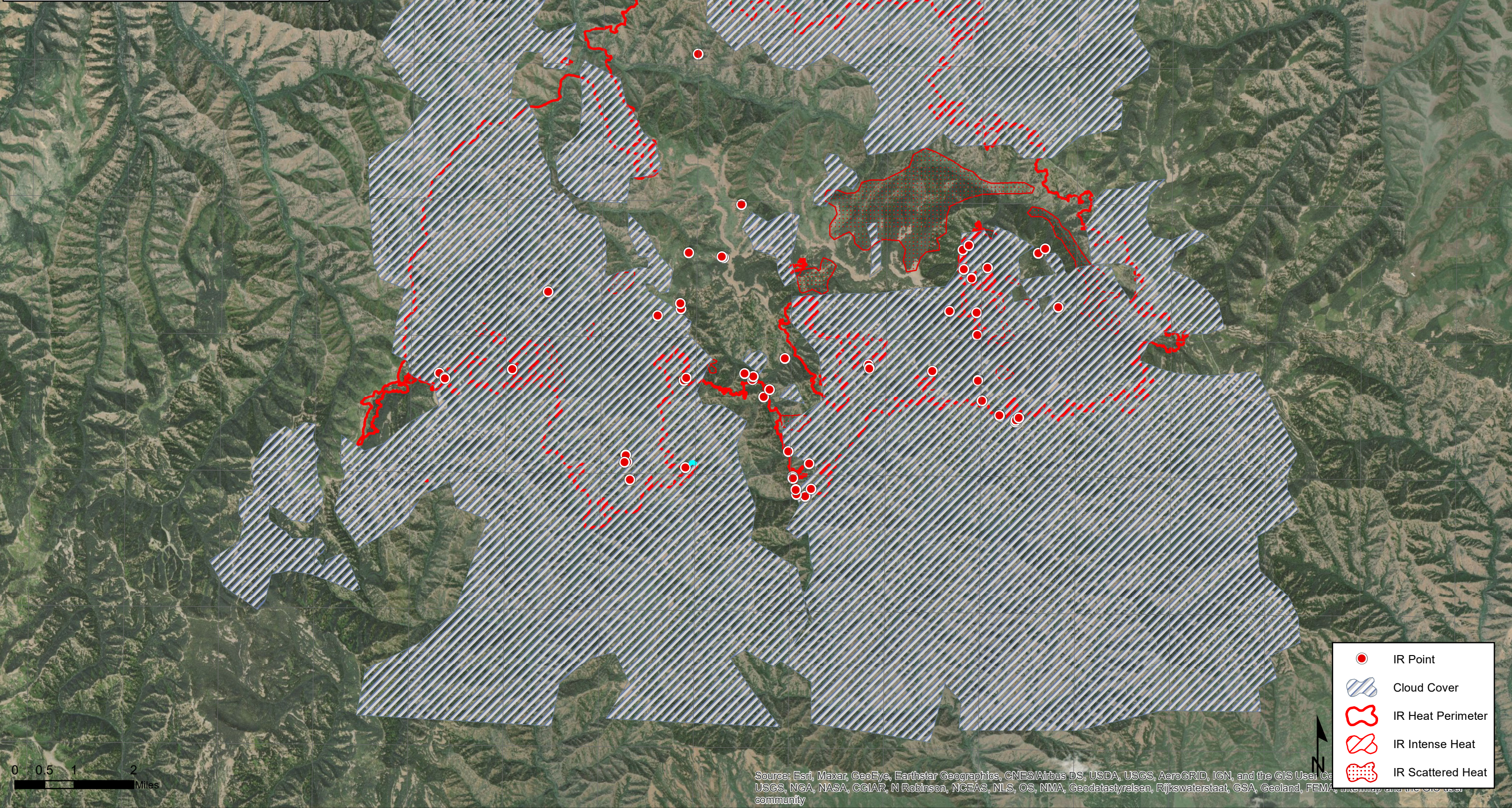
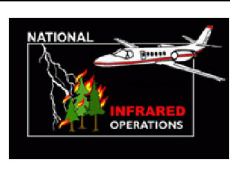







117°54'0"W 117°52'0"W 117°50'0"W 117°48'0"W 117°46'0"W 117°44'0"W 117°42'0"W 117°40'0"W 117°38'0"W 117°36'0"W 117°34'0"W 117°32'0"W 117°30'0"W 117°28'0"W 117°26'0"W 117°24'0"W

Green Ridge
OR-UMF-000659
Infrared Map for 9/20/2021
IRIN: Trisha Boll (t)
Interpreted Acres: 43,636
Imagery Acquired: 9/19/2021 @ 1948 PDT
UTM Zone 11N NAD83P



-  IR Point
-  Cloud Cover
-  IR Heat Perimeter
-  IR Intense Heat
-  IR Scattered Heat

Source: Esri, Maxar, GeoEye, Earthstar Geographics, CNES/Airbus DS, USDA, USGS, AeroGRID, IGN, and the GIS User Community
USGS, NGA, NASA, CGLAR, N Robinson, NCEAS, NLS, OS, NMA, Geodatasysteisen, Rijkswaterstaat, GSA, Geoland, FEMA, Intermap and the GIS User Community

117°54'0"W 117°52'0"W 117°50'0"W 117°48'0"W 117°46'0"W 117°44'0"W 117°42'0"W 117°40'0"W 117°38'0"W 117°36'0"W 117°34'0"W 117°32'0"W 117°30'0"W 117°28'0"W 117°26'0"W 117°24'0"W