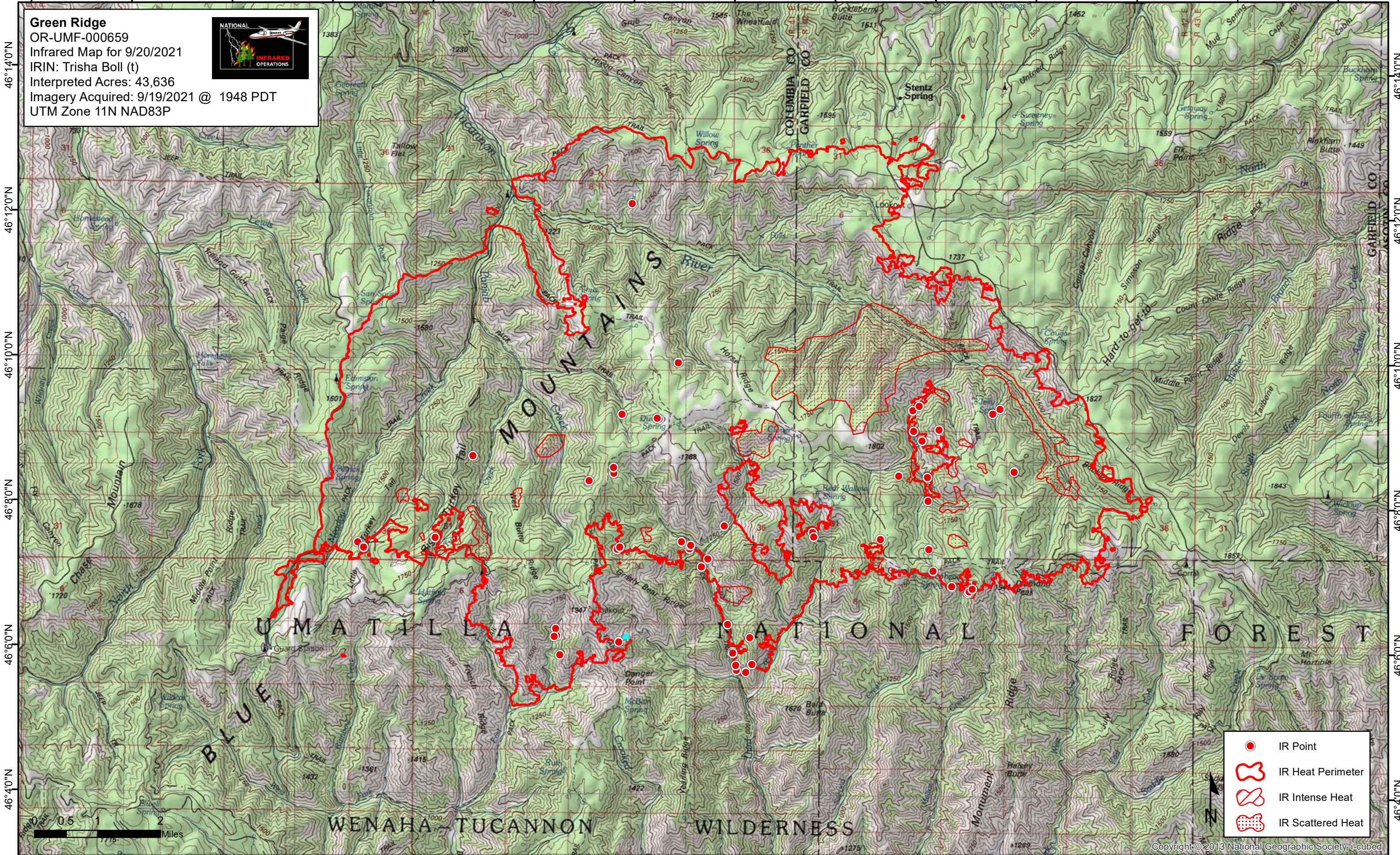


117°52'0"W 117°50'0"W 117°48'0"W 117°46'0"W 117°44'0"W 117°42'0"W 117°40'0"W 117°38'0"W 117°36'0"W 117°34'0"W 117°32'0"W 117°30'0"W 117°28'0"W 117°26'0"W



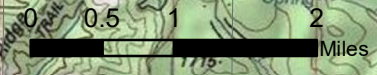
Green Ridge
OR-UMF-000659
Infrared Map for 9/20/2021
IRIN: Trisha Boll (t)
Interpreted Acres: 43,636
Imagery Acquired: 9/19/2021 @ 1948 PDT
UTM Zone 11N NAD83P



117°52'0"W 117°50'0"W 117°48'0"W 117°46'0"W 117°44'0"W 117°42'0"W 117°40'0"W 117°38'0"W 117°36'0"W 117°34'0"W 117°32'0"W 117°30'0"W 117°28'0"W 117°26'0"W

46°14'0"N
46°12'0"N
46°10'0"N
46°8'0"N
46°6'0"N
46°4'0"N

46°14'0"N
46°12'0"N
46°10'0"N
46°8'0"N
46°6'0"N
46°4'0"N



- IR Point
- IR Heat Perimeter
- ▨ IR Intense Heat
- ▩ IR Scattered Heat

Copyright © 2013 National Geographic Society, i-cubed