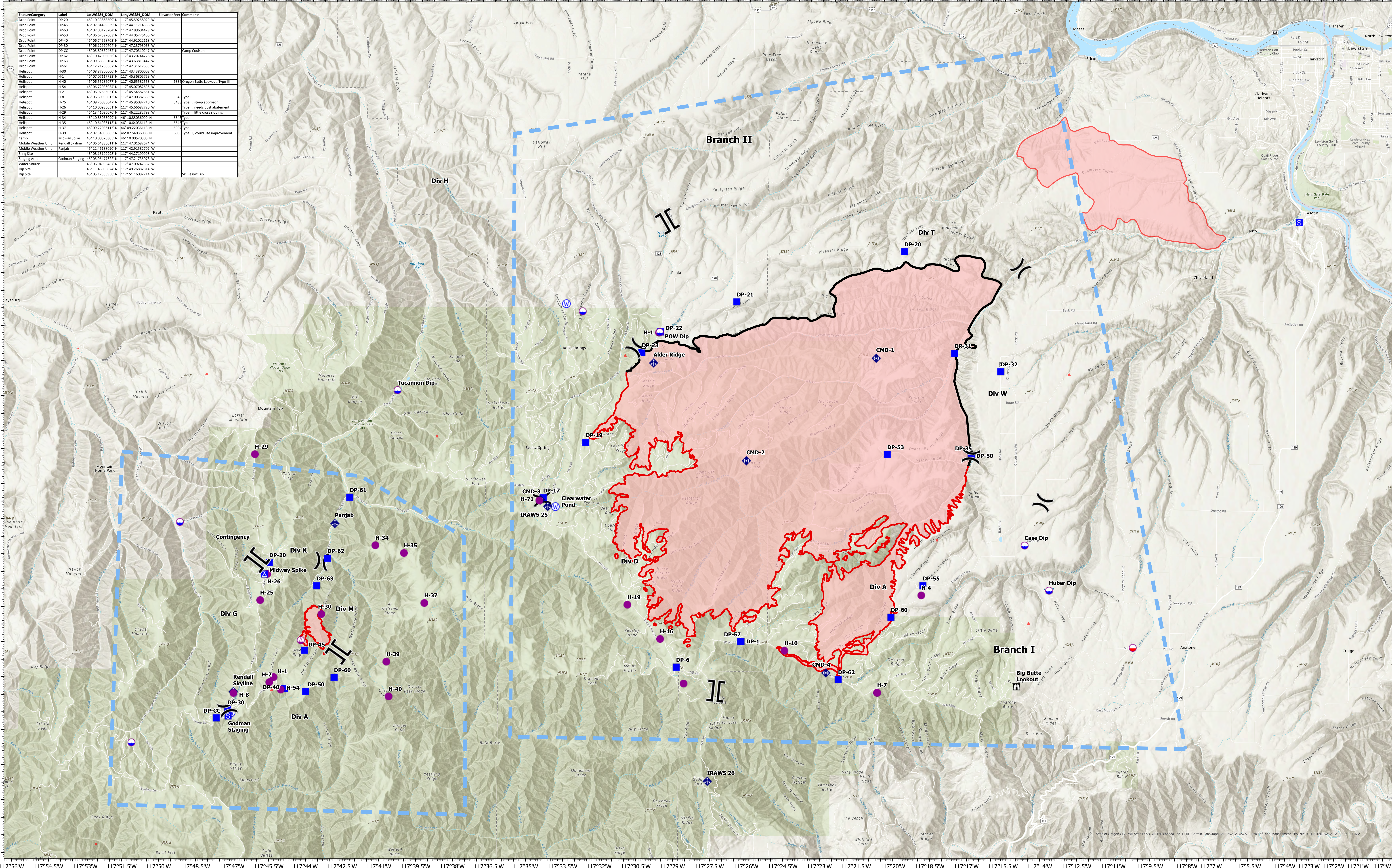


FeatureCategory	Label	LatWGS84_DDM	LongWGS84_DDM	ElevationFeet	Comments
Drop Point	DP-30	46° 13.1366009' N	117° 45.9556000' W		
Drop Point	DP-45	46° 07.8449939' N	117° 44.1174556' W		
Drop Point	DP-60	46° 07.58179203' N	117° 42.8960479' W		
Drop Point	DP-50	46° 08.6191003' N	117° 40.9257666' W		
Drop Point	DP-40	46° 06.74558703' N	117° 44.9102313' W		
Drop Point	DP-30	46° 06.1297004' N	117° 47.2379303' W		
Drop Point	DP-CC	46° 05.9839862' N	117° 47.7031020' W		Camp Louison
Drop Point	DP-62	46° 10.47098056' N	117° 43.20744726' W		
Drop Point	DP-63	46° 09.64838104' N	117° 43.8381344' W		
Drop Point	DP-62	46° 12.3268697' N	117° 43.2321925' W		
Helispot	H-30	46° 08.87600000' N	117° 43.43800003' W		
Helispot	H-3	46° 07.87117722' N	117° 45.5454263' W		6336 Oregon Butte Lookout, Type III
Helispot	H-2	46° 05.92036017' N	117° 47.02036017' W		5643 Type II
Helispot	H-54	46° 06.72036034' N	117° 45.07682626' W		5438 Type II, steep approach.
Helispot	H-26	46° 06.92836031' N	117° 45.5454263' W		type II, needs dust abatement.
Helispot	H-39	46° 05.92036017' N	117° 47.02036017' W		Type II, little cross sloping.
Helispot	H-34	46° 10.85036099' N	117° 45.85036099' W		5543 Type II
Helispot	H-35	46° 10.84036113' N	117° 46.64036113' W		5643 Type II
Helispot	H-37	46° 09.20360117' N	117° 49.20360117' W		5904 Type II
Helispot	H-39	46° 07.54036085' N	117° 47.54036085' W		6068 Type II, could use improvement.
Camp	Midway Spike	46° 10.00520303' N	117° 46.00520303' W		
Mobile Weather Unit	Kendall Skyline	46° 05.84836011' N	117° 47.02036011' W		
Mobile Weather Unit	Godman Staging	46° 11.48138990' N	117° 42.9182702' W		
Sling Site		46° 08.11319998' N	117° 44.2719998' W		
Staging Area		46° 05.84836011' N	117° 47.02036011' W		
Water Source		46° 05.04936487' N	117° 47.02947562' W		
Dip Site		46° 11.46036024' N	117° 49.26882814' W		SKI Resort Dip
Dip Site		46° 05.1733958' N	117° 51.1608274' W		



Air Ops Map

Green Ridge Fire
ORUMF-000659
July 16, 2021

- Dip Site
 - Mobile Retardant Base
 - Helispot
 - Sling Site
- Drop Point
- Camp
 - Staging Area
 - Lookout
 - Mobile Weather Unit
 - Repeater
 - Water Source
- Temporary Flight Restriction
 - Fire Edge
 - Contained Line
 - Event Polygon
 - Wildfire Daily Fire Perimeter

467 acres at 7/14/2021 1947 PDT

