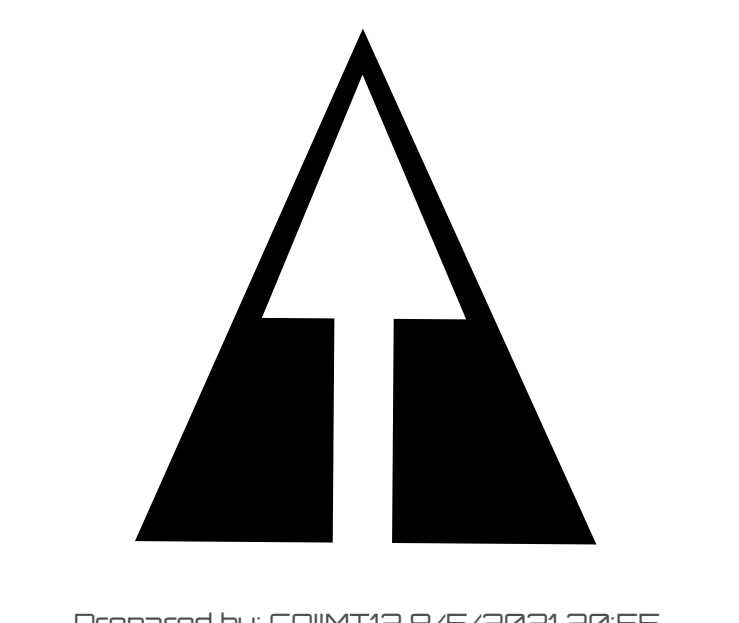
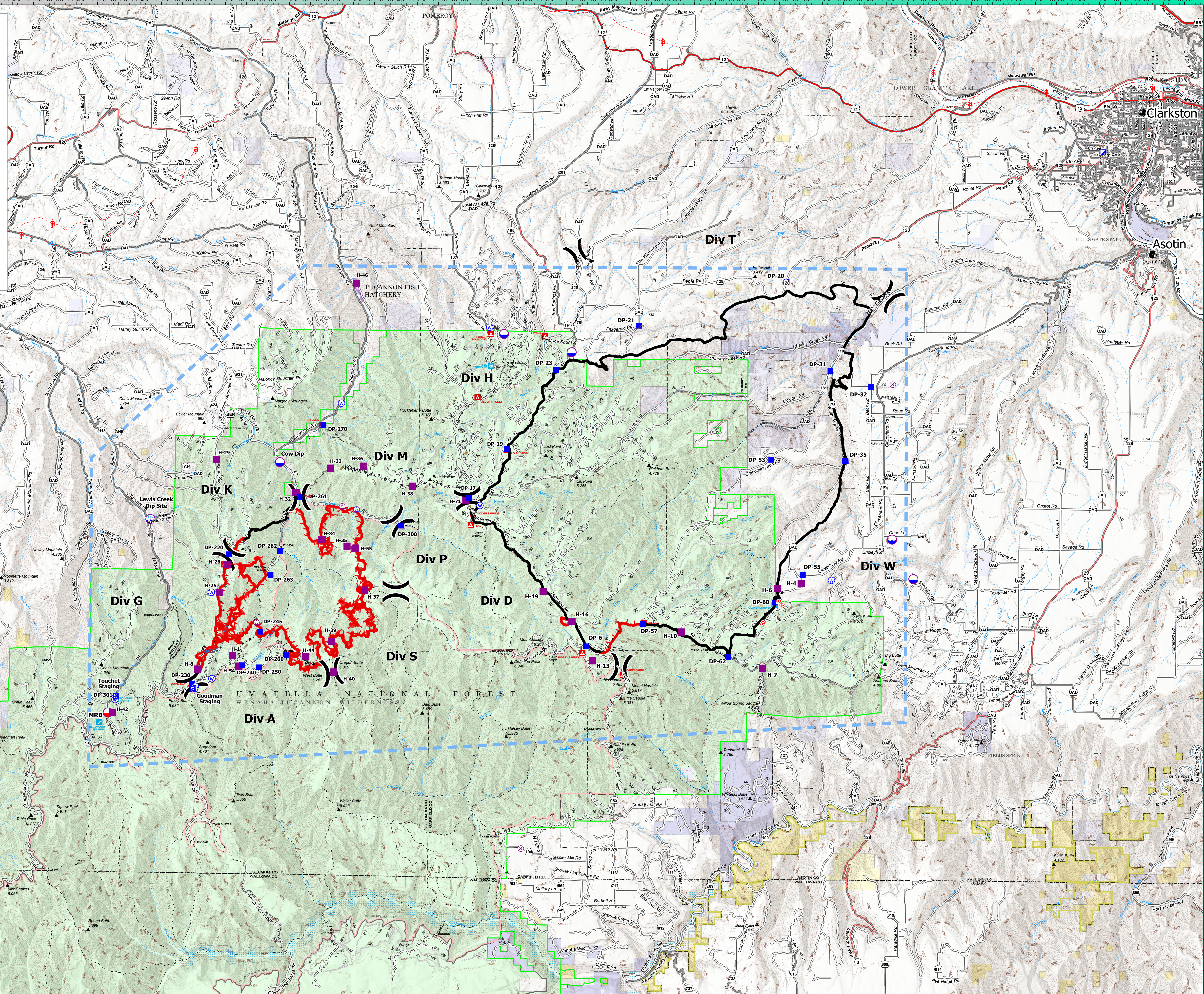


Incident Name	FC Point Type Label	Latitude WGS84 DDM	Longitude WGS84 DDM	
Lick Creek	Airstrip or Airport	46° 00.8797328' N	117° 31.87799687' W	
Lick Creek	Airstrip or Airport	46° 15.97714588' N	117° 14.63471680' W	
Lick Creek	Dip Site	46° 16.97778757' N	117° 26.65537629' W	
Lick Creek	Dip Site	46° 10.95228413' N	117° 14.65119406' W	
Lick Creek	Dip Site	46° 09.67195663' N	117° 13.65078429' W	
Lick Creek	Dip Site	46° 17.55924670' N	117° 32.82454250' W	
Lick Creek	Drop Point	46° 19.30724200' N	117° 19.62265351' W	
Lick Creek	Drop Point	46° 17.85438001' N	117° 26.49917997' W	
Lick Creek	Drop Point	46° 16.39445999' N	117° 30.39494949' W	
Lick Creek	Drop Point	46° 16.41470870' N	117° 17.55186778' W	
Lick Creek	Drop Point	46° 13.50439588' N	117° 16.83074574' W	
Lick Creek	Drop Point	46° 15.89549209' N	117° 15.65466698' W	
Lick Creek	Drop Point	46° 13.50139371' N	117° 16.85847137' W	
Lick Creek	Drop Point	46° 13.53195119' N	117° 20.29761210' W	
Lick Creek	Drop Point	46° 08.17955519' N	117° 26.26379494' W	
Lick Creek	Drop Point	46° 16.98960002' N	117° 29.61804001' W	
Lick Creek	Drop Point	46° 08.18539943' N	117° 26.25446126' W	
Lick Creek	Drop Point	46° 12.24028495' N	117° 34.39284481' W	
Lick Creek	Drop Point	46° 13.82403221' N	117° 32.66374647' W	
Lick Creek	Drop Point	46° 09.79651592' N	117° 18.81384244' W	
Lick Creek	Drop Point	46° 08.89930101' N	117° 20.11991154' W	
Lick Creek	Drop Point	46° 07.11659720' N	117° 28.90040253' W	
Lick Creek	Drop Point	46° 07.44556442' N	117° 28.90040253' W	
Lick Creek	Helispot	46° 16.96736262' N	117° 29.6832571' W	
Lick Creek	Helispot	46° 12.16336181' N	117° 34.54782563' W	
Lick Creek	Helispot	46° 09.21341100' N	117° 30.91283859' W	
Lick Creek	Helispot	46° 08.24533659' N	117° 29.56708545' W	
Lick Creek	Helispot	46° 06.97763208' N	117° 28.59035758' W	
Lick Creek	Helispot	46° 07.92947680' N	117° 24.4723181' W	
Lick Creek	Helispot	46° 09.5229996' N	117° 18.8800003' W	
Lick Creek	Helispot	46° 06.75000002' N	117° 20.67000002' W	
Lick Creek	Helispot	46° 09.36000001' N	117° 19.97000001' W	
Lick Creek	Water Source	Clearwater Pond	46° 11.9924218' N	117° 33.88832560' W
Lick Creek	Water Source		46° 11.77102005' N	117° 34.9691103' W
Lick Creek	Water Source		46° 09.62361360' N	117° 17.47014720' W

Incident Name	FC Point Type Label	Latitude WGS84 DDM	Longitude WGS84 DDM	
Green Ridge	Water Source	Tucannon Dip	46° 15.27214832' N	117° 40.39297073' W
Green Ridge	Drop Point	DP-220	46° 10.33868509' N	117° 45.59258029' W
Green Ridge	Drop Point	DP-245	46° 07.0817904' N	117° 44.1174556' W
Green Ridge	Drop Point	DP-260	46° 07.0817904' N	117° 42.8960479' W
Green Ridge	Drop Point	DP-250	46° 06.68338364' N	117° 44.1343760' W
Green Ridge	Drop Point	DP-240	46° 06.74558697' N	117° 44.91022113' W
Green Ridge	Helispot	H-1	46° 07.07117722' N	117° 45.36805759' W
Green Ridge	Drop Point	DP-230	46° 06.12970704' N	117° 47.23793063' W
Green Ridge	Staging Area	Goodman Staging	46° 05.9547622' N	117° 47.21735078' W
Green Ridge	Drop Point	DP-262	46° 10.4709656' N	117° 43.20744728' W
Green Ridge	Drop Point	DP-263	46° 09.68358104' N	117° 43.63813442' W
Green Ridge	Drop Point	DP-261	46° 12.2128667' N	117° 42.3167655' W
Green Ridge	Dip Site	Lewis Creek Dip Site	46° 11.46036024' N	117° 49.26882814' W
Green Ridge	Helispot	H-40	46° 06.55236077' N	117° 40.6582553' W
Green Ridge	Helispot	H-54	46° 06.7202604' N	117° 45.0702636' W
Green Ridge	Helispot	H-8	46° 06.60936617' N	117° 47.02026469' W
Green Ridge	Helispot	H-25	46° 09.10774773' N	117° 46.02312327' W
Green Ridge	Helispot	H-26	46° 10.02936051' N	117° 45.66682720' W
Green Ridge	Helispot	H-29	46° 13.41036070' N	117° 46.2282798' W
Green Ridge	Helispot	H-34	46° 10.85036099' N	117° 41.25082654' W
Green Ridge	Helispot	H-35	46° 10.86026113' N	117° 40.95289190' W
Green Ridge	Helispot	H-37	46° 09.23036107' N	117° 39.23082580' W
Green Ridge	Helispot	H-39	46° 07.54036085' N	117° 40.76082573' W
Green Ridge	Helispot	H-32	46° 12.37236098' N	117° 42.47882706' W
Green Ridge	Drop Point	DP-270	46° 14.56947382' N	117° 41.2302333' W
Green Ridge	Drop Point	DP-280	46° 13.2223835' N	117° 40.12989345' W
Green Ridge	Helispot	H-33	46° 05.1763604' N	117° 40.95289190' W
Green Ridge	Helispot	H-38	46° 13.16700002' N	117° 40.88200004' W
Green Ridge	Helispot	H-36	46° 12.60036155' N	117° 37.04082613' W
Green Ridge	Helispot	H-36	46° 13.24036142' N	117° 39.35082674' W
Green Ridge	Helispot	H-44	46° 07.04500002' N	117° 41.96000001' W
Green Ridge	Helispot	H-46	46° 19.16999999' N	117° 39.73999999' W
Green Ridge	Helispot	H-71	46° 12.16336181' N	117° 34.54782563' W
Green Ridge	Drop Point	DP-17	46° 12.24028495' N	117° 34.39284481' W
Green Ridge	Drop Point	DP-19	46° 13.82403221' N	117° 32.66374647' W
Green Ridge	Dip Site	Cow Dip	46° 13.34336098' N	117° 43.24882747' W
Green Ridge	Drop Point	DP-300	46° 11.3219609' N	117° 37.56443327' W
Green Ridge	Staging Area	Touchet Staging	46° 05.71499949' N	117° 50.79819728' W
Green Ridge	Drop Point	DP-301	46° 05.54859959' N	117° 50.84236715' W
Green Ridge	Helispot	H-55	46° 10.57836115' N	117° 39.69082625' W



- Airstrip or Airport
- Dip Site
- Mobile Retardant Base
- Helispot
- Sling Site
- X Division Break
- Incident Command Post
- Drop Point
- Staging Area
- Hot Spot - Spot Fire
- Water Source
- Temporary Flight Restriction
- Completed Fuel Break
- Completed Mixed Construction Line
- Completed Road as Line
- Planned Fuel Break
- Planned Hand Line
- Bridge
- Access or Improved Road
- Fence
- Other
- Repair Line
- Temporary Flight Restriction
- Planned Door Line
- Contained Line
- Wildlife Daily Fire Perimeter
- Forest Service Land
- American Indian Lands
- State Public Lands
- Other State Lands
- U.S. Fish & Wildlife Service Lands
- Bureau of Land Management, Undesignated
- Private, Local Government, Undesignated

AIR OPERATIONS

Green Ridge

OR-UMF-000659

8/6/21



Green Ridge
OR-UMF-000659
AIR OPS
8/6/21