

Suppression Repair

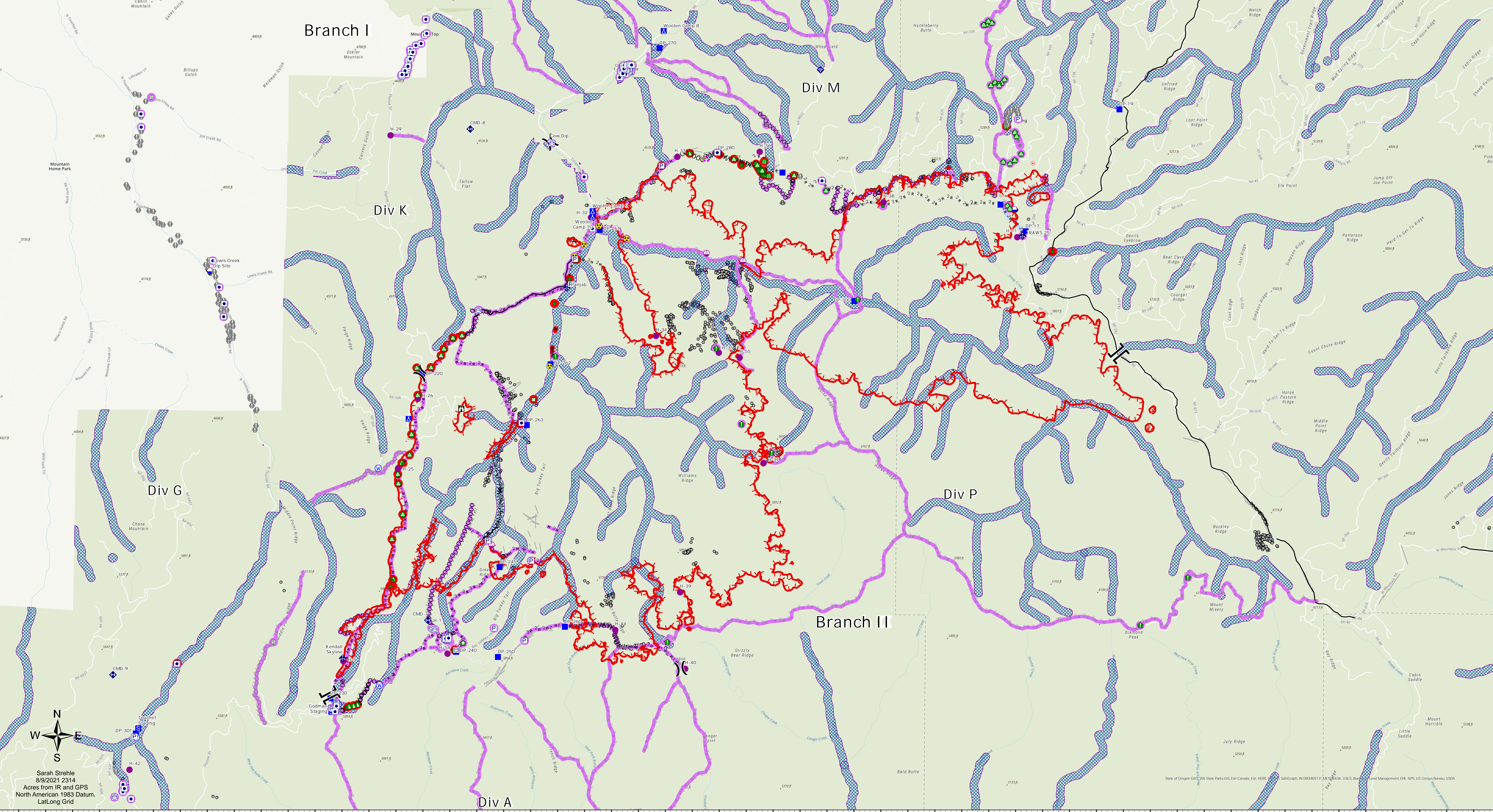
Green Ridge
ORUMF659
8/10/2021



23,126 acres at 08/09/2021 0017



Air Operations <ul style="list-style-type: none">Dip SiteMobile Retardant BaseHelispotSling Site	Operations <ul style="list-style-type: none">Hot Spot - Spot FireValue at RiskOtherGateBridgeRepairClosureCampStaging Area	<ul style="list-style-type: none">Retardant in Avoidance AreaResource LocationRepair PointLanding or Log DeckDozer PushCommunicationsMobile Weather UnitInternet AccessRepeaterSafetyHazardWaterWater Source	Ops Completed <ul style="list-style-type: none">Completed Dozer LineCompleted Fuel BreakCompleted Hand LineCompleted Mxd Construction LineCompleted Road as LinePlanned Dozer LinePlanned Fuel BreakPlanned Hand LinePlanned Road as LineHighlighted Feature	Other <ul style="list-style-type: none">Repair LineAir OpsRouteFire PerimeterFire EdgeContained LineAquatic Avoidance AreasDrop Points: 2021Drop Lines: 2021
--	---	--	--	---



Sarah Strehle
8/9/2021 2314
Acres from IR and GPS
North American 1983 Datum.
LatLong Grid

State of Oregon GEOG, WA State Parks GIS, Esri Canada, Esri HERE, DeLorme, Swatchburn, USGS, NOAA, NPS, US Census Bureau, USDA