



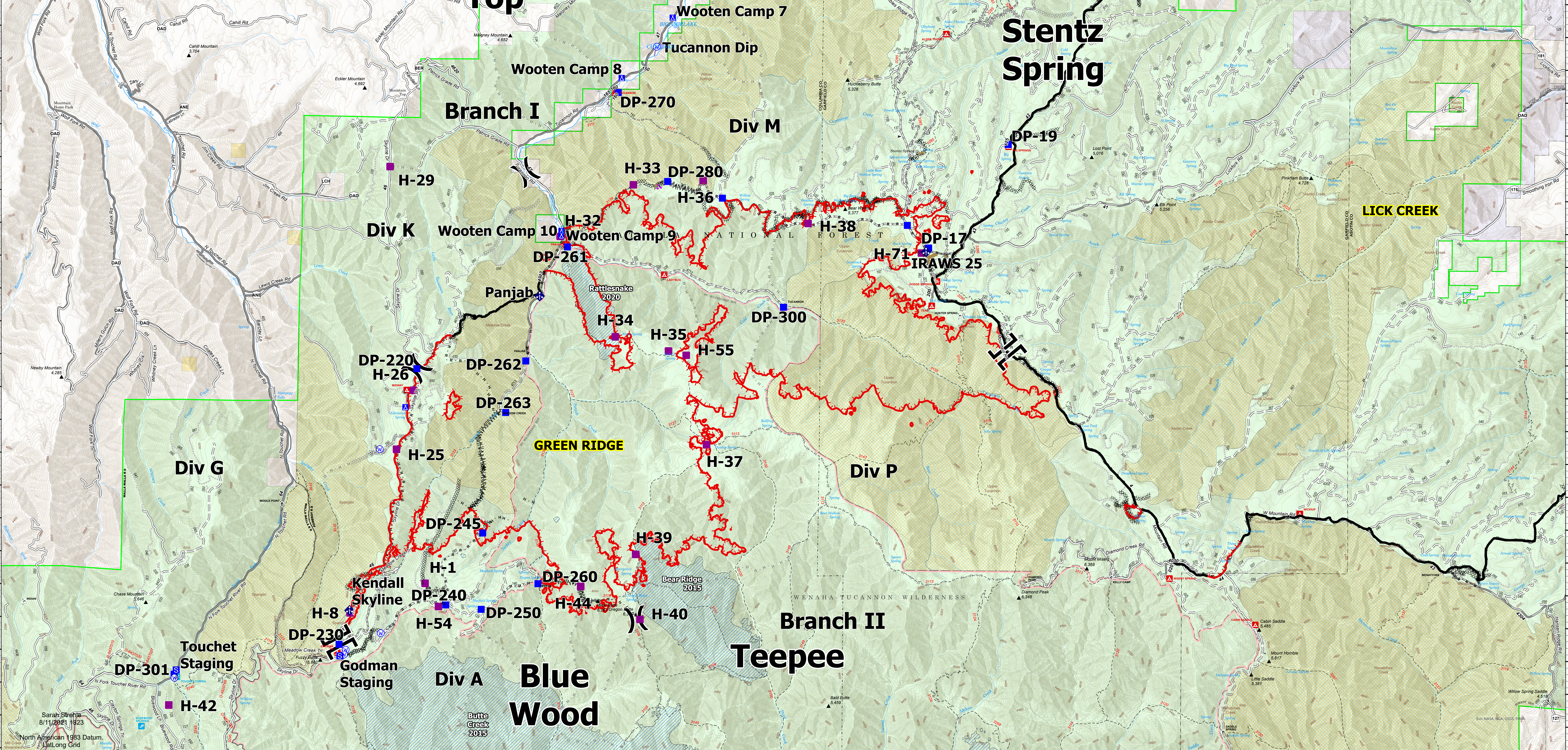


117°54.5'W 117°53.5'W 117°52.5'W 117°51.5'W 117°50.5'W 117°49.5'W 117°48.5'W 117°47.5'W 117°46.5'W 117°45.5'W 117°44.5'W 117°43.51'W 117°42.5'W 117°41.5'W 117°40.5'W 117°39.5'W 117°38.5'W 117°37.5'W 117°36.5'W 117°35.5'W 117°34.5'W 117°33.5'W 117°32.5'W 117°31.5'W 117°30.5'W 117°29.5'W 117°28.51'W 117°27.5'W 117°26.5'W 117°25.5'W 117°24.5'W 117°23.5'W 117°22.5'W 117°21.5'W 117°20.5'W

**Operations**  
 Green Ridge  
 OR-UMF-000659  
 Aug 12, 2021  
 25,250 acres as of 8/10/2021@2035

<b>Air Operations</b>	<b>Ops Planned</b>	<b>Reference</b>
● Mobile Retardant Base	— Planned Dozer Line	— Access or Improved Road
● Helispot	— Completed Fuel Break	— Fence
<b>Assignment Breaks</b>	— Completed Hand Line	— Highlighted Feature
X Division Break	— Completed Mixed Construction Line	— Other
● Drop Point	— Completed Road as Line	— Repair Line
● Camp	— Fire Perimeter	
● Staging Area	— Fire Edge	
<b>Communications</b>	— Contained Line	
● Mobile Weather Unit	— Other	
● Water Source	— Wildfire Daily Fire Perimeter	
● Ops Completed	— Fire History	
● Completed Dozer Line	— Boundary Designated Roadless Area	
	— Polygon Type	
	— U.S. Fish & Wildlife Service Lands	
	— Bureau of Land Management Lands	



117°54.5'W 117°53.5'W 117°52.5'W 117°51.5'W 117°50.5'W 117°49.5'W 117°48.5'W 117°47.5'W 117°46.5'W 117°45.5'W 117°44.5'W 117°43.51'W 117°42.5'W 117°41.5'W 117°40.5'W 117°39.5'W 117°38.5'W 117°37.5'W 117°36.5'W 117°35.5'W 117°34.5'W 117°33.5'W 117°32.5'W 117°31.5'W 117°30.5'W 117°29.5'W 117°28.51'W 117°27.5'W 117°26.5'W 117°25.5'W 117°24.5'W 117°23.5'W 117°22.5'W 117°21.5'W 117°20.5'W