



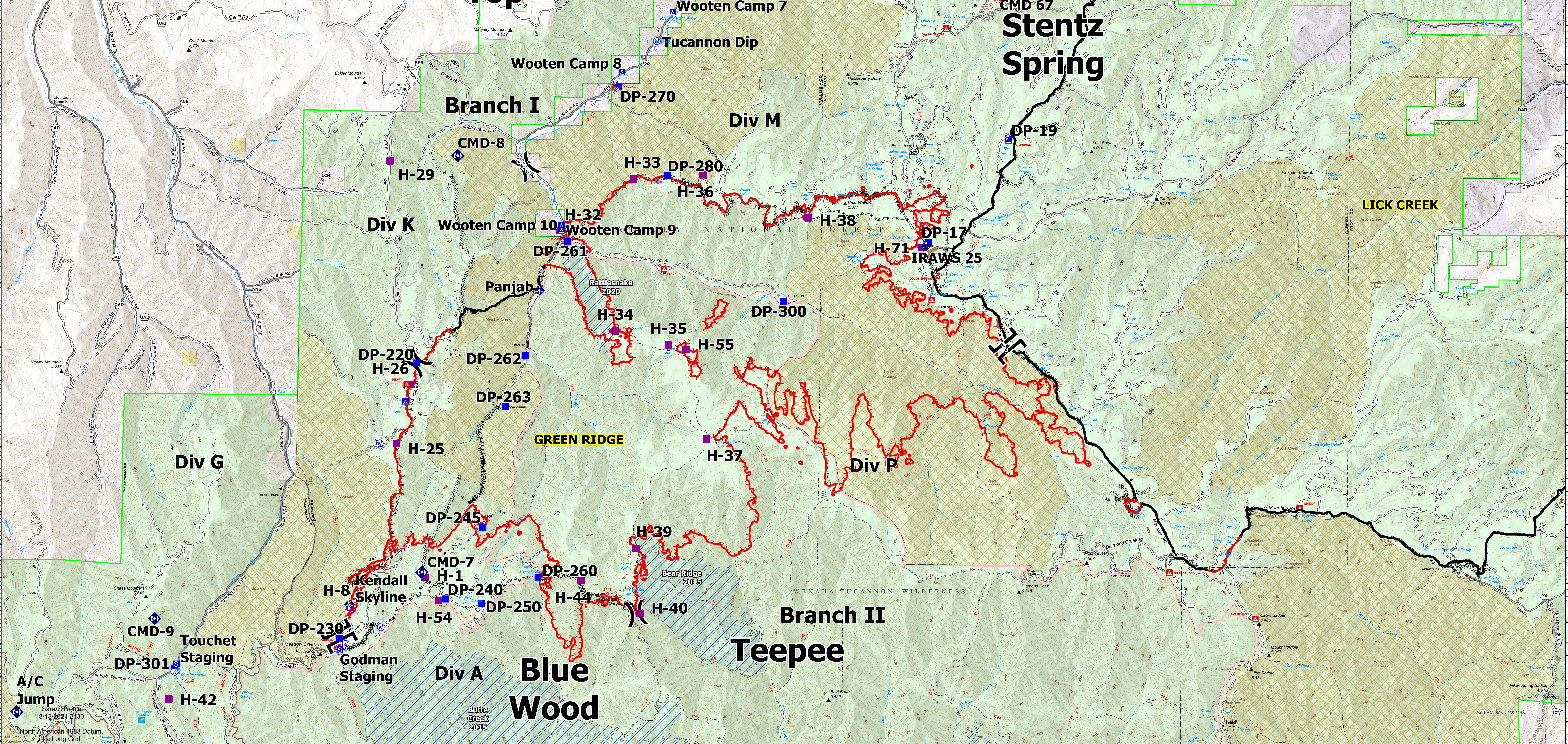


117°54.5'W 117°53.5'W 117°52.5'W 117°51.5'W 117°50.5'W 117°49.5'W 117°48.5'W 117°47.5'W 117°46.5'W 117°45.5'W 117°44.5'W 117°43.51'W 117°42.5'W 117°41.5'W 117°40.5'W 117°39.5'W 117°38.5'W 117°37.5'W 117°36.5'W 117°35.5'W 117°34.5'W 117°33.5'W 117°32.5'W 117°31.5'W 117°30.5'W 117°29.5'W 117°28.51'W 117°27.5'W 117°26.5'W 117°25.5'W 117°24.5'W 117°23.5'W 117°22.5'W 117°21.5'W 117°20.5'W

Operations
Green Ridge
OR-UMF-000659
Aug 14, 2021
29,759 acres as of 8/12/2021@2314

Air Operations	Ops Completed	Repair
● Mobile Retardant Base	— Completed Dozer Line	— Repair Line
● Helispot	— Completed Fuel Break	— Air Ops
Assignment Breaks	— Completed Hand Line	— Route
X Division Break	— Completed Mixed Construction Line	— Fire Perimeter
— Branch Break	— Completed Road as Line	— Fire Edge
Logistics	Ops Planned	— Contained Line
● Incident Command Post	— Planned Dozer Line	— Polygon Type
● Drop Point	— Planned Fuel Break	— Fire History
● Camp	— Planned Hand Line	— Wildfire Daily Fire Perimeter
● Staging Area	— Planned Mixed Construction Line	— Other
Communications	— Planned Road as Line	— Boundary Designated Roadless Area
● Mobile Weather Unit	Reference	— Administrative FS Boundary
● Repeater	— Access or Improved Road	— Federal Wilderness Boundary
● Water Source	— Fence	— Other State Lands
	— Highlighted Feature	— U.S. Fish & Wildlife Service Lands
	— Other	— Bureau of Land Management Lands



117°54.5'W 117°53.5'W 117°52.5'W 117°51.5'W 117°50.5'W 117°49.5'W 117°48.5'W 117°47.5'W 117°46.5'W 117°45.5'W 117°44.5'W 117°43.51'W 117°42.5'W 117°41.5'W 117°40.5'W 117°39.5'W 117°38.5'W 117°37.5'W 117°36.5'W 117°35.5'W 117°34.5'W 117°33.5'W 117°32.5'W 117°31.5'W 117°30.5'W 117°29.5'W 117°28.51'W 117°27.5'W 117°26.5'W 117°25.5'W 117°24.5'W 117°23.5'W 117°22.5'W 117°21.5'W 117°20.5'W