

# Public Information

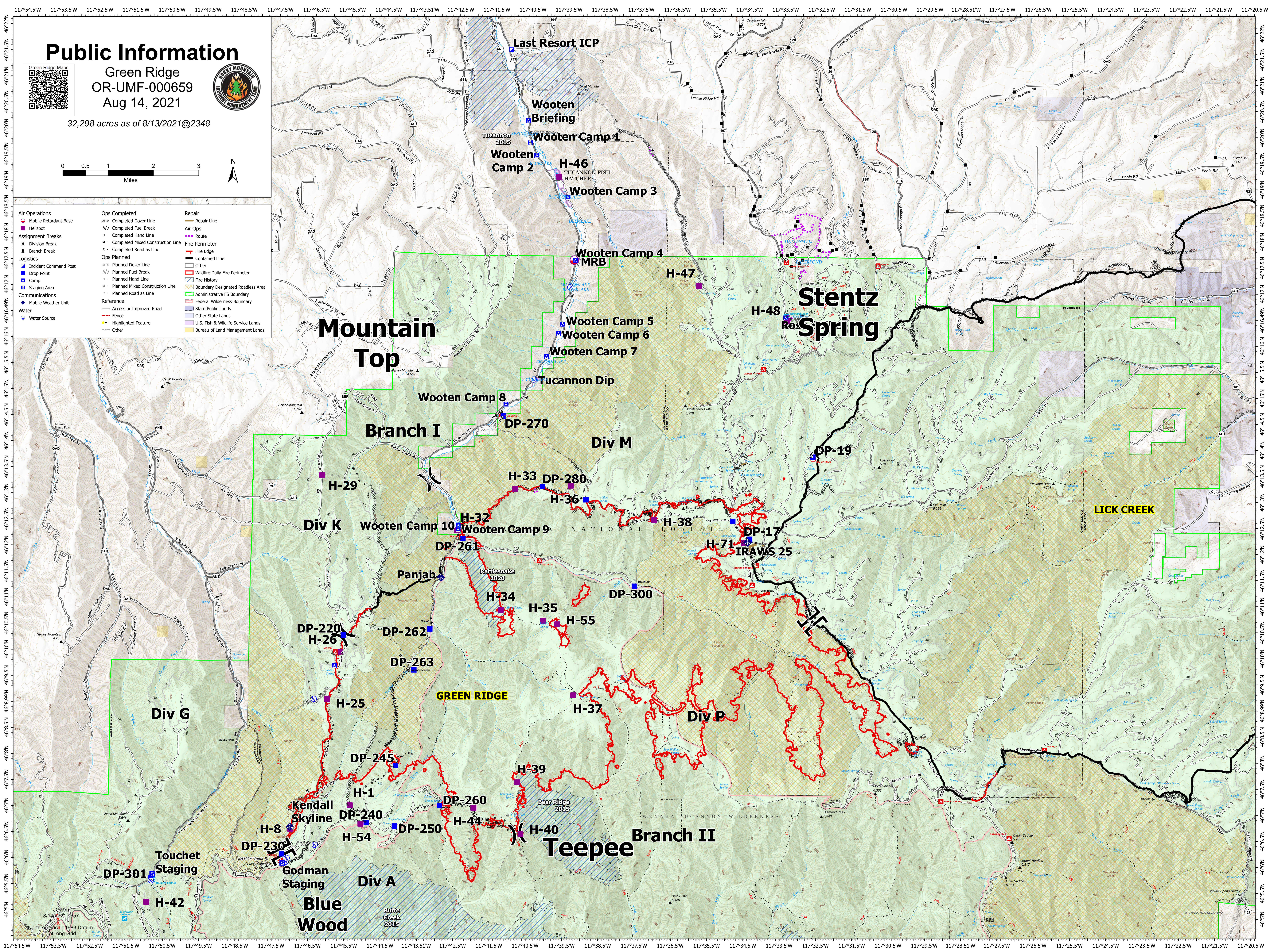
Green Ridge  
OR-UMF-000659  
Aug 14, 2021



32,298 acres as of 8/13/2021@2348



<b>Air Operations</b> <ul style="list-style-type: none"><li>Mobile Retardant Base</li><li>Helispot</li></ul>	<b>Assignment Breaks</b> <ul style="list-style-type: none"><li>Division Break</li><li>Branch Break</li></ul>	<b>Logistics</b> <ul style="list-style-type: none"><li>Incident Command Post</li><li>Drop Point</li><li>Camp</li><li>Staging Area</li></ul>	<b>Communications</b> <ul style="list-style-type: none"><li>Mobile Weather Unit</li><li>Water Source</li></ul>	<b>Ops Completed</b> <ul style="list-style-type: none"><li>Completed Dozer Line</li><li>Completed Fuel Break</li><li>Completed Hand Line</li><li>Completed Mixed Construction Line</li><li>Completed Road as Line</li></ul>	<b>Ops Planned</b> <ul style="list-style-type: none"><li>Planned Dozer Line</li><li>Planned Fuel Break</li><li>Planned Hand Line</li><li>Planned Mixed Construction Line</li><li>Planned Road as Line</li></ul>	<b>Repair</b> <ul style="list-style-type: none"><li>Repair Line</li><li>Air Ops</li></ul>	<b>Reference</b> <ul style="list-style-type: none"><li>Access or Improved Road</li><li>Fence</li><li>Highlighted Feature</li><li>Other</li></ul>	<b>Other</b> <ul style="list-style-type: none"><li>Fire Edge</li><li>Fire Perimeter</li><li>Other</li><li>Wildfire Daily Fire Perimeter</li><li>Fire History</li><li>Boundary Designated Roadless Area</li><li>Administrative FS Boundary</li><li>Federal Wilderness Boundary</li><li>State Public Lands</li><li>Other State Lands</li><li>U.S. Fish &amp; Wildlife Service Lands</li><li>Bureau of Land Management Lands</li></ul>
--	--	---	--	---	---	---	--	---



Last Resort ICP

Wooten Briefing

Wooten Camp 1

Wooten Camp 2

H-46

Wooten Camp 3

Wooten Camp 4

MRB

H-47

H-48

Stentz Spring

Wooten Camp 5

Wooten Camp 6

Wooten Camp 7

Tucannon Dip

Wooten Camp 8

DP-270

Branch I

Div M

DP-19

H-29

H-33

DP-280

H-36

Div K

Wooten Camp 10

Wooten Camp 9

H-38

DP-17

IRAWS 25

Panjab

H-34

H-35

H-55

DP-300

DP-220

H-26

DP-262

DP-263

H-25

GREEN RIDGE

H-37

Div P

DP-245

H-1

DP-260

H-39

Kendall Skyline

DP-240

DP-250

H-44

H-40

Teepee

Branch II

Touchet Staging

DP-301

H-42

Godman Staging

Div A

Blue Wood

Butte Creek 2015

LICK CREEK

North American 1983 Datum  
Datum  
Datum