

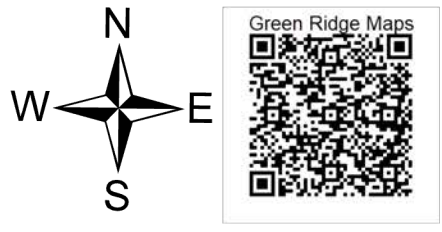
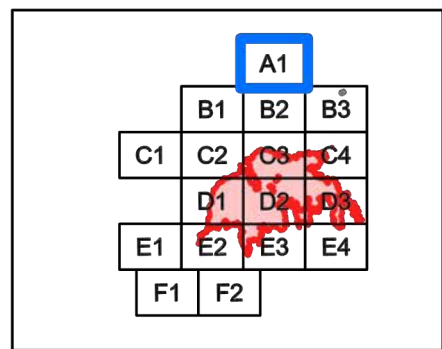


**IAP**  
**Green Ridge**  
 OR-UMF-000659

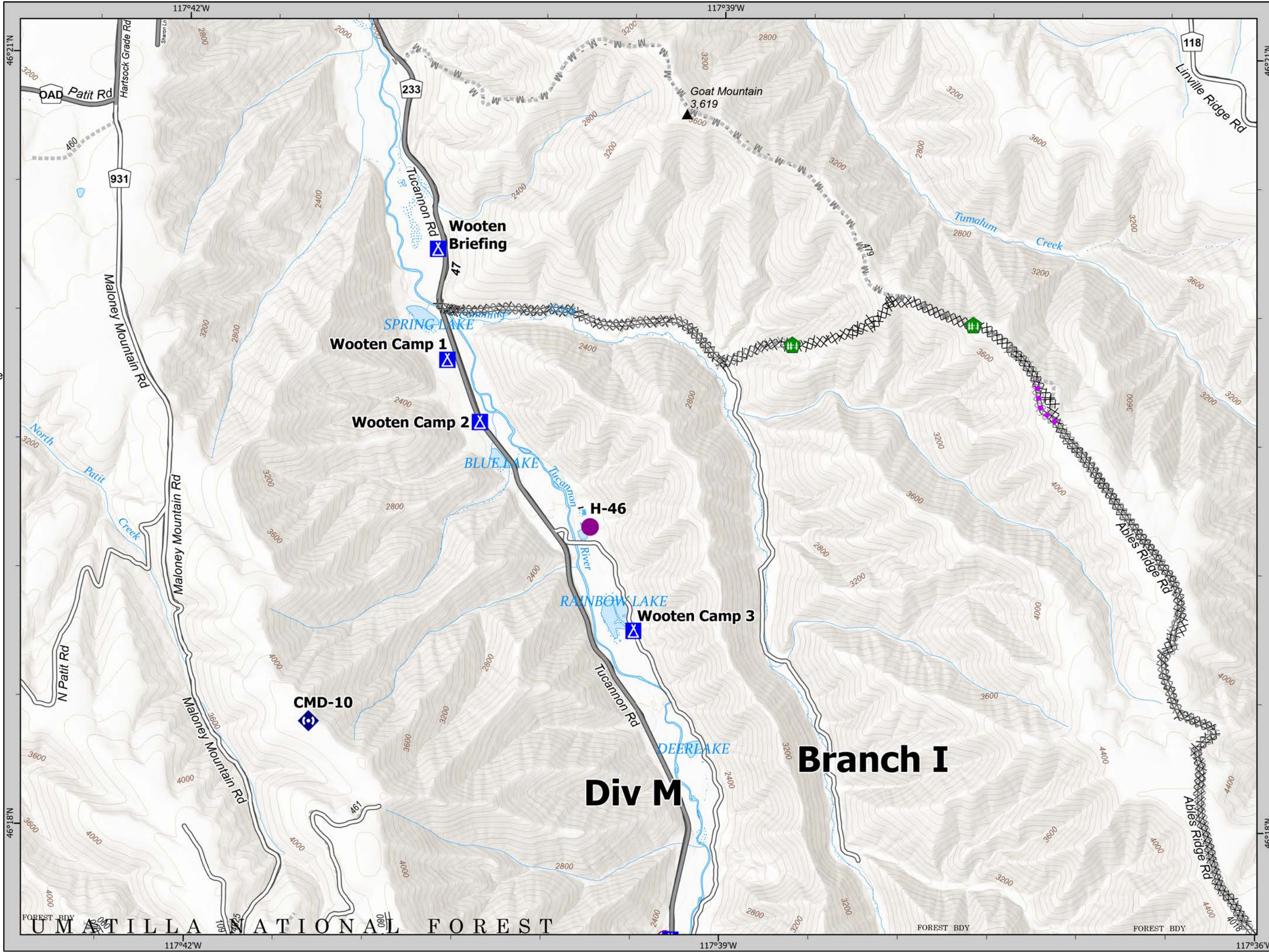
8/15/21



- Mobile Retardant Base
- Helispot
- Camp
- Fence - Cut/Damaged
- Repeater
- Completed Dozer Line
- Planned Dozer Line
- Planned Mixed Construction Line
- Route



1:25,000 NAD83 UTM 11N  
 0 1,000 2,000 4,000 Feet



**IAP**  
Green Ridge  
OR-UMF-000659

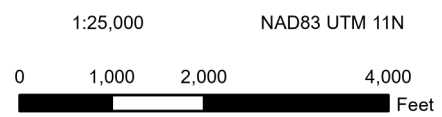
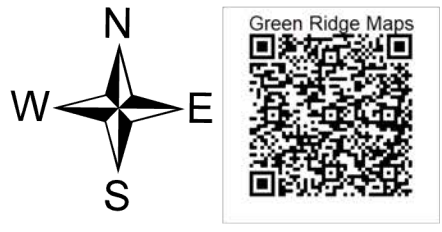
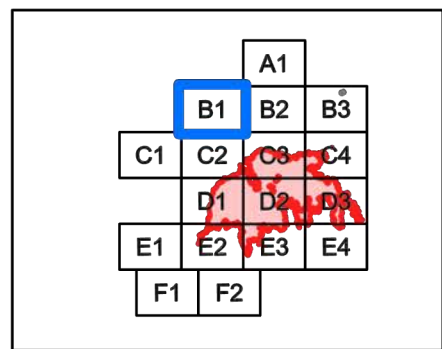
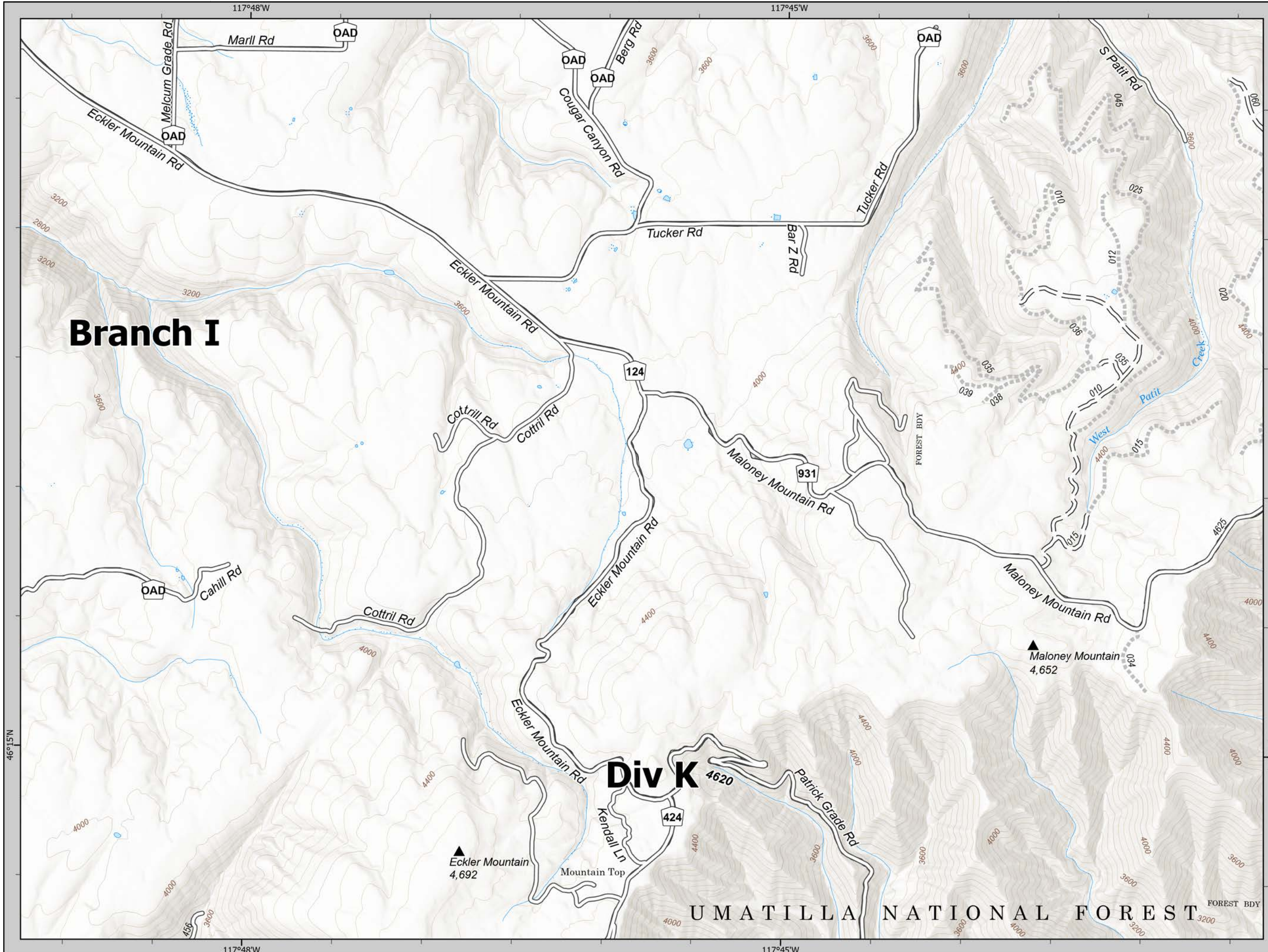
8/15/21



# Branch I

# Div K

UMATILLA NATIONAL FOREST



**IAP**  
**Green Ridge**  
 OR-UMF-000659

8/15/21

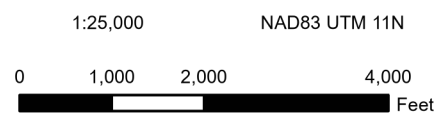
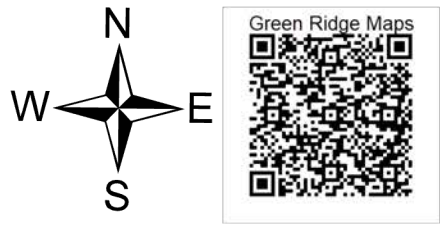
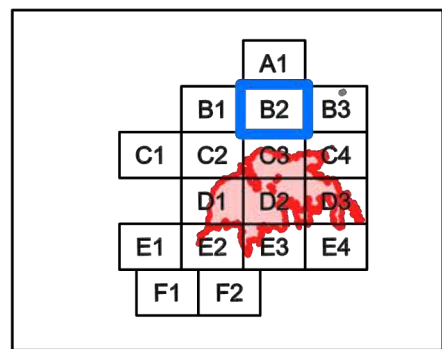
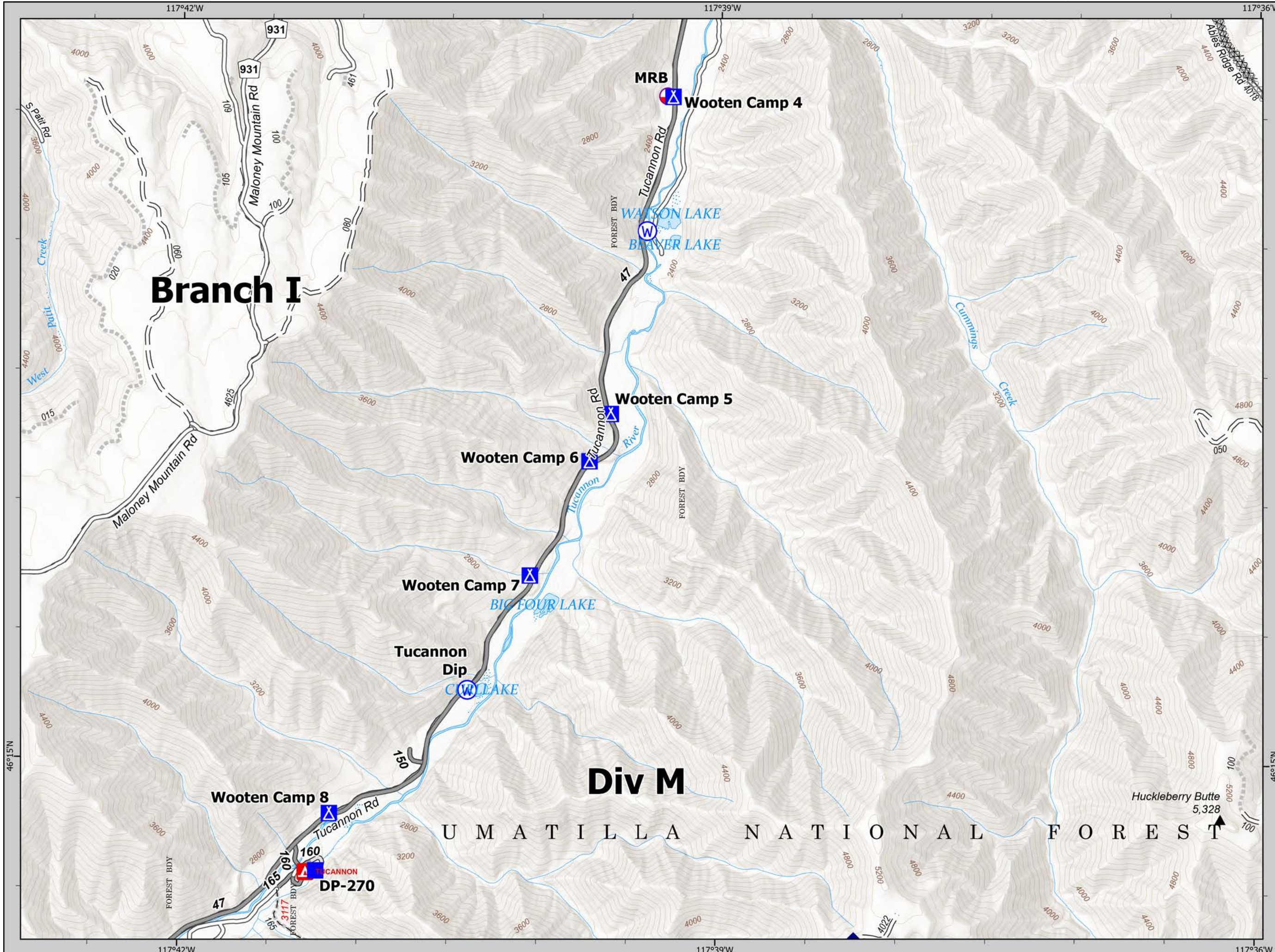


- Mobile Retardant Base
- Helispot
- Drop Point
- Camp
- Internet Access
- Water Source
- Completed Dozer Line
- Planned Dozer Line

**Branch I**

**Div M**

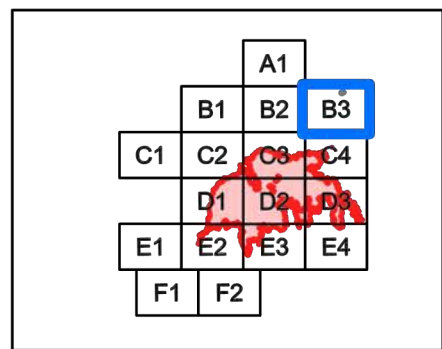
UMATILLA NATIONAL FOREST



8/15/21

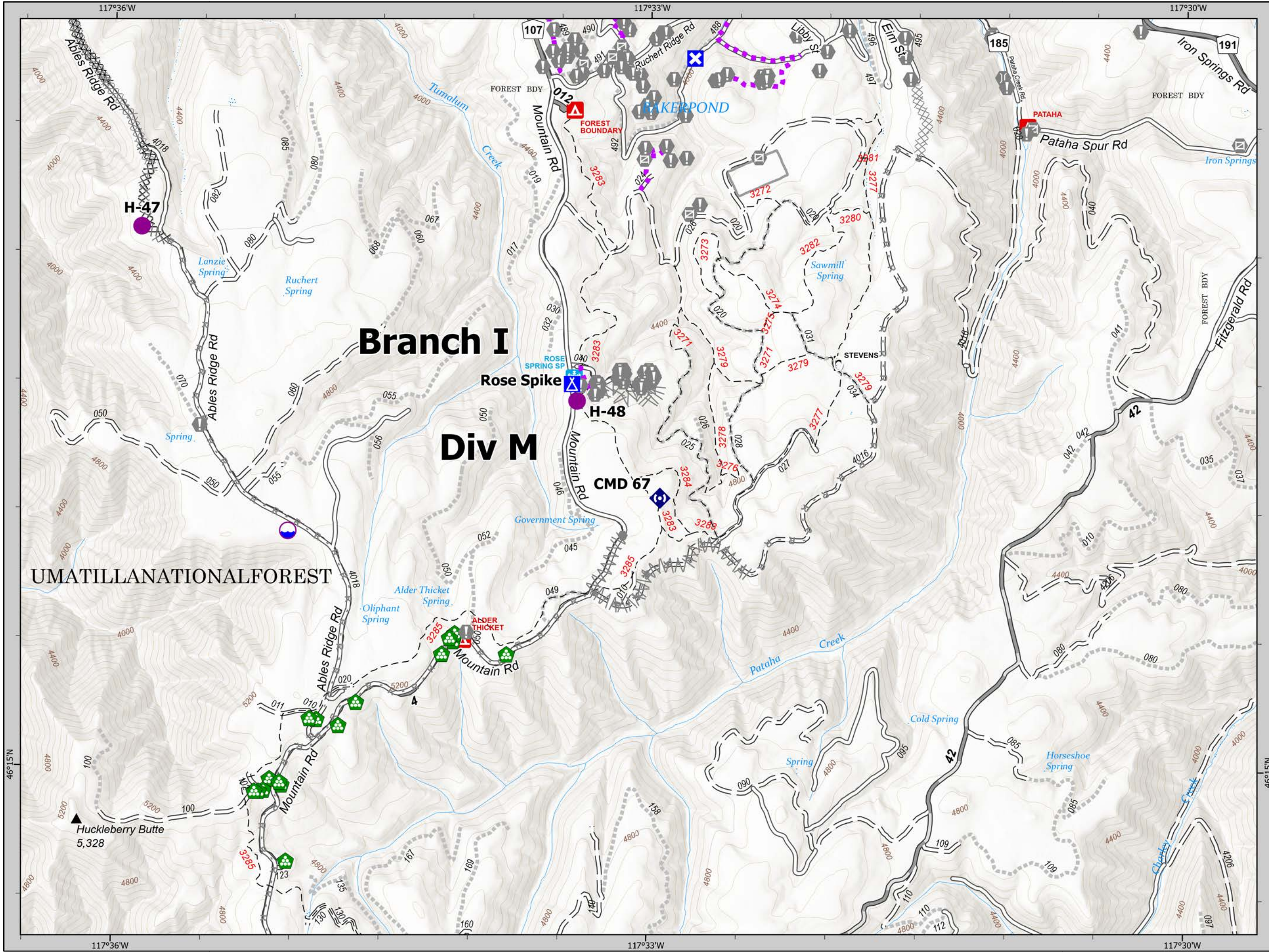


- Dip Site
- Helispot
- Closure
- Camp
- Value at Risk
- Other
- Gate
- Bridge
- Landing or Log Deck
- Repeater
- Completed Dozer Line
- Planned Dozer Line
- Planned Fuel Break
- Planned Road as Line
- Route
- Other



Green Ridge Maps

1:25,000 NAD83 UTM 11N

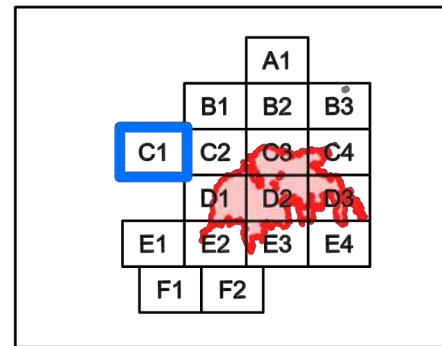


IAP  
Green Ridge  
OR-UMF-000659

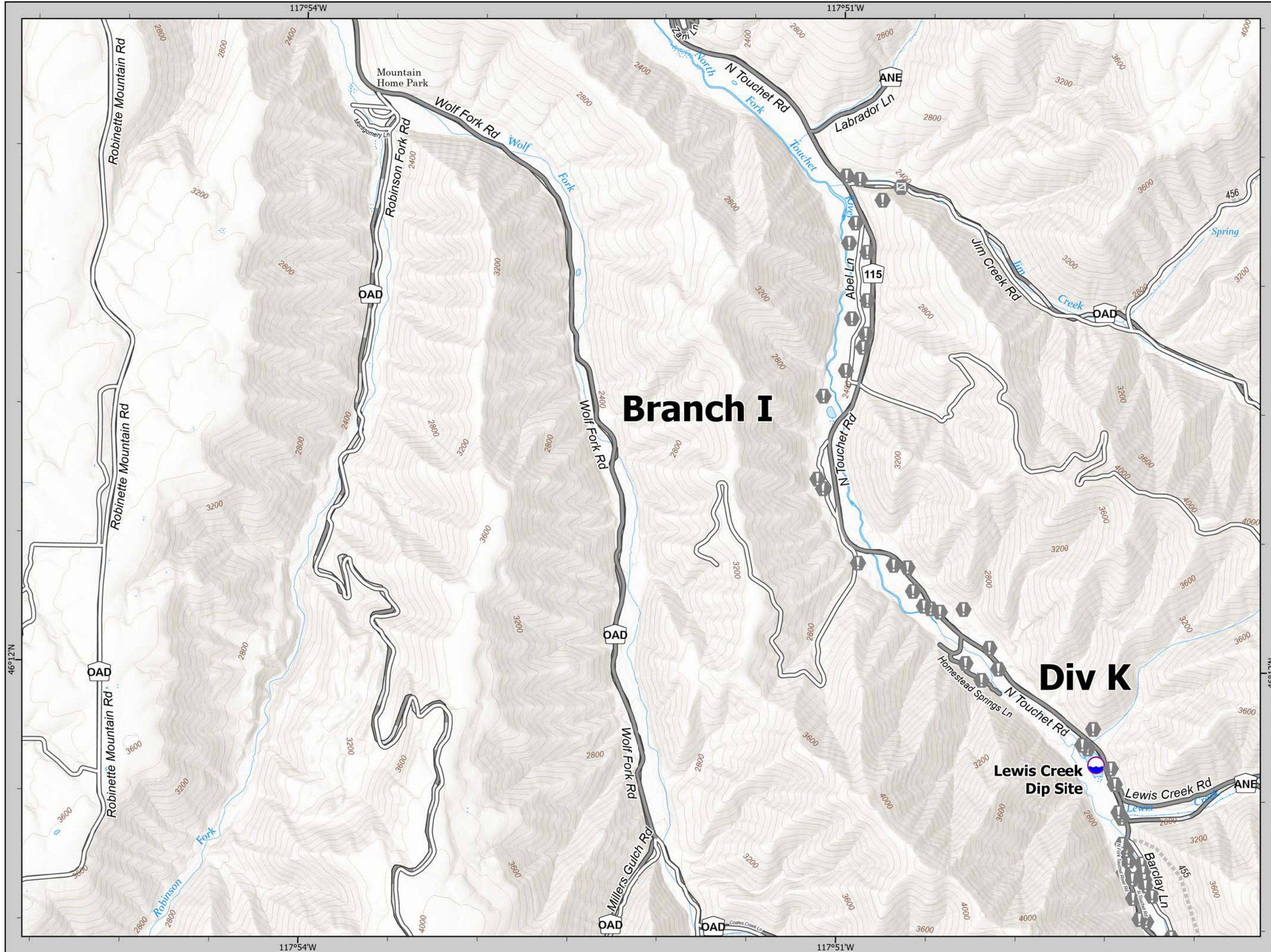
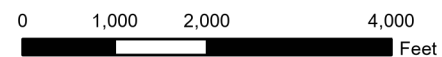
8/15/21



- Dip Site
- Value at Risk
- Gate
- Bridge



1:25,000 NAD83 UTM 11N

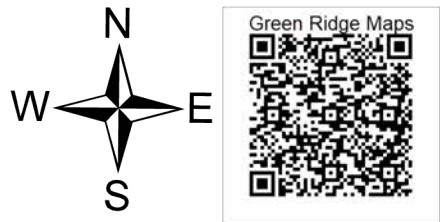
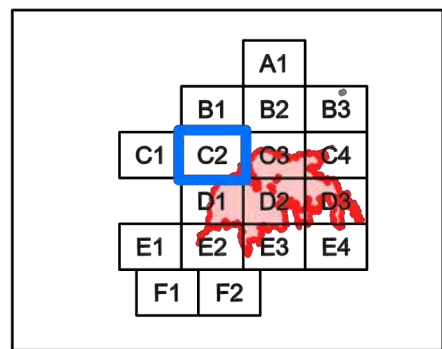


**IAP**  
**Green Ridge**  
 OR-UMF-000659

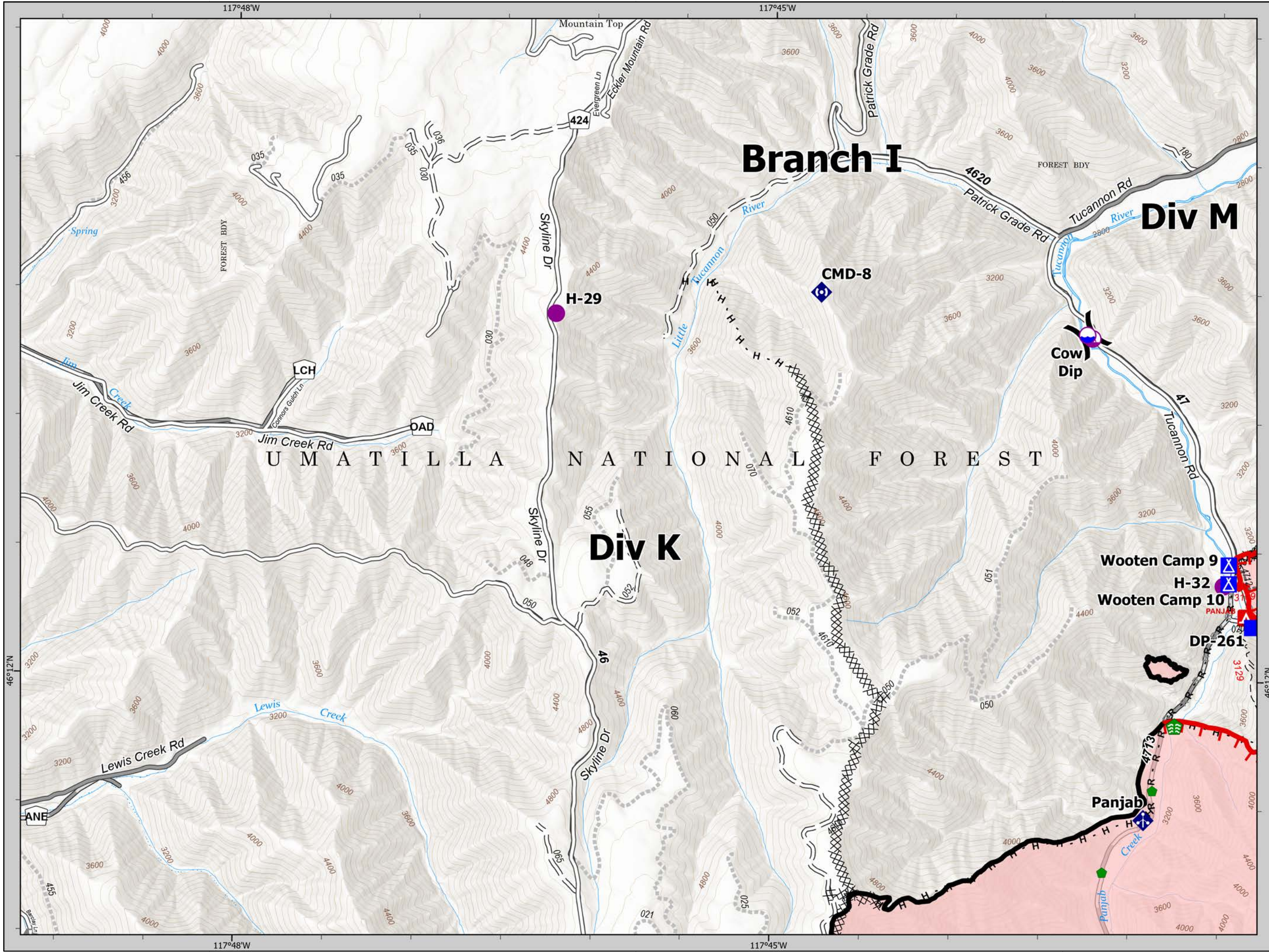
8/15/21



- Dip Site
- Helispot
- Sling Site
- Division Break
- Drop Point
- Camp
- Value at Risk
- Other
- Stream Crossing
- Repair Point
- Mobile Weather Unit
- Repeater
- Completed Dozer Line
- Completed Hand Line
- Completed Road as Line
- Planned Road as Line
- Other
- Fire Edge
- Contained Line
- Wildfire Daily Fire Perimeter



1:25,000  
 NAD83 UTM 11N  
 0 1,000 2,000 4,000 Feet

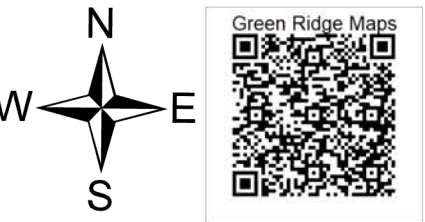
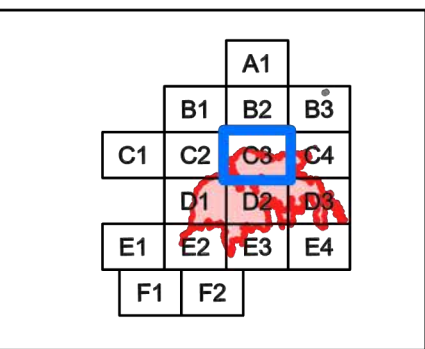


**IAP**  
**Green Ridge**  
 OR-UMF-000659

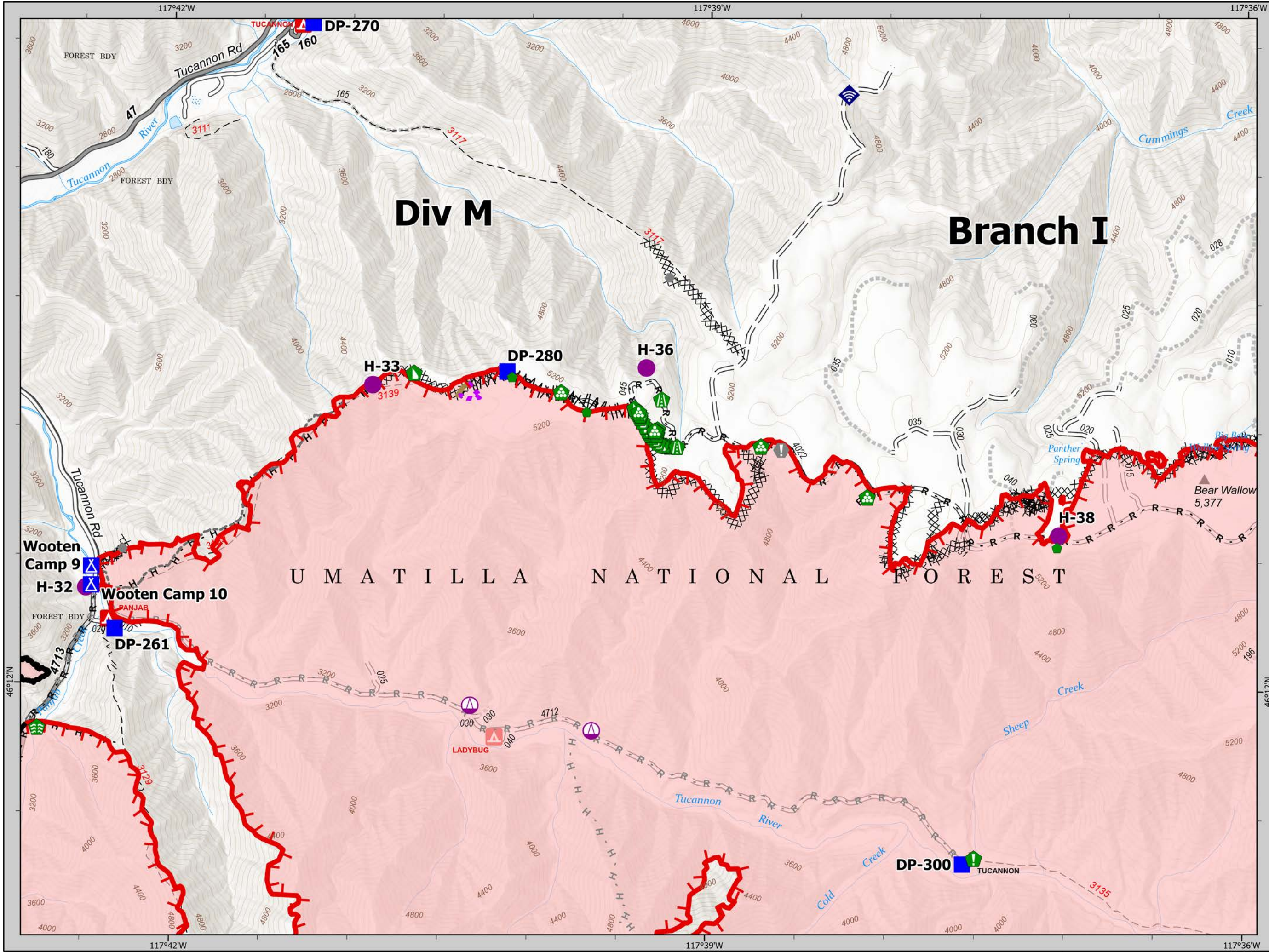
8/15/21



- Helispot
- Sling Site
- Drop Point
- ▲ Camp
- Value at Risk
- Other
- Stream Crossing
- Road Repair
- Resource Location
- Repair Point
- Landing or Log Deck
- Dozer Push
- Mobile Weather Unit
- Internet Access
- XX Completed Dozer Line
- M Completed Fuel Break
- H Completed Hand Line
- R Completed Road as Line
- H Planned Hand Line
- R Planned Road as Line
- Other
- Repair Line
- Route
- Fire Edge
- Contained Line
- Wildfire Daily Fire Perimeter



1:25,000  
 0 1,000 2,000 4,000 Feet  
 NAD83 UTM 11N



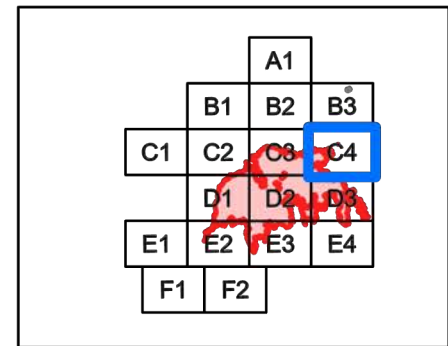


**IAP**  
**Green Ridge**  
 OR-UMF-000659

8/15/21

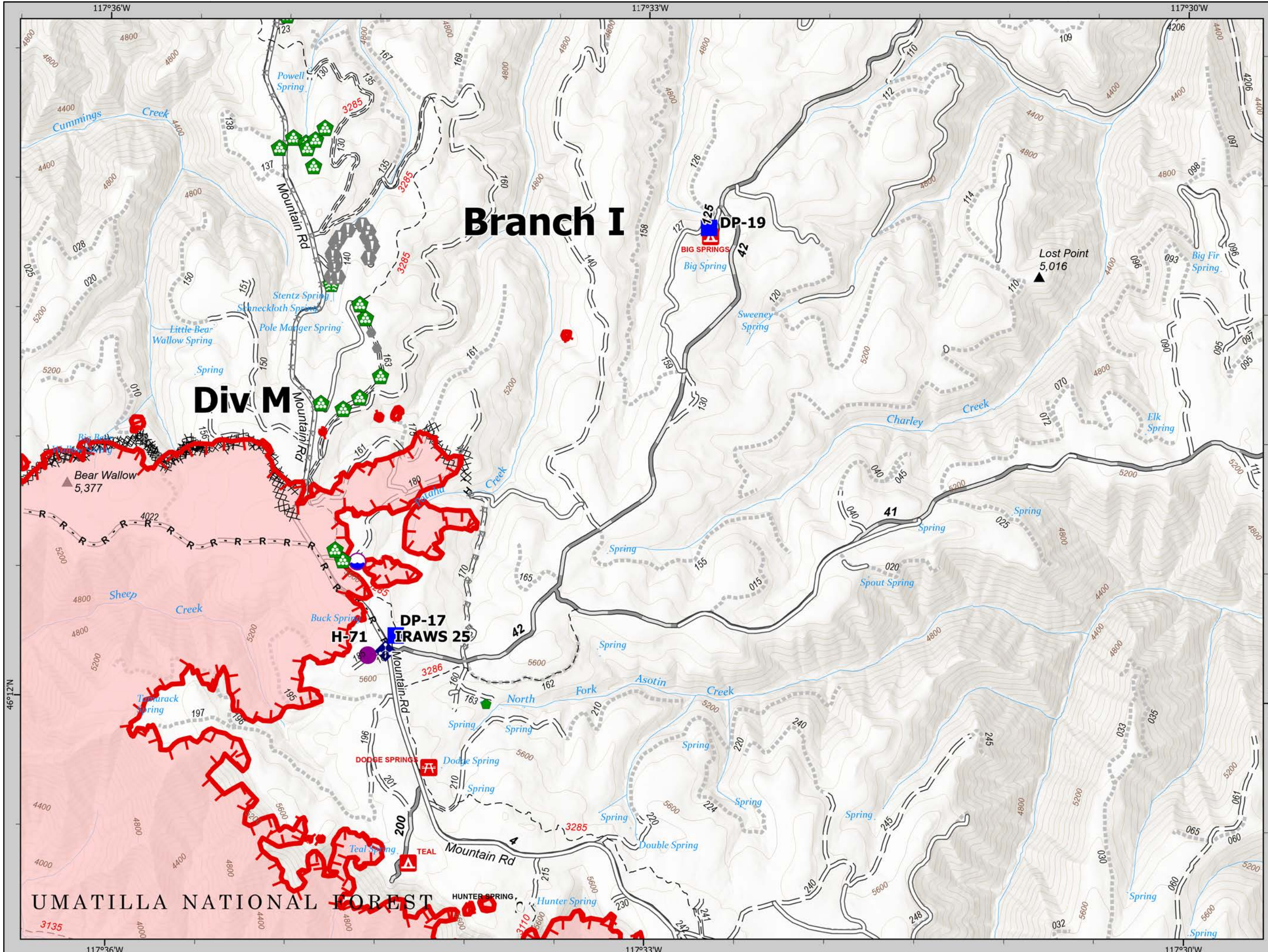


- Dip Site
- Helispot
- Drop Point
- Value at Risk
- Other
- Stream Crossing
- Repair Point
- Landing or Log Deck
- Mobile Weather Unit
- XX XX Completed Dozer Line
- H - Completed Hand Line
- R - Completed Road as Line
- R - Planned Road as Line
- Fire Edge
- Wildfire Daily Fire Perimeter



Green Ridge Maps

1:25,000 NAD83 UTM 11N

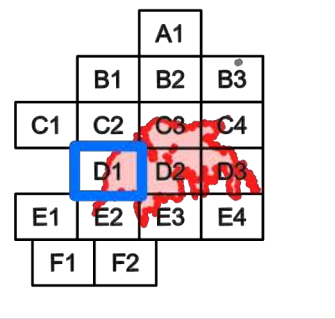


**IAP**  
**Green Ridge**  
 OR-UMF-000659

8/15/21

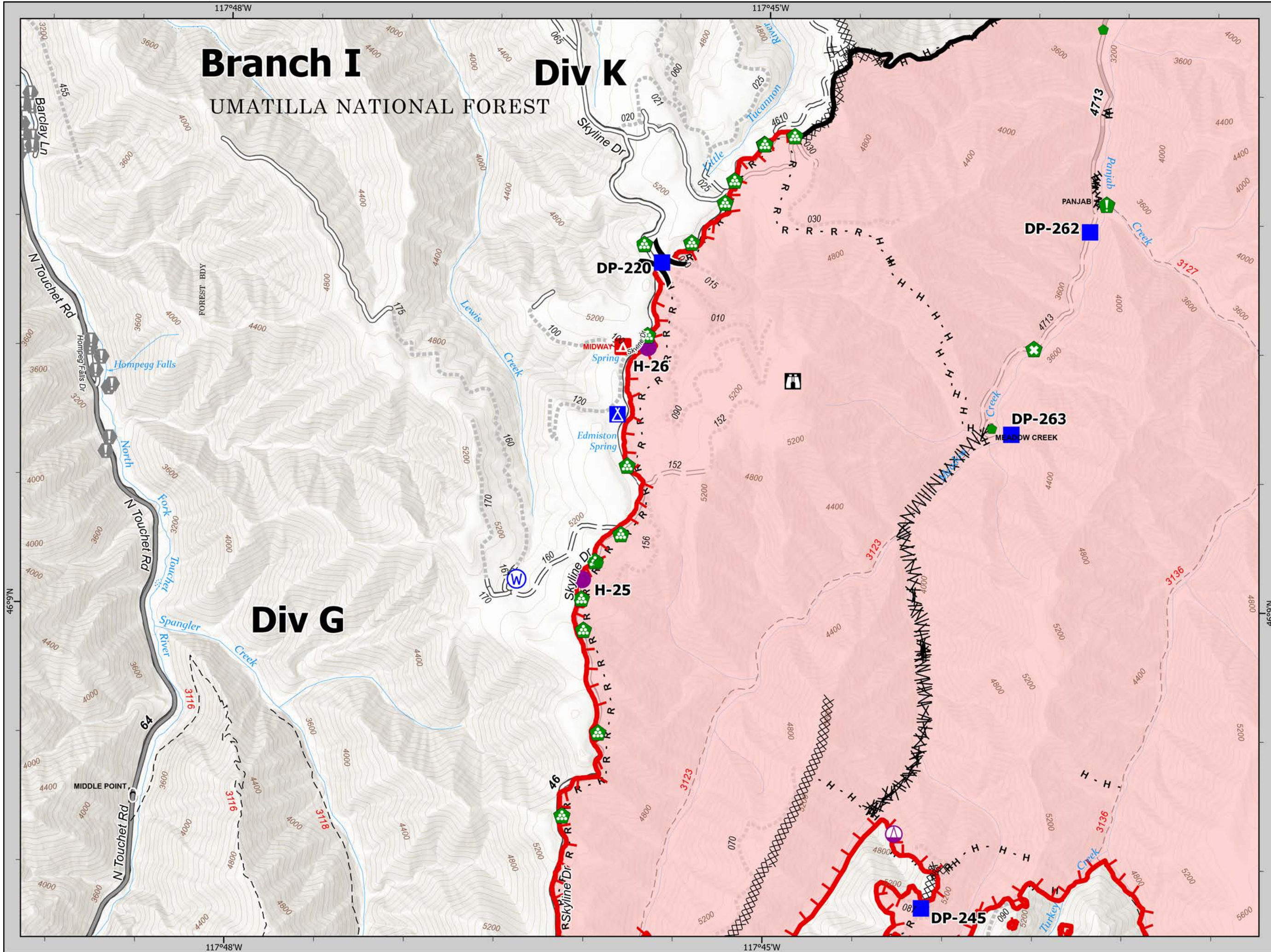


- Helispot
- Sling Site
- Division Break
- Drop Point
- Camp
- Lookout
- Value at Risk
- Retardant in Avoidance Area
- Resource Location
- Repair Point
- Landing or Log Deck
- Water Source
- Completed Dozer Line
- Completed Fuel Break
- Completed Hand Line
- Completed Road as Line
- Fire Edge
- Contained Line
- Wildfire Daily Fire Perimeter



Green Ridge Maps

1:25,000 NAD83 UTM 11N

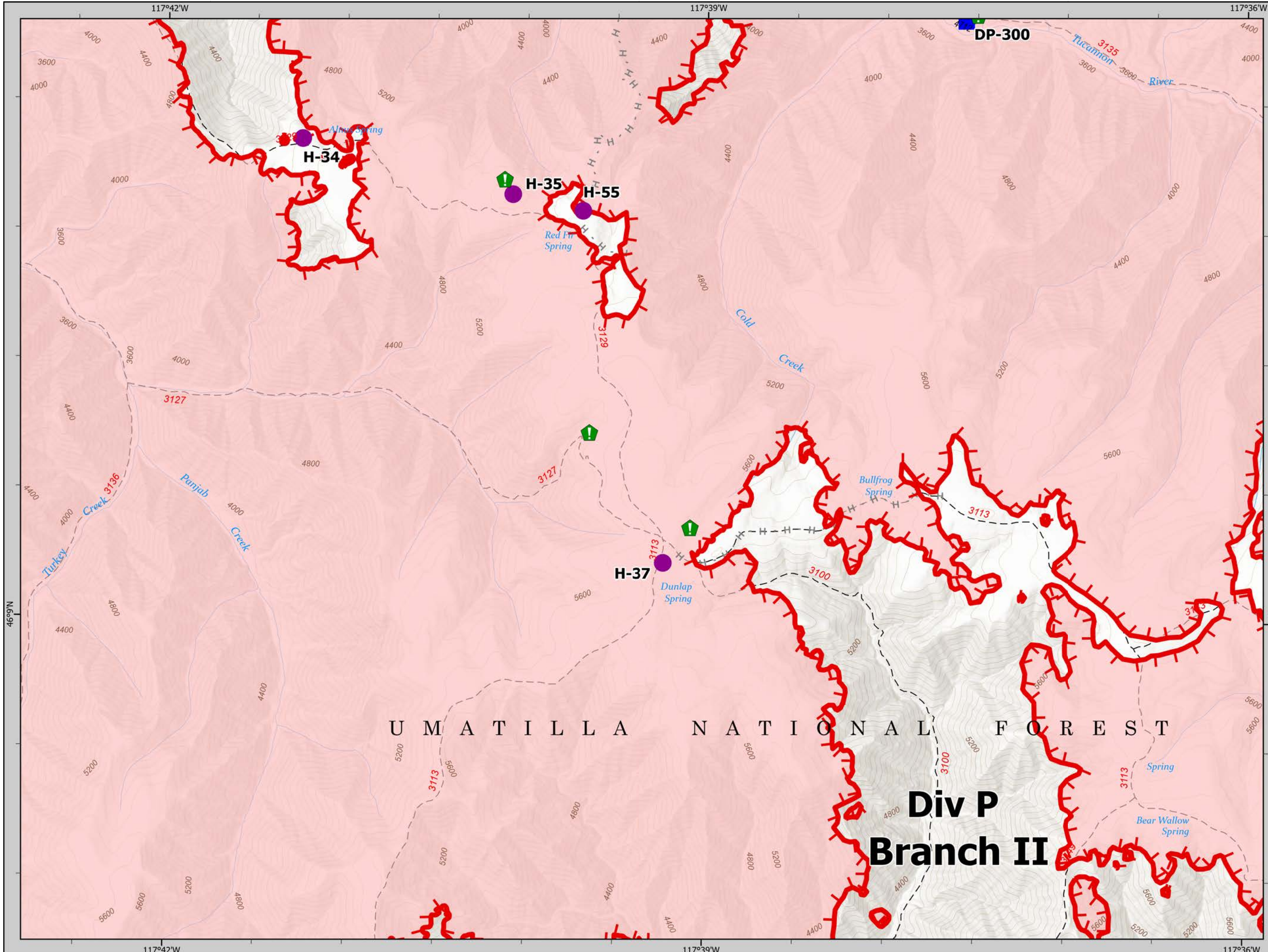


**IAP**  
**Green Ridge**  
 OR-UMF-000659

8/15/21

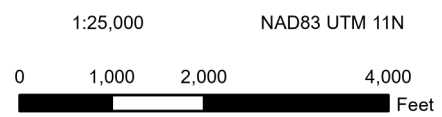
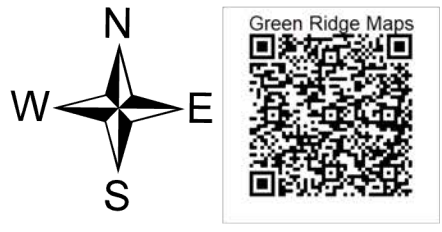
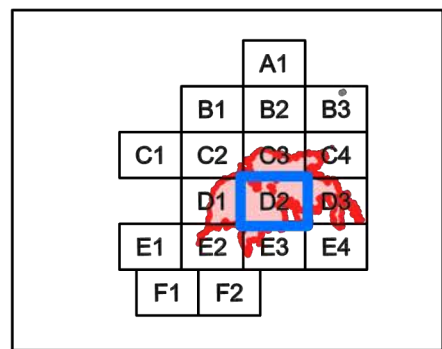


- Helispot
- Drop Point
- !▲ Resource Location
- H - Planned Hand Line
- R - Planned Road as Line
- Fire Edge
- Wildfire Daily Fire Perimeter



**Div P**  
**Branch II**

U M A T I L L A N A T I O N A L F O R E S T

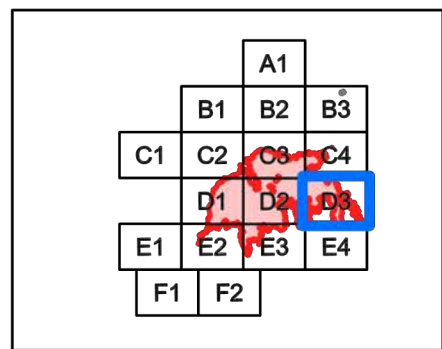
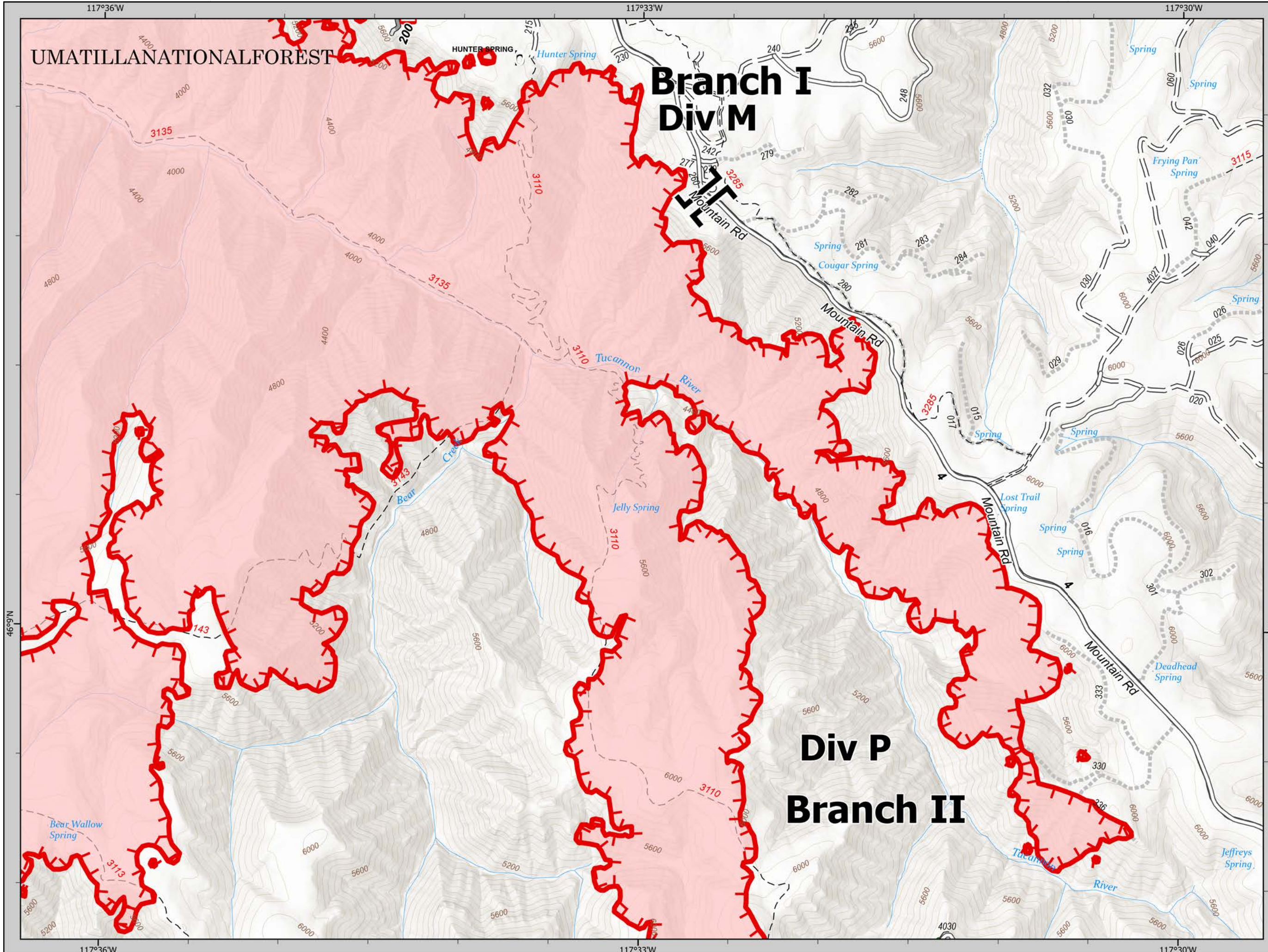


IAP  
Green Ridge  
OR-UMF-000659

8/15/21



- Branch Break
- Resource Location
- Fire Edge
- Wildfire Daily Fire Perimeter



Green Ridge Maps

NAD83 UTM 11N

1:25,000

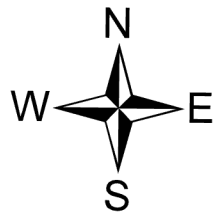
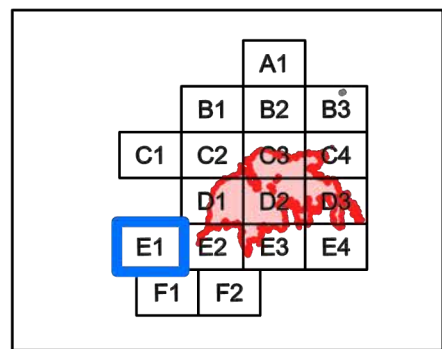
0 1,000 2,000 4,000 Feet

**IAP**  
**Green Ridge**  
 OR-UMF-000659

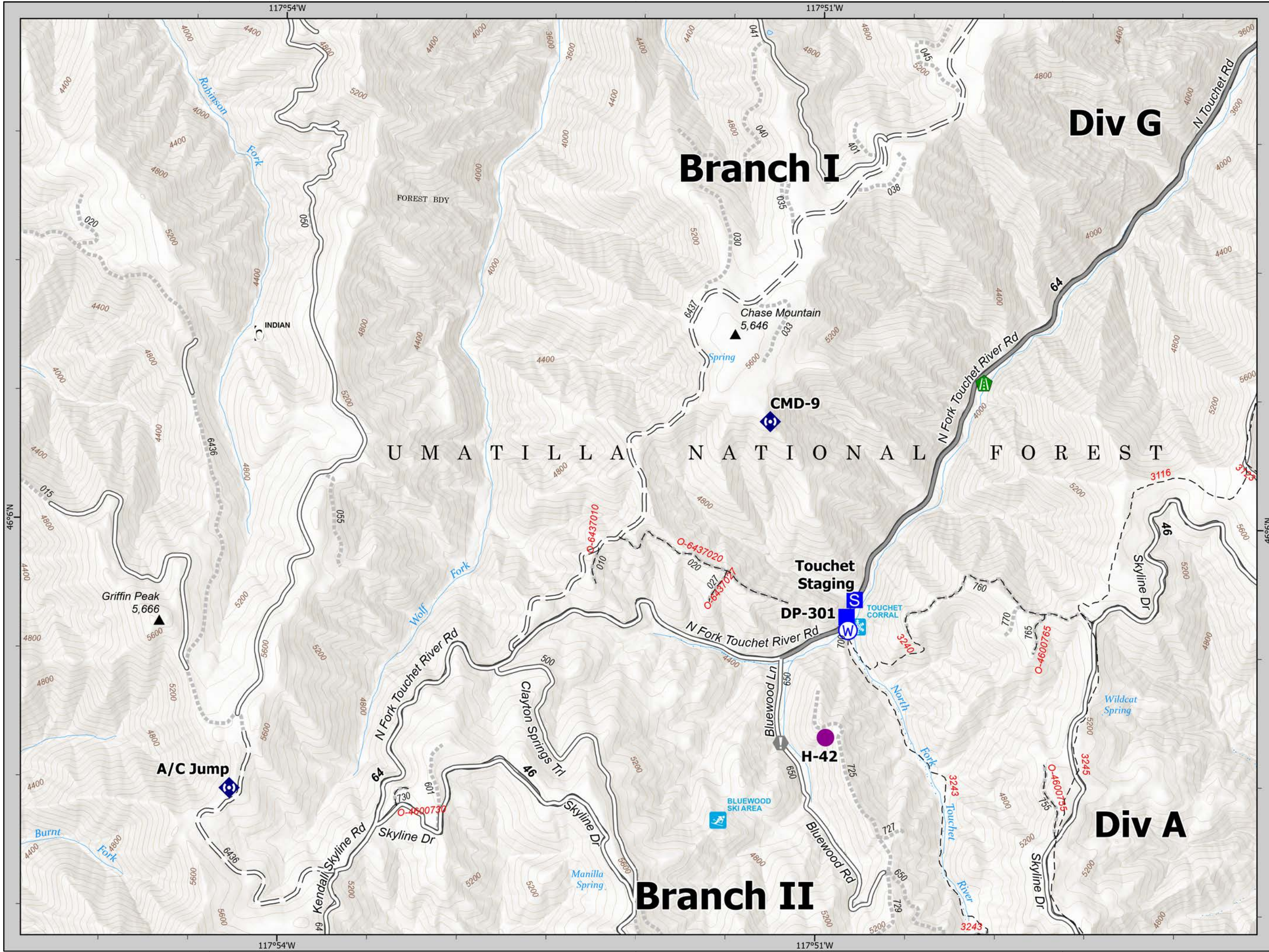
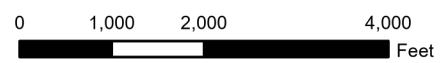
8/15/21



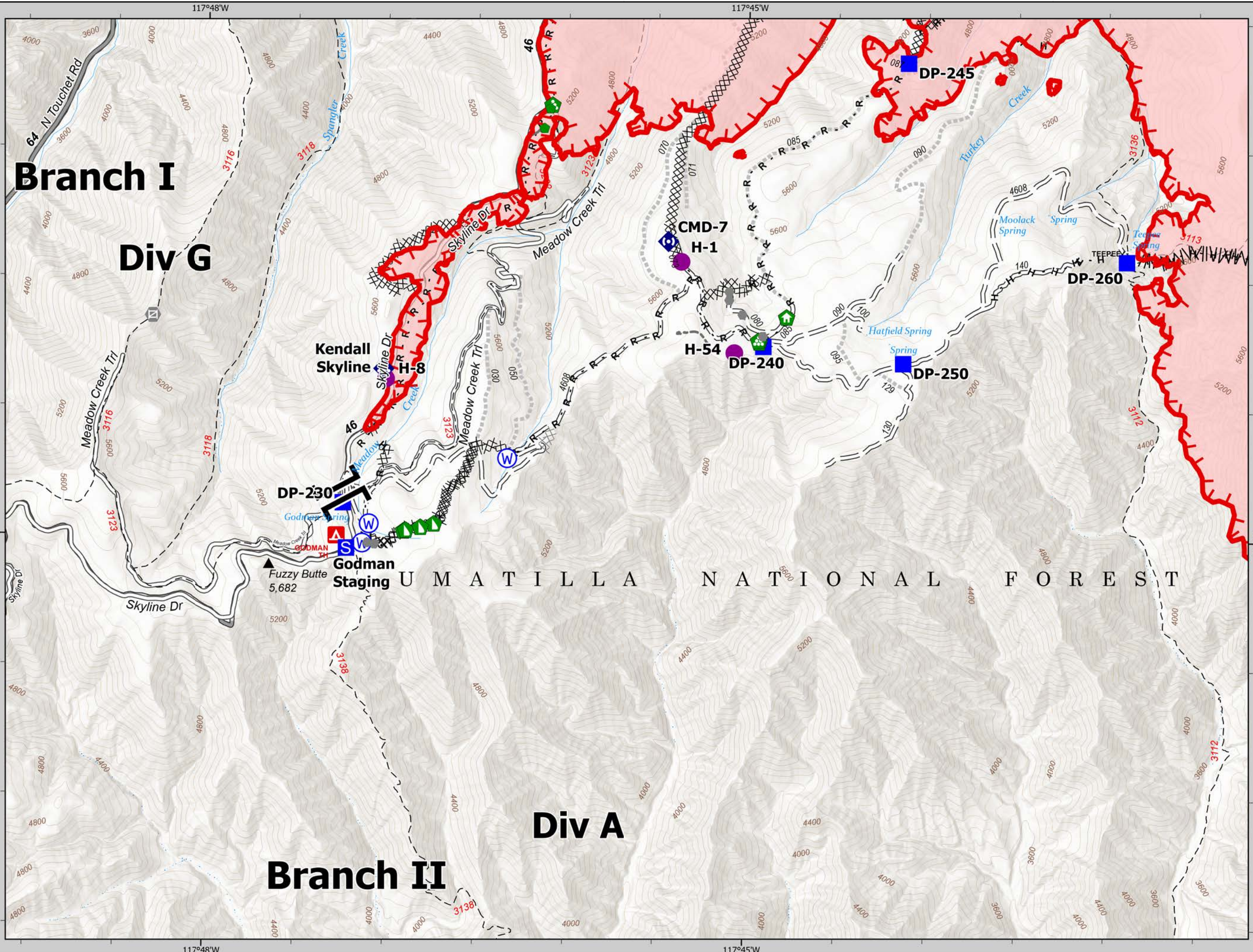
- Helispot
- Drop Point
- S Staging Area
- ⚠ Value at Risk
- ▲ Road Repair
- Ⓜ Repeater
- Ⓜ Water Source



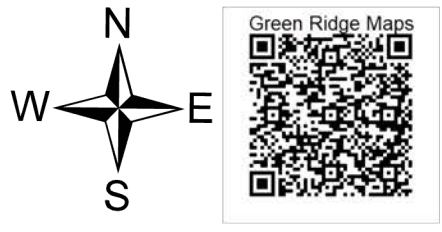
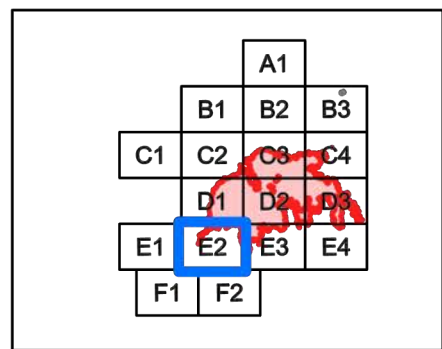
1:25,000 NAD83 UTM 11N



8/15/21



- Helispot
- Sling Site
- Branch Break
- Drop Point
- Staging Area
- Other
- Gate
- Structure Wrap
- Repair Point
- Landing or Log Deck
- Dozer Push
- Mobile Weather Unit
- Repeater
- Water Source
- Completed Dozer Line
- Completed Fuel Break
- Completed Hand Line
- Completed Mixed Construction Line
- Completed Road as Line
- Planned Dozer Line
- Highlighted Feature
- Other
- Fire Edge
- Wildfire Daily Fire Perimeter



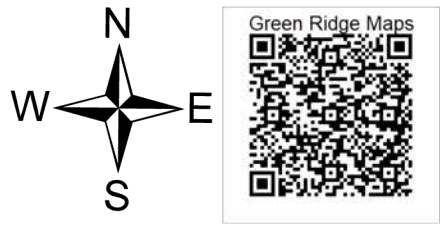
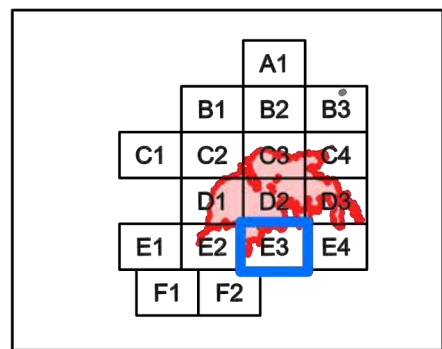
1:25,000  
 NAD83 UTM 11N  
 0 1,000 2,000 4,000 Feet

**IAP**  
**Green Ridge**  
 OR-UMF-000659

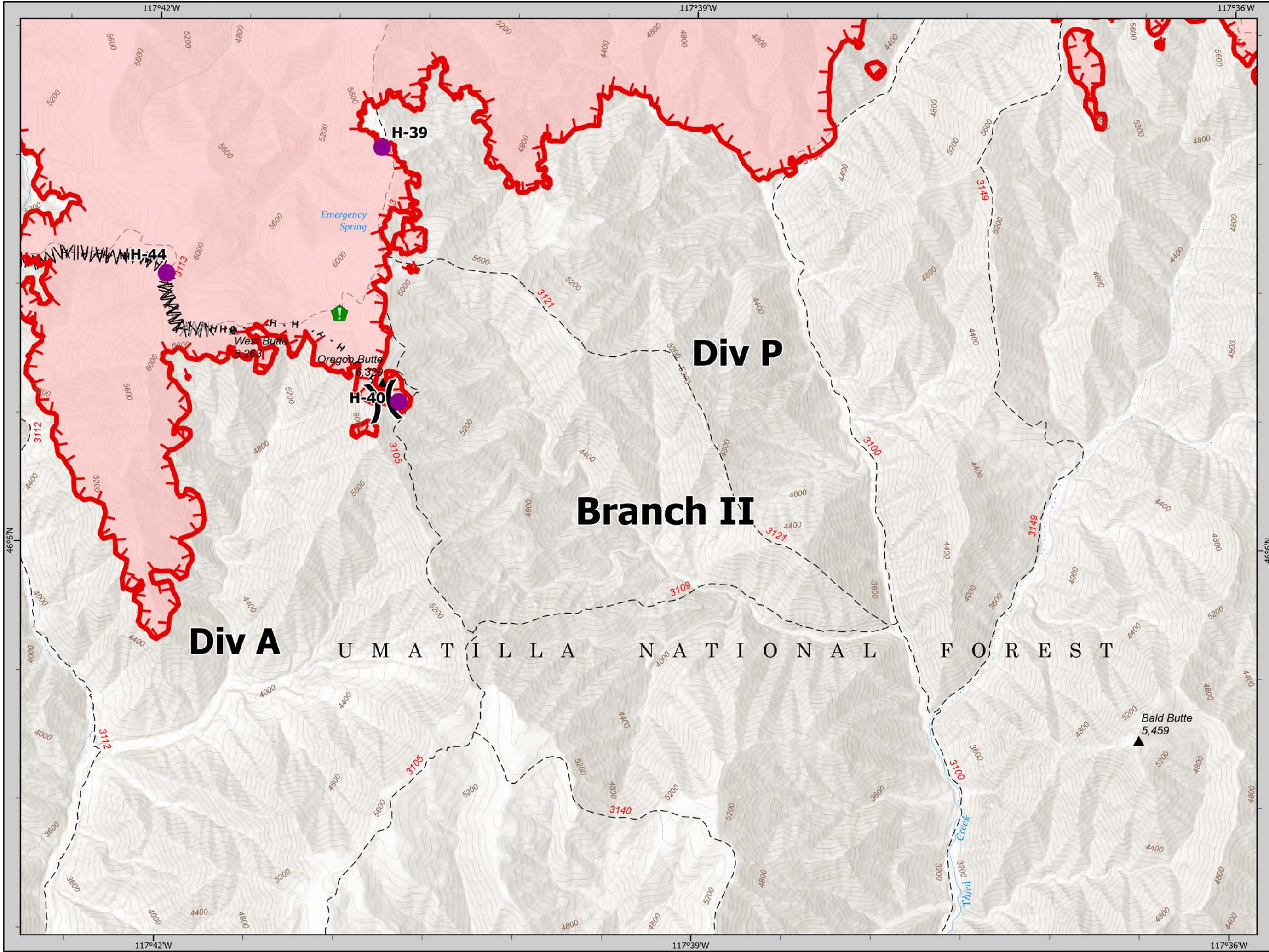
8/15/21



- Helispot
- X Division Break
- Drop Point
- Resource Location
- Completed Fuel Break
- Completed Hand Line
- Planned Fuel Break
- Fire Edge
- Wildfire Daily Fire Perimeter



1:25,000  
 NAD83 UTM 11N  
 0 1,000 2,000 4,000 Feet

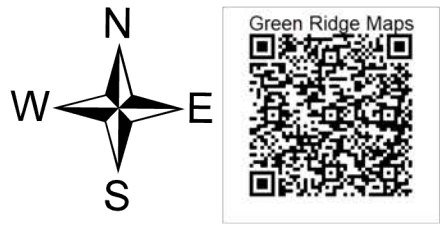
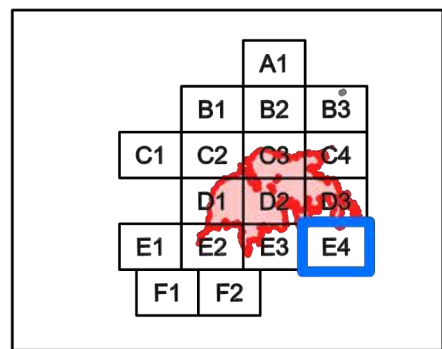
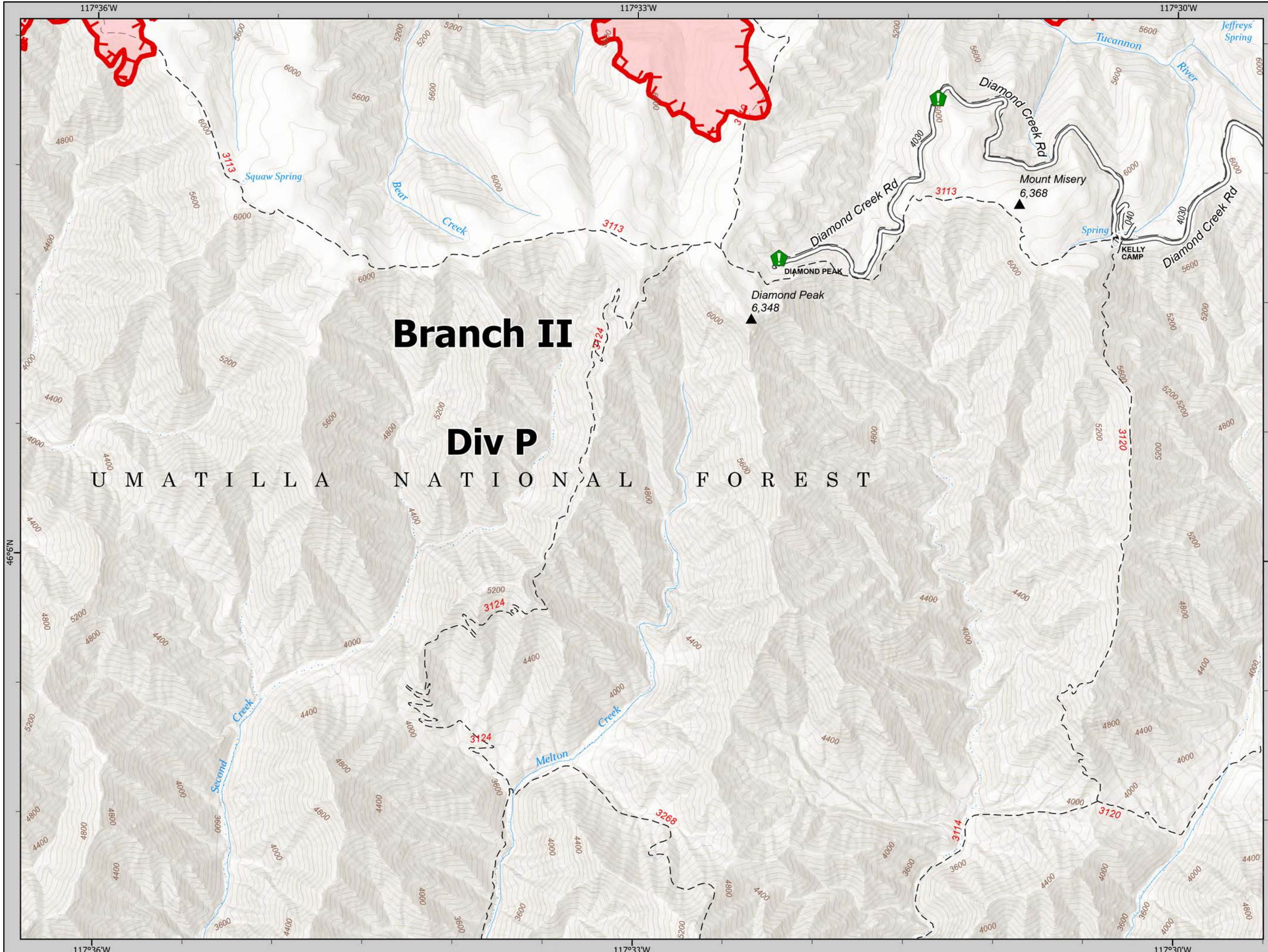


IAP  
Green Ridge  
OR-UMF-000659

8/15/21



- Resource Location
- Fire Edge
- Wildfire Daily Fire Perimeter



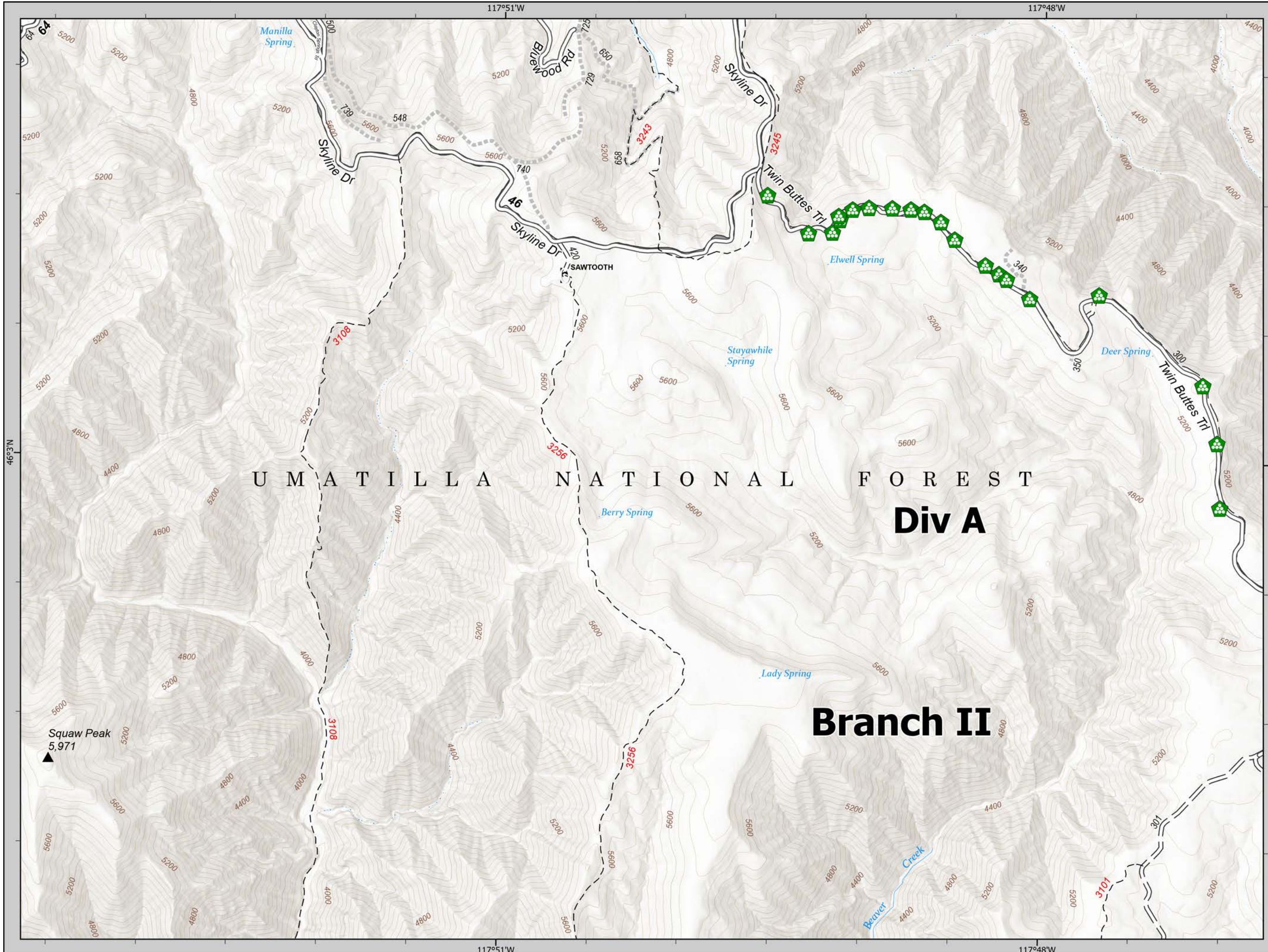
1:25,000  
NAD83 UTM 11N  
0 1,000 2,000 4,000 Feet



8/15/21

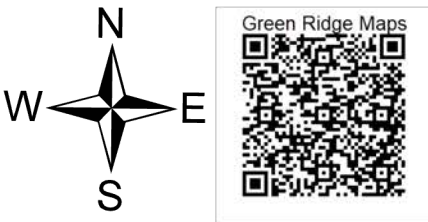
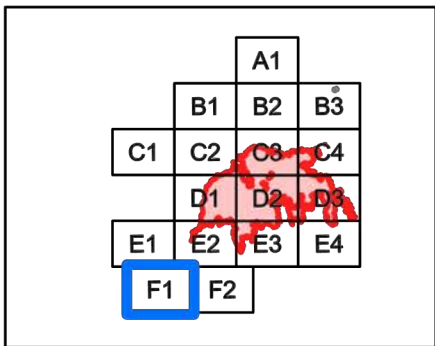


Landing or Log Deck



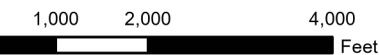
U M A T I L L A N A T I O N A L F O R E S T  
**Div A**

**Branch II**



1:25,000

NAD83 UTM 11N

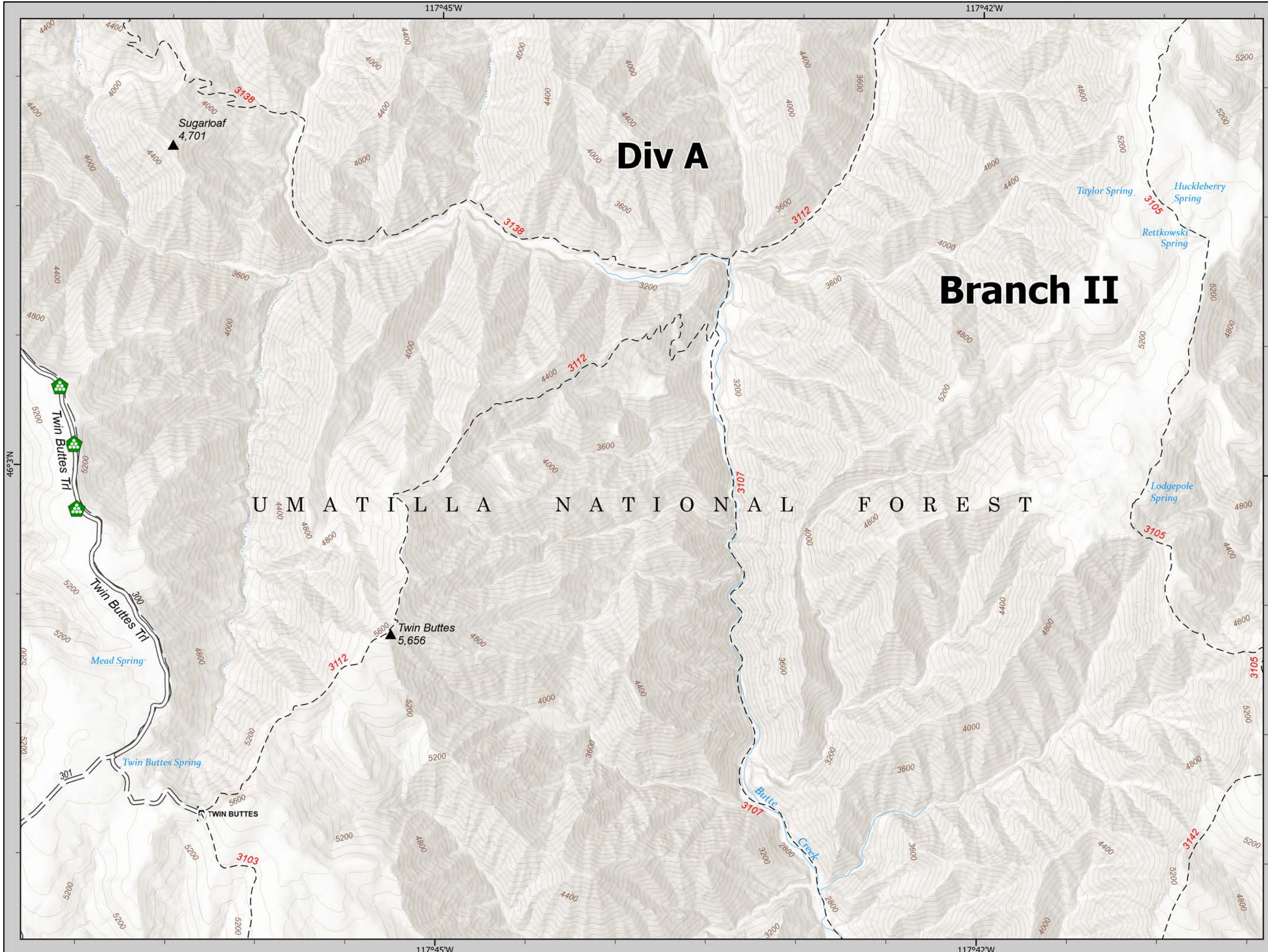


**IAP**  
**Green Ridge**  
OR-UMF-000659

8/15/21



Landing or Log Deck



U M A T I L L A N A T I O N A L F O R E S T

**Div A**

**Branch II**

Twin Buttes  
5,656

Sugarloaf  
4,701

Twin Buttes Trl

Mead Spring

Twin Buttes Spring

TWIN BUTTES

Butte Creek

Taylor Spring

Huckleberry Spring

Rettkowski Spring

Lodgepole Spring

