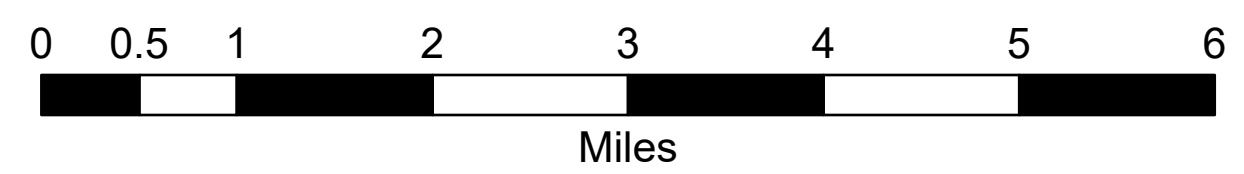


Suppression Repair

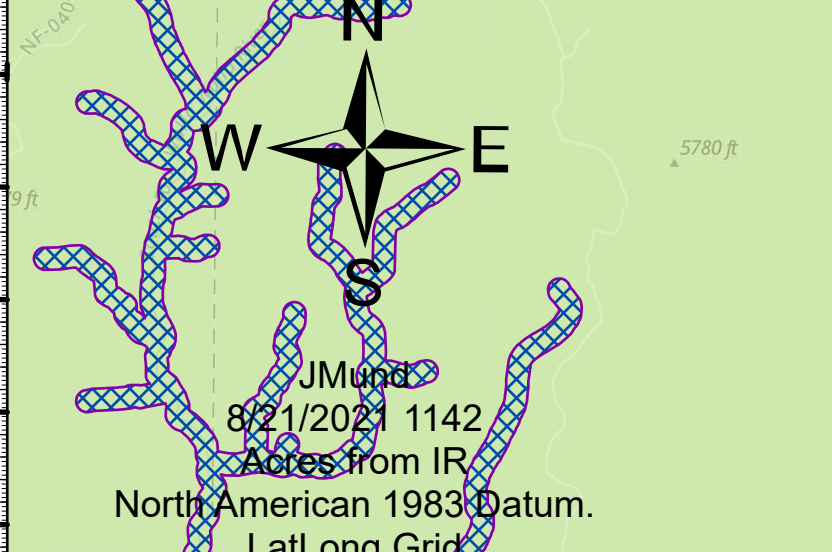
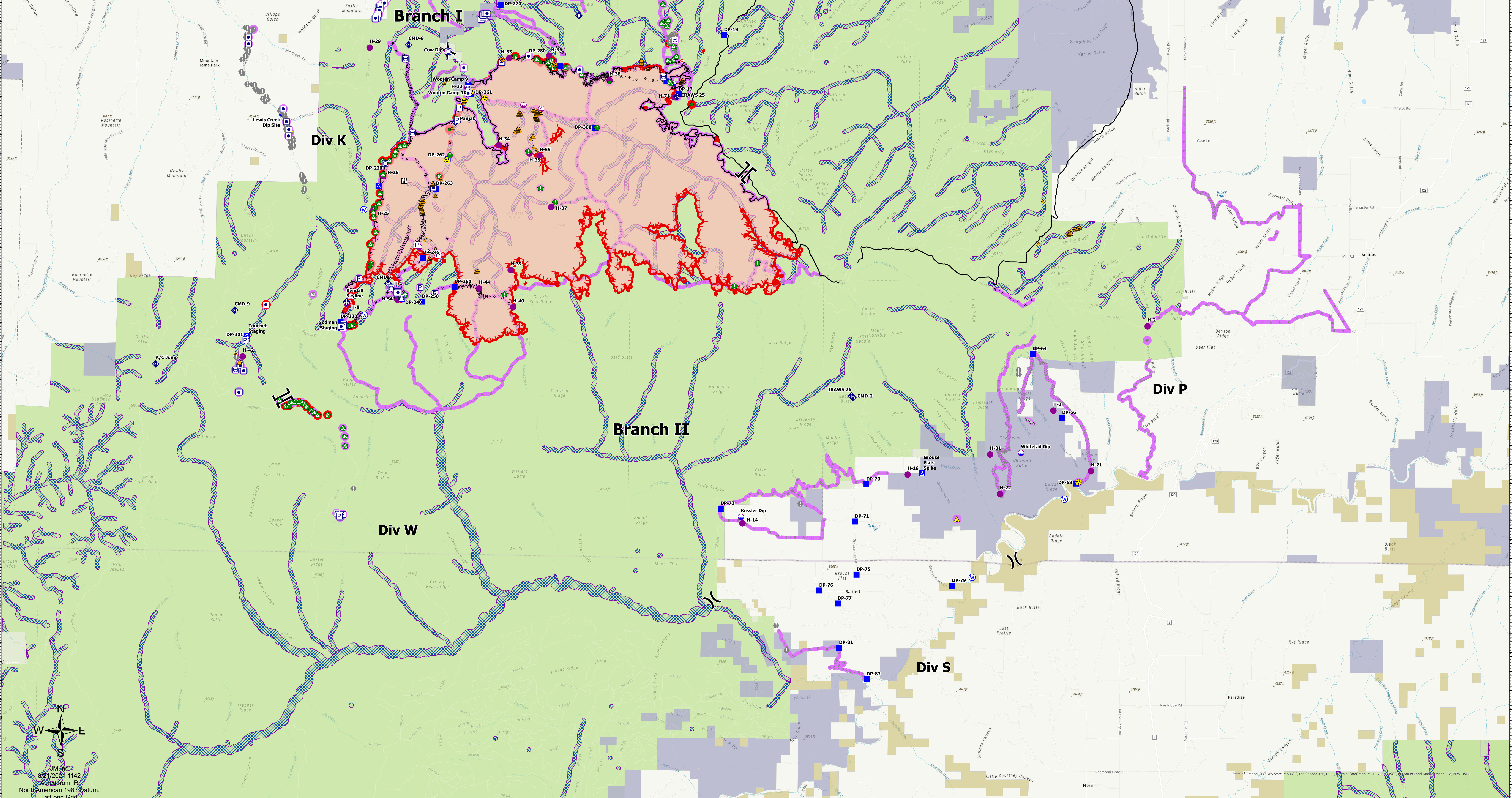
Green Ridge
OR-UMF-000659
8/22/2021



39,235 acres at 8/19/2021@2017



Air Operations ● Dip Site ● Mobile Retardant Base ● Helispot ● Slings Site Assignment Breaks X Division Break II Branch Break Logistics ■ Incident Command Post ■ Drop Point ■ Closure ■ Camp ■ Staging Area Operations ■ Lookout	Fire ● Hot Spot - Spot Fire ● Value at Risk ● Other ● Gate Repair ● Structure Wrap ● Stream Crossing ● Road Repair ● Retardant in Avoidance Area ● Resource Location ● Repair Point ● Landing or Log Deck ● Fence - Cut/Damaged	Ops Planned ● Planned Dozer Line ● Planned Fuel Break ● Planned Hand Line ● Planned Mixed Construction Line ● Planned Road as Line Reference ● Access or Improved Road ● Highlighted Feature ● Other	Repair Status ● Completed - Inspected ● In Use - Fire Management ● Completed - Ready for Inspection ● In Progress ● No Repair Needed ● Other - See Comments ● Unknown Ownership ■ U.S. Forest Service ■ Bureau of Land Management ■ State Land ■ Other Land, Including Private ■ Retardant_Drops_Lines_In_AFRAA ■ Retardant_Drops_Points_In_AFRAA
--	--	---	---



117°59.5'W 117°58'W 117°56.5'W 117°55'W 117°53.5'W 117°52'W 117°50.5'W 117°49'W 117°47.5'W 117°46'W 117°44.5'W 117°43'W 117°41.5'W 117°40'W 117°38.5'W 117°37'W 117°35.5'W 117°34'W 117°32.5'W 117°31'W 117°29.5'W 117°28'W 117°26.5'W 117°25'W 117°23.5'W 117°22'W 117°20.5'W 117°19'W 117°17.5'W 117°16'W 117°14.5'W 117°13'W 117°11.5'W 117°10'W 117°9'W 117°8'W 117°7'W 117°6'W 117°5'W 117°4'W 117°3'W

118°W 117°59'W 117°57.5'W 117°56'W 117°54.5'W 117°53'W 117°51.5'W 117°50'W 117°48.5'W 117°47'W 117°45.5'W 117°44'W 117°42.5'W 117°41'W 117°39.5'W 117°38'W 117°36.5'W 117°35'W 117°33.5'W 117°32'W 117°30.5'W 117°29'W 117°27.5'W 117°26'W 117°24.5'W 117°23'W 117°21.5'W 117°20'W 117°18.5'W 117°17'W 117°15.5'W 117°14'W 117°12.5'W 117°11'W 117°9.5'W 117°8'W 117°7'W 117°6'W 117°5'W 117°4'W 117°3'W

46°22.5'N 46°21.5'N 46°20.5'N 46°19.5'N 46°18.5'N 46°17.5'N 46°16.5'N 46°15.5'N 46°14.5'N 46°13.5'N 46°12.5'N 46°11.5'N 46°10.5'N 46°9.5'N 46°8.5'N 46°7.5'N 46°6.5'N 46°5.5'N 46°4.5'N 46°3.5'N 46°2.5'N 46°1.5'N 46°0.5'N 45°59.5'N 45°58.5'N 45°57.5'N 45°56.5'N 45°55.5'N 45°54.5'N 45°53.5'N