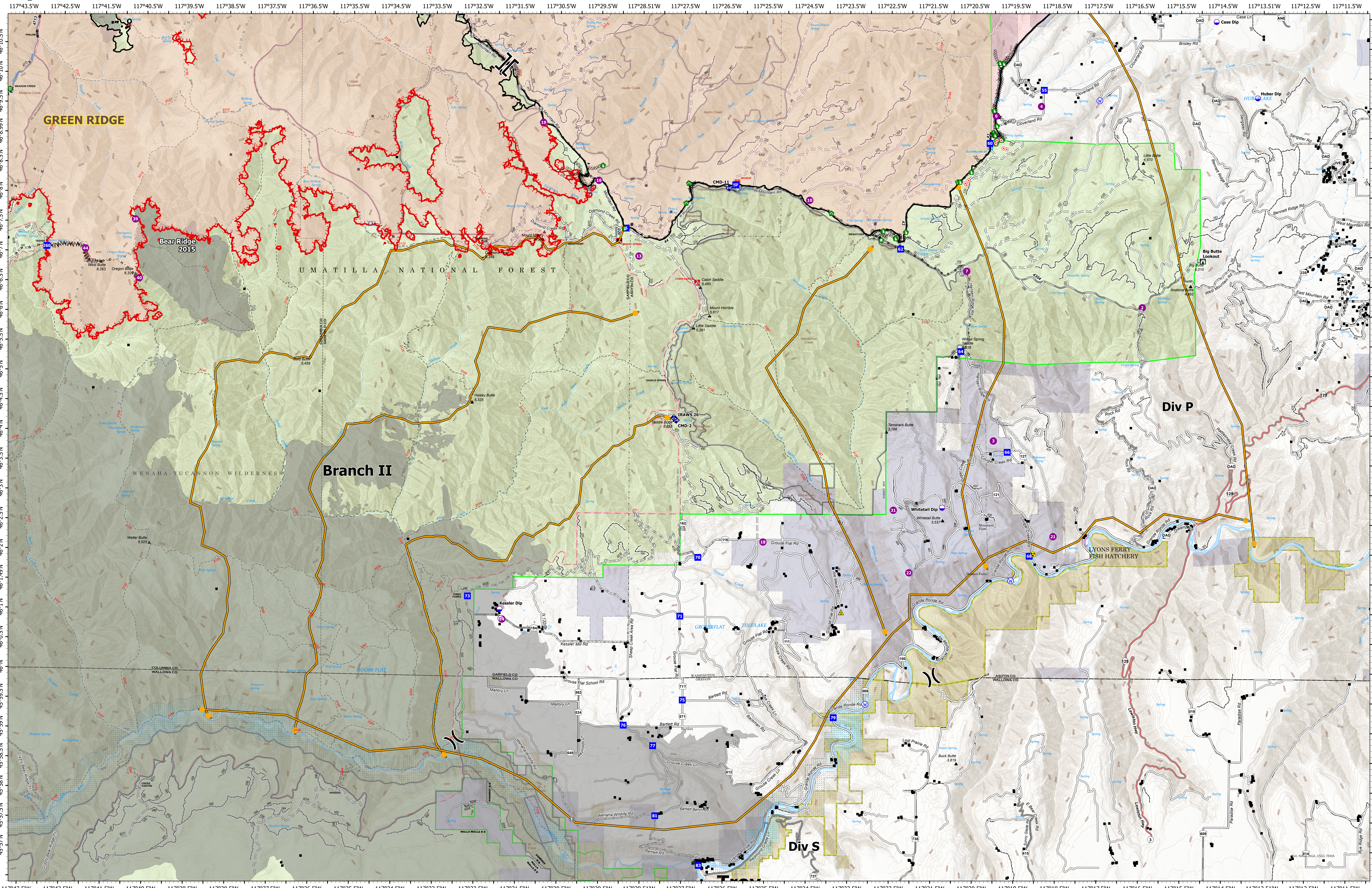


# Operations - Div S



**Green Ridge**  
 OR-UMF-000659  
 39,598 acres as of 8/27/2021@2003

**Lick Creek**  
 OR-UMF-000658  
 80,421 acres as of 8/24/2021@2051

8/28/2021  
 North American 1983 Datum.  
 Lat/Long Grid

- |   |  |   |  |  |  |
|---|--|---|--|--|--|
| <ul style="list-style-type: none"> <li>■ Structures</li> <li>✈ Airstrip or Airport</li> <li>○ Dip Site</li> <li>○ Other</li> <li>○ Helispot</li> <li>X Division Break</li> <li>J Branch Break</li> <li>■ Drop Point</li> <li>□ Lookout</li> </ul> | <ul style="list-style-type: none"> <li>○ Hot Spot - Spot Fire</li> <li>○ Value at Risk</li> <li>○ Other</li> <li>○ Gate</li> <li>○ Structure Wrap</li> <li>○ Dozer Push</li> <li>○ Culvert</li> <li>○ Clean Up Area</li> </ul> | <ul style="list-style-type: none"> <li>◆ Mobile Weather Unit</li> <li>◆ Repeater</li> <li>◆ Safety Zone</li> <li>◆ Hazard</li> <li>◆ Water Source</li> <li>◆ Completed Dozer Line</li> <li>◆ Completed Fuel Break</li> <li>◆ Completed Hand Line</li> </ul> | <ul style="list-style-type: none"> <li>R - Completed Road as Line</li> <li>— Planned Dozer Line</li> <li>— Planned Fuel Break</li> <li>— Planned Hand Line</li> <li>— Planned Road as Line</li> <li>— Access or Improved Road</li> <li>— Management Action Point</li> <li>— Repair Line</li> </ul> | <ul style="list-style-type: none"> <li>— Fire Edge</li> <li>— Contained Line</li> <li>— Secondary Highway</li> <li>— Paved Roads</li> <li>— Dirt (Not Paved)</li> <li>— Gravel Road</li> <li>— Dirt Roads</li> <li>— Unimproved Roads</li> </ul> | <ul style="list-style-type: none"> <li>— Closed Roads</li> <li>— Federal Wilderness Boundary</li> <li>— Fire History</li> <li>— U.S. Forest Service</li> <li>— Bureau of Land Management</li> <li>— State Land</li> <li>— Other Land, Including Private</li> </ul> |
|---|--|---|--|--|--|

