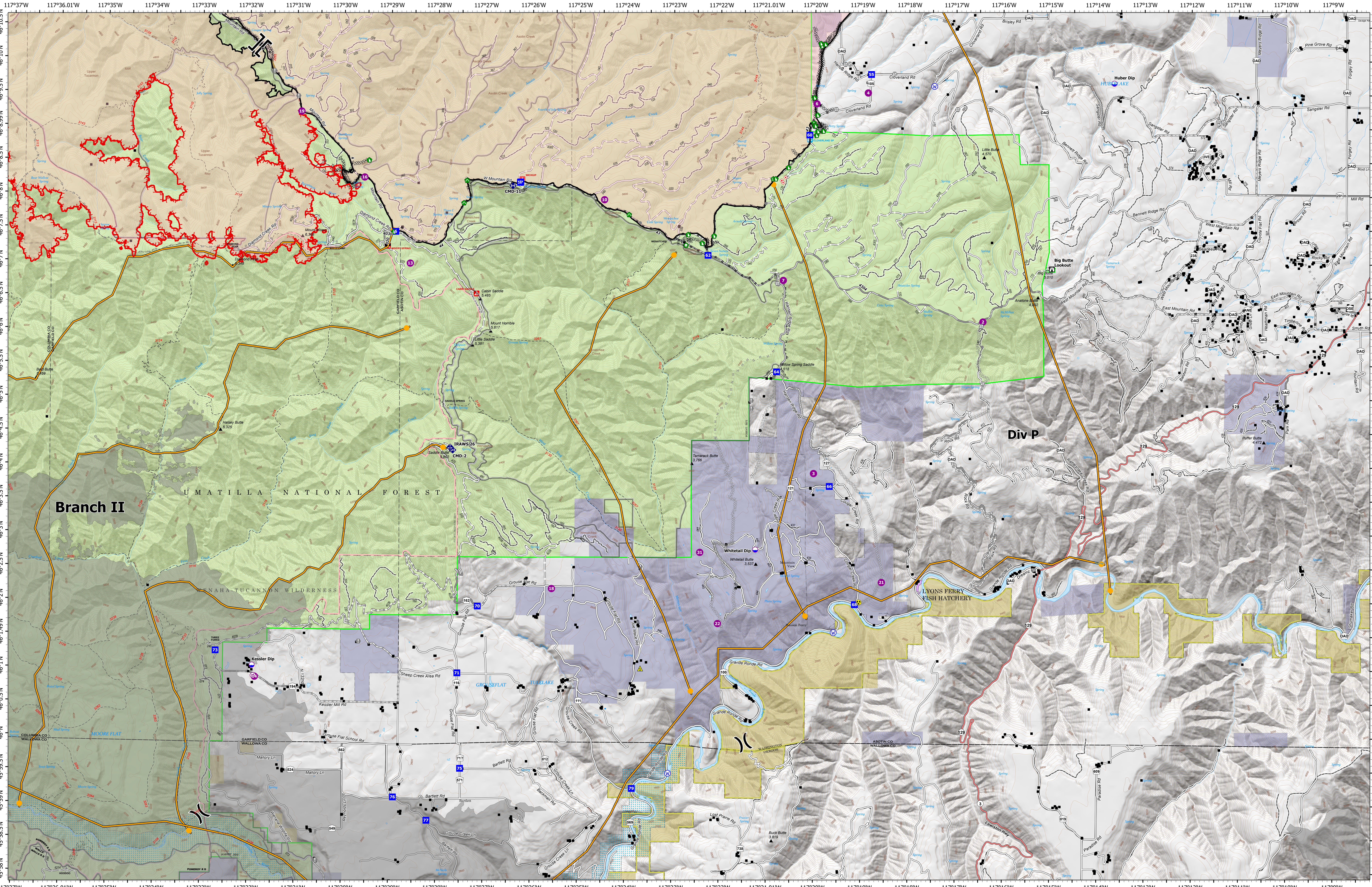


Operations - Div P



Green Ridge
 OR-UMF-000659
 40,059 acres as of 8/30/2021@ 2010

Lick Creek
 OR-UMF-000658
 80,421 acres as of 8/24/2021@2051

9/1/2021
 North American 1983 Datum.
 Lat/Long Grid

- | | | | | | |
|-----------------------|------------------------|--------------------------|---------------------------|-------------------------------|---------------------------------|
| ■ Structures | ● Hot Spot - Spot Fire | ◆ Mobile Weather Unit | ⋯ Planned Dozer Line | — Secondary Highway | ■ Fire History |
| ○ Airstrip or Airport | ● Value at Risk | ◆ Repeater | ⋯ Planned Hand Line | — Paved Roads | ■ U.S. Forest Service |
| ● Dip Site | ● Safety Zone | ◆ Safety Zone | ⋯ Planned Road as Line | — Dirt (Not Paved) | ■ Bureau of Land Management |
| ● Helispot | ● Gate | ◆ Hazard | — Access or Improved Road | — Gravel Road | ■ State Land |
| ⊗ Division Break | ● Structure Wrap | ● Water Source | — Management Action Point | — Dirt Roads | ■ Other Land, Including Private |
| ⊔ Branch Break | ● Custer Push | ⋯ Completed Dozer Line | — Repair Line | — Unimproved Roads | |
| ● Drop Point | ● Culvert | ⋯ Completed Hand Line | — Fire Edge | — Closed Roads | |
| □ Lookout | ● Clean Up Area | ● Completed Road as Line | — Contained Line | — Federal Wilderness Boundary | |

