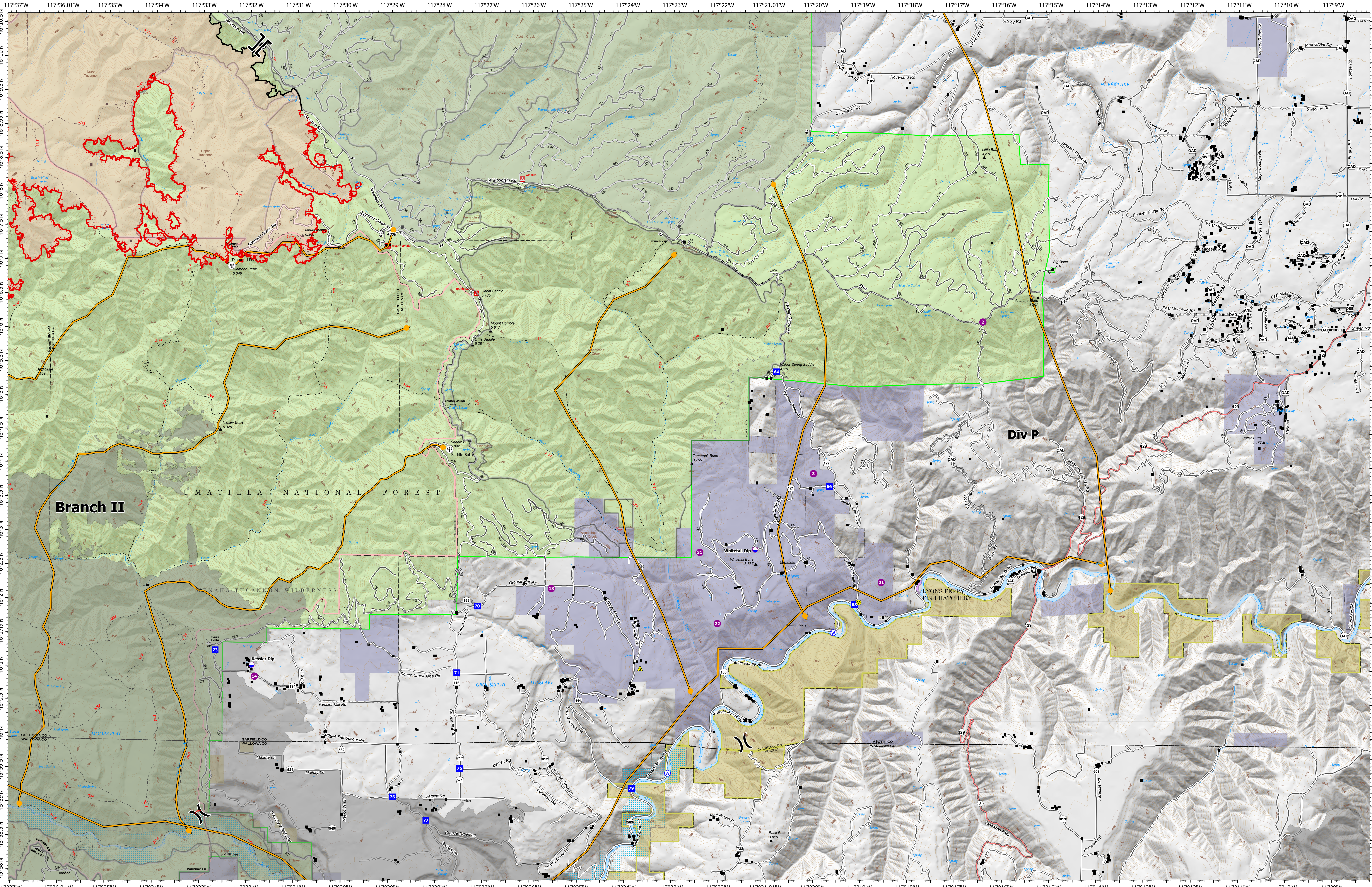


Operations - Div P



Green Ridge
OR-UMF-000659
 40,529 acres as of 9/2/2021@ 1937

As of 9/4/2021
 North American 1983 Datum.
 LatLong Grid

- | | | | | |
|--|--|---|---|--|
| <ul style="list-style-type: none"> ■ Structures ● Dip Site ○ Helispot X Division Break II Branch Break ■ Drop Point ● Other | <ul style="list-style-type: none"> ▲ Safety Zone ★ Hazard ● Water Source R - Completed Road as Line ⋯ Planned Dozer Line ⋯ Planned Hand Line R - Planned Road as Line | <ul style="list-style-type: none"> — Access or Improved Road — Management Action Point — Fire Edge — Contained Line — Secondary Highway — Paved Roads — Dirt (Not Paved) | <ul style="list-style-type: none"> — Gravel Road — Dirt Roads — Unimproved Roads — Closed Roads — Federal Wilderness Boundary — Fire History — U.S. Forest Service | <ul style="list-style-type: none"> ■ Bureau of Land Management ■ State Land ■ Other Land, Including Private ⊕ FS Repeaters |
|--|--|---|---|--|

