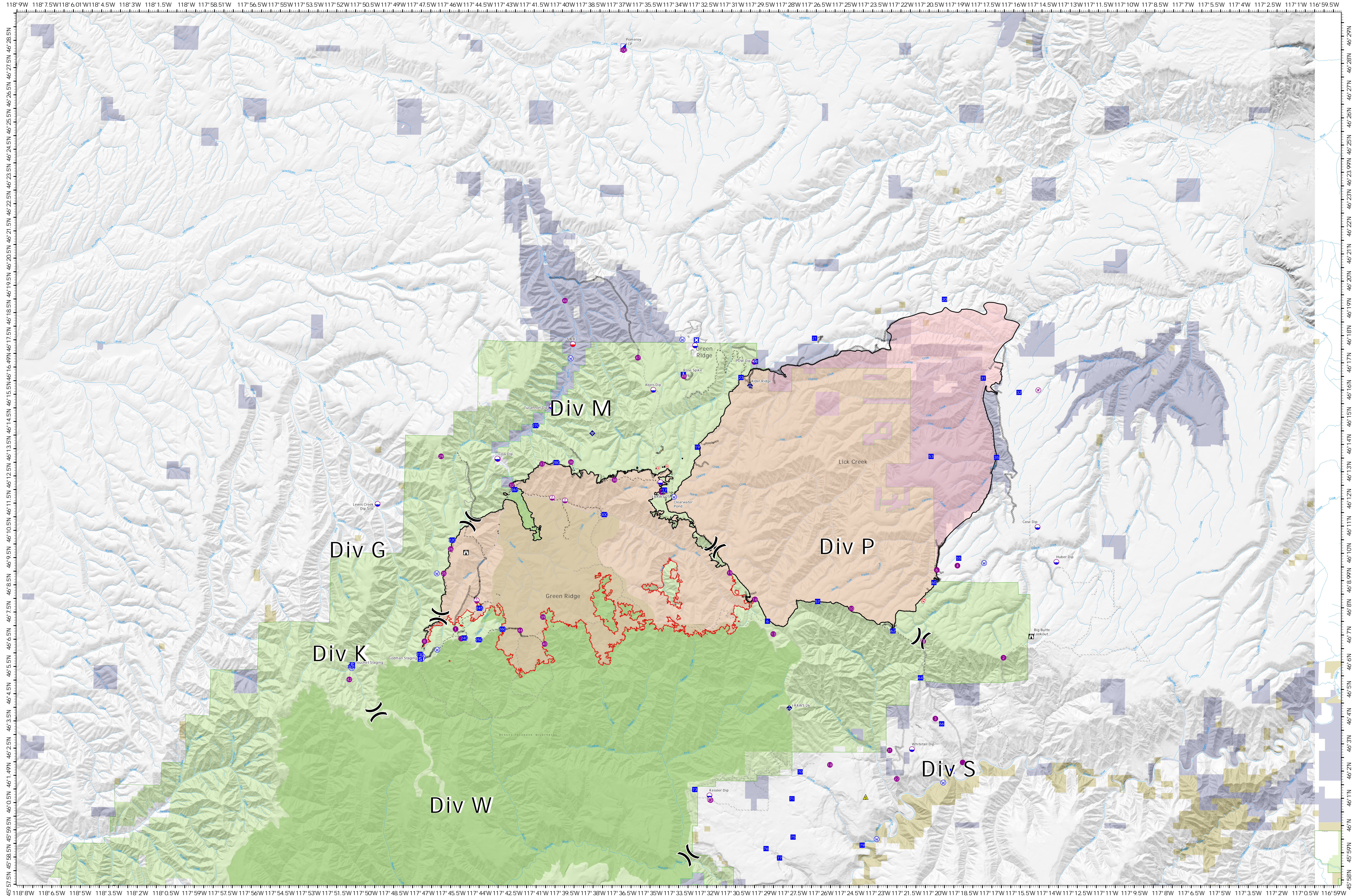


# Briefing



**Green Ridge**  
OR-UMF-000659

Estimated Acreage: 41,867 acres at 9/6/2021 @ 1942

- |                         |                         |                        |                                     |                                   |                       |                                 |
|-------------------------|-------------------------|------------------------|-------------------------------------|-----------------------------------|-----------------------|---------------------------------|
| ○ Airstrip or Airport   | ■ Incident Command Post | ● Hot Spot - Spot Fire | ⊞ Completed Dozer Line              | ⊞ Planned Dozer Line              | ▬ Fence               | ▬ Federal Wilderness Boundary   |
| ○ Dip Site              | ■ Drop Point            | ● Mobile Weather Unit  | ⊞ Completed Fuel Break              | ⊞ Planned Fuel Break              | ⋯ Highlighted Feature | ▬ U.S. Forest Service           |
| ● Mobile Retardant Base | ■ Closure               | ◆ Internet Access      | ⊞ Completed Hand Line               | ⊞ Planned Hand Line               | ⋯ Other               | ▬ Bureau of Land Management     |
| ● Helispot              | ■ Camp                  | ▲ Safety Zone          | ⊞ Completed Mixed Construction Line | ⊞ Planned Mixed Construction Line | ▬ Repair Line         | ▬ State Land                    |
| ● Sling Site            | ■ Staging Area          | ● Water Source         | ⊞ Completed Plow Line               | ⊞ Planned Plow Line               | ▬ Fire Edge           | ▬ Other Land, Including Private |
| ⊞ Division Break        | ■ Lookout               | ● Label Point          | ⊞ Completed Road as Line            | ⊞ Planned Road as Line            | ▬ Contained Line      |                                 |

