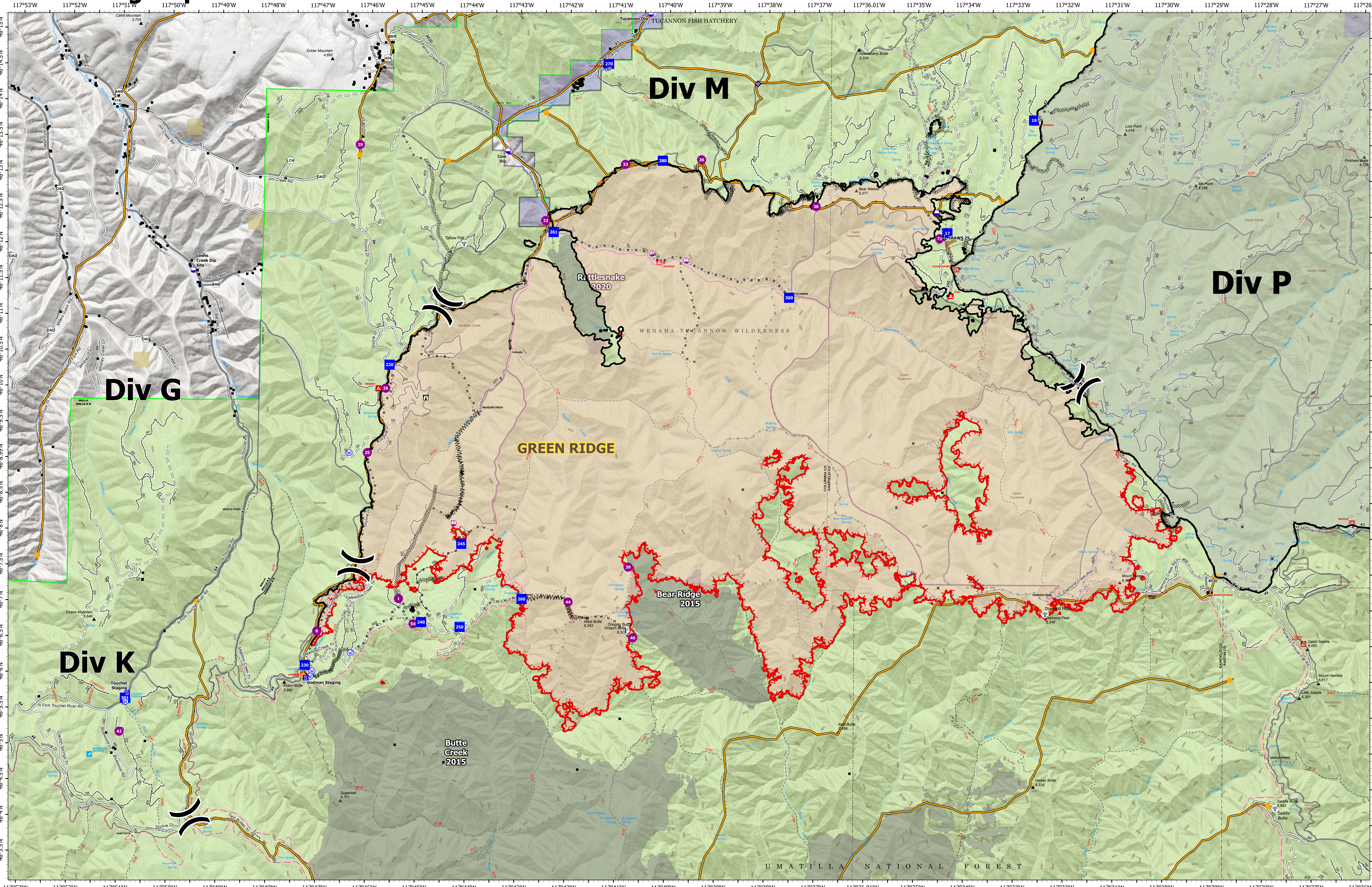


# Green Ridge Operations Overview



Green Ridge  
 OR-UMF-000659  
 42,722 acres as of 9/8/2021@ 2215

As of 9/8/2021  
 North American 1983 Datum,  
 Lat,Long Grid

- |   |  |   |   |
|---|--|---|---|
| <ul style="list-style-type: none"> <li>■ Structures</li> <li>◆ Dip Site</li> <li>● Helispot</li> <li>○ Sling Site</li> <li>⌋ Division Break</li> <li>■ Drop Point</li> <li>■ Staging Area</li> <li>■ Lookout</li> <li>○ Hot Spot - Spot Fire</li> </ul> | <ul style="list-style-type: none"> <li>◆ Mobile Weather Unit</li> <li>◆ Internet Access</li> <li>● Water Source</li> <li>⊞ Completed Dozer Line</li> <li>⊞ Completed Fuel Break</li> <li>⊞ Completed Hand Line</li> <li>⊞ Completed Mixed Construction Line</li> <li>⊞ Completed Road as Line</li> <li>⊞ Planned Dozer Line</li> </ul> | <ul style="list-style-type: none"> <li>⊞ Planned Fuel Break</li> <li>⊞ Planned Hand Line</li> <li>⊞ Planned Road as Line</li> <li>⊞ Access or Improved Road</li> <li>⊞ Highlighted Feature</li> <li>⊞ Management Action Point</li> <li>⊞ Other</li> <li>⊞ Repair Line</li> <li>⊞ Fire Edge</li> </ul> | <ul style="list-style-type: none"> <li>⊞ Contained Line</li> <li>⊞ Paved Roads</li> <li>⊞ Dirt (Not Paved)</li> <li>⊞ Paved Road</li> <li>⊞ Gravel Road</li> <li>⊞ Unimproved Roads</li> <li>⊞ Closed Roads</li> <li>⊞ Federal Wilderness Boundary</li> <li>⊞ Fire History</li> </ul> |
|---|--|---|---|

- |  |
|--|
| <ul style="list-style-type: none"> <li>■ U.S. Forest Service</li> <li>■ Bureau of Land Management</li> <li>■ State Land</li> <li>■ Other Land, Including Private</li> <li>■ Green Ridge</li> <li>■ Lick Creek</li> </ul> |
|--|

