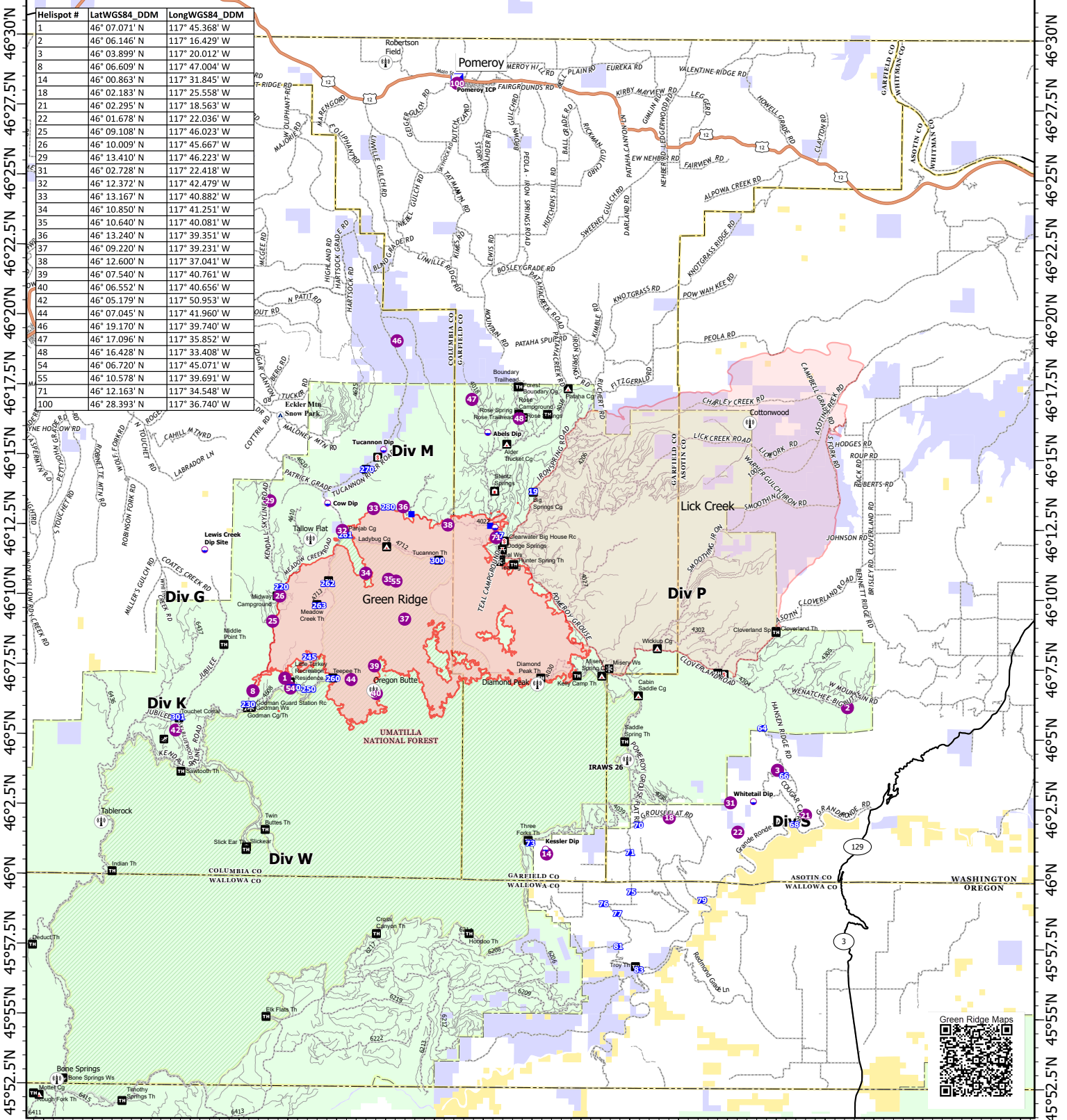


Aviation

117°57.5'W 117°52.5'W 117°47.5'W 117°42.5'W 117°37.5'W 117°32.5'W 117°27.5'W 117°22.5'W 117°17.5'W 117°12.5'W 117°7.5'W



117°57.5'W 117°52.5'W 117°47.5'W 117°42.5'W 117°37.5'W 117°32.5'W 117°27.5'W 117°22.5'W 117°17.5'W 117°12.5'W 117°7.5'W

Green Ridge
OR-UMF-000659

42,722 acres at
9/8/2021@ 2215

North American 1983 Datum.
Lat/Long Grid

- Secondary Hwy
- Local Connector
- Local Road
- 4WD
- ArterialRoadsUmatillaNF
- MainRoadsUmatillaNF
- Roads3digit
- State Highway
- US Highway
- Dip Site
- Helispot
- Incident Command Post
- Drop Point
- ⊕ FS Repeaters
- ⬆ Campground
- ⬆ Campground
- ⬆ Lookout/Cabin
- ⬆ Picnic Site
- ⬆ Recreation Residence
- ⬆ Ski Area Alpine
- ⬆ Snowpark
- ⬆ Snowplay Area
- ⬆ Trailhead
- Wildfire Daily Fire Perimeter



0 2.5 5 Miles