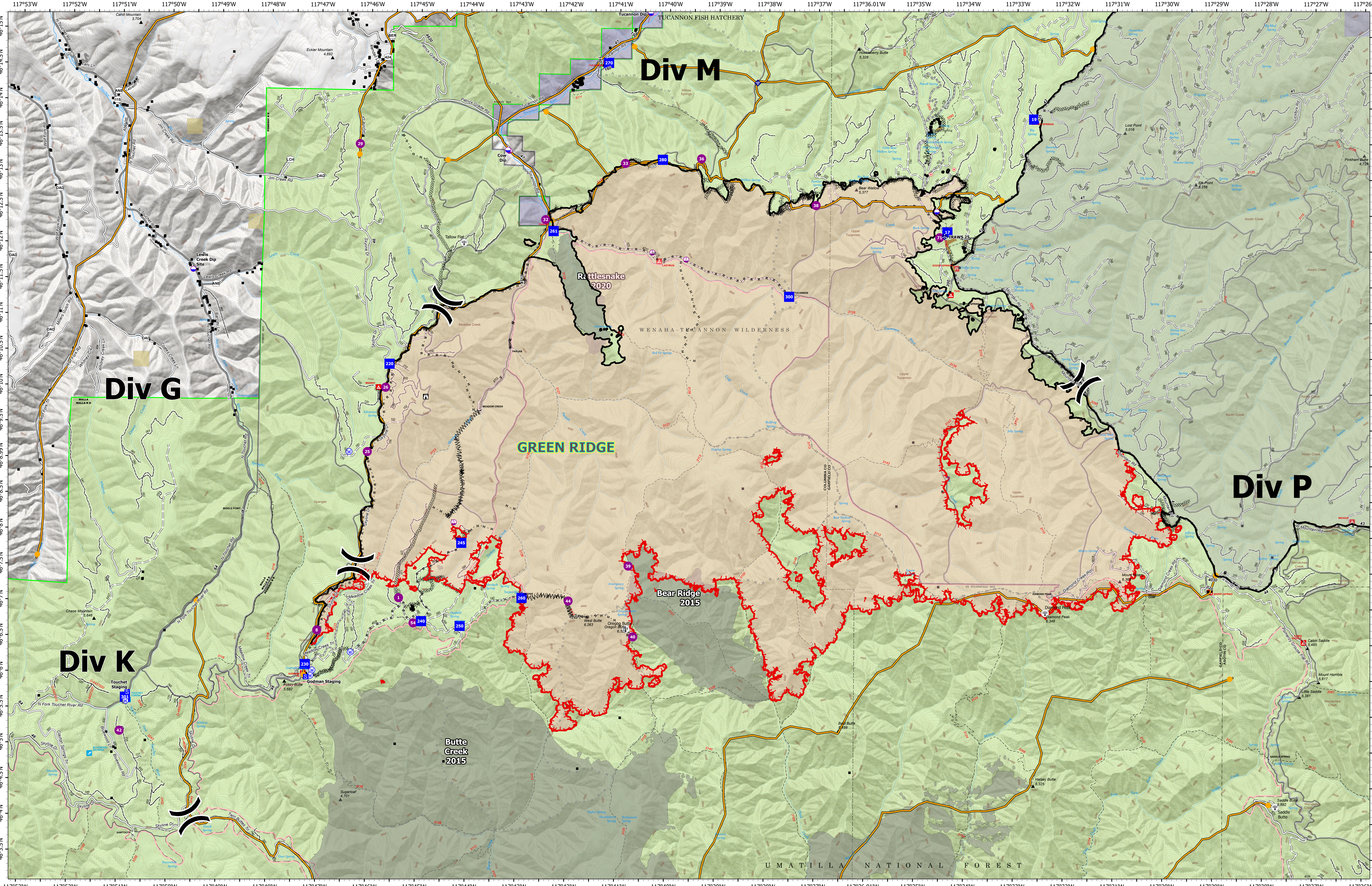


# Green Ridge Operations Overview



**Green Ridge**  
**OR-UMF-000659**  
 43,465 acres as of 9/14/2021@ 2022

As of 9/10/2021  
 North American 1983 Datum,  
 Lat,Long Grid

- |   |  |   |   |
|---|--|---|---|
| <ul style="list-style-type: none"> <li>■ Structures</li> <li>◆ Dip Site</li> <li>● Helispot</li> <li>○ Sling Site</li> <li>⌋ Division Break</li> <li>● Drop Point</li> <li>■ Staging Area</li> <li>□ Lookout</li> <li>○ Hot Spot - Spot Fire</li> </ul> | <ul style="list-style-type: none"> <li>◆ Mobile Weather Unit</li> <li>◆ Internet Access</li> <li>● Water Source</li> <li>⋯ Completed Dozer Line</li> <li>⋯ Completed Fuel Break</li> <li>⋯ Completed Hand Line</li> <li>⋯ Completed Mixed Construction Line</li> <li>⋯ Completed Road as Line</li> <li>⋯ Planned Dozer Line</li> </ul> | <ul style="list-style-type: none"> <li>⋯ Planned Fuel Break</li> <li>⋯ Planned Hand Line</li> <li>⋯ Planned Road as Line</li> <li>⋯ Access or Improved Road</li> <li>⋯ Highlighted Feature</li> <li>⋯ Management Action Point</li> <li>⋯ Other</li> <li>⋯ Repair Line</li> <li>⋯ Fire Edge</li> </ul> | <ul style="list-style-type: none"> <li>— Contained Line</li> <li>— Paved Roads</li> <li>— Dirt (Not Paved)</li> <li>— Paved Road</li> <li>— Gravel Road</li> <li>— Unimproved Roads</li> <li>— Closed Roads</li> <li>— Federal Wilderness Boundary</li> <li>— Fire History</li> </ul> |
|---|--|---|---|

- |  |
|--|
| <ul style="list-style-type: none"> <li>■ U.S. Forest Service</li> <li>■ Bureau of Land Management</li> <li>■ State Land</li> <li>■ Other Land, Including Private</li> <li>■ Green Ridge</li> <li>■ Lick Creek</li> </ul> |
|--|
- Scale: 0 0.5 1 2 Miles

Green Ridge Maps