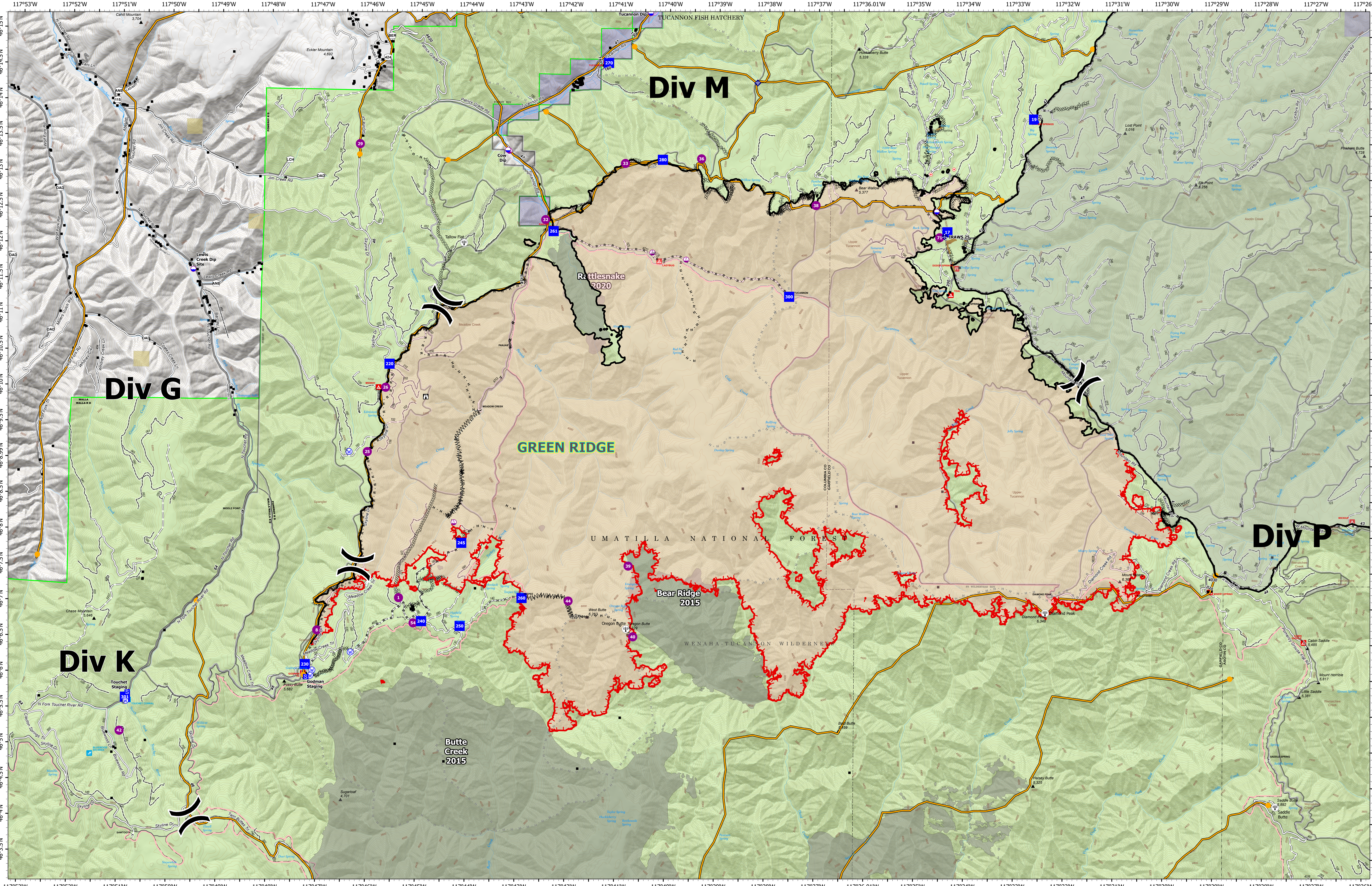


Green Ridge Operations Overview



Green Ridge
 OR-UMF-000659
 43,589 acres as of 9/16/2021@ 1958

- | | | | |
|---|--|---|---|
| <ul style="list-style-type: none"> ■ Structures ◆ Dip Site ● Helispot ○ Sling Site ⌋ Division Break ● Drop Point ■ Staging Area □ Lookout ○ Hot Spot - Spot Fire | <ul style="list-style-type: none"> ◆ Mobile Weather Unit ◆ Internet Access ● Water Source ⋯ Completed Dozer Line ⋯ Completed Fuel Break ⋯ Completed Hand Line ⋯ Completed Mixed Construction Line ⋯ Completed Road as Line ⋯ Planned Dozer Line | <ul style="list-style-type: none"> ⋯ Planned Fuel Break ⋯ Planned Hand Line ⋯ Planned Road as Line ⋯ Access or Improved Road ⋯ Highlighted Feature ⋯ Management Action Point ⋯ Other ⋯ Repair Line ⋯ Fire Edge | <ul style="list-style-type: none"> — Contained Line — Paved Roads — Dirt (Not Paved) — Paved Road — Gravel Road — Unimproved Roads — Closed Roads — Federal Wilderness Boundary — Fire History |
|---|--|---|---|

- U.S. Forest Service
- Bureau of Land Management
- State Land
- Other Land, Including Private
- Green Ridge
- Lick Creek

