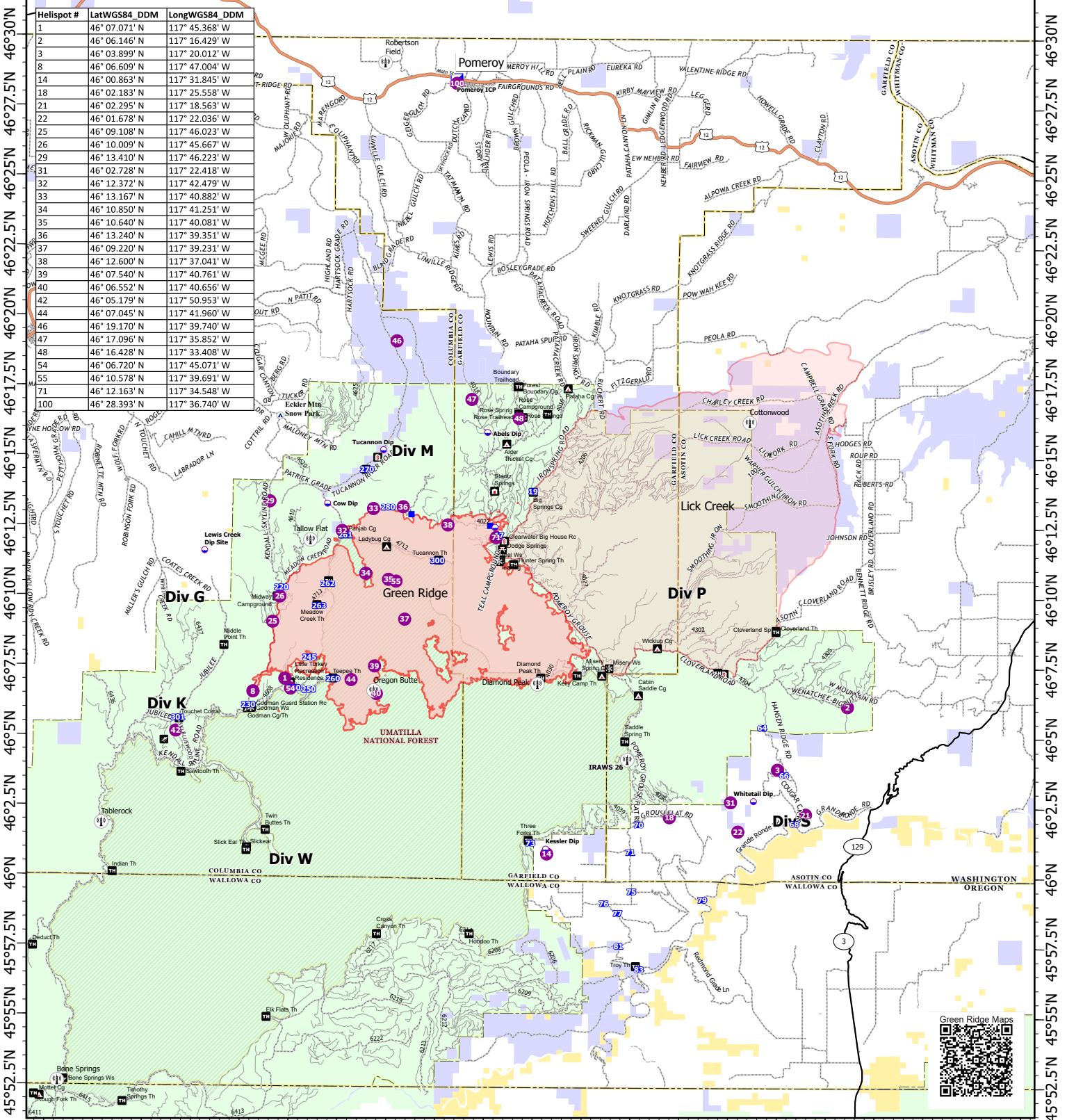


# Aviation

117°57.5'W 117°52.5'W 117°47.5'W 117°42.5'W 117°37.5'W 117°32.5'W 117°27.5'W 117°22.5'W 117°17.5'W 117°12.5'W 117°7.5'W



117°57.5'W 117°52.5'W 117°47.5'W 117°42.5'W 117°37.5'W 117°32.5'W 117°27.5'W 117°22.5'W 117°17.5'W 117°12.5'W 117°7.5'W

Green Ridge  
OR-UMF-000659

43,589 acres at  
9/16/2021@ 1958

North American 1983 Datum.  
Lat/Long Grid

- Secondary Hwy
- Roads3digit
- Drop Point
- Recreation Residence
- Local Connector
- State Highway
- FS Repeaters
- Ski Area Alpine
- Local Road
- US Highway
- Campground
- Snowpark
- 4WD
- Dip Site
- Campground
- Snowplay Area
- ArterialRoadsUmatillaNF
- Helispot
- Lookout/Cabin
- Trailhead
- MainRoadsUmatillaNF
- Incident Command Post
- Picnic Site
- Wildfire Daily Fire Perimeter



0 2.5 5 Miles