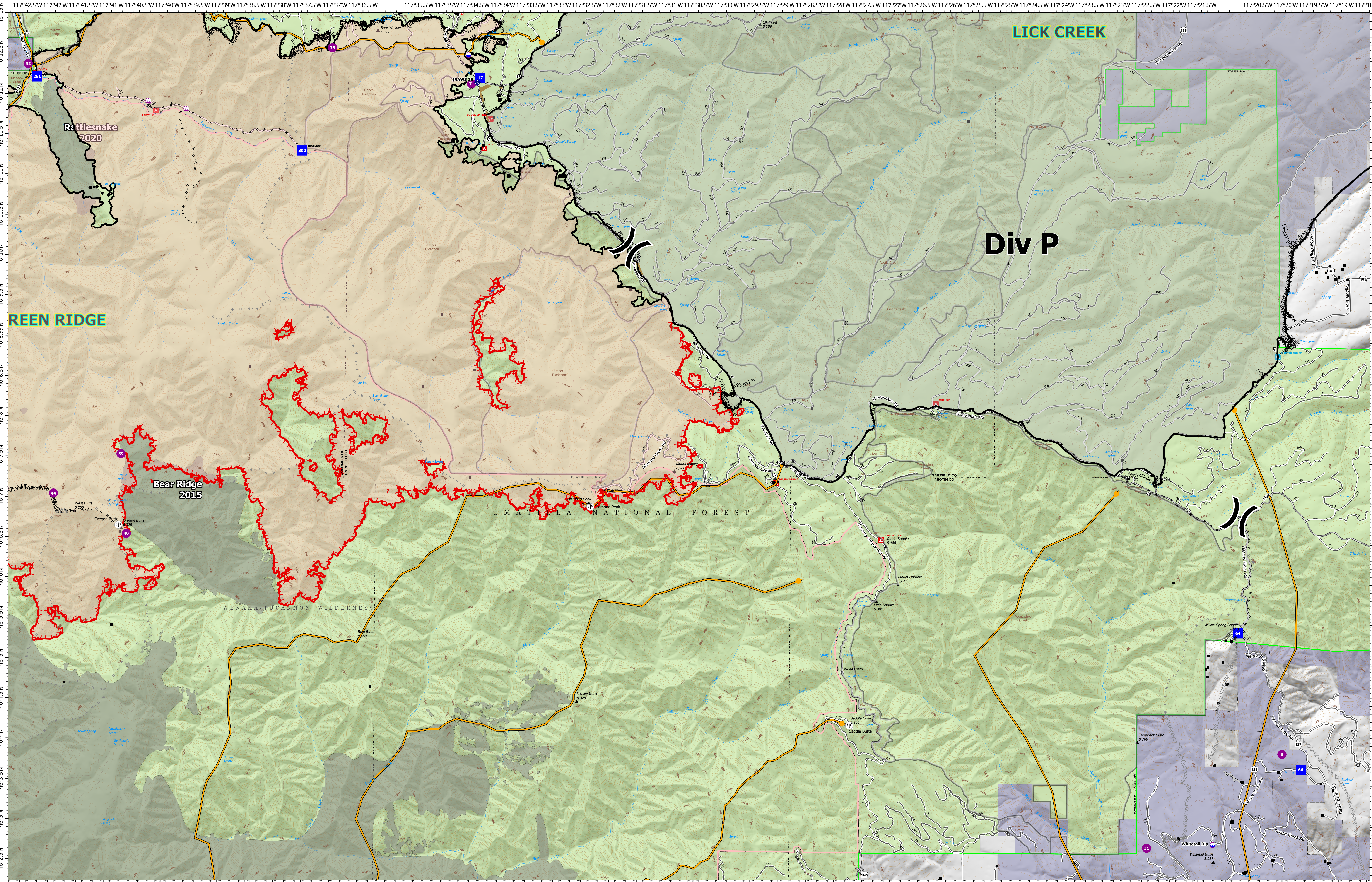


Operations Div P



Green Ridge
OR-UMF-000659
 43,589 acres as of 9/16/2021@ 1958

- | | | | | |
|--|---|---|--|--|
| <ul style="list-style-type: none"> ■ Structures ● Dip Site ● Helispot ● Sling Site ⌋ Division Break ● Drop Point ● Hot Spot - Spot Fire | <ul style="list-style-type: none"> ◆ Mobile Weather Unit ⊘ Completed Dozer Line M Completed Fuel Break ⊘ Completed Hand Line ⊘ Completed Mixed Construction Line ⊘ Completed Road as Line ⊘ Planned Dozer Line | <ul style="list-style-type: none"> M Planned Fuel Break H Planned Hand Line ⊘ Planned Road as Line ⊘ Access or Improved Road ⊘ Management Action Point ⊘ Other ⊘ Repair Line | <ul style="list-style-type: none"> ▬ Fire Edge ▬ Contained Line ▬ Dirt (Not Paved) ▬ Gravel Road ▬ Dirt Roads ▬ Unimproved Roads ▬ Closed Roads | <ul style="list-style-type: none"> ▬ Federal Wilderness Boundary ▬ Fire History ▬ U.S. Forest Service ▬ State Land ▬ Other Land, Including Private ▬ Green Ridge ▬ Lick Creek |
|--|---|---|--|--|

