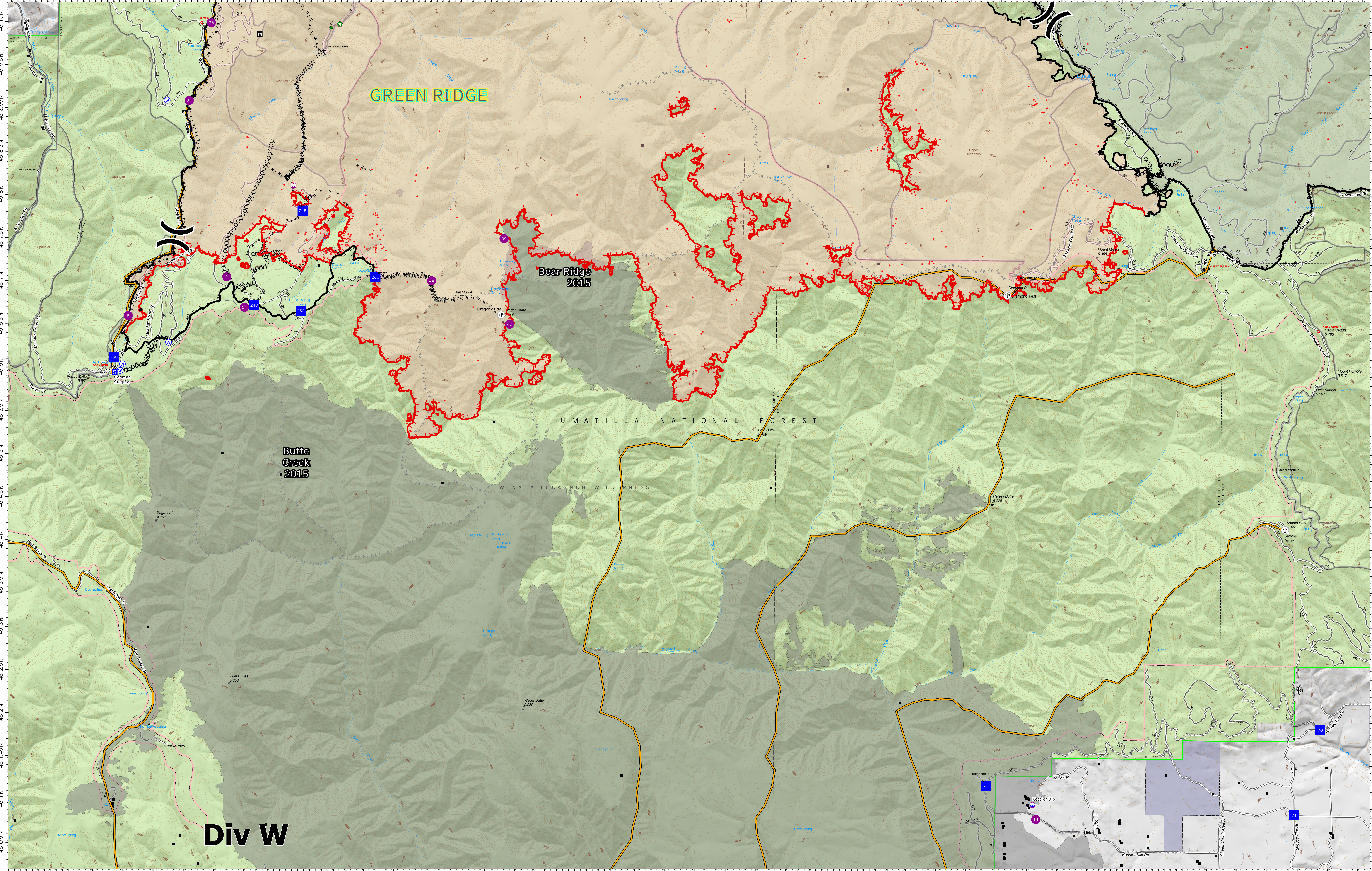


Operations Div W

117°49'W 117°48.5'W 117°48'W 117°47.5'W 117°47'W 117°46.5'W 117°46'W 117°45.5'W 117°45'W 117°44.5'W 117°44'W 117°43.5'W 117°43'W 117°42.5'W 117°42'W 117°41.5'W 117°41'W 117°40.5'W 117°40'W 117°39.5'W 117°39'W 117°38.5'W 117°38'W 117°37.5'W 117°37'W 117°36.5'W 117°36'W 117°35.5'W 117°35'W 117°34.5'W 117°34'W 117°33.5'W 117°33'W 117°32.5'W 117°32'W 117°31.5'W 117°31'W 117°30.5'W 117°30'W 117°29.5'W 117°29'W 117°28.5'W 117°28'W 117°27.5'W 117°27'W 117°26.5'W



Green Ridge
OR-UMF-000659
43,726 acres as of 9/25/2021 @ 1908

As of 9/17/2021
North American 1983 Datum.
Lat/Long Grid

- | | | | | |
|------------------|-------------------------------------|---------------------------|--------------------|---------------------------------|
| ■ Structures | ○ Retardant in Avoidance Area | ○ Planned Dozer Line | ■ Fire Edge | ■ Federal Wilderness Boundary |
| ● Dip Site | ● Repair Point | ○ Planned Fuel Break | ▬ Contained Line | ■ Fire History |
| ● Heliport | ● Water Source | ▬ Planned Fuel Break | ▬ Paved Roads | ■ U.S. Forest Service |
| ○ Sling Site | ○ Completed Dozer Line | ▬ Planned Hand Line | ▬ Dirt (Not Paved) | ■ State Land |
| ▬ Division Break | ▬ Completed Fuel Break | ▬ Planned Road as Line | ▬ Paved Road | ■ Other Land, Including Private |
| ▬ Drop Point | ▬ Completed Hand Line | ▬ Highlighted Feature | ▬ Gravel Road | ■ Green Ridge |
| ▬ Staging Area | ▬ Completed Mixed Construction Line | ▬ Management Action Point | ▬ Unimproved Roads | ▬ Lick Creek |
| □ Lookout | ▬ Completed Road as Line | ▬ Other | ▬ Closed Roads | ▬ IR Growth Sept 21-23 |

Green Ridge Maps

0 0.75 1.5 3 Miles