

# INCIDENT ACTION PLAN

## LICK CREEK/GREEN RIDGE INCIDENT

OR-UMF-000658 (Lick Creek)

OR-UMF-000659 (Green Ridge)

WA-SES-020655 (Dry Gulch)

*\* Corrected \**



Communications 24-Hour  
Emergency Number:

971-727-7965

Thursday

Maps, IAP, Virtual Briefing



### OPERATIONAL PERIOD

8/5/2021

0600

*COVID Symptoms?*

to

*Call:*

8/6/2021

0600

*(971) 245-9407*



# INCIDENT OBJECTIVES (ICS 202)

<b>1. Incident Name:</b> LICK CREEK/GREEN RIDGE	<b>2. Operational Period:</b>	Date From: 8/5/2021 Time From: 0600	Date To: 8/6/2021 Time To: 0600
--	-------------------------------	--	------------------------------------

**3. Objective(s):**

- Strategic Objectives:**
- Provide for the safety of fire fighters and the public through utilization of strategic and deliberate risk assessment processes. Ensure incident within an incident protocols are established.
  - Develop and implement operational objectives based on identified values at risk and highest probability of success limiting fire spread.
  - Follow established guidelines and mitigations regarding COVID and other infectious diseases.
  - Enhance relationships through timely communication and active involvement with the public, stakeholders, and cooperators.
  - Coordinate with the READ's to ensure natural and historical values are protected to the degree necessary.
  - Maintain fiscal responsibility keeping cost commensurate with the values at risk.
  - Provide initial attack response to new fire starts within the TFR boundary. Assist with initial attack efforts outside the boundary as requested.

**Lick Creek Operational Objective:**

- Keep fire within its currently identified perimeter.

**Green Ridge Operational Objective:**

- Keep fire north of the 2015 Butte Creek Burn scar along the West Butte Creek Trail to the East Butte Creek Trail to Yearling Ridge Trail to Crooked Creek Trail to Monument Ridge and along the First Creek Trail to NF 40 at Misery. Protect Little Turkey Tail Recreation residences and the Godman Guard Station.
- Keep fire east of FS road 64 to protect private property, structures, and recreation sites.
- Keep fire south of the Panjab Trailhead to Panjab Campground along the Salter Trail to the 4022 Road towards Clear Water.
- Keep fire west of NF 40 Road. Minimize suppression impacts in the Wenaha-Tucannon Wilderness using natural containment features as practical.

**COVID Mitigations:**

- All persons must wear a mask indoors at all times regardless of vaccination status, as well as outdoors when physical distancing cannot be maintained.
- Maintain a module as one, wash your hands and sanitize surfaces.

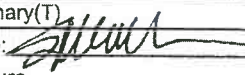
**6. Incident Action Plan**

<input checked="" type="checkbox"/> ICS 203	<input type="checkbox"/> ICS 215A	<input type="checkbox"/> ICS 205 A	<input type="checkbox"/>
<input checked="" type="checkbox"/> ICS 204	<input checked="" type="checkbox"/> ICS 220	<input checked="" type="checkbox"/> Training Message	<input type="checkbox"/>
<input checked="" type="checkbox"/> ICS 205	<input checked="" type="checkbox"/> Facility Maps	<input type="checkbox"/> Travel Map	<input type="checkbox"/>
<input checked="" type="checkbox"/> ICS 206	<input checked="" type="checkbox"/> Weather Forecast	<input checked="" type="checkbox"/> Demob Plan	<input type="checkbox"/> County Health Message
<input checked="" type="checkbox"/> ICS 208	<input checked="" type="checkbox"/> Fire Behavior	<input checked="" type="checkbox"/> Finance Message	<input checked="" type="checkbox"/> ICS 214

**7. Prepared By:** *for* Greg White      Position/Title: PSC(T)      Signature:

**8. Approved by Incident Commander:** *for* Mike Nobles      Signature:

## ORGANIZATION ASSIGNMENT LIST (ICS 203)

<b>1. Incident Name:</b> LICK CREEK/GREEN RIDGE		<b>2. Operational Period: Date From:</b> 8/5/2021		<b>Date To:</b> 8/6/2021	
		<b>Time From:</b> 0600		<b>Time To:</b> 0600	
<b>3. Incident Commander(s) and Command Staff:</b>			<b>7. Operation Section:</b>		
IC/UC's	Mike Nobles, James Aragon(T)	Operations	John Owings, Michael Page(T)		
Deputy	Alan Taylor	Planning Ops	Jim Snow		
Safety Officer	Mark Helm, Mike Seymour(T)	Night Ops	Al Ward		
Information Officer	Alex Olow, DeLyn Sieliet(T), Stephanie Bishop(T)				
Liaison Officer	Allen Johnson, Don Smith(T)	<b>Branch</b>	<b>GREEN RIDGE</b>		
<b>4. Agency/Organization Representatives:</b>		Division/Group	A	Nathan Leatherman	
Agency/Organization	Name	Division/Group	G	Jason Flores	
USFS AADM	Ed Guzman	Division/Group	K/M	Kristian Litz, Daniel Kamakani(T)	
USFS AREP	Bob Foxworth, Susan Piper	Division/Group	P/S		
WA DNR	Wyatt Leighton, Tom Schoenfelder	Division/Group	NIGHT	Jeff Corser(T)	
Asotin Co Fire Dist 1	Noel Hardin	<b>Branch</b>	<b>LICK</b>	<b>Robert Szczepanek</b>	
Columbia Co Fire 3	Jeromy Phinney	Division/Group	D/H/T/W	Neal McCann(T)	
Garfield Co Fire Dist 1	James Cleveland	Division/Group			
WFS	Devin McCosh	Division/Group			
WDFW - LEO	Paul Mosman	Division/Group			
Covid Liaison	Cass Monroe, Steve Medina	Division/Group			
		<b>Branch</b>	<b>CONTINGENCY</b>	<b>Greg Overacker</b>	
		Division/Group	NORTH	Andy Juarez	
		Division/Group	SOUTH	Andy Wordin(T)	
		Division/Group			
<b>5. Planning Section:</b>		Division/Group			
Chief	Steve Anderson, Greg White(T)	Division/Group			
Deputy	Ken Bates	<b>Branch</b>			
Resource Unit	Josh Clark, Mike Yeun(T)	Division/Group			
Situation Unit	John Hunter, Ray Rook(T)	Division/Group			
Demobilization Unit	Jan Grisedale	Division/Group			
Documentation Unit	Joey Kosiorowski(V)	Division/Group			
GISS	Rene Gonzalez, Greg Elwood, Jenny Garstang(T), Anthony Scavone(T)	Division/Group			
FBAN	Dan O'Connor	<b>Branch</b>			
IMET	Mary Wister	Division/Group			
Human Resources	Bill Otani	Division/Group			
Air Resources Advisor	Katy Warner	Division/Group			
Lead READ	Will Marquardt	Division/Group			
Training Specialist	Seneca Smith	Division/Group			
		<b>Air Operations Branch</b>		<b>Director:</b>	<b>JoAnn Overacker</b>
		Air Tactical Group Supervisor		Kevin King	
		Helibase Manager		Austin McDonald(T)	
<b>6. Logistics Section</b>					
Chief	Scott Ashbach				
Supply Unit	Ruben Lopez(T)				
Facilities Unit	Art Curley, Richard Wiegand(T), Wendell Simmons(T)				
Ground Support Unit	Mark Bagley	<b>8. Finance/Administration Section:</b>			
Communications Unit	Mike Greene	Chief	Lisa Wilson		
Medical Unit	Brandon Bennewate(T)	Time Unit	Rebecca Lang(T)		
ITSS	Brett Davidson, Rocio Del Arroyo(T)	Cost Unit	David Dukart(V)		
Food Unit	Mike Kinne, Ed Jensen(T)	Comp/Claims Unit	Pearl Cowan(V)		
Ordering	Matt Berger, Collette Johnson	PTRC	Katie Fiely(T)(V)		
		EQTR	Mary Flanary(T)		
<b>Prepared By: Name:</b>	Greg White	<b>Position/Title:</b>	PSC(T)	<b>Signature:</b>	
<b>ICS 203</b>		<b>Date/Time:</b>	8/4/2021 2300 hours		



## Lick Creek / Green Ridge Weather Forecast



**FORECAST NO:** 25  
**FORECAST FOR:** Thursday Day and Night Shift  
**SHIFT DATE:** 8/5/2021  
**DATE AND TIME ISSUED:** 8/4/2021 at 2000 PDT

**NAME OF FIRE:** Lick Creek/Green Ridge  
**UNIT:** OR-UMF  
**SIGNED:** *Mary Wister* - Incident Meteorologist  
541-377-9905 (cell) / mary.wister@noaa.gov

---

**...Red Flag Warning in Effect 11 AM to 11 PM Thursday for Thunderstorms...  
...Storms may bring gusty and erratic winds...**

**WEATHER DISCUSSION:** A Pacific frontal system will bring showers to southeast Washington today and tonight, and thunderstorms are possible at ICP, Green Ridge, and Lick Creek. Rainfall amounts are not expected to be significant, although a few storms could bring brief heavy downpours. Outflow winds of 35 mph are possible. Precipitation will develop as early as 1000 PDT with periods of showers and embedded thunderstorms through the day and into the evening. Showers will end early Friday morning followed by increasing southwest winds that will continue through the weekend.

---

### **TODAY:**

**WEATHER:** Mostly cloudy. Showers likely with a chance of thunderstorms.  
**MAXIMUM TEMPERATURE:** 75-80° above 5000 feet. 88-93° valley bottoms.  
**MINIMUM RELATIVE HUMIDITY:** 38-43% above 5000 feet. 22-27% valley bottoms.  
**20-FOOT RIDGETOP WINDS:** Variable wind 3-5 mph becoming Northwest 4-8 mph with gusts to 12 mph.  
**GREEN RIDGE CREEKS:** Upslope/Upcanyon 3-8 mph.  
**CHANCE OF WETTING RAIN ( $\geq 0.10''$ ):** 50%. **RAINFALL AMOUNTS:** up to 0.2 with most showers.  
**LIGHTNING ACTIVITY LEVEL:** 2...possibly 3.  
**HAINES INDEX:** 4 (Low)  
**INVERSIONS/STABILITY:** Low level inversion breaking around 9 AM. Unstable.

---

### **TONIGHT:**

**WEATHER:** Mostly cloudy. Scattered showers and a chance of thunderstorms...mainly before midnight.  
**MINIMUM TEMPERATURE:** 65-70° above 5000 feet. 60-65° valley bottoms.  
**MAXIMUM RELATIVE HUMIDITY:** 68-73% above 5000 feet. 80-90% valley bottoms.  
**20-FOOT RIDGETOP WINDS:** South-Southwest 8-12 mph. Winds may gust to 17 mph in early morning.  
**GREEN RIDGE CREEKS:** Downslope/Down canyon 2-5 mph.  
**CHANCE OF WETTING RAIN ( $\geq 0.10''$ ):** 30% **RAINFALL AMOUNTS:** up to 0.1 with most showers.  
**LIGHTNING ACTIVITY LEVEL:** 2...possibly 3 in the evening.  
**HAINES INDEX:** 3 (Very Low)  
**INVERSIONS/STABILITY:** Low level inversion developing. Increasing stability early morning.

---

### **FRIDAY:**

**WEATHER:** Mostly cloudy. Cooler and Windy,  
**MAXIMUM TEMPERATURE:** 66-71° above 5000 feet. 75-80° valley bottoms.  
**MINIMUM RELATIVE HUMIDITY:** 55-60% above 5000 feet. 25-30% valley bottoms.  
**20-FOOT RIDGETOP WINDS:** Southwest 9-13 mph with gusts to 20 mph. Gusts 25 mph along exposed ridges.  
**GREEN RIDGE CREEKS:** Upslope/Upcanyon 3-8 mph. Southwest winds channeling along drainages in Lick Creek with gusts to 15 mph.  
**CHANCE OF WETTING RAIN ( $\geq 0.10''$ ):** 0%. **RAINFALL AMOUNTS:** up to 0.2 with most storms.  
**LIGHTNING ACTIVITY LEVEL:** 1.  
**HAINES INDEX:** 3 (Very Low)  
**INVERSIONS/STABILITY:** Stable. Strong mid-level inversion.

## FIRE BEHAVIOR FORECAST

<b>FORECAST NUMBER:</b> 10	<b>TYPE OF FIRE:</b> Vegetation
<b>FIRE NAME:</b> Lick Creek-Green Ridge Fires	<b>OPERATIONAL PERIOD:</b> Aug 5 <sup>th</sup> , 2021 24 HOUR
<b>DATE ISSUED:</b> August 4 <sup>th</sup> , 2021	<b>TIME ISSUED:</b> 1930
<b>UNIT:</b> WA-Umatilla National Forest	<b>SIGNED:</b> Dan O'Connor Fire Behavior Analyst (FBAN)

**WEATHER SUMMARY:** See detailed Fire Weather Forecast in IAP

### FUELS:

Fire areas include a range of conifer systems, from higher elevation Sub Alpine Fir and Engelmann Spruce, to Doug-Fir, Grand Fir and Lodgepole Pine under 5000', and Ponderosa Pine in the lower elevations of the Forest. Outside of the 2006 Columbia Complex and the 2015 Grizzly Complex, all forested areas have extensive dead and down and ladder fuels that will work together to elevate fire into the crowns and generate short range spotting.

The area is currently classified as 'Exceptional' drought by the US Drought Monitor, with Energy Release Components currently setting daily record highs, and approaching all time high levels. You may see some resistance to spread in brush and re-prod areas, but these veg structures are losing moisture daily. Heavy dead and down fuels will likely burn completely, holding heat and actively consuming through all hours of the day.

### EXPECTED FIRE BEHAVIOR: *Based on the Warmest, Driest, Windiest Conditions Forecasted*

<u>Maximum Spotting Distance</u> ¼ mile (1 mile plus outflows) <u>Probability of Ignition</u> 70%	Fuel Type/Model	Maximum Rate of Spread (chains/hour)	Maximum Flame Length (feet)
	Timber litter and understory TU5/TL4	Head 8-10 ch/hr Flank 3-5 ch/hr <b>Outflow 16-20 ch/hr</b>	Head 6-8 ft Flank 4-6 ft <b>Outflow 12-14 ft</b>
	Grass/Shrub GS1	Head 10-12 ch/hr Flank 4-6 ch/hr <b>Outflow 28 ch/hr</b>	Head 4-6 ft Flank 2-4 ft <b>Outflow 8-10 ft</b>

### GENERAL/Potential:

**DAY: Red Flag Warning for thunderstorms today.** Some moderation is possible if we see cloud cover and moisture, but relative humidity combined with afternoon winds will still be low enough to sustain fire growth. As the smoke clears out late morning anticipate an uptick in fire behavior in the heavies, which will elevate fire once again into the crowns to aid in spotting and perimeter growth. Thunderstorms in the area could bring strong, erratic winds especially where influenced by terrain.

### SPECIFIC

**Green Ridge:** Lots of great work with crews and the drone operators to get depth all along the 46 road in Division Gulf over the past few days. Keep in mind the Lick fire had spotting outside lines a couple weeks after the fire moved through, heavies are holding heat for extended times in the drought. Any reburning or interior islands that make runs could produce spots across lines. If working in Division Alpha, keep a good heads up for fire below your location as northwest winds have generated slope runs, especially on west aspects. Heads up again for any squirrely winds that could influence the backing fire on the south side of the Tucannon River in Division Mike.

**Lick Creek:** Low probability, high consequence spotting concerns remain along the western and southern flanks.

**Night Division:** Activity will slowly taper down from shift change across the active parts of the Green Ridge fire as the smoke settles and relative humidity recovers.

### AIR OPERATIONS:

Sunrise: 0535, Civil Twilight ends: 2053

### SAFETY:

Be especially heads up for outflow winds from thunderstorms in the vicinity that may create rapid fire growth.



# SAFETY MESSAGE



*Fire fighter safety comes first on every fire, every time*

We are **ALL** accountable for **SAFE** behaviors  
For Day & Night Operations: **8/5/21 0600 – 8/6/21 0600**

INCIDENT: **Lick Creek, Green Ridge**

Date Prepared: August 5, 2021

TIME: 1900

Safety Shop wants to thank you for your attention to detail when it comes to SAFETY. We have had a great safety record out on the fire line. Especially through this heat and while working in areas of steep ground. Way to go! We need more safety personnel like you on every fire.

*Major Hazards and Risks: Mop up and stump holes, hazard trees, steep rugged terrain and driving, public encroachment into the fire.*

## IT'S LIKE RIDING A BIKE

Strive to learn, understand and make adhering to the 10's, 18's and LCES as natural as riding a bike.



When you first rode a bike it took a bit to learn how to ride it. Once you learned how to ride that bike you had to improve your skills to be able to navigate through the HAZARD's, this is the same as learning your 10's, 18's and LCES. Once you learn them, you improve your understanding and their use to help NAVIGATE THE HAZARDS.

Be alert, Stay calm, Think clearly, Act decisively

You're doing a great job of **Fighting** this **Fire Aggressively**, and **Having Provided** for yours and others **Safety First!**



## Demob...before you hit the road... Check this out...

- Check the windshield, wipers, and wiper fluid level. Adjust mirrors.
- Keep windows, mirrors, and lights clean to better see and be seen.
- Check headlights, turn signals, tail lights, reflectors and running lights.
- Check front and back tires (including wheels and lug nuts).
- Under the hood, check all fluid levels and especially the air filter.
- Drivers to be rested up prior to driving.

**LIFE FIRST EVERYONE GOES HOME!**  
Do your part to insure you make it home.



Thanks, from your Safety Team!!

Safety Officers: *Mike Seymour SOF2 T, Mark Helm SOF2  
Shawn Shook SOFR, Ryan Grant SOFR*

# ASSIGNMENT LIST (ICS 204 WF)

CONTROLLED UNCLASSIFIED  
INFORMATION//MITTENS

<b>1. Incident Name:</b> <b>LICK CREEK/GREEN RIDGE</b>	<b>2. Operational Period:</b> Date From: 08/05/21    Date To: 08/06/21 Time From: 0600    Time To: 0600	<b>3. Branch</b> <b>Division</b> <b>GREEN RIDGE</b> <b>A</b> Page 1 of 2    Alpha
---	---	---

<b>4. Operations Personnel:</b> Operations Section Chief: <b>John Owings, Michael Page(T)</b> Branch Director: Division/Group Supervisor: <b>Nathan Leatherman</b>	Night Ops <b>Al Ward</b> Planning Ops <b>Jim Snow</b> Air Attack: <b>Kevin King</b>
---	---

5. Resources Assigned:	** Resources Below in Bold are 12 Hour **						
Resource Identifier	ALS	LWD	Leader	Personnel	Request #	Hours	Reporting Location
TFLD Setzer GR		<b>8/12</b>	<b>Setzer</b>	1	<b>O-289</b>	<b>0600-1800</b>	<b>Dayton ICP</b>
TFLD(T) Kramer GR		<b>8/12</b>	<b>Kramer</b>	1	<b>O-278</b>	<b>0600-1800</b>	<b>Dayton ICP</b>
HC2IA Prairie City GR		<b>8/11</b>	<b>Cearns</b>	22	<b>C-46</b>	<b>0600-1800</b>	<b>Dayton ICP</b>
HC2 Blue Mountain GR		<b>8/10</b>	<b>Perez</b>	20	<b>C-43</b>	<b>0600-1800</b>	<b>Dayton ICP</b>
HC2 MP Forestry EC		<b>8/9</b>	<b>Moreno</b>	20	<b>C-83</b>	<b>0600-1800</b>	<b>Dayton ICP</b>
ENG4 Alder Creek 1 GR		<b>8/13</b>	<b>Paz</b>	3	<b>E-150</b>	<b>0600-1800</b>	<b>Dayton ICP</b>
ENG4 Alder Creek 2 GR		<b>8/15</b>	<b>Stewart</b>	3	<b>E-164</b>	<b>0600-1800</b>	<b>Dayton ICP</b>
ENG5 West Coast 2 GR		<b>8/12</b>	<b>Miller</b>	3	<b>E-130</b>	<b>0600-1800</b>	<b>Dayton ICP</b>
ENG6 AZ E161 LC		<b>8/10</b>	<b>Jones</b>	3	<b>E-105</b>	<b>0600-1800</b>	<b>Dayton ICP</b>
ENG6 AZ E461 LC		<b>8/10</b>	<b>Teague</b>	3	<b>E-111</b>	<b>0600-1800</b>	<b>Dayton ICP</b>
ENG6 Rock Creek GR		<b>8/7</b>	<b>Mitchell</b>	3	<b>E-111</b>	<b>0600-1800</b>	<b>Dayton ICP</b>
WTS2 Del Shull DG		<b>8/7</b>	<b>Andrews</b>	1	<b>E-47</b>	<b>0600-1800</b>	<b>Dayton ICP</b>
WTS2 Lovato GR		<b>8/14</b>	<b>Lovato</b>	1	<b>E-135</b>	<b>0600-1800</b>	<b>Dayton ICP</b>
WTS2 Rahi GR		<b>8/12</b>	<b>Rahi</b>	1	<b>E-136</b>	<b>0600-1800</b>	<b>Dayton ICP</b>
WTS3 Northern LC		<b>8/9</b>	<b>Miller</b>	2	<b>E-64</b>	<b>0600-1800</b>	<b>Dayton ICP</b>
DOZ3 Pine Mountain GR		<b>8/13</b>	<b>Bruland</b>	1	<b>E-175</b>	<b>0600-1800</b>	<b>Dayton ICP</b>
CHIP Big Bark 1 GR		<b>8/6</b>	<b>Spencer</b>	3	<b>E-57</b>	<b>0600-1800</b>	<b>Dayton ICP</b>
CHIP Big Bark 2 GR		<b>8/6</b>	<b>Fromm</b>	3	<b>E-59</b>	<b>0600-1800</b>	<b>Dayton ICP</b>
CHIP Big Bark 4 GR		<b>8/6</b>	<b>Melton</b>	3	<b>E-62</b>	<b>0600-1800</b>	<b>Dayton ICP</b>

**6. Work Assignments:**  
Continue to improve line where needed from DIVS A/G break East to DIVS A/S break.  
Prep for firing operations and communicate with OPS before firing.  
Take action as needed to ensure that existing structures and infrastructures do not sustain further damage.  
Provide for structure protection to Little Turkey Tail Recreation Residence Area.

**7. Special Instructions:**  
Communicate with adjacent Divisions for holding resource needs.  
DIVS need to identify equipment to be sent in an event of an IA with TFR.  
Operations will consider and identify closest resources to respond to new incident.  
Please ensure 3/32" fish screens are used at all draft sites in Punjab Creek, Touchet, and Tucannon Rivers.  
Resources to return to Dayton ICP at end of shift.

**8. Communications**

Name	Ch	Function	Rx Freq	Rx Tone	Tx Freq	Tx Tone	Notes
SEE ICS 205 COMM PLAN							

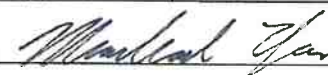
<b>9. Prepared by: Name:</b>	Josh Clark, Mike Yeun(T)	RESL	Signature:
ICS 204	Date/Time: 8/4/2021	2200	Personnel Count: 94





# ASSIGNMENT LIST (ICS 204 WF)

CONTROLLED UNCLASSIFIED  
INFORMATION//BASIC

<b>1. Incident Name:</b> <b>LICK CREEK/GREEN RIDGE</b>		<b>2. Operational Period:</b> Date From: 08/05/21    Date To: 08/06/21 Time From: 0600    Time To: 0600			<b>3. Branch</b> <b>Division</b> <b>GREEN RIDGE</b> <b>G</b> Page 1 of 1    Golf		
<b>4. Operations Personnel:</b>							
Operations Section Chief: <b>John Owings, Michael Page(T)</b> Branch Director:				Night Ops <b>Al Ward</b>			
Division/Group Supervisor: <b>Jason Flores</b>				Planning Ops <b>Jim Snow</b>			
				Air Attack: <b>Kevin King</b>			
<b>5. Resources Assigned:</b>		<b>** Resources Below in Bold are 12 Hour **</b>					
Resource Identifier	ALS	LWD	Leader	Personnel	Request #	Hours	Reporting Location
TFLD Jones GR		8/5	Jones	1	O-147	0600-1800	Dayton ICP
TFLD(T) Vickery GR		8/9	Vickery	1	O-223	0600-1800	Dayton ICP
<del>HC1 Lakeview IIC GR</del> (to K)		8/6	Blofsky	24	C-29	0600-1800	Dayton ICP
HC2 Mosqueda Ref GR		8/10	Equihua	20	C-45	0600-1800	Dayton ICP
ENG3 Buckskin GR		8/8	Weatherford	4	E-108	0600-1800	Dayton ICP
ENG4 Hi Country GR		8/12	Burnette	3	E-127	0600-1800	Dayton ICP
ENG4 Lone Wolf Wildfire GR		8/12	Flegel	3	E-129	0600-1800	Dayton ICP
WTT2 Christman Trucking GR		8/13	Blazek	1	E-2	0600-1800	Dayton ICP
WTT2 Overpeck GR		8/5	<del>Milton Melton</del>	1	E-3	0600-1800	Dayton ICP
WTS2 Panther DG		8/18	Davis	1	E-45	0600-1800	Dayton ICP
SOF2 Helm GR		8/7	Helm	1	O-217	0600-1800	Dayton ICP
RAT1 (DAY)		8/14	Howell	2	E-138	0600-1800	Dayton ICP
EMPF Fischer/Forsythe GR		8/7	Fischer/Forsythe	2	E-77	0600-1800	Dayton ICP
EMTF Holborn GR		8/17	Holborn	1	O-281	0600-1800	Dayton ICP
EMTF Merrell		8/18	Merrell	1	O-359	0600-1800	Dayton ICP
<b>Dozz Alpine (from RFR)</b>		<b>8/17</b>	<b>ISEIGS</b>	<b>1</b>	<b>E-93</b>		
<b>6. Work Assignments:</b>							
Continue to improve where needed on 46 Road North of Godman Staging to DP-220 DIVS G/K break.							
Patrol and mop up spot fire 100%.							
Conduct firing operations when conditions allow and communicate with Operations before firing.							
Prep for firing operations transition with Night Ops.							
<b>7. Special Instructions:</b>							
Communicate with adjacent Divisions for holding resource needs.							
DIVS need to identify equipment to be sent in an event of an IA with TFR.							
Operations will consider and identify closest resources to respond to new incident.							
Please ensure 3/32" fish screens are used at all draft sites in Punjab Creek, Touchet, and Tucannon Rivers.							
Resources to return to Dayton ICP at end of shift.							
<b>8. Communications</b>							
Name	Ch	Function	Rx Freq	Rx Tone	Tx Freq	Tx Tone	Notes
SEE ICS 205 COMM PLAN							
<b>9. Prepared by: Name:</b> Josh Clark, Mike Yeun(T)    RESL							
					Signature: 		
ICS 204	Date/Time: 8/4/2021		2200		Personnel Count: 66		

# ASSIGNMENT LIST (ICS 204 WF)

CONTROLLED UNCLASSIFIED  
INFORMATION//BASIC

<b>1. Incident Name:</b> <b>LICK CREEK/GREEN RIDGE</b>	<b>2. Operational Period:</b> Date From: 08/05/21    Date To: 08/06/21 Time From: 0600    Time To: 0600	<b>3. Branch</b> <b>Division</b> <b>GREEN RIDGE</b> <b>K/M</b> Page 1 of 2    Kilo/Mike
---	---	---

<b>4. Operations Personnel:</b> Operations Section Chief: <b>John Owings, Michael Page(T)</b> Branch Director: Division/Group Supervisor: <b>Kristian Litz, Daniel Kamakani(T)</b>	Night Ops <b>AI Ward</b> Planning Ops <b>Jim Snow</b> Air Attack: <b>Kevin King</b>
---	---

5. Resources Assigned:	** Resources Below in Bold are 12 Hour **							
Resource Identifier	ALS	LWD	Leader	Personnel	Request #	Hours	Reporting Location	
HC2 Umatilla LEND		8/5	Ellis	20	C-3	0600-1800	Wooten Camp	
HC Crew 406 LEND		8/6	Sebers	11		0600-1800	Wooten Camp	
ENG3 Taylor LC		8/8	Hatfield	4	E-93	0600-1800	Wooten Camp	
ENG3 BDF E314 GR		8/10	Finister	5	E-109	0600-1800	Wooten Camp	
ENG3 BDF E336 GR		8/10	Hernandez	5	E-114	0600-1800	Wooten Camp	
ENG4 Chewack LC		8/10	Reinbold	3	E-85	0600-1800	Wooten Camp	
ENG4 David Carroll GR		8/6	Garcia	3	E-113	0600-1800	Wooten Camp	
ENG5 Ya Boy GR		8/11	Bower	3	E-155	0600-1800	Wooten Camp	
WTS2 Northern LC		8/9	Martin	1	E-82	0600-1800	Wooten Camp	
WTS2 Alder Creek Fire GR		8/14	Beaman	1	E-169	0600-1800	Wooten Camp	
WTS2 Able 2 GR		8/14	Smith	1	E-174	0600-1800	Wooten Camp	
CHIP Big Bark 3 GR		8/6	Palmer	3	E-60	0600-1800	Wooten Camp	
MAST Bruce Young GR		8/16	Nicol	2	E-69	0600-1800	Wooten Camp	
MAST Eagle CAP GR		8/15	Pierce	2	E-70	0600-1800	Wooten Camp	
MAST Hayden 2 GR		8/9	Hayden	2	E-72	0600-1800	Wooten Camp	
SOFR Shook LC		8/8	Shook	1	O-257	0600-1800	Wooten Camp	
<del>HC2 Lakeview (from G-)</del>								

**6. Work Assignments:**  
Construct direct and indirect handline utilizing ridges and natural barriers from Lady Bug Campground South.  
Road prep along 4712 Road from DP-261 to the Tucannon Trail DP-300.

**7. Special Instructions:**  
Communicate with adjacent Divisions for holding resource needs.  
DIVS need to identify equipment to be sent in an event of an IA with TFR. Ops will identify closest resources to respond to new incident.  
Wooten Camp to provide DIVS K/M resources with meals, showers, and sleeping area. Maintain crew spacing.  
Please ensure 3/32" fish screens are used at all draft sites in Punjab Creek, Touchet, and Tucannon Rivers.  
Operational briefing to be broadcasted at Wooten Camp at 0600. See IAP for details.

**8. Communications**

Name	Ch	Function	Rx Freq	Rx Tone	Tx Freq	Tx Tone	Notes
SEE ICS 205 COMM PLAN							

<b>9. Prepared by: Name:</b>	Josh Clark, Mike Yeun(T)	RESL	Signature:
ICS 204	Date/Time: 8/4/2021	2200	Personnel Count: 67





# ASSIGNMENT LIST (ICS 204 WF)

CONTROLLED UNCLASSIFIED  
INFORMATION//BASIC

<b>1. Incident Name:</b> <b>LICK CREEK/GREEN RIDGE</b>	<b>2. Operational Period:</b> Date From: 08/05/21    Date To: 08/06/21 Time From: 0600            Time To: 0600	<b>3. Branch</b> <b>Division</b> <b>GREEN</b> <b>NIGHT</b> <b>RIDGE</b>
<b>4. Operations Personnel:</b>		Page 1 of 1

Operations Section Chief: <b>John Owings, Michael Page(T)</b> Branch Director: Division/Group Supervisor: <b>Jeff Corser(T)</b>	Night Ops: <b>Al Ward</b> Planning Ops <b>Jim Snow</b> Air Attack: <b>Kevin King</b>
---	--

5. Resources Assigned:	** Resources Below in Bold are 12 Hour **							
Resource Identifier	ALS	LWD	Leader	Personnel	Request #	Hours	Reporting Location	
ENG4 Inbound E18 GR		8/14	<b>Navarro</b>	3	E-161	1800-0600	Dayton ICP	
ENG4 Utting Const GR		8/14	<b>Bailey</b>	3	E-165	1800-0600	Dayton ICP	
ENG4 GE Forestry GR		8/14	<b>Aguilar</b>	3	E-166	1800-0600	Dayton ICP	
ENG5 Iron Triangle GR		8/12	<b>Carter</b>	3	E-163	1800-0600	Dayton ICP	
ENG5 Methow River GR		8/14	<b>Hernandez</b>	3	E-159	1800-0600	Dayton ICP	
ENG6 Eye of the Eagle GR		8/13	<b>Gillian</b>	2	E-147	1800-0600	Dayton ICP	
ENG6 ONF E619 GR		8/13	<b>Bell</b>	3	E-148	1800-0600	Dayton ICP	
ENG6 Osprey Wildfire GR		8/12	<b>Roe</b>	3	E-149	1800-0600	Dayton ICP	
ENG6 Timberrmans Inbound GR		8/13	<b>Thompson</b>	3	E-151	1800-0600	Dayton ICP	
ENG6 Fountain Fire GR		8/9	<b>Orta</b>	3	E-153	1800-0600	Dayton ICP	
ENG6 Fort Pierre E58 GR		8/8	<b>Odden</b>	3	E-158	1800-0600	Dayton ICP	
WTS2 Dahl-Bredine GR		8/13	<b>Dahl-Bredine</b>	1	E-133	1800-0600	Dayton ICP	
WTS2 Black Range GR		8/14	<b>Sallee</b>	1	E-134	1800-0600	Dayton ICP	
DOZ3 Mortimore 1 GR		8/13	<b>Mortimore</b>	2	E-176	1800-0600	Dayton ICP	
DOZ3 Mortimore 2 GR		8/13	<b>Jaeger</b>	2	E-180	1800-0600	Dayton ICP	
Ambulance 4 DG		8/8	<b>Day/Dulin</b>	2	E-61	1800-0600	Dayton ICP	
Ambulance 7 GR		8/17	<b>Bigelow/Carroll</b>	2	E-206	1800-0600	Dayton ICP	

**6. Work Assignments:**  
 Patrol and improve line where needed.  
 Prep for firing operations transition from night to day operations.  
 Take action as needed to ensure that existing structures and infrastructures do not sustain further damage.  
 Provide for structure protection to Little Turkey Tail Recreation Residence Area.

**7. Special Instructions:**  
 Communicate with Operations on scouting needs.  
 Please make sure 3/32" fish screens are used at all draft sites in Punjab Creek, Touchet, and Tucannon Rivers.  
 Resources to return to Dayton ICP at end of shift.

Name	Ch	Function	Rx Freq	Rx Tone	Tx Freq	Tx Tone	Notes
SEE ICS 205 COMM PLAN							

<b>9. Prepared by: Name:</b>	Josh Clark, Mike Yeun(T)	RESL	Signature:
<b>ICS 204</b>	Date/Time: 8/4/2021	2200	Personnel Count: 42

# ASSIGNMENT LIST (ICS 204 WF)

CONTROLLED UNCLASSIFIED  
INFORMATION//BASIC

<b>1. Incident Name:</b> <b>LICK CREEK/GREEN RIDGE</b>	<b>2. Operational Period:</b> Date From: 08/05/21    Date To: 08/06/21 Time From: 0600    Time To: 0600	<b>3. Branch</b> <b>Division</b> <b>LICK</b> <b>D/H/T/W</b>
---	---	--

<b>4. Operations Personnel:</b>		Page 1 of 1
Operations Section Chief: <b>John Owings, Michael Page(T)</b> Branch Director: <b>Robert Szczepanek</b> Division/Group Supervisor: <b>Neal McCann(T)</b>	Night Ops: <b>Al Ward</b> Planning Ops: <b>Jim Snow</b> Air Attack: <b>Austin McDonald(T)</b>	

5. Resources Assigned:	** Resources Below in Bold are 12 Hour **							
Resource Identifier	ALS	LWD	Leader	Personnel	Request #	Hours	Reporting Location	
STEN Cwiak GR		8/14	<b>Cwiak</b>	1	O-300	0600-1800	Wooten Camp	
TFLD(T) Walters GR		8/16	<b>Walters</b>	1	O-329	0600-1800	Wooten Camp	
ENG3 SNF E313 GR		8/9	<b>Holland</b>	5	E-157	0600-1800	Wooten Camp	
ENG4 Rattlesnake DG		8/6	<b>Worford</b>	3	E-26	0600-1800	Wooten Camp	
ENG4 Fire Control DG		8/8	<b>Fuchs</b>	3	E-51	0600-1800	Wooten Camp	
ENG4 Flashback Fire GR		8/12	<b>Ribich</b>	3	E-131	0600-1800	Wooten Camp	
ENG4 JD Forestry GR		8/5	<b>Lopez</b>	3	E-156	0600-1800	Wooten Camp	
ENG4 Thunderbold GR		8/13	<b>Grant</b>	3	E-160	0600-1800	Wooten Camp	
ENG6 Peoples Valley GR		8/8	<b>Hernandez</b>	3	E-110	0600-1800	Wooten Camp	
ENG6 Late Summers 1 GR		8/13	<b>Baker</b>	3	E-152	0600-1800	Wooten Camp	
WTS2 Ash Kickers DG		8/14	<b>Puckett</b>	1	E-15	0600-1800	Wooten Camp	
WTS2 Minam River DG		8/5	<b>Henderson</b>	1	E-40	0600-1800	Wooten Camp	
WTT2 Swanson DG/DNR*		8/8	<b>Wilson</b>	1	E-78	0600-1800	Wooten Camp	
DOZ3 Traverse GR		8/13	<b>Wilcox</b>	2	E-177	0600-1800	Wooten Camp	
DOZ3 Swanson Log DG/DNR*		8/8	<b>Smith</b>	2	E-69	0600-1800	Wooten Camp	
THSP Davis LC		8/8	<b>Davis</b>	1	O-278	0600-1800	Wooten Camp	
Ambulance 6 LC		8/5	<b>Gomes/Hicks</b>	2	E-39	0600-1800	Wooten Camp	
EMTF Jonassen GR		8/9	<b>Jonassen</b>	1	O-196	0600-1800	Wooten Camp	

**6. Work Assignments:**  
 Patrol and Mop-up as needed to secure fire's edge.  
 Take action on spot fires where safe.

**7. Special Instructions:**  
 Please backhaul trash and assist in repairing any fences that are cut.  
 DIVS need to identify equipment to be sent in an event of an IA with TFR. Ops will identify closest resources to respond to new incident.  
 Wooten Camp to provide Lick Branch resources with meals, showers, and sleeping area. Maintain crew spacing.  
 Please make sure 3/32" fish screens are used at all draft sites in Punjab Creek, Touchet, and Tucannon Rivers.  
 Operational briefing to be broadcasted at Wooten Camp at 0600. See IAP for details.

Name	Ch	Function	Rx Freq	Rx Tone	Tx Freq	Tx Tone	Notes
SEE ICS 205 COMM PLAN							

**9. Prepared by: Name:** Josh Clark, Mike Yeun(T)    RESL    Signature: *Michael Page*

ICS 204    Date/Time: 8/4/2021 2200    Personnel Count: 39

# ASSIGNMENT LIST (ICS 204 WF)

CONTROLLED UNCLASSIFIED  
INFORMATION/BASIC

<b>1. Incident Name:</b> <b>LICK CREEK/GREEN RIDGE</b>	<b>2. Operational Period:</b> Date From: 08/05/21    Date To: 08/06/21 Time From: 0600            Time To: 0600	<b>3. Branch</b> <b>Division</b> <b>CONTINGENCY</b> <b>NORTH</b>
---	---	---

<b>4. Operations Personnel:</b>		Page 1 of 1
Operations Section Chief: <b>John Owings, Michael Page(T)</b> Branch Director: <b>Greg Overacker</b> Division/Group Supervisor: <b>Andy Juarez</b>	Night Ops: <b>Al Ward</b> Planning Ops <b>Jim Snow</b> Air Attack: <b>Kevin King</b>	

5. Resources Assigned:		** Resources Below in Bold are 12 Hour **					
Resource Identifier	ALS	LWD	Leader	Personnel	Request #	Hours	Reporting Location
TFLD(T) Lennox GR		8/9	<b>Lennox</b>	1	<b>O-224</b>	0600-1800	<b>Wooten Camp</b>
WTS2 MVP Team DG		8/16	<b>Konrad</b>	1	<b>E-48</b>	0600-1800	<b>Wooten Camp</b>
WTS2 Green Mountain GR		8/17	<b>Stevens</b>	1	<b>E-168</b>	0600-1800	<b>Wooten Camp</b>
WTS2 Hek Jones GR		8/14	<b>Long</b>	1	<b>E-171</b>	0600-1800	<b>Wooten Camp</b>
DOZ2 Overpeck GR		8/18	<b>Overpeck</b>	2	<b>E-4</b>	0600-1800	<b>Wooten Camp</b>
DOZ3 Bruce Young GR		8/15	<b>Johnson</b>	2	<b>E-85</b>	0600-1800	<b>Wooten Camp</b>
EXCA Henderson Log 2 DG/DNR*		8/6	<b>West</b>	1	<b>E-87</b>	0600-1800	<b>Wooten Camp</b>
FEL2 Henderson Log 1 DG/DNR*		8/8	<b>Lewis</b>	1	<b>E-85</b>	0600-1800	<b>Wooten Camp</b>
SOFR Foco		8/18	<b>Foco</b>	1	<b>O-368</b>	0600-1800	<b>Wooten Camp</b>
READ Clark GR		8/14	<b>Clark</b>	1	<b>O-259</b>	0600-1800	<b>Wooten Camp</b>
READ (T) Allen GR		8/16	<b>Allen</b>	1	<b>O-379</b>	0600-1800	<b>Wooten Camp</b>

**6. Work Assignments:**  
 Continue to gather intel on structures north of the fire.  
 Improve any contingency lines where needed.

**7. Special Instructions:**  
 Communicate with adjacent Divisions for holding resource needs.  
 DIVS need to identify equipment to be sent in an event of an IA with TFR. Ops will identify closest resources to respond to new incident.  
 Wooten Camp to provide Contingency North resources with meals, showers, and sleeping area. Maintain crew spacing.  
 Please make sure 3/32" fish screens are used at all draft sites in Punjab Creek, Touchet, and Tucannon Rivers.  
 Operational briefing to be broadcasted at Wooten Camp at 0600. See IAP for details.

**8. Communications**

Name	Ch	Function	Rx Freq	Rx Tone	Tx Freq	Tx Tone	Notes
SEE ICS 205 COMM PLAN							

<b>9. Prepared by: Name:</b>	Josh Clark, Mike Yeun(T)	RESL	Signature:
<b>ICS 204</b>	Date/Time: 8/4/2021	2200	Personnel Count: 13



# ASSIGNMENT LIST (ICS 204 WF)

CONTROLLED UNCLASSIFIED  
INFORMATION//BASIC

<b>1. Incident Name:</b> <b>LICK CREEK/GREEN RIDGE</b>	<b>2. Operational Period:</b> Date From: 08/05/21    Date To: 08/06/21 Time From: 0600    Time To: 0600	<b>3. Branch</b> <b>Division</b> <b>CONTINGENCY</b> <b>SOUTH</b>
<b>4. Operations Personnel:</b>		Page 1 of 1

Operations Section Chief: <b>John Owings, Michael Page(T)</b> Branch Director: <b>Greg Overacker</b> Division/Group Supervisor: <b>Andy Wordin(T)</b>	Night Ops: <b>Al Ward</b> Planning Ops <b>Jim Snow</b> Air Attack: <b>Kevin King</b>
---	--

5. Resources Assigned:	** Resources Below in Bold are 12 Hour **							
Resource Identifier	ALS	LWD	Leader	Personnel	Request #	Hours	Reporting Location	
ENG6 Flashover GR		8/13	<b>Gilmore</b>	2	<b>E-162</b>	<b>0600-1800</b>	<b>Dayton ICP</b>	
WTS2 Huffman GR		8/20	<b>Huffman</b>	1	<b>E-167</b>	<b>0600-1800</b>	<b>Dayton ICP</b>	
WTS2 Martin GR		8/15	<b>Martin</b>	1	<b>E-173</b>	<b>0600-1800</b>	<b>Dayton ICP</b>	
DOZ3 Kiser & Kiser 1 GR		8/15	<b>Kiser</b>	1	<b>E-178</b>	<b>0600-1800</b>	<b>Dayton ICP</b>	
DOZ3 Kiser & Kiser 2 GR		8/15	<b>Mackay</b>	1	<b>E-179</b>	<b>0600-1800</b>	<b>Dayton ICP</b>	
MAST Eagle CAP LC		8/8	<b>Peterson</b>	2	<b>E-57</b>	<b>0600-1800</b>	<b>Dayton ICP</b>	
MAST Tucannon Outfitters GR		8/7	<b>Martin</b>	1	<b>E-107</b>	<b>0600-1800</b>	<b>Dayton ICP</b>	
GRD Alvord GR		8/13	<b>Davis</b>	2	<b>E-132</b>	<b>0600-1800</b>	<b>Dayton ICP</b>	
FEL1 Bruce Young GR		8/22	<b>McCleran</b>	2	<b>E-79</b>	<b>0600-1800</b>	<b>Dayton ICP</b>	
FEL2 Wyeast GR		8/7	<b>Sandoz</b>	2	<b>E-102</b>	<b>0600-1800</b>	<b>Dayton ICP</b>	
READ Caire		8/11	<b>Caire</b>	1	<b>O-261</b>	<b>0600-1800</b>	<b>Dayton ICP</b>	

**6. Work Assignments:**  
 Continue to gather intel on structures south of the fire.  
 Improve any contingency lines where needed.

**7. Special Instructions:**  
 Communicate with adjacent Divisions for holding resource needs.  
 Check with Operations before moving personnel and equipment into Wilderness.  
 DIVS need to identify equipment to be sent in an event of an IA with TFR. Ops will identify closest resources to respond to new incident.  
 Communicate with Operations on scouting needs.  
 Please make sure 3/32" fish screens are used at all draft sites in Punjab Creek, Touchet, and Tucannon Rivers.  
 Resources to return to Dayton ICP at end of shift.

**8. Communications**

Name	Ch	Function	Rx Freq	Rx Tone	Tx Freq	Tx Tone	Notes
SEE ICS 205 COMM PLAN							

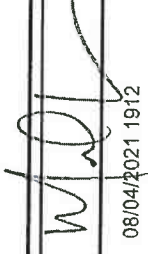
**9. Prepared by: Name:** Josh Clark, Mike Yeun(T)    RESL

Signature:

ICS 204    Date/Time: 8/4/2021    2200    Personnel Count: 16

# INCIDENT RADIO COMMUNICATIONS PLAN (ICS 205)

Controlled Unclassified Information//Basic

1. Incident Name: <b>LICK CREEK</b>		2. Date/Time Prepared: Date: 08/04/2021 Time: 1912		3. Operational Period: 8/05/21 0600- 8/06/21 0600		Date/Time To: 08/06/2021 0600	FRI			
4. Basic Radio Channel Use:										
Zone Group	Ch #	Function	Channel Name/Trunked Radio System Talkgroup	Assignment	RX Freq	RX Tone/NAC	TX Freq	TX Tone/NAC	Mode (A, D, or M)	Remarks
LICK CREEK	1	COMMAND	CMD 1	OUT OF SERVICE					A	Removed from Service. Unavailable for use.
LICK CREEK	2	COMMAND	CMD 2	COMMAND	170.4125N	131.8	165.9625N	131.8	A	ON PINKHAM BUTTE LINKED Green Ridge
LICK CREEK	3	COMMAND	CMD 3	COMMAND	170.0250N	131.8	165.4500N	131.8	A	CLEARWATER LOOKOUT Linked to Green Ridge
LICK CREEK	4	COMMAND	CMD 4	OUT OF SERVICE					A	
LICK CREEK	5	TACTICAL	TAC 5	LICK BRANCH	168.0500N	131.8	168.0500N	131.8	A	
LICK CREEK	6	TACTICAL	TAC 6	UNASSIGNED	168.6000N	131.8	168.6000N	131.8	A	
LICK CREEK	7	TACTICAL	TAC 7	UNASSIGNED	166.7250N	131.8	166.7250N	131.8	A	
LICK CREEK	8	TACTICAL	TAC 8	UNASSIGNED	166.7750N	131.8	166.7750N	131.8	A	
LICK CREEK	9	TACTICAL	TAC 9	UNASSIGNED	168.2500N	131.8	168.2500N	131.8	A	
LICK CREEK	10	TACTICAL	TAC 10	UNASSIGNED	168.2000N	131.8	168.2000N	131.8	A	
LICK CREEK	11	COMMAND	CMD 11	COMMAND	169.4500N	131.8	172.5500N	131.8	A	LOCATED NEAR DP57
LICK CREEK	12	COMMAND	COTTWD	LOCAL RPTR	173.7750N	131.8	164.8250N	127.3	A	LOCATED 18 M SE OF POMEROY
LICK CREEK	13	AIR TO GROUND	VMED28	MED A / G	155.3400N		155.3400N		A	USE WITH AIR AMBULANCE
LICK CREEK	14	AIR TO GROUND	AVG PRI	A / G	169.2000N		169.2000N		A	
LICK CREEK	15	AIR TO GROUND		UNAVAILABLE					A	REASSIGNED TO GREEN RIDGE FIRE.
LICK CREEK	16	AIR GUARD	AIRGUARD	AIR GUARD	168.6250N		168.6250N	110.9	A	Emergency Aircraft Contact
5. Special Instructions:										
6. Prepared By (Communications Unit Leader)				Name: MIKE GREENE		Signature: 		Date/Time: 08/04/2021 1912		
ICS 205								IAP Page		

# INCIDENT RADIO COMMUNICATIONS PLAN (ICS 205)

Controlled Unclassified Information//Basic

**1. Incident Name:** GREEN RIDGE

**2. Date/Time Prepared:** 08/04/2021 1912

**3. Operational Period:** 8/05/21 0600- 8/06/21 0600

**Date/Time From:** 08/05/2021 0600 **THU**


**Date/Time To:** 08/06/2021 0600 **FRI**

**4. Basic Radio Channel Use:**

Zone Group	Ch #	Function	Channel Name/Trunked Radio System Talkgroup	Assignment	RX Freq	RX Tone/NAC	TX Freq	TX Tone/NAC	Mode (A, D, or M)	Remarks
GREENRI DGE	1	TACTICAL	BRII TAC 1	DIV K / M	168.0500N	151.4	168.0500N	151.4	A	
GREENRI DGE	2	TACTICAL	BRII TAC 2	DIV A	168.6000N	151.4	168.6000N	151.4	A	
GREENRI DGE	3	TACTICAL	BRII TAC 3	CONTINGENCY	166.7250N	151.4	166.7250N	151.4	A	
GREENRI DGE	4	TACTICAL	BRII TAC 4	DIV G	166.7750N	151.4	166.7750N	151.4	A	
GREENRI DGE	5	TACTICAL	BRII TAC 5	UNASSIGNED	168.2500N	151.4	168.2500N	151.4	A	
GREENRI DGE	6	TACTICAL	BRII TAC 6	DIV NIGHT	168.2000N	151.4	168.2000N	151.4	A	
GREENRI DGE	7	COMMAND	BRII CMD 7	COMMAND	170.0000N	151.4	166.6750N	151.4	A	LITTLE TURKEY TAIL LINKED TO CMD 8 & 9
GREENRI DGE	8	COMMAND	BRII CMD 8	COMMAND	170.6875N	151.4	166.5750N	151.4	A	TALLOW FLATS LINKED TO CMD 7 & 9
GREENRI DGE	9	COMMAND	BRII CMD 9	COMMAND	170.4250N	151.4	168.0750N	151.4	A	CHASE MTN LINKED TO CMD 7 & 8
GREENRI DGE	10	COMMAND	BRII CMD 10	COMMAND	172.0250N	151.4	162.1750N	151.4	A	HOPKINS RIDGE LINK 7, 8, & 9
GREENRI DGE	11	COMMAND	ICP LINK	COMMAND	172.0750N	151.4	162.2000N	151.4	A	LINK ICP USE ONLY
GREENRI DGE	12	AIR TO GROUND	VMED 28	MEDICAL A/G	155.3400N		155.3400N		A	A/G USE WITH AIR AMBULANCE
GREENRI DGE	13	AIR TO GROUND	A/G LOGISTICS		167.0750N		167.0750N		A	SLING LOADS AND TROOP SHUTTLES
GREENRI DGE	14	AIR TO GROUND	A/G PRIMARY		168.2750N		168.2750N		A	
GREENRI DGE	15	AIR TO GROUND	A/G SECONDARY		168.5250N		168.5250N		A	
GREENRI DGE	16	AIR GUARD	AIR GUARD		168.6250N		168.6250N	110.9	A	USE FOR AIRCRAFT EMERGENCY CONTACT

**5. Special Instructions:**


**6. Prepared By:** (Communications Unit Leader) Name: MIKE GREENE

Signature: 

**ICS 205** IAP Page Date/Time: 08/04/2021 1912

# INCIDENT RADIO COMMUNICATIONS PLAN (ICS 205)

Controlled Unclassified Information//Basic

<b>1. Incident Name:</b> GREEN RIDGE / LICK CREEK IA'S		<b>2. Date/Time Prepared:</b> Date: 08/04/2021 Time: 1912		<b>3. Operational Period:</b> 8/05/21 0600- 8/06/21 0600		Date/Time To: 08/06/2021 0600	FRI			
<b>4. Basic Radio Channel Use:</b>										
Zone Group	Ch #	Function	Channel Name/Trunked Radio System Talkgroup	Assignment	RX Freq	RX Tone/NAC	TX Freq	TX Tone/NAC	Mode (A, D, or M)	Remarks
IA	1	COMMAND	ST ASOTIN	LOCAL RPTR	159.4200N	D365	151.2950N	D365	A	6 MILES W OF ANATONE
IA	2	COMMAND	COTTNWD	LOCAL RPTR	173.7750N	131.8	164.8250N	127.3	A	18 MILES SE OF POMEROY
IA	3	COMMAND	SADDLE	LOCAL RPTR	173.7750N	131.8	164.8250N	146.2	A	29 MILES SE OF POMEROY
IA	4	COMMAND	OREGON	LOCAL RPTR	173.7750N	131.8	164.8250N	167.9	A	25 MILES S OF POMEROY
IA	5	COMMAND	DIAMOND	LOCAL RPTR	173.7750N	131.8	164.8250N	151.4	A	
IA	6	TACTICAL	DNR COM	TACTICAL	151.4150N	103.5	151.4150N	103.5	A	
IA	7	TACTICAL	DNR TAC1	TACTICAL	151.3100N	103.5	151.3100N	103.5	A	
IA	8	TACTICAL	DNR TAC2	TACTICAL	151.3400N	103.5	151.3400N	103.5	A	
IA	9	TACTICAL	DNR TAC3	TACTICAL	151.3500N	103.5	151.3500N	103.5	A	
IA	10	TACTICAL	REDNET	TACTICAL	153.8300N		153.8300N		A	
IA	11	TACTICAL	UMF-TAC	TACTICAL	168.2375N	131.8	168.2375N	131.8	A	
IA	12	AIR TO GROUND	DNR A/G 1	LOCAL A/G	159.2700N	103.5	159.2700N	103.5	A	
IA	13	AIR TO GROUND	A/G 9	LOCAL A/G	166.9125N		166.9125N		A	
IA	14	AIR TO GROUND	A/G 44	LOCAL A/G	167.6250N		167.6250N		A	
IA	15	AIR TO GROUND	VMED28	MEDICAL A/G	155.3400N		155.3400N		A	
IA	16	AIR GUARD	AIR GUARD	AIR GUARD	168.6250N		168.6250N		A	Emergency Aircraft Contact
<b>5. Special Instructions:</b>										
<b>6. Prepared By</b> (Communications Unit Leader)				Name: MIKE GREENE		Signature: 		Date/Time: 08/04/2021 1912		
ICS 205				IAP Page		Controlled Unclassified Information//Basic				

<b>AIR OPERATIONS SUMMARY 220</b>		Prepared By: JoAnn Overacker	Prepared: 08/04/2021	Prepared Time: 1900 hrs.
<b>1. INCIDENT NAME: LICK CREEK/GREEN RIDGE</b>		<b>2. OPERATIONAL PERIOD</b> 08/05/2021	<b>START TIME:</b> 0730	<b>END TIME:</b> 2130
			<b>SUNRISE:</b> 0	<b>SUNSET:</b> 2022

**3. REMARKS** (Safety Notes, Hazards, Air Operations Special Equipment, etc.).  
 PUBLIC.  
 Relief Air Attack to be requested through dispatch.  
 \*\*If 353RJ is needed for aerial ignition, the PSD trailer and fuel truck will be relocated to H-25 for the day.  
 For IA within the TFR, use A/G Branch 2 Primary.  
 \*\*\* Monitor adverse weather, have a plan in place if aircraft cannot fly \*\*\*

**4. MEDICAL RESPONSE AIRCRAFT:**

- 1) Lifeflight: 911
- 2) Shorthaul: Walla Walla H-353JR (As-350B3)
- 3) Shorthaul: McCall AS-350B3

\* Follow Medical Plan ICS-206 \*

**5. TFR:**

Lick Creek 1/2359  
119.5250  
Elbow Creek 1/1754  
134.575  
Helibase:  
Walla Walla Regional Airport (ALW)  
N46°05.552 x W118°17.045

6. PERSONNEL	NAME	PHONE #	7. FREQUENCIES	AM	FM	8. FIXED-WING Avail/ Type/ Make-Model/ N#/ Base
ASGST	JoAnn Overacker	209-559-1617	A/A Primary TFR	119.5250		ATGS Platforms: AA N400DS  Helibase email <a href="mailto:lickcreekhelibase@gmail.com">lickcreekhelibase@gmail.com</a>
ATGS (ODS)	Tim Haas	307-388-9997	A/A Secondary A/G Branch 1 Primary	123.7000	169.2000	
HEBM Walla Walla	Lee Steward	775-220-6364	A/G Branch 2 Logistics		167.0750	
HEBMT Walla Walla	Austin McDonald	541-910-0584	A/G Branch 2 Primary		168.2750	
Unmanned Romeo 322	Tim Gibilisco Milton Trwong	541-591-6000 916-716-4708	A/G Branch 2 Secondary		168.5250	
Mobile Retardant Base	Daniel Wheeler	775-962-1311	AIRGUARD		168.6250 RX/TX 110.9	
Blue Mountain Disp.	Aircraft Desk	541-963-7171	V MED 28		155.3400	

**9. HELICOPTERS (Use Additional Sheets as Necessary)**

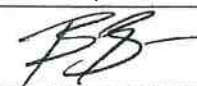

FAA N#	TY	MAKE/ MODEL	BASE	START	AVAIL	REMARKS	FAA N#	TY	MAKE/ MODEL	BASE	START	AVAIL	REMARKS
187CH	1	Vertol CH-46	ALW	0830	0900	Bucket	359EV	3	AS-350B3	ALW	0830	0900	Recon, Bucket, PAX, Cargo
12CK	1	Sikorsky SH-3H	ALW	0830	0900	Bucket	353JR	3	AS-350B3	ALW	0830	0900	Recon, Bucket, PSD, PAX, Cargo
625CK	1	S-61N	ALW	0830	0900	Bucket	Unmanned Romeo 322	UAS	DJI M600	Lakeview IHC			
604CK	1	UH-60	ALW	0830	0900	Bucket							

10. TASK/MISSION/ ASSIGNMENT (Type/ function includes: Air Tactical, Retardant, Recon, Personnel Transport, Bucket Operations, SAR, etc.)					
TYPE/FUNCTION	PRIORITY	NAME OF PERSONNEL OR CARGO (If applicable) or instructions for tactical aircraft	MISSION START	FLY FROM	FLY TO
ATGS		AOBD will order ATGS through Dispatch.	0900	LWS	Fire
Water Drops		As needed and approved by OPS or Division, order through ATGS	0900	ALW	Fire
Recon		As needed		ALW	Fire
Mapping		As needed and approved by AOBD, order through Helibase	0900	ALW	Fire
PSD	1	Firing in Divisions M/K, A and G	0900	ALW	Fire
Initial Attack		Support Initial Attack inside as requested.	0900	ALW	Fire
Mobile Retardant Base		Support Line Operations	0900	Ski Area	
Cargo	2	Resupply crew at H-55 as need		H-26	H-55

Helibase, Dip Sites, Pick Up Sites, etc.	Equipment/Resources
See Pilots Map	S-124 Mobil Retardant Base – Green Ridge Fire @ Ski Area E-81 T-2 Tender Mobile Retardant – Green Ridge Fire @ Ski Area E-73 T-2 Tender Mobile Retardant – Green Ridge Fire @ Ski Area E-49 T-2 Tender Mobile Retardant – Green Ridge Fire @ Ski Area E-41 T-2 Tender Mobile Retardant – Green Ridge Fire @ Ski Area E-91 T-2 Tender Helibase – Green Ridge @ Walla Walla Helibase E-20 Helibase Trailer S-152 Walla Walla Helibase LUA S-295 Blue Wood Ski Area MRB LUA S-311 Fish Hatchery Helispot / Parking LUA S-# ARFF Walla Walla

Flights above ground level	Wind Restrictions	
	Type 1 Helicopters	Flight Permitted in Winds Less than / Maximum Gust Spread
More than 500' AGL	<50kts / Gusts: N/A	Type 2 Helicopters <50kts / Gusts: N/A
Less than 500' AGL	<40kts / Max Gust Spread: 15kts	Type 3 Helicopters <50kts / Gusts: N/A
		<30kts / Max Gust Spread: 15kts

## MEDICAL PLAN (ICS 206 WF) CIIMT 12

1. Incident Name				2. Operational Period			
<b>LICK CREEK/GREEN RIDGE INCIDENT</b>				Date/Time: <b>08/05/2021 (0600) – 08/06/2021 (1800)</b>			
3. EMS / Ambulance Services/Aid Stations							
Name	Location	Frequency/Phone	Advanced Life Support (ALS)				
			Yes	No			
MEDICAL UNIT	ICP	COMMAND		X			
Asotin County Fire District #1	2314 Appleside Blvd. Clarkston, WA	Dial 9-1-1		X			
Columbia FD #3	111 Patit Road Dayton, WA	Dial 9-1-1		X			
Lewiston Fire Department	1245 Idaho St. Lewiston, ID	Dial 9-1-1	X				
4. Air Rescue / Air Ambulance Services							
Name	Phone	Type of Aircraft & Capability					
Lifeflight - Lewiston	Call 9-1-1 1-800-232-0911	Helicopter – NO HOIST CAPABILITIES					
Lifeflight – Walla Walla	Call 9-1-1 1-800-232-0911	Helicopter – NO HOIST CAPABILITIES					
Short Haul – McCall / Walla Walla	Contact Air Ops	Helicopter – Short Haul Capable					
5. Hospitals (all times estimated from incident location)							
Name & Level	GPS Datum – WGS 84 Degrees Decimal Minutes	Travel Time		Phone	Helipad		Address
		Air	Gnd		Yes	No	
St. Joseph Regional Level II Cardiac Level II CVA Level III Trauma	Lat: N 46° 25.000'	5 min	1.5 hrs	208-799-5799	X		415 6 <sup>th</sup> Street Lewiston, ID
	Long: W 117° 01.460'						
Tri State Memorial Level II Cardiac Level II CVA Level IV Cardiac	Lat: N 46° 24.125'	5 min	1.5 hrs	509-758-4665	X		1221 Highland Ave Clarkston, WA
	Long: W 117° 03.330'						
Dayton Memorial Level V Trauma	Lat: N 46° 18.749'	5 min	1.5 hrs	509-382-9351	X		1012 S. Third Street Dayton, WA
	Long: W 117° 58.170'						
Walla Walla Providence Medical Center Level I Cardiac Level II CVA Level III Trauma	Lat: N 46° 18.749'	10 mins	2 hrs	509-529-7608	X		401 W. Poplar Walla Walla, WA 99362
	Long: W 117° 58.170'						
Legacy Emanuel Level I Trauma Level I Burn Center	Lat: N 45° 32.668'	2.5 hrs	6 hrs	503-413-2200	X		2801 N. Gantenbein Ave. Portland, OR 97227
	Long: W 122° 40.293'						
6. Division / Crew Emergency Pre-Plan				<i>Update and discuss with assigned resources daily.</i>			
Fireline EMT / Medic's Division / Branch Location							
Air Hoist site location site: Lat: / Long: / Elevation:							
Helispot: Lat: / Long: / Elevation:							
7. Prepared By (Medical Unit Leader)		8. Date/Time		9. Reviewed By (Safety Officer)		10. Date/Time	
MEDL Brandon Bennewate 		08/04/2021 1600		SOF2 Mike Seymour 		08/04/2021 1600	

# MEDICAL PLAN (ICS 206 WF) CIIMT 12

Medical Incident Report																													
<p><b>FOR A NON-EMERGENCY INCIDENT, WORK THROUGH CHAIN OF COMMAND TO REPORT AND TRANSPORT INJURED PERSONNEL AS NECESSARY.</b></p> <p><b>FOR A MEDICAL EMERGENCY: IDENTIFY ON SCENE INCIDENT COMMANDER BY NAME AND POSITION AND ANNOUNCE "MEDICAL EMERGENCY" TO INITIATE RESPONSE FROM IMT COMMUNICATIONS/DISPATCH.</b></p>																													
<p><b>Use the following items to communicate situation to communications/dispatch.</b></p>																													
<p><b>1. CONTACT COMMUNICATIONS / DISPATCH</b> (Verify correct frequency prior to starting report)  <i>Ex: "Communications, Div. Alpha. Stand-by for Emergency Traffic."</i></p>																													
<p><b>2. INCIDENT STATUS:</b> Provide incident summary (including number of patients) and command structure.  <i>Ex: "Communications, I have a Red priority patient, unconscious, struck by a falling tree. Requesting air ambulance to Forest Road 1 at (Lat./Long.) This will be the Trout Meadow Medical, IC is TFLD Jones. EMT Smith is providing medical care."</i></p>																													
Severity of Emergency / Transport Priority	<input type="checkbox"/> <b>RED / PRIORITY 1</b> Life or limb threatening injury or illness. Evacuation need is <b>IMMEDIATE</b> <i>Ex: Unconscious, difficulty breathing, bleeding severely, 2<sup>o</sup> - 3<sup>o</sup> burns more than 4 palm sizes, heat stroke, disoriented.</i> <input type="checkbox"/> <b>YELLOW / PRIORITY 2</b> Serious injury or illness. Evacuation may be <b>DELAYED</b> if necessary. <i>Ex: Significant trauma, unable to walk, 2<sup>o</sup> - 3<sup>o</sup> burns not more than 1-3 palm sizes.</i> <input type="checkbox"/> <b>GREEN / PRIORITY 3</b> Minor injury or illness. <b>Non-Emergency transport</b> <i>Ex: Sprains, strains, minor heat-related illness.</i>																												
Nature of Injury or Illness & Mechanism of Injury	Brief Summary of Injury or Illness <i>(Ex: Unconscious, Struck by Falling Tree)</i>																												
Transport Request	Air Ambulance / Short Haul/Hoist Ground Ambulance / Other																												
Patient Location	Descriptive Location & Lat. / Long. (WGS84)																												
Incident Name	Geographic Name + "Medical" <i>(Ex: Trout Meadow Medical)</i>																												
On-Scene Incident Commander	Name of on-scene IC of Incident within an Incident <i>(Ex: TFLD Jones)</i>																												
Patient Care	Name of Care Provider <i>(Ex: EMT Smith)</i>																												
<p><b>3. INITIAL PATIENT ASSESSMENT:</b> Complete this section for each patient as applicable (start with the most severe patient)</p> <p>Patient Assessment: See IRPG PAGE 106</p>																													
Treatment:																													
<p><b>4. TRANSPORT PLAN:</b></p> <p>Evacuation Location (if different): <i>(Descriptive Location (drop point, intersection, etc.) or Lat. / Long.)</i> Patient's ETA to Evacuation Location:</p>																													
Helispot / Extraction Site Size and Hazards:																													
<p><b>5. ADDITIONAL RESOURCES / EQUIPMENT NEEDS:</b></p> <p><i>Example: Paramedic/EMT, Crews, Immobilization Devices, AED, Oxygen, Trauma Bag, IV/Fluid(s), Splints, Rope rescue, Wheeled litter, HAZMAT, Extrication :</i></p>																													
<p><b>6. COMMUNICATIONS: Identify State Air/Ground EMS Frequencies and Hospital Contacts as applicable</b></p> <table border="1" style="width: 100%; border-collapse: collapse;"> <thead> <tr> <th style="width: 10%;">Function</th> <th style="width: 20%;">Channel Name/Number</th> <th style="width: 15%;">Receive (RX)</th> <th style="width: 15%;">Tone/NAC *</th> <th style="width: 15%;">Transmit (TX)</th> <th style="width: 15%;">Tone/NAC *</th> </tr> </thead> <tbody> <tr> <td>COMMAND</td> <td></td> <td></td> <td></td> <td></td> <td></td> </tr> <tr> <td>AIR-TO-GRND</td> <td></td> <td></td> <td></td> <td></td> <td></td> </tr> <tr> <td>TACTICAL</td> <td></td> <td></td> <td></td> <td></td> <td></td> </tr> </tbody> </table>						Function	Channel Name/Number	Receive (RX)	Tone/NAC *	Transmit (TX)	Tone/NAC *	COMMAND						AIR-TO-GRND						TACTICAL					
Function	Channel Name/Number	Receive (RX)	Tone/NAC *	Transmit (TX)	Tone/NAC *																								
COMMAND																													
AIR-TO-GRND																													
TACTICAL																													
<p><b>7. CONTINGENCY: Considerations:</b> If primary options fail, what actions can be implemented in conjunction with primary evacuation method? Be thinking ahead. .</p>																													
<p><b>8. ADDITIONAL INFORMATION:</b> Updates/Changes, etc. .</p>																													
<p><b>REMEMBER:</b> Confirm ETA's of resources ordered. Act according to your level of training. Be Alert. Keep Calm. Think Clearly. Act Decisively. .</p>																													



# COVID GUIDELINES



NWCG screening Tool

## **MASKS ARE REQUIRED:**

BRIEFINGS.

CAN'T MAINTAIN 6FT SOCIAL DISTANCING OUTSIDE.

INDOORS.

VEHICLES. (Example: More than one person in vehicle)

## **MASK WEARING EXCEPTION:**

ALONE IN AN ENCLOSED SPACE. (Example: One person in Vehicle)

ACTIVELY ENGAGED IN FIREFIGHTING ON THE FIRELINE.

OUTSIDE AND CAN MAINTAIN 6FT APART.

EATING OR DRINKING (6FT SOCIAL DISTANCE)

PLEASE CONTACT THE GREEN RIDGE COVID  
HOTLINE IF YOU HAVE ANY QUESTIONS ABOUT COVID, SYMPTOMS,  
AND OR FREE TESTING.

**GREEN RIDGE COVID HOTLINE # 971-245-9407**

## GREEN RIDGE FIRE FREE COVID TESTING

1. Test is 100% voluntary. **"HIGHLY RECOMMENDED"**
2. The email address below goes straight to the Covid Task Force and is **HIPPA** (Health Insurance Portability and Accountability Act) Compliant. Also, any phone calls or texts to the Covid Hotline is following HIPPA.
3. Please email: **2021.lick.plans@firenet.gov** or call Covid Hotline: **971-245-9407** to schedule your test.
4. We can test you at ICP or Wooten.
6. The test only takes 30 minutes to get results.
7. Please check with your employer or agency if they want you to test before you Demob.
8. Try to let us know 3-days before your demob day so that we can make it as quick as possible.



## Northwest MAC Group

Northwest Coordination Center  
150 SW Harrison St Suite 400  
Portland OR 97201  
503-808-2720

---

August 3, 2021

To: Incident Commanders on Pacific Northwest (PNW) IMTs, IMTs Working in the Geographic Area, and all PNW Agency Administrators

From: Chuck Turley, PNW MAC Acting-Chair on Behalf of All PNW MAC Agency Executives

Subject: COVID Mitigation Expectations/Requirements

The frequency of COVID exposure and cases is increasing on our PNW wildfire incidents and within support functions. PNW MAC has reviewed the multiple guidance documents provided by CDC, Wildland Fire Medical and Public Health Advisory Team (MPHAT), and federal, state, and local entities. Beginning immediately our expectation and direction is that all PNW incidents and their support functions will implement and enforce the following.

- For resources assigned to an incident within the PNW and for our NW IMTs assigned outside the northwest, wear a mask at all times whether inside or outside, vaccinated or unvaccinated, unless you are working alone or are on the fire line. Having a medical exemption is the only exception.

This direction applies to all levels of incident operations and all aspects of an incident including but not limited to transportation to/from incident, ICPs, spike camps, helibases, tanker bases, ground support units, etc.

Thank you for your vigilance of COVID protections.

Respectfully,

---

Chuck Turley  
PNW MAC Acting-Chair  
Washington Department of Natural Resources

---

Date

---

•Bureau of Land Management  
•U.S. Forest Service  
•U.S. Fish and Wildlife Service  
•National Park Service

•Bureau of Indian Affairs  
•Washington State Fire Marshal  
•Washington State Association of Fire Chiefs  
•Washington State Dept. of Natural Resources

•Oregon Department of Forestry  
•Oregon Fire Chiefs Association  
•Oregon State Fire Marshal



# Human Resource Message

## *Have you checked-in AT HOME yet?*

An important part of taking care of your people is making sure your loved ones at home know how you are doing. This is hard, important work you are doing out here. Make the time to share your efforts with your family back home—they need to know how you are doing—and we need them to support you. ***NO SUCCESS AT WORK IS WORTH A FAILURE AT HOME.***

A part of leadership is caring for the well being of your troops. High morale will produce high results. Encourage your firefighters to check-in at home.

---

## Trainees

A Training Specialist has been set up next to Check-In at the Dayton ICP.

Please use the following QR code to register:



If you have any questions call the Training Specialist at (206) 718-3471. Phone does not accept text messages. E-mail any documentation to [2021.GreenRidge@firenet.gov](mailto:2021.GreenRidge@firenet.gov)

Remember to get as much ink in your taskbook as possible **and** get a performance rating (ICS 225) from trainer.

## Virtual Timekeeping Finance Message

<b>Fire Name:</b> Lick Creek	<b>Fire Name:</b> Dry Gulch	<b>Fire Name:</b> Green Ridge
<b>Fire Number:</b> OR-UMF-000658	<b>Fire Number:</b> WA-SES-020655	<b>Fire Number:</b> WA-UMF-000659
<b>Accounting Code:</b> P6N47M (0614) 221 – LAJ	<b>Accounting Code:</b> PNN45S (1522) 221 – LAG	<b>Accounting Code:</b> P6N5AV (0614) 221 – LSL
Email: <a href="mailto:2021.lick.finance@firenet.gov">2021.lick.finance@firenet.gov</a>		<a href="mailto:2021.greenridge.finance@firenet.gov">2021.greenridge.finance@firenet.gov</a>
<b>Finance Phone #'s: (971) 245-0248 or (971) 727-7461</b>		



US Forest Service Fire, Fuels and Aviation Employees charging to B-codes, please remember to charge any overtime hours to the incident's override and P-code; B-codes are for Base 8 hours only. Payroll corrections will be required for any overtime charged incorrectly to a B-code. Thank-you.

### Finance Documents Needed upon "Check In" (If Not Already Submitted):

Please email these documents or scan the QR Code below, attach & submit.			
<b>Agency Equipment/ Crews:</b>	<b>Overhead:</b>	<b>Contract Equipment/ Contract Crews:</b>	<b>Cooperator:</b>
<ul style="list-style-type: none"> <li>• Manifest - showing employment type (GS or WG) or AD rates if applicable</li> </ul>	<ul style="list-style-type: none"> <li>• AD/Casual Hire Form</li> <li>• If regular Agency please ensure "GS" or "WG" is written on your first CTR</li> </ul>	<ul style="list-style-type: none"> <li>• Agreement</li> <li>• Manifest</li> <li>• Resource Order</li> <li>• Inspections</li> </ul>	<ul style="list-style-type: none"> <li>• Cooperative Agreement</li> <li>• Resource Order</li> </ul>

### Please submit your CTR/Shift Tickets using the QR code or email address below:

Don't Forget to put your RO # on your CTR/Shift Ticket – Thank You

<b>Lick Creek/Dry Gulch Finance Email:</b> <a href="mailto:2021.lick.finance@firenet.gov">2021.lick.finance@firenet.gov</a>	<b>Green Ridge Finance Email:</b> <a href="mailto:2021.greenridge.finance@firenet.gov">2021.greenridge.finance@firenet.gov</a>
	
<b>Include the Word "Time" in the Subject Line of the Email</b>	

## MISSING TIME:

---

RO	Name	Dates
A-6	T3 HELO CREW, A-119 CREW	
A-6.1	Nathan Gilmore- HMGB	7/16-7/24
A-6.2	Chris Kendrick- HMGB	7/16-7/24
A-6.3	Mike Armstrong- HECM	7/16-7/24
A-41		
C-83	MP Forestry - need RO, contract, manifest	
E-26	KL Farms - see Finance	
E-157	7/31 CTR shows end time only	
E-173	WT - need RO	
O-5.5	Mentzer	7/28-8/4
O-79	Evans	7/30-8/4
O-123	Dietz	7/28-8/4
O-171	Welker	7/28-8/4
O-333	Turner - checkin with Finance	

# ICP LOGISTICS NOTES

Supply: 0530-2200

Ordering: 0600-2100

Communications: 0600-2200

Food: Breakfast: 0600

Dinner: 1700 for ICP staff & 2000 for crews

Refer Trailer: 0530-0900 1130-1330 1630-2100

Showers: 0500-1200 & 1400-2200

Laundry service: Open 24/7. 24hr turn around.

Ground Support: 0600-2200

Mechanic: 0700-2200

Weed Wash: 0700-2000

Fuel: @ ICP (County Yard 415N. Guernsey Ave.) 0700-2000

@ Wooten: 0700-2000

Medical: 0700-2200

## PLEASE DO:

-Note & mark the location (DIV, intersection, DP, camp, latt/long) of equipment: pumps, hose, tanks, etc. and please bring it to the attention of the DIV and ask them to report to Logistics.

-Sleep in marked sleeping areas only.

-Pick up after yourself: trash, cigarette butts, etc.

-Treat other people the way you want to be treated.

## PLEASE DO NOT:

-Park in front of port-a-potties.

-Park in front of fire hydrants.

-Park in the street in front of chow distribution.

-Leave your trash near port-a-potties.....it ONLY goes in the dumpster!

# DEMOB INSTRUCTIONS

Demob steps for all resources must be done in order:

Proceed to **Dayton High School**, 614 S. 3<sup>rd</sup> Street, Dayton, WA.

1. All line resources must have a post-incident inspection and complete a **Weed Wash**.
2. Turn in radios to the **Communications Unit**.
3. Turn any checked out items to the **Supply Unit**.
4. **Finance** needs you to get your final shift ticket signed by your supervisor before going to close out your time. Then take it to Finance and finalize your time.
5. **Demobilization Unit** will be your last stop. Make sure they know your travel times. If you are going to rest overnight let them know where you plan to stay.

**\*\*\* FINAL TRAVEL CTR'S MUST BE SIGNED BY YOUR SUPERVISOR ON THIS INCIDENT! FINANCE CANNOT SIGN THEM FOR YOU! \*\*\***

## TENTATIVE DEMOBS

8/5/2021

EQUIPMENT	TIME	TYPE	RESOURCE NAME
E-1	0700	WTT2	A-1 CONSTRUCTION GR
E-70	0715	FEL1	SWANSON LOGGING DG
E-72	0730	FEL1	SWANSON LOGGING DG
E-73	0745	FEL2	SWANSON LOGGING DG
E-75	0800	SKD1	SWANSON LOGGING DG
E-76	0815	SKD1	SWANSON LOGGING DG
<b>OVERHEAD</b>			
O-164	0700	FMOD	UNITED FALLERS GR
O-165	0715	FMOD	UNITED FALLERS GR
O-170	0730	SEC2	COLE SHIRLEY GR
O-171	0740	SEC2	NATHAN WELKER GR

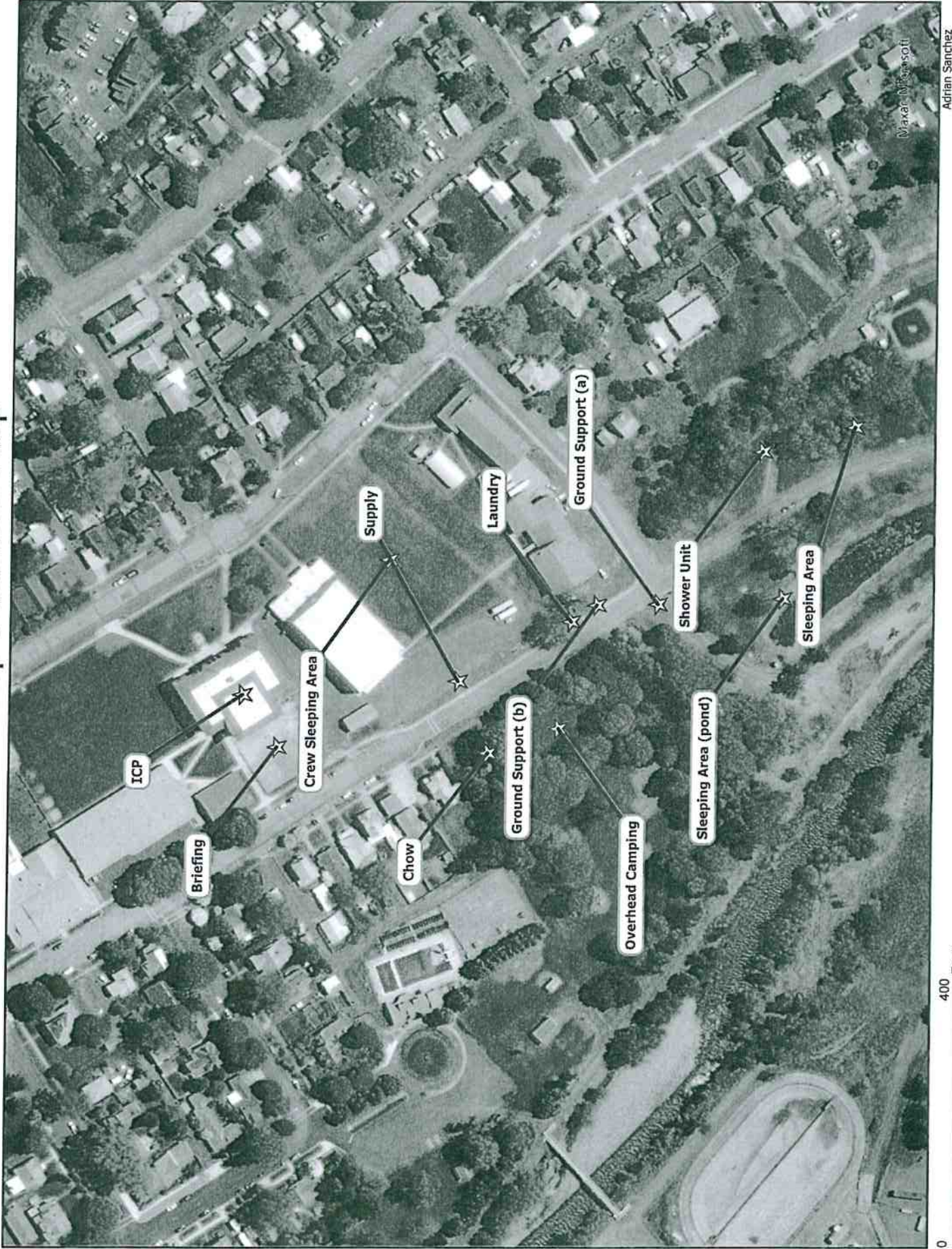
## TENTATIVE DEMOB

8/6/2021

OVERHEAD	TIME	TYPE	RESOURCE NAME
O-147		TFLD	MATTJONES GR
O-151		FACL	JAMES BARHAM GR
O-212		READ	WILLIAM MARQUARDT LC
O-242		AADM	ED GUZMAN LC



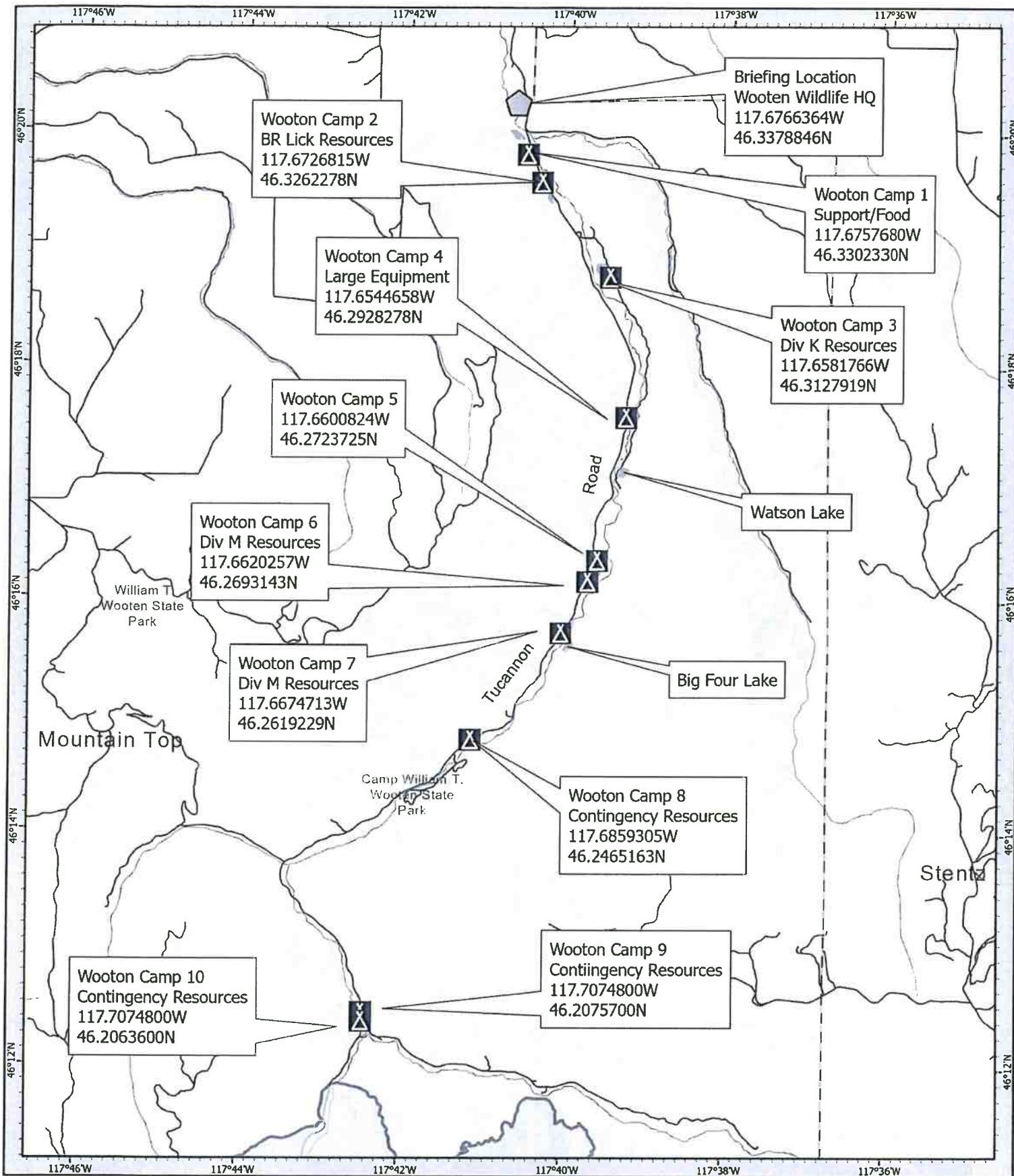
# Base Camp Facilities Map



Maxar-Microsoft

Adrian Sanchez  
Updated:  
07/30/2021 @ 1900

0 400 Feet



Camp  
 Wildfire Daily Fire Perimeter  
 Roads  
 Lat/Long in Decimal Degrees

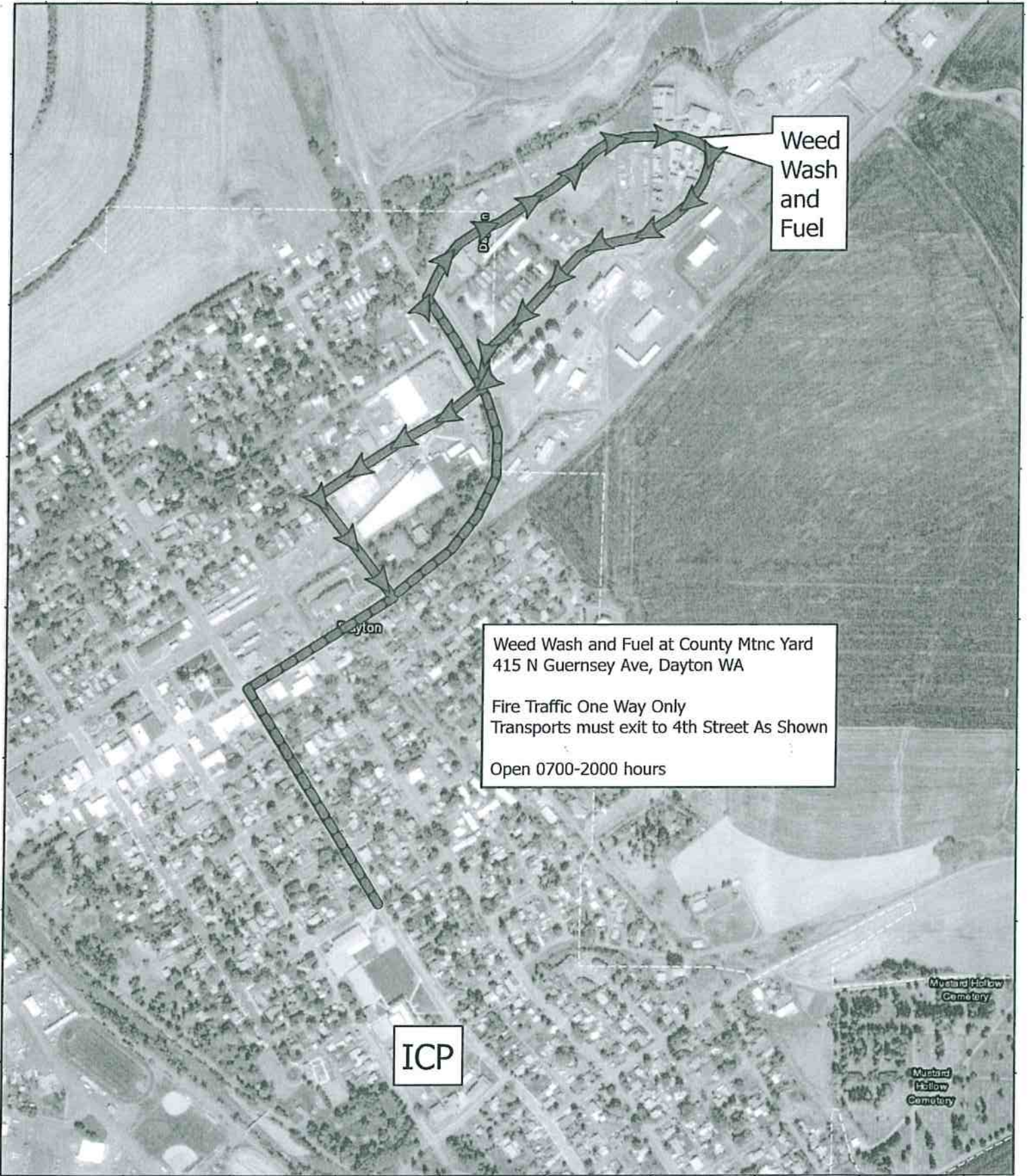
**Wooten Camp Area**  
**Green Ridge**  
 OR-UMF-000659

8/4/21



1:75,000 NAD83 UTM 11N  
 0 0.5 1 1.5 Miles

Prepared by CA-IT/25/3/2021/1047



Weed Wash and Fuel

Weed Wash and Fuel at County Mtn Yard  
 415 N Guernsey Ave, Dayton WA  
 Fire Traffic One Way Only  
 Transports must exit to 4th Street As Shown  
 Open 0700-2000 hours

ICP

Mustard Hollow Cemetery

Mustard Hollow Cemetery

117°58'W

-  One Way
-  Route

Weed Wash Map  
 Green Ridge  
 OR-UMF-00659



1:0,000

NR083 UTM 11N

0

0.25





