

☆☆ CORRECTED ☆☆

Lick Creek – Green Ridge Fires

OR-UMF-000658 / OR-UMF-000659

P6N5AV (0614)

Send TIME to: 2021.greenridge.finance@firenet.gov

Friday, August 20, 2021

Operational Period 0600-2200



Rocky Mountain IMT2 Black

Troy Hagan, ICT2 — Bill Waln, Deputy ICT2

Public Fire Information
2021.greenridge@firenet.gov

IAP/Map/Demob/Check-in/Etc

Communications 24-Hour
Emergency Number:

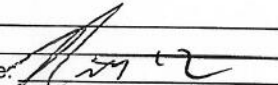
971-727-7965



<https://tinyurl.com/jtb3wzk6>

1. Incident Name: Lick Creek / Green Ridge	2. Operational Period:	Date From: 08.20.2021 Time From: 0600	Date To: 08.20.2021 Time To: 2200
3. Objective(s): <ul style="list-style-type: none"> • Provide for the safety of firefighters and the public through the utilization of strategic and deliberate risk assessment processes. Ensure incident within an incident (IWI) protocols are established. • Develop and implement strategies and tactics with the highest probability of success to protect identified values at risk. • Maintain and enhance relationships, through timely communication, actively engaging the Agency Administrators, the public, and stakeholders. • Coordinate with the READs to ensure natural and historical values are identified and protected. • Assist with initial attack as requested, when it will not impede meeting of incident objectives. • Manage the incident following established COVID-19 mitigation guidelines limiting spread of infectious diseases. 			
4. Safety <p style="text-align: center;">HOW'S YOUR PASSION FOR SAFETY?</p> <p>Often our emphasis on doing this dangerous job safely needs to be fine-tuned with a safety check in. We know what safety is, we know what things to watch out for, but our ability to concentrate on this aspect of our wildfire suppression responsibility often is impaired by situations, both on the fire and off, physical difficulties, and inconveniences that have a profound effect on our frame of mind and/or our ability to focus attention on safe processes. It is critical that our focus is sharp while doing our jobs so that distraction does not impair our ability to think clearly and act decisively.</p> <p>Human Factor Watch Outs</p> <p>Watching out for yourself, coworkers, subordinates and your boss is a primary responsibility for EVERYONE involved in high risk activities. Watch outs are not just for the tactical environment. The Human Factor Watch Outs are designed to create an opportunity for you to take a tactical pause and re-evaluate your situation.</p> <p>If any of the following occur:</p> <ul style="list-style-type: none"> • Your briefing was unclear. • You are not getting answers to your questions. • You are not getting clear acknowledgment of your message. • You are encountering hazards that are not mentioned in your brief. • You see something that makes you uncomfortable. • Your team is not debriefing. • Your operational tempo is adversely effecting your ability to maintain command and control. <p>Take moment to re-assess your situation. Think. Stop, Think, Talk before Acting.</p>			
5. Prepared by PSC2:		Name: Rocco Smart Signature: <u>Rocco Smart</u>	
6. Approved by Incident Commander:		Name: Troy Hagan Signature: <u>Troy Hagan</u>	
ICS 202	IAP Page 2	Date/Time: Date: 08/19/2021 1500 hours	

ORGANIZATION ASSIGNMENT LIST (ICS 203)

1. Incident Name: LICK CREEK/GREEN RIDGE		2. Operational Period: Date From: 8/20/2021 Time From: 0600		Date To: 8/20/2021 Time To: 2200	
3. Incident Commander(s) and Command Staff:			7. Operation Section:		
IC	Troy Hagan	Operations Chief	Shay Rogge, Brad Pietruszka (T)		
Deputy	Bill Wain	Planning Ops	Troy Mueller		
Safety Officer	Rob Pelton, Pat Medina, Eric White (T), Eric Adams (T)				
Medical	Rachel Lucero, Lionel Vangurp (T), Stephanie McGovern (T)		Branch I	Rodney Redinger, Jay Godson (T)	
Information Officer	Dawn Sanchez, Brant Porter, Olivia Bruce (T)	Division/Group	K	Nate Kerschner, Isaiah Jimenez (T)	
Liaison Officer	Sam Carle, Mark Neely (V)	Division/Group	M	Brandon Bonenberger	
Human Resource Specialist	Mike Baines	Division/Group	LICK	Jon Stonelake	
4. Agency/Organization Representatives:		Division/Group	NORTH	Unstaffed	
USFS AADM	Kelly Lawrence				
USFS AREP	Susan Piper				
WA DNR	Wyatt Leighton, Bob Johnson				
ODF	Matt Howard				
Asotin Co Fire Dist 1	Noel Hardin	Division/Group	P	Ian Barrett, Aaron Woodham (T)	
Columbia Co Fire 3	Jeromy Phinney	Division/Group	S	Tom Kenny	
Garfield Co Fire Dist 1	James Cleveland	Division/Group	W	Unstaffed	
WFS	Devin McCosh	Division/Group	STRUCTURE	Joe Tjaden	
WDFW - LEO	Paul Mosman	Division/Group	EAST CONTINGENCY	Nick Collard, David Collins (T)	
COVID Liaison	Sean Gullikson, Chloe Read <i>Sharon Clark</i>				
5. Planning Section:			8. Air Operations Branch		
Chief	Rocco Snart, Heather Gonzalez, Peter Barth		Air Operations Branch Director	Carolyn Blatz, Matt Lingenfelter (T)	
Resource Unit	Kellie Stover, Amy Daniels, Rick Lancaster (T)		Air Support Group Supervisor	Ken Ostrom	
Situation Unit	Tara Umphries, Kristen Marshall (T), Brenda Wasielewski (T)		Air Tactical Group Supervisor	Craig Hall	
Demobilization Unit	Dave Farmer, <i>Deanna Engelmann</i>		Helibase Manager	Ken Ostrom	
Incident Meteorologist	David Shallenberger		9. Finance/Administration Section:		
Status Check-In	Rose Long, <i>Holly Harris</i>		Chief	Mavis Biastoch, Patty Wyatt	
Fire Behavior	Larry Long, Boyd Lebeda		Time Unit	Kayla Clark	
Documentation Unit	Spencer Pollock (V)		Cost Unit	Kristie Bowen (T)	
GIS Specialist	Sarlyn McCormick, Faith Dziedzic, Sarah Strehle (T), <i>Justin Mund (V)</i>		Compensation Unit	Pearl Cowan	
Strategic Planner					
Long Term Analyst	Dan Bartel (V), Kirk Will (T)				
Training Specialist	Steve Ellis (V), Wendy Fischer (T)				
6. Logistics Section					
Chief	Wally Leander, Randy Spiering, Darin Gehring				
Ground Support Unit	Jamie Rietz				
Communications	Jim Midyett				
Facilities - ICP	Monty Bollock, D. Brown, Ish Ennis				
Facilities - Rose Spike	Shelly White				
IT Specialist	Kevin Watts, Jason Reynolds (T) <i>changed to ORDM</i>				
Supply Unit	Robin Brooks, Nate Haynes (T)				
Food Unit	Clyde Leggins				
Security	Darrell Hanson, Clyde Harris (T)				
Prepared By: Name: Amy Daniels		Position/Title: RESL		Signature: 	
ICS 203		Date/Time: 8/19/2021 2100 hours			



Lick Creek / Green Ridge Weather Forecast



FORECAST NO: 40
FORECAST FOR: Friday Operational Period
SHIFT DATE: 8/20/2021
DATE AND TIME ISSUED: 8/19/2021 at 1900 PDT

NAME OF FIRE: Lick Creek/Green Ridge
UNIT: OR-UMF
SIGNED: David Shallenberger - Incident Meteorologist
240-778-5019

...Showers and Thunderstorms for Friday; then dry...

WEATHER DISCUSSION: Friday will feature a cold front moving through the OR/WA region Friday afternoon into the evening. Showers and thunderstorms will develop ahead of the boundary with lingering chances of rainfall last through the night and into the day on Saturday. A few thunderstorms could produce some gusty winds mainly Friday evening. Some lingering moisture behind the front will leave some showers over the incident for Saturday with a damp day anticipated. A drier air mass will move in for Sunday with an increase in wind gusts up to 25 mph.

TODAY:

WEATHER: Mostly cloudy. Showers and a thunderstorm or two in the late afternoon.
MAXIMUM TEMPERATURE: 60-65° above 5000 feet. 67-72° valley bottoms.
MINIMUM RELATIVE HUMIDITY: 50-55% above 5000 feet. 40-45% valley bottoms.
20-FOOT RIDGETOP WINDS: Northwest 4-8 mph with gusts up to 14 mph in the afternoon.
GREEN RIDGE CREEKS: Light and variable becoming upslope/upcanyon after 1000.
INVERSION/STABILITY: Low level inversion will lift around 1100.
CHANCE OF WETTING RAIN (≥ 0.10"): 30%. **HAINES INDEX:** 3 (Low) **LAL:** 2

TONIGHT:

WEATHER: Mostly cloudy. Showers and thunderstorms likely early. Gusty winds with some storms.
MINIMUM TEMPERATURE: 50-55° above 5000 feet. 45-50° valley bottoms.
MAXIMUM RELATIVE HUMIDITY: 80-90% above 5000 feet. 90-100% valley bottoms.
20-FOOT RIDGETOP WINDS: Northwest 3-6 mph with gusts to 10 mph.
GREEN RIDGE CREEKS: Downslope/downcanyon 4-7 mph after 2000.
INVERSION/STABILITY: Moderate inversion.
CHANCE OF WETTING RAIN (≥ 0.10"): 50%

SATURDAY:

WEATHER: Mostly cloudy. Showers and a thunderstorm or two before 3pm, then becoming partly cloudy.
MAXIMUM TEMPERATURE: 55-60° above 5000 feet. 60-65° valley bottoms.
MINIMUM RELATIVE HUMIDITY: 60-70% above 5000 feet. 50-55% valley bottoms.
20-FOOT RIDGETOP WINDS: Northwest 3-6 mph with gusts up to 12 mph in the afternoon.
GREEN RIDGE CREEKS: Light and variable becoming upslope/upcanyon after 3pm.
INVERSION/STABILITY: Low level inversion will lift around 1300.
CHANCE OF WETTING RAIN (≥ 0.10"): 40%. **HAINES INDEX:** 3 (Low) **LAL:** 2

Observations from the field are valuable!

Email any obs to david.shallenberger@noaa.gov or text them to 240-778-5019.

FIRE BEHAVIOR FORECAST

FORECAST NUMBER: 25	TYPE OF FIRE: Wildfire
FIRE NAME: Lick Creek & Green Ridge Fires	OPERATIONAL PERIOD: 08-20-2021 0600-2200
DATE ISSUED: 08-19-2021	TIME ISSUED: 1900
UNIT: Umatilla NF OR-UMF-000658 & 000659	SIGNED: //s// Larry Long FBAN

INPUTS

****See the attached Incident Weather Forecast****

OUTPUTS FIRE BEHAVIOR

GENERAL: Fire behavior should be moderate today with the forecasted weather. The 40% humidity combined with the lower wind speeds will result in slow to moderate rates of speed, single tree torching, and a minimal chance of crown fire.

Probability of ignition is 50% with spotting distances of 1500 feet possible. Haines Index 2

1-hour fuel moistures: 7%, 10 hours at 4%, 100 hours at 7%, 1000-hour fuels are ~8 % and live fuel moistures are at around 75-95%. ERCs are above the 97th percentile.

Fuel model	Max. Flame Length	Day Shift ROS	Night Shift ROS	Spotting
Timber little and understory TU5/TL4	7-10 ft.	7-15 ch/hr	N/A	.3 miles
Short Grass/Shrub – GR2/GS2	1-2 ft.	5-7 ch/hr	N/A	.3 miles

SPECIFIC:

Green Ridge: The fire will continue to progress up and out of the drainages on the south flank, pushed by the upslope winds and the northwest general winds. The fire will be active in the heavier concentrations of fuels as the winds surface causing torching and spotting. The active line in divisions W, S, & P will move along the drainages and over the ridges to the east and southeast. Expect short range spotting where slope and wind line up.

Lick Creek: The NW winds today should again be favorable by pushing the heat and smoke into the interior. Expect interior fuels to continue to consume and put off smoke. Link Creek is not expected to gain any more acreage.

AIR OPERATIONS: Heavy smoke may hamper air operations.

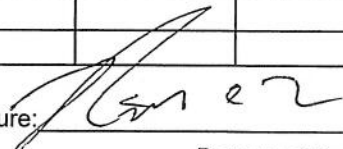
SAFETY

Local Thresholds – **WATCHOUT:** Combinations of any of these factors can greatly increase fire behavior:

Elevations	20' Winds +15 mph	RH <20%	Temp +80°	1000hr Fuel <7%
3000 –5500'	NW 4-8 mph G14	40-45%	67-72°	~8%

ASSIGNMENT LIST (ICS 204 WF)

CONTROLLED UNCLASSIFIED
INFORMATION//BASIC

1. Incident Name:		2. Operational Period:				3. Branch	Division
LICK CREEK/GREEN RIDGE		Date From: 08/20/21	Date To: 08/20/21			I	K
		Time From: 0600	Time To: 2200				
4. Operations Personnel:							
Operations Section Chief: Shay Rogge, Brad Pietruszka (T)				Planning Ops: Troy Mueller			
Branch Director: Rodney Redinger, Jay Godson (T)				Safety: Rob Pelton, Eric White (T)			
Division/Group Supervisor: Nate Kerschner, Isaiah Jimenez (T)				Air Attack: Craig Hall			
5. Resources Assigned:							
Resource Identifier	ALS	LWD	Leader	Personnel	Request #	Hours	Reporting Location
TFLD Nilson		8/25	Nilson	1	O-523	0600-2200	Dayton
TFLD(T) Livingston		8/26	Livingston	1	O-568	0600-2200	Dayton
ENG4 Ice Crescent		8/26	Freitag	3	E-285	0600-2200	Dayton
ENG6 Terrance Titus		8/26	Lambrecht	2	E-255	0600-2200	Dayton
WTT2 Christman Trucking GR		9/5	Blazek	1	E-2	0600-2200	Dayton
WTS2 Vegetation Solutions		8/27	Cole	2	E-299	0600-2200	Dayton
DOZ2 Alpine GR		9/2	Briggs	2	E-93	0600-2200	Dayton
6. Work Assignments:							
Provide point protection for structures within the Division.							
Continue to improve contingency dozer line and handline from repeater to Patrick Grade Road.							
Continue to improve where needed on 46 Road north of Godman staging to DP-220 DIV M break.							
Patrol and mop up from DP-220 to Godman staging and Godman staging to DP 260.							
7. Special Instructions:							
Adventure Medics (E-77) located at DP-240.					Lead READ Will Marquardt: 530-402-6202		
Operations will identify closest resources while DIVS identifies specific resources to respond to IA within TFR.							
Please ensure 3/32" fish screens are used at all draft sites in Punjab Creek, Touchet, and Tucannon Rivers.							
8. Communications							
Name	Ch	Function	Rx Freq	Rx Tone	Tx Freq	Tx Tone	Notes
SEE ICS 205 COMM PLAN							
9. Prepared by: Name:		Kellie Stover, Amy Daniels, Rick Lancaster(T)		RESL	Signature: 		
ICS 204		Date/Time: 8/19/2021 2200				Personnel Count: 12	

NIMS IAP

CONTROLLED UNCLASSIFIED INFORMATION//BASIC

ASSIGNMENT LIST (ICS 204 WF)

CONTROLLED UNCLASSIFIED
INFORMATION//BASIC

1. Incident Name:	2. Operational Period:	3. Branch	Division
LICK CREEK/GREEN RIDGE	Date From: 08/20/21 Date To: 08/20/21 Time From: 0600 Time To: 2200	I	M

4. Operations Personnel:			
Operations Section Chief: Shay Rogge, Brad Pietruszka (T)	Planning Ops: Troy Mueller		
Branch Director: Rodney Redinger, Jay Godson (T)	Safety: Rob Pelton, Eric White (T)		
Division/Group Supervisor: Brandon Bonenberger	Air Attack: Craig Hall		

5. Resources Assigned:							
Resource Identifier	ALS	LWD	Leader	Personnel	Request #	Hours	Reporting Location
DIVS Rokosh		8/27	Rokosh	1	O-363.54	0600-2200	Rose Spike
DIVS(T) Corser		8/22	Corser	1	O-324	0600-2200	Rose Spike
TFLD(T) Bowen		8/20	Bowen	1	O-463	0600-2200	Rose Spike
TFLD(T) Dary		8/21	Dary	1	O-460	0600-2200	Rose Spike
HC2IA UMF Crew 3		8/21	Wagner	20	C-104	0600-2200	Rose Spike
HC2IA Vet Crew		8/20	Leggett	18	C-105	0600-2200	Rose Spike
FMOD Mill Creek GR		8/20	Johnson	2	O-442	0600-2200	Rose Spike
FMOD Swedberg		8/22	Wadley	1	O-439	0600-2200	Rose Spike
ENG3 Prescott E-930		8/23	Langham	5	E-254	0600-2200	Rose Spike
ENG3 B-5232		8/26	Fry	4	E-256	0600-2200	Rose Spike
ENG4 Chewack LC		8/22	Starr	3	E-85	0600-2200	Rose Spike
ENG4 Inbound E18 GR		8/21	Navarro	3	E-161	0600-2200	Rose Spike
ENG4 AZ-IMR 2142		8/28	Linker	9	E-283	0600-2200	Rose Spike
WTS3 JTS 2 GR		8/31	Elam	1	E-172	0600-2200	Wooten Camp
DOZ3 Kiser & Kiser 1 GR		8/26	MacKay	2	E-178	0600-2200	Rose Spike
SOF2 Roberts		8/24	Roberts	1	O-567	0600-2200	Rose Spike

6. Work Assignments:

Identify hose and pump locations for backhaul.
 Hold and mop-up from 40 Road to the DIV K/M break.
 Burnout islands as needed.
 Coordinate with adjacent Divisions for additional holding resources.
 Improve handlines where possible and secure spot fires north of DIV K/M containment lines.

7. Special Instructions:

REMS 10 (E-185) located at DP-17. Lead READ Will Marquardt: 530-402-6202

DIVS to identify equipment to be sent in an event of an IA within TFR. Operations will identify closest resources to respond to new incident.
 Please ensure 3/32" fish screens are used at all draft sites in Punjab Creek, Touchet, and Tucannon Rivers.

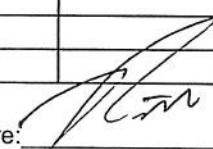
8. Communications							
Name	Ch	Function	Rx Freq	Rx Tone	Tx Freq	Tx Tone	Notes
SEE ICS 205 COMM PLAN							

9. Prepared by: Name: Kellie Stover, Amy Daniels, Rick Lancaster(T) RESL Signature:

ICS 204 Date/Time: 8/19/2021 2200 Personnel Count: 73

ASSIGNMENT LIST (ICS 204 WF)

CONTROLLED UNCLASSIFIED
INFORMATION//BASIC

1. Incident Name:		2. Operational Period:				3. Branch	Division
LICK CREEK/GREEN RIDGE		Date From: 08/20/21 Time From: 0600	Date To: 08/20/21 Time To: 2200			I	LICK
4. Operations Personnel:							
Operations Section Chief: Shay Rogge, Brad Pietruszka (T)				Planning Ops: Troy Mueller			
Operations Section Chief: Rodney Redinger, Jay Godson (T)				Safety: Rob Pelton, Eric White (T)			
Operations Section Chief: Jon Stonelake				Air Attack: Craig Hall			
5. Resources Assigned:							
Resource Identifier	ALS	LWD	Leader	Personnel	Request #	Hours	Reporting Location
ENG3 Smokey Bear		8/29	Quirarte	6	E-257	0600-2200	Rose Spike
ENG4 Central Wildfire		8/27	Ward	3	E-259	0600-2200	Wooten Camp
ENG6 Eagle Cap		8/28	Rivera	2	E-284	0600-2200	Wooten Camp
WTS2 Minam River DG		8/30	Henderson	1	E-40	0600-2200	Rose Spike
WTS3 JTS 1 GR		8/31	Elmer	1	E-170	0600-2200	Wooten Camp
EXCA Swanson Logging		9/1	Carter	1	E-77	0600-2200	Rose Spike
LOG Swanson Logging 1		8/31	Heitstamen	1	E-113	0600-2200	Rose Spike
LOG Swanson Logging 2		8/31	Dyer	1	E-114	0600-2200	Rose Spike
LOG Swanson Logging 3		8/31	Jared	1	E-115	0600-2200	Rose Spike
LOG Swanson Logging 4		8/31	Carter	1	E-116	0600-2200	Rose Spike
6. Work Assignments:							
Identify pump locations and serial numbers. Inventory excess hoselays. Backhaul excess supplies and equipment.							
Mop-up all hotspots along the Division.							
Periodic patrols of the southern and western portion of the Lick fire.							
7. Special Instructions:							
Operations will identify closest resources while DIVS identifies specific resources to respond to IA within TFR.							
Please make sure 3/32" fish screens are used at all draft sites in Punjab Creek, Touchet, and Tucannon Rivers.							
Operational briefing to be broadcasted at 0630.						Lead READ Will Marquardt: 530-402-6202	
8. Communications:							
Name	Ch	Function	Rx Freq	Rx Tone	Tx Freq	Tx Tone	Notes
SEE ICS 205 COMM PLAN							
9. Prepared by: Name:				RESL	Signature: 		
Kellie Stover, Amy Daniels, Rick Lancaster(T)		Date/Time: 8/19/2021	2200	Personnel Count: 18			
ICS 204							

NIMS IAP

CONTROLLED UNCLASSIFIED INFORMATION//BASIC

ASSIGNMENT LIST (ICS 204 WF)

CONTROLLED UNCLASSIFIED
INFORMATION//MITTENS

1. Incident Name:	2. Operational Period:	3. Branch	Division
LICK CREEK/GREEN RIDGE	Date From: 08/20/21 Date To: 08/20/21 Time From: 0600 Time To: 2200	II	P

4. Operations Personnel:	
Operations Section Chief: Shay Rogge, Brad Pietruszka (T)	Planning Ops: Troy Mueller
Branch Director: Matt Norden, Deon Steinle (T)	Safety: Rob Pelton, Eric White (T)
Division/Group Supervisor: Ian Barrett, Aaron Woodham (T)	Air Attack: Craig Hall

5. Resources Assigned:							
Resource Identifier	ALS	LWD	Leader	Personnel	Request #	Hours	Reporting Location
ENG6 Earth Industries		8/25	Voss	3	E-246	0600-2200	Rose Spike
ENG6 ASF E623		8/27	Holmes	6	E-275	0600-2200	Rose Spike
SOFR Welsh		8/26	Welsh	1	O-565	0600-2200	Rose Spike
SOFR(T) Eric Adams		8/21	Adams	1	O-456	0600-2200	Rose Spike

6. Work Assignments:
Continue scouting line for holding features.

7. Special Instructions:
Wilderness Medics (E-39) located at DP-62. FOBS Gorsett will be in the Division scouting.
Lead READ Will Marquardt: 530-402-6202

8. Communications							
Name	Ch	Function	Rx Freq	Rx Tone	Tx Freq	Tx Tone	Notes
SEE ICS 205 COMM PLAN							

9. Prepared by: Name:	Kellie Stover, Amy Daniels, Rick Lancaster(T)	RESL	Signature:	
ICS 204	Date/Time: 8/19/2021 2200			Personnel Count: 11

ASSIGNMENT LIST (ICS 204 WF)

CONTROLLED UNCLASSIFIED
INFORMATION//BASIC

1. Incident Name:	2. Operational Period:	3. Branch	Division
LICK CREEK/GREEN RIDGE	Date From: 08/20/21 Date To: 08/20/21 Time From: 0600 Time To: 2200	II	S

4. Operations Personnel:	
Operations Section Chief: Shay Rogge, Brad Pietruszka (T)	Planning Ops: Troy Mueller
Branch Director: Matt Norden, Deon Steinle (T)	Safety: Rob Pelton, Eric White (T)
Division/Group Supervisor: Tom Kenny	Air Attack: Craig Hall

5. Resources Assigned:							
Resource Identifier	ALS	LWD	Leader	Personnel	Request #	Hours	Reporting Location
TFLD Mondragon		8/20	Mondragon	1	O-421	0600-2200	Grouse Spike
TFLD(T) Bateman		8/26	Bateman	1	O-569	0600-2200	Grouse Spike
HC1 Silver City IHC GR		8/20	Romero	21	C-96	0600-2200	Grouse Spike
HC2 Grayback 9		8/29	Blanco	20	C-119	0600-2200	Grouse Spike
WFM2 Metolius		8/31	Gregg	10	O-637	0600-2200	Grouse Spike
SMOD Williams 7-1		8/25	Sweeney	10	O-520	0600-2200	Grouse Spike
SMOD Slate Mtn		8/28	Alcantar-Torres	10	O-536	0600-2200	Grouse Spike
WTS2 R&K Water Service		8/30	Eggleston	1	E-73	0600-2200	Grouse Spike
WTS2 McDonald		8/24	McDonald	1	E-247	0600-2200	Grouse Spike
HEQB Neugebauer		8/29	Neugebauer	1	O-570	0600-2200	Grouse Spike
HEQB(T) Chris Carney		8/21	Carney	1	O-458	0600-2200	Grouse Spike
DOZ3 Bruce Young GR		8/26	Miltonberger	2	E-85	0600-2200	Grouse Spike
CHIP JML		8/23	Jasiel	3	E-241	0600-2200	Grouse Spike
SOFR Welsh		8/26	Welsh	1	O-565	0600-2200	Grouse Spike
EMTF Cusick, M		8/29	M. Cusick	1	O-578	0600-2200	Grouse Spike
EMTF Cusick, B		8/29	B. Cusick	1	O-580	0600-2200	Grouse Spike

6. Work Assignments:
Continue to scout for control lines, and identify opportunities for improving existing roads and natural control features.

7. Special Instructions:
Frontline EMS (E-61) assigned to the Division.


Lead READ Will Marquardt: 530-402-6202

8. Communications							
Name	Ch	Function	Rx Freq	Rx Tone	Tx Freq	Tx Tone	Notes
SEE ICS 205 COMM PLAN							

9. Prepared by: Name:	Kellie Stover, Amy Daniels, Rick Lancaster(T)	RESL	Signature:
ICS 204	Date/Time: 8/19/2021 2200		Personnel Count: 85

AIR OPERATIONS SUMMARY 220		Prepared By: Matt Lingenfelter	Prepared: 08/19/2020	Prepared Time: 1800
1. INCIDENT NAME: Green Ridge / Lick Creek		2. OPERATIONAL PERIOD 8/20/2021	START TIME: 0730	END TIME: 2130
			SUNRISE: 0558	SUNSET: 1955

3. REMARKS (Safety Notes, Hazards, Air Operations Special Equipment, etc.).



**Smokey says aviate
before you navigate. Have a safe day
pilots and air crews.**

4. READY ALERT AIRCRAFT:

IA: TBD
Medivac: 3JR @ KALW
Life Flight @ Walla Walla
3JR Short Haul @ KALW

Order through Communications
See Medical Plan in the IAP

5. TFR: 1/4930
24 Hours
12,000 MSL
31 NM VNW of
Walla Walla
POC Frequency 119.5250

6. PERSONNEL	NAME	PHONE #	7. FREQUENCIES	AM	FM	8A. FIXED-WING Ordering
AOBD	Carolyn Blatz	720-693-3194	A/A (TFR)	119.5250		AIRTANKERS/LEAD PLANES: ATGS order through Dispatch
AOBD (T)	Matt Lingenfelter	805-705-8621 970-294-2213	A/A (Secondary)	123.7000		8B. Aerial Supervision / Personnel / Location
ASGS	Ken Ostrom	307-272-3266	A/G (Primary)		168.2750	AIR ATTACK Platforms: Order through Operations
ATGS	Craig Hall	970-799-1231	A/G (Secondary)		168.5250	ATGS N400DS (Craig Hall)
HEBM	Unstaffed		VMED 28		155.3400	Lewiston, Idaho
Blue Mountain Interagency Dispatch	AC Desk	541-963-7171	AIRGUARD		168.6250 TX 110.9	

9. HELICOPTERS

FAA N#	TY	MAKE/ MODEL	BASE	START	AVAIL	REMARKS	FAA N#	TY	MAKE/ MODEL	BASE	START	AVAIL	REMARKS
359EV	3	AS 350 B3	ALW	0730	0800	EU, Initial Attack, Bucket, Recon, Cargo	187CH	1	CH-46	ALW	0730	0800	CWN Bucket
353JR	3	AS 350 B3	ALW	0730	0800	EU, Initial Attack, Bucket, Recon, Cargo, Short Haul							



10. TASK/ MISSION/ ASSIGNMENT (Type/ function includes: Air Tactical, Retardant, Recon, Personnel Transport, Bucket Operations, SAR, etc.)					
TYPE/FUNCTION	PRIORITY	NAME OF PERSONNEL OR CARGO (if applicable) or instructions for tactical aircraft	MISSION START	FLY FROM	FLY TO
ATGS		Provide coverage as smoke or weather permits.	0800	Lewiston, Idaho	Fire
Initial Attack		Support Initial Attack actions as requested.	TBD	TBD	IA
Medevac		**See Medical Plan in IAP – Review during Division Breakouts**	TBD	TBD	Fire
Water Drops		As needed and approved by Operations	0800	Helibase	Fire
PSD/UAS Operations		As approved in the PSD/UAS plan, where and when needed, determined by Operations	TBD	TBD	Fire

Green Ridge Lick Creek Fire Costs:	
Send All Aviation Costs to : 2021.greenridge.finance@firenet.gov lickcreekhelibase@gmail.com & matt.lingenfelter@usda.gov	

Flights above ground level	Wind Restrictions		
	Type 1 Helicopters <50kts / Gusts: N/A	Type 2 Helicopters <50kts / Gusts: N/A	Type 3 Helicopters <50kts / Gusts: N/A
More than 500' AGL	<40kts / Max Gust Spread: 15kts	<40 kts / Max Gust Spread: 15kts	<30kts / Max Gust Spread: 15kts
Less than 500' AGL			

Controlled Unclassified Information/Basic

Approved by: //s//: Matt Lingenfelter AOB(t)

CUI

INCIDENT RADIO COMMUNICATIONS PLAN I-205				1. INCIDENT NAME	2. DATE/TIME PREPARED	3. OPERATIONAL PERIOD DATE/TIME		
				GREEN RIDGE BR 1/N	08/15/21	8/20/21 0600 TO 2200		
4. BASIC RADIO CHANNEL UTILIZATION								
Ch #	Channel Name	Assignment	RX Frequency	RX Tone/NAC	TX Frequency	TX Tone/NAC	Mode Digital (D) Analog (A) Mixed (M)	Remarks
1	TAC 1	DIV M	168.0500	151.4	168.0500	151.4	A	BR 1 TAC
2	TAC 2	NIGHT	168.2000	151.4	168.2000	151.4	A	BR 1 TAC
3	TAC 3	NORTH	168.6000	151.4	168.6000	151.4	A	BR 1 TAC
4	TAC 4	DIV K	166.7250	151.4	166.7250	151.4	A	BR 1 TAC
5	TAC 5	LICK	166.7750	151.4	166.7750	151.4	A	BR 1 TAC
6	CMD 2	CMD 2	170.4125	131.8	165.9625	131.8	A	BR 1 CMD
7	CMD 3	CMD 3	170.0250	131.8	165.4500	131.8	A	BR 1 CMD
8	CMD 7	CMD 7	170.0000	151.4	166.6750	151.4	A	BR 1 CMD
9	CMD 8	CMD 8	170.6875	151.4	166.5750	151.4	A	BR 1 CMD
10	CMD 9	CMD 9	170.4250	151.4	168.0750	151.4	A	BR 1 CMD
11	CMD 10	CMD 10	172.0250	151.4	162.1750	151.4	A	BR 1 CMD
12	CMD 67	CMD 67	172.0750	151.4	162.2000	151.4	A	BR 1 CMD
13	A/G PRI		168.2750		168.2750		A	A/G PRIMARY
14	A/G SEC		168.5250		168.5250		A	A/G SECONDARY
15	VMED 28		155.3400		155.3400		A	AIR MEDICAL
16	AIRGUARD	EMERGENCY USE ONLY!	168.6250		168.6250	110.9	A	EMERGENCY USE ONLY!
ICS-205 Prepared By:			CLONE VERSION: GBR1816N		ALWAYS POST A HUMAN REPEATER TO RELAY MESSAGES OUT OF AREAS WHERE YOU DONT HAVE ADEQUATE COMMUNICATIONS			
			DPH: PRESS & HOLD # KEY TO CHECK VERSION.					
			KNG: LOOK AT ZONE LABEL					
JIM MIDYETT, COML								

CUI

CUI

INCIDENT RADIO COMMUNICATIONS PLAN I-205				1. INCIDENT NAME		2. DATE/TIME PREPARED		3. OPERATIONAL PERIOD DATE/TIME	
				GREEN RIDGE BR 2/S		08/15/21		8/20/21 0600 TO 2200	
4. BASIC RADIO CHANNEL UTILIZATION									
Ch #	Channel Name	Assignment	RX Frequency	RX Tone/NAC	TX Frequency	TX Tone/NAC	Mode Digital (D) Analog (A) Mixed (M)	Remarks	
1	TAC 7	DIV P	168.0500	131.8	168.0500	131.8	A	BR 2 TAC	
2	TAC 8	DIV S	168.2000	131.8	168.2000	131.8	A	BR 2 TAC	
3	TAC 9	DIV T	168.6000	131.8	168.6000	131.8	A	BR 2 TAC	
4	TAC 10	DIV W	166.7250	131.8	166.7250	131.8	A	BR 2 TAC	
5	TAC 11	E CONTIN	166.7750	131.8	166.7750	131.8	A	BR 2 TAC	
6	TAC 12	STRUCTURE	168.2500	131.8	168.2500	131.8	A	BR 2 TAC	
7	CMD 2	CMD 2	170.4125	131.8	165.9625	131.8	A	BR 2 CMD	
8	CMD 3	CMD 3	170.0250	131.8	165.4500	131.8	A	BR 2 CMD	
9	CMD 7	CMD 7	170.0000	151.4	166.6750	151.4	A	BR 2 CMD	
10	CMD 8	CMD 8	170.6875	151.4	166.5750	151.4	A	BR 2 CMD	
11	CMD 9	CMD 9	170.4250	151.4	168.0750	151.4	A	BR 2 CMD	
12	CMD 11	CMD 11	172.5500	131.8	169.4500	131.8	A	BR 2 CMD	
13	A/G PRI		168.2750		168.2750		A	A/G PRIMARY	
14	A/G SEC		168.5250		168.5250		A	A/G SECONDARY	
15	VMED 28		155.3400		155.3400		A	AIR MEDICAL	
16	AIRGUARD	EMERGENCY USE ONLY!	168.6250		168.6250	110.9	A	EMERGENCY USE ONLY!	
ICS-205 Prepared By:		JIM MIDYETT COM1		CLONE VERSION: GBR2816S		ALWAYS POST A HUMAN REPEATER TO RELAY MESSAGES OUT OF AREAS WHERE YOU DONT HAVE ADEQUATE COMMUNICATIONS			
				DPH: PRESS & HOLD # KEY TO CHECK VERSION.					
				KNG: LOOK AT ZONE LABEL					

CUI

CUI

INCIDENT RADIO COMMUNICATIONS PLAN I-205		1. INCIDENT NAME		2. DATE/TIME PREPARED		3. OPERATIONAL PERIOD DATE/TIME		
		INITIAL ATTACK		08/15/21 1800		08/20/21 0600 TO 2200		
4. BASIC RADIO CHANNEL UTILIZATION								
Ch #	Channel Name	Assignment	RX Frequency	RX Tone/NAC	TX Frequency	TX Tone/NAC	Mode Digital (D) Analog (A) Mixed (M)	Remarks
1	ST ASOTIN	LOCAL RPTR	159.4200	D365	151.2950	D365	A	6 MILES W OF ANATONE
2	COTTNWD	LOCAL RPTR	173.7750	131.8	164.8250	127.3	A	18 MILES SE OF POMEROY
3	SADDLE	LOCAL RPTR	173.7750	131.8	164.8250	146.2	A	29 MILES SE OF POMEROY
4	OREGON	LOCAL RPTR	173.7750	131.8	164.8250	167.9	A	25 MILES S OF POMEROY
5	DIAMOND	LOCAL RPTR	173.7750	131.8	164.8250	151.4	A	
6	COM	DNR TAC	151.4150	103.5	151.4150	103.5	A	
7	TAC 1	DNR TAC	151.3100	103.5	151.3100	103.5	A	
8	TAC 2	DNR TAC	151.3400	103.5	151.3400	103.5	A	
9	TAC 3	DNR TAC	151.3500	103.5	151.3500	103.5	A	
10	REDNET	TACTICAL	153.8300		153.8300		A	
11	UMF-TAC	TACTICAL	168.2375	131.8	168.2375	131.8	A	
12	A/G 1	LOCAL A/G	159.2700	103.5	159.2700	103.5	A	
13	A/G 9	LOCAL A/G	166.9125		166.9125		A	
14	A/G 44	LOCAL A/G	167.6250		167.6250		A	
15	VMED 28	A/G	155.3400		155.3400		A	
16	AIRGUARD	EMERGENCY USE ONLY!	168.6250		168.6250	110.9	A	EMERGENCY USE ONLY!
ICS-205 Prepared By:		JIM MIDYETT, COML		Current Clone Date				USE HUMAN REPEATERS TO HELP RELAY MESSAGES OUT OF LOCATIONS WHERE YOU DO NOT HAVE ADEQUATE RADIO COMMUNICATIONS

CUI

GREEN RIDGE FIRE HUMAN RESOURCE MESSAGE

"Years ago, anthropologist Margaret Mead was asked by a student what she considered to be the first sign of civilization in a culture. The student expected Mead to talk about fishhooks or clay pots or grinding stones.

But no. Mead said that the first sign of civilization in an ancient culture was a femur (thighbone) that had been broken and then healed. Mead explained that in the animal kingdom, if you break your leg, you die. You cannot run from danger, get to the river for a drink or hunt for food. You are meat for prowling beasts. No animal survives a broken leg long enough for the bone to heal.

A broken femur that has healed is evidence that someone has taken time to stay with the one who fell, has bound up the wound, has carried the person to safety and has tended the person through recovery. Helping someone else through difficulty is where civilization starts, Mead said."

We are at our best when we serve others. Be civilized.



**If there is any way I can assist you,
please do not hesitate to contact me. Your
Human Resource Specialist,**

Mike Baines, 724-678-6147

TEAM BLACK FINANCE PROCEDURES

****Green Ridge, Lick Creek, and Dry Gulch Fires****

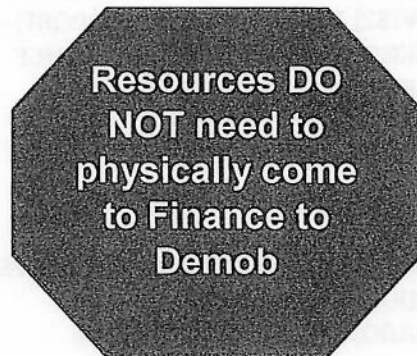
We are using a 100% electronic time submission process. Please submit time daily.
PLEASE REPORT TIME BASED ON THE FIRE YOU WORKED ON.

Resources just checking in: After checking in using the QR Code on the front of an IAP, please continue to the Finance portion and complete the Finance Check-In Form. Don't forget to submit the appropriate forms/documents electronically.

E-mail time to: 2021.greenridge.finance@firenet.gov

Please include resource type (**OVERHEAD, EQUIPMENT OR CREW**) in **subject line**. Please send electronic documents OR pictures.

If you are sending other information or questions to the finance email, please send separate email with appropriate subject line, ie: "Question on time" or "Explanation of travel."



To electronically demob from finance: Submit final CTRs and Shift Tickets to the above finance email. Include your email address and phone number. Make sure CTRs/Shift Tickets are complete and legible. **Once you have turned in your final CTRs/Shift Tickets you are released from Finance.** A final timesheet (OF288) and/or Invoice (OF286) will be emailed to you for review. Please respond with a confirmation email of accuracy. If there are errors or edits needed, contact-46 finance asap by replying to the email.

Travel safely home without having to deal with finance in person!

If you are unable to send electronic CTRs/Shift Tickets due to lack of connectivity, or incompatible devices, hard copies will be accepted. Coordinate with your supervisor for delivery to Finance. BE SURE TO INCLUDE PHONE NUMBER AND EMAIL ADDRESS. When you are ready to demob, call one of the Finance numbers below.

If you have any questions, please contact us at:

Finance 971-245-0248 or 971-727-7461; Comp/Claims 541-969-2396

TENTATIVE RELEASE DATES & TIMES

08/20/2021

CREWS

C-96 1500 (HC1) SILVER CITY HOTSHOTS IHC

EQUIPMENT

E-3 0600 (WTT2) OVERPECK LOGGING GR
E-15 0700 (WTS2) ASH KICKERS DG
E-39 0630 (AMBU) WILDERNESS MEDICS
E-81 1600 (WTS3) MT EMILY ENGINE CO
E-102 0730 (FEL2) WYEAST FORESTRY GR
E-135 0700 (WTS2) TENDER, WATER (SUPPORT) –
E-136 0800 (WTS2) WESTERN FIRE SUP -TENDER,
E-177 0700 (DOZ3) DOZER - T3 - TRAVERSE LLC –
E-266 0600 (GRD) BRUCE YOUNG LOGGING,
E-273 0600 (DOZ3) DOZER - T3 - JB
E-288 0730 (FEL1) NASH CONTRACTING LLC –
E-298 0600 (WTS2) FIRE SAIL LIMITED PARTN -
E-300 0600 (WTS2) TENDER, WATER (SUPPORT) –
E-301 0600 (WTS3) TRUMEN BOB - TENDER,
E-303 0600 (WTS3) TKO ALL HAZARDS RESOURC –
E-310 0700 (WTS2) TENDER, WATER (SUPPORT) –
E-323 0730 (SKG2) MISC - SKIDGINE, T2 - BRUCE
E-324 0800 (SKD1) MISC - SKIDDER, T1 –
E-325 0800 (SKD2) MISC - SKIDDER, T2 – ROBERT

OVERHEAD

O-606 0630 (HEQB) NAUGHTON, ANDREW JAMES
O-155 0700 (FDUL) KINNE, MIKE
O-417 1700 (RADO) CAULFIELD, KATHERINE

08/21/2021

CREWS

C-105 0600 (HC2I) NW - UMF VET CREW

EQUIPMENT

E-77 0600 (UTV) ADVENTURE MEDICS GR
E-185 0700 (RES) REMS UNIT - REMOTE ACCESS

OVERHEAD

O-402 0600 (FACL) BROWN, DAVID DANIEL
O-567 0600 (SOF2) ROBERTS, LANCE D
O-515 0600 (GISS) SINTON, DAVID T
O-421 0630 (DIVS) MONDRAGON, PAUL
O-442 0700 (FMOD) FALLER MODULE - ELLIOTT,
O-411 0700 (REAF) MALSON, AARON JESSE
O-458 1700 (HEQB) CARNEY, CHRIS G
O-435 2200 (SEC2) DAVIS, CHARLES GORDON

Demob Tips

*****Note: If you have cell phone coverage and have nothing to return to Communications or Supply, you will not physically need to come to demob.*****

AIR TRAVELERS please contact or stop by demob 4 days prior to your demob date to confirm travel plans.

After being notified by your supervisor of your tentative release date:

1. Return all supplies, radios, etc. that were checked out. If you have no items to return, you can complete finance and demob virtually. All line vehicles must complete a WEED WASH and have a post-inspection of their vehicles.
2. Submit time for all personnel and equipment to Finance per directions in IAP.
3. Once you receive confirmation from FINANCE with a copy of your OF-288 and other financial documentation, you are free to complete Step 4 and travel home.
4. Complete demob Checkout Sheet using QR code on the cover of the IAP. If unable to use, see demob. Once demob receives confirmation from Finance and your demob checkout sheet has been electronically submitted, you will be released in the system.

Demob Unit email: 2021.greenridge.demob@firenet.gov 509-520-5968 or 970-217-6579

.....

Training Specialist Message/Training Process

You do not have to wait until the last work day to complete a position task book (PTB) evaluation. You can complete the evaluation process at any time on the incident. Trainees are not required to check in with the Incident Training Specialist (TNSP). However, Geographic Area Priority Trainee Program participants are strongly encouraged to check in with the TNSP. The TNSP is available to answer questions and/or help guide both the Trainee and Evaluator through the process.

1. Incident trainees should check in early with the TNSP either in person or remotely using the QR code on the IAP cover. Within that QR code exists a training portal.
2. The trainee needs to take ownership of their training assignment. Working closely with their evaluator, identify tasks and learning opportunities that can be documented in their PTB.
3. Ensure all the information is complete and correct on the Evaluation Record and, if being recommended for certification, the PTB Verification/Certification form. Incorrect or incomplete information is a very common issue in PTBs and, all too often, delays certification of a trainee as fully qualified. Please review all information to make sure it is complete, accurate, and legible.
4. The evaluator should complete an Incident Personnel Performance Rating (ICS 225 WF) for the trainee, and submit a copy to the TNSP either in person or a picture copy.
5. Once all the documentation is completed, the trainee will need to close out with the TNSP. The trainee can: 1) stop by and close out in person with TNSP; 2) call the TNSP to go through the Exit Interview Form and discuss how the assignment went; or 3) complete the Exit Interview Form through the QR code link.

Incident Training Specialist email: 2021.greenridge.plans@firenet.gov 970-759-9610

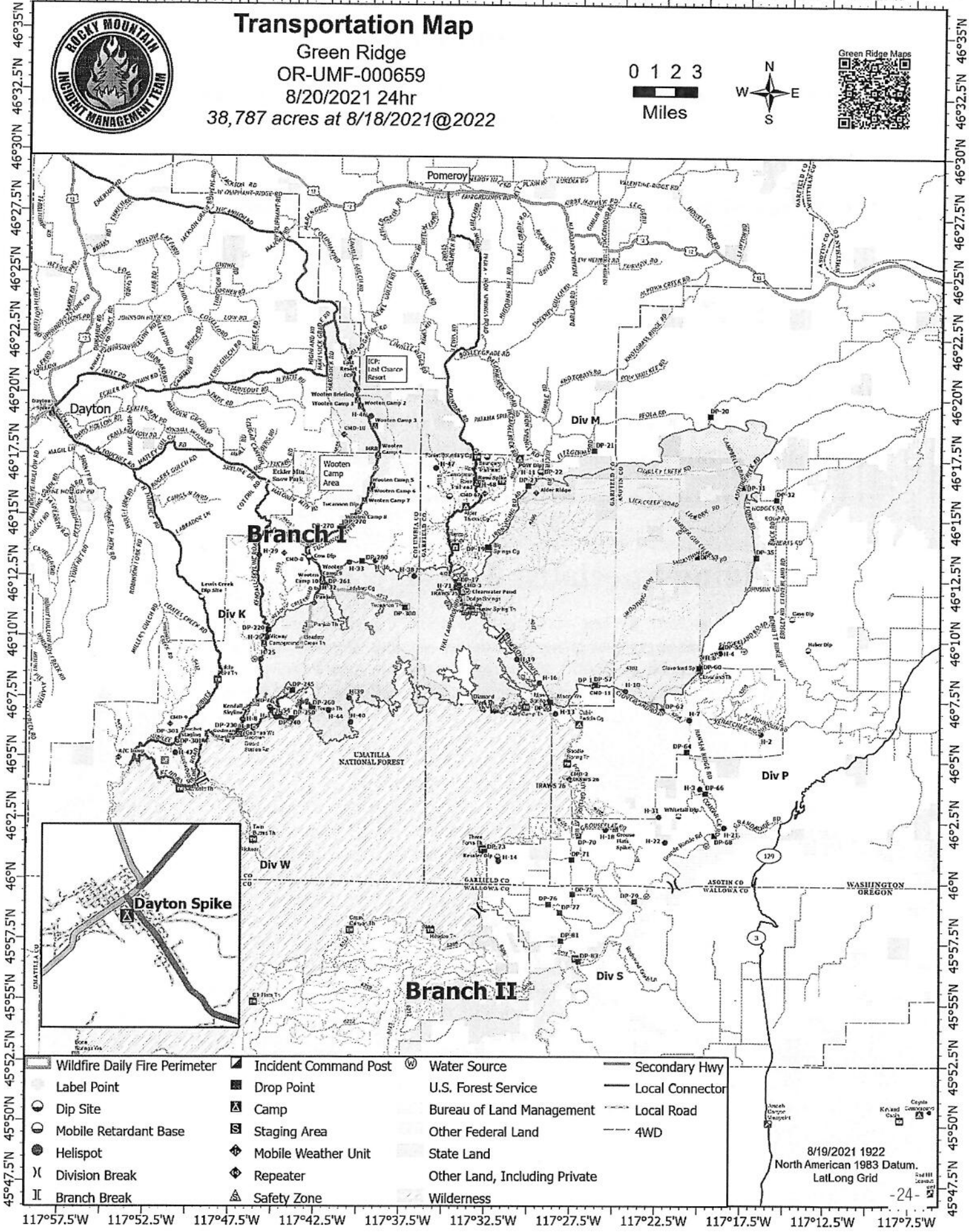
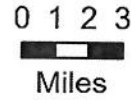
118°W 117°55'W 117°50'W 117°45'W 117°40'W 117°35'W 117°30'W 117°25'W 117°20'W 117°15'W 117°10'W



Transportation Map

Green Ridge
OR-UMF-000659
8/20/2021 24hr

38,787 acres at 8/18/2021@2022



Wildfire Daily Fire Perimeter	Incident Command Post	Water Source	Secondary Hwy
Label Point	Drop Point	U.S. Forest Service	Local Connector
Dip Site	Camp	Bureau of Land Management	Local Road
Mobile Retardant Base	Staging Area	Other Federal Land	4WD
Helispot	Mobile Weather Unit	State Land	
Division Break	Repeater	Other Land, Including Private	
Branch Break	Safety Zone	Wilderness	

8/19/2021 1922
North American 1983 Datum.
Lat/Long Grid

117°57.5'W 117°52.5'W 117°47.5'W 117°42.5'W 117°37.5'W 117°32.5'W 117°27.5'W 117°22.5'W 117°17.5'W 117°12.5'W 117°7.5'W



Rocky Mountain IMT Black



Line Supply Order

Date & Time Order was Placed	Order # (BR+DIVS + #)	Location & Time for Delivery (Division/LZ/DP/Lat Long)	Mode of delivery (Driven/Helo/DIVS to Pick up)

Order received in Communications by (name & time):

Order received in Supply by (name & time):

Order received in Transportation by (name & time):

Order received in Helibase by (name & time):

Order shipped to line unit by (name & time): (Send this sheet to the line with the order)

#	Item	Amount	Item	Amount
1.	Meals, Breakfasts	ea	30. Slingable Blivet	ea
2.	Meals, Lunches	ea	31. Folding Tank, specify size	ea
3.	Meals, Dinners	ea	32. Lightweight Pump Kit (Cache)	ea
4.	Meals, MRE's	cs	33. Hose, 1 1/2"	ea
5.	Water, 5 gal. cubie	ea	34. Hose, 1"	ea
6.	Batteries- AA	1-Flat	35. Hose, 3/4"	ea
7.	Batteries, Specify Type	pk	36. Reducer, 1 1/2" x 1"	ea
8.	Flagging, Specify type	roll	37. Reducer, 1" x 3/4"	ea
9.	Gas, raw	gal	38. Gated "Y", 1 1/2"	ea
10.	Bar Oil	gal	39. Gated "Y", 1"	ea
11.	2- cycle oil, chainsaw (2.5 oz)	6 pk	40. Gated "Y" 3/4 "	ea
12.	Sleeping Bags	ea	41. Shut-off Valve, "	ea
13.	Gatorade	cs	42. In-line Tee, 1 1/2" x 1"	ea
14.	Tarps / Plastic	roll	43. Nozzle, 1 1/2"	ea
15.	Parachute Cord	roll	44. Nozzle, 1"	ea
16.	Tool, Shovel	ea	45. Nozzle, 3/4"	ea
17.	Too I, Pulaski	ea	46. 20 Man First Aid Kit	ea
18.	Tool, Combi	ea	47. Chainsaw Kit	ea
19.	Tool, McLeod	ea	48. Toilet Paper (96 per case)	cs
20.	Tool, Specify Type	ea	49. 1000 ft. Hose Lay Kit	ea
21.	Fusee	cs	50. Garbage Bags	bx
22.	Drip Torch	ea	51. Leadline	ea
23.	Drip Torch Mix, 5 gal.	ea	52. Spike Supply Kit	ea
24.	Coffee Kit w/propane	ea	53. Dolmar (6 per case)	ea
25.	Swivel	ea	54. Sprinkler Kit	ea
26.	Backpack Pump	ea	55. LINE Spike Supply Kit	ea
27.	Pumpkin, specify size	ea	56. Duct Tape	roll
28.	Mark 3 Pump Kit w/fuel	ea	57. House Wrap	roll
29.	2-cycle oil, high pressure pump	qt	58. Staple Gun w/ staples	ea

Team Ordering/Timeline Process:

0630 - Morning Briefing, start of crew time.
 1100 - Last call to change spike camp resource hot food location.
 1600 - DIVS to have next day's resource order ready for Planning OPS.

- All crew level orders will be placed through DIVS or Branch.
- DIVS or Branch will place all orders through Communications Unit.
- All orders will be tracked using the process found on the front of this form.

GPS Datum: NAD 83- Degrees, Decimal, Minutes (DDMM.MM)

Definitions

FOB-Forward Operating Base is a secure forward position established to strategize, design and discuss tactics, and for personnel to transfer information and meet.

Line Spike Camp-Managed by Operations at the DIVS level; mobile, short duration and self- sufficient.

Spike Camp-Supported by Logistics, listed in the IAP, numbers in camp are set by 1100, named by Plans.

Emergency Medevac- Life threatening situation requiring immediate medical attention. Handled as per IAP med plan and team SOP's. Communications to clear command channel radio traffic.

Medical Transport-Transport of less serious injury/illness managed by Operations or line Medics back to camp for evaluation and/or treatment.

1000 ft. Hose Lay Kit (Order as "#49")				Spike Supply Kit (Order as "#52")			
Quantity	NFES#	Item	Weight	Quantity	NFES#	Item	Weight
10 ea	1239	Hose 1½"	125 lbs	2 rolls	0071	Duct Tape	4 lbs
10 ea	1238	Hose 1"	84 lbs	4 rolls	0222	Fiber Tape	2lbs
20 ea	1016	Hose ¾"	25 lbs	1 case	0021	Trash Bags	21 lbs
5 ea	0231	1½" Gated "Y"	20 lbs	1 case	0465	Cups for hot liquid	18 lbs
5 ea	0259	1" Gated "Y"	13 lbs	2 ea	0070	16x24 Tent fly	40 lbs
10 ea	0904	¾" Gated "Y"	3 lbs	3 ea	0027	Water Wash Basins	2 lbs
5 ea	0010	Reducers 1½" - 1"	3 lbs	1 case		Liquid Hand Soap / pump	10 lbs
5 ea	0733	Reducers 1" - ¾"	2 lbs	18 cases	1842	MRE's	18 x 20= 360 lbs
10 ea	0738 or 0835	Ball Valve ¾"	5 lbs	48 ea	0022	Sleeping bags (dbl. bag)	48 x 5= 240 lbs
10 ea	0138	Nozzle, 1"	5 lbs	3 cases	0030	AA Batteries, 24 pkg./case	90 lbs
10 ea	0136	Nozzle ¾"	5 lbs	1 case	0240	Paper Towels	41 lbs
5 ea	0230	Tee 1½x1½x1"/valve	5 lbs	1 case	0142	Toilet Paper	44 lbs
LINE Spike Supply Kit (Order as "#55")				1 roll	0144	Plastic sheeting	45 lbs
				1 roll	0533	P-Cord	9 lbs
Quantity	NFES#	Item	Weight	Quantity	NFES#	Item	Weight
20+0H	0022	Sleeping bags	20 x 5= 100 lbs	20 ea	7443	Cubies, 5 gal. Full Potable Water	20 x 40= 800 lbs
20 ea	7443	Cubies, 5 gal Full	20x40= 800 lbs	1 box	1059	12" Bastard Files	9lbs
18 cases	1842	MRE's	18x20=360 lbs	1 ea	3444	2-cycle mix, chainsaw (6 pk 2.5 oz)	2lbs
1 sl	0533	P-Cord	9 lbs	8 gal	1880	Bar Oil	64 lbs
3 cases	0030	AA Batteries, 24 pkg./case	90 lbs	15 gal		Regular Gas	120 lbs
1 case	0021	Trash bags	21 lbs	1 can		3 lbs. can coffee	3 lbs
10 rolls	0142	Toilet paper	3 lbs	1 ea		2 1/2 gal coffee pot or 3-1 gal	10 lbs
1 roll	0144	Plastic sheeting	45 lbs	2ea	0089	Ridge pole	46 lbs
2 rolls	0222	Fiber Tape	2 lbs	12 ea	0083	Pole upright	89 lbs
1 ea	3444	2-cycle mix, chain-saw (6 pk 2.5 oz)	2 lbs	24 ea	0825	Stake Tent	24 lbs
4 gal	1880	Bar Oil	32 lbs				
15 gal		Regular Gas	120 lbs				
1 box	1059	12" Bastard Files	9 lbs				

Green Ridge COVID Protocols

1. If you are having any COVID Symptoms but not limited to example below:
 - a. Fever
 - b. Cough
 - c. Headache
 - d. Muscle aches
 - e. Sore throat
 - f. Fatigue
 - g. Diarrhea/GI
 - h. Loss of smell
 - i. Loss of taste
2. Let your immediate supervisor know.
3. Call the COVID Hotline ASAP (971-245-9407) 24/7
4. Self-isolate
5. Stay-away from people
6. Wear a Mask
7. Wait for the COVID Task Force to make recommendations.

COVID GUIDELINES

MASKS ARE REQUIRED:

BRIEFINGS.

CAN'T MAINTAIN 6FT SOCIAL DISTANCING OUTSIDE.
INDOORS.

VEHICLES. (Example: More than one person in vehicle)

MASK WEARING EXCEPTION:

ALONE IN AN ENCLOSED SPACE. (Example: One person in Vehicle)
ACTIVELY ENGAGED IN FIREFIGHTING ON THE FIRELINE.
OUTSIDE AND CAN MAINTAIN 6FT APART.
EATING OR DRINKING (6FT SOCIAL DISTANCE)



NWCG screening Tool

PLEASE CONTACT THE GREEN RIDGE COVID
HOTLINE IF YOU HAVE ANY QUESTIONS ABOUT COVID, SYMPTOMS,
AND OR *FREE TESTING*.

GREEN RIDGE COVID HOTLINE # 971-245-9407

MEDICAL PLAN (ICS 206 WF)

1. Incident/Project Name		2. Operational Period					
Lick Creek / Green Ridge Fires		08/20/2021 0600-2200					
3. Ambulance Services							
Name	Complete Address	Phone & EMS Frequency	Advanced Life Support (ALS)				
			Yes	No			
Lewiston Fire Department	1245 Idaho St. Lewiston, Idaho Id 83501	Dial 911	X				
Columbia County Fire District # 3	111 Patit Road, Dayton, WA 99328	Dial 911		X			
4. Air Ambulance Services							
Name	Phone	Type of Aircraft & Capability					
Lifeflight - Lewiston	(800)232-0911	Bell 407 – ALS, Night Vision					
Lifeflight - Walla Walla	(800)232-0911	AW 119 – ALS, Night Vision					
353JR	Contact Air Ops	AS-350B3 - Short Haul					
5. Hospitals							
Name Complete Address	Degrees Decimal Minutes DD° MM.MMM' N - Lat DD° MM.MMM' W - Long	Travel Time Air	Gnd	Phone	Helipad Yes No	Level of Care Facility	
Legacy Emanuel Medical CTR 2801North Gantenbein Avenue Portland, OR 97227	Lat: 45° 32.666' N	5 hours	2.5 hours	(503)494-7333	<input checked="" type="checkbox"/>	<input type="checkbox"/>	Level 1 Trauma Center Burn Center
	Long: 122° 40.283' W						
Sacred Heart Medical Center 101 W 8 th Avenue Spokane, WA 99204	Lat: 47° 38.933' N	2 hours	30 min	(509)474-3342	<input checked="" type="checkbox"/>	<input type="checkbox"/>	Level 2 Trauma Center
	Long: 117° 24.766' W						
St. Joseph Regional Medical CTR 415 6 th Street Lewiston, ID 83501	Lat: 46° 25.000' N	1 hour	20 min	(208)799-5799	<input checked="" type="checkbox"/>	<input type="checkbox"/>	Level 3
	Long: 117° 1.433' W						
St. Mary Medical Center 401 West Poplar Street Walla Walla, WA 99362	Lat: 46° 3.666' N	1 hour	20 min	(509)897-2500	<input checked="" type="checkbox"/>	<input type="checkbox"/>	Level 3
	Long: 118° 20.666' W						
6. Division Branch Group		Area Location Capability					
K	EMS Responders & Capability:		Medic 23 Waggoner				
	Equipment Available on Scene:		ALS, BLS, AED, Stokes Litter, SKED, UTV				
	Medical Emergency Channel:		G/G BR 1/N COMMAND , TAC 4		A/G VMED 28		
	ETA for Ambulance to Scene:						
	Approved Helispot:		H-32	H-26	H-8		
	Lat:	46° 12.372 N	46° 10.009 N	46° 06.609 N			
Long:	117° 42.478 W	117° 45.666 W	117° 47.003 W				
M/Lick	EMS Responders & Capability:		AMBO 6 Greenbaum, REM 10 Mack, EMPF Clark				
	Equipment Available on Scene:		Ambulance 4x4 truck, ALS, Cardiac Monitor, Stokes Litter, UTV				
	Medical Emergency Channel:		G/G BR 1/N COMMAND , TAC 1		A/G VMED 28		
	ETA for Ambulance to Scene:						
	Approved Helispot:		H-11	H-71	H-10		
	Lat:	46° 16.967 N	46° 12.240 N	46° 07.929 N			
Long:	117° 29.687 W	117° 34.392 W	117° 24.472 W				
P	EMS Responders & Capability:		Shared resources with other Divisions				
	Equipment Available on Scene:						
	Medical Emergency Channel:		G/G BR 2/S COMMAND , TAC 7		A/G VMED 28		
	ETA for Ambulance to Scene:						
	Approved Helispot:		H-2	H-7	H-21		
	Lat:	46° 06.146 N	46° 06.750	46° 02.294 N			
Long:	117° 16.429 W	117° 20.670	117° 18.563 W				

MEDICAL PLAN (ICS 206 WF)

S	EMS Responders & Capability:		Ambo 4 Sloat, EMPF Ontko, EMTF Matt, EMTF Brandy		
	Equipment Available on Scene:		Ambulance 4x4, ALS, BLS, Cardiac Monitor, AED		
	Medical Emergency Channel:		G/G BR 2/S COMMAND , TAC 8	A/G VMED 28	
	ETA for Ambulance to Scene:				
	Approved Helispot:		H-18	H-14	
	Lat:		46 ° 02.183 N	46 ° 00.862 N	
	Long:		117 ° 25.558 W	117 ° 31.845 W	
W	EMS Responders & Capability:		Shared resources with other Divisions		
	Equipment Available on Scene:				
	Medical Emergency Channel:		G/G BR 2/S COMMAND , TAC 10	A/G VMED 28	
	ETA for Ambulance to Scene:				
	Approved Helispot:				
	Lat:		°	°	
	Long:		°	°	
Name & Location		Remote Camp Location(s)			
ICP	EMS Responders & Capability:		AMBO 7, EMTP VanGurp		
	Equipment Available on Scene:		Ambulance 2x2 truck, BLS, AED		
	Medical Emergency Channel:		BR 1/N COMMAND	A/G VMED 28	
	ETA for Ambulance to Scene:				
	Approved Helispot:		H-46		
	Lat:		46 ° 19.169 N		
	Long:		117 ° 39.739 W		
Rose Spike	EMS Responders & Capability:		NIGHT - AMBO 6 Greenbaum		
	Equipment Available on Scene:		Ambulance 4x4 truck, ALS, Cardiac Monitor, Stokes Litter, UTV		
	Medical Emergency Channel:		G/G BR 1/N COMMAND , TAC 1	A/G VMED 28	
	ETA for Ambulance to Scene:				
	Approved Helispot:				
	Lat:		°	°	
	Long:		°	°	
Grouse Flats Spike	EMS Responders & Capability:		NIGHT - AMBO 4 Sloat		
	Equipment Available on Scene:		Ambulance 4x4, ALS, BLS, Cardiac Monitor		
	Medical Emergency Channel:		G/G BR 2/S COMMAND , TAC 8	A/G VMED 28	
	ETA for Ambulance to Scene:		H-18		
	Approved Helispot:		46 ° 02.183 N	°	
	Lat:		117 ° 25.558 W	°	
	Long:				
1. Prepared By (Medical Unit Leader)		2. Date/Time	3. Reviewed By (Safety Officer)		4. Date/Time
Lionel Van Gurp MEDL(t) Stephanie McGovern MEDL(t)		8/19/2021 1800	Rob Pelton SOF2 Pat Medina SOF2 Eric White SOF2(t)		8/19/2021 1800

MEDICAL PLAN (ICS 206 WF)

Controlled Unclassified Information//Basic

Medical Incident Report

FOR A NON-EMERGENCY INCIDENT, WORK THROUGH CHAIN OF COMMAND TO REPORT AND TRANSPORT INJURED PERSONNEL AS NECESSARY.

FOR A MEDICAL EMERGENCY: IDENTIFY ON SCENE INCIDENT COMMANDER BY NAME AND POSITION AND ANNOUNCE "MEDICAL EMERGENCY" TO INITIATE RESPONSE FROM IMT COMMUNICATIONS/DISPATCH.

Use the following items to communicate situation to communications/dispatch.

1. **CONTACT COMMUNICATIONS / DISPATCH** (Verify correct frequency prior to starting report) Ex: "Communications, Div. Alpha. Stand-by for Emergency Traffic."
2. **INCIDENT STATUS:** Provide incident summary (including number of patients) and command structure.
Ex: "Communications, I have a Red priority patient, unconscious, struck by a falling tree. Requesting air ambulance to Forest Road 1 at (Lat./Long.) This will be the Trout Meadow Medical, IC is TFLD Jones. EMT Smith is providing medical care."

Severity of Emergency / Transport Priority	<input type="checkbox"/> RED / PRIORITY 1 Life or limb threatening injury or illness. Evacuation need is IMMEDIATE <i>Ex: Unconscious, difficulty breathing, bleeding severely, 2° - 3° burns more than 4 palm sizes, heat stroke, disoriented.</i> <input type="checkbox"/> YELLOW / PRIORITY 2 Serious Injury or illness. Evacuation may be DELAYED if necessary. <i>Ex: Significant trauma, unable to walk, 2° - 3° burns not more than 1-3 palm sizes.</i> <input type="checkbox"/> GREEN / PRIORITY 3 Minor Injury or illness. Non-Emergency transport <i>Ex: Sprains, strains, minor heat-related illness.</i>	
Nature of Injury or Illness & Mechanism of Injury		Brief Summary of Injury or Illness (Ex: Unconscious, Struck by Falling Tree)
Transport Request		Air Ambulance / Short Haul/Hoist Ground Ambulance / Other
Patient Location		Descriptive Location & Lat. / Long. (WGS84)
Incident Name		Geographic Name + "Medical" (Ex: Trout Meadow Medical)
On-Scene Incident Commander		Name of on-scene IC of Incident within an Incident (Ex: TFLD Jones)
Patient Care		Name of Care Provider (Ex: EMT Smith)

3. INITIAL PATIENT ASSESSMENT: Complete this section for each patient as applicable (start with the most severe patient)

Patient Assessment: See IRPG page 106

Treatment:

4. TRANSPORT PLAN:

Evacuation Location (if different): (Descriptive Location (drop point, intersection, etc.) or Lat. / Long.) Patient's ETA to Evacuation Location:

Helispot / Extraction Site Size and Hazards:

5. ADDITIONAL RESOURCES / EQUIPMENT NEEDS:

Example: Paramedic/EMT, Crews, Immobilization Devices, AED, Oxygen, Trauma Bag, IV/Fluid(s), Splints, Rope rescue, Wheeled litter, HAZMAT, Extrication

6. COMMUNICATIONS: Identify State Air/Ground EMS Frequencies and Hospital Contacts as applicable

Function	Channel Name/Number	Receive (RX)	Tone/NAC *	Transmit (TX)	Tone/NAC *
COMMAND					
AIR-TO-GRND					
TACTICAL					

7. CONTINGENCY: *Considerations: If primary options fail, what actions can be implemented in conjunction with primary evacuation method? Be thinking ahead.*

8. ADDITIONAL INFORMATION: Updates/Changes, etc.

REMEMBER: Confirm ETA's of resources ordered. Act according to your level of training. Be Alert. Keep Calm. Think Clearly. Act Decisively. - 30 -

