

****CORRECTED****

INCIDENT ACTION PLAN

LICK CREEK/GREEN RIDGE INCIDENT

OR-UMF-000658 (Lick Creek)

OR-UMF-000659 (Green Ridge)

WA-SES-020655 (Dry Gulch)

Wednesday



Communications 24-Hour
Emergency Number:

971-727-7965

Maps, IAP, Virtual Briefing



OPERATIONAL PERIOD

8/4/2021 0600

to

8/5/2021 0600

COVID Symptoms?

Call:

(971) 245-9407

****CORRECTED****

INCIDENT OBJECTIVES (ICS 202)

1. Incident Name: LICK CREEK/GREEN RIDGE	2. Operational Period:	Date From: 8/4/2021	Date To: 8/5/2021	
		Time From: 0600	Time To: 0600	

3. Objective(s):

Strategic Objectives:

- Provide for the safety of fire fighters and the public through utilization of strategic and deliberate risk assessment processes. Ensure incident within an incident protocols are established.
- Develop and implement operational objectives based on identified values at risk and highest probability of success limiting fire spread.
- Follow established guidelines and mitigations regarding COVID and other infectious diseases.
- Enhance relationships through timely communication and active involvement with the public, stakeholders, and cooperators.
- Coordinate with the READ's to ensure natural and historical values are protected to the degree necessary.
- Maintain fiscal responsibility keeping cost commensurate with the values at risk.
- Provide initial attack response to new fire starts within the TFR boundary. Assist with initial attack efforts outside the boundary as requested.

Lick Creek Operational Objective:

- Keep fire within its currently identified perimeter.

Green Ridge Operational Objective:

- Keep fire north of the 2015 Butte Creek Burn scar along the West Butte Creek Trail to the East Butte Creek Trail to Yearling Ridge Trail to Crooked Creek Trail to Monument Ridge and along the First Creek Trail to NF 40 at Misery. Protect Little Turkey Tail Recreation residences and the Godman Guard Station.
- Keep fire east of FS road 64 to protect private property, structures, and recreation sites.
- Keep fire south of the Panjab Trailhead to Panjab Campground along the Salter Trail to the 4022 Road towards Clear Water.
- Keep fire west of NF 40 Road. Minimize suppression impacts in the Wenaha-Tucannon Wilderness using natural containment features as practical.

COVID Mitigations:

- All persons must wear a mask indoors at all times regardless of vaccination status, as well as outdoors when physical distancing cannot be maintained.
- Maintain a module as one, wash your hands and sanitize surfaces.

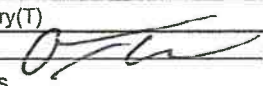
6. Incident Action Plan

<input checked="" type="checkbox"/> ICS 203	<input type="checkbox"/> ICS 215A	<input type="checkbox"/> ICS 205 A	<input type="checkbox"/>
<input checked="" type="checkbox"/> ICS 204	<input checked="" type="checkbox"/> ICS 220	<input checked="" type="checkbox"/> Training Message	<input type="checkbox"/>
<input checked="" type="checkbox"/> ICS 205	<input checked="" type="checkbox"/> Facility Maps	<input type="checkbox"/> Travel Map	<input type="checkbox"/>
<input checked="" type="checkbox"/> ICS 206	<input checked="" type="checkbox"/> Weather Forecast	<input checked="" type="checkbox"/> Demob Plan	<input type="checkbox"/> County Health Message
<input checked="" type="checkbox"/> ICS 208	<input checked="" type="checkbox"/> Fire Behavior	<input checked="" type="checkbox"/> Finance Message	<input checked="" type="checkbox"/> ICS 214

7. Prepared By: Greg White	Position/Title: PSC(T)	Signature:
8. Approved by Incident Commander: Mike Nobles		Signature:

ICS 202

ORGANIZATION ASSIGNMENT LIST (ICS 203)

1. Incident Name: LICK CREEK/GREEN RIDGE		2. Operational Period: Date From: 8/4/2021 Time From: 0600		Date To: 8/5/2021 Time To: 0600	
3. Incident Commander(s) and Command Staff:			7. Operation Section:		
IC/UC's	Mike Nobles, James Aragon(T)	Operations	John Owings, Michael Page(T)		
Deputy	Alan Taylor	Planning Ops	Jim Snow		
Safety Officer	Mark Helm, Mike Seymour(T)	Night Ops	Al Ward		
Information Officer	Alex Olow, DeLyn Sieliet(T), Stephanie Bishop(T)				
Liaison Officer	Allen Johnson, Don Smith(T)	Branch	GREEN RIDGE		
4. Agency/Organization Representatives:		Division/Group	A	Nathan Leatherman	
Agency/Organization	Name	Division/Group	G	Jason Flores	
USFS AADM	Ed Guzman	Division/Group	K/M	Kristian Litz	
USFS AREP	Bob Foxworth, Susan Piper	Division/Group	P/S		
WA DNR	Wyatt Leighton, Tom Schoenfelder	Division/Group	NIGHT	Jeff Corser(T)	
Asotin Co Fire Dist 1	Noel Hardin	Branch	LICK	Robert Szczepanek	
Columbia Co Fire 3	Jeromy Phinney	Division/Group			
Garfield Co Fire Dist 1	James Cleveland	Division/Group			
WFS	Devin McCosh	Division/Group			
WDFW - LEO	Paul Mosman	Division/Group			
Covid Liaison	Cass Monroe, Steve Medina	Division/Group			
		Branch	CONTINGENCY	Greg Overacker	
		Division/Group	NORTH	Andy Juarez	
		Division/Group	SOUTH	Andy Wordin(T)	
		Division/Group			
5. Planning Section:		Division/Group			
Chief	Steve Anderson, Greg White(T)	Division/Group			
Deputy	Ken Bates	Branch			
Resource Unit	Josh Clark, Mike Yeun(T)	Division/Group			
Situation Unit	John Hunter, Ray Rook(T)	Division/Group			
Demobilization Unit	Jan Grisedale	Division/Group			
Documentation Unit	Joey Kosiorowski(V)	Division/Group			
GISS	Rene Gonzalez, Greg Elwood, Jenny Garstang(T), Anthony Scavone(T)	Division/Group			
FBAN	Dan O'Connor	Branch			
IMET	Mary Wister	Division/Group			
Human Resources	Bill Otani	Division/Group			
Air Resources Advisor	Katy Warner	Division/Group			
Lead READ	Will Marquardt	Division/Group			
Training Specialist	Seneca Smith	Division/Group			
		Air Operations Branch		Director:	JoAnn Overacker
			Air Tactical Group Supervisor	Kevin King	
			Helibase Manager	Austin McDonald(T)	
6. Logistics Section					
Chief	Scott Ashbach				
Supply Unit	Ruben Lopez(T)				
Facilities Unit	Art Curley, Richard Wiegand(T), Wendell Simmons(T)	8. Finance/Administration Section:			
Ground Support Unit	Mark Bagley	Chief	Lisa Wilson		
Communications Unit	Mike Greene	Time Unit	Rebecca Lang(T)		
Medical Unit	Gena Fowlkes, Brandon Bennewate(T)	Cost Unit	David Dukart(V)		
ITSS	Brett Davidson, Rocio Del Arroyo(T)	Comp/Claims Unit	Pearl Cowan(V)		
Food Unit	Mike Kinne, Ed Jensen(T)	PTRC	Katie Fiely(T)(V)		
Ordering	Matt Berger, Collette Johnson	EQTR	Mary Flanary(T)		
Prepared By: Name:	Greg White	Position/Title:	PSC(T)	Signature:	
ICS 203		Date/Time:	8/3/2021 2300 hours		



Lick Creek / Green Ridge Weather Forecast



FORECAST NO: 24
FORECAST FOR: Wednesday Day and Night Shift
SHIFT DATE: 8/4/2021
DATE AND TIME ISSUED: 8/3/2021 at 2000

NAME OF FIRE: Lick Creek/Green Ridge
UNIT: OR-UMF
SIGNED: *Mary Wister* - Incident Meteorologist
541-377-9905 (cell) / mary.wister@noaa.gov

**...Fire Weather Watch in Effect Thursday for Thunderstorms...
...Storms may bring gusty and erratic winds...**

WEATHER DISCUSSION: Today will be another hot and unstable day over southeast Washington. There may be an instability thunderstorm in the late afternoon or evening. Today will be the same or a little warmer than Tuesday, and the humidity will be the same or a little lower. The probability of showers and thunderstorms increases on Thursday, and a Fire Weather Watch has been issued for thunderstorms producing lightning in dry fuels.

TODAY:

WEATHER: Mostly sunny in the morning. Partly cloudy in the afternoon. A slight chance of thunderstorms in the late afternoon and evening.

MAXIMUM TEMPERATURE: 85-90° above 5000 feet. 95-100° valley bottoms.

MINIMUM RELATIVE HUMIDITY: 18-23% all elevations.

20-FOOT RIDGETOP WINDS: Southwest 3-7 mph becoming Northwest 5-10 mph after 1200.

GREEN RIDGE CREEKS: Upslope/Upcanyon 3-8 mph.

CHANCE OF WETTING RAIN ($\geq 0.10''$): 20.

LIGHTNING ACTIVITY LEVEL: 1...possibly 2 in late afternoon.

HAINES INDEX: 5 (Moderate)

INVERSIONS/STABILITY: Low level inversion breaking around 10 AM. Unstable.

TONIGHT:

WEATHER: Partly cloudy. A slight chance of evening thunderstorms in the evening.

MINIMUM TEMPERATURE: 65-70° above 5000 feet. 59-63° valley bottoms.

MAXIMUM RELATIVE HUMIDITY: 40-45% above 500 feet. 60-70% valley bottoms.

20-FOOT RIDGETOP WINDS: Northwest 5-10 mph becoming variable 2-5 mph after 2200.

GREEN RIDGE CREEKS: Downslope/Down canyon 2-5 mph.

CHANCE OF WETTING RAIN ($\geq 0.10''$): 20%

LIGHTNING ACTIVITY LEVEL: 1...possibly 2 in the evening.

HAINES INDEX: 4 (Low)

INVERSIONS/STABILITY: Low level inversion developing. Unstable above inversion.

THURSDAY:

WEATHER: Mostly cloudy. A chance of showers or thunderstorms in the afternoon and evening.

MAXIMUM TEMPERATURE: 75-80° above 5000 feet. 88-93° valley bottoms.

MINIMUM RELATIVE HUMIDITY: 40-45% above 5000 feet. 25-30% valley bottoms.

20-FOOT RIDGETOP WINDS: Variable wind 3-5 mph becoming Northwest 5-10 mph.

GREEN RIDGE CREEKS: Upslope/Upcanyon 3-8 mph.

CHANCE OF WETTING RAIN ($\geq 0.10''$): 50%. **RAINFALL AMOUNTS:** up to 0.2 with most storms.

LIGHTNING ACTIVITY LEVEL: 3.

HAINES INDEX: 3 (Very Low)

INVERSIONS/STABILITY: Low level inversion breaking around 10 AM. Unstable.

FIRE BEHAVIOR FORECAST

FORECAST NUMBER: 9	TYPE OF FIRE: Vegetation
FIRE NAME: Lick Creek-Green Ridge Fires	OPERATIONAL PERIOD: Aug 4 th , 2021 24 HOUR
DATE ISSUED: August 3 rd , 2021	TIME ISSUED: 1930
UNIT: WA-Umatilla National Forest	SIGNED: Dan O'Connor Fire Behavior Analyst (FBAN)

WEATHER SUMMARY: See detailed Fire Weather Forecast in IAP

FUELS:

Fire areas include a range of conifer systems, from higher elevation Sub Alpine Fir and Engelmann Spruce, to Doug-Fir, Grand Fir and Lodgepole Pine under 5000', and Ponderosa Pine in the lower elevations of the Forest. Outside of the 2006 Columbia Complex and the 2015 Grizzly Complex, all forested areas have extensive dead and down and ladder fuels that will work together to elevate fire into the crowns and generate short range spotting.

The area is currently classified as 'Exceptional' drought by the US Drought Monitor, with Energy Release Components currently setting daily record highs, and approaching all time high levels. You may see some resistance to spread in brush and re-prod areas, but these veg structures are losing moisture daily. Heavy dead and down fuels will likely burn completely, holding heat and actively consuming through all hours of the day.

EXPECTED FIRE BEHAVIOR: Based on the Warmest, Driest, Windiest Conditions Forecasted

<u>Maximum Spotting Distance</u>	<u>Fuel Type/Model</u>	<u>Maximum Rate of Spread (chains/hour)</u>	<u>Maximum Flame Length (feet)</u>
½ mile (35 mph outflow 1 mile+) <u>Probability of Ignition</u> 92%	Timber litter and understory TU5/TL4	Head 10-12 ch/hr Flank 4-6 ch/hr Outflow 16-20 ch/hr	Head 8-10 ft Flank 3-5 ft Outflow 12-14 ft
	Grass/Shrub GS1	Head 15-20 ch/hr Flank 8-10 ch/hr Outflow 28 ch/hr	Head 5-8 ft Flank 3-5 ft Outflow 8-10 ft

GENERAL/Potential:

DAY: Hotter and drier today, with RH values in the teens in lower valleys. As the smoke clears out late morning anticipate an uptick in fire behavior in the heavies, which will elevate fire once again into the crowns to aid in spotting and perimeter growth. Thunderstorms in the area could bring strong, erratic winds especially where influenced by terrain.

SPECIFIC

Green Ridge: Lots of great work with crews and the drone operators to get depth all along the 46 road in Division Gulf over the past few days. Keep in mind the Lick fire had spotting outside lines a couple weeks after the fire moved through, heavies are holding heat for extended times in the drought. Any reburning or interior islands that make runs could produce spots across lines. If working in Division Alpha, keep a good heads up for fire below your location as high Haines days have generated slope runs, especially on west aspects. Heads up for any squirrely winds that could influence the backing fire above Lady Bug CG in Division Kilo/Mike.

Lick Creek: Low probability, high consequence spotting concerns remain along the western and southern flanks.

Night Division: Activity will slowly taper down from shift change across the active parts of the Green Ridge fire as the smoke settles and relative humidity recovers.

AIR OPERATIONS:

Sunrise: 0534, Civil Twilight ends: 2054

SAFETY:

Keep an eye on the brush. Fire has had trouble carrying through with higher live fuel moisture, but that's rapidly changing, especially on the drier aspects. Fire Weather Watch on tap for Thursday for lightning.



SAFETY MESSAGE



Fire fighter safety comes first on every fire, every time

We are **ALL** accountable for **SAFE** behaviors
For Day & Night Operations: **8/3/21 0600 – 8/4/21 0600**

INCIDENT: Lick Creek, Green Ridge

Date Prepared: August 3, 2021 TIME: 1500

BAD Diving habits don't go unnoticed. It is the law, to follow and obey the posted speed limits. If not followed and you are caught, you are subject to possible legal action. Is it worth the risk? Is the risk worth the outcome?

Reminders: When working in areas where mastication has been done, be cautious of tripping hazards as the masticator leaves stobs that are high and jagged and can puncture, if fallen on top of.

Brain Tickers for operation shift

- Mop Up—wear eye protection
- Its getting hotter and dryer (watch out #14). **Head's up!**
- Dedicated lookouts, watch for roll out.
 - LCES Check list (page 14 IRPG)
 - Safety Zone Guidelines (page 7 IRPG)
- Take weather observations, watch for trends share with all folks on Division.



13. ON A HILLSIDE WHERE ROLLING MATERIAL CAN IGNITE FUEL BELOW

9. Building fireline downhill with fire below.

Downhill fireline construction is hazardous in steep terrain, fast-burning fuels, or rapidly changing weather. Downhill fireline construction should not be attempted unless there is no tactical alternative. When building downhill fireline:

- Crew supervisor(s) and fireline overhead must discuss assignments prior to committing personnel. Qualified, responsible overhead individuals such as a Task Force Leader (TFLD) or an Incident Commander Type 4 (ICT4) at minimum, will stay with resources until the job is completed.
- Decisions about downhill fireline construction will be made only after proposed fireline has been scouted by supervisor(s) of involved crew(s).
- Lookouts, Communications, Escape Routes, and Safety Zones (LCES) will be coordinated for all personnel involved. This includes verifying:
 - Crew supervisors are in direct contact with lookout(s) who can see the fire.
 - Communication is established between crews.
 - Rapid access to safety zones is ensured in case fire crosses below crews.
- Direct attack will be used whenever possible; if not possible, the fireline should be completed between anchor points before being fired out.
- Fireline will not lie in or adjacent to a chute or chimney.
- Starting point will be anchored for crews building fireline down from the top.
- Bottom of the fire will be monitored; if the potential exists for the fire to spread, action will be taken to secure the fire edge.
- Before carrying fire with you, ensure it can be done safely.

Thanks, from your Safety Team!!

Safety Officers: Mike Seymour SOF2 T, Mark Helm SOF2, Shawn Shook SOFR, Ryan Grant SOFR & Shawn Lowry SOFR (T)

IRPG Green pg. 9

ASSIGNMENT LIST (ICS 204 WF)

CONTROLLED UNCLASSIFIED
INFORMATION/IMITENS

1. Incident Name:		2. Operational Period:				3. Branch		Division	
LICK CREEK/GREEN RIDGE		Date From: 08/04/21	Date To: 08/05/21	Time From: 0600	Time To: 0600	GREEN RIDGE		A	
4. Operations Personnel:		Operations Section Chief: John Owings, Michael Page(T) Branch Director: Division/Group Supervisor: Nathan Leatherman				Night Ops Al Ward Planning Ops Jim Snow Air Attack: Kevin King			
5. Resources Assigned:		** Resources Below in Bold are 12 Hour **							
Resource Identifier	ALS	LWD	Leader	Personnel	Request #	Hours	Reporting Location		
TFLD Setzer GR		8/12	Setzer	1	O-289	0600-1800	Dayton ICP		
TFLD(T) Kramer GR		8/12	Kramer	1	O-278	0600-1800	Dayton ICP		
HC2IA Prairie City GR		8/11	Cearns	22	C-46	0600-1800	Dayton ICP		
HC2 Blue Mountain GR		8/10	Perez	20	C-43	0600-1800	Dayton ICP		
HC2 MP Forestry EC		8/9	Moreno	20	C-83	0600-1800	Dayton ICP		
ENG4 Alder Creek 1 GR		8/13	Paz	3	E-150	0600-1800	Dayton ICP		
ENG4 Alder Creek 2 GR		8/15	Stewart	3	E-164	0600-1800	Dayton ICP		
ENG5 West Coast 2 GR		8/12	Miller	3	E-130	0600-1800	Dayton ICP		
ENG6 AZ E161 LC		8/10	Jones	3	E-105	0600-1800	Dayton ICP		
ENG6 AZ E461 LC		8/10	Teague	3	E-111	0600-1800	Dayton ICP		
ENG6 Rock Creek GR		8/7	Mitchell	3	E-111	0600-1800	Dayton ICP		
ENG6 Flashover GR <i>To South</i>		8/13	Gilmore	2	E-162	0600-1800	Dayton ICP		
WTS2 Del Shull DG		8/7	Andrews	1	E-47	0600-1800	Dayton ICP		
WTS2 Lovato GR		8/14	Lovato	1	E-135	0600-1800	Dayton ICP		
WTS2 Rahi GR		8/12	Rahi	1	E-136	0600-1800	Dayton ICP		
WTS3 Northern LC		8/9	Miller	2	E-64	0600-1800	Dayton ICP		
DOZ3 Pine Mountain GR		8/13	Bruland	1	E-175	0600-1800	Dayton ICP		
GRD Alvord GR		8/13	Davis	2	E-132	0600-1800	Dayton ICP		
6. Work Assignments:									
Continue to improve line where needed from DIVS A/G break East to DIVS A/S break. Prep for firing operations and communicate with OPS before firing. Take action as needed to ensure that existing structures and infrastructures do not sustain further damage. Provide for structure protection to Little Turkey Tail Recreation Residence Area.									
7. Special Instructions:									
Communicate with adjacent Divisions for holding resource needs. DIVS need to identify equipment to be sent in an event of an IA with TFR. Operations will consider and identify closest resources to respond to new incident. Please ensure 3/32" fish screens are used at all draft sites in Punjab Creek, Touchet, and Tucannon Rivers. Resources to return to Dayton ICP at end of shift.									
8. Communications									
Name	Ch	Function	Rx Freq	Rx Tone	Tx Freq	Tx Tone	Notes		
SEE ICS 205 COMM PLAN									
9. Prepared by: Name:									
Josh Clark, Mike Yeun(T)			RESL			Signature: <i>Michael Yeun</i>			
ICS 204		Date/Time: 8/3/2021		2200		Personnel Count: 92			

ASSIGNMENT LIST (ICS 204 WF)

CONTROLLED UNCLASSIFIED
INFORMATION/BASIC

1. Incident Name:	2. Operational Period:	3. Branch	Division
LICK CREEK/GREEN RIDGE	Date From: 08/04/21 Date To: 08/05/21 Time From: 0600 Time To: 0600	GREEN RIDGE	G
4. Operations Personnel:		Page 1 of 1	Golf

Operations Section Chief: John Owings, Michael Page(T) Branch Director: Division/Group Supervisor: Jason Flores	Night Ops: Al Ward Planning Ops: Jim Snow Air Attack: Kevin King
---	---

5. Resources Assigned:		** Resources Below in Bold are 12 Hour **					
Resource Identifier	ALS	LWD	Leader	Personnel	Request #	Hours	Reporting Location
TFLD Jones GR		8/5	Jones	1	O-147	0600-1800	Dayton ICP
TFLD(T) Vickery GR		8/9	Vickery	1	O-223	0600-1800	Dayton ICP
HC1 Lakeview IHC GR		8/6	Blofsky	24	C-29	0600-1800	Dayton ICP
HC2 Mosqueda Ref GR		8/10	Equihua	20	C-45	0600-1800	Dayton ICP
WFM2 Galice LC		8/4	Galice	10	O-246	0600-1800	Dayton ICP
ENG3 Buckskin GR		8/8	Weatherford	4	E-108	0600-1800	Dayton ICP
ENG4 Hi Country GR		8/12	Burnette	3	E-127	0600-1800	Dayton ICP
ENG4 Lone Wolf Wildfire GR		8/12	Flegel	3	E-129	0600-1800	Dayton ICP
WTT2 Christman Trucking GR		8/13	Blazek	1	E-2	0600-1800	Dayton ICP
WTT2 Overpeck GR		8/5	Gatens MILTON	1	E-3	0600-1800	Dayton ICP
WTS2 Panther DG		8/5	Davis	1	E-45	0600-1800	Dayton ICP
FMOD United Fallers 1 GR		8/4	Akers	2	O-164	0600-1800	Dayton ICP
SOF2 Helm GR		8/7	Helm	1	O-217	0600-1800	Dayton ICP
EMPF Fischer/Forsythe GR		8/7	Fischer/Forsythe	2	E-77	0600-1800	Dayton ICP
EMTF Holborn GR		8/17	Holborn	1	O-281	0600-1800	Dayton ICP

6. Work Assignments:
 Patrol and mop up spot fire 100%.
 Continue to conduct firing operations when conditions allow and communicate with Operations before firing.
 Continue to improve where needed on 46 Road North of Godman Staging to DP-220 DIVS G/K break.
 Prep for firing operations transition with Night Ops.

7. Special Instructions:
 Communicate with adjacent Divisions for holding resource needs.
 DIVS need to identify equipment to be sent in an event of an IA with TFR.
 Operations will consider and identify closest resources to respond to new incident.
 Please ensure 3/32" fish screens are used at all draft sites in Punjab Creek, Touchet, and Tucannon Rivers.
 Resources to return to Dayton ICP at end of shift.

8. Communications

Name	Ch	Function	Rx Freq	Rx Tone	Tx Freq	Tx Tone	Notes
SEE ICS 205 COMM PLAN							

9. Prepared by: Name: Josh Clark, Mike Yeun(T) RESL

Signature:

ICS 204 Date/Time: 8/3/2021 2200 Personnel Count: 75

ASSIGNMENT LIST (ICS 204 WF)

CONTROLLED UNCLASSIFIED
INFORMATION//BASIC

1. Incident Name:	2. Operational Period:	3. Branch	Division
LICK CREEK/GREEN RIDGE	Date From: 08/04/21 Date To: 08/05/21 Time From: 0600 Time To: 0600	GREEN RIDGE	NIGHT


4. Operations Personnel:		Page 1 of 1
Operations Section Chief: John Owings, Michael Page(T)	Night Ops: Al Ward	
Branch Director:	Planning Ops: Jim Snow	
Division/Group Supervisor: Jeff Corser(T)	Air Attack: Kevin King	

5. Resources Assigned:	** Resources Below in Bold are 12 Hour **							
Resource Identifier	ALS	LWD	Leader	Personnel	Request #	Hours	Reporting Location	
ENG4 Inbound E18 GR		8/14	Navarro	3	E-161	1800-0600	Dayton ICP	
ENG4 Utting Const GR		8/14	Bailey	3	E-165	1800-0600	Dayton ICP	
ENG4 GE Forestry GR		8/14	Aguilar	3	E-166	1800-0600	Dayton ICP	
ENG5 Iron Triangle GR		8/12	Carter	3	E-163	1800-0600	Dayton ICP	
ENG5 Methow River GR		8/14	Hernandez	3	E-159	1800-0600	Dayton ICP	
ENG6 Eye of the Eagle GR		8/13	Gillian	2	E-147	1800-0600	Dayton ICP	
ENG6 ONF E619 GR		8/13	Bell	3	E-148	1800-0600	Dayton ICP	
ENG6 Osprey Wildfire GR		8/12	Roe	3	E-149	1800-0600	Dayton ICP	
ENG6 Timbermans Inbound GR		8/13	Thompson	3	E-151	1800-0600	Dayton ICP	
ENG6 Fountain Fire GR		8/9	Orta	3	E-153	1800-0600	Dayton ICP	
ENG6 Fort Pierre E58 GR		8/8	Odden	3	E-158	1800-0600	Dayton ICP	
WTS2 Dahl-Bredine GR		8/13	Dahl-Bredine	1	E-133	1800-0600	Dayton ICP	
WTS2 Black Range GR		8/14	Sallee	1	E-134	1800-0600	Dayton ICP	
DOZ3 Mortimore 1 GR		8/13	Mortimore	2	E-176	1800-0600	Dayton ICP	
DOZ3 Mortimore 2 GR		8/13	Jaeger	2	E-180	1800-0600	Dayton ICP	
Ambulance 4 DG		8/8	Day/Dulin	2	E-61	1800-0600	Dayton ICP	

6. Work Assignments:
 Patrol and improve line where needed.
 Prep for firing operations transition from night to day operations.
 Take action as needed to ensure that existing structures and infrastructures do not sustain further damage.
 Provide for structure protection to Little Turkey Tail Recreation Residence Area.

7. Special Instructions:
 Communicate with Operations on scouting needs.
 Please make sure 3/32" fish screens are used at all draft sites in Punjab Creek, Touchet, and Tucannon Rivers.
 Resources to return to Dayton ICP at end of shift.

Name	Ch	Function	Rx Freq	Rx Tone	Tx Freq	Tx Tone	Notes
SEE ICS 205 COMM PLAN							

9. Prepared by: Name: Josh Clark, Mike Yeun(T) RESL Signature: 

Personnel Count: 40

ICS 204

Date/Time: 8/3/2021 2200

ASSIGNMENT LIST (ICS 204 WF)

CONTROLLED UNCLASSIFIED
INFORMATION/BASIC

1. Incident Name: LICK CREEK/GREEN RIDGE	2. Operational Period: Date From: 08/04/21 Date To: 08/05/21 Time From: 0600 Time To: 0600	3. Branch LICK
---	---	-------------------------------------

4. Operations Personnel:		Page 1 of 2
Operations Section Chief: John Owings, Michael Page(T) Branch Director: Robert Szczepanek Division/Group Supervisor:	Night Ops Al Ward Planning Ops Jim Snow Air Attack: Kevin King	

5. Resources Assigned:	** Resources Below in Bold are 12 Hour **						
Resource Identifier	ALS	LWD	Leader	Personnel	Request #	Hours	Reporting Location
STEN Cwiak GR		8/14	Cwiak	1	O-300	0600-1800	Wooten Camp
TFLD(T) Walters GR		8/16	Walters	1	O-329	0600-1800	Wooten Camp
ENG3 SNF E313 GR		8/9	Holland	5	E-157	0600-1800	Wooten Camp
ENG4 Rattlesnake DG		8/6	Worford	3	E-26	0600-1800	Wooten Camp
ENG4 Fire Control DG		8/8	Fechs	3	E-51	0600-1800	Wooten Camp
ENG4 Flashback Fire GR		8/12	Ribich	3	E-131	0600-1800	Wooten Camp
ENG4 JD Forestry GR		8/5	Lopez	3	E-156	0600-1800	Wooten Camp
ENG4 Thunderbold GR		8/13	Grant	3	E-160	0600-1800	Wooten Camp
ENG6 Peoples Valley GR		8/8	Hernandez	3	E-110	0600-1800	Wooten Camp
ENG6 Late Summers 1 GR		8/13	Baker	3	E-152	0600-1800	Wooten Camp
WTS2 Ash Kickers DG		8/14	Puckett	1	E-15	0600-1800	Wooten Camp
WTS2 Minam River DG		8/5	Henderson	1	E-40	0600-1800	Wooten Camp
WTT2 Swanson DG/DNR*		8/8	Wilson	1	E-78	0600-1800	Wooten Camp
DOZ3 Traverse GR		8/13	Wilcox	2	E-177	0600-1800	Wooten Camp
DOZ3 Swanson Log DG/DNR*		8/8	Smith	2	E-69	0600-1800	Wooten Camp

6. Work Assignments:
 Patrol and Mop-up as needed to secure fire's edge.
 Take action on spot fires where safe.

7. Special Instructions:
 Please backhaul trash and assist in repairing any fences that are cut.
 DIVS need to identify equipment to be sent in an event of an IA with TFR. Ops will identify closest resources to respond to new incident.
 Wooten Camp to provide Lick Branch resources with meals, showers, and sleeping area. Maintain crew spacing.
 Please make sure 3/32" fish screens are used at all draft sites in Punjab Creek, Touchet, and Tucannon Rivers.
 Operational briefing to be broadcasted at Wooten Camp at 0600. See IAP for details.

8. Communications

Name	Ch	Function	Rx Freq	Rx Tone	Tx Freq	Tx Tone	Notes
SEE ICS 205 COMM PLAN							

9. Prepared by: Name:	Josh Clark, Mike Yeun(T)	RESL	Signature:
------------------------------	--------------------------	------	------------

ICS 204	Date/Time: 8/3/2021 2200	Personnel Count: 35
---------	--------------------------	---------------------

ASSIGNMENT LIST (ICS 204 WF)

CONTROLLED UNCLASSIFIED
INFORMATION//BASIC

1. Incident Name: LICK CREEK/GREEN RIDGE	2. Operational Period: Date From: 08/04/21 Date To: 08/05/21 Time From: 0600 Time To: 0600	3. Branch Division CONTINGENCY NORTH
---	---	---

Page 1 of 1

4. Operations Personnel:	
Operations Section Chief: John Owings, Michael Page(T) Branch Director: Greg Overacker Division/Group Supervisor: Andy Juarez	Night Ops: Al Ward Planning Ops: Jim Snow Air Attack: Kevin King

5. Resources Assigned:	** Resources Below in Bold are 12 Hour **							
Resource Identifier	ALS	LWD	Leader	Personnel	Request #	Hours	Reporting Location	
TFLD White GR		8/4	White	1	O-161	0600-1800	Wooten Camp	
TFLD(T) Lennox GR		8/9	Lennox	1	O-224	0600-1800	Wooten Camp	
WTS2 MVP Team DG		8/16	Konrad	1	E-48	0600-1800	Wooten Camp	
WTS2 Green Mountain GR		8/17	Stevens	1	E-168	0600-1800	Wooten Camp	
WTS2 Hek Jones GR		8/14	Long	1	E-171	0600-1800	Wooten Camp	
DOZ2 Overpeck GR		8/4	Overpeck	2	E-4	0600-1800	Wooten Camp	
DOZ3 Bruce Young GR		8/6	Johnson	2	E-85	0600-1800	Wooten Camp	
EXCA Henderson Log 2 DG/DNR*		8/6	West	1	E-87	0600-1800	Wooten Camp	
FMOD United Fallers 2 GR		8/4	Akers	2	O-165	0600-1800	Wooten Camp	
FEL2 Henderson Log 1 DG/DNR*		8/8	Lewis	1	E-85	0600-1800	Wooten Camp	
READ Marquardt LC		8/5	Marquardt	1	O-212	0600-1800	Wooten Camp	
READ Clark GR		8/14	Clark	1	O-259	0600-1800	Wooten Camp	
READ (T) Allen GR		8/16	Allen	1	O-379	0600-1800	Wooten Camp	

6. Work Assignments:
 Continue to gather intel on structures north of the fire.
 Improve any contingency lines where needed.

7. Special Instructions:
 DIVS need to identify equipment to be sent in an event of an IA with TFR. Ops will identify closest resources to respond to new incident.
 Wooten Camp to provide Contingency North resources with meals, showers, and sleeping area. Maintain crew spacing.
 Please make sure 3/32" fish screens are used at all draft sites in Punjab Creek, Touchet, and Tucannon Rivers.
 Operational briefing to be broadcasted at Wooten Camp at 0600. See IAP for details.

8. Communications

Name	Ch	Function	Rx Freq	Rx Tone	Tx Freq	Tx Tone	Notes
SEE ICS 205 COMM PLAN							


9. Prepared by: Name: Josh Clark, Mike Yeun(T) RESL

Signature:

ICS 204 Date/Time: 8/3/2021 2200 Personnel Count: 16

INCIDENT RADIO COMMUNICATIONS PLAN (ICS 205)

Controlled Unclassified Information//Basic

1. Incident Name: LICK CREEK		2. Date/Time Prepared: Date: 08/03/2021 Time: 2004		3. Operational Period: 8/04/21 0600- 8/05/21 0600		Date/Time To: 08/05/2021 0600	THU			
4. Basic Radio Channel Use:										
Zone Group	Ch #	Function	Channel Name/Trunked Radio System Tailgroup	Assignment	RX Freq	RX Tone/NAC	TX Freq	TX Tone/NAC	Mode (A, D, or M)	Remarks
LICK CREEK	1	COMMAND	CMD 1	OUT OF SERVICE					A	Removed from Service. Unavailable for use.
LICK CREEK	2	COMMAND	CMD 2	COMMAND	170.4125N	131.8	165.9625N	131.8	A	ON PINKHAM BUTTE LINKED Green Ridge
LICK CREEK	3	COMMAND	CMD 3	COMMAND	170.0250N	131.8	165.4500N	131.8	A	CLEARWATER LOOKOUT Linked to Green Ridge
LICK CREEK	4	COMMAND	CMD 4	OUT OF SERVICE					A	
LICK CREEK	5	TACTICAL	TAC 5	LICK BRANCH	168.0500N	131.8	168.0500N	131.8	A	
LICK CREEK	6	TACTICAL	TAC 6	UNASSIGNED	168.6000N	131.8	168.6000N	131.8	A	
LICK CREEK	7	TACTICAL	TAC 7	UNASSIGNED	166.7250N	131.8	166.7250N	131.8	A	
LICK CREEK	8	TACTICAL	TAC 8	UNASSIGNED	166.7750N	131.8	166.7750N	131.8	A	
LICK CREEK	9	TACTICAL	TAC 9	UNASSIGNED	168.2500N	131.8	168.2500N	131.8	A	
LICK CREEK	10	TACTICAL	TAC 10	UNASSIGNED	168.2000N	131.8	168.2000N	131.8	A	
LICK CREEK	11	COMMAND	CMD 11	COMMAND	169.4500N	131.8	172.5500N	131.8	A	LOCATED NEAR DP57
LICK CREEK	12	COMMAND	COTTWD	LOCAL RPTR	173.7750N	131.8	164.8250N	127.3	A	LOCATED 18 M SE OF POMEROY
LICK CREEK	13	AIR TO GROUND	V MED28	MED A / G	155.3400N		155.3400N		A	USE WITH AIR AMBULANCE
LICK CREEK	14	AIR TO GROUND	A/G PRI	A / G	169.2000N		169.2000N		A	
LICK CREEK	15	AIR TO GROUND		UNAVAILABLE					A	REASSIGNED TO GREEN RIDGE FIRE.
LICK CREEK	16	AIR GUARD	AIRGUARD	AIR GUARD	168.6250N		168.6250N	110.9	A	Emergency Aircraft Contact
5. Special Instructions:										
6. Prepared By				Name: MIKE GREENE		Signature: 		Date/Time: 08/03/2021 2004		
ICS 205				IAP Page						

INCIDENT RADIO COMMUNICATIONS PLAN (ICS 205)

Controlled Unclassified Information//Basic


1. Incident Name: GREEN RIDGE	2. Date/Time Prepared: 08/03/2021 Date: 08/03/2021 Time: 2004	3. Operational Period: 8/04/21 0600- 8/05/21 0600	Date/Time To: 08/05/2021 0600 WED THU
--------------------------------------	--	--	---

4. Basic Radio Channel Use:															
Zone Group	Ch #	Function	Channel Name/Trunked Radio System Talkgroup	Assignment	RX Freq	RX Tone/NAC	TX Freq	TX Tone/NAC	Mode (A,D, or M)	Remarks					
GREENRI DGE	1	TACTICAL	BRII TAC 1	DIV K / M	168.0500N	151.4	168.0500N	151.4	A						
GREENRI DGE	2	TACTICAL	BRII TAC 2	DIV A	168.6000N	151.4	168.6000N	151.4	A						
GREENRI DGE	3	TACTICAL	BRII TAC 3	CONTINGENCY	166.7250N	151.4	166.7250N	151.4	A						
GREENRI DGE	4	TACTICAL	BRII TAC 4	DIV G	166.7750N	151.4	166.7750N	151.4	A						
GREENRI DGE	5	TACTICAL	BRII TAC 5	UNASSIGNED	168.2500N	151.4	168.2500N	151.4	A						
GREENRI DGE	6	TACTICAL	BRII TAC 6	DIV NIGHT	168.2000N	151.4	168.2000N	151.4	A						
GREENRI DGE	7	COMMAND	BRII CMD 7	COMMAND	170.0000N	151.4	166.6750N	151.4	A	LITTLE TURKEY TAIL LINKED TO CMD 8 & 9					
GREENRI DGE	8	COMMAND	BRII CMD 8	COMMAND	170.6875N	151.4	166.5750N	151.4	A	TALLOW FLATS LINKED TO CMD 7 & 9					
GREENRI DGE	9	COMMAND	BRII CMD 9	COMMAND	170.4250N	151.4	168.0750N	151.4	A	CHASE MTN LINKED TO CMD 7 & 8					
GREENRI DGE	10	COMMAND	BRII CMD 10	COMMAND	172.0250N	151.4	162.1750N	151.4	A	HOPKINS RIDGE LINK 7, 8, & 9					
GREENRI DGE	11	COMMAND	ICP LINK	COMMAND	172.0750N	151.4	162.2000N	151.4	A	LINK ICP USE ONLY					
GREENRI DGE	12	AIR TO GROUND	VMED 28	MEDICAL A/G	155.3400N		155.3400N		A	A/G USE WITH AIR AMBULANCE					
GREENRI DGE	13	AIR TO GROUND	A/G LOGISTICS		167.0750N		167.0750N		A	SLING LOADS AND TROOP SHUTTLES					
GREENRI DGE	14	AIR TO GROUND	A/G PRIMARY		168.2750N		168.2750N		A						
GREENRI DGE	15	AIR TO GROUND	A/G SECONDARY		168.5250N		168.5250N		A						
GREENRI DGE	16	AIR GUARD	AIR GUARD		168.6250N		168.6250N	110.9	A	USE FOR AIRCRAFT EMERGENCY CONTACT					

5. Special Instructions:	
Name: MIKE GREENE	Signature:
(Communications Unit Leader)	Date/Time: 08/03/2021 2004
ICS 205	IAP Page

INCIDENT RADIO COMMUNICATIONS PLAN (ICS 205)

Controlled Unclassified Information//Basic

1. Incident Name: GREEN RIDGE / LICK CREEK IA'S		2. Date/Time Prepared: Date: 08/03/2021 Time: 2004		3. Operational Period: 8/04/21 0600 - 8/05/21 0600		Date/Time To: 08/05/2021 0600		THU		
4. Basic Radio Channel Use:										
Zone Group	Ch #	Function	Channel Name/Trunked Radio System Talkgroup	Assignment	RX Freq	RX Tone/NAC	TX Freq	TX Tone/NAC	Mode (A, D, or M)	Remarks
IA	1	COMMAND	ST ASOTIN	LOCAL RPTR	159.4200N	D365	151.2950N	D365	A	6 MILES W OF ANATONE
IA	2	COMMAND	COTTNWD	LOCAL RPTR	173.7750N	131.8	164.8250N	127.3	A	18 MILES SE OF POMEROY
IA	3	COMMAND	SADDLE	LOCAL RPTR	173.7750N	131.8	164.8250N	146.2	A	29 MILES SE OF POMEROY
IA	4	COMMAND	OREGON	LOCAL RPTR	173.7750N	131.8	164.8250N	167.9	A	25 MILES S OF POMEROY
IA	5	COMMAND	DIAMOND	LOCAL RPTR	173.7750N	131.8	164.8250N	151.4	A	
IA	6	TACTICAL	DNR COM	TACTICAL	151.4150N	103.5	151.4150N	103.5	A	
IA	7	TACTICAL	DNR TAC1	TACTICAL	151.3100N	103.5	151.3100N	103.5	A	
IA	8	TACTICAL	DNR TAC2	TACTICAL	151.3400N	103.5	151.3400N	103.5	A	
IA	9	TACTICAL	DNR TAC3	TACTICAL	151.3500N	103.5	151.3500N	103.5	A	
IA	10	TACTICAL	REDNET	TACTICAL	153.8300N		153.8300N		A	
IA	11	TACTICAL	UMF-TAC	TACTICAL	168.2375N	131.8	168.2375N	131.8	A	
IA	12	AIR TO GROUND	DNR A/G 1	LOCAL A/G	159.2700N	103.5	159.2700N	103.5	A	
IA	13	AIR TO GROUND	A/G 9	LOCAL A/G	166.9125N		166.9125N		A	
IA	14	AIR TO GROUND	A/G 44	LOCAL A/G	167.6250N		167.6250N		A	
IA	15	AIR TO GROUND	VMED28	MEDICAL A/G	155.3400N		155.3400N		A	
IA	16	AIR GUARD	AIR GUARD	AIR GUARD	168.6250N		168.6250N		A	Emergency Aircraft Contact
5. Special Instructions:										
6. Prepared By				Name: MIKE GREENE		Signature: 		Date/Time: 08/03/2021 2004		
ICS 205				IAP Page		Controlled Unclassified Information//Basic				

AIR OPERATIONS SUMMARY 220		Prepared By: JoAnn Overacker	Prepared: 08/03/2021	Prepared Time: 1900 hrs.
1. INCIDENT NAME: LICK CREEK/GREEN RIDGE		2. OPERATIONAL PERIOD 08/04/2021	START TIME: 0730	END TIME: 2130
			SUNRISE: 0535	SUNSET: 2022

3. REMARKS (Safety Notes, Hazards, Air Operations Special Equipment, etc.).
 PUBLIC.
 Relief Air Attack to be requested through dispatch.
 **If 353RJ is needed for aerial ignition, the PSD trailer and fuel truck will be relocated to H-25 for the day.
 *** Monitor adverse weather, have a plan in place if aircraft cannot fly ***

4. MEDICAL RESPONSE AIRCRAFT:

1) Lifeflight: 911 2) Shorthaul: Walla Walla H-353JR (As-350B3) 3) Shorthaul: McCall AS-350B3	5. TFR: Lick Creek 1/2359 119.5250 Elbow Creek 1/1754 134.575 Helibase: Walla Walla Regional Airport (ALW) N46°05.552 x W118°17.045
---	---

* Follow Medical Plan ICS-206 *

6. PERSONNEL	NAME	PHONE #	7. FREQUENCIES	AM	FM	8. FIXED-WING Avail/ Type/ Make-Model/ N#/ Base
ASGSt	JoAnn Overacker	209-559-1617	A/A Primary TFR	119.5250		ATGS Platforms: AA N400DS Helibase email lickcreekhelibase@gmail.com
			A/A Secondary	123.7000		
ATGS (ODS)	Kevin King	970-556-9451	A/G Branch 1 Primary		169.2000	
Awrd6e			A/G Branch 2 Logistics		167.0750	
HEBM Walla Walla	Arrives 8/5		A/G Branch 2 Primary		168.2750	
HEBMt Walla Walla	Austin McDonald	541-910-0584	A/G Branch 2 Secondary		168.5250	
Unmanned Romeo 322	Tim Gijilisco	541-591-6000				
	Milton Trwong	916-716-4708				
Mobile Retardant Base	Daniel Wheeler	775-962-1311	AIRGUARD		168.6250 RX/TX 110.9	
Blue Mountain Disp.	Aircraft Desk	541-963-7171	VMED 28		155.3400	

9. HELICOPTERS (Use Additional Sheets as Necessary)

FAA N#	TY	MAKE/ MODEL	BASE	START	AVAIL	REMARKS	FAA N#	TY	MAKE/ MODEL	BASE	START	AVAIL	REMARKS
187CH	1	Vertol CH-46	ALW	0830	0900	Bucket	359EV	3	AS-350B3	ALW	0830	0900	Recon, Bucket, PAX, Cargo
12CK	1	Sikorsky SH-3H	ALW	0830	0900	Bucket	353JR	3	AS-350B3	ALW	0830	0900	Recon, Bucket, PSD, PAX, Cargo
625CK	1	S-61N	ALW	0830	0900	Bucket	Unmanned Romeo 322	UAS	DJI M600		Lakeview IHC		
604CK	1	UH-60	ALW	0830	0900	Bucket							

Incident/Project Name	1. Operational Period
Lick Creek Fire / Green Ridge	Date/Time 8/04 0600 to 8/05/2021 0600

2. Ground Ambulance Services				
Name	Complete Address	Phone Contact	ALS (ADVANCED LIFE SUPPORT)	BLS (BASIC LIFE SUPPORT)
Asotin County Fire District #1	2314 Appleside Blvd. Clarkston, WA	Dial 9-1-1		Yes
Columbia FD #3	111 Patit Road Dayton, WA	Dial 9-1-1		Advance
Lewiston Fire Department	1245 Idaho St. Lewiston, ID	Dial 9-1-1	YES	

3. Air Ambulance Services		
Name	Phone / Air to Ground	Capability
Lifeflight - Lewiston	Call 9-1-1 1-800-232-0911	Rotor- NO HOIST CAPABILITIES
Lifeflight - Walla Walla	9-1-1 or 1-800-232-0911	Rotor - NO HOIST CAPABILITIES
Short Haul- McCall/Walla Walla	Contact Air Ops	Short haul capable

4. Hospitals						
Name Complete Address	GPS Datum - WGS 84 DD° MM.MMM' N - Lat DD° MM.MMM' W - Long	Travel Times AIR GRND		Phone	Helipad Yes/No	Level of Care
St. Joseph Regional 415 6 th Street Lewiston, ID	LAT: 46° 25.000' N LONG: 117° 01.460' W VHF: N/A	5 min	1.5 hr	208-799-5799	Yes Rooftop	Level II Cardiac Level II CVA Level III Trauma
Tri State Memorial 1221 Highland Ave Clarkston, WA	LAT: 46° 24.125' N LONG: 117° 03.330' W VHF: N/A	5 min	1.5 hr	509-758-4665	Yes Ground Pad	Level II Cardiac Level II CVA Level IV Trauma
Dayton Memorial 1012 S. Third Street Dayton, WA	LAT: 46° 18.749' N LONG: 117° 58.170' W VHF: N/A	5 min	1.5 hr	509-382-9351 (ER)	Yes Ground Pad	Level V Trauma
Walla Walla Providence Medical Center 401 W. Poplar Walla Walla, WA 99362	LAT: 46° 18.749' N LONG: 117° 58.170' W VHF: N/A	10 min	2 hr	509-529-7608	Yes Ground Pad	Level I Cardiac Level II CVA Level III Trauma
Legacy Emanuel Portland, OR	LAT: 45° 32.668' N LONG: 122° 40.293' W VHF: N/A	2.5 hrs	6 hrs	503-413-2200	Yes Ground Pad	Level I Trauma/Burn Center

In the event of a medical emergency Contact the Communication Unit

Follow the Medical Incident Report to provide information to communications
(pink pages 118-119 in the IRPG)

Local Medical helicopter use air to ground Channel 13 VMED 28

Out of area short haul expect an 1 ½ hour response time

If an emergency occurs in ICP Please contact Communications at 971-727-7965

5. Date: 08/03/2021	6. Prepared By (MEDL) Gena Fowlkes 	7. Reviewed By (Safety Officer) - Mike Seymour  30F2(T)
------------------------	---	--

MEDICAL PLAN (ICS 206 WF)

Controlled Unclassified Information//Basic

Medical Incident Report

FOR A NON-EMERGENCY INCIDENT, WORK THROUGH CHAIN OF COMMAND TO REPORT AND TRANSPORT INJURED PERSONNEL AS NECESSARY.

FOR A MEDICAL EMERGENCY: IDENTIFY ON SCENE INCIDENT COMMANDER BY NAME AND POSITION AND ANNOUNCE "MEDICAL EMERGENCY" TO INITIATE RESPONSE FROM IMT COMMUNICATIONS/DISPATCH.

Use the following items to communicate situation to communications/dispatch.

1. CONTACT COMMUNICATIONS / DISPATCH (Verify correct frequency prior to starting report)

Ex: "Communications, Div. Alpha. Stand-by for Emergency Traffic."

2. INCIDENT STATUS: Provide incident summary (including number of patients) and command structure.

Ex: "Communications, I have a Red priority patient, unconscious, struck by a falling tree. Requesting air ambulance to Forest Road 1 at (Lat./Long.) This will be the Trout Meadow Medical, IC is TFLD Jones. EMT Smith is providing medical care."

Severity of Emergency / Transport Priority	<input type="checkbox"/> RED / PRIORITY 1 Life or limb threatening injury or illness. Evacuation need is IMMEDIATE <i>Ex: Unconscious, difficulty breathing, bleeding severely, 2^o - 3^o burns more than 4 palm sizes, heat stroke, disoriented.</i> <input type="checkbox"/> YELLOW / PRIORITY 2 Serious Injury or illness. Evacuation may be DELAYED if necessary. <i>Ex: Significant trauma, unable to walk, 2^o - 3^o burns not more than 1-3 palm sizes.</i> <input type="checkbox"/> GREEN / PRIORITY 3 Minor Injury or illness. Non-Emergency transport <i>Ex: Sprains, strains, minor heat-related illness.</i>	
Nature of Injury or Illness & Mechanism of Injury		Brief Summary of Injury or Illness <i>(Ex: Unconscious, Struck by Falling Tree)</i>
Transport Request		Air Ambulance / Short Haul/Hoist Ground Ambulance / Other
Patient Location		Descriptive Location & Lat. / Long. (WGS84)
Incident Name		Geographic Name + "Medical" <i>(Ex: Trout Meadow Medical)</i>
On-Scene Incident Commander		Name of on-scene IC of Incident within an Incident <i>(Ex: TFLD Jones)</i>
Patient Care		Name of Care Provider <i>(Ex: EMT Smith)</i>

3. INITIAL PATIENT ASSESSMENT: Complete this section for each patient as applicable (start with the most severe patient)

Patient Assessment: See IRPG page 106

Treatment:

4. TRANSPORT PLAN:

Evacuation Location *(if different): (Descriptive Location (drop point, intersection, etc.) or Lat. / Long.)* Patient's ETA to Evacuation Location:

Helispot / Extraction Site Size and Hazards:

5. ADDITIONAL RESOURCES / EQUIPMENT NEEDS:

Example: Paramedic/EMT, Crews, Immobilization Devices, AED, Oxygen, Trauma Bag, IV/Fluid(s), Splints, Rope rescue, Wheeled litter, HAZMAT, Extrication

6. COMMUNICATIONS: Identify State Air/Ground EMS Frequencies and Hospital Contacts as applicable

Function	Channel Name/Number	Receive (RX)	Tone/NAC *	Transmit (TX)	Tone/NAC *
COMMAND					
AIR-TO-GRND					
TACTICAL					

7. CONTINGENCY: Considerations: *If primary options fail, what actions can be implemented in conjunction with primary evacuation method? Be thinking ahead.*

8. ADDITIONAL INFORMATION: *Updates/Changes, etc.*

REMEMBER: Confirm ETA's of resources ordered. Act according to your level of training. Be Alert. Keep Calm. Think Clearly. Act Decisively.

COVID GUIDELINES

MASKS ARE REQUIRED:

BRIEFINGS.

CAN'T MAINTAIN 6FT SOCIAL DISTANCING OUTSIDE.
INDOORS.

VEHICLES. (Example: More than one person in vehicle)

MASK WEARING EXCEPTION:

ALONE IN AN ENCLOSED SPACE. (Example: One person in Vehicle)

ACTIVELY ENGAGED IN FIREFIGHTING ON THE FIRELINE.

OUTSIDE AND CAN MAINTAIN 6FT APART.

EATING OR DRINKING (6FT SOCIAL DISTANCE)

Today or in the past 24 hours, have you had any of the following symptoms even if you have been vaccinated?

COUGH MORE THAN EXPECTED?

SHORTNESS OF BREATH OR DIFFICULTY BREATHING FEVER? CHILLS?

MUSCLE PAIN OUTSIDE YOUR NORMAL FOR FIREFIGHTING?

SORE THROAT?

NEW LOSS OF TASTE OR SMELL

FATIGUE OUTSIDE YOUR NORMAL FOR FIREFIGHTING? CONGESTION OR RUNNY

NOSE, OUTSIDE YOUR NORMAL FOR FIREFIGHTING?

NAUSEA OR VOMITING

DIARRHEA

****Take your temperature with a no-touch thermometer, if available****

PLEASE CONTACT THE GREEN RIDGE COVID
HOTLINE IF YOU HAVE ANY QUESTIONS ABOUT
COVID, SYMPTOMS, AND OR FREE TESTING.

GREEN RIDGE COVID HOTLINE # 971-245-9407

GREEN RIDGE FIRE FREE COVID

TESTING

1. Test is 100% voluntary. **“HIGHLY RECOMMENDED”**
2. The email address below goes straight to the Covid Task Force and is **HIPPA** (Health Insurance Portability and Accountability Act) Compliant. Also, any phone calls or texts to the Covid Hotline is following HIPPA.
3. Please email: **2021.lick.plans@firenet.gov** or call Covid Hotline: **971-245-9407** to schedule your test.
4. We can test you at ICP or Wooten.
6. The test only takes 30 minutes to get results.
7. Please check with your employer or agency if they want you to test before you Demob.
8. Try to let us know 3-days before your demob day so that we can make it as quick as possible.



Northwest MAC Group

Northwest Coordination Center
150 SW Harrison St Suite 400
Portland OR 97201
503-808-2720

August 3, 2021

To: Incident Commanders on Pacific Northwest (PNW) IMTs, IMTs Working in the Geographic Area, and all PNW Agency Administrators

From: Chuck Turley, PNW MAC Acting-Chair on Behalf of All PNW MAC Agency Executives

Subject: COVID Mitigation Expectations/Requirements

The frequency of COVID exposure and cases is increasing on our PNW wildfire incidents and within support functions. PNW MAC has reviewed the multiple guidance documents provided by CDC, Wildland Fire Medical and Public Health Advisory Team (MPHAT), and federal, state, and local entities. Beginning immediately our expectation and direction is that all PNW incidents and their support functions will implement and enforce the following.

- For resources assigned to an incident within the PNW and for our NW IMTs assigned outside the northwest, wear a mask at all times whether inside or outside, vaccinated or unvaccinated, unless you are working alone or are on the fire line. Having a medical exemption is the only exception.

This direction applies to all levels of incident operations and all aspects of an incident including but not limited to transportation to/from incident, ICPs, spike camps, helibases, tanker bases, ground support units, etc.

Thank you for your vigilance of COVID protections.

Respectfully,

Chuck Turley
PNW MAC Acting-Chair
Washington Department of Natural Resources

Date

•Bureau of Land Management
•U.S. Forest Service
•U.S. Fish and Wildlife Service
•National Park Service

•Bureau of Indian Affairs
•Washington State Fire Marshal
•Washington State Association of Fire Chiefs
•Washington State Dept. of Natural Resources

•Oregon Department of Forestry
•Oregon Fire Chiefs Association
•Oregon State Fire Marshal



Human Resource Message

Lick Creek/ Green Ridge

August 4, 2021

Remember:

Practice Mutual Respect

Be smart! Act smart!

We will all be better off!

Trainees

A Training Specialist has been set up next to Check-In at the Dayton ICP.

Please use the following QR code to register:



If you have any questions call the Training Specialist at (206) 718-3471. Phone does not accept text messages. E-mail documentation to 2021.GreenRidge@firenet.gov

Remember to get as much ink in your taskbook as possible **and** get a performance rating (ICS 225) from trainer.



Finance Message

Fire Name: Lick Creek	Fire Name: Dry Gulch	Fire Name: Green Ridge
Fire Number: OR-UMF-000658	Fire Number: WA-SES-020655	Fire Number: OR-UMF-000659
Accounting Code: P6N47M (0614) 221 – LAJ	Accounting Code: PNN45S (1522) 221 – LAG	Accounting Code: P6N5AV (0614) 221 – LSL
Email: 2021.lick.finance@firenet.gov		2021.greenridge.finance@firenet.gov
Finance Phone #'s: (971) 245-0248 or (971) 727-7461		



US Forest Service Fire, Fuels and Aviation Employees charging to B-codes, please remember to charge any overtime hours to the incident's override and P-code; B-codes are for Base 8 hours only. Payroll corrections will be required for any overtime charged incorrectly to a B-code. Thank-you.

Finance Documents Needed upon "Check In" (If Not Already Submitted):

Please email these documents or scan the QR Code below, attach & submit.			
Agency Equipment/ Crews: <ul style="list-style-type: none"> • Manifest - showing employment type (GS or WG) or AD rates if applicable 	Overhead: <ul style="list-style-type: none"> • AD/Casual Hire Form • If regular Agency please ensure "GS" or "WG" is written on your first CTR 	Contract Equipment/ Contract Crews: <ul style="list-style-type: none"> • Agreement • Manifest • Resource Order • Inspections 	Cooperator: <ul style="list-style-type: none"> • Cooperative Agreement • Resource Order

Please submit your CTR/Shift Tickets using the QR code or email address below:

Don't Forget to put your RO # on your CTR/Shift Ticket – Thank You

Lick Creek/Dry Gulch Finance Email: 2021.lick.finance@firenet.gov	Green Ridge Finance Email: 2021.greenridge.finance@firenet.gov
	
Include the Word "Time" in the Subject Line of the Email	

ICP LOGISTICS NOTES

Supply: 0530-2200

Ordering: 0600-2100

Communications: 0600-2200

Food: Breakfast: 0600

Dinner: 1700 for ICP staff & 2000 for crews

Refer Trailer: 0530-0900 1130-1330 1630-2100

Showers: 0500-1200 & 1400-2200

Laundry service: 0600-2000 24hr turn around after day 2.

Ground Support: 0600-2200

Mechanic: 0700-2200

Weed Wash: 0700-2000

Fuel: @ ICP (County Yard 415N. Guernsey Ave.) 0700-2000

@ Wooten: 0700-2000

Medical: 0700-2200

PLEASE DO:

-Note & mark the location (DIV, intersection, DP, camp, latt/long) of equipment: pumps, hose, tanks, etc. and please bring it to the attention of the DIV and ask them to report to Logistics.

-Sleep in marked sleeping areas only.

-Pick up after yourself: trash, cigarette butts, etc.

-Treat other people the way you want to be treated.

PLEASE DO NOT:

-Park in front of port-a-potties.

-Park in front of fire hydrants.

-Park in the street in front of chow distribution.

-Leave your trash near port-a-potties.....it ONLY goes in the dumpster!

DEMOB INSTRUCTIONS

Demob steps for all resources must be done in order:

Proceed to **Dayton High School**, 614 S. 3rd Street, Dayton, WA.

1. All line resources must have a post-incident inspection and complete a **Weed Wash**.
2. Turn in radios to the **Communications Unit**.
3. Turn any checked out items to the **Supply Unit**.
4. **Finance** needs you to get your final shift ticket signed by your supervisor before going to close out your time. Then take it to Finance and finalize your time.
5. **Demobilization Unit** will be your last stop. Make sure they know your travel times. If you are going to rest overnight let them know where you plan to stay.

***** FINAL TRAVEL CTR'S MUST BE SIGNED BY YOUR SUPERVISOR ON THIS INCIDENT! FINANCE CANNOT SIGN THEM FOR YOU! *****

Tentative Demob List
8/4/2021

EQUIPMENT

E-70	0700	FEL1	SWANSON LOGGING DG
E-75	0715	SKD1	SWANSON LOGGING DG

OVERHEAD

O-27	0700	ABRO	JON RAYBOURN GR
O-52	0710	EMTF	DAN SOLOMAN GR
O-65	0720	RADO	ANDREW SAWYER GR
O-142	0730	TFLD	LARRY RIEKEN GR
O-144	0740	HECM	LYNDIE MCDANIEL GR
O-146	0750	HECM	GAVIN BURNETT LC
O-155	0800	FDUL	MIKE KINNE GR

8/5/2021

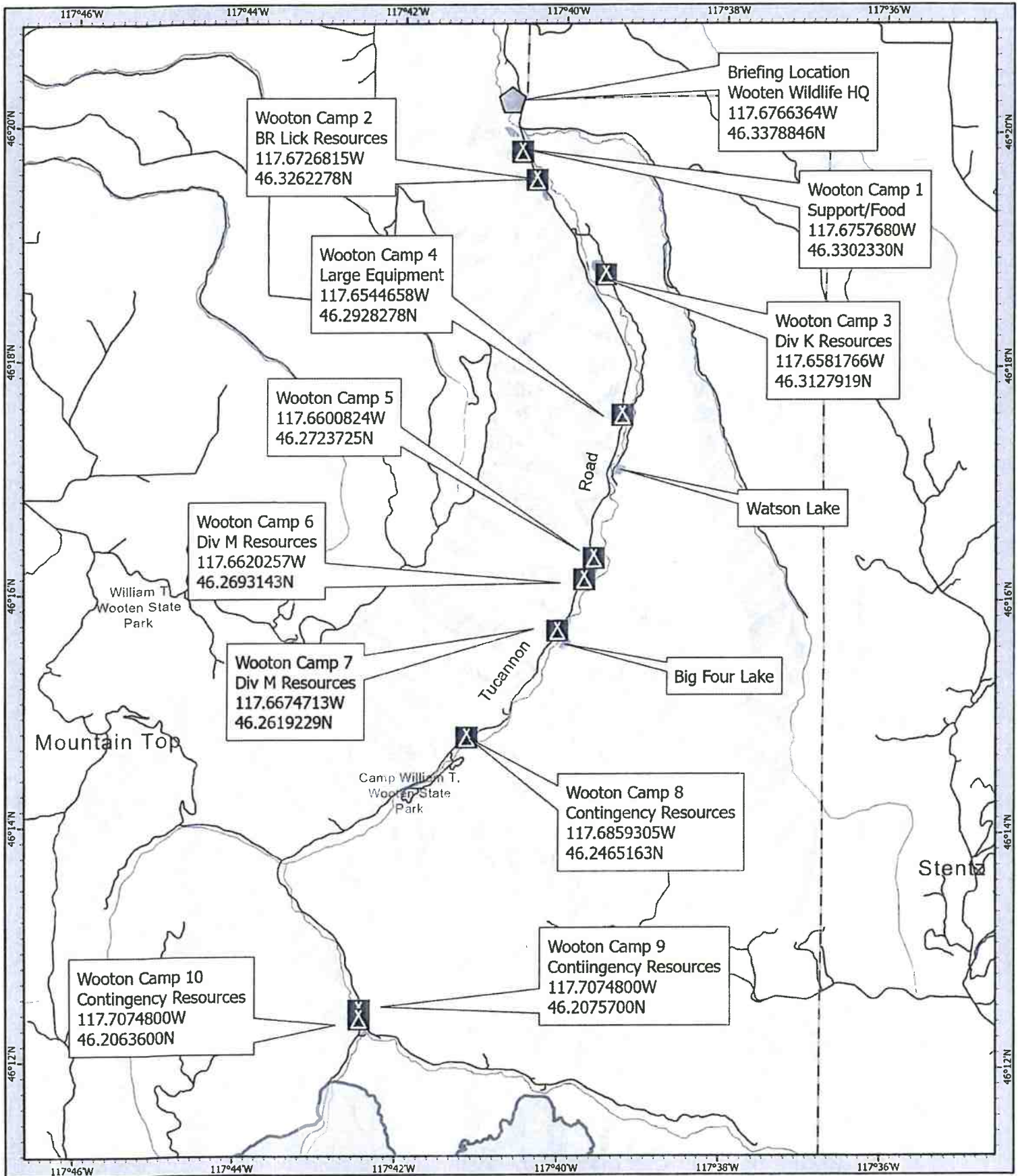
Tentative Demob List

EQUIPMENT

E-72	FEL1	SWANSON LOGGING DG
------	------	--------------------

OVERHEAD

O-164	FMOD	UNITED FALLERS GR
O-165	FMOD	UNITED FALLERS GR
O-170	SEC2	COLE SHIRLEY GR
O-171	SEC2	NATHAN WELKER GR
O-246	FMOD	GALICE FIRE MOD



- Camp
- Wildfire Daily Fire Perimeter
- Roads
- Lat/Long in Decimal Degrees

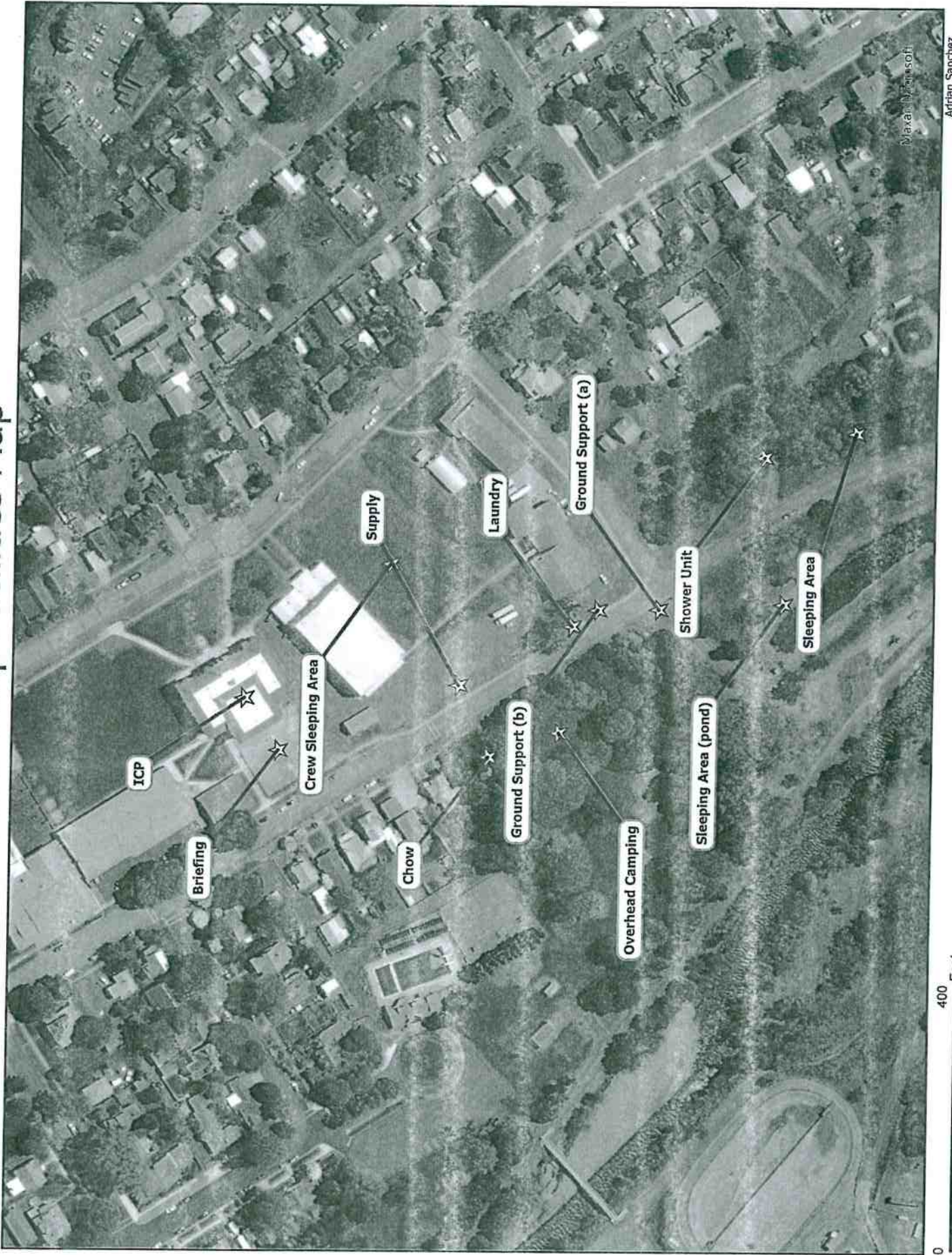
Wooten Camp Area
Green Ridge
 OR-UMF-000659

8/4/21



1:5,000 NAD83 UTM 11N
 0 0.5 1 1.5 Miles
 Prepared by CA/MT/2 B/B 8/21/21

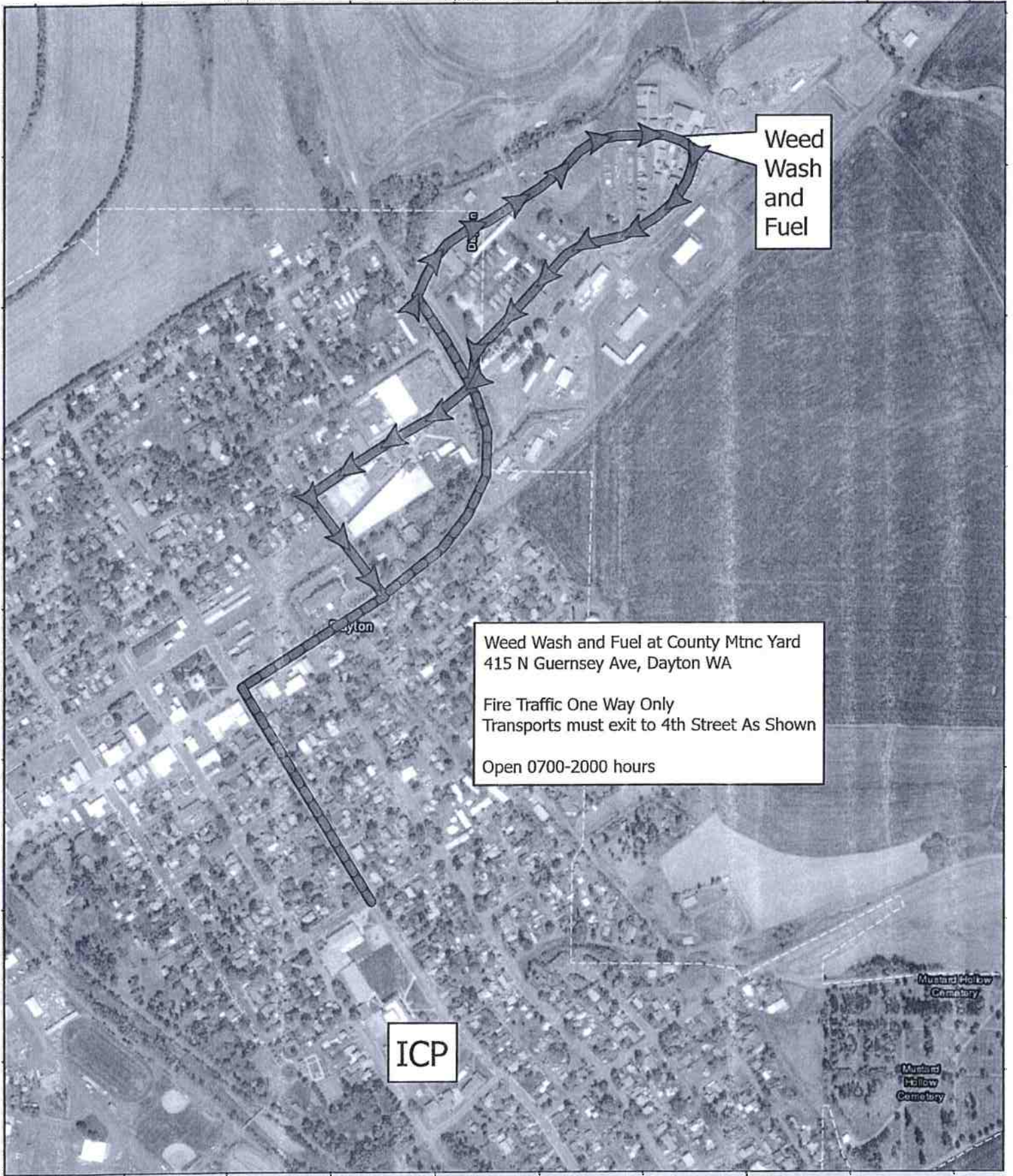
Base Camp Facilities Map



Maxar/Planet Labs

0 400 Feet

Adrian Sanchez
Updated:
07/30/2021 @ 1900



Weed Wash and Fuel

Weed Wash and Fuel at County Mtrnc Yard
 415 N Guernsey Ave, Dayton WA

Fire Traffic One Way Only
 Transports must exit to 4th Street As Shown

Open 0700-2000 hours

ICP

Mustard Hollow Cemetery
 Mustard Hollow Cemetery

117°58'W

-  One Way
-  Route

Weed Wash Map
 Green Ridge
 OR-UMF-00659



1:8,000

NA083 UTM 11N

0.25

