

Thursday

# INCIDENT ACTION PLAN

## LICK CREEK/GREEN RIDGE INCIDENT

OR-UMF-000658 (Lick Creek)

OR-UMF-000659 (Green Ridge)

WA-SES-020655 (Dry Gulch)



Communications 24-Hour  
Emergency Number:

971-727-7965

Maps, IAP, Virtual Briefing



### OPERATIONAL PERIOD

8/5/2021 0600

to

8/6/2021 0600

*COVID Symptoms?*

*Call:*

*(971) 245-9407*



# INCIDENT OBJECTIVES (ICS 202)

<b>1. Incident Name:</b> LICK CREEK/GREEN RIDGE	<b>2. Operational Period:</b>	Date From: 8/5/2021 Time From: 0600	Date To: 8/6/2021 Time To: 0600
--	-------------------------------	--	------------------------------------

**3. Objective(s):**

- Strategic Objectives:**
- Provide for the safety of fire fighters and the public through utilization of strategic and deliberate risk assessment processes. Ensure incident within an incident protocols are established.
  - Develop and implement operational objectives based on identified values at risk and highest probability of success limiting fire spread.
  - Follow established guidelines and mitigations regarding COVID and other infectious diseases.
  - Enhance relationships through timely communication and active involvement with the public, stakeholders, and cooperators.
  - Coordinate with the READ's to ensure natural and historical values are protected to the degree necessary.
  - Maintain fiscal responsibility keeping cost commensurate with the values at risk.
  - Provide initial attack response to new fire starts within the TFR boundary. Assist with initial attack efforts outside the boundary as requested.

- Lick Creek Operational Objective:**
- Keep fire within its currently identified perimeter.

- Green Ridge Operational Objective:**
- Keep fire north of the 2015 Butte Creek Burn scar along the West Butte Creek Trail to the East Butte Creek Trail to Yearling Ridge Trail to Crooked Creek Trail to Monument Ridge and along the First Creek Trail to NF 40 at Misery. Protect Little Turkey Tail Recreation residences and the Godman Guard Station.
  - Keep fire east of FS road 64 to protect private property, structures, and recreation sites.
  - Keep fire south of the Panjab Trailhead to Panjab Campground along the Salter Trail to the 4022 Road towards Clear Water.
  - Keep fire west of NF 40 Road. Minimize suppression impacts in the Wenaha-Tucannon Wilderness using natural containment features as practical.

- COVID Mitigations:**
- All persons must wear a mask indoors at all times regardless of vaccination status, as well as outdoors when physical distancing cannot be maintained.
  - Maintain a module as one, wash your hands and sanitize surfaces.

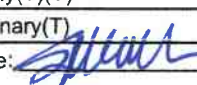
**6. Incident Action Plan**

<input checked="" type="checkbox"/> ICS 203	<input type="checkbox"/> ICS 215A	<input type="checkbox"/> ICS 205 A	<input type="checkbox"/>
<input checked="" type="checkbox"/> ICS 204	<input checked="" type="checkbox"/> ICS 220	<input checked="" type="checkbox"/> Training Message	<input type="checkbox"/>
<input checked="" type="checkbox"/> ICS 205	<input checked="" type="checkbox"/> Facility Maps	<input type="checkbox"/> Travel Map	<input type="checkbox"/>
<input checked="" type="checkbox"/> ICS 206	<input checked="" type="checkbox"/> Weather Forecast	<input checked="" type="checkbox"/> Demob Plan	<input type="checkbox"/> County Health Message
<input checked="" type="checkbox"/> ICS 208	<input checked="" type="checkbox"/> Fire Behavior	<input checked="" type="checkbox"/> Finance Message	<input checked="" type="checkbox"/> ICS 214

**7. Prepared By:** Greg White      Position/Title: PSC(T)      Signature: \_\_\_\_\_

**8. Approved by Incident Commander:** Mike Nobles      Signature: \_\_\_\_\_

## ORGANIZATION ASSIGNMENT LIST (ICS 203)

<b>1. Incident Name:</b> LICK CREEK/GREEN RIDGE		<b>2. Operational Period: Date From:</b> 8/5/2021 Time From: 0600		<b>Date To:</b> 8/6/2021 <b>Time To:</b> 0600	
<b>3. Incident Commander(s) and Command Staff:</b>			<b>7. Operation Section:</b>		
IC/UC's	Mike Nobles, James Aragon(T)	Operations	John Owings, Michael Page(T)		
Deputy	Alan Taylor	Planning Ops	Jim Snow		
Safety Officer	Mark Helm, Mike Seymour(T)	Night Ops	Al Ward		
Information Officer	Alex Olow, DeLyn Sieliet(T), Stephanie Bishop(T)				
Liaison Officer	Allen Johnson, Don Smith(T)	<b>Branch</b>	<b>GREEN RIDGE</b>		
<b>4. Agency/Organization Representatives:</b>		Division/Group	A	Nathan Leatherman	
Agency/Organization	Name	Division/Group	G	Jason Flores	
USFS AADM	Ed Guzman	Division/Group	K/M	Kristian Litz, Daniel Kamakani(T)	
USFS AREP	Bob Foxworth, Susan Piper	Division/Group	P/S		
WA DNR	Wyatt Leighton, Tom Schoenfelder	Division/Group	NIGHT	Jeff Corser(T)	
Asotin Co Fire Dist 1	Noel Hardin	<b>Branch</b>	<b>LICK</b>	<b>Robert Szczepanek</b>	
Columbia Co Fire 3	Jeromy Phinney	Division/Group	D/H/T/W	Neal McCann(T)	
Garfield Co Fire Dist 1	James Cleveland	Division/Group			
WFS	Devin McCosh	Division/Group			
WDFW - LEO	Paul Mosman	Division/Group			
Covid Liaison	Cass Monroe, Steve Medina	Division/Group			
		<b>Branch</b>	<b>CONTINGENCY</b>	<b>Greg Overacker</b>	
		Division/Group	NORTH	Andy Juarez	
		Division/Group	SOUTH	Andy Wordin(T)	
		Division/Group			
<b>5. Planning Section:</b>		Division/Group			
Chief	Steve Anderson, Greg White(T)	Division/Group			
Deputy	Ken Bates	<b>Branch</b>			
Resource Unit	Josh Clark, Mike Yeun(T)	Division/Group			
Situation Unit	John Hunter, Ray Rook(T)	Division/Group			
Demobilization Unit	Jan Grisedale	Division/Group			
Documentation Unit	Joey Kosiorowski(V)	Division/Group			
GISS	Rene Gonzalez, Greg Elwood, Jenny Garstang(T), Anthony Scavone(T)	Division/Group			
FBAN	Dan O'Connor	<b>Branch</b>			
IMET	Mary Wister	Division/Group			
Human Resources	Bill Otani	Division/Group			
Air Resources Advisor	Katy Warner	Division/Group			
Lead READ	Will Marquardt	Division/Group			
Training Specialist	Seneca Smith	Division/Group			
		<b>Air Operations Branch</b>		<b>Director:</b>	<b>JoAnn Overacker</b>
			Air Tactical Group Supervisor	Kevin King	
			Helibase Manager	Austin McDonald(T)	
<b>6. Logistics Section</b>					
Chief	Scott Ashbach				
Supply Unit	Ruben Lopez(T)				
Facilities Unit	Art Curley, Richard Wiegand(T), Wendell Simmons(T)	<b>8. Finance/Administration Section:</b>			
Ground Support Unit	Mark Bagley	Chief	Lisa Wilson		
Communications Unit	Mike Greene	Time Unit	Rebecca Lang(T)		
Medical Unit	Brandon Bennewate(T)	Cost Unit	David Dukart(V)		
ITSS	Brett Davidson, Rocio Del Arroyo(T)	Comp/Claims Unit	Pearl Cowan(V)		
Food Unit	Mike Kinne, Ed Jensen(T)	PTRC	Katie Fiely(T)(V)		
Ordering	Matt Berger, Collette Johnson	EQTR	Mary Flanary(T)		
<b>Prepared By: Name:</b>	Greg White	<b>Position/Title:</b>	PSC(T)	<b>Signature:</b>	
<b>ICS 203</b>		<b>Date/Time:</b>	8/4/2021 2300 hours		





## Lick Creek / Green Ridge Weather Forecast



**FORECAST NO:** 25  
**FORECAST FOR:** Thursday Day and Night Shift  
**SHIFT DATE:** 8/5/2021  
**DATE AND TIME ISSUED:** 8/4/2021 at 2000 PDT

**NAME OF FIRE:** Lick Creek/Green Ridge  
**UNIT:** OR-UMF  
**SIGNED:** *Mary Wister* - Incident Meteorologist  
541-377-9905 (cell) / mary.wister@noaa.gov

---

**...Red Flag Warning in Effect 11 AM to 11 PM Thursday for Thunderstorms...  
...Storms may bring gusty and erratic winds...**

**WEATHER DISCUSSION:** A Pacific frontal system will bring showers to southeast Washington today and tonight, and thunderstorms are possible at ICP, Green Ridge, and Lick Creek. Rainfall amounts are not expected to be significant, although a few storms could bring brief heavy downpours. Outflow winds of 35 mph are possible. Precipitation will develop as early as 1000 PDT with periods of showers and embedded thunderstorms through the day and into the evening. Showers will end early Friday morning followed by increasing southwest winds that will continue through the weekend.

---

### **TODAY:**

**WEATHER:** Mostly cloudy. Showers likely with a chance of thunderstorms.  
**MAXIMUM TEMPERATURE:** 75-80° above 5000 feet. 88-93° valley bottoms.  
**MINIMUM RELATIVE HUMIDITY:** 38-43% above 5000 feet. 22-27% valley bottoms.  
**20-FOOT RIDGETOP WINDS:** Variable wind 3-5 mph becoming Northwest 4-8 mph with gusts to 12 mph.  
**GREEN RIDGE CREEKS:** Upslope/Upcanyon 3-8 mph.  
**CHANCE OF WETTING RAIN ( $\geq 0.10''$ ):** 50%. **RAINFALL AMOUNTS:** up to 0.2 with most showers.  
**LIGHTNING ACTIVITY LEVEL:** 2...possibly 3.  
**HAINES INDEX:** 4 (Low)  
**INVERSIONS/STABILITY:** Low level inversion breaking around 9 AM. Unstable.

---

### **TONIGHT:**

**WEATHER:** Mostly cloudy. Scattered showers and a chance of thunderstorms...mainly before midnight.  
**MINIMUM TEMPERATURE:** 65-70° above 5000 feet. 60-65° valley bottoms.  
**MAXIMUM RELATIVE HUMIDITY:** 68-73% above 5000 feet. 80-90% valley bottoms.  
**20-FOOT RIDGETOP WINDS:** South-Southwest 8-12 mph. Winds may gust to 17 mph in early morning.  
**GREEN RIDGE CREEKS:** Downslope/Down canyon 2-5 mph.  
**CHANCE OF WETTING RAIN ( $\geq 0.10''$ ):** 30% **RAINFALL AMOUNTS:** up to 0.1 with most showers.  
**LIGHTNING ACTIVITY LEVEL:** 2...possibly 3 in the evening.  
**HAINES INDEX:** 3 (Very Low)  
**INVERSIONS/STABILITY:** Low level inversion developing. Increasing stability early morning.

---

### **FRIDAY:**

**WEATHER:** Mostly cloudy. Cooler and Windy,  
**MAXIMUM TEMPERATURE:** 66-71° above 5000 feet. 75-80° valley bottoms.  
**MINIMUM RELATIVE HUMIDITY:** 55-60% above 5000 feet. 25-30% valley bottoms.  
**20-FOOT RIDGETOP WINDS:** Southwest 9-13 mph with gusts to 20 mph. Gusts 25 mph along exposed ridges.  
**GREEN RIDGE CREEKS:** Upslope/Upcanyon 3-8 mph. Southwest winds channeling along drainages in Lick Creek with gusts to 15 mph.  
**CHANCE OF WETTING RAIN ( $\geq 0.10''$ ):** 0%. **RAINFALL AMOUNTS:** up to 0.2 with most storms.  
**LIGHTNING ACTIVITY LEVEL:** 1.  
**HAINES INDEX:** 3 (Very Low)  
**INVERSIONS/STABILITY:** Stable. Strong mid-level inversion.

## FIRE BEHAVIOR FORECAST

<b>FORECAST NUMBER:</b> 10	<b>TYPE OF FIRE:</b> Vegetation
<b>FIRE NAME:</b> Lick Creek-Green Ridge Fires	<b>OPERATIONAL PERIOD:</b> Aug 5 <sup>th</sup> , 2021 24 HOUR
<b>DATE ISSUED:</b> August 4 <sup>th</sup> , 2021	<b>TIME ISSUED:</b> 1930
<b>UNIT:</b> WA-Umatilla National Forest	<b>SIGNED:</b> Dan O'Connor Fire Behavior Analyst (FBAN)

**WEATHER SUMMARY:** See detailed Fire Weather Forecast in IAP

### FUELS:

Fire areas include a range of conifer systems, from higher elevation Sub Alpine Fir and Engelmann Spruce, to Doug-Fir, Grand Fir and Lodgepole Pine under 5000', and Ponderosa Pine in the lower elevations of the Forest. Outside of the 2006 Columbia Complex and the 2015 Grizzly Complex, all forested areas have extensive dead and down and ladder fuels that will work together to elevate fire into the crowns and generate short range spotting.

The area is currently classified as 'Exceptional' drought by the US Drought Monitor, with Energy Release Components currently setting daily record highs, and approaching all time high levels. You may see some resistance to spread in brush and re-prod areas, but these veg structures are losing moisture daily. Heavy dead and down fuels will likely burn completely, holding heat and actively consuming through all hours of the day.

### EXPECTED FIRE BEHAVIOR: *Based on the Warmest, Driest, Windiest Conditions Forecasted*

<u>Maximum Spotting Distance</u> ½ mile (1 mile plus outflows) <u>Probability of Ignition</u> 70%	<u>Fuel Type/Model</u>	<u>Maximum Rate of Spread (chains/hour)</u>	<u>Maximum Flame Length (feet)</u>
	Timber litter and understory TU5/TL4	Head 8-10 ch/hr Flank 3-5 ch/hr <b>Outflow 16-20 ch/hr</b>	Head 6-8 ft Flank 4-6 ft <b>Outflow 12-14 ft</b>
	Grass/Shrub GS1	Head 10-12 ch/hr Flank 4-6 ch/hr <b>Outflow 28 ch/hr</b>	Head 4-6 ft Flank 2-4 ft <b>Outflow 8-10 ft</b>

### GENERAL/Potential:

**DAY: Red Flag Warning for thunderstorms today.** Some moderation is possible if we see cloud cover and moisture, but relative humidity combined with afternoon winds will still be low enough to sustain fire growth. As the smoke clears out late morning anticipate an uptick in fire behavior in the heavies, which will elevate fire once again into the crowns to aid in spotting and perimeter growth. Thunderstorms in the area could bring strong, erratic winds especially where influenced by terrain.

### SPECIFIC

**Green Ridge:** Lots of great work with crews and the drone operators to get depth all along the 46 road in Division Gulf over the past few days. Keep in mind the Lick fire had spotting outside lines a couple weeks after the fire moved through, heavies are holding heat for extended times in the drought. Any reburning or interior islands that make runs could produce spots across lines. If working in Division Alpha, keep a good heads up for fire below your location as northwest winds have generated slope runs, especially on west aspects. Heads up again for any squirrely winds that could influence the backing fire on the south side of the Tucannon River in Division Mike.

**Lick Creek:** Low probability, high consequence spotting concerns remain along the western and southern flanks.

**Night Division:** Activity will slowly taper down from shift change across the active parts of the Green Ridge fire as the smoke settles and relative humidity recovers.

### AIR OPERATIONS:

Sunrise: 0535, Civil Twilight ends: 2053

### SAFETY:

Be especially heads up for outflow winds from thunderstorms in the vicinity that may create rapid fire growth.



# SAFETY MESSAGE



*Fire fighter safety comes first on every fire, every time*

We are **ALL** accountable for **SAFE** behaviors  
For Day & Night Operations: **8/5/21 0600 – 8/6/21 0600**

INCIDENT: Lick Creek, Green Ridge

Date Prepared: August 5, 2021

TIME: 1900

Safety Shop wants to thank you for your attention to detail when it comes to SAFETY. We have had a great safety record out on the fire line. Especially through this heat and while working in areas of steep ground. Way to go! We need more safety personnel like you on every fire.

*Major Hazards and Risks: Mop up and stump holes, hazard trees, steep rugged terrain and driving, public encroachment into the fire.*

## IT'S LIKE RIDING A BIKE

Strive to learn, understand and make adhering to the 10's, 18's and LCES as natural as riding a bike.



When you first rode a bike it took a bit to learn how to ride it. Once you learned how to ride that bike you had to improve your skills to be able to navigate through the HAZARD's, this is the same as learning your 10's, 18's and LCES. Once you learn them, you improve your understanding and their use to help NAVIGATE THE HAZARDS.

Be alert, Stay calm, Think clearly, Act decisively

You're doing a great job of **Fighting** this **Fire Aggressively**, and **Having Provided** for yours and others **Safety First!**



**Demob...before you hit the road...  
Check this out...**

- Check the windshield, wipers, and wiper fluid level. Adjust mirrors.
- Keep windows, mirrors, and lights clean to better see and be seen.
- Check headlights, turn signals, tail lights, reflectors and running lights.
- Check front and back tires (including wheels and lug nuts).
- Under the hood, check all fluid levels and especially the air filter.
- Drivers to be rested up prior to driving.

**LIFE FIRST EVERYONE GOES HOME!**

Do your part to insure you make it home.



Thanks, from your Safety Team!!

Safety Officers: Mike Seymour SOF2 T, Mark Helm SOF2  
Shawn Shook SOFR, Ryan Grant SOFR











# ASSIGNMENT LIST (ICS 204 WF)

CONTROLLED UNCLASSIFIED  
INFORMATION//BASIC

<b>1. Incident Name:</b> <b>LICK CREEK/GREEN RIDGE</b>	<b>2. Operational Period:</b> Date From: 08/05/21    Date To: 08/06/21 Time From: 0600    Time To: 0600	<b>3. Branch</b> <b>Division</b> <b>GREEN</b> <b>K/M</b> <b>RIDGE</b> <b>Kilo/Mike</b>
---	---	--


<b>4. Operations Personnel:</b>		Page 1 of 2
Operations Section Chief: <b>John Owings, Michael Page(T)</b>	Night Ops <b>AI Ward</b>	
Branch Director:	Planning Ops <b>Jim Snow</b>	
Division/Group Supervisor: <b>Kristian Litz, Daniel Kamakani(T)</b>	Air Attack: <b>Kevin King</b>	

<b>5. Resources Assigned:</b>		** Resources Below in Bold are 12 Hour **					
Resource Identifier	ALS	LWD	Leader	Personnel	Request #	Hours	Reporting Location
HC2 Umatilla LEND		8/5	<b>Ellis</b>	20	<b>C-3</b>	<b>0600-1800</b>	<b>Wooten Camp</b>
HC Crew 406 LEND		8/6	<b>Sebers</b>	11		<b>0600-1800</b>	<b>Wooten Camp</b>
ENG3 Taylor LC		8/8	<b>Hatfield</b>	4	<b>E-93</b>	<b>0600-1800</b>	<b>Wooten Camp</b>
ENG3 BDF E314 GR		8/10	<b>Finister</b>	5	<b>E-109</b>	<b>0600-1800</b>	<b>Wooten Camp</b>
ENG3 BDF E336 GR		8/10	<b>Hernandez</b>	5	<b>E-114</b>	<b>0600-1800</b>	<b>Wooten Camp</b>
ENG4 Chewack LC		8/10	<b>Reinbold</b>	3	<b>E-85</b>	<b>0600-1800</b>	<b>Wooten Camp</b>
ENG4 David Carroll GR		8/6	<b>Garcia</b>	3	<b>E-113</b>	<b>0600-1800</b>	<b>Wooten Camp</b>
ENG5 Ya Boy GR		8/11	<b>Bower</b>	3	<b>E-155</b>	<b>0600-1800</b>	<b>Wooten Camp</b>
WTS2 Northern LC		8/9	<b>Martin</b>	1	<b>E-82</b>	<b>0600-1800</b>	<b>Wooten Camp</b>
WTS2 Alder Creek Fire GR		8/14	<b>Beaman</b>	1	<b>E-169</b>	<b>0600-1800</b>	<b>Wooten Camp</b>
WTS2 Able 2 GR		8/14	<b>Smith</b>	1	<b>E-174</b>	<b>0600-1800</b>	<b>Wooten Camp</b>
CHIP Big Bark 3 GR		8/6	<b>Palmer</b>	3	<b>E-60</b>	<b>0600-1800</b>	<b>Wooten Camp</b>
MAST Bruce Young GR		8/16	<b>Nicol</b>	2	<b>E-69</b>	<b>0600-1800</b>	<b>Wooten Camp</b>
MAST Eagle CAP GR		8/15	<b>Pierce</b>	2	<b>E-70</b>	<b>0600-1800</b>	<b>Wooten Camp</b>
MAST Hayden 2 GR		8/9	<b>Hayden</b>	2	<b>E-72</b>	<b>0600-1800</b>	<b>Wooten Camp</b>
SOFR Shook LC		8/8	<b>Shook</b>	1	<b>O-257</b>	<b>0600-1800</b>	<b>Wooten Camp</b>

**6. Work Assignments:**  
Construct direct and indirect handline utilizing ridges and natural barriers from Lady Bug Campground South.  
Road prep along 4712 Road from DP-261 to the Tucannon Trail DP-300.

**7. Special Instructions:**  
Communicate with adjacent Divisions for holding resource needs.  
DIVS need to identify equipment to be sent in an event of an IA with TFR. Ops will identify closest resources to respond to new incident.  
Wooten Camp to provide DIVS K/M resources with meals, showers, and sleeping area. Maintain crew spacing.  
Please ensure 3/32" fish screens are used at all draft sites in Punjab Creek, Touchet, and Tucannon Rivers.  
Operational briefing to be broadcasted at Wooten Camp at 0600. See IAP for details.

<b>8. Communications</b>							
Name	Ch	Function	Rx Freq	Rx Tone	Tx Freq	Tx Tone	Notes
SEE ICS 205 COMM PLAN							

**9. Prepared by: Name:** Josh Clark, Mike Yeun(T)    RESL    Signature: 

**ICS 204**    Date/Time: 8/4/2021 2200    Personnel Count: 67









# ASSIGNMENT LIST (ICS 204 WF)

CONTROLLED UNCLASSIFIED  
INFORMATION//BASIC

<b>1. Incident Name:</b> <b>LICK CREEK/GREEN RIDGE</b>	<b>2. Operational Period:</b> Date From: 08/05/21    Date To: 08/06/21 Time From: 0600    Time To: 0600	<b>3. Branch</b> <b>Division</b> <b>GREEN RIDGE</b> <b>NIGHT</b>
<b>4. Operations Personnel:</b>		Page 1 of 1

Operations Section Chief: <b>John Owings, Michael Page(T)</b>	Night Ops: <b>Al Ward</b>
Branch Director:	Planning Ops: <b>Jim Snow</b>
Division/Group Supervisor: <b>Jeff Corser(T)</b>	Air Attack: <b>Kevin King</b>

<b>5. Resources Assigned:</b>		<b>** Resources Below in Bold are 12 Hour **</b>					
Resource Identifier	ALS	LWD	Leader	Personnel	Request #	Hours	Reporting Location
ENG4 Inbound E18 GR		8/14	<b>Navarro</b>	3	<b>E-161</b>	1800-0600	Dayton ICP
ENG4 Utting Const GR		8/14	<b>Bailey</b>	3	<b>E-165</b>	1800-0600	Dayton ICP
ENG4 GE Forestry GR		8/14	<b>Aguilar</b>	3	<b>E-166</b>	1800-0600	Dayton ICP
ENG5 Iron Triangle GR		8/12	<b>Carter</b>	3	<b>E-163</b>	1800-0600	Dayton ICP
ENG5 Methow River GR		8/14	<b>Hernandez</b>	3	<b>E-159</b>	1800-0600	Dayton ICP
ENG6 Eye of the Eagle GR		8/13	<b>Gillian</b>	2	<b>E-147</b>	1800-0600	Dayton ICP
ENG6 ONF E619 GR		8/13	<b>Bell</b>	3	<b>E-148</b>	1800-0600	Dayton ICP
ENG6 Osprey Wildfire GR		8/12	<b>Roe</b>	3	<b>E-149</b>	1800-0600	Dayton ICP
ENG6 Timberrmans Inbound GR		8/13	<b>Thompson</b>	3	<b>E-151</b>	1800-0600	Dayton ICP
ENG6 Fountain Fire GR		8/9	<b>Orta</b>	3	<b>E-153</b>	1800-0600	Dayton ICP
ENG6 Fort Pierre E58 GR		8/8	<b>Odden</b>	3	<b>E-158</b>	1800-0600	Dayton ICP
WTS2 Dahl-Bredine GR		8/13	<b>Dahl-Bredine</b>	1	<b>E-133</b>	1800-0600	Dayton ICP
WTS2 Black Range GR		8/14	<b>Sallee</b>	1	<b>E-134</b>	1800-0600	Dayton ICP
DOZ3 Mortimore 1 GR		8/13	<b>Mortimore</b>	2	<b>E-176</b>	1800-0600	Dayton ICP
DOZ3 Mortimore 2 GR		8/13	<b>Jaeger</b>	2	<b>E-180</b>	1800-0600	Dayton ICP
Ambulance 4 DG		8/8	<b>Day/Dulin</b>	2	<b>E-61</b>	1800-0600	Dayton ICP
Ambulance 7 GR		8/17	<b>Bigelow/Carroll</b>	2	<b>E-206</b>	1800-0600	Dayton ICP

**6. Work Assignments:**  
 Patrol and improve line where needed.  
 Prep for firing operations transition from night to day operations.  
 Take action as needed to ensure that existing structures and infrastructures do not sustain further damage.  
 Provide for structure protection to Little Turkey Tail Recreation Residence Area.

**7. Special Instructions:**  
 Communicate with Operations on scouting needs.  
 Please make sure 3/32" fish screens are used at all draft sites in Punjab Creek, Touchet, and Tucannon Rivers.  
 Resources to return to Dayton ICP at end of shift.

Name	Ch	Function	Rx Freq	Rx Tone	Tx Freq	Tx Tone	Notes
SEE ICS 205 COMM PLAN							

<b>9. Prepared by: Name:</b>	Josh Clark, Mike Yeun(T)	RESL	Signature:
<b>ICS 204</b>	Date/Time: 8/4/2021	2200	Personnel Count: 42

# ASSIGNMENT LIST (ICS 204 WF)

CONTROLLED UNCLASSIFIED  
INFORMATION//BASIC

<b>1. Incident Name:</b>	<b>2. Operational Period:</b>	<b>3. Branch</b>	<b>Division</b>
<b>LICK CREEK/GREEN RIDGE</b>	Date From: 08/05/21    Date To: 08/06/21 Time From: 0600    Time To: 0600	<b>LICK</b>	<b>D/H/T/W</b>

**4. Operations Personnel:** Page 1 of 1

Operations Section Chief: <b>John Owings, Michael Page(T)</b>	Night Ops: <b>Al Ward</b>
Branch Director: <b>Robert Szczepanek</b>	Planning Ops: <b>Jim Snow</b>
Division/Group Supervisor: <b>Neal McCann(T)</b>	Air Attack: <b>Austin McDonald(T)</b>

5. Resources Assigned:	** Resources Below in Bold are 12 Hour **							
Resource Identifier	ALS	LWD	Leader	Personnel	Request #	Hours	Reporting Location	
<b>STEN Cwiak GR</b>		<b>8/14</b>	<b>Cwiak</b>	1	<b>O-300</b>	<b>0600-1800</b>	<b>Wooten Camp</b>	
<b>TFLD(T) Walters GR</b>		<b>8/16</b>	<b>Walters</b>	1	<b>O-329</b>	<b>0600-1800</b>	<b>Wooten Camp</b>	
<b>ENG3 SNF E313 GR</b>		<b>8/9</b>	<b>Holland</b>	5	<b>E-157</b>	<b>0600-1800</b>	<b>Wooten Camp</b>	
<b>ENG4 Rattlesnake DG</b>		<b>8/6</b>	<b>Worford</b>	3	<b>E-26</b>	<b>0600-1800</b>	<b>Wooten Camp</b>	
<b>ENG4 Fire Control DG</b>		<b>8/8</b>	<b>Fuchs</b>	3	<b>E-51</b>	<b>0600-1800</b>	<b>Wooten Camp</b>	
<b>ENG4 Flashback Fire GR</b>		<b>8/12</b>	<b>Ribich</b>	3	<b>E-131</b>	<b>0600-1800</b>	<b>Wooten Camp</b>	
<b>ENG4 JD Forestry GR</b>		<b>8/5</b>	<b>Lopez</b>	3	<b>E-156</b>	<b>0600-1800</b>	<b>Wooten Camp</b>	
<b>ENG4 Thunderbold GR</b>		<b>8/13</b>	<b>Grant</b>	3	<b>E-160</b>	<b>0600-1800</b>	<b>Wooten Camp</b>	
<b>ENG6 Peoples Valley GR</b>		<b>8/8</b>	<b>Hernandez</b>	3	<b>E-110</b>	<b>0600-1800</b>	<b>Wooten Camp</b>	
<b>ENG6 Late Summers 1 GR</b>		<b>8/13</b>	<b>Baker</b>	3	<b>E-152</b>	<b>0600-1800</b>	<b>Wooten Camp</b>	
<b>WTS2 Ash Kickers DG</b>		<b>8/14</b>	<b>Puckett</b>	1	<b>E-15</b>	<b>0600-1800</b>	<b>Wooten Camp</b>	
<b>WTS2 Minam River DG</b>		<b>8/5</b>	<b>Henderson</b>	1	<b>E-40</b>	<b>0600-1800</b>	<b>Wooten Camp</b>	
<b>WTT2 Swanson DG/DNR*</b>		<b>8/8</b>	<b>Wilson</b>	1	<b>E-78</b>	<b>0600-1800</b>	<b>Wooten Camp</b>	
<b>DOZ3 Traverse GR</b>		<b>8/13</b>	<b>Wilcox</b>	2	<b>E-177</b>	<b>0600-1800</b>	<b>Wooten Camp</b>	
<b>DOZ3 Swanson Log DG/DNR*</b>		<b>8/8</b>	<b>Smith</b>	2	<b>E-69</b>	<b>0600-1800</b>	<b>Wooten Camp</b>	
<b>THSP Davis LC</b>		<b>8/8</b>	<b>Davis</b>	1	<b>O-278</b>	<b>0600-1800</b>	<b>Wooten Camp</b>	
<b>Ambulance 6 LC</b>		<b>8/5</b>	<b>Gomes/Hicks</b>	2	<b>E-39</b>	<b>0600-1800</b>	<b>Wooten Camp</b>	
<b>EMTF Jonassen GR</b>		<b>8/9</b>	<b>Jonassen</b>	1	<b>O-196</b>	<b>0600-1800</b>	<b>Wooten Camp</b>	

**6. Work Assignments:**  
 Patrol and Mop-up as needed to secure fire's edge.  
 Take action on spot fires where safe.

**7. Special Instructions:**  
 Please backhaul trash and assist in repairing any fences that are cut.  
 DIVS need to identify equipment to be sent in an event of an IA with TFR. Ops will identify closest resources to respond to new incident.  
 Wooten Camp to provide Lick Branch resources with meals, showers, and sleeping area. Maintain crew spacing.  
 Please make sure 3/32" fish screens are used at all draft sites in Punjab Creek, Touchet, and Tucannon Rivers.  
 Operational briefing to be broadcasted at Wooten Camp at 0600. See IAP for details.

Name	Ch	Function	Rx Freq	Rx Tone	Tx Freq	Tx Tone	Notes
SEE ICS 205 COMM PLAN							

**9. Prepared by: Name:** Josh Clark, Mike Yeun(T)      RESL  
 Signature:      Personnel Count: 39



# ASSIGNMENT LIST (ICS 204 WF)

CONTROLLED UNCLASSIFIED  
INFORMATION//BASIC

<b>1. Incident Name:</b> <b>LICK CREEK/GREEN RIDGE</b>	<b>2. Operational Period:</b> Date From: 08/05/21    Date To: 08/06/21 Time From: 0600            Time To: 0600	<b>3. Branch</b> <b>Division</b> <b>CONTINGENCY</b> <b>NORTH</b>
<b>4. Operations Personnel:</b>		Page 1 of 1

Operations Section Chief: <b>John Owings, Michael Page(T)</b>	Night Ops: <b>Al Ward</b>
Branch Director: <b>Greg Overacker</b>	Planning Ops: <b>Jim Snow</b>
Division/Group Supervisor: <b>Andy Juarez</b>	Air Attack: <b>Kevin King</b>

5. Resources Assigned:	** Resources Below in Bold are 12 Hour **							
Resource Identifier	ALS	LWD	Leader	Personnel	Request #	Hours	Reporting Location	
TFLD(T) Lennox GR		8/9	Lennox	1	O-224	0600-1800	Wooten Camp	
WTS2 MVP Team DG		8/16	Konrad	1	E-48	0600-1800	Wooten Camp	
WTS2 Green Mountain GR		8/17	Stevens	1	E-168	0600-1800	Wooten Camp	
WTS2 Hek Jones GR		8/14	Long	1	E-171	0600-1800	Wooten Camp	
DOZ2 Overpeck GR		8/18	Overpeck	2	E-4	0600-1800	Wooten Camp	
DOZ3 Bruce Young GR		8/15	Johnson	2	E-85	0600-1800	Wooten Camp	
EXCA Henderson Log 2 DG/DNR*		8/6	West	1	E-87	0600-1800	Wooten Camp	
FEL2 Henderson Log 1 DG/DNR*		8/8	Lewis	1	E-85	0600-1800	Wooten Camp	
SOFR Foco		8/18	Foco	1	O-368	0600-1800	Wooten Camp	
READ Clark GR		8/14	Clark	1	O-259	0600-1800	Wooten Camp	
READ (T) Allen GR		8/16	Allen	1	O-379	0600-1800	Wooten Camp	

**6. Work Assignments:**  
Continue to gather intel on structures north of the fire.  
Improve any contingency lines where needed.

**7. Special Instructions:**  
Communicate with adjacent Divisions for holding resource needs.  
DIVS need to identify equipment to be sent in an event of an IA with TFR. Ops will identify closest resources to respond to new incident.  
Wooten Camp to provide Contingency North resources with meals, showers, and sleeping area. Maintain crew spacing.  
Please make sure 3/32" fish screens are used at all draft sites in Punjab Creek, Touchet, and Tucannon Rivers.  
Operational briefing to be broadcasted at Wooten Camp at 0600. See IAP for details.

**8. Communications**

Name	Ch	Function	Rx Freq	Rx Tone	Tx Freq	Tx Tone	Notes
SEE ICS 205 COMM PLAN							

**9. Prepared by: Name:** Josh Clark, Mike Yeun(T)                      RESL                      Signature:

**ICS 204**                      Date/Time: 8/4/2021    2200                      Personnel Count: 13



# ASSIGNMENT LIST (ICS 204 WF)

CONTROLLED UNCLASSIFIED  
INFORMATION//BASIC

<b>1. Incident Name:</b> <b>LICK CREEK/GREEN RIDGE</b>	<b>2. Operational Period:</b> Date From: 08/05/21    Date To: 08/06/21 Time From: 0600    Time To: 0600	<b>3. Branch</b> <b>Division</b> <b>CONTINGENCY</b> <b>SOUTH</b>
<b>4. Operations Personnel:</b>		Page 1 of 1

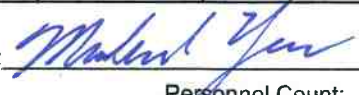
Operations Section Chief: <b>John Owings, Michael Page(T)</b>	Night Ops: <b>Al Ward</b>
Branch Director: <b>Greg Overacker</b>	Planning Ops: <b>Jim Snow</b>
Division/Group Supervisor: <b>Andy Wordin(T)</b>	Air Attack: <b>Kevin King</b>

5. Resources Assigned:	** Resources Below in Bold are 12 Hour **							
Resource Identifier	ALS	LWD	Leader	Personnel	Request #	Hours	Reporting Location	
<b>ENG6 Flashover GR</b>		<b>8/13</b>	<b>Gilmore</b>	<b>2</b>	<b>E-162</b>	<b>0600-1800</b>	<b>Dayton ICP</b>	
<b>WTS2 Huffman GR</b>		<b>8/20</b>	<b>Huffman</b>	<b>1</b>	<b>E-167</b>	<b>0600-1800</b>	<b>Dayton ICP</b>	
<b>WTS2 Martin GR</b>		<b>8/15</b>	<b>Martin</b>	<b>1</b>	<b>E-173</b>	<b>0600-1800</b>	<b>Dayton ICP</b>	
<b>DOZ3 Kiser &amp; Kiser 1 GR</b>		<b>8/15</b>	<b>Kiser</b>	<b>1</b>	<b>E-178</b>	<b>0600-1800</b>	<b>Dayton ICP</b>	
<b>DOZ3 Kiser &amp; Kiser 2 GR</b>		<b>8/15</b>	<b>Mackay</b>	<b>1</b>	<b>E-179</b>	<b>0600-1800</b>	<b>Dayton ICP</b>	
<b>MAST Eagle CAP LC</b>		<b>8/8</b>	<b>Peterson</b>	<b>2</b>	<b>E-57</b>	<b>0600-1800</b>	<b>Dayton ICP</b>	
<b>MAST Tucannon Outfitters GR</b>		<b>8/7</b>	<b>Martin</b>	<b>1</b>	<b>E-107</b>	<b>0600-1800</b>	<b>Dayton ICP</b>	
<b>GRD Alvord GR</b>		<b>8/13</b>	<b>Davis</b>	<b>2</b>	<b>E-132</b>	<b>0600-1800</b>	<b>Dayton ICP</b>	
<b>FEL1 Bruce Young GR</b>		<b>8/22</b>	<b>McCleran</b>	<b>2</b>	<b>E-79</b>	<b>0600-1800</b>	<b>Dayton ICP</b>	
<b>FEL2 Wyeast GR</b>		<b>8/7</b>	<b>Sandoz</b>	<b>2</b>	<b>E-102</b>	<b>0600-1800</b>	<b>Dayton ICP</b>	
<b>READ Caire</b>		<b>8/11</b>	<b>Caire</b>	<b>1</b>	<b>O-261</b>	<b>0600-1800</b>	<b>Dayton ICP</b>	

**6. Work Assignments:**  
Continue to gather intel on structures south of the fire.  
Improve any contingency lines where needed.

**7. Special Instructions:**  
Communicate with adjacent Divisions for holding resource needs.  
Check with Operations before moving personnel and equipment into Wilderness.  
DIVS need to identify equipment to be sent in an event of an IA with TFR. Ops will identify closest resources to respond to new incident.  
Communicate with Operations on scouting needs.  
Please make sure 3/32" fish screens are used at all draft sites in Punjab Creek, Touchet, and Tucannon Rivers.  
Resources to return to Dayton ICP at end of shift.

8. Communications							
Name	Ch	Function	Rx Freq	Rx Tone	Tx Freq	Tx Tone	Notes
SEE ICS 205 COMM PLAN							

**9. Prepared by: Name:** Josh Clark, Mike Yeun(T)    RESL    Signature: 

**ICS 204**    Date/Time: 8/4/2021 2200    Personnel Count: 16

# INCIDENT RADIO COMMUNICATIONS PLAN (ICS 205)

Controlled Unclassified Information//Basic

<b>1. Incident Name:</b>		<b>2. Date/Time Prepared:</b>		<b>3. Operational Period:</b>	
LICK CREEK		Date: 08/04/2021 Time: 1912		8/05/21 0600- 8/06/21 0600	
		Date/Time From: 08/05/2021 0600		Date/Time To: 08/06/2021 0600	
		THU		FRI	


  

4. Basic Radio Channel Use:										
Zone Group	Ch #	Function	Channel Name/Trunked Radio System Talkgroup	Assignment	RX Freq	RX Tone/NAC	TX Freq	TX Tone/NAC	Mode (A, D, or M)	Remarks
LICK CREEK	1	COMMAND	CMD 1	OUT OF SERVICE					A	Removed from Service. Unavailable for use.
LICK CREEK	2	COMMAND	CMD 2	COMMAND	170.4125N	131.8	165.9625N	131.8	A	ON PINKHAM BUTTE LINKED Green Ridge
LICK CREEK	3	COMMAND	CMD 3	COMMAND	170.0250N	131.8	165.4500N	131.8	A	CLEARWATER LOOKOUT Linked to Green Ridge
LICK CREEK	4	COMMAND	CMD 4	OUT OF SERVICE					A	
LICK CREEK	5	TACTICAL	TAC 5	LICK BRANCH	168.0500N	131.8	168.0500N	131.8	A	
LICK CREEK	6	TACTICAL	TAC 6	UNASSIGNED	168.6000N	131.8	168.6000N	131.8	A	
LICK CREEK	7	TACTICAL	TAC 7	UNASSIGNED	166.7250N	131.8	166.7250N	131.8	A	
LICK CREEK	8	TACTICAL	TAC 8	UNASSIGNED	166.7750N	131.8	166.7750N	131.8	A	
LICK CREEK	9	TACTICAL	TAC 9	UNASSIGNED	168.2500N	131.8	168.2500N	131.8	A	
LICK CREEK	10	TACTICAL	TAC 10	UNASSIGNED	168.2000N	131.8	168.2000N	131.8	A	
LICK CREEK	11	COMMAND	CMD 11	COMMAND	169.4500N	131.8	172.5500N	131.8	A	LOCATED NEAR DP57
LICK CREEK	12	COMMAND	COTTWD	LOCAL RPTR	173.7750N	131.8	164.8250N	127.3	A	LOCATED 18 M SE OF POMEROY
LICK CREEK	13	AIR TO GROUND	VMED28	MED A / G	155.3400N		155.3400N		A	USE WITH AIR AMBULANCE
LICK CREEK	14	AIR TO GROUND	A/G PRI	A / G	169.2000N		169.2000N		A	
LICK CREEK	15	AIR TO GROUND		UNAVAILABLE					A	REASSIGNED TO GREEN RIDGE FIRE.
LICK CREEK	16	AIR GUARD	AIRGUARD	AIR GUARD	168.6250N		168.6250N	110.9	A	Emergency Aircraft Contact

<b>5. Special Instructions:</b>	

<b>6. Prepared By</b>	Name: MIKE GREENE	Signature: 
(Communications Unit Leader)	IAP Page	Date/Time: 08/04/2021 1912

# INCIDENT RADIO COMMUNICATIONS PLAN (ICS 205)

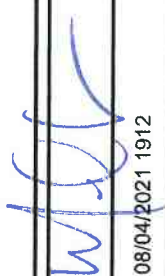
Controlled Unclassified Information//Basic

1. Incident Name: GREEN RIDGE  
 2. Date/Time Prepared: 08/04/2021 1912  
 3. Operational Period: 8/05/21 0600- 8/06/21 0600

Date: 08/04/2021  
 Time: 1912  
 Date/Time From: 08/05/2021 0600  
 Date/Time To: 08/06/2021 0600  
 THU FRI

4. Basic Radio Channel Use:															
Zone Group	Ch #	Function	Channel Name/Trunked Radio System Talkgroup	Assignment	RX Freq	RX Tone/NAC	TX Freq	TX Tone/NAC	Mode (A, D, or M)	Remarks					
GREENRI DGE	1	TACTICAL	BRII TAC 1	DIV K / M	168.0500N	151.4	168.0500N	151.4	A						
GREENRI DGE	2	TACTICAL	BRII TAC 2	DIV A	168.6000N	151.4	168.6000N	151.4	A						
GREENRI DGE	3	TACTICAL	BRII TAC 3	CONTINGENCY	166.7250N	151.4	166.7250N	151.4	A						
GREENRI DGE	4	TACTICAL	BRII TAC 4	DIV G	166.7750N	151.4	166.7750N	151.4	A						
GREENRI DGE	5	TACTICAL	BRII TAC 5	UNASSIGNED	168.2500N	151.4	168.2500N	151.4	A						
GREENRI DGE	6	TACTICAL	BRII TAC 6	DIV NIGHT	168.2000N	151.4	168.2000N	151.4	A						
GREENRI DGE	7	COMMAND	BRII CMD 7	COMMAND	170.0000N	151.4	166.6750N	151.4	A	LITTLE TURKEY TAIL LINKED TO CMD 8 & 9					
GREENRI DGE	8	COMMAND	BRII CMD 8	COMMAND	170.6875N	151.4	166.5750N	151.4	A	TALLOW FLATS LINKED TO CMD 7 & 9					
GREENRI DGE	9	COMMAND	BRII CMD 9	COMMAND	170.4250N	151.4	168.0750N	151.4	A	CHASE MTN LINKED TO CMD 7 & 8					
GREENRI DGE	10	COMMAND	BRII CMD 10	COMMAND	172.0250N	151.4	162.1750N	151.4	A	HOPKINS RIDGE LINK 7, 8, & 9					
GREENRI DGE	11	COMMAND	ICP LINK	COMMAND	172.0750N	151.4	162.2000N	151.4	A	LINK ICP USE ONLY					
GREENRI DGE	12	AIR TO GROUND	V MED 28	MEDICAL A/G	155.3400N		155.3400N		A	A/G USE WITH AIR AMBULANCE					
GREENRI DGE	13	AIR TO GROUND	A/G LOGISTICS		167.0750N		167.0750N		A	SLING LOADS AND TROOP SHUTTLES					
GREENRI DGE	14	AIR TO GROUND	A/G PRIMARY		168.2750N		168.2750N		A						
GREENRI DGE	15	AIR TO GROUND	A/G SECONDARY		168.5250N		168.5250N		A						
GREENRI DGE	16	AIR GUARD	AIR GUARD		168.6250N		168.6250N	110.9	A	USE FOR AIRCRAFT EMERGENCY CONTACT					

5. Special Instructions:

6. Prepared By: (Communications Unit Leader) Name: MIKE GREENE  
 Signature:   
 Date/Time: 08/04/2021 1912

ICS 205 IAP Page



# INCIDENT RADIO COMMUNICATIONS PLAN (ICS 205)


Controlled Unclassified Information//Basic

<b>1. Incident Name:</b>		<b>2. Date/Time Prepared:</b>		<b>3. Operational Period:</b>	
GREEN RIDGE / LICK CREEK IA'S		Date: 08/04/2021 Time: 1912		8/05/21 0600- 8/06/21 0600	
Date/Time From: 08/05/2021 0600		Date/Time To: 08/06/2021 0600		THU FRI	

4. Basic Radio Channel Use:										
Zone Group	Ch #	Function	Channel Name/Trunked Radio System Talkgroup	Assignment	RX Freq	RX Tone/NAC	TX Freq	TX Tone/NAC	Mode (A, D, or M)	Remarks
IA	1	COMMAND	ST ASOTIN	LOCAL RPTR	159.4200N	D365	151.2950N	D365	A	6 MILES W OF ANATONE
IA	2	COMMAND	COTTNWD	LOCAL RPTR	173.7750N	131.8	164.8250N	127.3	A	18 MILES SE OF POMEROY
IA	3	COMMAND	SADDLE	LOCAL RPTR	173.7750N	131.8	164.8250N	146.2	A	29 MILES SE OF POMEROY
IA	4	COMMAND	OREGON	LOCAL RPTR	173.7750N	131.8	164.8250N	167.9	A	25 MILES S OF POMEROY
IA	5	COMMAND	DIAMOND	LOCAL RPTR	173.7750N	131.8	164.8250N	151.4	A	
IA	6	TACTICAL	DNR COM	TACTICAL	151.4150N	103.5	151.4150N	103.5	A	
IA	7	TACTICAL	DNR TAG1	TACTICAL	151.3100N	103.5	151.3100N	103.5	A	
IA	8	TACTICAL	DNR TAC2	TACTICAL	151.3400N	103.5	151.3400N	103.5	A	
IA	9	TACTICAL	DNR TAC3	TACTICAL	151.3500N	103.5	151.3500N	103.5	A	
IA	10	TACTICAL	REDNET	TACTICAL	153.8300N		153.8300N		A	
IA	11	TACTICAL	UMF-TAC	TACTICAL	168.2375N	131.8	168.2375N	131.8	A	
IA	12	AIR TO GROUND	DNR A/G 1	LOCAL A/G	159.2700N	103.5	159.2700N	103.5	A	
IA	13	AIR TO GROUND	A/G 9	LOCAL A/G	166.9125N		166.9125N		A	
IA	14	AIR TO GROUND	A/G 44	LOCAL A/G	167.6250N		167.6250N		A	
IA	15	AIR TO GROUND	VMED28	MEDICAL A/G	155.3400N		155.3400N		A	
IA	16	AIR GUARD	AIR GUARD	AIR GUARD	168.6250N		168.6250N		A	Emergency Aircraft Contact

<b>5. Special Instructions:</b>			
<b>6. Prepared By</b>		<b>Signature:</b>	
(Communications Unit Leader)			
Name: MIKE GREENE		Date/Time: 08/04/2021 1912	

<b>ICS 205</b>	<b>IAP Page</b>	
----------------	-----------------	--


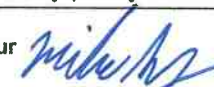
Controlled Unclassified Information//Basic



<b>AIR OPERATIONS SUMMARY 220</b>		Prepared By: JoAnn Overacker	Prepared: 08/04/2021	Prepared Time: 1900 hrs.									
<b>1. INCIDENT NAME: LICK CREEK/GREEN RIDGE</b>		<b>2. OPERATIONAL PERIOD</b> 08/05/2021	<b>START TIME:</b> 0730	<b>SUNRISE:</b> 0									
			<b>END TIME:</b> 2130	<b>SUNSET:</b> 2022									
<b>3. REMARKS</b> (Safety Notes, Hazards, Air Operations Special Equipment, etc.).													
PUBLIC.													
Relief Air Attack to be requested through dispatch.													
**If 353RJ is needed for aerial ignition, the PSD trailer and fuel truck will be relocated to H-25 for the day.													
For IA within the TFR, use A/G Branch 2 Primary.													
<b>*** Monitor adverse weather, have a plan in place if aircraft cannot fly ***</b>													
<b>4. MEDICAL RESPONSE AIRCRAFT:</b>		<b>5. TFR:</b>											
1) Lifeflight: 911		Lick Creek 1/2359 119.5250											
2) Shorthaul: Walla Walla H-353JR (As-350B3)		Elbow Creek 1/1754 134.575											
3) Shorthaul: McCall AS-350B3		Helibase:											
* Follow Medical Plan ICS-206 *		Walla Walla Regional Airport (ALW) N46°05.552 x W118°17.045											
<b>8. FIXED-WING Avail/ Type/ Make-Model/ N#/ Base</b>													
ATGS Platforms: AA N400DS													
Helibase email <a href="mailto:lickcreekhelibase@gmail.com">lickcreekhelibase@gmail.com</a>													
<b>9. HELICOPTERS</b> (Use Additional Sheets as Necessary)													
FAA N#	TY	MAKE/ MODEL	BASE	START	AVAIL	REMARKS	FAA N#	TY	MAKE/ MODEL	BASE	START	AVAIL	REMARKS
187CH	1	Vertol CH-46	ALW	0830	0900	Bucket	359EV	3	AS-350B3	ALW	0830	0900	Recon, Bucket, PAX, Cargo
12CK	1	Sikorsky SH-3H	ALW	0830	0900	Bucket	353JR	3	AS-350B3	ALW	0830	0900	Recon, Bucket, PSD, PAX, Cargo
625CK	1	S-61N	ALW	0830	0900	Bucket	Unmanned Romeo 322	UAS	DJI M600		Lakeview IHC		
604CK	1	UH-60	ALW	0830	0900	Bucket							



# MEDICAL PLAN (ICS 206 WF) CIIMT 12

1. Incident Name				2. Operational Period					
<b>LICK CREEK/GREEN RIDGE INCIDENT</b>				Date/Time: <b>08/05/2021 (0600) – 08/06/2021 (1800)</b>					
3. EMS / Ambulance Services/Aid Stations									
Name		Location		Frequency/Phone		Advanced Life Support (ALS) Yes No			
<b>MEDICAL UNIT</b>		<b>ICP</b>		<b>COMMAND</b>					
Asotin County Fire District #1		2314 Appleside Blvd. Clarkston, WA		Dial 9-1-1					
Columbia FD #3		111 Patit Road Dayton, WA		Dial 9-1-1					
Lewiston Fire Department		1245 Idaho St. Lewiston, ID		Dial 9-1-1		X			
4. Air Rescue / Air Ambulance Services									
Name		Phone		Type of Aircraft & Capability					
Lifeflight - Lewiston		Call 9-1-1 1-800-232-0911		Helicopter – NO HOIST CAPABILITIES					
Lifeflight – Walla Walla		Call 9-1-1 1-800-232-0911		Helicopter – NO HOIST CAPABILITIES					
Short Haul – McCall / Walla Walla		Contact Air Ops		Helicopter – Short Haul Capable					
5. Hospitals (all times estimated from incident location)									
Name & Level		GPS Datum – WGS 84 Degrees Decimal Minutes		Travel Time Air Gnd		Helipad Yes No		Address	
St. Joseph Regional Level II Cardiac Level II CVA Level III Trauma		Lat:	N 46° 25.000'	5 min	1.5 hrs	208-799-5799	X		415 6 <sup>th</sup> Street Lewiston, ID
		Long:	W 117° 01.460'						
Tri State Memorial Level II Cardiac Level II CVA Level IV Cardiac		Lat:	N 46° 24.125'	5 min	1.5 hrs	509-758-4665	X		1221 Highland Ave Clarkston, WA
		Long:	W 117° 03.330'						
Dayton Memorial Level V Trauma		Lat:	N 46° 18.749'	5 min	1.5 hrs	509-382-9351	X		1012 S. Third Street Dayton, WA
		Long:	W 117° 58.170'						
Walla Walla Providence Medical Center Level I Cardiac Level II CVA Level III Trauma		Lat:	N 46° 18.749'	10 mins	2 hrs	509-529-7608	X		401 W. Poplar Walla Walla, WA 99362
		Long:	W 117° 58.170'						
Legacy Emanuel Level I Trauma Level I Burn Center		Lat:	N 45° 32.668'	2.5 hrs	6 hrs	503-413-2200	X		2801 N. Gantenbein Ave. Portland, OR 97227
		Long:	W 122° 40.293'						
6. Division / Crew Emergency Pre-Plan								<i>Update and discuss with assigned resources daily.</i>	
Fireline EMT / Medic's Division / Branch Location									
Air Hoist site location site: Lat: / Long: / Elevation:									
Helispot: Lat: / Long: / Elevation:									
7. Prepared By (Medical Unit Leader)			8. Date/Time		9. Reviewed By (Safety Officer)			10. Date/Time	
MEDL Brandon Bennewate 			08/04/2021 1600		SOF2 Mike Seymour 			08/04/2021 1600	



# MEDICAL PLAN (ICS 206 WF) CIIMT 12

## Medical Incident Report

**FOR A NON-EMERGENCY INCIDENT, WORK THROUGH CHAIN OF COMMAND TO REPORT AND TRANSPORT INJURED PERSONNEL AS NECESSARY.**

**FOR A MEDICAL EMERGENCY: IDENTIFY ON SCENE INCIDENT COMMANDER BY NAME AND POSITION AND ANNOUNCE "MEDICAL EMERGENCY" TO INITIATE RESPONSE FROM IMT COMMUNICATIONS/DISPATCH.**

**Use the following items to communicate situation to communications/dispatch.**

**1. CONTACT COMMUNICATIONS / DISPATCH** (Verify correct frequency prior to starting report)

*Ex: "Communications, Div. Alpha. Stand-by for Emergency Traffic."*

**2. INCIDENT STATUS:** Provide incident summary (including number of patients) and command structure.

*Ex: "Communications, I have a Red priority patient, unconscious, struck by a falling tree. Requesting air ambulance to Forest Road 1 at (Lat./Long.) This will be the Trout Meadow Medical, IC is TFLD Jones. EMT Smith is providing medical care."*

Severity of Emergency / Transport Priority	<input type="checkbox"/> <b>RED / PRIORITY 1</b> Life or limb threatening injury or illness. Evacuation need is <b>IMMEDIATE</b> <i>Ex: Unconscious, difficulty breathing, bleeding severely, 2° – 3° burns more than 4 palm sizes, heat stroke, disoriented.</i> <input type="checkbox"/> <b>YELLOW / PRIORITY 2</b> Serious injury or illness. Evacuation may be <b>DELAYED</b> if necessary. <i>Ex: Significant trauma, unable to walk, 2° – 3° burns not more than 1-3 palm sizes.</i> <input type="checkbox"/> <b>GREEN / PRIORITY 3</b> Minor Injury or illness. <b>Non-Emergency transport</b> <i>Ex: Sprains, strains, minor heat-related illness.</i>	
Nature of Injury or Illness & Mechanism of Injury		Brief Summary of Injury or Illness <i>(Ex: Unconscious, Struck by Falling Tree)</i>
Transport Request		Air Ambulance / Short Haul/Hoist Ground Ambulance / Other
Patient Location		Descriptive Location & Lat. / Long. <i>(WGS84)</i>
Incident Name		Geographic Name + "Medical" <i>(Ex: Trout Meadow Medical)</i>
On-Scene Incident Commander		Name of on-scene IC of Incident within an Incident <i>(Ex: TFLD Jones)</i>
Patient Care		Name of Care Provider <i>(Ex: EMT Smith)</i>

**3. INITIAL PATIENT ASSESSMENT:** Complete this section for each patient as applicable (start with the most severe patient)

Patient Assessment: See IRPG PAGE 106

Treatment:

**4. TRANSPORT PLAN:**

Evacuation Location (if different): *(Descriptive Location (drop point, intersection, etc.) or Lat. / Long.)* Patient's ETA to Evacuation Location:

Helispot / Extraction Site Size and Hazards:

**5. ADDITIONAL RESOURCES / EQUIPMENT NEEDS:**

*Example: Paramedic/EMT, Crews, Immobilization Devices, AED, Oxygen, Trauma Bag, IV/Fluid(s), Splints, Rope rescue, Wheeled litter, HAZMAT, Extrication :*

**6. COMMUNICATIONS: Identify State Air/Ground EMS Frequencies and Hospital Contacts as applicable**

Function	Channel Name/Number	Receive (RX)	Tone/NAC *	Transmit (TX)	Tone/NAC *
COMMAND					
AIR-TO-GRND					
TACTICAL					

**7. CONTINGENCY: Considerations:** if primary options fail, what actions can be implemented in conjunction with primary evacuation method? Be thinking ahead. .

**8. ADDITIONAL INFORMATION:** Updates/Changes, etc. .

**REMEMBER:** Confirm ETA's of resources ordered. Act according to your level of training. Be Alert. Keep Calm. Think Clearly. Act Decisively. .



# COVID GUIDELINES



NWCG screening Tool

## **MASKS ARE REQUIRED:**

*BRIEFINGS.*

**CAN'T MAINTAIN 6FT SOCIAL DISTANCING OUTSIDE.**

**INDOORS.**

**VEHICLES.** (Example: More than one person in vehicle)

## **MASK WEARING EXCEPTION:**

**ALONE IN AN ENCLOSED SPACE.** (Example: One person in Vehicle)

**ACTIVELY ENGAGED IN FIREFIGHTING ON THE FIRELINE.**

**OUTSIDE AND CAN MAINTAIN 6FT APART.**

**EATING OR DRINKING (6FT SOCIAL DISTANCE)**

PLEASE CONTACT THE GREEN RIDGE COVID  
HOTLINE IF YOU HAVE ANY QUESTIONS ABOUT COVID, SYMPTOMS,  
AND OR FREE TESTING.

**GREEN RIDGE COVID HOTLINE # 971-245-9407**

## GREEN RIDGE FIRE FREE COVID TESTING

1. Test is 100% voluntary. **"HIGHLY RECOMMENDED"**
2. The email address below goes straight to the Covid Task Force and is **HIPPA** (Health Insurance Portability and Accountability Act) Compliant. Also, any phone calls or texts to the Covid Hotline is following HIPPA.
3. Please email: **2021.lick.plans@firenet.gov** or call Covid Hotline: **971-245-9407** to schedule your test.
4. We can test you at ICP or Wooten.
6. The test only takes 30 minutes to get results.
7. Please check with your employer or agency if they want you to test before you Demob.
8. Try to let us know 3-days before your demob day so that we can make it as quick as possible.



## Northwest MAC Group

Northwest Coordination Center  
150 SW Harrison St Suite 400  
Portland OR 97201  
503-808-2720

---

August 3, 2021

**To:** Incident Commanders on Pacific Northwest (PNW) IMTs, IMTs Working in the Geographic Area, and all PNW Agency Administrators

**From:** Chuck Turley, PNW MAC Acting-Chair on Behalf of All PNW MAC Agency Executives

**Subject:** COVID Mitigation Expectations/Requirements

The frequency of COVID exposure and cases is increasing on our PNW wildfire incidents and within support functions. PNW MAC has reviewed the multiple guidance documents provided by CDC, Wildland Fire Medical and Public Health Advisory Team (MPHAT), and federal, state, and local entities. Beginning immediately our expectation and direction is that all PNW incidents and their support functions will implement and enforce the following.

- For resources assigned to an incident within the PNW and for our NW IMTs assigned outside the northwest, wear a mask at all times whether inside or outside, vaccinated or unvaccinated, unless you are working alone or are on the fire line. Having a medical exemption is the only exception.

This direction applies to all levels of incident operations and all aspects of an incident including but not limited to transportation to/from incident, ICPs, spike camps, helibases, tanker bases, ground support units, etc.

Thank you for your vigilance of COVID protections.

Respectfully,

---

Chuck Turley  
PNW MAC Acting-Chair  
Washington Department of Natural Resources

---

Date

---

•Bureau of Land Management  
•U.S. Forest Service  
•U.S. Fish and Wildlife Service  
•National Park Service

•Bureau of Indian Affairs  
•Washington State Fire Marshal  
•Washington State Association of Fire Chiefs  
•Washington State Dept. of Natural Resources

•Oregon Department of Forestry  
•Oregon Fire Chiefs Association  
•Oregon State Fire Marshal



# Human Resource Message

## *Have you checked-in AT HOME yet?*

An important part of taking care of your people is making sure your loved ones at home know how you are doing. This is hard, important work you are doing out here. Make the time to share your efforts with your family back home—they need to know how you are doing—and we need them to support you. ***NO SUCCESS AT WORK IS WORTH A FAILURE AT HOME.***

A part of leadership is caring for the well being of your troops. High morale will produce high results. Encourage your firefighters to check-in at home.

---

## Trainees

A Training Specialist has been set up next to Check-In at the Dayton ICP.

Please use the following QR code to register:



If you have any questions call the Training Specialist at (206) 718-3471. Phone does not accept text messages. E-mail any documentation to **[2021.GreenRidge@firenet.gov](mailto:2021.GreenRidge@firenet.gov)**

Remember to get as much ink in your taskbook as possible **and** get a performance rating (ICS 225) from trainer.



# Virtual Timekeeping Finance Message

<b>Fire Name:</b> Lick Creek	<b>Fire Name:</b> Dry Gulch	<b>Fire Name:</b> Green Ridge
<b>Fire Number:</b> OR-UMF-000658	<b>Fire Number:</b> WA-SES-020655	<b>Fire Number:</b> WA-UMF-000659
<b>Accounting Code:</b> P6N47M (0614) 221 – LAJ	<b>Accounting Code:</b> PNN45S (1522) 221 – LAG	<b>Accounting Code:</b> P6N5AV (0614) 221 – LSL
Email: <a href="mailto:2021.lick.finance@firenet.gov">2021.lick.finance@firenet.gov</a>		<a href="mailto:2021.greenridge.finance@firenet.gov">2021.greenridge.finance@firenet.gov</a>
<b>Finance Phone #'s: (971) 245-0248 or (971) 727-7461</b>		



US Forest Service Fire, Fuels and Aviation Employees charging to B-codes, please remember **to charge any overtime hours to the incident's override and P-code**; B-codes are for Base 8 hours only. Payroll corrections will be required for any overtime charged incorrectly to a B-code. Thank-you.

## Finance Documents Needed upon "Check In" (If Not Already Submitted):

Please email these documents or scan the QR Code below, attach & submit.			
<b>Agency Equipment/ Crews:</b> <ul style="list-style-type: none"><li>Manifest - showing employment type (GS or WG) or AD rates if applicable</li></ul>	<b>Overhead:</b> <ul style="list-style-type: none"><li>AD/Casual Hire Form</li><li>If regular Agency please ensure "GS" or "WG" is written on your first CTR</li></ul>	<b>Contract Equipment/ Contract Crews:</b> <ul style="list-style-type: none"><li>Agreement</li><li>Manifest</li><li>Resource Order</li><li>Inspections</li></ul>	<b>Cooperator:</b> <ul style="list-style-type: none"><li>Cooperative Agreement</li><li>Resource Order</li></ul>

## Please submit your CTR/Shift Tickets using the QR code or email address below:

Don't Forget to put your RO # on your CTR/Shift Ticket – Thank You

<b>Lick Creek/Dry Gulch Finance Email:</b> <a href="mailto:2021.lick.finance@firenet.gov">2021.lick.finance@firenet.gov</a>	<b>Green Ridge Finance Email:</b> <a href="mailto:2021.greenridge.finance@firenet.gov">2021.greenridge.finance@firenet.gov</a>
	
<b>Include the Word "Time" in the Subject Line of the Email</b>	

## MISSING TIME:

RO	Name	Dates
A-6	T3 HELO CREW, A-119 CREW	
A-6.1	Nathan Gilmore- HMGB	7/16-7/24
A-6.2	Chris Kendrick- HMGB	7/16-7/24
A-6.3	Mike Armstrong- HECM	7/16-7/24
A-41		
C-83	MP Forestry - need RO, contract, manifest	
E-26	KL Farms - see Finance	
E-157	7/31 CTR shows end time only	
E-173	WT - need RO	
O-5.5	Mentzer	7/28-8/4
O-79	Evans	7/30-8/4
O-123	Dietz	7/28-8/4
O-171	Welker	7/28-8/4
O-333	Turner - checkin with Finance	

# ICP LOGISTICS NOTES

Supply: 0530-2200

Ordering: 0600-2100

Communications: 0600-2200

Food: Breakfast: 0600

Dinner: 1700 for ICP staff & 2000 for crews

Refer Trailer: 0530-0900 1130-1330 1630-2100

Showers: 0500-1200 & 1400-2200

Laundry service: Open 24/7. 24hr turn around.

Ground Support: 0600-2200

Mechanic: 0700-2200

Weed Wash: 0700-2000

Fuel: @ ICP (County Yard 415N. Guernsey Ave.) 0700-2000

@ Wooten: 0700-2000

Medical: 0700-2200

## PLEASE DO:

-Note & mark the location (DIV, intersection, DP, camp, latt/long) of equipment: pumps, hose, tanks, etc. and please bring it to the attention of the DIV and ask them to report to Logistics.

-Sleep in marked sleeping areas only.

-Pick up after yourself: trash, cigarette butts, etc.

-Treat other people the way you want to be treated.

## PLEASE DO NOT:

-Park in front of port-a-potties.

-Park in front of fire hydrants.

-Park in the street in front of chow distribution.

-Leave your trash near port-a-potties.....it ONLY goes in the dumpster!



# DEMOB INSTRUCTIONS

Demob steps for all resources must be done in order:

Proceed to **Dayton High School**, 614 S. 3<sup>rd</sup> Street, Dayton, WA.

1. All line resources must have a post-incident inspection and complete a **Weed Wash**.
2. Turn in radios to the **Communications Unit**.
3. Turn any checked out items to the **Supply Unit**.
4. **Finance** needs you to get your final shift ticket signed by your supervisor before going to close out your time. Then take it to Finance and finalize your time.
5. **Demobilization Unit** will be your last stop. Make sure they know your travel times. If you are going to rest overnight let them know where you plan to stay.

**\*\*\* FINAL TRAVEL CTR'S MUST BE SIGNED BY YOUR SUPERVISOR ON THIS INCIDENT! FINANCE CANNOT SIGN THEM FOR YOU! \*\*\***

## TENTATIVE DEMOBS

8/5/2021

EQUIPMENT	TIME	TYPE	RESOURCE NAME
E-1	0700	WTT2	A-1 CONSTRUCTION GR
E-70	0715	FEL1	SWANSON LOGGING DG
E-72	0730	FEL1	SWANSON LOGGING DG
E-73	0745	FEL2	SWANSON LOGGING DG
E-75	0800	SKD1	SWANSON LOGGING DG
E-76	0815	SKD1	SWANSON LOGGING DG

### OVERHEAD

O-164	0700	FMOD	UNITED FALLERS GR
O-165	0715	FMOD	UNITED FALLERS GR
O-170	0730	SEC2	COLE SHIRLEY GR
O-171	0740	SEC2	NATHAN WELKER GR

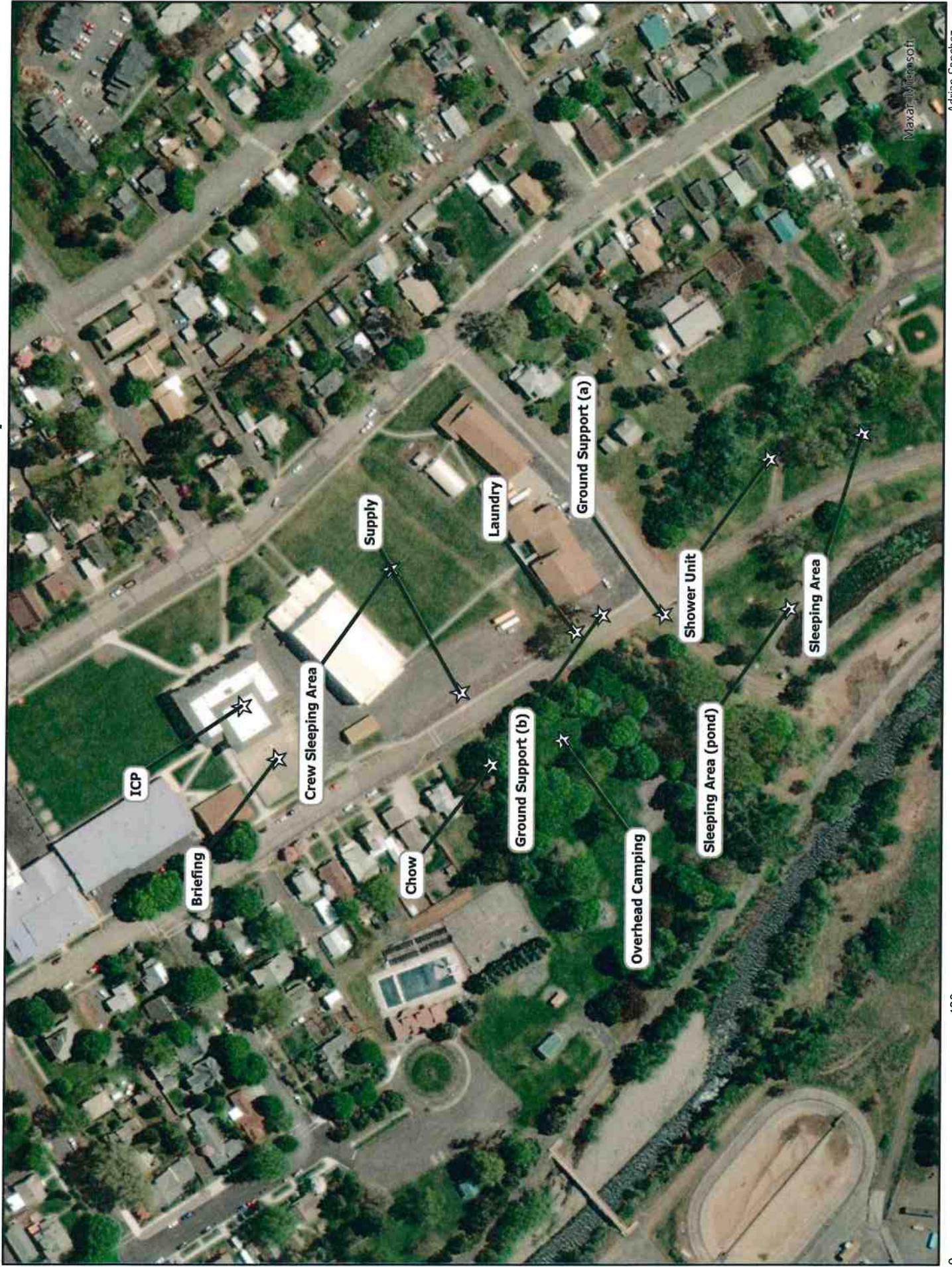
## TENTATIVE DEMOB

8/6/2021

OVERHEAD	TIME	TYPE	RESOURCE NAME
O-147		TFLD	MATTJONES GR
O-151		FACL	JAMES BARHAM GR
O-212		READ	WILLIAM MARQUARDT LC
O-242		AADM	ED GUZMAN LC

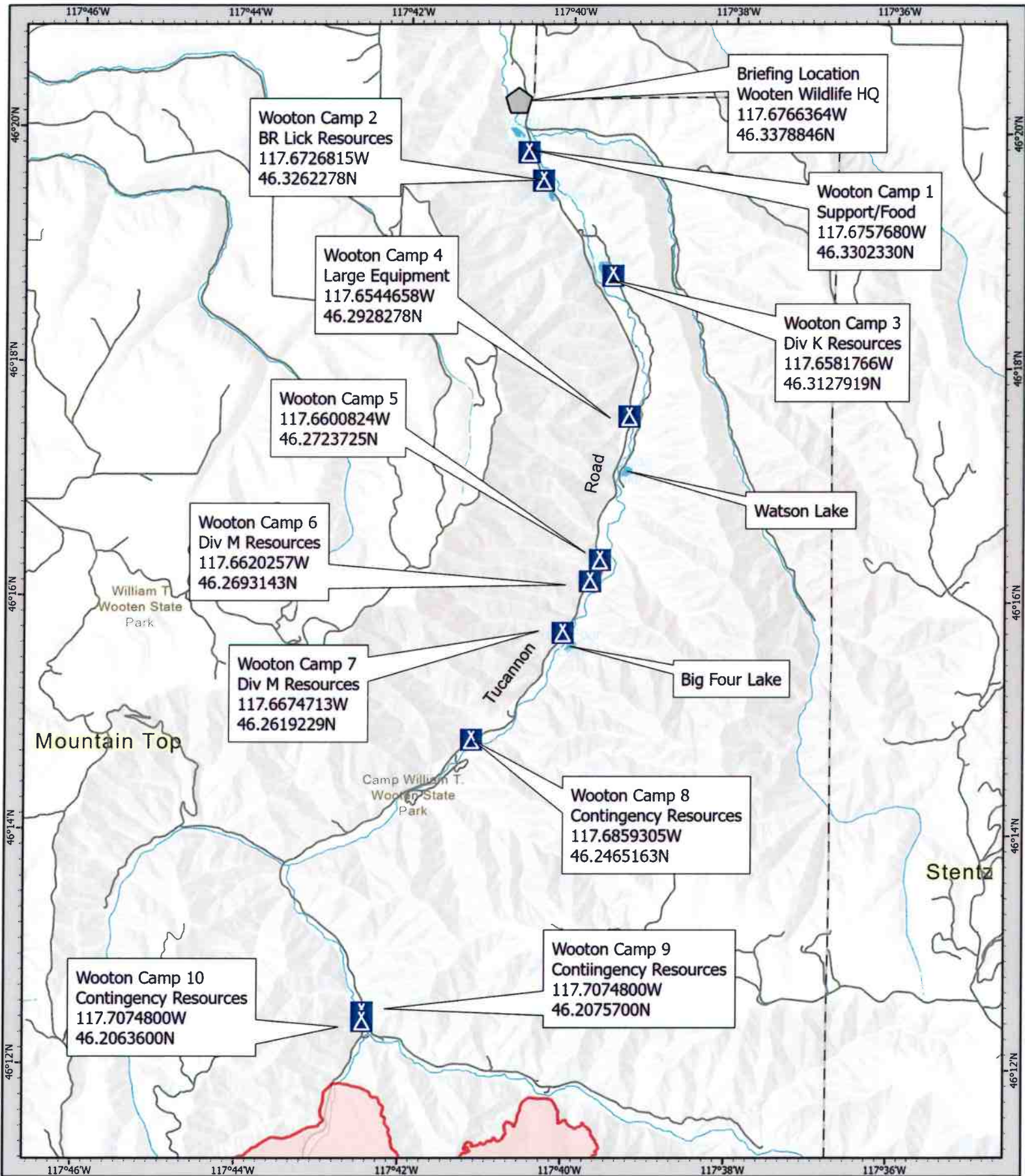


# Base Camp Facilities Map



0 400 Feet





Camp  
 Wildfire Daily Fire Perimeter  
 Roads  
 Lat/Long in Decimal Degrees

**Wooten Camp Area**  
**Green Ridge**  
 OR-UMF-000659

8/4/21

1:75,000 NAD83 UTM 11N  
 0 0.5 1 1.5 Miles  
 Prepared by CRIMT12 B-3 2021 10.47





Weed Wash and Fuel

Weed Wash and Fuel at County Mtnc Yard  
 415 N Guernsey Ave, Dayton WA  
 Fire Traffic One Way Only  
 Transports must exit to 4th Street As Shown  
 Open 0700-2000 hours

ICP

-  One Way
-  Route

## Weed Wash Map

Green Ridge

OR-UMF-00659

117°58'W



1:8,000

NAD83 UTM 11N

0.25







