

Lick Creek – Green Ridge Fires

OR-UMF-000658 / OR-UMF-000659
P6N5AV (0614)

Send TIME to: 2021.greenridge.finance@firenet.gov

Thursday, August 12, 2021 – Friday, August 13, 2021

Operational Period 0600-0600



Rocky Mountain IMT2 Black

Troy Hagan, ICT2 — Bill Waln, Deputy ICT2

Public Fire Information
2021.greenridge@firenet.gov

IAP/Map/Demob/Check-in/Etc

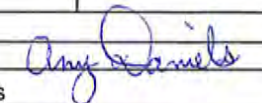


<https://tinyurl.com/jtb3wzk6>

Communications 24-Hour
Emergency Number:

971-727-7965

ORGANIZATION ASSIGNMENT LIST (ICS 203)

1. Incident Name: LICK CREEK/GREEN RIDGE		2. Operational Period: Date From: 8/12/2021 Time From: 0600		Date To: 8/13/2021 Time To: 0600	
3. Incident Commander(s) and Command Staff:			7. Operation Section:		
IC	Troy Hagan	Operations Chief	Shay Rogge, Brad Pietruszka (T)		
Deputy	Bill Wain	Planning Ops			
Safety Officer	Rob Pelton, Pat Medina, Eric White (T), Eric Adams (T)				
Medical	Kevin Ratzmann, Jeff Basamanowicz, Stephanie McGovern (T)		Branch I	Rodney Redinger, Jay Godson (T)	
Information Officer	Dawn Sanchez, Brant Porter, Olivia Bruce (T)	Division/Group	G/K	Nate Kerschner, Isaiah Jimenez (T)	
Liaison Officer	Sam Carle, Mark Neely, Bonnie Gibbons (T)	Division/Group	M	Brandon Bonenberger, Daniel Kamakani (T)	
4. Agency/Organization Representatives:		Division/Group	LICK	Jon Stonelake, Neal McCann (T)	
Agency/Organization	Name	Division/Group	NORTH	Nick Collard, Dave Collins (T)	
USFS AADM	Anthony Botello				
USFS AREP	Susan Piper				
WA DNR	Wyatt Leighton, Tom Schoenfelder		Branch II	Matt Norden, Deon Steinle (T)	
Asotin Co Fire Dist 1	Noel Hardin	Division/Group	A	Tom Kenny, Brad Bryant (T)	
Columbia Co Fire 3	Jeromy Phinney	Division/Group	P	Ian Barrett, Aaron Woodham (T)	
Garfield Co Fire Dist 1	James Cleveland				
WFS	Devin McCosh		NIGHT	Troy Mueller	
WDFW - LEO	Paul Mosman				
Covid Liaison	Cass Monroe, Steve Medina	Division/Group	NIGHT	Chris Rokosh, Jeff Corser (T)	
5. Planning Section:		8. Air Operations Branch			
Chief	Rocco Snart, Heather Gonzalez, Peter Barth	Air Operations Branch Director		Carolyn Blatz, Matt Lingenfelter (T)	
		Air Support Group Supervisor		Ken Ostrom	
Resource Unit	Kellie Stover, Amy Daniels, Rick Lancaster (T)	Air Tactical Group Supervisor		Tim Haas	
		Helibase Manager		Lee Steward, Austin McDonald (T)	
Situation Unit	Tara Umphries, Brenda Wasielewski (T)				
Demobilization Unit	Dave Farmer	9. Finance/Administration Section:			
Incident Meteorologist	Mary Wister	Chief	Mavis Biastoch, Patty Wyatt		
Status Check-In	Rose Long	Time Unit	Sonia Anderson, Kayla Clark		
Fire Behavior	Larry Long	Cost Unit	Kristie Bowen (T)		
Documentation Unit	Spencer Pollock (V)	Compensation Unit	Pearl Cowan		
GIS Specialist	Sarlyn McCormick, Jean Olson, Faith Dziedzic, Sarah Strehle (T)				
Strategic Planner					
Long Term Analyst	Krista Gollnick (V), Kirk Will (T)				
Training Specialist	Amy Daniels, Heather Gonzalez (T)				
6. Logistics Section					
Chief	Wally Leander, Randy Spiering, Darin Gehring				
Ground Support Unit	Jamie Rietz				
Communications	Jim Midyett				
Facilities - ICP	Monty Bollock, Ken Hehr, David Brown				
Facilities - Rose Spike	Mike Kinne				
IT Specialist	Kevin Watts, Jason Reynolds (T)				
Supply Unit	Robin Brooks, Nate Haynes (T)				
Food Unit	Clyde Leggins				
Security	Darrell Hanson, Clyde Harris (T)				
Prepared By: Name: Amy Daniels		Position/Title: RESL		Signature: 	
ICS 203		Date/Time: 8/11/2021 2100 hours		NIMS IAP	



Lick Creek / Green Ridge Weather Forecast



FORECAST NO: 32
FORECAST FOR: Thursday Day and Night Shift
SHIFT DATE: 8/12/2021
DATE AND TIME ISSUED: 8/11/2021 at 1900 PDT

NAME OF FIRE: Lick Creek/Green Ridge
UNIT: OR-UMF
SIGNED: *Mary Wister* - Incident Meteorologist
541-377-9905 (cell) / mary.wister@noaa.gov

...Hot and Dry the Next Several Days...

WEATHER DISCUSSION: A dry and stable air mass will reside through Saturday. It will be hot with temperatures reaching the 100 degree mark at elevations below 3500 feet. The humidity will be low, and poor RH recoveries will extend the burn period through the night. Stable conditions and light winds will result in smoky conditions with reduced visibility, especially in Branch II.

TODAY:

WEATHER: Mostly sunny. Smoky, mainly in Branch II.
MAXIMUM TEMPERATURE: 83-88° above 5000 feet. 95-100° valley bottoms.
MINIMUM RELATIVE HUMIDITY: 20-25% above 5000 feet. 15-20% valley bottoms.
20-FOOT RIDGETOP WINDS: Light and variable in the morning...becoming North-Northwest 5-10 mph.
GREEN RIDGE CREEKS: Upslope/Upcanyon 2-5 mph.
CHANCE OF WETTING RAIN ($\geq 0.10''$): 0%. .
HAINES INDEX: 3 (Very Low)
INVERSION/STABILITY: Low level inversion lifts around 0900. Mid-level inversion.

TONIGHT:

WEATHER: Mostly clear. Smoky.
MINIMUM TEMPERATURE: 64-69° above 5000 feet. 53-58° valley bottoms.
MAXIMUM RELATIVE HUMIDITY: 30-35% above 5000 feet. 70-75% valley bottoms.
20-FOOT RIDGETOP WINDS: North-Northwest wind 5-10 mph with strongest winds in the evening.
GREEN RIDGE CREEKS: Downslope/Down canyon 2-5 mph.
CHANCE OF WETTING RAIN ($\geq 0.10''$): 0% .
LIGHTNING ACTIVITY LEVEL: 1.
HAINES INDEX: 3 (Very Low)
INVERSION/STABILITY: Stable. Low and mid-level inversion.

FRIDAY:

WEATHER: Mostly sunny. Smoky.
MAXIMUM TEMPERATURE: 85-90° above 5000 feet. 98-102° valley bottoms.
MINIMUM RELATIVE HUMIDITY: 18-23% above 5000 feet. 12-17% valley bottoms.
20-FOOT RIDGETOP WINDS: Light and variable in the morning...becoming North-Northwest 5-10 mph.
GREEN RIDGE CREEKS: Upslope/Upcanyon 2-5 mph.
CHANCE OF WETTING RAIN ($\geq 0.10''$): 0% .
HAINES INDEX: 3 (Very Low)
INVERSION/STABILITY: Low level inversion lifts around 0900. Mid-level inversion.

FIRE BEHAVIOR FORECAST

FORECAST NUMBER: 17	TYPE OF FIRE: Wildfire
FIRE NAME: Lick Creek & Green Ridge Fires	OPERATIONAL PERIOD: 08-12-2021 24 Hour
DATE ISSUED: 08-11-2021	TIME ISSUED: 2000
UNIT: Umatilla NF OR-UMF-000658 & 000659	SIGNED: //s// Larry Long FBAN

INPUTS

****See the attached Incident Weather Forecast****

OUTPUTS FIRE BEHAVIOR

GENERAL: Fire behavior should be moderate again today with the lower wind speeds. The lower wind speeds will result in slower rates of spread and decreased fire intensity. But, you can expect torching and spotting throughout the day and into the night shift due to the low RH's and high temperatures. We are expecting that the fuel moistures will drop into a critical stage this weekend and this will result in an increase in fire activity through Sunday and Monday.

Probability of ignition is 90% with spotting distances of 1000 feet possible. Haines Index 3

1-hour fuel moistures: 3%, 10 hours at 4%, 100 hours at 7%, 1000-hour fuels are ~8 % and live fuel moistures are at around 75-95%. ERCs are above the 90th percentile.

Fuel model	Max. Flame Length	Day Shift ROS	Night Shift ROS	Spotting
Timber little and understory TU5/TL4	8-9 ft.	9-13 ch/hr	7-10 ch/hr	.2 miles
Short Grass/Shrub – GR4	4-5 ft.	15-25 ch/hr	5-8 ch/hr	.2 miles

SPECIFIC:

Green Ridge: The fire will continue to progress up and out of the drainages, pushed by an upslope wind of 2-5 MPH. The fire will be active in the heavier concentrations of fuels as the winds surface causing torching and spotting. Conditions should be favorable for burnout operations in Division M. The active line in divisions A & P will continue to move to the south and southeast. The Lick Creek fire will provide an effective barrier towards the east.

Lick Creek: The NNW winds today should again be favorable by pushing the heat and smoke into the interior. Expect interior fuels to continue to consume and put off smoke.

Night Division: Due to the late burning periods, anticipate daytime burning conditions to continue well into the late evening and continuing until the downslope winds set up and/or the humidity recovers.

AIR OPERATIONS:

Heavy smoke may hamper air operations.

SAFETY

Local Thresholds – **WATCHOUT:** Combinations of any of these factors can greatly increase fire behavior:

Elevations	20' Winds +15 mph	RH <20%	Temp +80°	1000hr Fuel <7%
3000 –5500'	NNW 5-10 mph	15-20%	95-100°	~8%

ASSIGNMENT LIST (ICS 204 WF)

CONTROLLED UNCLASSIFIED
INFORMATION//BASIC

1. Incident Name:	2. Operational Period:	3. Branch	Division
LICK CREEK/GREEN RIDGE	Date From: 08/12/21 Date To: 08/13/21 Time From: 0600 Time To: 0600	I	G/K

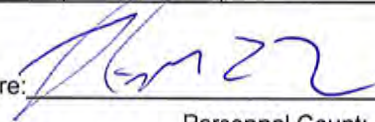
4. Operations Personnel:			
Operations Section Chief: Shay Rogge, Brad Pietruszka (T)	Planning Ops		
Branch Director: Rodney Redinger, Jay Godson (T)	Safety: Rob Pelton, Eric White (T)		
Division/Group Supervisor: Nate Kerschner, Isaiah Jimenez (T)	Air Attack: Tim Haas		

5. Resources Assigned:							
Resource Identifier	ALS	LWD	Leader	Personnel	Request #	Hours	Reporting Location
TFLD(T) Kramer GR		8/12	Kramer	1	O-278	0600-2200	Dayton Spike
HC2 Mosqueda Ref GR		8/17	Equihua	20	C-45	0600-2200	Dayton Spike
ENG4 Hi Country GR		8/19	Burnette	3	E-127	0600-2200	Dayton Spike
ENG4 Lone Wolf Wildfire GR		8/12	Flegel	3	E-129	0600-2200	Dayton Spike
WTT2 Christman Trucking GR		8/20	Blazek	1	E-2	0600-2200	Dayton Spike
WTT2 Overpeck GR		8/17	Melton	1	E-3	0600-2200	Dayton Spike
DOZ2 Alpine GR		8/17	Briggs	2	E-93	0600-2200	Dayton Spike
DOZ3 Pine Mountain GR		8/13	Bruiland	1	E-175	0600-2200	Dayton Spike
FEL1 Bruce Young GR		8/22	McCleran	2	E-79	0600-2200	Dayton Spike
MAST Tucannon Outfitters GR		8/21	Martin	1	E-107	0600-2200	Dayton Spike
SOFR(T) Lowry GR		8/16	Lowry	1	O-337	0600-2200	Dayton Spike
EMTF Holborn GR		8/17	Holborn	1	O-281	0600-2200	Dayton Spike
EMTF Merrell GR		8/18	Merrell	1	O-359	0600-2200	Dayton Spike

6. Work Assignments:
 Continue contingency dozer line and handline from repeater to Patrick Grade Road.
 Continue to improve where needed on 46 Road north of Godman staging to DP-220 DIV M break.
 Patrol and mop up from DP-220 to Godman staging.

7. Special Instructions:
 Adventure Medics (E-77; LWD 8/21) located @ DP-240 Lead READ Will Marquardt: 530-402-6202
 RAT1 (E-138; LWD 8/13) located on Skyline Drive
 DIVS need to identify equipment to be sent in an event of an IA within TFR. Operations will identify closest resources to respond to new incident.
 Please ensure 3/32" fish screens are used at all draft sites in Punjab Creek, Touchet, and Tucannon Rivers.

8. Communications							
Name	Ch	Function	Rx Freq	Rx Tone	Tx Freq	Tx Tone	Notes
SEE ICS 205 COMM PLAN							

9. Prepared by: Name: Kellie Stover, Amy Daniels, Rick Lancaster(T) RESL Signature: 

ICS 204 Date/Time: 8/11/2021 2200 Personnel Count: 38

ASSIGNMENT LIST (ICS 204 WF)

CONTROLLED UNCLASSIFIED
INFORMATION//BASIC

1. Incident Name:	2. Operational Period:	3. Branch	Division
LICK CREEK/GREEN RIDGE	Date From: 08/12/21 Date To: 08/13/21 Time From: 0600 Time To: 0600	I	M
4. Operations Personnel:		Page 1 of 2	

Operations Section Chief: Shay Rogge, Brad Pietruszka (T)	Planning Ops
Branch Director: Rodney Redinger, Jay Godson (T)	Safety: Rob Pelton, Eric White (T)
Division/Group Supervisor: Brandon Bonenberger, Daniel Kamakani (T)	Air Attack: Tim Haas

5. Resources Assigned:							
Resource Identifier	ALS	LWD	Leader	Personnel	Request #	Hours	Reporting Location
TFLD(T) Bowen		8/20	Bowen	1	O-463	0600-2200	Wooten Camp
TFLD(T) Dary		8/21	Dary	1	O-460	0600-2200	Wooten Camp
HC1 Silver City IHC GR		8/20	Romero	21	C-96	0600-2200	Rose Spike
HC2IA UMF Crew 3		8/21	Wagner	20	C-104	0600-2200	Rose Spike
HC2IA Vet Crew		8/20	Leggett	18	C-105	0600-2200	Rose Spike
HC2 Blue Mountain GR		8/17	Perez	20	C-43	0600-2200	Wooten Camp
ENG4 Chewack LC		8/17	Stark	3	E-85	0600-2200	Wooten Camp
ENG4 David Carroll GR		8/13	Garcia	3	E-113	0600-2200	Wooten Camp
ENG6 Earth Industries		8/25	Voss	3	E-246	0600-2200	Wooten Camp
WTS2 Panther DG		8/18	Davis	1	E-45	0600-2200	Wooten Camp
WTS2 Lovato GR		8/14	Lovato	1	E-135	0600-2200	Wooten Camp
WTS2 Rahi GR		8/19	Rahi	1	E-136	0600-2200	Wooten Camp
WTS2 Alder Creek Fire GR		8/14	Beaman	1	E-169	0600-2200	Wooten Camp
WTS2 Able 2 GR		8/14	Smith	1	E-174	0600-2200	Wooten Camp
WTS3 JTS 2 GR		8/20	Elam	1	E-172	0600-2200	Wooten Camp

6. Work Assignments:
 Hold handline from H-33 to the DIV K/M break.
 Prep for firing and communicate with Operations prior to beginning ignitions.
 Coordinate with other Divisions for additional holding resources.
 Improve handlines where possible.
 Secure spot fires north of DIV K/M containment lines.

7. Special Instructions:
 REMS 10 (E-185; LWD 8/13) located @ H-36 Lead READ Will Marquardt: 530-402-6202
 Front Line Medical (E-60; LWD 8/20) located @ DP-220; Wilderness Medics (E-39; LWD 8/12) located @ DP-17
 FOBS Lyon +3 will be in the Division.
 DIVS to identify equipment to be sent in an event of an IA within TFR. Operations will identify closest resources to respond to new incident.
 Please ensure 3/32" fish screens are used at all draft sites in Punjab Creek, Touchet, and Tucannon Rivers.
 Operational briefing to be broadcast at Wooten Camp at 0630. See IAP for details.

8. Communications

Name	Ch	Function	Rx Freq	Rx Tone	Tx Freq	Tx Tone	Notes
SEE ICS 205 COMM PLAN							

9. Prepared by: Name: Kellie Stover, Amy Daniels, Rick Lancaster(T) RESL

Signature: _____

ICS 204 Date/Time: 8/11/2021 2200 Personnel Count: 96

ASSIGNMENT LIST (ICS 204 WF)

CONTROLLED UNCLASSIFIED
INFORMATION//BASIC

1. Incident Name:	2. Operational Period:	3. Branch	Division
LICK CREEK/GREEN RIDGE	Date From: 08/12/21 Date To: 08/13/21 Time From: 0600 Time To: 0600	I	M
4. Operations Personnel:		Page 2 of 2	

Operations Section Chief: Shay Rogge, Brad Pietruszka (T)	Planning Ops
Branch Director: Rodney Redinger, Jay Godson (T)	Safety: Rob Pelton, Eric White (T)
Division/Group Supervisor: Brandon Bonenberger, Daniel Kamakani (T)	Air Attack: Tim Haas

5. Resources Assigned:							
Resource Identifier	ALS	LWD	Leader	Personnel	Request #	Hours	Reporting Location
FMOD Mill Creek GR		8/20	Johnson	2	O-442	0600-2200	Wooten Camp
HEQB Beehler		8/16	Beehler	1	O-501	0600-2200	Wooten Camp
HEQB(T) Chris Carney		8/21	Carney	1	O-458	0600-2200	Wooten Camp
MAST Hayden 2 GR		8/13	Hayden	2	E-72	0600-2200	Wooten Camp
GRD Alvord GR		8/13	Davis	2	E-132	0600-2200	Wooten Camp
SOFR Grant GR		8/13	Grant	1	O-294	0600-2200	Wooten Camp
SOFR Foco GR		8/18	Foco	1	O-368	0600-2200	Wooten Camp
EMTF Jonassen GR		8/16	Jonassen	1	O-196	0600-2200	Wooten Camp

6. Work Assignments:
 Hold handline from H-33 to the DIV K/M break.
 Prep for firing and communicate with Operations prior to beginning ignitions.
 Coordinate with other Divisions for additional holding resources.
 Improve handlines where possible.
 Secure spot fires north of DIV K/M containment lines.

7. Special Instructions:
 REMS 10 (E-185; LWD 8/13) located @ H-36 Lead READ Will Marquardt: 530-402-6202
 Front Line Medical (E-60; LWD 8/20) located @ DP-220; Wilderness Medics (E-39; LWD 8/12) located @ DP-17
 FOBS Lyon +3 will be in the Division.
 DIVS to identify equipment to be sent in an event of an IA within TFR. Operations will identify closest resources to respond to new incident.
 Please ensure 3/32" fish screens are used at all draft sites in Punjab Creek, Touchet, and Tucannon Rivers.
 Operational briefing to be broadcast at Wooten Camp at 0630. See IAP for details.

8. Communications							
Name	Ch	Function	Rx Freq	Rx Tone	Tx Freq	Tx Tone	Notes
SEE ICS 205 COMM PLAN							

9. Prepared by: Name:	Kellie Stover, Amy Daniels, Rick Lancaster(T)	RESL	Signature:
ICS 204	Date/Time: 8/11/2021 2200	Personnel Count: 11	

ASSIGNMENT LIST (ICS 204 WF)

CONTROLLED UNCLASSIFIED
INFORMATION//BASIC

1. Incident Name: LICK CREEK/GREEN RIDGE	2. Operational Period: Date From: 08/12/21 Date To: 08/13/21 Time From: 0600 Time To: 0600	3. Branch I	Division LICK
---	---	------------------------------	--------------------------------

4. Operations Personnel:		Planning Ops
Operations Section Chief: Shay Rogge, Brad Pietruszka (T)		Safety: Rob Pelton, Eric White (T)
Branch Director: Rodney Redinger, Jay Godson (T)		Air Attack: Tim Haas
Division/Group Supervisor: Jon Stonelake, Neal McCann (T)		

5. Resources Assigned:							
Resource Identifier	ALS	LWD	Leader	Personnel	Request #	Hours	Reporting Location
TFLD(T) Walters GR		8/16	Walters	1	O-329	0600-2200	Wooten Camp
STEN Cwiak GR		8/14	Cwiak	1	O-300	0600-2200	Wooten Camp
SMOD Williams 7-1		8/25	Sweeney	10	O-520	0600-2200	Rose Spike
ENG4 Flashback Fire GR		8/12	Ribich	3	E-131	0600-2200	Wooten Camp
ENG4 Thunderbolt GR		8/13	Grant	3	E-160	0600-2200	Wooten Camp
ENG6 Flashover GR		8/13	Gilmore	2	E-162	0600-2200	Wooten Camp
WTS2 Ash Kickers DG		8/23	Waldron	1	E-15	0600-2200	Wooten Camp
WTS2 Minam River DG		8/13	Henderson	1	E-40	0600-2200	Wooten Camp
WTS2 Huffman GR		8/20	Huffman	1	E-167	0600-2200	Wooten Camp
WTS2 Martin GR		8/15	Martin	1	E-173	0600-2200	Wooten Camp
WTS3 JTS 1 GR		8/17	Elmer	1	E-170	0600-2200	Wooten Camp
FMOD A&E Tree GR		8/19	Wilke	1	O-118	0600-2200	Wooten Camp

6. Work Assignments:
 Patrol and mop up as needed to secure fire's edge along the Lick/M division break.
 Periodic patrols of the southern portion of the Lick fire. Continue to assist Division M with water support as needed.
 Assess and implement structure protection in the Stentz Summer Group Home Development.
 Look for and suppress spot fires where safe to do so.

7. Special Instructions:
 TFLD Severs (519-780-8736). Local resource may be in the Division. Lead READ Will Marquardt: 530-402-6202
 Divisions to identify equipment to respond to an IA within the TFR. Operations will identify closest resources to respond to a new incident.
 Please make sure 3/32" fish screens are used at all draft sites in Punjab Creek, Touchet, and Tucannon Rivers.
 Operational briefing to be broadcasted at Wooten Camp at 0630. See IAP for details.

Name	Ch	Function	Rx Freq	Rx Tone	Tx Freq	Tx Tone	Notes
SEE ICS 205 COMM PLAN							

9. Prepared by: Name:	Kellie Stover, Amy Daniels, Rick Lancaster(T)	RESL	Signature:
------------------------------	---	------	------------

ASSIGNMENT LIST (ICS 204 WF)

CONTROLLED UNCLASSIFIED
INFORMATION//BASIC

1. Incident Name:	2. Operational Period:	3. Branch Division	
LICK CREEK/GREEN RIDGE	Date From: 08/12/21 Date To: 08/13/21 Time From: 0600 Time To: 0600	I	NORTH

4. Operations Personnel:	
Operations Section Chief: Shay Rogge, Brad Pietruszka (T)	Planning Ops
Branch Director: Rodney Redinger, Jay Godson (T)	Safety: Rob Pelton, Eric White (T)
Division/Group Supervisor: Nick Collard, Dave Collins (T)	Air Attack: Tim Haas

5. Resources Assigned:							
Resource Identifier	ALS	LWD	Leader	Personnel	Request #	Hours	Reporting Location
TFLD Mondragon		8/22	Mondragon	1	O-421	0600-2200	Rose Spike
WTS2 MVP Team DG		8/16	Konrad	1	E-48	0600-2200	Rose Spike
WTS2 Green Mountain GR		8/17	Stevens	1	E-168	0600-2200	Rose Spike
WTS2 Hek Jones GR		8/14	Long	1	E-171	0600-2200	Rose Spike
FMOD Swedberg		8/22	Wadley	1	O-439	0600-2200	Rose Spike
FMOD Woodworth GR		8/20	Woodworth	2	O-441	0600-2200	Rose Spike
DOZ2 Overpeck GR		8/18	Overpeck	2	E-4	0600-2200	Rose Spike
DOZ3 Bruce Young GR		8/15	Johnson	2	E-85	0600-2200	Rose Spike
DOZ3 Traverse GR		8/13	Wilcox	2	E-177	0600-2200	Rose Spike
DOZ3 Kiser & Kiser 1 GR		8/15	Kiser	1	E-178	0600-2200	Rose Spike
DOZ3 Kiser & Kiser 2 GR		8/15	Mackay	1	E-179	0600-2200	Rose Spike
FEL2 Wyeast GR		8/14	Sandoz	2	E-102	0600-2200	Rose Spike
MAST Bruce Young GR		8/16	Gentry	2	E-69	0600-2200	Rose Spike
MAST Eagle CAP GR		8/15	Pierce	2	E-70	0600-2200	Rose Spike
CHIP JML		8/23	Jasiel	3	E-241	0600-2200	Rose Spike
SOFR Foco GR		8/18	Foco	1	O-368	0600-2200	Rose Spike

6. Work Assignments:
 Complete contingency line along Abels ridge from the 40 road to Tucannon road.
 Construct contingency line on the 4016 road from the 40 road to the Lick fire.
 Coordinate with READ's with contingency line construction.
 Communicate with Division Supervisors for Holding resources as needed.

7. Special Instructions:

Lead READ Will Marquardt: 530-402-6202

DIVS to identify equipment to be sent in an event of an IA within TFR. Operations will identify closest resources to respond to new incident. Please make sure 3/32" fish screens are used at all draft sites in Punjab Creek, Touchet, and Tucannon Rivers. Operational briefing to be broadcast at Rose Spike at 0630. See IAP for details.

8. Communications							
Name	Ch	Function	Rx Freq	Rx Tone	Tx Freq	Tx Tone	Notes
SEE ICS 205 COMM PLAN							

9. Prepared by: Name:	Kellie Stover, Amy Daniels, Rick Lancaster(T)	RESL	Signature:
ICS 204	Date/Time: 8/11/2021 2200		Personnel Count: 25

ASSIGNMENT LIST (ICS 204 WF)

CONTROLLED UNCLASSIFIED
INFORMATION//MITTENS

1. Incident Name:	2. Operational Period:	3. Branch	Division
LICK CREEK/GREEN RIDGE	Date From: 08/12/21 Date To: 08/13/21 Time From: 0600 Time To: 0600	II	A

4. Operations Personnel:

Operations Section Chief: Shay Rogge, Brad Pietruszka (T)	Planning Ops
Branch Director: Matt Norden, Deon Steinle (T)	Safety: Rob Pelton, Eric White (T)
Division/Group Supervisor: Tom Kenny, Brad Bryant (T)	Air Attack: Tim Haas

5. Resources Assigned:							
Resource Identifier	ALS	LWD	Leader	Personnel	Request #	Hours	Reporting Location
TFLD Setzer GR		8/12	Setzer	1	O-289	0600-2200	Dayton Spike
ENG4 Alder Creek 1 GR		8/13	Paz	3	E-150	0600-2200	Dayton Spike
ENG4 Alder Creek 2 GR		8/15	Stewart	3	E-164	0600-2200	Dayton Spike
ENG5 West Coast 2 GR		8/12	Miller	3	E-130	0600-2200	Dayton Spike
ENG6 AZ E161 LC		8/17	Jones	3	E-105	0600-2200	Dayton Spike
ENG6 Rock Creek GR		8/14	Mitchell	3	E-111	0600-2200	Dayton Spike
SOFR(T) Lowry GR		8/16	Lowry	1	O-337	0600-2200	Dayton Spike

6. Work Assignments:
 Continue to improve line where needed from DIV A/G break east to DIV A/S break.
 Take action as needed to ensure that existing structures and infrastructures do not sustain further damage.
 Provide for structure protection to Little Turkey Tail Recreation Residence Area.

7. Special Instructions:
 Fireline Medics (E-59; LWD 8/14) located @ Wooten Camp 2 Lead READ Will Marquardt: 530-402-6202
 Adventure Medics (E-77; LWD 8/21) located @ DP-240; RAT1 (E-138; LWD 8/13) located on Skyline Drive
 DIVS to identify equipment to be sent in an event of an IA within TFR. Operations will identify closest resources to respond to new incident.
 Please ensure 3/32" fish screens are used at all draft sites in Punjab Creek, Touchet, and Tucannon Rivers.

8. Communications:

Name	Ch	Function	Rx Freq	Rx Tone	Tx Freq	Tx Tone	Notes
SEE ICS 205 COMM PLAN							

9. Prepared by: Name: Kellie Stover, Amy Daniels, Rick Lancaster(T) RESL Signature:

ICS 204 Date/Time: 8/11/2021 2200 Personnel Count: 17

ASSIGNMENT LIST (ICS 204 WF)

CONTROLLED UNCLASSIFIED
INFORMATION//MITTENS

1. Incident Name:	2. Operational Period:	3. Branch	Division
LICK CREEK/GREEN RIDGE	Date From: 08/12/21 Date To: 08/13/21 Time From: 0600 Time To: 0600	II	P

4. Operations Personnel:			
Operations Section Chief: Shay Rogge, Brad Pietruszka (T)	Planning Ops		
Branch Director: Matt Norden, Deon Steinle (T)	Safety: Rob Pelton, Eric White (T)		
Division/Group Supervisor: Ian Barrett, Aaron Woodham (T)	Air Attack: Tim Haas		

5. Resources Assigned:							
Resource Identifier	ALS	LWD	Leader	Personnel	Request #	Hours	Reporting Location
TBD							

6. Work Assignments:
 Monitor the fire's edge for movement.
 Identify areas to utilize aircraft to reduce fire spread as needed.

7. Special Instructions:

8. Communications							
Name	Ch	Function	Rx Freq	Rx Tone	Tx Freq	Tx Tone	Notes
SEE ICS 205 COMM PLAN							

9. Prepared by: Name:	Kellie Stover, Amy Daniels, Rick Lancaster(T)	RESL	Signature:
ICS 204	Date/Time: 8/11/2021 2200	Personnel Count: 0	

ASSIGNMENT LIST (ICS 204 WF)

CONTROLLED UNCLASSIFIED
INFORMATION//BASIC

1. Incident Name: LICK CREEK/GREEN RIDGE	2. Operational Period: Date From: 08/12/21 Date To: 08/13/21 Time From: 0600 Time To: 0600	3. Branch Division NIGHT
---	---	--

4. Operations Personnel:	
Operations Section Chief: Shay Rogge, Brad Pietruszka (T)	Planning Ops
Branch Director: Troy Mueller	Safety: Rob Pelton, Eric White (T)
Division/Group Supervisor: Chris Rokosh, Jeff Corser (T)	Air Attack: Tim Haas

5. Resources Assigned:							
Resource Identifier	ALS	LWD	Leader	Personnel	Request #	Hours	Reporting Location
ENG4 Inbound E18 GR		8/14	Navarro	3	E-161	1800-1200	Rose Spike
ENG5 Methow River GR		8/14	Hernandez	3	E-159	1800-1200	Rose Spike
ENG5 Iron Triangle GR		8/12	Carter	3	E-163	1800-1200	Rose Spike
ENG6 Eye of the Eagle GR		8/13	Gillian	2	E-147	1800-1200	Rose Spike
ENG6 ONF E619 GR		8/13	Bell	3	E-148	1800-1200	Rose Spike
ENG6 Osprey Wildfire GR		8/23	Roe	3	E-149	1800-1200	Rose Spike
ENG6 Timberrmans Inbound GR		8/13	Thompson	3	E-151	1800-1200	Rose Spike
WTS2 Dahl-Bredine GR		8/13	Dahl-Bredine	1	E-133	1800-1200	Rose Spike
WTS2 Black Range GR		8/14	Sallee	1	E-134	1800-1200	Rose Spike
DOZ3 Mortimore 1 GR		8/13	Mortimore	2	E-176	1800-1200	Rose Spike
DOZ3 Mortimore 2 GR		8/13	Jaeger	2	E-180	1800-1200	Rose Spike
SOF2 Medina		8/20	Medina	1	O-363.9	1800-1200	Rose Spike
SOFR(T) Eric Adams		8/21	Adams	1	O-456	1800-1200	Rose Spike

6. Work Assignments:
 Patrol and improve line where needed.
 Transfer operational needs to Day Operations.
 Take action as needed to ensure that existing structures and infrastructures do not sustain further damage.

7. Special Instructions:
 Frontline Medical (E-61; LWD 8/13) located @ DP-17 Lead READ Will Marquardt: 530-402-6202
 DIVS to identify equipment to be sent in an event of an IA within TFR. Operations will identify closest resources to respond to new incident.
 Please make sure 3/32" fish screens are used at all draft sites in Punjab Creek, Touchet, and Tucannon Rivers.


Name	Ch	Function	Rx Freq	Rx Tone	Tx Freq	Tx Tone	Notes
SEE ICS 205 COMM PLAN							

9. Prepared by: Name:	Kellie Stover, Amy Daniels, Rick Lancaster(T)	RESL	Signature:
ICS 204	Date/Time: 8/11/2021	2200	Personnel Count: 28

AIR OPERATIONS SUMMARY 220 Prepared By: Matt Lingenfelter Prepared: 08/11/2021 Prepared Time: 18:00

1. INCIDENT NAME: LICK CREEK/GREEN RIDGE **2. OPERATIONAL PERIOD** 08/12/2021 **START TIME:** 07:30 **END TIME:** 21:30 **SUNRISE:** 05:48 **SUNSET:** 20:08

3. REMARKS:



ROCKY MOUNTAIN INCIDENT MANAGEMENT TEAM

Thanks to all Helibase personnel who assisted Helibase Manager Lee Steward with our regional aviation group visitors in Walla Walla yesterday. Also take note of the ceiling and southern boundary in the new temporary flight restriction. Have a great safe shift everybody.

4. MEDICAL RESPONSE AIRCRAFT:

1) Life flight: 911
 2) Short Haul: Walla Walla H-353JR (AS-350B3)

5. TFR:

Lick Creek 1/4930
 119.5250 12,000MSL
 Helibase:
 Walla Walla Regional Airport (KALW)
 N46°05.552 x W118°17.045

*** Follow Medical Plan ICS-206 ***

6. PERSONNEL	NAME	PHONE #	7. FREQUENCIES	AM	FM	8. FIXED-WING Avail/ Type/ Make-Model/N#/ Base
AOBD	Carolyn Blatz	720-693-3194	A/A Primary TFR	119.5250		ATGS Platform: AA N400DS Email Costs to: 2021.greenridge.finance@firenet.gov lickcreekhelibase@gmail.com
AOBD(T)	Matt Lingenfelter	805-705-8621	A/A Secondary	123.7000		
ASGS	Ken Ostrom	307-272-3266	A/G Branch 1 Primary		169.2000	
ATGS	Tim Haas	307-388-9997	A/G Branch 2 Logistics		167.0750	
HEBM Walla Walla	Lee Steward	775-220-6364	A/G Branch 2 Primary		168.2750	
Mobile Retardant Base	Clint Webley	509-398-7860	A/G Branch 2 Secondary		168.5250	
Blue Mountain	Aircraft Desk	541-963-7171	AIRGUARD		168.6250 TX 110.9	
			VMED 28		155.3400	

9. HELICOPTERS (Use Additional Sheets as Necessary)

FAA N#	TY	MAKE/ MODEL	BASE	START	AVAIL	REMARKS	FAA N#	TY	MAKE/ MODEL	BASE	START	AVAIL	REMARKS
187CH	1	BV CH-46	ALW	0830	0900	Bucket	359EV	3	AS-350B3	ALW	0830	0900	Recon, Bucket, PAX, Cargo
612CK	1	Sikorsky SH-3H	ALW	0830	0900	Bucket	353JR	3	AS-350B3	ALW	0830	0900	Recon, Bucket, PSD, PAX, Cargo
604CK	1	UH-60	ALW	0830	0900	Bucket	516LE	3	Bell 206L	ALW	1000	1100	Recon, Bucket, Cargo, PAX

by: /s/ Matt Lingenfelter AOBD(t)

INCIDENT RADIO COMMUNICATIONS PLAN I-205		1. INCIDENT NAME		2. DATE/TIME PREPARED		3. OPERATIONAL PERIOD DATE/TIME					
Green Ridge Fire		8/8/2021		08/12/2021 0600 to 08/13/21 0600							
4. BASIC RADIO CHANNEL UTILIZATION											
Ch #	Function	Channel Name	Assignment	RX Freq	N/W	RX Tone/NAC	TX Freq	N/W	TX Tone/NAC	Mode Analog (A) Digital (D) Mixed (M)	Remarks
1	Tactical	TAC 1	DIV M	168.0500	N	151.4	168.0500	N	151.4	A	BRANCH 1
2	Tactical	TAC 2	DIV A	168.6000	N	151.4	168.6000	N	151.4	A	BRANCH 2
3	Tactical	TAC 3	N. CONTING	166.7250	N	151.4	166.7250	N	151.4	A	BRANCH 1
4	Tactical	TAC 4	DIV K/G	166.7750	N	151.4	166.7750	N	151.4	A	BRANCH 1
5	Tactical	TAC 5	LICK/GREEN RIDGE	168.2500	N	151.4	168.2500	N	151.4	A	BRANCH 1
6	Tactical	TAC 6	DIV NIGHT DIV P	168.2000	N	151.4	168.2000	N	151.4	A	BRANCH 2 FOR DIV P
7	Command	CMD 7	COMMAND	170.0000	N	151.4	166.6750	N	151.4	A	Little Turkey Tail Linked to CMD 8 & 9
8	Command	CMD 8	COMMAND	170.6875	N	151.4	166.5750	N	151.4	A	Tallow Flats Linked to CMD 7 & 9
9	Command	CMD 9	COMMAND	170.425	N	151.4	168.0750	N	151.4	A	Chase Mtn Linked to CMD 7 & 8
10	Command	CMD 10	COMMAND	172.0250	N	151.4	162.1750	N	151.4	A	Hopkinds Ridge Link 7, 8, & 9
11	Command	CMD 11	COMMAND	172.0750	N	151.4	162.2000	N	151.4	A	North zone - to be installed.
12	Air to Ground	VMED 28	MEDICAL A/G	155.3400	N		155.3400	N		A	A/G use with Air Ambulance
13	Air to Ground	A/G Logistics		167.0750	N		167.0750	N		A	Sling Loads and Troop Shuttles
14	Air to Ground	A/G PRIMARY		168.2750	N		168.2750	N		A	
15	Air to Ground	A/G Secondary		168.5250	N		168.5250	N		A	
16	Air Guard	AIR GUARD		168.6250	N		168.6250	N	110.9	A	Use for Aircraft Emergency Contact
5. Special Instructions:											
6. I-205 Prepared By: Communications Unit Leader				Name: JIM MIDYETT				Signature: JIM MIDYETT			

INCIDENT RADIO COMMUNICATIONS PLAN I-205		1. INCIDENT NAME		2. DATE/TIME PREPARED		3. OPERATIONAL PERIOD DATE/TIME					
		Lick Creek Fire		8/8/2021		08/12/21 0600 to 08/13/21 0600					
4. BASIC RADIO CHANNEL UTILIZATION											
Ch #	Function	Channel Name	Assignment	RX Freq	N/W	RX Tone/NAC	TX Freq	N/W	TX Tone/NAC	Mode Analog (A) Digital (D) Mixed (M)	Remarks
1	COMMAND	CMD 1	OUT OF SERVICE		N			N		A	Removed from Service. unavailable for use.
2	COMMAND	CMD 2	COMMAND	170.4125	N	131.8	165.9625	N	131.8	A	ON PINKHAM BUTTE LINKED Green Ridge
3	COMMAND	CMD 3	COMMAND	170.0250	N	131.8	165.4500	N	131.8	A	CLEARWATER LOOKOUT Linked to Green Ridge
4	COMMAND	CMD 4	OUT OF SERVICE		N			N		A	
5	TACTICAL	TAC 5	LICK BRANCH	168.0500	N	131.8	168.0500	N	131.8	A	
6	TACTICAL	TAC 6	UNASSIGNED	168.6000	N	131.8	168.6000	N	131.8	A	
7	TACTICAL	TAC 7	LICK/GREEN RIDGE	166.7250	N	131.8	166.7250	N	131.8	A	
8	TACTICAL	TAC 8	UNASSIGNED	166.7750	N	131.8	166.7750	N	131.8	A	
9	TACTICAL	TAC 9	UNASSIGNED	168.2500	N	131.8	168.2500	N	131.8	A	
10	TACTICAL	TAC 10	UNASSIGNED	168.2000	N	131.8	168.2000	N	131.8	A	
11	COMMAND	CMD 11	COMMAND	169.4500	N	131.8	172.5500	N	131.8	A	Located near DP 57
12	COMMAND	COTTWD	LOCAL RPTR	173.7750	N	131.8	164.8250	N	127.3	A	Located 18 M SE of Pomeroy
13	AIR TO GROUND	VMED28	MED A/G	155.3400	N		155.3400	N		A	Use with Air Ambulance
14	AIR TO GROUND	A/G PRI	A/G	169.2000	N		169.2000	N		A	
15	AIR TO GROUND		UNAVAILABLE		N			N		A	Reassigned to Green Ridge Fire
16	AIRGUARD	AIRGUARD	AIR GUARD	168.6250	N		168.6250	N	110.9	A	Emergency Aircraft Contact
5. Special Instructions:											
6. I-205 Prepared By: Communications Unit Leader				Name: JIM MIDYETT				Signature: JIM MIDYETT			

INCIDENT RADIO COMMUNICATIONS PLAN I-205				1. INCIDENT NAME		2. DATE/TIME PREPARED		3. OPERATIONAL PERIOD DATE/TIME			
IA				IA		8/8/2021		08/12/21 0600 TO 08/13/21 0600			
4. BASIC RADIO CHANNEL UTILIZATION											
Ch #	Function	Channel Name	Assignment	RX Freq	N/W	RX Tone/NAC	TX Freq	N/W	TX Tone/NAC	Mode Analog (A) Digital (D) Mixed (M)	Remarks
1	COMMAND	ST ASOTIN	LOCAL RPTR	159.4200	N	D365	151.2950	N	D365	A	6 Miles W of Anatone
2	COMMAND	COTTNWD	LOCAL RPTR	173.7750	N	131.8	164.8250	N	127.3	A	18 Miles SE of Pomeroy
3	COMMAND	SADDLE	LOCAL RPTR	173.7750	N	131.8	164.8250	N	146.2	A	29 Miles SE of Pomeroy
4	COMMAND	OREGON	LOCAL RPTR	173.7750	N	131.8	164.8250	N	167.9	A	25 Miles S of Pomeroy
5	COMMAND	DIAMOND	LOCAL RPTR	173.7750	N	131.8	164.8250	N	151.4	A	
6	TACTICAL	COM	DNR TACTICAL	151.4150	N	103.5	151.4150	N	103.5	A	
7	TACTICAL	TAC 1	DNR TACTICAL	151.3100	N	103.5	151.3100	N	103.5	A	
8	TACTICAL	TAC 2	DNR TACTICAL	151.3400	N	103.5	151.3400	N	103.5	A	
9	TACTICAL	TAC 3	DNR TACTICAL	151.3500	N	103.5	151.3500	N	103.5	A	
10	TACTICAL	REDNET	TACTICAL	153.8300	N		153.8300	N		A	
11	TACTICAL	UMF-TAC	TACTICAL	168.2375	N	131.8		N	131.8	A	
12	AIR TO GROUND	A/G 1	LOCAL A/G	159.2700	N	103.5	159.2700	N	103.5	A	
13	AIR TO GROUND	A/G 9	LOCAL A/G	166.9125	N		166.9125	N		A	
14	AIR TO GROUND	A/G 44	LOCAL A/G	167.6250	N		167.6250	N		A	
15	AIR TO GROUND	VMED28	MEDICAL A/G	155.3400	N		155.3400	N		A	
16	AIRGUARD	AIR GUARD	AIR GUARD	168.6250	N		168.6250	N	110.9	A	Emergency Aircraft Contact
5. Special Instructions:											
6. I-205 Prepared By: Communications Unit Leader						Name: JIM MIDYETT			Signature: <i>JIM MIDYETT</i>		



Human Resource Message



Lick Creek and Green Ridge Fires August 12, 2021

Tolerance:

We ask you to be tolerant of ideas and or opinions that differ from your own. Keep an open mind and keep open the lines of communication which will help you resolve any differences of opinion amicably. It is okay to take a step back and think about your response vs just saying something off the top of your head in the heat of the moment.

It is easy to get burnt out and on edge with each other given the terrain, hard work, and extreme weather conditions. Be mindful of the language that you use as offensive or derogatory remarks are inappropriate and are not acceptable in a workplace. Working together as a team, displaying a positive attitude, and watching out for each other exemplifies leadership and professionalism.



When you come to the end of your rope, tie a knot and hang on.

Quote for the Day:

“When you come to the end of your rope, tie a knot and hang on.”
-Franklin Roosevelt

Hang in there, don't give up, you've got this!

Have a safe and productive day!

Mutual Respect: You make the difference! Always treat people with Dignity and Respect!

TEAM BLACK FINANCE PROCEDURES

**** Lick Creek, Dry Gulch and Green Ridge Fires ****

We are using a 100% electronic time submission process. Please submit time daily.

PLEASE REPORT TIME BASED ON THE FIRE YOU WORKED ON.

Resources just checking in: After checking in with Plans, please complete the electronic Finance Check-In Form and submit appropriate forms/documents electronically.

To submit time, please use the QR code below that applies to your resource type,

OVERHEAD

- Resource Orders beginning with an O.
- Modules.
- Vehicles belonging to individual overhead that require an invoice.



EQUIPMENT

- Resource Order Numbers beginning with an E.



CREW

- Resource Order Numbers beginning with a C.
- Helitack Crews beginning with an A.



OR email time to: 2021.greenridge.finance@firenet.gov Please include resource type (OVERHEAD, EQUIPMENT OR CREW) in subject line. Please complete electronic documents OR send pictures.

If you are sending other information or questions to the finance email, please send separate email with appropriate subject line, ie: "Question on time" or "Explanation of travel."

Resources **DO NOT** need to physically come to Finance to Demob

To electronically demob from finance: Submit final CTRs and Shift Tickets to the above finance email. Include your email address and phone number. Make sure CTRs/Shift Tickets are complete and legible. A final timesheet (OF288) and/or Invoice (OF286) will be sent to you for review. Please respond with a confirmation of accuracy. If there are errors or edits needed, inform finance asap by replying to the email.

Travel safely home without having to deal with finance in person!

If you have any questions, please contact us at:

Finance 971-245-0248 or 971-727-7461; Comp/Claims 541-969-2396

Demob Tips

*****Note: If you have cell phone coverage and have nothing to return to Communications or Supply, you will not physically need to come to demob.*****

After being notified by your supervisor of your tentative release date:

1. Return all supplies, radios, etc. that were checked out. If you have no items to return, you can complete Finance and Demob virtually. All line vehicles must complete a WEED WASH and have a post-inspection of their vehicles.
2. Submit time for all personnel and equipment to Finance per directions in IAP.
3. Once you receive confirmation from FINANCE with a copy of your OF-288 and other financial documentation, you are free to complete Step 4 and travel home.
4. Complete Demob Checkout Sheet using QR code on the cover of the IAP. If unable to use, see demob. Once demob receives confirmation from Finance and your demob checkout sheet has been electronically submitted, you will be released in the system.

Demob Unit email: 2021.greenridge.demob@firenet.gov (970) 217-6479

Training Specialist Message/Training Process

You do not have to wait until the last work day to complete a position task book (PTB) evaluation. You can complete the evaluation process at any time on the incident. Trainees are not required to check in with the Incident Training Specialist (TNSP). However, Geographic Area Priority Trainee Program participants are strongly encouraged to check in with the TNSP. The TNSP is available to answer questions and/or help guide both the Trainee and Evaluator through the process.

1. Incident trainees should check in early with the TNSP either in person or remotely using the QR code on the IAP cover. Within that QR code exists a training portal.
2. The trainee needs to take ownership of their training assignment. Working closely with their evaluator, identify tasks and learning opportunities that can be documented in their PTB.
3. Ensure all the information is complete and correct on the Evaluation Record and, if being recommended for certification, the PTB Verification/Certification form. Incorrect or incomplete information is a very common issue in PTBs and, all too often, delays certification of a trainee as fully qualified. Please review all information to make sure it is complete, accurate, and legible.
4. The evaluator should complete an Incident Personnel Performance Rating (ICS 225 WF) for the trainee, and submit a copy to the TNSP either in person or a picture copy.
5. Once all the documentation is completed, the trainee will need to close out with the TNSP. The trainee can: 1) stop by and close out in person with TNSP; 2) call the TNSP to go through the Exit Interview Form and discuss how the assignment went; or 3) complete the Exit Interview Form through the QR code link.

Incident Training Specialist email: 2021.greenridge.plans@firenet.gov

TENTATIVE RELEASE DATES & TIMES

08/12/2021

CREWS

C-46 0630 (HC2I) NW - OR-MAF #4 (PCRD)

EQUIPMENT

E-155 0700 (ENG5) ENGINE - T5 - YABOY FIRE LLC

E-206 0700 (AMBU) MEDICAL - AMBULANCE, T1 -

OVERHEAD

O-220 0730 (RCDM) WHITAKER, DAVID M

O-262 0800 (EQTR) ENGELMANN, DEANNA

O-261 1700 (THSP) CAIRE, MATTHEW S

08/13/2021

EQUIPMENT

E-129 0700 (ENG4) ENGINE - T4 - LONE WOLF

E-130 0730 (ENG5) ENGINE - T5 - WEST COAST

E-131 0800 (ENG4) ENGINE - T4 - FLASHBACK

E-163 0900 (ENG5) ENGINE - T5 - IRON TRIANGLE

OVERHEAD

O-235 0600 (FOBS) LYON, ZACHARY

O-260 0800 (GISS) GARSTANG, JENNIFER

O-226 0800 (PIOF) HILSTEIN, RICHARD

O-238 0830 (FOBS) OSBORNE, KYLE

O-278 0930 (TFLD) KRAMER, CHRISTOPHER

O-289 0930 (TFLD) SETZER, CALEB

O-265 1700 (DECK) TREFON JR, WILLIAM

Transportation Map



Green Ridge
OR-UMF-000659
8/12/2021 24hr
25,250 acres at
8/10/2021@2035

- Wildfire Daily Fire Perimeter
- Dip Site
- Mobile Retardant Base
- Helispot
- Division Break
- Branch Break
- Incident Command Post
- Drop Point
- Camp
- Staging Area
- Mobile Weather Unit
- Repeater
- Water Source
- Wilderness
- County or Equivalent
- Forest Service
- Secondary Hwy
- Local Road
- 4WD

Directions to new ICP:

Take Hwy 12 east 12-15 miles to a sign that says "Camp Wooten".

Turn right at sign and follow paved road to camp.

New ICP
Last Chance Resort

Branch I

Div M

Div K

Div G

Branch II

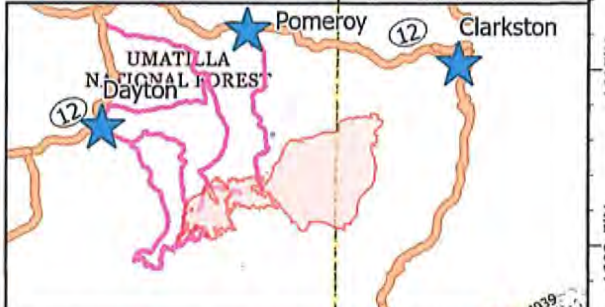
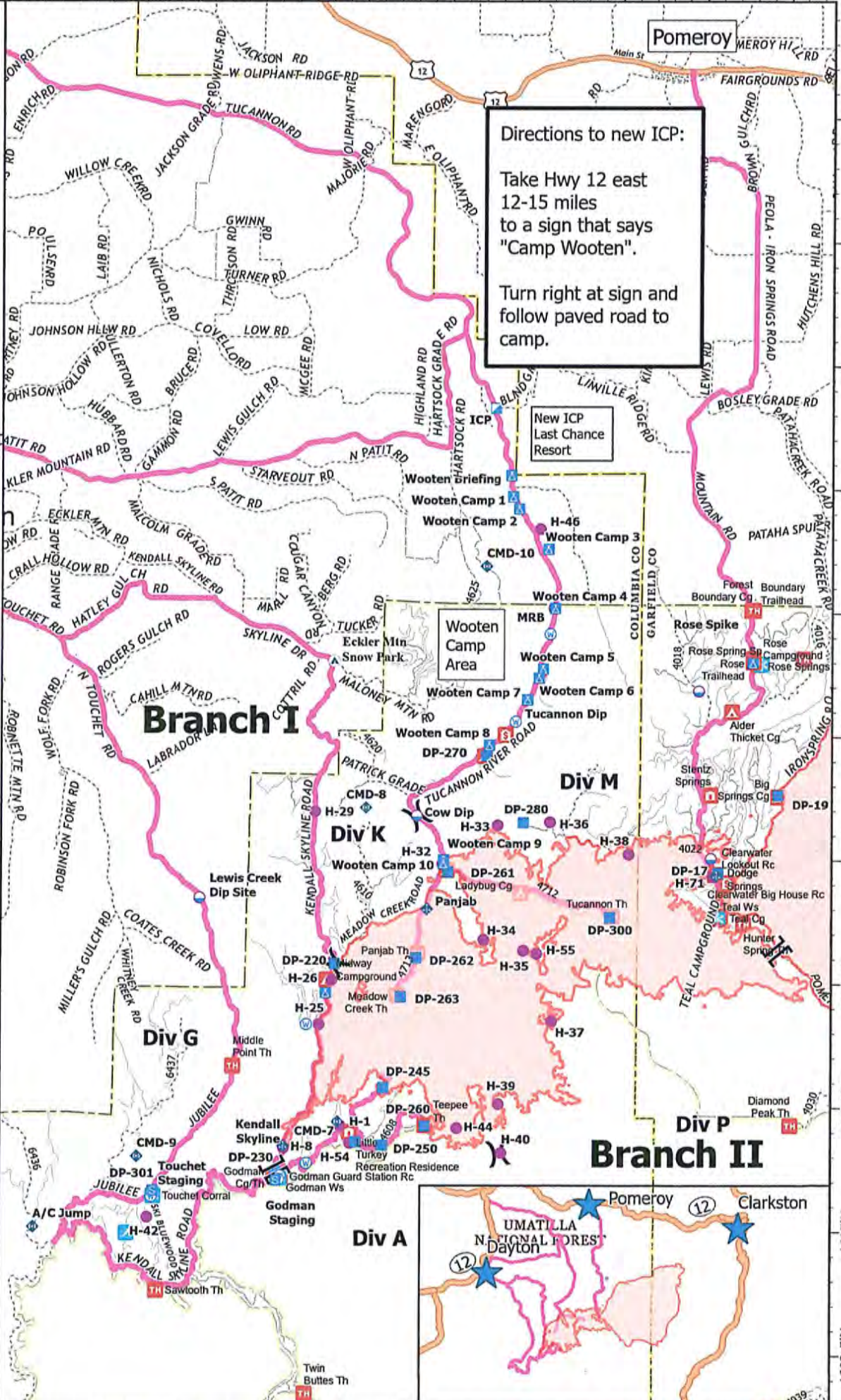
Div A

Div P



8/11/2021 1824

North American 1983 Datum.





Rocky Mountain IMT Black



Line Supply Order

Date & Time Order was Placed	Order # (BR+DIVS + #)	Location & Time for Delivery (Division/LZ/DP/Lat Long)	Mode of delivery (Driven/Helo/DIVS to Pick up)

Order received in Communications by (name & time):

Order received in Supply by (name & time):

Order received in Transportation by (name & time):

Order received in Helibase by (name & time):

Order shipped to line unit by (name & time): (Send this sheet to the line with the order)

#	Item	Amount		Item	Amount
1.	Meals, Breakfasts	ea	30.	Slingable Blivet	ea
2.	Meals, Lunches	ea	31.	Folding Tank, specify size	ea
3.	Meals, Dinners	ea	32.	Lightweight Pump Kit (Cache)	ea
4.	Meals, MRE's	cs	33.	Hose, 1 1/2"	ea
5.	Water, 5 gal. cubie	ea	34.	Hose, 1"	ea
6.	Batteries- AA	1-Flat	35.	Hose, 3/4"	ea
7.	Batteries, Specify Type	pk	36.	Reducer, 1 1/2" x 1"	ea
8.	Flagging, Specify type	roll	37.	Reducer, 1" x 3/4"	ea
9.	Gas, raw	gal	38.	Gated "Y", 1 1/2"	ea
10.	Bar Oil	gal	39.	Gated "Y", 1"	ea
11.	2- cycle oil, chainsaw (2.5 oz)	6 pk	40.	Gated "Y" 3/4"	ea
12.	Sleeping Bags	ea	41.	Shut-off Valve, "	ea
13.	Gatorade	cs	42.	In-line Tee, 1 1/2" x 1"	ea
14.	Tarps / Plastic	roll	43.	Nozzle, 1 1/2"	ea
15.	Parachute Cord	roll	44.	Nozzle, 1"	ea
16.	Tool, Shovel	ea	45.	Nozzle, 3/4"	ea
17.	Too I, Pulaski	ea	46.	20 Man First Aid Kit	ea
18.	Tool, Combi	ea	47.	Chainsaw Kit	ea
19.	Tool, McLeod	ea	48.	Toilet Paper (96 per case)	cs
20.	Tool, Specify Type	ea	49.	1000 ft. Hose Lay Kit	ea
21.	Fusee	cs	50.	Garbage Bags	bx
22.	Drip Torch	ea	51.	Leadline	ea
23.	Drip Torch Mix, 5 gal.	ea	52.	Spike Supply Kit	ea
24.	Coffee Kit w/propane	ea	53.	Dolmar (6 per case)	ea
25.	Swivel	ea	54.	Sprinkler Kit	ea
26.	Backpack Pump	ea	55.	LINE Spike Supply Kit	ea
27.	Pumpkin, specify size	ea	56.	Duct Tape	roll
28.	Mark 3 Pump Kit w/fuel	ea	57.	House Wrap	roll
29.	2-cycle oil, high pressure pump	qt	58.	Staple Gun w/ staples	ea

Team Ordering/Timeline Process:

- 0630 - Morning Briefing, start of crew time.
 1100 - Last call to change spike camp resource hot food location.
 1600 - DIVS to have next day's resource order ready for Planning OPS.
- All crew level orders will be placed through DIVS or Branch.
 - DIVS or Branch will place all orders through Communications Unit.
 - All orders will be tracked using the process found on the front of this form.

GPS Datum: NAD 83- Degrees, Decimal, Minutes (DDMM.MM)

Definitions

- FOB-Forward Operating Base** is a secure forward position established to strategize, design and discuss tactics, and for personnel to transfer information and meet.
- Line Spike Camp**-Managed by Operations at the DIVS level; mobile, short duration and self- sufficient.
- Spike Camp**-Supported by Logistics, listed in the IAP, numbers in camp are set by 1100, named by Plans.
- Emergency Medevac**- Life threatening situation requiring immediate medical attention. Handled as per IAP med plan and team SOP's. Communications to clear command channel radio traffic.
- Medical Transport**-Transport of less serious injury/illness managed by Operations or line Medics back to camp for evaluation and/or treatment.

1000 ft. Hose Lay Kit (Order as "#49")				Spike Supply Kit (Order as "#52")			
Quantity	NFES#	Item	Weight	Quantity	NFES#	Item	Weight
10 ea	1239	Hose 1½"	125 lbs	2 rolls	0071	Duct Tape	4 lbs
10 ea	1238	Hose 1"	84 lbs	4 rolls	0222	Fiber Tape	2lbs
20 ea	1016	Hose ¾"	25 lbs	1 case	0021	Trash Bags	21 lbs
5 ea	0231	1½" Gated "Y"	20 lbs	1 case	0465	Cups for hot liquid	18 lbs
5 ea	0259	1" Gated "Y"	13 lbs	2 ea	0070	16x24 Tent fly	40 lbs
10 ea	0904	¾" Gated "Y"	3 lbs	3 ea	0027	Water Wash Basins	2 lbs
5 ea	0010	Reducers 1½" - 1"	3 lbs	1 case		Liquid Hand Soap / pump	10 lbs
5 ea	0733	Reducers 1" - ¾"	2 lbs	18 cases	1842	MRE's	18 x 20= 360 lbs
10 ea	0738 or 0835	Ball Valve ¾"	5 lbs	48 ea	0022	Sleeping bags (dbl. bag)	48 x 5= 240 lbs
10 ea	0138	Nozzle, 1"	5 lbs	3 cases	0030	AA Batteries, 24 pkg./case	90 lbs
10 ea	0136	Nozzle ¾"	5 lbs	1 case	0240	Paper Towels	41 lbs
5 ea	0230	Tee 1½x1½x1"/valve	5 lbs	1 case	0142	Toilet Paper	44 lbs
LINE Spike Supply Kit (Order as "#55")				1 roll	0144	Plastic sheeting	45 lbs
				1 roll	0533	P-Cord	9 lbs
Quantity	NFES#	Item	Weight	20 ea	7443	Cubies, 5 gal. Full Potable Water	20 x 40= 800 lbs
20+0H	0022	Sleeping bags	20 x 5= 100 lbs	1 box	1059	12" Bastard Files	9lbs
20 ea	7443	Cubies, 5 gal Full	20x40= 800 lbs	1 ea	3444	2-cycle mix, chainsaw (6 pk 2.5 oz)	2lbs
18 cases	1842	MRE's	18x20=360 lbs	8 gal	1880	Bar Oil	64 lbs
1 sl	0533	P-Cord	9 lbs	15 gal		Regular Gas	120 lbs
3 cases	0030	AA Batteries, 24 pkg./case	90 lbs	1 can		3 lbs. can coffee	3 lbs
1 case	0021	Trash bags	21 lbs	1 ea		2 1/2 gal coffee pot or 3-1 gal	10 lbs
10 rolls	0142	Toilet paper	3 lbs	2ea	0089	Ridge pole	46 lbs
1 roll	0144	Plastic sheeting	45 lbs	12 ea	0083	Pole upright	89 lbs
2 rolls	0222	Fiber Tape	2 lbs	24 ea	0825	Stake Tent	24 lbs
1 ea	3444	2-cycle mix, chain-saw (6 pk 2.5 oz)	2 lbs				
4 gal	1880	Bar Oil	32 lbs				
15 gal		Regular Gas	120 lbs				
1 box	1059	12" Bastard Files	9 lbs				



Safety Message

INCIDENT NAME: Lick Creek/Green Ridge	OPERATIONAL PERIOD: 08/12/2021 0600-0600
<ul style="list-style-type: none">• Snags/Hazard Trees• Firing Operations• Driving• Winds	<ul style="list-style-type: none">• Heavy Equipment Operations• Air Operations• ATV/UTV Use• Rolling Materials

Risk Management

"Risk management doesn't get in the way of doing the mission - it is the way we do the mission."

We've identified 10 primary hazards to focus our risk assessment on for today/ tonight's operation. It is important that we stay on top of the risks involved in our actions throughout the shift, especially if conditions change. Use the following process to quickly assess risk for the situations you face throughout the day.

Step 1 - Identify the hazards. Make this an ongoing, continuous process in your daily decision-making routine. Gather as much information as possible.

Step 2 - Assess the risk levels. The probability and severity of an undesirable outcome linked to identified hazards = RISK.

Step 3 - Analyze and select control or mitigation measures. Limiting exposure is almost always an option.

Step 4 - Reassess risk level with controls in place (residual risk).

Step 5 - Make your risk informed decision based on the residual risk. Ask the risk vs. gain question - is the benefit of the action I'm considering worth the risk I'll be taking?

Step 6 - Monitor the situation

USE THE RISK MANAGEMENT PROCESS PRIOR TO STARTING OPERATIONS AND AS THEY CHANGE THROUGHOUT THE DAY. PLEASE SEE PAGE 1 OF THE IRPG.

SAFETY OFFICERS:

Pat Medina SOF2, Eric White SOF2(t), Ryan Grant SOFR,
Sean Lowry SOFR, Don Foco SOFR, Eric Adams SOFR(t),
Robert Pelton SOF2

COVID GUIDELINES



NWCG screening Tool

MASKS ARE REQUIRED:

BRIEFINGS.

CAN'T MAINTAIN 6FT SOCIAL DISTANCING OUTSIDE.

INDOORS.

VEHICLES. (Example: More than one person in vehicle)

MASK WEARING EXCEPTION:

ALONE IN AN ENCLOSED SPACE. (Example: One person in Vehicle)

ACTIVELY ENGAGED IN FIREFIGHTING ON THE FIRELINE.

OUTSIDE AND CAN MAINTAIN 6FT APART.

EATING OR DRINKING (6FT SOCIAL DISTANCE)

PLEASE CONTACT THE GREEN RIDGE COVID
HOTLINE IF YOU HAVE ANY QUESTIONS ABOUT COVID, SYMPTOMS,
AND OR FREE TESTING.

GREEN RIDGE COVID HOTLINE # 971-245-9407

GREEN RIDGE FIRE FREE COVID TESTING

1. Test is 100% voluntary. **"HIGHLY RECOMMENDED"**
2. The email address below goes straight to the COVID Task Force and is **HIPPA** (Health Insurance Portability and Accountability Act) Compliant. Also, any phone calls or texts to the COVID Hotline is following HIPPA.
3. Please email: **2021.lick.plans@firenet.gov** or call COVID Hotline: **971-245-9407** to schedule your test.
4. We can test you at ICP or Wooten.
6. The test only takes 30 minutes to get results.
7. Please check with your employer or agency if they want you to test before you Demob.
8. Try to let us know 3-days before your demob day so that we can make it as quick as possible.

MEDICAL PLAN (ICS 206 WF)

Controlled Unclassified Information//Basic

1. Incident/Project Name		2. Operational Period				
Lick Creek/Green Ridge Fires		08/12/2021 (06:00) - 08/13/202 (06:00)				
3. Ambulance Services						
Name	Location	Phone/Frequency	Advanced Life Support (ALS)			
			Yes	No		
Columbia County Fire District #3	111 Patit Road, Dayton, WA 99328	Dial 911		X		
Lewiston Fire Department	1245 Idaho Street, Lewiston, ID 83501	Dial 911	X			
4. Air Ambulance Services						
Name	Phone/Freq	Type of Aircraft & Capability				
Lifeflight - Lewiston	800-232-0911	Bell 407 – ALS, Night Vision				
Lifeflight - Walla Walla	800-232-0911	AW 119 – ALS, Night Vision				
Walla Walla	Contact Air Ops	AS-350B3 - Short Haul				
5. Hospitals						
Name	GPS Datum – WGS 84 DD°	Travel Time		Phone	Helipad	Level of Care Facility
Complete Address	Degrees Minutes Seconds	GND	AIR		Yes No	
St. Mary Medical Center 401 West Poplar Street Walla Walla, WA 99362	Lat: 46°03' 40" N	1 hr*	20 min*	509-897-2500	X	Level 3
	Long: 118°20' 31" W					
	VHF:					
St. Joseph Regional Medical Cntr 415 6 th Street Lewiston, ID 83501	Lat: 46°25' 00" N	1 hr*	20 min*	208-799-5799	X	Level 3
	Long: 117°01' 26" W					
	VHF:					
Sacred Heart Medical Center 101 W 8 th Avenue Spokane, WA 99204	Lat: 47°38' 56" N	2 hr*	30 min*	509-474-3342	X	Level 2 Trauma Center
	Long: 117°24' 46" W					
	VHF:					
Legacy Emanuel Medical Center 2801 North Gantenbein Avenue Portland, OR 97227	Lat: 45°32' 40" N	5 hr*	2.5 hr*	503-494-7333	X	Level 1 Trauma Center Burn Center
	Long: 122°40' 17" W					
	VHF:					
*Travel times are from the Incident Command Post in Wooten Wildlife Area Headquarters and DO NOT include response time to the incident.						
6. Division Branch Group						
Div A	EMS Responders & Capability:		EMPF Wagner/Forsythe			
	Equipment Available on Scene:		ALS, AED, Stokes Litter, SKED, UTV			
	Medical Emergency Channel:		TAC 2			
Div G/K	EMS Responders & Capability:		Ambulance 3, EMTF Holborn, EMTF Merrell, Rapid Access Team (RAT)			
	Equipment Available on Scene:		ALS, BLS, AED, Cardiac Monitor, Stokes Litter, SKED, UTV			
	Medical Emergency Channel:		TAC 4			
Div M	EMS Responders & Capability:		Ambulance 6, REMS 10, EMTF Jonassen			
	Equipment Available on Scene:		ALS, BLS, AED, Cardiac Monitor, Stokes Litter, SKED, UTV			
	Medical Emergency Channel:		TAC 1			
ICP	EMS Responders & Capability:		Ambulance 5			
	Equipment Available on Scene:		ALS, Cardiac Monitor			
	Medical Emergency Channel:		Command			
Nights	EMS Responders & Capability:		Ambulance 4			
	Equipment Available on Scene:		ALS, Cardiac Monitor			
	Medical Emergency Channel:		TAC 6			
	EMS Responders & Capability:					
	Equipment Available on Scene:					
	Medical Emergency Channel:					
	EMS Responders & Capability:					
	Equipment Available on Scene:					
	Medical Emergency Channel:					
7. Prepared By (Medical Unit Leader)		8. Date/Time		9. Reviewed By (Safety Officer)		10. Date/Time
Stephanie McGovern, MEDL(t)		08-11-2021 (20:00)		Rob Pelton, SOF2		08-11-2021 (20:00)

MEDICAL PLAN (ICS 206 WF)

Controlled Unclassified Information//Basic

Medical Incident Report

FOR A NON-EMERGENCY INCIDENT, WORK THROUGH CHAIN OF COMMAND TO REPORT AND TRANSPORT INJURED PERSONNEL AS NECESSARY.

FOR A MEDICAL EMERGENCY: IDENTIFY ON SCENE INCIDENT COMMANDER BY NAME AND POSITION AND ANNOUNCE "MEDICAL EMERGENCY" TO INITIATE RESPONSE FROM IMT COMMUNICATIONS/DISPATCH.

Use the following items to communicate situation to communications/dispatch.

1. CONTACT COMMUNICATIONS / DISPATCH (Verify correct frequency prior to starting report)

Ex: "Communications, Div. Alpha. Stand-by for Emergency Traffic."

2. INCIDENT STATUS: Provide incident summary (including number of patients) and command structure.

Ex: "Communications, I have a Red priority patient, unconscious, struck by a falling tree. Requesting air ambulance to Forest Road 1 at (Lat./Long.) This will be the Trout Meadow Medical, IC is TFLD Jones. EMT Smith is providing medical care."

Severity of Emergency / Transport Priority	<input type="checkbox"/> RED / PRIORITY 1 Life or limb threatening injury or illness. Evacuation need is IMMEDIATE <i>Ex: Unconscious, difficulty breathing, bleeding severely, 2^o – 3^o burns more than 4 palm sizes, heat stroke, disoriented.</i> <input type="checkbox"/> YELLOW / PRIORITY 2 Serious Injury or illness. Evacuation may be DELAYED if necessary. <i>Ex: Significant trauma, unable to walk, 2^o – 3^o burns not more than 1-3 palm sizes.</i> <input type="checkbox"/> GREEN / PRIORITY 3 Minor Injury or illness. Non-Emergency transport <i>Ex: Sprains, strains, minor heat-related illness.</i>	
Nature of Injury or Illness & Mechanism of Injury		<i>Brief Summary of Injury or Illness (Ex: Unconscious, Struck by Falling Tree)</i>
Transport Request		<i>Air Ambulance / Short Haul/Hoist Ground Ambulance / Other</i>
Patient Location		<i>Descriptive Location & Lat. / Long. (WGS84)</i>
Incident Name		<i>Geographic Name + "Medical" (Ex: Trout Meadow Medical)</i>
On-Scene Incident Commander		<i>Name of on-scene IC of Incident within an Incident (Ex: TFLD Jones)</i>
Patient Care		<i>Name of Care Provider (Ex: EMT Smith)</i>

3. INITIAL PATIENT ASSESSMENT: Complete this section for each patient as applicable (start with the most severe patient)

Patient Assessment: See IRPG page 106

Treatment:

4. TRANSPORT PLAN:

Evacuation Location (if different): (Descriptive Location (drop point, intersection, etc.) or Lat. / Long.) Patient's ETA to Evacuation Location:

Helispot / Extraction Site Size and Hazards:

5. ADDITIONAL RESOURCES / EQUIPMENT NEEDS:

Example: Paramedic/EMT, Crews, Immobilization Devices, AED, Oxygen, Trauma Bag, IV/Fluid(s), Splints, Rope rescue, Wheeled litter, HAZMAT, Extrication

6. COMMUNICATIONS: Identify State Air/Ground EMS Frequencies and Hospital Contacts as applicable

Function	Channel Name/Number	Receive (RX)	Tone/NAC *	Transmit (TX)	Tone/NAC *
COMMAND					
AIR-TO-GRND					
TACTICAL					

7. CONTINGENCY: Considerations: If primary options fail, what actions can be implemented in conjunction with primary evacuation method? Be thinking ahead.

8. ADDITIONAL INFORMATION: Updates/Changes, etc.

REMEMBER: Confirm ETA's of resources ordered. Act according to your level of training. Be Alert. Keep Calm. Think Clearly. Act Decisively.

