

Lick Creek – Green Ridge Fires

OR-UMF-000658 / OR-UMF-000659
P6N5AV (0614)

Send TIME to: 2021.greenridge.finance@firenet.gov

Friday, August 13, 2021 – Saturday, August 14, 2021

Operational Period 0600-0600



Rocky Mountain IMT2 Black

Troy Hagan, ICT2 — Bill Waln, Deputy ICT2

Public Fire Information
2021.greenridge@firenet.gov

IAP/Map/Demob/Check-in/Etc



<https://tinyurl.com/jtb3wzk6>

**Communications 24-Hour
Emergency Number:
971-727-7965**

1. Incident Name: Lick Creek / Green Ridge	2. Operational Period:	Date From: 08.13.2021 Time From: 0600	Date To: 08.14.2021 Time To: 0600
---	-------------------------------	--	--

- 3. Objective(s):**
- Provide for the safety of firefighters and the public through the utilization of strategic and deliberate risk assessment processes. Ensure incident within an incident (IWI) protocols are established.
 - Develop and implement tactics with the highest probability of success to protect identified values at risk.
 - Maintain and enhance relationships, through timely communication, actively engaging the Agency Administrators, the public, and stakeholders.
 - Coordinate with the READs to ensure natural and historical values are identified and protected.
 - Assist with initial attack as requested, when it will not impede meeting of incident objectives.
 - Manage the incident following established COVID-19 mitigation guidelines limiting spread of infectious diseases.

4. Operational Command Period Emphasis

The most essential element of successful wildland firefighting is competent and confident leadership. Leadership means providing purpose, direction, and motivation for wildland firefighters working to accomplish difficult tasks under dangerous, stressful circumstances. Be a leader today.

[NWCG Incident Response Pocket Guide - page vi]

5. Site Safety Plan Required? Yes No

Approved Site Safety Plans Located at: **None Applicable**

6. Incident Action Plan (the items checked below are included in this Incident Action Plan):

<input checked="" type="checkbox"/> ICS 203 <input checked="" type="checkbox"/> Fire Behavior <input checked="" type="checkbox"/> ICS 205 <input checked="" type="checkbox"/> ICS 220 <input checked="" type="checkbox"/> Maps/Charts <input checked="" type="checkbox"/> ICS 206 <input checked="" type="checkbox"/> 8 Line	<input checked="" type="checkbox"/> Weather Forecast <input checked="" type="checkbox"/> ICS 204 <input type="checkbox"/> ICS 205A (phone list) <input checked="" type="checkbox"/> OTHER <input checked="" type="checkbox"/> ICS 214 <input checked="" type="checkbox"/> ICS 208 Health & Safety	Other Attachments: <input checked="" type="checkbox"/> Finance Instructions <input type="checkbox"/> Line Supply Order <input checked="" type="checkbox"/> COVID Mitigation <input checked="" type="checkbox"/> Demob Tips <input checked="" type="checkbox"/> Separate map packet
--	--	--

7. Prepared by: Name: Rocco Snart Position/Title: PSC2
 Signature: Rocco Snart

8. Approved by Incident Commander: Name: Troy Hagan
 Signature: Troy Hagan

ORGANIZATION ASSIGNMENT LIST (ICS 203)

1. Incident Name: LICK CREEK/GREEN RIDGE		2. Operational Period: Date From: 8/13/2021 Time From: 0600		Date To: 8/14/2021 Time To: 0600	
3. Incident Commander(s) and Command Staff:			7. Operation Section:		
IC	Troy Hagan	Operations Chief	Shay Rogge, Brad Pietruszka (T)		
Deputy	Bill Waln	Planning Ops			
Safety Officer	Rob Pelton, Pat Medina, Eric White (T), Eric Adams (T)				
Medical	Kevin Ratzmann, Jeff Basamanowicz, Stephanie McGovern (T)		Branch I	Rodney Redinger, Jay Godson (T)	
Information Officer	Dawn Sanchez, Brant Porter, Olivia Bruce (T)	Division/Group	G/K	Nate Kerschner, Isaiah Jimenez (T)	
Liaison Officer	Sam Carle, Mark Neely, Bonnie Gibbons (T)	Division/Group	M	Brandon Bonenberger, Daniel Kamakani (T)	
4. Agency/Organization Representatives:		Division/Group	LICK	Jon Stonelake, Neal McCann (T)	
Agency/Organization	Name	Division/Group	NORTH	Nick Collard, Dave Collins (T)	
USFS AADM	Anthony Botello				
USFS AREP	Susan Piper				
WA DNR	Wyatt Leighton, Tom Schoenfelder		Branch II	Matt Norden, Deon Steinle (T)	
Asotin Co Fire Dist 1	Noel Hardin	Division/Group	A	Tom Kenny, Brad Bryant (T)	
Columbia Co Fire 3	Jeromy Phinney	Division/Group	P	Ian Barrett, Aaron Woodham (T)	
Garfield Co Fire Dist 1	James Cleveland				
WFS	Devin McCosh				
WDFW - LEO	Paul Mosman				
Covid Liaison	Cass Monroe, Steve Medina	Division/Group	NIGHT	Chris Rokosh, Jeff Corser (T)	
5. Planning Section:			8. Air Operations Branch		
Chief	Rocco Snart, Heather Gonzalez, Peter Barth		Air Operations Branch Director	Carolyn Blatz, Matt Lingenfelter (T)	
			Air Support Group Supervisor	Ken Ostrom	
Resource Unit	Kellie Stover, Amy Daniels, Rick Lancaster (T)		Air Tactical Group Supervisor	Tim Haas	
			Helibase Manager	Lee Steward	
Situation Unit	Tara Umphries, Brenda Wasielewski (T)				
Demobilization Unit	Dave Farmer				
9. Finance/Administration Section:					
Incident Meteorologist	Mary Wister	Chief	Mavis Biastoch, Patty Wyatt		
Status Check-In	Rose Long	Time Unit	Sonia Anderson, Kayla Clark		
Fire Behavior	Larry Long	Cost Unit	Kristie Bowen (T)		
Documentation Unit	Spencer Pollock (V)	Compensation Unit	Pearl Cowan		
GIS Specialist	Sarlyn McCormick, Jean Olson, Faith Dzedzic, Sarah Strehle (T)				
Strategic Planner					
Long Term Analyst	Krista Gollnick (V), Kirk Will (T)				
Training Specialist	Amy Daniels, Heather Gonzalez (T)				
6. Logistics Section					
Chief	Wally Leander, Randy Spiering, Darin Gehring				
Ground Support Unit	Jamie Rietz				
Communications	Jim Midyett				
Facilities - ICP	Monty Bollock, Ken Hehr, David Brown				
Facilities - Rose Spike	Mike Kinne				
IT Specialist	Kevin Watts, Jason Reynolds (T)				
Supply Unit	Robin Brooks, Nate Haynes (T)				
Food Unit	Clyde Leggins				
Security	Darrell Hanson, Clyde Harris (T)				
Prepared By: Name: Amy Daniels Position/Title: RESL Signature: <i>Amy Daniels</i>					
ICS 203		Date/Time: 8/12/2021 2100 hours		NIMS IAP	



Lick Creek / Green Ridge Weather Forecast



FORECAST NO: 33
FORECAST FOR: Friday Operational Period
SHIFT DATE: 8/13/2021
DATE AND TIME ISSUED: 8/12/2021 at 1900 PDT

NAME OF FIRE: Lick Creek/Green Ridge
UNIT: OR-UMF
SIGNED: *Mary Wister* - Incident Meteorologist
240-778-5303 (cell) / mary.wister@noaa.gov

...Hot and Dry conditions will persist through Saturday...

WEATHER DISCUSSION: Hot and dry conditions will be the primary fire weather concerns through Saturday. Light winds at the surface and aloft will keep thick smoke and poor visibilities for most of the fire, especially Branch II. Poor humidity recoveries tonight will mean another extended burn period. Saturday's temperatures and humidity will vary little from today, but there will be a slight uptick in winds during the afternoon

TODAY:

WEATHER: Thin high clouds. Smoky.
MAXIMUM TEMPERATURE: 85-90° above 5000 feet. 98-102° valley bottoms.
MINIMUM RELATIVE HUMIDITY: 16-21% above 5000 feet. 10-15% valley bottoms.
20-FOOT RIDGETOP WINDS: Light and variable in the morning...becoming North-Northwest 5-10 mph.
GREEN RIDGE CREEKS: Upslope/Upcanyon 3-8 mph.
CHANCE OF WETTING RAIN ($\geq 0.10''$): 0%. .
HAINES INDEX: 3 (Very Low)
INVERSION/STABILITY: Low level inversion lifts around 1000. Mid-level inversion.

TONIGHT:

WEATHER: Partly cloudy. High clouds. Smoky.
MINIMUM TEMPERATURE: 68-72° above 5000 feet. 55-60° valley bottoms.
MAXIMUM RELATIVE HUMIDITY: 30-35% above 5000 feet. Around 70% valley bottoms.
20-FOOT RIDGETOP WINDS: North-Northwest wind 5-10 mph becoming light and variable overnight.
GREEN RIDGE CREEKS: Downslope/Down canyon 2-5 mph.
CHANCE OF WETTING RAIN ($\geq 0.10''$): 0% .
LIGHTNING ACTIVITY LEVEL: 1.
HAINES INDEX: 3 (Very Low)
INVERSION/STABILITY: Stable. Low and mid-level inversion.

SATURDAY:

WEATHER: Partly cloudy. Smoky.
MAXIMUM TEMPERATURE: 85-90° above 5000 feet. 98-102° valley bottoms.
MINIMUM RELATIVE HUMIDITY: 18-23% above 5000 feet. 12-17% valley bottoms.
20-FOOT RIDGETOP WINDS: Southwest around 5 mph...becoming West-Northwest 8-12 mph with gusts to 17 mph late afternoon.
GREEN RIDGE CREEKS: Upslope/Upcanyon 3-8 mph.
CHANCE OF WETTING RAIN ($\geq 0.10''$): 0%. .
HAINES INDEX: 4 (Low).
INVERSION/STABILITY: Low level inversion lifts around 0900. Increasing instability.

FIRE BEHAVIOR FORECAST

FORECAST NUMBER: 18	TYPE OF FIRE: Wildfire
FIRE NAME: Lick Creek & Green Ridge Fires	OPERATIONAL PERIOD: 08-13-2021 24 Hour
DATE ISSUED: 08-12-2021	TIME ISSUED: 2000
UNIT: Umatilla NF OR-UMF-000658 & 000659	SIGNED: //s// Larry Long FBAN

INPUTS

****See the attached Incident Weather Forecast****

OUTPUTS FIRE BEHAVIOR

GENERAL: Fire behavior should be moderate again today with the lower wind speeds. The lower wind speeds will result in slower rates of speed and decreased fire intensity. But, you can expect torching and spotting throughout the day and into the night shift due to the low RH's and high temperatures. We are expecting that the fuel moistures will drop into a critical stage this weekend and this will result in an increase in fire activity through Sunday and Monday with the increased wind speeds predicted..

Probability of ignition is 90% with spotting distances of 1000 feet possible. Haines Index 3

1-hour fuel moistures: 3%, 10 hours at 4%, 100 hours at 7%, 1000-hour fuels are ~8 % and live fuel moistures are at around 75-95%. ERCs are above the 90th percentile.

Fuel model	Max. Flame Length	Day Shift ROS	Night Shift ROS	Spotting
Timber little and understory TU5/TL4	8-9 ft.	9-13 ch/hr	7-10 ch/hr	.2 miles
Short Grass/Shrub – GR2	2-3 ft.	7-11 ch/hr	2-4 ch/hr	.2 miles

SPECIFIC:

Green Ridge: The fire will continue to progress up and out of the drainages, pushed by an upslope wind of 2-5 MPH. The fire will be active in the heavier concentrations of fuels as the winds surface causing torching and spotting. The active line in divisions A & P will continue to move to the south and southeast. The Lick Creek fire has provided an effective barrier towards the east.

Lick Creek: The NNW winds today should again be favorable by pushing the heat and smoke into the interior. Expect interior fuels to continue to consume and put off smoke.

Night Division: Due to the late burning periods, anticipate daytime burning conditions to continue well into the late evening and continuing until the downslope winds set up and/or the humidity recovers.

AIR OPERATIONS:

Heavy smoke may hamper air operations.

SAFETY

Local Thresholds – **WATCHOUT:** Combinations of any of these factors can greatly increase fire behavior:

Elevations	20' Winds +15 mph	RH <20%	Temp +80°	1000hr Fuel <7%
3000 –5500'	NNW 5-10 mph	10-15%	98-102°	~8%

ASSIGNMENT LIST (ICS 204 WF)

CONTROLLED UNCLASSIFIED
INFORMATION//BASIC

1. Incident Name: LICK CREEK/GREEN RIDGE	2. Operational Period: Date From: 08/13/21 Date To: 08/14/21 Time From: 0600 Time To: 0600	3. Branch Division I G/K
---	---	---

4. Operations Personnel:

Operations Section Chief: Shay Rogge, Brad Pietruszka (T)	Planning Ops
Branch Director: Rodney Redinger, Jay Godson (T)	Safety: Rob Pelton, Eric White (T)
Division/Group Supervisor: Nate Kerschner, Isaiah Jimenez (T)	Air Attack: Tim Haas

5. Resources Assigned:

Resource Identifier	ALS	LWD	Leader	Personnel	Request #	Hours	Reporting Location
TFLD Nilson		8/26	Nilson	1	O-523	0600-2200	Dayton Spike
HC2 Mosqueda Ref GR		8/17	Equihua	20	C-45	0600-2200	Dayton Spike
ENG4 Hi Country GR		8/19	Burnette	3	E-127	0600-2200	Dayton Spike
ENG6 Terrance Titus		8/26	Lambrecht	2	E-255	0600-2200	Dayton Spike
WTT2 Christman Trucking GR		8/20	Blazek	1	E-2	0600-2200	Dayton Spike
WTT2 Overpeck GR		8/17	Melton	1	E-3	0600-2200	Dayton Spike
DO22 Alpine GR		8/17	Briggs	2	E-93	0600-2200	Dayton Spike
DO23 Pine Mountain GR		8/13	Bruland	1	E-175	0600-2200	Dayton Spike
FEL1 Bruce Young GR		8/22	McCleran	2	E-79	0600-2200	Dayton Spike
MAST Tucannon Outfitters GR		8/21	Martin	1	E-107	0600-2200	Dayton Spike
SOFR(T) Lowry GR		8/16	Lowry	1	O-337	0600-2200	Dayton Spike
EMTF Holborn GR		8/17	Holborn	1	O-281	0600-2200	Dayton Spike
EMTF Merrell GR		8/18	Merrell	1	O-359	0600-2200	Dayton Spike

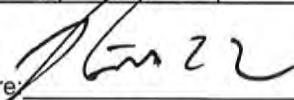
6. Work Assignments:
 Plumb handline from DP-40 to 050 Road.
 Continue to improve where needed on 46 Road north of Godman staging to DP-220 DIV M break.
 Patrol and mop up from DP-220 to Godman staging.

7. Special Instructions:
 Adventure Medics (E-77; LWD 8/21) located @ DP-240
 RAT1 (E-138; LWD 8/14) located on Skyline Drive
 DIVS need to identify equipment to be sent in an event of an IA within TFR. Operations will identify closest resources to respond to new incident.
 Please ensure 3/32" fish screens are used at all draft sites in Punjab Creek, Touchet, and Tucannon Rivers.

Lead READ Will Marquardt: 530-402-6202

8. Communications

Name	Ch	Function	Rx Freq	Rx Tone	Tx Freq	Tx Tone	Notes
SEE ICS 205 COMM PLAN							

9. Prepared by: Name: Kellie Stover, Amy Daniels, Rick Lancaster(T) RESL Signature: 

ICS 204 Date/Time: 8/12/2021 2200 Personnel Count: 37

ASSIGNMENT LIST (ICS 204 WF)

CONTROLLED UNCLASSIFIED
INFORMATION//BASIC

1. Incident Name:	2. Operational Period:	3. Branch	Division
LICK CREEK/GREEN RIDGE	Date From: 08/13/21 Date To: 08/14/21 Time From: 0600 Time To: 0600	I	M

4. Operations Personnel:			
Operations Section Chief: Shay Rogge, Brad Pietruszka (T)	Planning Ops		
Branch Director: Rodney Redinger, Jay Godson (T)	Safety: Rob Pelton, Eric White (T)		
Division/Group Supervisor: Brandon Bonenberger, Daniel Kamakani (T)	Air Attack: Tim Haas		

5. Resources Assigned:							
Resource Identifier	ALS	LWD	Leader	Personnel	Request #	Hours	Reporting Location
TFLD(T) Bowen		8/20	Bowen	1	O-463	0600-2200	Wooten Camp
TFLD(T) Dary		8/21	Dary	1	O-460	0600-2200	Wooten Camp
HC2IA UMF Crew 3		8/21	Wagner	20	C-104	0600-2200	Rose Spike
HC2IA Vet Crew		8/20	Leggett	18	C-105	0600-2200	Rose Spike
HC2 Blue Mountain GR		8/17	Perez	20	C-43	0600-2200	Rose Spike
ENG4 Chewack LC		8/17	Stark	3	E-85	0600-2200	Wooten Camp
ENG4 David Carroll GR		8/13	Garcia	3	E-113	0600-2200	Wooten Camp
WTS2 Panther DG		8/18	Davis	1	E-45	0600-2200	Wooten Camp
WTS2 Lovato GR		8/14	Lovato	1	E-135	0600-2200	Wooten Camp
WTS2 Rahi GR		8/19	Rahi	1	E-136	0600-2200	Wooten Camp
WTS2 Alder Creek Fire GR		8/14	Beaman	1	E-169	0600-2200	Wooten Camp
WTS2 Able 2 GR		8/14	Smith	1	E-174	0600-2200	Wooten Camp
WTS3 JTS 2 GR		8/31	Elam	1	E-172	0600-2200	Wooten Camp
FMOD Mill Creek GR		8/20	Johnson	2	O-442	0600-2200	Wooten Camp
SOF2 Roberts		8/17	Roberts	1	O-567	0600-2200	Wooten Camp
SOFR Grant GR		8/13	Grant	1	O-294	0600-2200	Wooten Camp
SOFR Foco GR		8/18	Foco	1	O-368	0600-2200	Wooten Camp
EMTF Jonassen GR		8/16	Jonassen	1	O-196	0600-2200	Wooten Camp

6. Work Assignments:
 Hold and mop-up from 40 Road to the DIV K/M break.
 Burnout islands as needed.
 Coordinate with other Divisions for additional holding resources.
 Improve handlines where possible.
 Secure spot fires north of DIV K/M containment lines.

7. Special Instructions:
 REMS 10 (E-185) located @ DP-17
 Front Line Medical (E-60) located @ DP-220
 Wilderness Medics (E-39) located @ DP-17
 DIVS to identify equipment to be sent in an event of an IA within TFR. Operations will identify closest resources to respond to new incident.
 Please ensure 3/32" fish screens are used at all draft sites in Punjab Creek, Touchet, and Tucannon Rivers.

Lead READ Will Marquardt: 530-402-6202

8. Communications

Name	Ch	Function	Rx Freq	Rx Tone	Tx Freq	Tx Tone	Notes
SEE ICS 205 COMM PLAN							

9. Prepared by: Name: Kellie Stover, Amy Daniels, Rick Lancaster(T) RESL

Signature:

ICS 204 Date/Time: 8/12/2021 2200 Personnel Count: 78

ASSIGNMENT LIST (ICS 204 WF)

CONTROLLED UNCLASSIFIED
INFORMATION//BASIC

1. Incident Name:	2. Operational Period:	3. Branch	Division
LICK CREEK/GREEN RIDGE	Date From: 08/13/21 Date To: 08/14/21 Time From: 0600 Time To: 0600	I	LICK

4. Operations Personnel:	
Operations Section Chief: Shay Rogge, Brad Pietruszka (T)	Planning Ops
Branch Director: Rodney Redinger, Jay Godson (T)	Safety: Rob Pelton, Eric White (T)
Division/Group Supervisor: Jon Stonelake, Neal McCann (T)	Air Attack: Tim Haas

5. Resources Assigned:							
Resource Identifier	ALS	LWLD	Leader	Personnel	Request #	Hours	Reporting Location
TFLD(T) Walters GR		8/16	Walters	1	O-329	0600-2200	Wooten Camp
HC1 Silver City IHC GR		8/20	Romero	21	C-96	0600-2200	Rose Spike
HC1 Prescott IHC		8/26	Fisher	20	C-100	0600-2200	Rose Spike
SMOD Williams 7-1		8/25	Sweeney	10	O-520	0600-2200	Rose Spike
STEN Cwiak GR		8/14	Cwiak	1	O-300	0600-2200	Wooten Camp
ENG4 Thunderbolt GR		8/13	Grant	3	E-160	0600-2200	Wooten Camp
ENG6 Flashover GR		8/13	Gilmore	2	E-162	0600-2200	Wooten Camp
ENG6 Earth Industries		8/25	Voss	3	E-246	0600-2200	Wooten Camp
ENG3 B-5232		8/26	Fry	4	E-256	0600-2200	Rose Spike
WTS2 Ash Kickers DG		8/23	Waldron	1	E-15	0600-2200	Wooten Camp
WTS2 Minam River DG		8/13	Henderson	1	E-40	0600-2200	Wooten Camp
WTS2 Huffman GR		8/20	Huffman	1	E-167	0600-2200	Wooten Camp
WTS2 Martin GR		8/15	Martin	1	E-173	0600-2200	Wooten Camp
WTS2 McDonald		8/24	McDonald	1	E-247	0600-2200	Wooten Camp
WTS3 JTS 1 GR		8/31	Elmer	1	E-170	0600-2200	Wooten Camp
HEQB(T) Chris Carney		8/21	Carney	1	O-458	0600-2200	Rose Spike
MAST Hayden 2 GR		8/13	Hayden	2	E-72	0600-2200	Rose Spike
DOZ2 Overpeck GR		8/18	Overpeck	2	E-4	0600-2200	Rose Spike
DOZ3 Traverse GR		8/13	Wilcox	2	E-177	0600-2200	Rose Spike
FMOD A&E Tree GR		8/19	Wilke	2	O-118	0600-2200	Wooten Camp

6. Work Assignments:
 Patrol and mop up as needed to secure fire's edge along the Lick/M division break.
 Periodic patrols of the southern portion of the Lick Fire. Continue to assist Division M with water support as needed.
 Assess and implement structure protection in the Stentz Summer Group Home Development.
 Look for and suppress spot fires where safe to do so.

7. Special Instructions:
 TFLD Severs (519-780-8736). Local resource may be in the Division. Lead READ Will Marquardt: 530-402-6202
 Divisions to identify equipment to respond to an IA within the TFR. Operations will identify closest resources to respond to a new incident.
 Please make sure 3/32" fish screens are used at all draft sites in Punjab Creek, Touchet, and Tucannon Rivers.
 Operational briefing to be broadcasted at Wooten Camp at 0630. See IAP for details.

Name	Ch	Function	Rx Freq	Rx Tone	Tx Freq	Tx Tone	Notes
SEE ICS 205 COMM PLAN							

9. Prepared by: Name:	Kellie Stover, Amy Daniels, Rick Lancaster(T)	RESL	Signature:
ICS 204	Date/Time: 8/12/2021 2200	Personnel Count: 80	

ASSIGNMENT LIST (ICS 204 WF)

CONTROLLED UNCLASSIFIED
INFORMATION//BASIC

1. Incident Name:	2. Operational Period:	3. Branch	Division
LICK CREEK/GREEN RIDGE	Date From: 08/13/21 Date To: 08/14/21 Time From: 0600 Time To: 0600	I	NORTH

4. Operations Personnel:			
Operations Section Chief: Shay Rogge, Brad Pietruszka (T)	Planning Ops		
Branch Director: Rodney Redinger, Jay Godson (T)	Safety: Rob Pelton, Eric White (T)		
Division/Group Supervisor: Nick Collard, Dave Collins (T)	Air Attack: Tim Haas		

5. Resources Assigned:							
Resource Identifier	ALS	LWD	Leader	Personnel	Request #	Hours	Reporting Location
TFLD Mondragon		8/22	Mondragon	1	O-421	0600-2200	Rose Spike
WTS2 MVP Team DG		8/16	Konrad	1	E-48	0600-2200	Rose Spike
WTS2 Green Mountain GR		8/17	Stevens	1	E-168	0600-2200	Rose Spike
WTS2 Hek Jones GR		8/14	Long	1	E-171	0600-2200	Rose Spike
FMOD Swedberg		8/22	Wadley	2	O-439	0600-2200	Rose Spike
FMOD Woodworth GR		8/20	Woodworth	2	O-441	0600-2200	Rose Spike
HEQB Beehler		8/23	Beehler	1	O-501	0600-2200	Rose Spike
DOZ3 Bruce Young GR		8/15	Johnson	2	E-85	0600-2200	Rose Spike
DOZ3 Kiser & Kiser 1 GR		8/15	Kiser	1	E-178	0600-2200	Rose Spike
DOZ3 Kiser & Kiser 2 GR		8/15	Mackay	1	E-179	0600-2200	Rose Spike
FEL2 Wyeast GR		8/14	Sandoz	2	E-102	0600-2200	Rose Spike
MAST Bruce Young GR		8/16	Gentry	2	E-69	0600-2200	Rose Spike
MAST Eagle CAP GR		8/15	Pierce	2	E-70	0600-2200	Rose Spike
GRD Alvord GR		8/13	Davis	2	E-132	0600-2200	Rose Spike
CHIP JML		8/23	Jasiel	3	E-241	0600-2200	Rose Spike
SOFR Foco GR		8/18	Foco	1	O-368	0600-2200	Rose Spike

6. Work Assignments:
 Construct contingency line on the 4016 Road from the 40 Road to the Lick Fire.
 Coordinate contingency line construction with READs.
 Communicate with Division Supervisors for holding resources as needed.

7. Special Instructions:
 Command 11 repeater is operational. Lead READ Will Marquardt: 530-402-6202
 DIVS to identify equipment to be sent in an event of an IA within TFR. Operations will identify closest resources to respond to new incident.
 Please make sure 3/32" fish screens are used at all draft sites in Punjab Creek, Touchet, and Tucannon Rivers.

8. Communications

Name	Ch	Function	Rx Freq	Rx Tone	Tx Freq	Tx Tone	Notes
SEE ICS 205 COMM PLAN							

9. Prepared by: Name:	Kellie Stover, Amy Daniels, Rick Lancaster(T)	RESL	Signature:
ICS 204	Date/Time: 8/12/2021 2200		Personnel Count: 25

ASSIGNMENT LIST (ICS 204 WF)

CONTROLLED UNCLASSIFIED
INFORMATION//MITTENS

1. Incident Name:	2. Operational Period:	3. Branch	Division
LICK CREEK/GREEN RIDGE	Date From: 08/13/21 Date To: 08/14/21 Time From: 0600 Time To: 0600	II	A

4. Operations Personnel:			
Operations Section Chief:	Shay Rogge, Brad Pietruszka (T)	Planning Ops	
Branch Director:	Matt Norden, Deon Steinle (T)	Safety:	Rob Pelton, Eric White (T)
Division/Group Supervisor:	Tom Kenny, Brad Bryant (T)	Air Attack:	Tim Haas

5. Resources Assigned:							
Resource Identifier	ALS	LWD	Leader	Personnel	Request #	Hours	Reporting Location
ENG4 Alder Creek 1 GR		8/13	Paz	3	E-150	0600-2200	Dayton Spike
ENG4 Alder Creek 2 GR		8/15	Stewart	3	E-164	0600-2200	Dayton Spike
ENG4 Terrance Titus		8/26	Freitag	3	E-285	0600-2200	Dayton Spike
ENG6 AZ E161 LC		8/17	Jones	3	E-105	0600-2200	Dayton Spike
ENG6 Rock Creek GR		8/14	Mitchell	3	E-111	0600-2200	Dayton Spike
ENG6 Griz One		8/26	Berke	3	E-264	0600-2200	Dayton Spike
SOFR(T) Lowry GR		8/16	Lowry	1	O-337	0600-2200	Dayton Spike

6. Work Assignments:
 Continue to improve line where needed from DIV A/G break east to DIV A/S break.
 Take action as needed to ensure that existing structures and infrastructures do not sustain further damage.
 Provide for structure protection to Little Turkey Tail Recreation Residence Area.

7. Special Instructions:

Fireline Medics (E-59) located @ Wooten Camp 2

Adventure Medics (E-77) located @ DP-240

RAT1 (E-138) located on Skyline Drive

DIVS to identify equipment to be sent in an event of an IA within TFR. Operations will identify closest resources to respond to new incident. Please ensure 3/32" fish screens are used at all draft sites in Punjab Creek, Touchet, and Tucannon Rivers.

Lead READ Will Marquardt: 530-402-6202

8. Communications:

Name	Ch	Function	Rx Freq	Rx Tone	Tx Freq	Tx Tone	Notes
SEE ICS 205 COMM PLAN							

9. Prepared by: Name:	Kellie Stover, Amy Daniels, Rick Lancaster(T)	RESL	Signature:
ICS 204	Date/Time: 8/12/2021	2200	Personnel Count: 19

ASSIGNMENT LIST (ICS 204 WF)

CONTROLLED UNCLASSIFIED
INFORMATION//MITTENS

1. Incident Name:	2. Operational Period:	3. Branch	Division
LICK CREEK/GREEN RIDGE	Date From: 08/13/21 Date To: 08/14/21 Time From: 0600 Time To: 0600	II	P

4. Operations Personnel:

Operations Section Chief: Shay Rogge, Brad Pietruszka (T) Branch Director: Matt Norden, Deon Steinle (T) Division/Group Supervisor: Ian Barrett, Aaron Woodham (T)	Planning Ops Safety: Rob Pelton, Eric White (T) Air Attack: Tim Haas
---	--

5. Resources Assigned:

Resource Identifier	ALS	LWD	Leader	Personnel	Request #	Hours	Reporting Location
TBD							

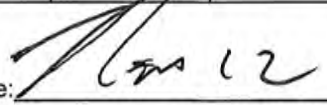
6. Work Assignments:
 Monitor the fire's edge for movement.
 Identify areas to utilize aircraft to reduce fire spread as needed.

7. Special Instructions:
 FOBS Gorsett +1 will be in the Division scouting

8. Communications

Name	Ch	Function	Rx Freq	Rx Tone	Tx Freq	Tx Tone	Notes
SEE ICS 205 COMM PLAN							

9. Prepared by: Name: Kellie Stover, Amy Daniels, Rick Lancaster(T) RESL

Signature: 

ICS 204 Date/Time: 8/12/2021 2200 Personnel Count: 0

ASSIGNMENT LIST (ICS 204 WF)

CONTROLLED UNCLASSIFIED
INFORMATION//BASIC

1. Incident Name:	2. Operational Period:	3. Branch	Division
LICK CREEK/GREEN RIDGE	Date From: 08/13/21 Date To: 08/14/21 Time From: 0600 Time To: 0600		NIGHT

4. Operations Personnel:	
Operations Section Chief: Shay Rogge, Brad Pietruszka (T)	Planning Ops
Branch Director: Troy Mueller	Safety: Rob Pelton, Eric White (T)
Division/Group Supervisor: Chris Rokosh, Jeff Corser (T)	Air Attack: Tim Haas

5. Resources Assigned:							
Resource Identifier	ALS	LWD	Leader	Personnel	Request #	Hours	Reporting Location
ENG4 Inbound E18 GR		8/21	Navarro	3	E-161	1800-1200	Rose Spike
ENG5 Methow River GR		8/14	Hernandez	3	E-159	1800-1200	Rose Spike
ENG6 Eye of the Eagle GR		8/13	Gillian	2	E-147	1800-1200	Rose Spike
ENG6 ONF E619 GR		8/13	Bell	3	E-148	1800-1200	Rose Spike
ENG6 Osprey Wildfire GR		8/23	Roe	3	E-149	1800-1200	Rose Spike
ENG6 Timberrmans Inbound GR		8/13	Thompson	3	E-151	1800-1200	Rose Spike
ENG6 Wilson Farm		8/26	Wilson	3	E-274	1800-1200	Rose Spike
ENG6 Thunderbolt Fire		8/26	Hall	3	E-286	1800-1200	Rose Spike
ENG4 A1 Firestorm		8/26	Petersen	3	E-287	1800-1200	Rose Spike
WTS2 Dahl-Bredine GR		8/27	Dahl-Bredine	1	E-133	1800-1200	Rose Spike
WTS2 Black Range GR		8/14	Sallee	1	E-134	1800-1200	Rose Spike
DOZ3 Mortimore 1 GR		8/13	Mortimore	2	E-176	1800-1200	Rose Spike
DOZ3 Mortimore 2 GR		8/13	Jaeger	2	E-180	1800-1200	Rose Spike
SOF2 Medina		8/20	Medina	1	O-363.9	1800-1200	Rose Spike
SOFR(T) Eric Adams		8/21	Adams	1	O-456	1800-1200	Rose Spike

6. Work Assignments:
 Patrol and improve line where needed.
 Transfer operational needs to Day Operations.
 Take action as needed to ensure that existing structures and infrastructures do not sustain further damage.

7. Special Instructions:
 Frontline Medical (E-61) located @ DP-17 Lead READ Will Marquardt: 530-402-6202
 DIVS to identify equipment to be sent in an event of an IA within TFR. Operations will identify closest resources to respond to new incident.
 Please make sure 3/32" fish screens are used at all draft sites in Punjab Creek, Touchet, and Tucannon Rivers.

Name	Ch	Function	Rx Freq	Rx Tone	Tx Freq	Tx Tone	Notes
SEE ICS 205 COMM PLAN							

9. Prepared by: Name:	Kellie Stover, Amy Daniels, Rick Lancaster(T)	RESL	Signature:	Personnel Count: 34
ICS 204	Date/Time: 8/12/2021	2200		

AIR OPERATIONS SUMMARY 220		Prepared By: Matt Lingenfelter		Prepared: 08/12/2021		Prepared Time: 18:00	
1. INCIDENT NAME: LICK CREEK/GREEN RIDGE		2. OPERATIONAL PERIOD		START TIME:		SUNRISE:	
08/13/2021		08/13/2021		07:30 21:30		05:49 20:06	

3. REMARKS:

“Remember, you fly a firefighting helicopter with your head, not your hands and feet.” Frank Tirebiter

Keep up the solid work pilots, mechanics, fuel service vehicle operators and air crews... We've been flying a lot and you all have been doing a phenomenal job with teamwork, CRM & SMS. Smoke in all divisions will be nasty again tomorrow, make good decisions.

4. MEDICAL RESPONSE AIRCRAFT:

1) Life flight: 911
 2) Short Haul: Walla Walla H-353JR (AS-350B3)

5. TFR:

Lick Creek 1/4930
 119.5250 12,000MSL
 Helibase:
 Walla Walla Regional Airport (KALW)
 N46°05.552 x W118°17.045

*** Follow Medical Plan ICS-206 ***

6. PERSONNEL	NAME	PHONE #	7. FREQUENCIES	AM	FM	8. FIXED-WING Avail/ Type/Make-Model/ N#/ Base
AOBD	Carolyn Blatz	720-693-3194	A/A Primary TFR	119.5250		ATGS Platform: AA N400DS Email Costs to: 2021.greenridge.finance@firenet.gov lickcreekhelibase@gmail.com
AOBD(T)	Matt Lingenfelter	805-705-8621	A/A Secondary	123.7000		
ASGS	Ken Ostrom	307-272-3266	A/G Branch 1 Primary		169.2000	
			A/G Branch 2 Logistics		167.0750	
ATGS	Tim Haas	307-388-9997	A/G Branch 2 Primary		168.2750	
HEBM Walla Walla	Lee Steward	775-220-6364	A/G Branch 2 Secondary		168.5250	
Mobile Retardant Base	Clint Webley	509-398-7860	AIRGUARD		168.6250 TX 110.9	
Blue Mountain	Aircraft Desk	541-963-7171	VMED 28		155.3400	

9. HELICOPTERS (Use Additional Sheets as Necessary)

FAA N#	TY	MAKE/ MODEL	BASE	START	AVAIL	REMARKS	FAA N#	TY	MAKE/ MODEL	BASE	START	AVAIL	REMARKS
187CH	1	BV CH-46	ALW	0830	0900	Bucket	359EV	3	AS-350B3	ALW	0830	0900	Recon, Bucket, PAX, Cargo
612CK	1	Sikorsky SH-3H	ALW	0830	0900	Bucket	353JR	3	AS-350B3	ALW	0830	0900	Recon, Bucket, PSD, PAX, Cargo
604CK	1	UH-60	ALW	0830	0900	Bucket	516LE	3	Bell 206L	ALW	1000	1100	Recon, Bucket, Cargo, PAX


by: /s/ Matt Lingenfelter AOB(t)

CUI

INCIDENT RADIO COMMUNICATIONS PLAN I-205				1. INCIDENT NAME GREEN RIDGE		2. DATE/TIME PREPARED 08/12/21		3. OPERATIONAL PERIOD DATE/TIME 08/13/21 0600 - 08/14/21 0600	
4. BASIC RADIO CHANNEL UTILIZATION									
Ch #	Channel Name	Assignment	RX Frequency	RX Tone/NAC	TX Frequency	TX Tone/NAC	Mode Digital (D) Analog (A) Mixed (M)	Remarks	
1	TAC 1	DIV M / DIV P	168.0500	151.4	168.0500	151.4	A		
2	TAC 2	DIV A / DIV NIGHT	168.6000	151.4	168.6000	151.4	A		
3	TAC 3	NORTH CONTING	166.7250	151.4	166.7250	151.4	A		
4	TAC 4	LICK/GREEN RDG	166.7750	151.4	166.7750	151.4	A		
5	TAC 5		168.2500	151.4	168.2500	151.4	A		
6	CMD 3	CMD 3	170.0250	131.8	165.4500	131.8	A		
7	CMD 7	CMD 7	170.0000	151.4	166.6750	151.4	A		
8	CMD 8	CMD 8	170.6875	151.4	166.5750	151.4	A		
9	CMD 9	CMD 9	170.4250	151.4	168.0750	151.4	A		
10	CMD 10	CMD 10	172.0250	151.4	162.1750	151.4	A		
11	CMD 67	CMD 67	172.0750	151.4	162.2000	151.4	A		ABOVE ROSE SPIKE
12	CMD 12	CMD 12	170.4125	131.8	165.9625	131.8	A		
13	A/G PRI		168.2750		168.2750		A		A/G PRIMARY
14	A/G SEC		168.5250		168.5250		A		A/G SECONDARY
15	VMED 28		155.3400		155.3400	156.7	A		AIR MEDICAL
16	AIRGUARD	EMERGENCY USE ONLY!	168.6250		168.6250	110.9	A		EMERGENCY USE ONLY!
ICS-205 Prepared By:		JIM MIDYETT		CLONE VERSION: 08/13/21		ALWAYS POST A HUMAN REPEATER TO RELAY MESSAGES OUT OF AREAS WHERE YOU DONT HAVE ADEQUATE COMMUNICATIONS			
				DPH: PRESS & HOLD # KEY TO CHECK VERSION.					
				KNG: LOOK AT ZONE LABEL					

CUI

INCIDENT RADIO COMMUNICATIONS PLAN I-205		1. INCIDENT NAME		2. DATE/TIME PREPARED		3. OPERATIONAL PERIOD DATE/TIME					
Lick Creek Fire		8/12/2021		08/13/21 0600 to 08/14/21 0600							
4. BASIC RADIO CHANNEL UTILIZATION											
Ch #	Function	Channel Name	Assignment	RX Freq	N/W	RX Tone/NAC	TX Freq	N/W	TX Tone/NAC	Mode Analog (A) Digital (D) Mixed (M)	Remarks
1	COMMAND	CMD 1	OUT OF SERVICE		N			N		A	Removed from Service. unavailable for use.
2	COMMAND	CMD 2	COMMAND	170.4125	N	131.8	165.9625	N	131.8	A	REMOVING 08/13/21
3	COMMAND	CMD 3	COMMAND	170.0250	N	131.8	165.4500	N	131.8	A	CLEARWATER LOOKOUT Linked to Green Ridge
4	COMMAND	CMD 4	OUT OF SERVICE		N			N		A	
5	TACTICAL	TAC 5	LICK BRANCH	168.0500	N	131.8	168.0500	N	131.8	A	
6	TACTICAL	TAC 6	UNASSIGNED	168.6000	N	131.8	168.6000	N	131.8	A	
7	TACTICAL	TAC 7	LICK/GREEN RIDGE	166.7250	N	131.8	166.7250	N	131.8	A	
8	TACTICAL	TAC 8	UNASSIGNED	166.7750	N	131.8	166.7750	N	131.8	A	
9	TACTICAL	TAC 9	UNASSIGNED	168.2500	N	131.8	168.2500	N	131.8	A	
10	TACTICAL	TAC 10	UNASSIGNED	168.2000	N	131.8	168.2000	N	131.8	A	
11	COMMAND	CMD 11	COMMAND	169.4500	N	131.8	172.5500	N	131.8	A	Located near DP 57
12	COMMAND	COTTWD	LOCAL RPTR	173.7750	N	131.8	164.8250	N	127.3	A	Located 18 M SE of Pottery
13	AIR TO GROUND	VMED28	MED A/G	155.3400	N		155.3400	N		A	Use with Air Ambulance
14	AIR TO GROUND	A/G PRI	A/G	169.2000	N		169.2000	N		A	
15	AIR TO GROUND		UNAVAILABLE		N			N		A	Reassigned to Green Ridge Fire
16	AIRGUARD	AIRGUARD	AIR GUARD	168.6250	N		168.6250	N	110.9	A	Emergency Aircraft Contact
5. Special Instructions:											
6. I-205 Prepared By: Communications Unit Leader				Name: JIM MIDYETT				Signature: Jim Midyett			

INCIDENT RADIO COMMUNICATIONS PLAN I-205		1. INCIDENT NAME		2. DATE/TIME PREPARED		3. OPERATIONAL PERIOD DATE/TIME					
		IA		8/8/2021		08/13/21 0600 TO 08/14/21 0600					
4. BASIC RADIO CHANNEL UTILIZATION											
Ch #	Function	Channel Name	Assignment	RX Freq	N/W	RX Tone/NAC	TX Freq	N/W	TX Tone/NAC	Mode Analog (A) Digital (D) Mixed (M)	Remarks
1	COMMAND	ST ASOTIN	LOCAL RPTR	159.4200	N	D365	151.2950	N	D365	A	6 Miles W of Anatonne
2	COMMAND	COTTNWD	LOCAL RPTR	173.7750	N	131.8	164.8250	N	127.3	A	18 Miles SE of Pomeroy
3	COMMAND	SADDLE	LOCAL RPTR	173.7750	N	131.8	164.8250	N	146.2	A	29 Miles SE of Pomeroy
4	COMMAND	OREGON	LOCAL RPTR	173.7750	N	131.8	164.8250	N	167.9	A	25 Miles S of Pomeroy
5	COMMAND	DIAMOND	LOCAL RPTR	173.7750	N	131.8	164.8250	N	151.4	A	
6	TACTICAL	COM	DNR TACTICAL	151.4150	N	103.5	151.4150	N	103.5	A	
7	TACTICAL	TAC 1	DNR TACTICAL	151.3100	N	103.5	151.3100	N	103.5	A	
8	TACTICAL	TAC 2	DNR TACTICAL	151.3400	N	103.5	151.3400	N	103.5	A	
9	TACTICAL	TAC 3	DNR TACTICAL	151.3500	N	103.5	151.3500	N	103.5	A	
10	TACTICAL	REDNET	TACTICAL	153.8300	N		153.8300	N		A	
11	TACTICAL	UMF-TAC	TACTICAL	168.2375	N	131.8		N	131.8	A	
12	AIR TO GROUND	A/G 1	LOCAL A/G	159.2700	N	103.5	159.2700	N	103.5	A	
13	AIR TO GROUND	A/G 9	LOCAL A/G	166.9125	N		166.9125	N		A	
14	AIR TO GROUND	A/G 44	LOCAL A/G	167.6250	N		167.6250	N		A	
15	AIR TO GROUND	VMED28	MEDICAL A/G	155.3400	N		155.3400	N		A	
16	AIRGUARD	AIR GUARD	AIR GUARD	168.6250	N		168.6250	N	110.9	A	Emergency Aircraft Contact
5. Special Instructions:											
6. I-205 Prepared By: Communications Unit Leader						Name: JIM MIDYETT		Signature: 			



Human Resource Message



Lick Creek & Green Ridge Fires - August 13, 2021 – 0600-0600

Communication: is simply the act of transferring information from one place, person, or group to another. Every communication involves (at least) one sender, a message, and a recipient. These include our emotions, the cultural situation, the medium used to communicate, and even our location.

We communicate every day in many ways regarding the “how, what, why and where”, which is so critical in wildland firefighting. So, how do you know if what you said is understood by the recipients? That is a good question. Well, the answer to that is by the actions or reactions of those recipients. In this line of work, good communication is critical. To communicate well is to understand and be understood.

Misunderstandings often occur because we do not understand, *and we are often misunderstood.*

“Over here.” No, “over here.”



Be safe, have a great day, communicate effectively & respectfully!

De instrucciones claras y asegúre que son entendidas.

Quote for the Day: “To effectively communicate, we must realize that we are all different in the way we perceive the world and use this understanding as a guide to our communication with others.” Anthony Robbins

Mutual Respect – Diversity – Inclusion - Teamwork!

TEAM BLACK FINANCE PROCEDURES

****Green Ridge, Lick Creek, and Dry Gulch Fires****

We are using a 100% electronic time submission process. Please submit time daily.
PLEASE REPORT TIME BASED ON THE FIRE YOU WORKED ON.

Resources just checking in: After checking in using the QR Code on the front of an IAP, please continue to the Finance portion and complete the Finance Check-In Form. Don't forget to submit the appropriate forms/documents electronically.

E-mail time to: 2021.greenridge.finance@firenet.gov

Please include resource type (**OVERHEAD, EQUIPMENT OR CREW**) in subject line. Please send electronic documents OR pictures.

If you are sending other information or questions to the finance email, please send separate email with appropriate subject line, ie: "Question on time" or "Explanation of travel."



To electronically demob from finance: Submit final CTRs and Shift Tickets to the above finance email. Include your email address and phone number. Make sure CTRs/Shift Tickets are complete and legible. **Once you have turned in your final CTRs/Shift Tickets you are released from Finance.** A final timesheet (OF288) and/or Invoice (OF286) will be emailed to you for review. Please respond with a confirmation email of accuracy. If there are errors or edits needed, contact-46 finance asap by replying to the email.

Travel safely home without having to deal with finance in person!

If you are unable to send electronic CTRs/Shift Tickets due to lack of connectivity, or incompatible devices, hard copies will be accepted. Coordinate with your supervisor for delivery to Finance. BE SURE TO INCLUDE PHONE NUMBER AND EMAIL ADDRESS. When you are ready to demob, call one of the Finance numbers below.

If you have any questions, please contact us at:

Finance 971-245-0248 or 971-727-7461; Comp/Claims 541-969-2396

Demob Tips

*****Note: If you have cell phone coverage and have nothing to return to Communications or Supply, you will not physically need to come to demob.*****

After being notified by your supervisor of your tentative release date:

1. Return all supplies, radios, etc. that were checked out. If you have no items to return, you can complete Finance and Demob virtually. All line vehicles must complete a WEED WASH and have a post-inspection of their vehicles.
2. Submit time for all personnel and equipment to Finance per directions in IAP.
3. Once you receive confirmation from FINANCE with a copy of your OF-288 and other financial documentation, you are free to complete Step 4 and travel home.
4. Complete Demob Checkout Sheet using QR code on the cover of the IAP. If unable to use, see demob. Once demob receives confirmation from Finance and your demob checkout sheet has been electronically submitted, you will be released in the system.

Demob Unit email: 2021.greenridge.demob@firenet.gov (970) 217-6479

Training Specialist Message/Training Process

You do not have to wait until the last work day to complete a position task book (PTB) evaluation. You can complete the evaluation process at any time on the incident. Trainees are not required to check in with the Incident Training Specialist (TNSP). However, Geographic Area Priority Trainee Program participants are strongly encouraged to check in with the TNSP. The TNSP is available to answer questions and/or help guide both the Trainee and Evaluator through the process.

1. Incident trainees should check in early with the TNSP either in person or remotely using the QR code on the IAP cover. Within that QR code exists a training portal.
2. The trainee needs to take ownership of their training assignment. Working closely with their evaluator, identify tasks and learning opportunities that can be documented in their PTB.
3. Ensure all the information is complete and correct on the Evaluation Record and, if being recommended for certification, the PTB Verification/Certification form. Incorrect or incomplete information is a very common issue in PTBs and, all too often, delays certification of a trainee as fully qualified. Please review all information to make sure it is complete, accurate, and legible.
4. The evaluator should complete an Incident Personnel Performance Rating (ICS 225 WF) for the trainee, and submit a copy to the TNSP either in person or a picture copy.
5. Once all the documentation is completed, the trainee will need to close out with the TNSP. The trainee can: 1) stop by and close out in person with TNSP; 2) call the TNSP to go through the Exit Interview Form and discuss how the assignment went; or 3) complete the Exit Interview Form through the QR code link.

Incident Training Specialist email: 2021.greenridge.plans@firenet.gov

TENTATIVE RELEASE DATES & TIMES

08/13/2021

EQUIPMENT

E-129	0700	(ENG4) ENGINE - T4 - LONE WOLF
E-130	0730	(ENG5) ENGINE - T5 - WEST COAST
E-131	0800	(ENG4) ENGINE - T4 - FLASHBACK
E-163	0900	(ENG5) ENGINE - T5 - IRON TRIANGLE

OVERHEAD

O-235	0600	(FOBS) LYON, ZACHARY
O-226	0800	(PIOF) HILSTEIN, RICHARD
O-238	0830	(FOBS) OSBORNE, KYLE
O-278	0930	(TFLD) KRAMER, CHRISTOPHER
O-289	0930	(TFLD) SETZER, CALEB
O-265	1700	(DECK) TREFON JR, WILLIAM

08/14/2021

EQUIPMENT

E-73	0700	(WTS2) R & K WATER SERVICE
E-150	0600	(ENG4) ENGINE - T4 - ALDER CREEK
E-133	0730	(WTS2) TENDER, WATER (SUPPORT) -
E-148	0730	(ENG6) ENGINE - T6 - 619 (E-619)
E-113	0800	(ENG4) DAVID CARROLL GR (DBA
E-135	0800	(WTS2) TENDER, WATER (SUPPORT) -
E-147	0800	(ENG6) ENGINE - T6 - EYE OF THE
E-151	0800	(ENG6) ENGINE - T6 - TIMBERMAN'S
E-138	0830	(RES) REMS UNIT - REMOTE ACCESS
E-160	0830	(ENG4) ENGINE - T4 - A A A
E-162	0900	(ENG6) ENGINE - T6 - FLASHOVER LLC
E-175	0900	(DOZ3) DOZER - T3 - PINE MOUNTAIN

OVERHEAD

O-299	0700	(HECM) AITCHESON, KEVIN
O-178	0800	(IMET) WISTER, MARY
O-294	0830	(SOFR) GRANT, RYAN J
O-295	1600	(ITSS) DEL ARROYO, ROCIO G
O-288	1100	(RCDM) CHERRY, MAC A
O-259	1800	(READ) CLARK, ALEXANDRA N
O-292	1800	(PIOF) HYSLOP, JEREMIAH S

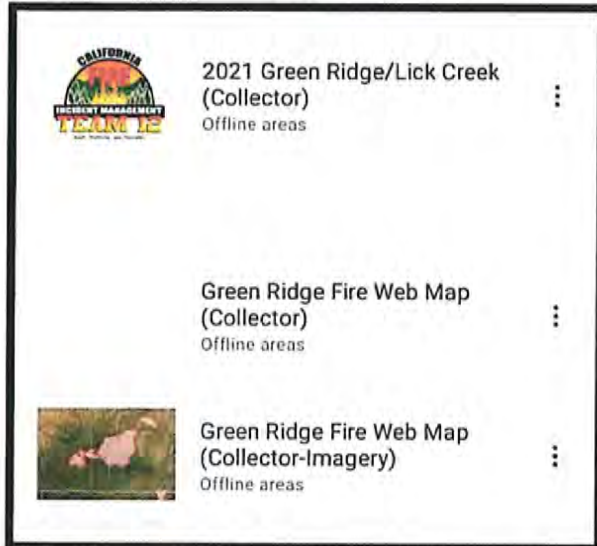
!!IMPORTANT!



Collector Update, Please Read and Heed!!



ASAP: Please SYNC and REMOVE Offline areas for the following maps:



← These 3 maps will be **DISCONTINUED** and **REMOVED FROM USE** starting **Saturday Morning 8/14.**

Don't let your collected data get lost! Sync and Remove your Offline areas for these maps now! **DO NOT** Continue to use these maps!!!

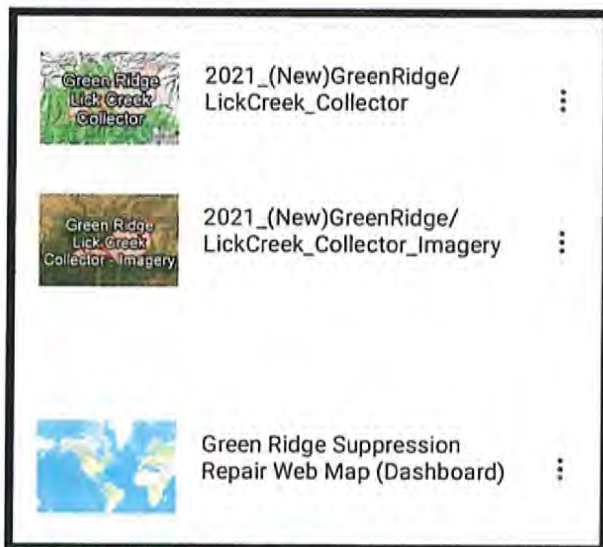
****Discontinued Maps:**

2021 Green Ridge/Lick Creek (Collector)

Green Ridge Fire Web Map (Collector)

Green Ridge Fire Web Map (Collector – Imagery)

Going Forward: Please download new offline areas and use these collector maps:



**** New Maps:**

2021_(New)GreenRidge/LickCreek_Collector

2021_(New)GreenRidge/LickCreek_Collector_Imagery

Green Ridge Suppression Repair Web Map (Dashboard) continues to be in use

Improvements of these maps:

- No pre-defined offline area, choose your own

-Structure Triage features can be collected and edited

These Maps are in the RM Black Mobile Editing Group, email 2021.GreenRidge.situation@firenet.gov



RM Black - Mobile Editing
6 Maps



SURVEY 123 – Structure Triage Green Ridge and Lick Creek Now Available!!! Scan the QR code to find it easily



Transportation Map



Green Ridge
OR-UMF-000659
8/13/2021 24hr
26,648 acres at
8/12/2021@0008

- Wildfire Daily Fire Perimeter
- Dip Site
- Mobile Retardant Base
- Helispot
- Division Break
- Branch Break
- Incident Command Post
- Drop Point
- Camp
- Staging Area
- Mobile Weather Unit
- Repeater
- Water Source
- Wilderness
- County or Equivalent
- Forest Service
- Secondary Hwy
- Local Road
- 4WD

Directions to new ICP:

Take Hwy 12 east 12-15 miles to a sign that says "Camp Wooten".

Turn right at sign and follow paved road to camp.

New ICP
Last Chance
Resort

Branch I

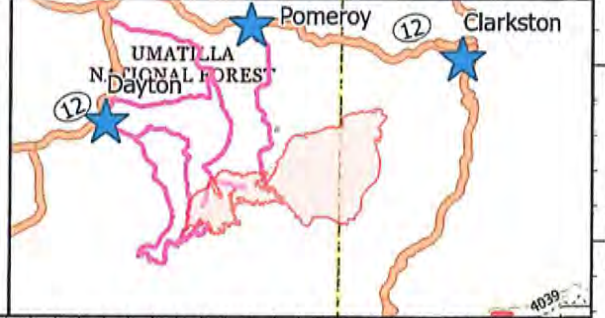
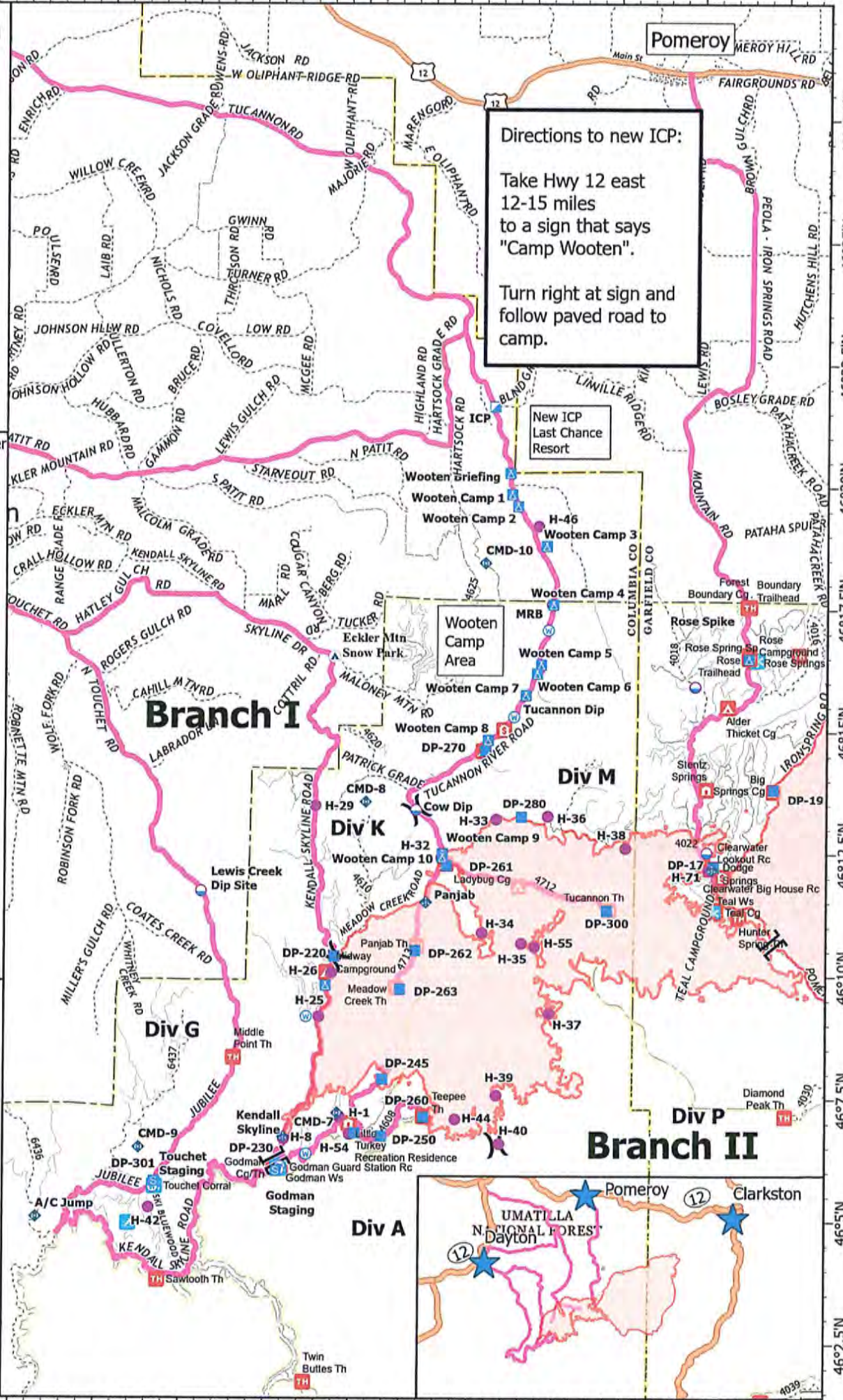
Branch II

Green Ridge Maps

0 1 2 3 Miles

8/12/2021 2004

North American 1983 Datum.





Rocky Mountain IMT Black



Line Supply Order

Date & Time Order was Placed	Order # (BR+DIVS + #)	Location & Time for Delivery (Division/LZ/DP/Lat Long)	Mode of delivery (Driven/Helo/DIVS to Pick up)

Order received in Communications by (name & time):

Order received in Supply by (name & time):

Order received in Transportation by (name & time):

Order received in Helibase by (name & time):

Order shipped to line unit by (name & time): (Send this sheet to the line with the order)

#	Item	Amount	Item	Amount
1.	Meals, Breakfasts	ea	30. Slingable Blivet	ea
2.	Meals, Lunches	ea	31. Folding Tank, specify size	ea
3.	Meals, Dinners	ea	32. Lightweight Pump Kit (Cache)	ea
4.	Meals, MRE's	cs	33. Hose, 1 1/2"	ea
5.	Water, 5 gal. cubie	ea	34. Hose, 1"	ea
6.	Batteries- AA	1-Flat	35. Hose, 3/4"	ea
7.	Batteries, Specify Type	pk	36. Reducer, 1 1/2" x 1"	ea
8.	Flagging, Specify type	roll	37. Reducer, 1" x 3/4"	ea
9.	Gas, raw	gal	38. Gated "Y", 1 1/2"	ea
10.	Bar Oil	gal	39. Gated "Y", 1"	ea
11.	2- cycle oil, chainsaw (2.5 oz)	6 pk	40. Gated "Y" 3/4 "	ea
12.	Sleeping Bags	ea	41. Shut-off Valve, "	ea
13.	Gatorade	cs	42. In-line Tee, 1 1/2" x 1"	ea
14.	Tarps / Plastic	roll	43. Nozzle, 1 1/2"	ea
15.	Parachute Cord	roll	44. Nozzle, 1"	ea
16.	Tool, Shovel	ea	45. Nozzle, 3/4"	ea
17.	Too I, Pulaski	ea	46. 20 Man First Aid Kit	ea
18.	Tool, Combi	ea	47. Chainsaw Kit	ea
19.	Tool, McLeod	ea	48. Toilet Paper (96 per case)	cs
20.	Tool, Specify Type	ea	49. 1000 ft. Hose Lay Kit	ea
21.	Fusee	cs	50. Garbage Bags	bx
22.	Drip Torch	ea	51. Leadline	ea
23.	Drip Torch Mix, 5 gal.	ea	52. Spike Supply Kit	ea
24.	Coffee Kit w/propane	ea	53. Dolmar (6 per case)	ea
25.	Swivel	ea	54. Sprinkler Kit	ea
26.	Backpack Pump	ea	55. LINE Spike Supply Kit	ea
27.	Pumpkin, specify size	ea	56. Duct Tape	roll
28.	Mark 3 Pump Kit w/fuel	ea	57. House Wrap	roll
29.	2-cycle oil, high pressure pump	qt	58. Staple Gun w/ staples	ea

Team Ordering/Timeline Process:

0630 - Morning Briefing, start of crew time.
 1100 - Last call to change spike camp resource hot food location.
 1600 - DIVS to have next day's resource order ready for Planning OPS.

- All crew level orders will be placed through DIVS or Branch.
- DIVS or Branch will place all orders through Communications Unit.
- All orders will be tracked using the process found on the front of this form.

GPS Datum: NAD 83- Degrees, Decimal, Minutes (DDMM.MM)

Definitions

FOB-Forward Operating Base is a secure forward position established to strategize, design and discuss tactics, and for personnel to transfer information and meet.

Line Spike Camp-Managed by Operations at the DIVS level; mobile, short duration and self- sufficient.

Spike Camp-Supported by Logistics, listed in the IAP, numbers in camp are set by 1100, named by Plans.

Emergency Medevac- Life threatening situation requiring immediate medical attention. Handled as per IAP med plan and team SOP's. Communications to clear command channel radio traffic.

Medical Transport-Transport of less serious injury/illness managed by Operations or line Medics back to camp for evaluation and/or treatment.

1000 ft. Hose Lay Kit (Order as "#49")

Spike Supply Kit (Order as "#52")

Quantity	NFES#	Item	Weight	Quantity	NFES#	Item	Weight
10 ea	1239	Hose 1½"	125 lbs	2 rolls	0071	Duct Tape	4 lbs
10 ea	1238	Hose 1"	84 lbs	4 rolls	0222	Fiber Tape	2lbs
20 ea	1016	Hose ¾"	25 lbs	1 case	0021	Trash Bags	21 lbs
5 ea	0231	1½" Gated "Y"	20 lbs	1 case	0465	Cups for hot liquid	18 lbs
5 ea	0259	1" Gated "Y"	13 lbs	2 ea	0070	16x24 Tent fly	40 lbs
10 ea	0904	¾" Gated "Y"	3 lbs	3 ea	0027	Water Wash Basins	2 lbs
5 ea	0010	Reducers 1½" - 1"	3 lbs	1 case		Liquid Hand Soap / pump	10 lbs
5 ea	0733	Reducers 1" - ¾"	2 lbs	18 cases	1842	MRE's	18 x 20= 360 lbs
10 ea	0738 or 0835	Ball Valve ¾"	5 lbs	48 ea	0022	Sleeping bags (dbl. bag)	48 x 5= 240 lbs
10 ea	0138	Nozzle, 1"	5 lbs	3 cases	0030	AA Batteries, 24 pkg./case	90 lbs
10 ea	0136	Nozzle ¾"	5 lbs	1 case	0240	Paper Towels	41 lbs
5 ea	0230	Tee 1½x1½x1"/valve	5 lbs	1 case	0142	Toilet Paper	44 lbs
LINE Spike Supply Kit (Order as "#55")				1 roll	0144	Plastic sheeting	45 lbs
				1 roll	0533	P-Cord	9 lbs
Quantity	NFES#	Item	Weight	20 ea	7443	Cubies, 5 gal. Full Potable Water	20 x 40= 800 lbs
20+0H	0022	Sleeping bags	20 x 5= 100 lbs	1 box	1059	12" Bastard Files	9lbs
20 ea	7443	Cubies, 5 gal Full	20x40= 800 lbs	1 ea	3444	2-cycle mix, chainsaw (6 pk 2.5 oz)	2lbs
18 cases	1842	MRE's	18x20=360 lbs	8 gal	1880	Bar Oil	64 lbs
1 sl	0533	P-Cord	9 lbs	15 gal		Regular Gas	120 lbs
3 cases	0030	AA Batteries, 24 pkg./case	90 lbs	1 can		3 lbs. can coffee	3 lbs
1 case	0021	Trash bags	21 lbs	1 ea		2 1/2 gal coffee pot or 3-1 gal	10 lbs
10 rolls	0142	Toilet paper	3 lbs	2ea	0089	Ridge pole	46 lbs
1 roll	0144	Plastic sheeting	45 lbs	12 ea	0083	Pole upright	89 lbs
2 rolls	0222	Fiber Tape	2 lbs	24 ea	0825	Stake Tent	24 lbs
1 ea	3444	2-cycle mix, chain-saw (6 pk 2.5 oz)	2 lbs				
4 gal	1880	Bar Oil	32 lbs				
15 gal		Regular Gas	120 lbs				
1 box	1059	12" Bastard Files	9 lbs				

Safety Message

INCIDENT NAME: Lick Creek/Green Ridge

OPERATIONAL PERIOD: 08/13/21 0600-0600

MAJOR HAZARDS:

- Snags/Hazard Trees
- Air Operations
- Driving
- Firing Operations
- Chainsaw Operations
- Fatigue
- Heavy Equipment Operations
- Gusty Winds/Spotting

NARRATIVE:

Managing for Cumulative Fatigue

The Green Ridge Fire has been going for 36+ days and many of you are on your second tour. Fire season isn't over yet. Will you still be physically able to do this through September, maybe October? Not if you don't manage fatigue. Consider the following points for fatigue management so that you are able to finish fire season in good shape:

- The first step toward becoming a good decision maker on the fire line is to recognize that fatigue hampers your ability to make appropriate decisions - fatigue affects everyone. Fatigue has an impact on risk taking.
- Studies that focus on how lack of sleep affects work performance during long shifts agree for people to perform well they should average one hour of sleep for every 2 hours of work.
- Fatigue prevention includes hydration and temperature control. It is recommended for a person to drink at least two gallons of water per shift.
- Breaks are a hedge against fatigue. For example, without frequent 10 to 30 second rest breaks between work operations, fatigue can rapidly overtake you. Breaks of 10 minutes or more keep performance from declining. The number and length of breaks should increase after 8 hours, because fatigue builds through-out a shift.
- Smoke and carbon monoxide are present on the typical wildfire. Some exposure is unavoidable. Your objective must be to limit exposure. Too much exposure causes headaches, fatigue, drowsiness, some impaired motor performance, decision making, and cognitive functions.
- Pace yourself on the job. Heat tolerance differs among personnel. If you push too hard to keep up with others, you may not last the shift.

SAFETY OFFICERS:

Pat Medina SOF2, Eric White SOF2 (t), Ryan Grant SOFR, Sean Lowry SOFR, Don Foco SOFR, Eric Adams SOFR (t), Robert Pelton SOF2

MEDICAL PLAN (ICS 206 WF)

Controlled Unclassified Information//Basic

1. Incident/Project Name		2. Operational Period					
Lick Creek/Green Ridge Fires		08/13/2021 (06:00) - 08/14/2021 (06:00)					
3. Ambulance Services							
Name	Location	Phone/Frequency	Advanced Life Support (ALS)				
			Yes	No			
Columbia County Fire District #3	111 Patit Road, Dayton, WA 99328	Dial 911		X			
Lewiston Fire Department	1245 Idaho Street, Lewiston, ID 83501	Dial 911	X				
4. Air Ambulance Services							
Name	Phone/Freq	Type of Aircraft & Capability					
Lifeflight - Lewiston	800-232-0911	Bell 407 – ALS, Night Vision					
Lifeflight - Walla Walla	800-232-0911	AW 119 – ALS, Night Vision					
Walla Walla	Contact Air Ops	AS-350B3 - Short Haul					
5. Hospitals							
Name Complete Address	GPS Datum – WGS 84 DD° Degrees Minutes Seconds		Travel Time		Phone	Helipad Yes No	Level of Care Facility
	Lat:	Long:	GND	AIR			
St. Mary Medical Center 401 West Poplar Street Walla Walla, WA 99362	46° 03' 40" N	118° 20' 31" W	1 hr*	20 min*	509-897-2500	X	Level 3
	VHF:						
	St. Joseph Regional Medical Cntr 415 6 th Street Lewiston, ID 83501	46° 25' 00" N	117° 01' 26" W	1 hr*	20 min*	208-799-5799	X
Sacred Heart Medical Center 101 W 8 th Avenue Spokane, WA 99204	47° 38' 56" N	117° 24' 46" W	2 hr*	30 min*	509-474-3342	X	Level 2 Trauma Center
	VHF:						
	Legacy Emanuel Medical Center 2801 North Gantenbein Avenue Portland, OR 97227	45° 32' 40" N	122° 40' 17" W	5 hr*	2.5 hr*	503-494-7333	X
VHF:							
*Travel times are from the Incident Command Post in Wooten Wildlife Area Headquarters and DO NOT include response time to the incident.							
6. Division Branch Group							
Div A	EMS Responders & Capability:		EMPF Waggoner/Forsythe				
	Equipment Available on Scene:		ALS, AED, Stokes Litter, SKED, UTV				
	Medical Emergency Channel:		TAC 2				
Div G/K	EMS Responders & Capability:		Ambulance 3, EMTF Holborn, EMTF Merrell, Rapid Access Team (RAT)				
	Equipment Available on Scene:		ALS, BLS, AED, Cardiac Monitor, Stokes Litter, SKED, UTV				
	Medical Emergency Channel:		TAC 4				
Div M	EMS Responders & Capability:		Ambulance 6, REMS 10, EMTF Jonassen				
	Equipment Available on Scene:		ALS, BLS, AED, Cardiac Monitor, Stokes Litter, SKED, UTV				
	Medical Emergency Channel:		TAC 1				
ICP	EMS Responders & Capability:		Ambulance 5				
	Equipment Available on Scene:		ALS, Cardiac Monitor				
	Medical Emergency Channel:		Command				
Nights	EMS Responders & Capability:		Ambulance 4				
	Equipment Available on Scene:		ALS, Cardiac Monitor				
	Medical Emergency Channel:		TAC 6				
	EMS Responders & Capability:						
	Equipment Available on Scene:						
	Medical Emergency Channel:						
	EMS Responders & Capability:						
	Equipment Available on Scene:						
	Medical Emergency Channel:						
7. Prepared By (Medical Unit Leader)		8. Date/Time		9. Reviewed By (Safety Officer)		10. Date/Time	
Stephanie McGovern, MEDL(t)		08-12-2021 (20:00)		Rob Pelton, SOF2		08-12-2021 (20:00)	

MEDICAL PLAN (ICS 206 WF)

Controlled Unclassified Information//Basic

Medical Incident Report

FOR A NON-EMERGENCY INCIDENT, WORK THROUGH CHAIN OF COMMAND TO REPORT AND TRANSPORT INJURED PERSONNEL AS NECESSARY.

FOR A MEDICAL EMERGENCY: IDENTIFY ON SCENE INCIDENT COMMANDER BY NAME AND POSITION AND ANNOUNCE "MEDICAL EMERGENCY" TO INITIATE RESPONSE FROM IMT COMMUNICATIONS/DISPATCH.

Use the following items to communicate situation to communications/dispatch.

1. CONTACT COMMUNICATIONS / DISPATCH (Verify correct frequency prior to starting report)

Ex: "Communications, Div. Alpha. Stand-by for Emergency Traffic."

2. INCIDENT STATUS: Provide incident summary (including number of patients) and command structure.

Ex: "Communications, I have a Red priority patient, unconscious, struck by a falling tree. Requesting air ambulance to Forest Road 1 at (Lat./Long.) This will be the Trout Meadow Medical, IC is TFLD Jones. EMT Smith is providing medical care."

Severity of Emergency / Transport Priority	<input type="checkbox"/> RED / PRIORITY 1 Life or limb threatening injury or illness. Evacuation need is IMMEDIATE <i>Ex: Unconscious, difficulty breathing, bleeding severely, 2° - 3° burns more than 4 palm sizes, heat stroke, disoriented.</i> <input type="checkbox"/> YELLOW / PRIORITY 2 Serious injury or illness. Evacuation may be DELAYED if necessary. <i>Ex: Significant trauma, unable to walk, 2° - 3° burns not more than 1-3 palm sizes.</i> <input type="checkbox"/> GREEN / PRIORITY 3 Minor injury or illness. Non-Emergency transport <i>Ex: Sprains, strains, minor heat-related illness.</i>	
Nature of Injury or Illness & Mechanism of Injury		Brief Summary of Injury or Illness <i>(Ex: Unconscious, Struck by Falling Tree)</i>
Transport Request		Air Ambulance / Short Haul/Hoist Ground Ambulance / Other
Patient Location		Descriptive Location & Lat. / Long. (WGS84)
Incident Name		Geographic Name + "Medical" <i>(Ex: Trout Meadow Medical)</i>
On-Scene Incident Commander		Name of on-scene IC of Incident within an Incident <i>(Ex: TFLD Jones)</i>
Patient Care		Name of Care Provider <i>(Ex: EMT Smith)</i>

3. INITIAL PATIENT ASSESSMENT: Complete this section for each patient as applicable (start with the most severe patient)

Patient Assessment: See IRPG page 106

Treatment:

4. TRANSPORT PLAN:

Evacuation Location (if different): (Descriptive Location (drop point, intersection, etc.) or Lat. / Long.) Patient's ETA to Evacuation Location:

Helispot / Extraction Site Size and Hazards:

5. ADDITIONAL RESOURCES / EQUIPMENT NEEDS:

Example: Paramedic/EMT, Crews, Immobilization Devices, AED, Oxygen, Trauma Bag, IV/Fluid(s), Splints, Rope rescue, Wheeled litter, HAZMAT, Extrinsic

6. COMMUNICATIONS: Identify State Air/Ground EMS Frequencies and Hospital Contacts as applicable

Function	Channel Name/Number	Receive (RX)	Tone/NAC *	Transmit (TX)	Tone/NAC *
COMMAND					
AIR-TO-GRND					
TACTICAL					

7. CONTINGENCY: Considerations: If primary options fail, what actions can be implemented in conjunction with primary evacuation method? Be thinking ahead.

8. ADDITIONAL INFORMATION: Updates/Changes, etc.

REMEMBER: Confirm ETA's of resources ordered. Act according to your level of training. Be Alert. Keep Calm. Think Clearly. Act Decisively.

