

Lick Creek – Green Ridge Fires

OR-UMF-000658 / OR-UMF-000659
P6N5AV (0614)

Send TIME to: 2021.greenridge.finance@firenet.gov

Saturday, August 14, 2021 – Sunday, August 15, 2021

Operational Period 0600-0600



Rocky Mountain IMT2 Black

Troy Hagan, ICT2 — Bill Waln, Deputy ICT2

Public Fire Information
2021.greenridge@firenet.gov

**Communications 24-Hour
Emergency Number:
971-727-7965**

IAP/Map/Demob/Check-in/Etc



<https://tinyurl.com/jtb3wzk6>

1. Incident Name:
Lick Creek / Green Ridge

2. Operational
Period:

Date From: 08.14.2021 Date To: 08.15.2021
Time From: 0600 Time To: 0600

3. Objective(s):

- Provide for the safety of firefighters and the public through the utilization of strategic and deliberate risk assessment processes. Ensure incident within an incident (IWI) protocols are established.
- Develop and implement tactics with the highest probability of success to protect identified values at risk.
- Maintain and enhance relationships, through timely communication, actively engaging the Agency Administrators, the public, and stakeholders.
- Coordinate with the READs to ensure natural and historical values are identified and protected.
- Assist with initial attack as requested, when it will not impede meeting of incident objectives.
- Manage the incident following established COVID-19 mitigation guidelines limiting spread of infectious diseases.

4. Operational Command Period Emphasis

Commitment to Resilience – Think ahead and ask “what if” questions. Always consider the worst-case scenario. Identify seemingly small errors and find solutions to unexpected problems. Maintain the capacity for dealing with new or changing circumstances.

5. Site Safety Plan Required? Yes No

Approved Site Safety Plans Located at: None Applicable

6. Incident Action Plan (the items checked below are included in this Incident Action Plan):

- | | |
|---|---|
| <input checked="" type="checkbox"/> ICS 203 | <input checked="" type="checkbox"/> Weather Forecast |
| <input checked="" type="checkbox"/> Fire Behavior | <input checked="" type="checkbox"/> ICS 204 |
| <input checked="" type="checkbox"/> ICS 205 | <input type="checkbox"/> ICS 205A (phone list) |
| <input checked="" type="checkbox"/> ICS 220 | <input checked="" type="checkbox"/> OTHER |
| <input checked="" type="checkbox"/> Maps/Charts | <input checked="" type="checkbox"/> ICS 214 |
| <input checked="" type="checkbox"/> ICS 206 | <input checked="" type="checkbox"/> ICS 208 Health & Safety |
| <input checked="" type="checkbox"/> 8 Line | |

Other Attachments:

- Finance Instructions
- Line Supply Order
- COVID Mitigation
- Demob Tips
- Separate map packet

7. Prepared by: Name: Rocco Snart

Position/Title: PSC2
Signature: Rocco Snart

8. Approved by Incident Commander:

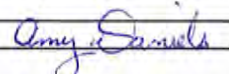
Name: Troy Hagan
Signature: Troy Hagan

ICS 202

IAP Page 2

Date/Time: Date: 08/13/2021 | 2000 hours

ORGANIZATION ASSIGNMENT LIST (ICS 203)

1. Incident Name: LICK CREEK/GREEN RIDGE		2. Operational Period: Date From: 8/14/2021		Date To: 8/15/2021	
		Time From: 0600		Time To: 0600	
3. Incident Commander(s) and Command Staff:			7. Operation Section:		
IC	Troy Hagan	Operations Chief	Shay Rogge, Brad Pietruszka (T)		
Deputy	Bill Waln	Planning Ops			
Safety Officer	Rob Pelton, Pat Medina, Eric White (T), Eric Adams (T)				
Medical	Kevin Ratzmann, Jeff Basamanowicz, Stephanie McGovern (T)		Branch I	Rodney Redinger, Jay Godson (T)	
Information Officer	Dawn Sanchez, Brant Porter, Olivia Bruce (T)	Division/Group	G/K	Nate Kerschner, Isaiah Jimenez (T)	
Liaison Officer	Sam Carle, Mark Neely, Bonnie Gibbons (T)	Division/Group	M	Brandon Bonenberger, Daniel Kamakani (T)	
4. Agency/Organization Representatives:		Division/Group	LICK	Jon Stonelake, Neal McCann (T)	
Agency/Organization	Name	Division/Group	NORTH	Nick Collard, Dave Collins (T)	
USFS AADM	Anthony Botello				
USFS AREP	Susan Piper		Branch II	Matt Norden, Deon Steinle (T)	
WA DNR	Wyatt Leighton, Tom Schoenfelder				
Asotin Co Fire Dist 1	Noel Hardin	Division/Group	A	Tom Kenny, Brad Bryant (T)	
Columbia Co Fire 3	Jeromy Phinney	Division/Group	P	Ian Barrett, Aaron Woodham (T)	
Garfield Co Fire Dist 1	James Cleveland				
WFS	Devin McCosh		NIGHT	Troy Mueller	
WDFW - LEO	Paul Mosman				
Covid Liaison	Cass Monroe, Steve Medina	Division/Group	NIGHT	Chris Rokosh, Jeff Corser (T)	
5. Planning Section:		8. Air Operations Branch			
Chief	Rocco Snart, Heather Gonzalez, Peter Barth	Air Operations Branch Director	Carolyn Blatz, Matt Lingenfelter (T)		
		Air Support Group Supervisor	Ken Ostrom		
Resource Unit	Kellie Stover, Amy Daniels, Rick Lancaster (T)	Air Tactical Group Supervisor	Tim Haas		
		Helibase Manager	Lee Steward		
Situation Unit	Tara Umphries, Kristen Marshall (T), Brenda Wasielewski (T)				
Demobilization Unit	Dave Farmer	9. Finance/Administration Section:			
Incident Meteorologist	Mary Wister	Chief	Mavis Biastoch, Patty Wyatt		
Status Check-In	Rose Long	Time Unit	Sonia Anderson, Kayla Clark		
Fire Behavior	Larry Long	Cost Unit	Kristie Bowen (T)		
Documentation Unit	Spencer Pollock (V)	Compensation Unit	Pearl Cowan		
GIS Specialist	Sarlyn McCormick, Jean Olson, Faith Dziedzic, Sarah Strehle (T)				
Strategic Planner					
Long Term Analyst	Kirk Will (T)				
Training Specialist	Amy Daniels, Heather Gonzalez (T)				
6. Logistics Section					
Chief	Wally Leander, Randy Spiering, Darin Gehring				
Ground Support Unit	Jamie Rietz				
Communications	Jim Midyett				
Facilities - ICP	Monty Bollock, Ken Hehr, David Brown				
Facilities - Rose Spike	Mike Kinne				
IT Specialist	Kevin Watts, Jason Reynolds (T)				
Supply Unit	Robin Brooks, Nate Haynes (T)				
Food Unit	Clyde Leggins				
Security	Darrell Hanson, Clyde Harris (T)				
Prepared By: Name: Amy Daniels Position/Title: RESL Signature: 					
ICS 203		Date/Time: 8/13/2021 2100 hours		NIMS IAP	



Lick Creek / Green Ridge Weather Forecast



FORECAST NO: 34
FORECAST FOR: Saturday Operational Period
SHIFT DATE: 8/14/2021
DATE AND TIME ISSUED: 8/13/2021 at 1900 PDT

NAME OF FIRE: Lick Creek/Green Ridge
UNIT: OR-UMF
SIGNED: *Mary Wister* - Incident Meteorologist
 mary.wister@noaa.gov

...A Change to More Unstable Conditions and Gusty Winds this Weekend...

WEATHER DISCUSSION: Smoke has helped to keep afternoon temperatures moderated down a few degrees, but the humidity—both day and nighttime--remains very low. Winds will be a little stronger today compared to yesterday and have a more westerly direction compared to the north-northwest winds experienced the past several days. A cold front will arrive to southeast Washington late Sunday and will be accompanied by increasing west-southwest winds. The atmosphere will be unstable with a slight possibility of an afternoon shower or thunderstorm late in the afternoon or evening.

TODAY:

WEATHER: Mostly sunny. Smoky.
MAXIMUM TEMPERATURE: 84-89° above 5000 feet. 95-99° valley bottoms.
MINIMUM RELATIVE HUMIDITY: 13-19% all elevations.
20-FOOT RIDGETOP WINDS: Southwest around 5 mph...becoming West-Northwest 8-12 mph with gusts to 17 mph after 1300.
GREEN RIDGE CREEKS: Upslope/Upcanyon 3-8 mph.
CHANCE OF WETTING RAIN (≥ 0.10"): 0%.
HAINES INDEX: 4 (Low).
INVERSION/STABILITY: Low level inversion lifts around 1100. Increasing instability.

TONIGHT:

WEATHER: Mostly clear. Smoky.
MINIMUM TEMPERATURE: 68-72° above 5000 feet. 55-60° valley bottoms.
MAXIMUM RELATIVE HUMIDITY: 22-27% above 5000 feet. 50-55% valley bottoms.
20-FOOT RIDGETOP WINDS: West-Northwest wind 8-12 mph with evening gusts to 17 mph.
GREEN RIDGE CREEKS: Downslope/Down canyon 2-5 mph.
CHANCE OF WETTING RAIN (≥ 0.10"): 0%
LIGHTNING ACTIVITY LEVEL: 1.
HAINES INDEX: 4 (Low)
INVERSION/STABILITY: Low and mid-level inversion developing.

SUNDAY:

WEATHER: Becoming partly cloudy. A slight chance of a late afternoon or evening shower or thunderstorm.
MAXIMUM TEMPERATURE: 82-87° above 5000 feet. 93-97° valley bottoms.
MINIMUM RELATIVE HUMIDITY: 20-25% above 5000 feet. 15-20% valley bottoms.
20-FOOT RIDGETOP WINDS: West-Southwest 8-12 mph with gusts to 20 mph in late afternoon and gusts 20-25 mph in the evening.
GREEN RIDGE CREEKS: Upslope/Upcanyon 3-8 mph.
CHANCE OF WETTING RAIN (≥ 0.10"): 10%. LIGHTNING ACTIVITY LEVEL (LAL): 1, possibly 2.
HAINES INDEX: 4 (Low).
INVERSION/STABILITY: Low level inversion lifts around 1000. Unstable in the afternoon.

FIRE BEHAVIOR FORECAST

FORECAST NUMBER: 19	TYPE OF FIRE: Wildfire
FIRE NAME: Lick Creek & Green Ridge Fires	OPERATIONAL PERIOD: 08-14-2021 24 Hour
DATE ISSUED: 08-13-2021	TIME ISSUED: 1900
UNIT: Umatilla NF OR-UMF-000658 & 000659	SIGNED: //s// Larry Long FBAN

INPUTS

****See the attached Incident Weather Forecast****

OUTPUTS FIRE BEHAVIOR

GENERAL: Wind speeds will increase slightly today resulting in higher rates of spread and higher fire intensity than what we've seen the last few days, especially in the late afternoon. Expect torching and spotting throughout the day and well into the night due to the low RH's and high temperatures.

Probability of ignition is 90% with spotting distances of 1000 feet possible. Haines Index 4

1-hour fuel moistures: 3%, 10 hours at 4%, 100 hours at 7%, 1000-hour fuels are ~8 % and live fuel moistures are at around 75-95%. ERCs are above the 90th percentile.

Fuel model	Max. Flame Length	Day Shift ROS	Night Shift ROS	Spotting
Timber little and understory TU5/TL4	8-9 ft.	15-27 ch/hr	11-20 ch/hr	.4 miles
Short Grass/Shrub – GR2	2-4 ft.	13-28 ch/hr	9-20 ch/hr	.4 miles

SPECIFIC:

Green Ridge: The fire will continue to progress up and out of the drainages, pushed by an upslope wind of 3-8 MPH and the west-northwest general winds. The fire will be active in the heavier concentrations of fuels as the winds surface causing torching and spotting. The active line in divisions A & P will continue to move along the drainages and ridges to the south and southeast. The Lick Creek fire has provided an effective barrier towards the east.

Lick Creek: The WNW winds today should again be favorable by pushing the heat and smoke into the interior. Expect interior fuels to continue to consume and put off smoke.

Night Division: Due to the late burning periods, anticipate daytime burning conditions to continue well into the late evening and continuing until the downslope winds set up and/or the humidity recovers.

AIR OPERATIONS:

Heavy smoke may hamper air operations.

SAFETY

Local Thresholds – WATCHOUT: Combinations of any of these factors can greatly increase fire behavior:

Elevations	20' Winds +15 mph	RH <20%	Temp +80°	1000hr Fuel <7%
3000 –5500'	WNW 8-12 mph G17	15-20%	95-99°	~8%

ASSIGNMENT LIST (ICS 204 WF)

CONTROLLED UNCLASSIFIED
INFORMATION//BASIC

1. Incident Name:	2. Operational Period:	3. Branch	Division
LICK CREEK/GREEN RIDGE	Date From: 08/14/21 Date To: 08/15/21 Time From: 0600 Time To: 0600	I	G/K

4. Operations Personnel:			
Operations Section Chief: Shay Rogge, Brad Pietruszka (T)	Planning Ops		
Branch Director: Rodney Redinger, Jay Godson (T)	Safety	Rob Pelton, Eric White (T)	
Division/Group Supervisor: Nate Kerschner, Isaiah Jimenez (T)	Air Attack:	Tim Haas	

5. Resources Assigned:							
Resource Identifier	ALS	LWD	Leader	Personnel	Request #	Hours	Reporting Location
TFLD Nilson		8/25	Nilson	1	O-523	0600-2200	Dayton Spike
TFLD(T) Livingston		8/26	Livingston	1	O-568	0600-2200	Dayton Spike
HC2 Mosqueda Ref GR		8/17	Equihua	20	C-45	0600-2200	Dayton Spike
ENG4 Hi Country GR		8/19	Burnette	3	E-127	0600-2200	Dayton Spike
ENG4 Ice Crescent		8/26	Freitag	3	E-285	0600-2200	Dayton Spike
ENG6 Terrance Titus		8/26	Lambrecht	2	E-255	0600-2200	Dayton Spike
WTT2 Christman Trucking GR		8/20	Blazek	1	E-2	0600-2200	Dayton Spike
WTT2 Overpeck GR		8/17	Melton	1	E-3	0600-2200	Dayton Spike
DOZ2 Alpine GR		8/17	Briggs	2	E-93	0600-2200	Dayton Spike
FEL1 Bruce Young GR		8/22	McCleran	2	E-79	0600-2200	Dayton Spike
MAST Tucannon Outfitters GR		8/21	Martin	1	E-107	0600-2200	Dayton Spike
GRD Britt		8/26	Nichols	2	E-266	0600-2200	Dayton Spike
SOFR Welsh		8/26	Welsh	1	O-565	0600-2200	Dayton Spike
SOFR(T) Lowry GR		8/16	Lowry	1	O-337	0600-2200	Dayton Spike
EMTF Holborn GR		8/17	Holborn	1	O-281	0600-2200	Dayton Spike
EMTF Merrell GR		8/18	Merrell	1	O-359	0600-2200	Dayton Spike

6. Work Assignments:
 Plumb handline from DP 40 to the 050 Road.
 Continue to improve contingency dozer line and handline from repeater to Patrick Grade Road.
 Continue to improve where needed on 46 Road north of Godman staging to DP-220 DIV M break.
 Patrol and mop up from DP-220 to Godman staging.

7. Special Instructions:
 Fireline Medics (E-59) located at DP-220.
 Adventure Medics (E-77) located at DP-240. Lead READ Will Marquardt: 530-402-6202
 RAT1 (E-138) located on Skyline Drive.
 Operations will identify closest resources while DIVS identifies specific resources to respond to IA within TFR.
 Please ensure 3/32" fish screens are used at all draft sites in Punjab Creek, Touchet, and Tucannon Rivers.

8. Communications

Name	Ch	Function	Rx Freq	Rx Tone	Tx Freq	Tx Tone	Notes
SEE ICS 205 COMM PLAN							

9. Prepared by: Name: Kellie Stover, Amy Daniels, Rick Lancaster(T) RESL Signature:

ICS 204 Date/Time: 8/13/2021 2200 Personnel Count: 43

ASSIGNMENT LIST (ICS 204 WF)

CONTROLLED UNCLASSIFIED
INFORMATION//BASIC

1. Incident Name:	2. Operational Period:	3. Branch	Division
LICK CREEK/GREEN RIDGE	Date From: 08/14/21 Date To: 08/15/21 Time From: 0600 Time To: 0600	I	M

4. Operations Personnel:	
Operations Section Chief: Shay Rogge, Brad Pietruszka (T)	Planning Ops
Branch Director: Rodney Redinger, Jay Godson (T)	Safety: Rob Pelton, Eric White (T)
Division/Group Supervisor: Brandon Bonenberger, Daniel Kamakani (T)	Air Attack: Tim Haas

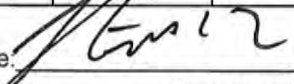
5. Resources Assigned:							
Resource Identifier	ALS	LWD	Leader	Personnel	Request #	Hours	Reporting Location
TFLD(T) Bowen		8/20	Bowen	1	O-463	0600-2200	Rose Spike
TFLD(T) Dary		8/21	Dary	1	O-460	0600-2200	Rose Spike
HC2IA UMF Crew 3		8/21	Wagner	20	C-104	0600-2200	Rose Spike
HC2IA Vet Crew		8/20	Leggett	18	C-105	0600-2200	Rose Spike
HC2 Blue Mountain GR		8/17	Perez	20	C-43	0600-2200	Rose Spike
ENG4 Chewack LC		8/17	Stark	3	E-85	0600-2200	Wooten Camp
WTS2 Panther DG		8/18	Davis	1	E-45	0600-2200	Wooten Camp
WTS2 Lovato GR		8/14	Lovato	1	E-135	0600-2200	Wooten Camp
WTS2 Rahi GR		8/19	Rahi	1	E-136	0600-2200	Wooten Camp
WTS2 Alder Creek Fire GR		8/14	Beaman	1	E-169	0600-2200	Wooten Camp
WTS2 Able 2 GR		8/14	Smith	1	E-174	0600-2200	Wooten Camp
WTS3 JTS 2 GR		8/31	Elam	1	E-172	0600-2200	Wooten Camp
FMOD Mill Creek GR		8/20	Johnson	2	O-442	0600-2200	Wooten Camp
SOF2 Roberts		8/17	Roberts	1	O-567	0600-2200	Wooten Camp
SOFR Foco GR		8/18	Foco	1	O-368	0600-2200	Wooten Camp
EMPF Clark		8/27	Clark	1	O-529	0600-2200	Wooten Camp
EMTF Jonassen GR		8/16	Jonassen	1	O-196	0600-2200	Wooten Camp

6. Work Assignments:
 Hold and mop-up from 40 Road to the DIV K/M break.
 Burnout islands as needed.
 Coordinate with adjacent Divisions for additional holding resources.
 Improve handlines where possible.
 Secure spot fires north of DIV K/M containment lines.

7. Special Instructions:
 REMS 10 (E-185) located at DP-17. Lead READ Will Marquardt: 530-402-6202
 Wilderness Medics (E-39) located at DP-17.
 DIVS to identify equipment to be sent in an event of an IA within TFR. Operations will identify closest resources to respond to new incident.
 Please ensure 3/32" fish screens are used at all draft sites in Punjab Creek, Touchet, and Tucannon Rivers.

8. Communications

Name	Ch	Function	Rx Freq	Rx Tone	Tx Freq	Tx Tone	Notes
SEE ICS 205 COMM PLAN							

9. Prepared by: Name: Kellie Stover, Amy Daniels, Rick Lancaster(T) RESL Signature: 

ICS 204 Date/Time: 8/13/2021 2200 Personnel Count: 75

ASSIGNMENT LIST (ICS 204 WF)

CONTROLLED UNCLASSIFIED
INFORMATION//BASIC

1. Incident Name:	2. Operational Period:	3. Branch	Division
LICK CREEK/GREEN RIDGE	Date From: 08/14/21 Date To: 08/15/21 Time From: 0600 Time To: 0600	I	LICK

4. Operations Personnel:			
Operations Section Chief: Shay Rogge, Brad Pietruszka (T)	Planning Ops		
Branch Director: Rodney Redinger, Jay Godson (T)	Safety: Rob Pelton, Eric White (T)		
Division/Group Supervisor: Jon Stonelake, Neal McCann (T)	Air Attack: Tim Haas		

5. Resources Assigned:							
Resource Identifier	ALS	LWD	Leader	Personnel	Request #	Hours	Reporting Location
TFLD(T) Walters GR		8/16	Walters	1	O-329	0600-2200	Wooten Camp
HC1 Silver City IHC GR		8/20	Romero	21	C-96	0600-2200	Rose Spike
HC1 Prescott IHC		8/26	Fisher	20	C-100	0600-2200	Rose Spike
SMOD Williams 7-1		8/25	Sweeney	10	O-520	0600-2200	Rose Spike
STEN Cwiak GR		8/14	Cwiak	1	O-300	0600-2200	Wooten Camp
ENG3 B-5232		8/26	Fry	4	E-256	0600-2200	Rose Spike
ENG3 Smokey Bear		8/22	Quirarte	6	E-257	0600-2200	Rose Spike
ENG6 Earth Industries		8/25	Voss	3	E-246	0600-2200	Wooten Camp
WTS2 Ash Kickers DG		8/23	Waldron	1	E-15	0600-2200	Wooten Camp
WTS2 Minam River DG		8/26	Henderson	1	E-40	0600-2200	Wooten Camp
WTS2 Huffman GR		8/28	Huffman	1	E-167	0600-2200	Wooten Camp
WTS2 Martin GR		8/15	Martin	1	E-173	0600-2200	Wooten Camp
WTS2 McDonald		8/24	McDonald	1	E-247	0600-2200	Wooten Camp
WTS3 JTS 1 GR		8/31	Elmer	1	E-170	0600-2200	Wooten Camp
DOZ2 Overpeck GR		8/18	Overpeck	2	E-4	0600-2200	Rose Spike
DOZ3 Traverse GR		8/25	Wilcox	2	E-177	0600-2200	Rose Spike
FMOD A&E Tree GR		8/19	Wilke	2	O-118	0600-2200	Wooten Camp

6. Work Assignments:
 Patrol and mop up as needed to secure fire's edge along the Lick/M division break.
 Periodic patrols of the southern portion of the Lick Fire. Continue to assist Division M with water support as needed.
 Assess and implement structure protection in the Stentz Summer Group Home Development.
 Look for and suppress spot fires where safe to do so.

7. Special Instructions:
 Operations will identify closest resources while DIVS identifies specific resources to respond to IA within TFR.
 Please make sure 3/32" fish screens are used at all draft sites in Punjab Creek, Touchet, and Tucannon Rivers.
 Operational briefing to be broadcasted at Wooten Camp at 0630. See IAP for details. Lead READ Will Marquardt: 530-402-6202

Name	Ch	Function	Rx Freq	Rx Tone	Tx Freq	Tx Tone	Notes
SEE ICS 205 COMM PLAN							

9. Prepared by: Name:	Kellie Stover, Amy Daniels, Rick Lancaster(T)	RESL	Signature:
ICS 204	Date/Time: 8/13/2021	2200	Personnel Count: 78

ASSIGNMENT LIST (ICS 204 WF)

CONTROLLED UNCLASSIFIED
INFORMATION//BASIC

1. Incident Name:	2. Operational Period:	3. Branch	Division
LICK CREEK/GREEN RIDGE	Date From: 08/14/21 Date To: 08/15/21 Time From: 0600 Time To: 0600	I	NORTH

4. Operations Personnel:			
Operations Section Chief: Shay Rogge, Brad Pietruszka (T)	Planning Ops		
Branch Director: Rodney Redinger, Jay Godson (T)	Safety: Rob Pelton, Eric White (T)		
Division/Group Supervisor: Nick Collard, Dave Collins (T)	Air Attack: Tim Haas		

5. Resources Assigned:							
Resource Identifier	ALS	LWD	Leader	Personnel	Request #	Hours	Reporting Location
TFLD Mondragon		8/22	Mondragon	1	O-421	0600-2200	Rose Spike
WTS2 MVP Team DG		8/16	Konrad	1	E-48	0600-2200	Rose Spike
WTS2 Green Mountain GR		8/17	Stevens	1	E-168	0600-2200	Rose Spike
WTS2 Hek Jones GR		8/14	Long	1	E-171	0600-2200	Rose Spike
FMOD Swedberg		8/22	Wadley	2	O-439	0600-2200	Rose Spike
FMOD Woodworth GR		8/20	Woodworth	2	O-441	0600-2200	Rose Spike
HEQB Beehler		8/23	Beehler	1	O-501	0600-2200	Rose Spike
HEQB(T) Chris Carney		8/21	Carney	1	O-458	0600-2200	Rose Spike
DOZ3 Bruce Young GR		8/26	Miltonberger	2	E-85	0600-2200	Rose Spike
DOZ3 Kiser & Kiser 1 GR		8/28	Kiser	1	E-178	0600-2200	Rose Spike
DOZ3 Kiser & Kiser 2 GR		8/15	Mackay	1	E-179	0600-2200	Rose Spike
FEL2 Wyeast GR		8/14	Sandoz	2	E-102	0600-2200	Rose Spike
MAST Bruce Young GR		8/26	Gentry	2	E-69	0600-2200	Rose Spike
MAST Eagle CAP GR		8/28	Pierce	2	E-70	0600-2200	Rose Spike
GRD Alvord GR		8/23	Davis	2	E-132	0600-2200	Rose Spike
CHIP JML		8/23	Jasiel	3	E-241	0600-2200	Rose Spike
SOFR Foco GR		8/18	Foco	1	O-368	0600-2200	Rose Spike

6. Work Assignments:
 Construct contingency line on the 4016 Road from the 40 Road to the Lick Fire.
 Coordinate contingency line construction with READs.
 Communicate with Division Supervisors for holding resources as needed.

7. Special Instructions:
 Expect delays on 4016 Road due to heavy equipment operations. If you need to travel it, time your travel prior to 0800, between 1300-1400, or after 1800.
 Command 11 repeater is operational. Lead READ Will Marquardt: 530-402-6202
 DIVS to identify equipment to be sent in an event of an IA within TFR. Operations will identify closest resources to respond to new incident.
 Please make sure 3/32" fish screens are used at all draft sites in Punjab Creek, Touchet, and Tucannon Rivers.

8. Communications							
Name	Ch	Function	Rx Freq	Rx Tone	Tx Freq	Tx Tone	Notes
SEE ICS 205 COMM PLAN							

9. Prepared by: Name:	Kellie Stover, Amy Daniels, Rick Lancaster(T)	RESL	Signature:	Personnel Count: 26
ICS 204	Date/Time: 8/13/2021 2200			

ASSIGNMENT LIST (ICS 204 WF)

CONTROLLED UNCLASSIFIED
INFORMATION//BASIC

1. Incident Name:	2. Operational Period:	3. Branch	Division
LICK CREEK/GREEN RIDGE	Date From: 08/14/21 Date To: 08/15/21 Time From: 0600 Time To: 0600		NIGHT

4. Operations Personnel:	
Operations Section Chief: Shay Rogge, Brad Pietruszka (T)	Planning Ops
Branch Director: Troy Mueller	Safety: Rob Pelton, Eric White (T)
Division/Group Supervisor: Chris Rokosh, Jeff Corser (T)	Air Attack: Tim Haas

5. Resources Assigned:							
Resource Identifier	ALS	LWD	Leader	Personnel	Request #	Hours	Reporting Location
ENG4 Inbound E18 GR		8/21	Navarro	3	E-161	1800-1200	Rose Spike
ENG5 Methow River GR		8/14	Hernandez	3	E-159	1800-1200	Rose Spike
ENG6 Osprey Wildfire GR		8/23	Roe	3	E-149	1800-1200	Rose Spike
ENG6 Wilson Farm		8/26	Wilson	3	E-274	1800-1200	Rose Spike
ENG6 Thunderbolt Fire		8/26	Hall	3	E-286	1800-1200	Rose Spike
ENG4 A1 Firestorm		8/26	Petersen	3	E-287	1800-1200	Rose Spike
WTS2 Dahl-Bredine GR		8/27	Dahl-Bredine	1	E-133	1800-1200	Rose Spike
WTS2 Black Range GR		8/28	Crockett	1	E-134	1800-1200	Rose Spike
SOF2 Medina		8/20	Medina	1	O-363.9	1800-1200	Rose Spike
SOFR(T) Eric Adams		8/21	Adams	1	O-456	1800-1200	Rose Spike

6. Work Assignments:
 Patrol and improve line where needed.
 Transfer operational needs to Day Operations.
 Take action as needed to ensure that existing structures and infrastructures do not sustain further damage.

7. Special Instructions:
 Frontline Medical (E-61) located at DP-17. Lead READ Will Marquardt: 530-402-6202
 DIVS to identify equipment to be sent in an event of an IA within TFR. Operations will identify closest resources to respond to new incident.
 Please make sure 3/32" fish screens are used at all draft sites in Punjab Creek, Touchet, and Tucannon Rivers.

Name	Ch	Function	Rx Freq	Rx Tone	Tx Freq	Tx Tone	Notes
SEE ICS 205 COMM PLAN							

9. Prepared by: Name:	Kellie Stover, Amy Daniels, Rick Lancaster(T)	RESL	Signature:	Personnel Count: 22
ICS 204	Date/Time: 8/13/2021	2200		

AIR OPERATIONS SUMMARY 220		Prepared By: Matt Lingenfelter	Prepared: 08/13/2020	Prepared Time: 1900
1. INCIDENT NAME: Green Ridge	2. OPERATIONAL PERIOD 8/14/2021	START TIME: 0730	END TIME: 2130	SUNRISE: 0546
				SUNSET: 2004

3. REMARKS (Safety Notes, Hazards, Air Operations Special Equipment, etc.):

AVIATION SAFETY IS A TEAM EFFORT!

AIR OPERATIONS INTENT

ALL MISSIONS WILL BE ANALYZED IN TERMS OF HAZARDS AND RISKS

- THE RISK ASSESSMENT IS AN OPEN PROCESS WELCOMING INPUT.
- HAZARDS WILL BE MITIGATED; RISK WILL BE REDUCED.
- RISK MANAGEMENT PROCESS WILL BE DOCUMENTED AND DISPLAYED.

IF A MISSION FEELS UNSAFE, IDENTIFY SAFE ALTERNATIVES!

****High winds have been a safety issue. ***HEADS UP!!!****

4. READY ALERT AIRCRAFT:

IA: TBD
 Medivac: 3JR @ KALW
 Life Flight @ Walla Walla
 3JR Short Haul @ KALW

Order through Communications
 See Medical Plan in the IAP

5. TFR: 1/4930
 24 Hours
 12,000 MSL
 31 NM WNW of
 Walla Walla
 POC Frequency 119.5250

6. PERSONNEL NAME	PHONE #	7. FREQUENCIES	AM	FM	8A. FIXED-WING Ordering
AOBD Carolyn Blatz	720-693-3194	A/A (TFR)	119.5250		AIRTANKERS/LEAD PLANES: ATGS order through Dispatch
AOBD (T) Matt Lingenfelter	805-705-8621 970-294-2213	A/A (Secondary)	123.7000		8B. Aerial Supervision / Personnel / Location
ASGS Ken Ostrom	307-272-3266	A/G (BR 1 Primary)		169.2000	AIR ATTACK Platforms: Order through Operations ATGS N400DS (Tim Haas) Lewiston, Idaho
DECK Billy Trfon	907-294-4121	A/G (BR 2 Logistics)		167.0750	
MRB Anthony Page	318-446-0628	A/G (BR 2 Primary)		168.2750	
ATGS Tim Haas		V MED 28		155.3400	
HEBM Lee Steward	775-220-6364	A/G (BR 2 Secondary)		168.5250	
Blue Mountain Interagency Dispatch	541-963-7171	AIRGUARD		168.6250 TX 110.9	Tucannon Mobile Retardant Base Anthony Page 318-446-0629

9. HELICOPTERS

FAA N#	TY	MAKE/ MODEL	BASE	START	AVAIL	REMARKS	FAA N#	TY	MAKE/ MODEL	BASE	START	AVAIL	REMARKS
359EV	3	AS 350 B3	ALW	0730	0800	EU, Initial Attack, Bucket, Recon	187CK	1	BV CH-46	ALW	0730	0800	CWN Bucket
353JR	3	AS 350 B3	ALW	0730	0800	EU, Initial Attack, Bucket, Recon, Cargo, Short Haul	612CK	1	SH-3H	ALW	0730	0800	CWN Bucket
516LE	3	Bell 206L	ALW	0730	0800	CWN, Initial Attack, Bucket, Recon, Cargo	604CK	1	UH-60	ALW	0730	0800	CWN Bucket



10. TASK/ MISSION/ ASSIGNMENT (Type/ function includes: Air Tactical, Retardant, Recon, Personnel Transport, Bucket Operations, SAR, etc.)				
TYPE/FUNCTION	PRIORITY	NAME OF PERSONNEL OR CARGO (if applicable) or instructions for tactical aircraft	FLY FROM	FLY TO
ATGS		Provide coverage as smoke or weather permits.	Lewiston, Idaho	Fire
Initial Attack		Support Initial Attack actions as requested.	TBD	IA
Medevac		** See Medical Plan in IAP – Review during Division Breakouts**	TBD	Fire
Water Drops		As needed and approved by OPS	Helibase	Fire
PSD/UAS Operations		As approved in the PSD/UAS plan, where and when needed, determined by Ops.	TBD	Fire
Recon		Fire reconnaissance by Ops. Priority	TBD	Fire

Green Ridge Lick Creek Fire Costs:	
Send All Aviation Costs to: 2021.greenridge.finance@firenet.gov	
lickcreekhelibase@gmail.com & matt.lingenfelter@usda.gov	

Flights above ground level	Wind Restrictions		
	Type 1 Helicopters	Type 2 Helicopters	Type 3 Helicopters
More than 500' AGL	<50kts / Gusts: N/A	<50kts / Gusts: N/A	<50kts / Gusts: N/A
Less than 500' AGL	<40kts / Max Gust Spread: 15kts	<40 kts / Max Gust Spread: 15kts	<30kts / Max Gust Spread: 15kts

Controlled Unclassified Information/Basic

Approved by: //s//: Matt Lingenfelter AOB(t)

CUI

INCIDENT RADIO COMMUNICATIONS PLAN I-205				1. INCIDENT NAME GREEN RIDGE		2. DATE/TIME PREPARED 0813/21		3. OPERATIONAL PERIOD DATE/TIME 08/14/21 0600 TO 08/15/21 0600	
4. BASIC RADIO CHANNEL UTILIZATION									
Ch #	Channel Name	Assignment	RX Frequency	RX Tone/NAC	TX Frequency	TX Tone/NAC	Mode Digital (D) Analog (A) Mixed (M)	Remarks	
1	TAC 1	DIV M / DIV P	168.0500	151.4	168.0500	151.4	A		
2	TAC 2	DIV A / DIV NIGHT	168.6000	151.4	168.6000	151.4	A		
3	TAC 3	NORTH CONTING	166.7250	151.4	166.7250	151.4	A		
4	TAC 4	DIV G / DIV K	166.7750	151.4	166.7750	151.4	A		
5	TAC 5	LICK	168.2500	151.4	168.2500	151.4	A		
6	CMD 3	CMD 3	170.0250	131.8	165.4500	131.8	A		
7	CMD 7	CMD 7	170.0000	151.4	166.6750	151.4	A		
8	CMD 8	CMD 8	170.6875	151.4	166.5750	151.4	A		
9	CMD 9	CMD 9	170.4250	151.4	168.0750	151.4	A		
10	CMD 10	CMD 10	172.0250	151.4	162.1750	151.4	A		
11	CMD 67	CMD 67	172.0750	151.4	162.2000	151.4	A	ABOVE ROSE SPIKE	
12	CMD 12	CMD 12	170.4125	131.8	165.9625	131.8	A	FORMERLY CMD 11 ON LICK	
13	A/G PRI		168.2750		168.2750		A	A/G PRIMARY	
14	A/G SEC		168.5250		168.5250		A	A/G SECONDARY	
15	VMED 28		155.3400		155.3400		A	AIR MEDICAL	
16	AIRGUARD	EMERGENCY USE ONLY!	168.6250		168.6250	110.9	A	EMERGENCY USE ONLY!	
ICS-205 Prepared By:		JIM MIDYETT		CLONE VERSION: 081421		ALWAYS POST A HUMAN REPEATER TO RELAY MESSAGES OUT OF AREAS WHERE YOU DONT HAVE ADEQUATE COMMUNICATIONS			
				DPH: PRESS & HOLD # KEY TO CHECK VERSION.					
				KNG: LOOK AT ZONE LABEL					

CUI

INCIDENT RADIO COMMUNICATIONS PLAN I-205		1. INCIDENT NAME		2. DATE/TIME PREPARED		3. OPERATIONAL PERIOD DATE/TIME					
Lick Creek Fire		Lick Creek Fire		8/13/2021		08/14/21 0600 to 08/15/21 0600					
4. BASIC RADIO CHANNEL UTILIZATION											
Ch #	Function	Channel Name	Assignment	RX Freq	NW	RX Tone/NAC	TX Freq	NW	TX Tone/NAC	Mode Analog (A) Digital (D) Mixed (M)	Remarks
1	COMMAND	CMD 1	OUT OF SERVICE		N			N		A	Removed from Service. unavailable for use.
2	COMMAND	CMD 2	COMMAND	170.4125	N	131.8	165.9625	N	131.8	A	OUT OF SERVICE
3	COMMAND	CMD 3	COMMAND	170.0250	N	131.8	165.4500	N	131.8	A	CLEARWATER LOOKOUT Linked to Green Ridge
4	COMMAND	CMD 4	OUT OF SERVICE		N			N		A	
5	TACTICAL	TAC 5	LICK BRANCH	168.0500	N	131.8	168.0500	N	131.8	A	
6	TACTICAL	TAC 6	UNASSIGNED	168.6000	N	131.8	168.6000	N	131.8	A	
7	TACTICAL	TAC 7	LICK/GREEN RIDGE	166.7250	N	131.8	166.7250	N	131.8	A	
8	TACTICAL	TAC 8	UNASSIGNED	166.7750	N	131.8	166.7750	N	131.8	A	
9	TACTICAL	TAC 9	UNASSIGNED	168.2500	N	131.8	168.2500	N	131.8	A	
10	TACTICAL	TAC 10	UNASSIGNED	168.2000	N	131.8	168.2000	N	131.8	A	
11	COMMAND	CMD 11	COMMAND	172.5500	N	131.8	169.4500	N	131.8	A	Located near DP 57
12	COMMAND	COTTWD	LOCAL RPTR	173.7750	N	131.8	164.8250	N	127.3	A	Located 18 M SE of Pomeroy
13	AIR TO GROUND	VMED28	MED A/G	155.3400	N		155.3400	N		A	Use with Air Ambulance
14	AIR TO GROUND	A/G PRI	A/G	168.2000	N		169.2000	N		A	
15											
16	AIRGUARD	AIRGUARD	AIR GUARD	168.6250	N		168.6250	N	110.9	A	Emergency Aircraft Contact
5. Special Instructions:											
6. I-205 Prepared By: Communications Unit Leader				Name: JIM MIDYETT				Signature: JIM MIDYETT			

INCIDENT RADIO COMMUNICATIONS PLAN I-205		1. INCIDENT NAME		2. DATE/TIME PREPARED		3. OPERATIONAL PERIOD DATE/TIME					
		IA		8/8/2021		08/14/21 0600 TO 08/15/21 0600					
4. BASIC RADIO CHANNEL UTILIZATION											
Ch #	Function	Channel Name	Assignment	RX Freq	NW	RX Tone/NAC	TX Freq	NW	TX Tone/NAC	Mode Analog (A) Digital (D) Mixed (M)	Remarks
1	COMMAND	ST ASOTIN	LOCAL RPTR	159.4200	N	D365	151.2950	N	D365	A	6 Miles W of Anatone
2	COMMAND	COTTNWD	LOCAL RPTR	173.7750	N	131.8	164.8250	N	127.3	A	18 Miles SE of Pomeroy
3	COMMAND	SADDLE	LOCAL RPTR	173.7750	N	131.8	164.8250	N	146.2	A	29 Miles SE of Pomeroy
4	COMMAND	OREGON	LOCAL RPTR	173.7750	N	131.8	164.8250	N	167.9	A	25 Miles S of Pomeroy
5	COMMAND	DIAMOND	LOCAL RPTR	173.7750	N	131.8	164.8250	N	151.4	A	
6	TACTICAL	COM	DNR TACTICAL	151.4150	N	103.5	151.4150	N	103.5	A	
7	TACTICAL	TAC 1	DNR TACTICAL	151.3100	N	103.5	151.3100	N	103.5	A	
8	TACTICAL	TAC 2	DNR TACTICAL	151.3400	N	103.5	151.3400	N	103.5	A	
9	TACTICAL	TAC 3	DNR TACTICAL	151.3500	N	103.5	151.3500	N	103.5	A	
10	TACTICAL	REDNET	TACTICAL	153.8300	N		153.8300	N		A	
11	TACTICAL	UMF-TAC	TACTICAL	168.2375	N	131.8		N	131.8	A	
12	AIR TO GROUND	A/G 1	LOCAL A/G	159.2700	N	103.5	159.2700	N	103.5	A	
13	AIR TO GROUND	A/G 9	LOCAL A/G	166.9125	N		166.9125	N		A	
14	AIR TO GROUND	A/G 44	LOCAL A/G	167.6250	N		167.6250	N		A	
15	AIR TO GROUND	VMED28	MEDICAL A/G	155.3400	N		155.3400	N		A	
16	AIRGUARD	AIR GUARD	AIR GUARD	168.6250	N		168.6250	N	110.9	A	Emergency Aircraft Contact
5. Special Instructions:											
6. I-205 Prepared By: Communications Unit Leader						Name: JIM MIDYETT			Signature: JIM MIDYETT		



Human Resource Message



Lick Creek and Green Ridge Fires - August 14, 2021

Give yourself grace:

Many of us have been out on fire assignments for a long time, and this is only the second week of August which is kind of an indication of how long this fire season will last. We are all getting tired and perhaps making more mistakes or forgetting things we normally do not.

We can attribute some of the forgetfulness to fatigue and some to stress. We all forget things from time to time, like when we walk into a room and forget why we went into the room, or when we play the fun game with ourselves and hide our own keys. Give yourself grace when that happens. We all do it and we usually find the keys...eventually.

We all make mistakes too, and we learn from those mistakes...better known as experience. We usually don't make the same mistake twice. We have a lot of "experienced" people working here and that "experience" is appreciated.

So, what we are saying here is don't be too hard on yourself. There are plenty of people willing to do that for you. Be proud of everything you do. Even mistakes mean you are trying. Per author Cheryl Strayed, "Trust your gut, forgive yourself, be grateful." We are all here together so be respectful and help each other out. Give others grace too.



Quote for the day: "Good judgment comes from experience, and experience comes from bad judgement." - *Rita Mae Brown*

Take care today, stay cool, rest, hydrate, and have a safe day!



TEAM BLACK FINANCE PROCEDURES

****Green Ridge, Lick Creek, and Dry Gulch Fires****

We are using a 100% electronic time submission process. Please submit time daily.
PLEASE REPORT TIME BASED ON THE FIRE YOU WORKED ON.

Resources just checking in: After checking in using the QR Code on the front of an IAP, please continue to the Finance portion and complete the Finance Check-In Form. Don't forget to submit the appropriate forms/documents electronically.

E-mail time to: 2021.greenridge.finance@firenet.gov

Please include resource type (**OVERHEAD, EQUIPMENT OR CREW**) in subject line. Please send electronic documents OR pictures.

If you are sending other information or questions to the finance email, please send separate email with appropriate subject line, ie: "Question on time" or "Explanation of travel."



To electronically demob from finance: Submit final CTRs and Shift Tickets to the above finance email. Include your email address and phone number. Make sure CTRs/Shift Tickets are complete and legible. **Once you have turned in your final CTRs/Shift Tickets you are released from Finance.** A final timesheet (OF288) and/or Invoice (OF286) will be emailed to you for review. Please respond with a confirmation email of accuracy. If there are errors or edits needed, contact-46 finance asap by replying to the email.

Travel safely home without having to deal with finance in person!

If you are unable to send electronic CTRs/Shift Tickets due to lack of connectivity, or incompatible devices, hard copies will be accepted. Coordinate with your supervisor for delivery to Finance. BE SURE TO INCLUDE PHONE NUMBER AND EMAIL ADDRESS. When you are ready to demob, call one of the Finance numbers below.

If you have any questions, please contact us at:

Finance 971-245-0248 or 971-727-7461; Comp/Claims 541-969-2396

Demob Tips

*****Note: If you have cell phone coverage and have nothing to return to Communications or Supply, you will not physically need to come to demob.*****

AIR TRAVELERS please contact or stop by demob 4 days prior to your demob date to confirm travel plans.

After being notified by your supervisor of your tentative release date:

1. Return all supplies, radios, etc. that were checked out. If you have no items to return, you can complete finance and demob virtually. All line vehicles must complete a WEED WASH and have a post-inspection of their vehicles.
2. Submit time for all personnel and equipment to Finance per directions in IAP.
3. Once you receive confirmation from FINANCE with a copy of your OF-288 and other financial documentation, you are free to complete Step 4 and travel home.
4. Complete demob Checkout Sheet using QR code on the cover of the IAP. If unable to use, see demob. Once demob receives confirmation from Finance and your demob checkout sheet has been electronically submitted, you will be released in the system.

Demob Unit email: 2021.greenridge.demob@firenet.gov (970) 217-6479

Training Specialist Message/Training Process

You do not have to wait until the last work day to complete a position task book (PTB) evaluation. You can complete the evaluation process at any time on the incident. Trainees are not required to check in with the Incident Training Specialist (TNSP). However, Geographic Area Priority Trainee Program participants are strongly encouraged to check in with the TNSP. The TNSP is available to answer questions and/or help guide both the Trainee and Evaluator through the process.

1. Incident trainees should check in early with the TNSP either in person or remotely using the QR code on the IAP cover. Within that QR code exists a training portal.
2. The trainee needs to take ownership of their training assignment. Working closely with their evaluator, identify tasks and learning opportunities that can be documented in their PTB.
3. Ensure all the information is complete and correct on the Evaluation Record and, if being recommended for certification, the PTB Verification/Certification form. Incorrect or incomplete information is a very common issue in PTBs and, all too often, delays certification of a trainee as fully qualified. Please review all information to make sure it is complete, accurate, and legible.
4. The evaluator should complete an Incident Personnel Performance Rating (ICS 225 WF) for the trainee, and submit a copy to the TNSP either in person or a picture copy.
5. Once all the documentation is completed, the trainee will need to close out with the TNSP. The trainee can: 1) stop by and close out in person with TNSP; 2) call the TNSP to go through the Exit Interview Form and discuss how the assignment went; or 3) complete the Exit Interview Form through the QR code link.

Incident Training Specialist email: 2021.greenridge.plans@firenet.gov

TENTATIVE RELEASE DATES & TIMES

08/14/2021

EQUIPMENT

E-73	0700	(WTS2) R & K WATER SERVICE
E-150	0600	(ENG4) ENGINE - T4 - ALDER CREEK
E-133	0730	(WTS2) TENDER, WATER (SUPPORT) –
E-148	0730	(ENG6) ENGINE - T6 - 619 (E-619)
E-113	0800	(ENG4) DAVID CARROLL GR (DBA
E-135	0800	(WTS2) TENDER, WATER (SUPPORT) –
E-147	0800	(ENG6) ENGINE - T6 - EYE OF THE
E-151	0800	(ENG6) ENGINE - T6 - TIMBERMAN'S
E-160	0830	(ENG4) ENGINE - T4 - A A A
E-162	0900	(ENG6) ENGINE - T6 - FLASHOVER LLC
E-175	0900	(DOZ3) DOZER - T3 - PINE MOUNTAIN

OVERHEAD

O-299	0700	(HECM) AITCHESON, KEVIN
O-178	0800	(IMET) WISTER, MARY
O-294	0830	(SOFR) GRANT, RYAN J
O-295	1600	(ITSS) DEL ARROYO, ROCIO G
O-288	1100	(RCDM) CHERRY, MAC A
O-259	1800	(READ) CLARK, ALEXANDRA N
O-292	1800	(PIOF) HYSLOP, JEREMIAHS

08/15/2021

CREWS

C-70 0800 (CC) SRV YOUTH CAMP CREW (SRV)

EQUIPMENT

E-138	0600	(RES) REMS UNIT - REMOTE ACCESS
E-111	0700	(ENG6) ROCK CREEK
E-161	0700	(ENG4) ENGINE - T4 - INBOUND, E18
E-176	0700	(DOZ3) DOZER - T3 - MORTIMORE,
E-177	0700	(DOZ3) DOZER - T3 - TRAVERSE LLC –
E-180	0700	(DOZ3) DOZER - T3 - MORTIMORE,
E-134	0730	(WTS2) TENDER, WATER (SUPPORT) –
E-171	0730	(WTS2) TENDER, WATER (SUPPORT) –
E-165	0800	(ENG4) ENGINE - T4 - UTTING
E-169	0800	(WTS2) TENDER, WATER (SUPPORT) –
E-174	0800	(WTS2) TENDER, WATER (SUPPORT) –

OVERHEAD

O-300	0700	(STEN) CWIAK, JAYA
O-290	0700	(GISS) ELWOOD, GREGORY EDWARD
O-336	0700	(HECM) WEBLEY, MICHAEL CLINT
O-237	1700	(FOBS) AHO, TRAVIS
O-264	1800	(ABRO) BARTON, CHRISTOPHER

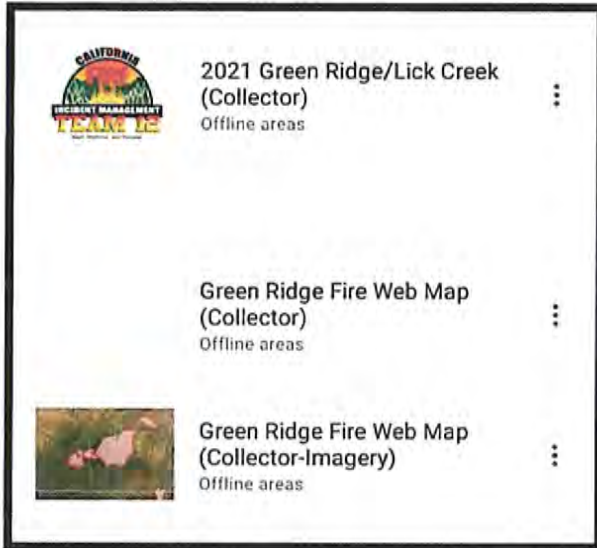
!IMPORTANT!



Collector Update, Please Read and Heed!!



ASAP: Please SYNC and REMOVE Offline areas for the following maps:



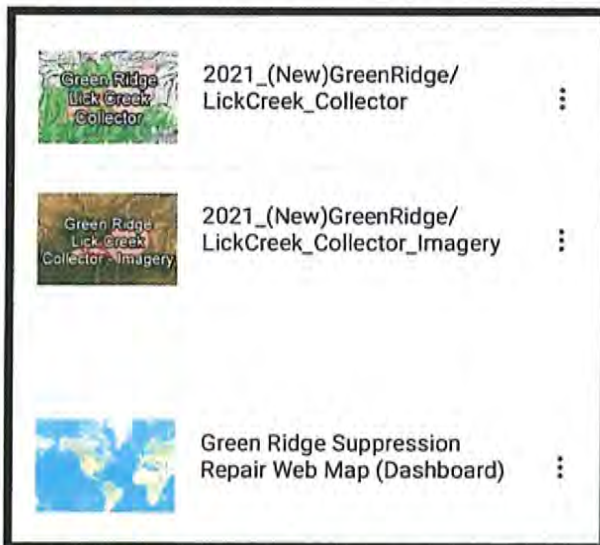
← These 3 maps will be **DISCONTINUED** and **REMOVED FROM USE** starting **Saturday Morning 8/14.**

Don't let your collected data get lost! Sync and Remove your Offline areas for these maps now! **DO NOT** Continue to use these maps!!!

****Discontinued Maps:**

- 2021 Green Ridge/Lick Creek (Collector)
- Green Ridge Fire Web Map (Collector)
- Green Ridge Fire Web Map (Collector – Imagery)

Going Forward: Please download new offline areas and use these collector maps:



**** New Maps:**

- 2021_(New)GreenRidge/LickCreek_Collector**
- 2021_(New)GreenRidge/LickCreek_Collector_Imagery**
- Green Ridge Suppression Repair Web Map (Dashboard) continues to be in use

Improvements of these maps:

- No pre-defined offline area, choose your own
- Structure Triage features can be collected and edited

These Maps are in the RM Black Mobile Editing Group, email

2021.GreenRidge.situation@firenet.gov



RM Black - Mobile Editing
6 Maps



SURVEY 123 – Structure Triage Green Ridge and Lick Creek Now Available!!! Scan the QR code to find it easily



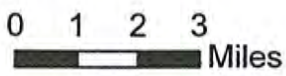
Transportation Map



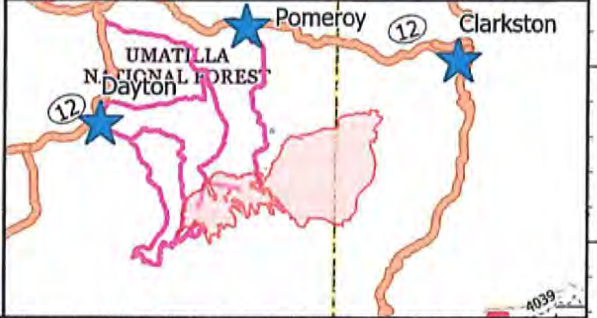
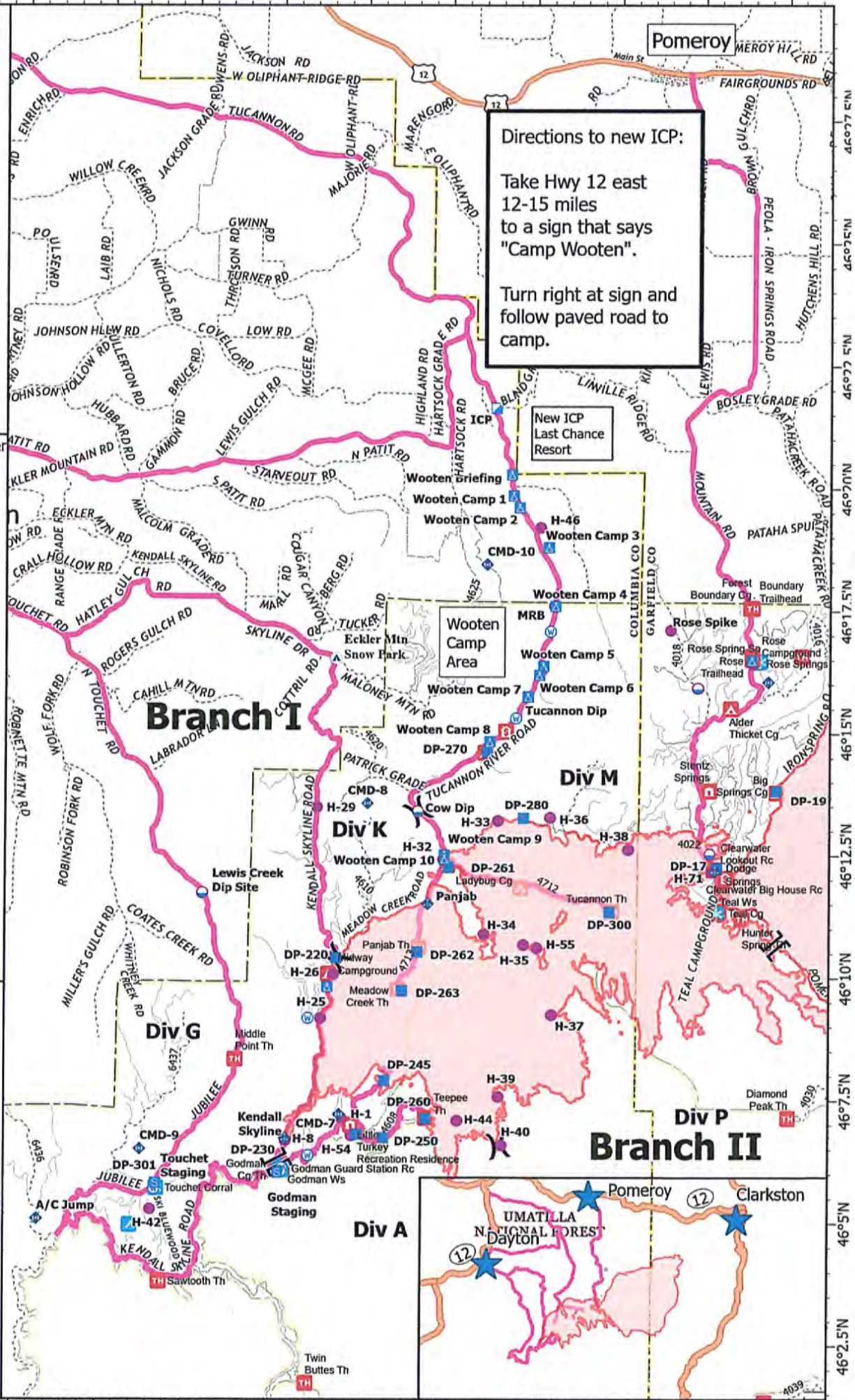
Green Ridge
OR-UMF-000659
8/14/2021 24hr
29,759 acres at
8/12/2021@2314

Directions to new ICP:
Take Hwy 12 east
12-15 miles
to a sign that says
"Camp Wooten".
Turn right at sign and
follow paved road to
camp.

- Wildfire Daily Fire Perimeter
- Dip Site
- Mobile Retardant Base
- Helispot
- Division Break
- Branch Break
- Incident Command Post
- Drop Point
- Camp
- Staging Area
- Mobile Weather Unit
- Repeater
- Water Source
- Wilderness
- County or Equivalent
- Forest Service
- Secondary Hwy
- Local Road
- 4WD



8/13/2021 1938
North American 1983 Datum.





Rocky Mountain IMT Black



Line Supply Order

Date & Time Order was Placed	Order # (BR+DIVS + #)	Location & Time for Delivery (Division/LZ/DP/Lat Long)	Mode of delivery (Driven/Helo/DIVS to Pick up)

Order received in Communications by (name & time):

Order received in Supply by (name & time):

Order received in Transportation by (name & time):

Order received in Helibase by (name & time):

Order shipped to line unit by (name & time): (Send this sheet to the line with the order)

#	Item	Amount	Item	Amount
1.	Meals, Breakfasts	ea	30. Slingable Blivet	ea
2.	Meals, Lunches	ea	31. Folding Tank, specify size	ea
3.	Meals, Dinners	ea	32. Lightweight Pump Kit (Cache)	ea
4.	Meals, MRE's	cs	33. Hose, 1 1/2"	ea
5.	Water, 5 gal. cubic	ea	34. Hose, 1"	ea
6.	Batteries- AA	1-Flat	35. Hose, 3/4"	ea
7.	Batteries, Specify Type	pk	36. Reducer, 1 1/2" x 1"	ea
8.	Flagging, Specify type	roll	37. Reducer, 1" x 3/4"	ea
9.	Gas, raw	gal	38. Gated "Y", 1 1/2"	ea
10.	Bar Oil	gal	39. Gated "Y", 1"	ea
11.	2- cycle oil, chainsaw (2.5 oz)	6 pk	40. Gated "Y" 3/4 "	ea
12.	Sleeping Bags	ea	41. Shut-off Valve, "	ea
13.	Gatorade	cs	42. In-line Tee, 1 1/2" x 1"	ea
14.	Tarps / Plastic	roll	43. Nozzle, 1 1/2"	ea
15.	Parachute Cord	roll	44. Nozzle, 1"	ea
16.	Tool, Shovel	ea	45. Nozzle, 3/4"	ea
17.	Too I, Pulaski	ea	46. 20 Man First Aid Kit	ea
18.	Tool, Combi	ea	47. Chainsaw Kit	ea
19.	Tool, McLeod	ea	48. Toilet Paper (96 per case)	cs
20.	Tool, Specify Type	ea	49. 1000 ft. Hose Lay Kit	ea
21.	Fusee	cs	50. Garbage Bags	bx
22.	Drip Torch	ea	51. Leadline	ea
23.	Drip Torch Mix, 5 gal.	ea	52. Spike Supply Kit	ea
24.	Coffee Kit w/propane	ea	53. Dolmar (6 per case)	ea
25.	Swivel	ea	54. Sprinkler Kit	ea
26.	Backpack Pump	ea	55. LINE Spike Supply Kit	ea
27.	Pumpkin, specify size	ea	56. Duct Tape	roll
28.	Mark 3 Pump Kit w/fuel	ea	57. House Wrap	roll
29.	2-cycle oil, high pressure pump	qt	58. Staple Gun w/ staples	ea

Team Ordering/Timeline Process:

0630 - Morning Briefing, start of crew time.
 1100 - Last call to change spike camp resource hot food location.
 1600 - DIVS to have next day's resource order ready for Planning OPS.

- All crew level orders will be placed through DIVS or Branch.
- DIVS or Branch will place all orders through Communications Unit.
- All orders will be tracked using the process found on the front of this form.

GPS Datum: NAD 83- Degrees, Decimal, Minutes (DDMM.MM)

Definitions

FOB-Forward Operating Base is a secure forward position established to strategize, design and discuss tactics, and for personnel to transfer information and meet.

Line Spike Camp-Managed by Operations at the DIVS level; mobile, short duration and self- sufficient.

Spike Camp-Supported by Logistics, listed in the IAP, numbers in camp are set by 1100, named by Plans.

Emergency Medevac- Life threatening situation requiring immediate medical attention. Handled as per IAP med plan and team SOP's. Communications to clear command channel radio traffic.

Medical Transport-Transport of less serious injury/illness managed by Operations or line Medics back to camp for evaluation and/or treatment.

**1000 ft. Hose Lay Kit
(Order as "#49")**

**Spike Supply Kit
(Order as "#52")**

Quantity	NFES#	Item	Weight	Quantity	NFES#	Item	Weight
10 ea	1239	Hose 1½"	125 lbs	2 rolls	0071	Duct Tape	4 lbs
10 ea	1238	Hose 1"	84 lbs	4 rolls	0222	Fiber Tape	2lbs
20 ea	1016	Hose ¾"	25 lbs	1 case	0021	Trash Bags	21 lbs
5 ea	0231	1½" Gated "Y"	20 lbs	1 case	0465	Cups for hot liquid	18 lbs
5 ea	0259	1" Gated "Y"	13 lbs	2 ea	0070	16x24 Tent fly	40 lbs
10 ea	0904	¾" Gated "Y"	3 lbs	3 ea	0027	Water Wash Basins	2 lbs
5 ea	0010	Reducers 1½" - 1"	3 lbs	1 case		Liquid Hand Soap / pump	10 lbs
5 ea	0733	Reducers 1" - ¾"	2 lbs	18 cases	1842	MRE's	18 x 20= 360 lbs
10 ea	0738 or 0835	Ball Valve ¾"	5 lbs	48 ea	0022	Sleeping bags (dbl. bag)	48 x 5= 240 lbs
10 ea	0138	Nozzle, 1"	5 lbs	3 cases	0030	AA Batteries, 24 pkg./case	90 lbs
10 ea	0136	Nozzle ¾"	5 lbs	1case	0240	Paper Towels	41 lbs
5 ea	0230	Tee 1½x1½x1"/valve	5 lbs	1 case	0142	Toilet Paper	44 lbs
LINE Spike Supply Kit (Order as "#55")				1roll	0144	Plastic sheeting	45 lbs
				1 roll	0533	P-Cord	9 lbs
Quantity	NFES#	Item	Weight	20 ea	7443	Cubies, 5 gal. Full Potable Water	20 x 40= 800 lbs
20+0H	0022	Sleeping bags	20 x 5= 100 lbs	1 box	1059	12" Bastard Files	9lbs
20 ea	7443	Cubies, 5 gal Full	20x40= 800 lbs	1 ea	3444	2-cycle mix, chainsaw (6 pk 2.5 oz)	2lbs
18 cases	1842	MRE's	18x20=360 lbs	8 gal	1880	Bar Oil	64 lbs
1 sl	0533	P-Cord	9 lbs	15 gal		Regular Gas	120 lbs
3 cases	0030	AA Batteries, 24 pkg./case	90 lbs	1 can		3 lbs. can coffee	3 lbs
1 case	0021	Trash bags	21 lbs	1 ea		2 1/2 gal coffee pot or 3-1 gal	10 lbs
10 rolls	0142	Toilet paper	3 lbs	2ea	0089	Ridge pole	46 lbs
1 roll	0144	Plastic sheeting	45 lbs	12 ea	0083	Pole upright	89 lbs
2 rolls	0222	Fiber Tape	2 lbs	24 ea	0825	Stake Tent	24 lbs
1 ea	3444	2-cycle mix, chain-saw (6 pk 2.5 oz)	2 lbs				
4 gal	1880	Bar Oil	32 lbs				
15 gal		Regular Gas	120 lbs				
1 box	1059	12" Bastard Files	9 lbs				



Safety Message

INCIDENT NAME: Lick Creek/Green Ridge

OPERATIONAL PERIOD: 08/14/2021 0600-0600

- | | |
|--|---|
| <ul style="list-style-type: none">• Snags/Hazard Trees• Firing Operations• Driving• Winds | <ul style="list-style-type: none">• Heavy Equipment Operations• Air Operations• ATV/UTV Use• Rolling Materials |
|--|---|

PLANNING FOR CHANGE

As the situation on the fire changes and new areas become priority, it is likely you will soon find yourself on a new piece of ground. Even if you don't change locations, your situation likely has or will change; from adjacent resources, to fire activity, or overhead structure, they might be major or minor, but change is the one true constant in fire.

So how do we plan for change?

- ❖ Know your leaders' intent
- ❖ Remain fluid
- ❖ Know and validate your channels of communication
- ❖ Ask yourself "What can go wrong?"
 - Identify the critical elements of your plan and ask "what if" a loss of one of these elements occurs.
 - Identify the weak link in the plan. Where do you expect a problem?
 - Develop a plan to deal with the problem(s) before they occur.
 - Communicate the plan to all your personnel.
 - Validate the new plan to ensure it matches the current situation.
- ❖ Use the PACE model. Planning for contingency now can help to avoid chaos in the future

SAFETY OFFICERS:

Pat Medina SOF2, Eric White SOF2(t), Ryan Grant SOFR,
Sean Lowry SOFR, Don Foco SOFR, Eric Adams SOFR(t),
Robert Pelton SOF2

COVID GUIDELINES



NWCG screening Tool

MASKS ARE REQUIRED:

BRIEFINGS.

CAN'T MAINTAIN 6FT SOCIAL DISTANCING OUTSIDE.

INDOORS.

VEHICLES. (Example: More than one person in vehicle)

MASK WEARING EXCEPTION:

ALONE IN AN ENCLOSED SPACE. (Example: One person in Vehicle)

ACTIVELY ENGAGED IN FIREFIGHTING ON THE FIRELINE.

OUTSIDE AND CAN MAINTAIN 6FT APART.

EATING OR DRINKING (6FT SOCIAL DISTANCE)

PLEASE CONTACT THE GREEN RIDGE COVID
HOTLINE IF YOU HAVE ANY QUESTIONS ABOUT COVID, SYMPTOMS,
AND OR FREE TESTING.

GREEN RIDGE COVID HOTLINE # 971-245-9407

GREEN RIDGE FIRE FREE COVID TESTING

1. Test is 100% voluntary. **"HIGHLY RECOMMENDED"**
2. The email address below goes straight to the COVID Task Force and is **HIPPA** (Health Insurance Portability and Accountability Act) Compliant. Also, any phone calls or texts to the COVID Hotline is following HIPPA.
3. Please email: **2021.lick.plans@firenet.gov** or call COVID Hotline: **971-245-9407** to schedule your test.
4. We can test you at ICP or Wooten.
6. The test only takes 30 minutes to get results.
7. Please check with your employer or agency if they want you to test before you Demob.
8. Try to let us know 3-days before your demob day so that we can make it as quick as possible.

MEDICAL PLAN (ICS 206 WF)

Controlled Unclassified Information//Basic

1. Incident/Project Name		2. Operational Period				
Lick Creek/Green Ridge Fires		08/14/2021 (06:00) - 08/15/2021 (06:00)				
3. Ambulance Services						
Name	Location	Phone/Frequency	Advanced Life Support (ALS)			
			Yes	No		
Columbia County Fire District #3	111 Patit Road, Dayton, WA 99328	Dial 911		X		
Lewiston Fire Department	1245 Idaho Street, Lewiston, ID 83501	Dial 911	X			
4. Air Ambulance Services						
Name	Phone/Freq	Type of Aircraft & Capability				
Lifeflight - Lewiston	800-232-0911	Bell 407 - ALS, Night Vision				
Lifeflight - Walla Walla	800-232-0911	AW 119 - ALS, Night Vision				
Walla Walla	Contact Air Ops	AS-350B3 - Short Haul				
5. Hospitals						
Name	GPS Datum - WGS 84 DD°	Travel Time		Phone	Helipad	Level of Care Facility
Complete Address	Degrees Minutes Seconds	GND	AIR		Yes No	
St. Mary Medical Center 401 West Poplar Street Walla Walla, WA 99362	Lat: 46°03'40" N	1 hr*	20 min*	509-897-2500	X	Level 3
	Long: 118°20'31" W					
	VHF:					
St. Joseph Regional Medical Cntr 415 6 th Street Lewiston, ID 83501	Lat: 46°25'00" N	1 hr*	20 min*	208-799-5799	X	Level 3
	Long: 117°01'26" W					
	VHF:					
Sacred Heart Medical Center 101 W 8 th Avenue Spokane, WA 99204	Lat: 47°38'56" N	2 hr*	30 min*	509-474-3342	X	Level 2 Trauma Center
	Long: 117°24'46" W					
	VHF:					
Legacy Emanuel Medical Center 2801 North Gantenbein Avenue Portland, OR 97227	Lat: 45°32'40" N	5 hr*	2.5 hr*	503-494-7333	X	Level 1 Trauma Center Burn Center
	Long: 122°40'17" W					
	VHF:					
*Travel times are from the Incident Command Post in Wooten Wildlife Area Headquarters and DO NOT include response time to the incident.						
6. Division Branch Group						
Div A	EMS Responders & Capability:		EMPF Waggoner/Forsythe			
	Equipment Available on Scene:		ALS, AED, Stokes Litter, SKED, UTV			
	Medical Emergency Channel:		TAC 2			
Div G/K	EMS Responders & Capability:		Ambulance 5, EMTF Holborn, EMTF Merrell, Rapid Access Team (RAT)			
	Equipment Available on Scene:		ALS, BLS, AED, Cardiac Monitor, Stokes Litter, SKED, UTV			
	Medical Emergency Channel:		TAC 4			
Div M	EMS Responders & Capability:		Ambulance 6, REMS 10, EMPF Clark, EMTF Jonassen			
	Equipment Available on Scene:		ALS, BLS, AED, Cardiac Monitor, Stokes Litter, SKED, UTV			
	Medical Emergency Channel:		TAC 1			
ICP	EMS Responders & Capability:		Ambulance 7			
	Equipment Available on Scene:		BLS, AED			
	Medical Emergency Channel:		Command			
Nights	EMS Responders & Capability:		Ambulance 4			
	Equipment Available on Scene:		ALS, Cardiac Monitor			
	Medical Emergency Channel:		TAC 6			
	EMS Responders & Capability:					
	Equipment Available on Scene:					
	Medical Emergency Channel:					
	EMS Responders & Capability:					
	Equipment Available on Scene:					
	Medical Emergency Channel:					
7. Prepared By (Medical Unit Leader)		8. Date/Time		9. Reviewed By (Safety Officer)		10. Date/Time
Stephanie McGovern, MEDL(t)		08-13-2021 (20:00)		Rob Pelton, SOF2		08-13-2021 (20:00)

MEDICAL PLAN (ICS 206 WF)

Controlled Unclassified Information//Basic

Medical Incident Report

FOR A NON-EMERGENCY INCIDENT, WORK THROUGH CHAIN OF COMMAND TO REPORT AND TRANSPORT INJURED PERSONNEL AS NECESSARY.

FOR A MEDICAL EMERGENCY: IDENTIFY ON SCENE INCIDENT COMMANDER BY NAME AND POSITION AND ANNOUNCE "MEDICAL EMERGENCY" TO INITIATE RESPONSE FROM IMT COMMUNICATIONS/DISPATCH.

Use the following items to communicate situation to communications/dispatch.

1. CONTACT COMMUNICATIONS / DISPATCH (Verify correct frequency prior to starting report)

Ex: "Communications, Div. Alpha. Stand-by for Emergency Traffic."

2. INCIDENT STATUS: Provide incident summary (including number of patients) and command structure.

Ex: "Communications, I have a Red priority patient, unconscious, struck by a falling tree. Requesting air ambulance to Forest Road 1 at (Lat./Long.) This will be the Trout Meadow Medical, IC is TFLD Jones. EMT Smith is providing medical care."

Severity of Emergency / Transport Priority	<input type="checkbox"/> RED / PRIORITY 1 Life or limb threatening injury or illness. Evacuation need is IMMEDIATE <i>Ex: Unconscious, difficulty breathing, bleeding severely, 2^o - 3^o burns more than 4 palm sizes, heat stroke, disoriented.</i> <input type="checkbox"/> YELLOW / PRIORITY 2 Serious injury or illness. Evacuation may be DELAYED if necessary. <i>Ex: Significant trauma, unable to walk, 2^o - 3^o burns not more than 1-3 palm sizes.</i> <input type="checkbox"/> GREEN / PRIORITY 3 Minor injury or illness. Non-Emergency transport <i>Ex: Sprains, strains, minor heat-related illness.</i>	
Nature of Injury or Illness & Mechanism of Injury		Brief Summary of Injury or Illness <i>(Ex: Unconscious, Struck by Falling Tree)</i>
Transport Request		Air Ambulance / Short Haul/Hoist Ground Ambulance / Other
Patient Location		Descriptive Location & Lat. / Long. (WGS84)
Incident Name		Geographic Name + "Medical" <i>(Ex: Trout Meadow Medical)</i>
On-Scene Incident Commander		Name of on-scene IC of Incident within an Incident <i>(Ex: TFLD Jones)</i>
Patient Care		Name of Care Provider <i>(Ex: EMT Smith)</i>

3. INITIAL PATIENT ASSESSMENT: Complete this section for each patient as applicable (start with the most severe patient)

Patient Assessment: See IRPG page 106

Treatment:

4. TRANSPORT PLAN:

Evacuation Location (if different): (Descriptive Location (drop point, intersection, etc.) or Lat. / Long.) Patient's ETA to Evacuation Location:

Helispot / Extraction Site Size and Hazards:

5. ADDITIONAL RESOURCES / EQUIPMENT NEEDS:

Example: Paramedic/EMT, Crews, Immobilization Devices, AED, Oxygen, Trauma Bag, IV/Fluid(s), Splints, Rope rescue, Wheeled litter, HAZMAT, Extrication

6. COMMUNICATIONS: Identify State Air/Ground EMS Frequencies and Hospital Contacts as applicable

Function	Channel Name/Number	Receive (RX)	Tone/NAC *	Transmit (TX)	Tone/NAC *
COMMAND					
AIR-TO-GRND					
TACTICAL					

7. CONTINGENCY: Considerations: If primary options fail, what actions can be implemented in conjunction with primary evacuation method? Be thinking ahead.

8. ADDITIONAL INFORMATION: Updates/Changes, etc.

REMEMBER: Confirm ETA's of resources ordered. Act according to your level of training. Be Alert. Keep Calm. Think Clearly. Act Decisively.

