

# Lick Creek – Green Ridge Fires

OR-UMF-000658 / OR-UMF-000659  
P6N5AV (0614)

Send TIME to: [2021.greenridge.finance@firenet.gov](mailto:2021.greenridge.finance@firenet.gov)

**Sunday, August 15, 2021 – Monday, August 16, 2021**

**Operational Period 0600-0600**



## Rocky Mountain IMT2 Black

Troy Hagan, ICT2 — Bill Waln, Deputy ICT2

Public Fire Information  
[2021.greenridge@firenet.gov](mailto:2021.greenridge@firenet.gov)

IAP/Map/Demob/Check-in/Etc



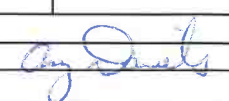
<https://tinyurl.com/jtb3wzk6>

**Communications 24-Hour  
Emergency Number:**

**971-727-7965**

<b>1. Incident Name:</b> <b>Lick Creek / Green Ridge</b>	<b>2. Operational Period:</b>	Date From: <b>08.14.2021</b> Date To: <b>08.15.2021</b> Time From: <b>0600</b> Time To: <b>0600</b>
<b>3. Objective(s):</b> <ul style="list-style-type: none"> <li>• Provide for the safety of firefighters and the public through the utilization of strategic and deliberate risk assessment processes. Ensure incident within an incident (IWI) protocols are established.</li> <li>• Develop and implement strategy and tactics with the highest probability of success to protect identified values at risk.</li> <li>• Maintain and enhance relationships, through timely communication, actively engaging the Agency Administrators, the public, and stakeholders.</li> <li>• Coordinate with the READs to ensure natural and historical values are identified and protected.</li> <li>• Assist with initial attack as requested, when it will not impede meeting of incident objectives.</li> <li>• Manage the incident following established COVID-19 mitigation guidelines limiting spread of infectious diseases.</li> </ul>		
<b>4. Safety</b> Safety is something that happens between your ears, not something you hold in your hand. A few considerations you should take in consideration would be.  Situation awareness: background, process, and benefits and practice.  Attitude: how it affects those around you.  Complacency: definition/significance Making wise choices: most tasks we engage in require us to make choices or decisions or choosing alternative courses of action or failing to recognize that there are alternative ways to act (distraction).  There is a danger of safety messages becoming too repetitive.  Exposure to risk over the long term produces cumulative risk. Cumulative risk is risk that increases over the long term. The more you repeat the behavior, the greater the chance that something bad will happen. Russian roulette.  As soon as you see a mistake and do not fix it, it becomes your mistake.  Check new arrivals to ensure that they know how to program king radios to the scan function. Do not assume everyone knows how to do.		
<b>5. Prepared by PSC2:</b>	Name: Rocco Snart Signature: <u>Rocco Snart</u>	
<b>6. Approved by Incident Commander:</b>	Name: Troy Hagan Signature: <u>Troy Hagan</u>	
<b>ICS 202</b>	<b>IAP Page 2</b>	Date/Time: Date: 08/14/2021   2000 hours

## ORGANIZATION ASSIGNMENT LIST (ICS 203)

<b>1. Incident Name:</b> LICK CREEK/GREEN RIDGE		<b>2. Operational Period: Date From:</b> 8/15/2021 Time From: 0600		<b>Date To:</b> 8/16/2021 <b>Time To:</b> 0600	
<b>3. Incident Commander(s) and Command Staff:</b>			<b>7. Operation Section:</b>		
IC	Troy Hagan	Operations Chief	Shay Rogge, Brad Pietruszka (T)		
Deputy	Bill Waln	Planning Ops			
Safety Officer	Rob Pelton, Pat Medina, Eric White (T), Eric Adams (T)				
Medical	Kevin Ratzmann, Jeff Basamanowicz, Stephanie McGovern (T)		<b>Branch I</b>	Rodney Redinger, Jay Godson (T)	
Information Officer	Dawn Sanchez, Brant Porter, Olivia Bruce (T)	Division/Group	G/K	Nate Kerschner, Isaiah Jimenez (T)	
Liaison Officer	Sam Carle, Mark Neely, Bonnie Gibbons (T)	Division/Group	M	Brandon Bonenberger, Daniel Kamakani (T)	
Human Resource Specialist	Michael Baines	Division/Group	LICK	Jon Stonelake, Neal McCann (T)	
<b>4. Agency/Organization Representatives:</b>		Division/Group	NORTH	Nick Collard, Dave Collins (T)	
Agency/Organization	Name		STAGING	Shelly White	
USFS AADM	Anthony Botello				
USFS AREP	Susan Piper				
WA DNR	Wyatt Leighton, Tom Schoenfelder		<b>Branch II</b>	Matt Norden, Deon Steinle (T)	
Asotin Co Fire Dist 1	Noel Hardin	Division/Group	A	Tom Kenny, Brad Bryant (T)	
Columbia Co Fire 3	Jeromy Phinney	Division/Group	P	Ian Barrett, Aaron Woodham (T)	
Garfield Co Fire Dist 1	James Cleveland				
WFS	Devin McCosh		<b>NIGHT</b>	Troy Mueller	
WDFW - LEO	Paul Mosman				
Covid Liaison	Cass Monroe, Steve Medina	Division/Group	NIGHT	Chris Rokosh, Jeff Corser (T)	
<b>5. Planning Section:</b>			<b>8. Air Operations Branch</b>		
Chief	Rocco Snart, Heather Gonzalez, Peter Barth	Air Operations Branch Director	Carolyn Blatz, Matt Lingenfelter (T)		
		Air Support Group Supervisor	Ken Ostrom		
Resource Unit	Kellie Stover, Amy Daniels, Rick Lancaster (T)	Air Tactical Group Supervisor	Tim Haas		
		Helibase Manager	Lee Steward		
Situation Unit	Tara Umphries, Kristen Marshall (T), Brenda Wasielewski (T)				
Demobilization Unit	Dave Farmer	<b>9. Finance/Administration Section:</b>			
Incident Meteorologist	Mary Wister, Matt Jeglum	Chief	Mavis Biastoch, Patty Wyatt		
Status Check-In	Rose Long	Time Unit	Sonia Anderson, Kayla Clark		
Fire Behavior	Larry Long	Cost Unit	Kristie Bowen (T)		
Documentation Unit	Spencer Pollock (V)	Compensation Unit	Pearl Cowan		
GIS Specialist	Sarlyn McCormick, Jean Olson, Faith Dziedzic, Sarah Strehle (T)				
Strategic Planner					
Long Term Analyst	Kirk Will (T)				
Training Specialist	Amy Daniels, Heather Gonzalez (T), Wendy Fischer (T)				
<b>6. Logistics Section</b>					
Chief	Wally Leander, Randy Spiering, Darin Gehring				
Ground Support Unit	Jamie Rietz				
Communications	Jim Midyett				
Facilities - ICP	Monty Bollock, Ken Hehr, David Brown				
Facilities - Rose Spike	Mike Kinne				
IT Specialist	Kevin Watts, Jason Reynolds (T)				
Supply Unit	Robin Brooks, Nate Haynes (T)				
Food Unit	Clyde Leggins				
Security	Darrell Hanson, Clyde Harris (T)				
<b>Prepared By: Name:</b> Amy Daniels <b>Position/Title:</b> RESL <b>Signature:</b> 					
<b>ICS 203</b> <b>Date/Time:</b> 8/14/2021 2100 hours					



## Lick Creek / Green Ridge Weather Forecast



**FORECAST NO:** 35  
**FORECAST FOR:** Sunday Operational Period  
**SHIFT DATE:** 8/15/2021  
**DATE AND TIME ISSUED:** 8/14/2021 at 1900 PDT

**NAME OF FIRE:** Lick Creek/Green Ridge  
**UNIT:** OR-UMF  
**SIGNED:** *Mary Wister* - Incident Meteorologist  
mary.wister@noaa.gov

---

### ...Breezy Winds from the West-Southwest through Monday...

**WEATHER DISCUSSION:** Winds are shifting to a west-southwest direction and will increase this afternoon and evening due to a cold frontal passage. West-east drainages such as the Tucannon River drainage may be exposed to wind alignment and the potential for winds to accelerate. Winds will relax some late tonight but increase again on Monday with stronger gusts. Today will be the last hot day with low humidity, and a cooling trend begins Monday.

---

#### TODAY:

**WEATHER:** Partly cloudy.

**MAXIMUM TEMPERATURE:** 82-87° above 5000 feet. 93-97° valley bottoms.

**MINIMUM RELATIVE HUMIDITY:** 20-25% above 5000 feet. 15-20% valley bottoms.

**20-FOOT RIDGETOP WINDS:** West-Southwest 5-10 mph in the morning...increasing to 8-12 mph with gusts to 20 mph after 1400..

**GREEN RIDGE CREEKS:** Upslope/Upcanyon 3-8 mph. West winds gusting to 10 mph through the Tucannon River drainage and other west-east drainages.

**CHANCE OF WETTING RAIN ( $\geq 0.10''$ ):** 0%.

**HAINES INDEX:** 3 (Very Low).

**INVERSION/STABILITY:** Low level inversion lifts around 1000. Unstable above the inversion.

---

#### TONIGHT:

**WEATHER:** Decreasing clouds. Breezy

**MINIMUM TEMPERATURE:** 68-72° above 5000 feet. 55-60° valley bottoms.

**MAXIMUM RELATIVE HUMIDITY:** 30-35% above 5000 feet. 55-60% valley bottoms.

**20-FOOT RIDGETOP WINDS:** West-Southwest 8-12 mph with evening gusts to 22 mph. Gusts to 18 mph after midnight.

**GREEN RIDGE CREEKS:** Downslope/Down canyon 2-5 mph. West winds gusting to 12 mph through the Tucannon River drainage and other west-east drainages in the evening.

**CHANCE OF WETTING RAIN ( $\geq 0.10''$ ):** 0% .

**LIGHTNING ACTIVITY LEVEL:** 1.

**HAINES INDEX:** 4 (Low)

**INVERSION/STABILITY:** Marginally unstable above the low level inversion.

---

#### MONDAY:

**WEATHER:** Partly cloudy. Cooler. Breezy.

**MAXIMUM TEMPERATURE:** 75-80° above 5000 feet. 86-91° valley bottoms.

**MINIMUM RELATIVE HUMIDITY:** 27-32% above 5000 feet. 20-25% valley bottoms.

**20-FOOT RIDGETOP WINDS:** West-Southwest 9-13 mph with gusts to 25 mph.

**GREEN RIDGE CREEKS:** Upslope/Upcanyon 3-8 mph. West winds gusting to 12 mph through the Tucannon River drainage and other west-east drainages in the evening.

**CHANCE OF WETTING RAIN ( $\geq 0.10''$ ):** 0%.

**HAINES INDEX:** 3 (Very Low).

**INVERSION/STABILITY:** Low level inversion lifts around 1000. Unstable above the inversion.

## FIRE BEHAVIOR FORECAST

FORECAST NUMBER: 20	TYPE OF FIRE: Wildfire
FIRE NAME: Lick Creek & Green Ridge Fires	OPERATIONAL PERIOD: 08-15-2021 24 Hour
DATE ISSUED: 08-14-2021	TIME ISSUED: 1900
UNIT: Umatilla NF OR-UMF-000658 & 000659	SIGNED: //s// Larry Long FBAN

### INPUTS

**\*\*See the attached Incident Weather Forecast\*\***

### OUTPUTS FIRE BEHAVIOR

**GENERAL:** Wind speeds will increase today resulting in slightly higher rates of spread and higher fire intensity than what we've seen the last few days, especially in the late afternoon. Expect torching and spotting throughout the day and well into the night due to the low RH's and high temperatures.

**Probability of ignition is 90% with spotting distances of 2000 feet possible. Haines Index 3**

**1-hour fuel moistures: 3%, 10 hours at 4%, 100 hours at 7%, 1000-hour fuels are ~8 % and live fuel moistures are at around 75-95%. ERCs are above the 97<sup>th</sup> percentile.**

Fuel model	Max. Flame Length	Day Shift ROS	Night Shift ROS	Spotting
Timber little and understory TU5/TL4	9-10 ft.	13-24 ch/hr	9-19 ch/hr	.4 miles
Short Grass/Shrub – GR2	4-7 ft.	22-54 ch/hr	7-16 ch/hr	.4 miles

### SPECIFIC:

**Green Ridge:** The fire will continue to progress up and out of the drainages on the south flank, pushed by an upslope wind of 3-8 MPH and the west-southwest general winds. The fire will be active in the heavier concentrations of fuels as the winds surface causing torching and spotting. The active line in divisions A & P will move along the drainages and over the ridges to the east and southeast. The Lick Creek fire has provided an effective barrier towards the east.

**Lick Creek:** The WSW winds today should again be favorable by pushing the heat and smoke into the interior. Expect interior fuels to continue to consume and put off smoke.

**Night Division:** Due to the late burning periods, anticipate daytime burning conditions to continue well into the late evening and continuing until the downslope winds set up and/or the humidity recovers. Expect torching and spotting, especially on the uphill runs.

**AIR OPERATIONS:** Heavy smoke may hamper air operations.

### SAFETY

Local Thresholds – **WATCHOUT:** Combinations of any of these factors can greatly increase fire behavior:

Elevations	20' Winds +15 mph	RH <20%	Temp +80°	1000hr Fuel <7%
3000 –5500'	WSW 8-12 mph G20	15-20%	93-97°	~8%

# ASSIGNMENT LIST (ICS 204 WF)

CONTROLLED UNCLASSIFIED  
INFORMATION//BASIC

<b>1. Incident Name:</b>	<b>2. Operational Period:</b>	<b>3. Branch</b>	<b>Division</b>
<b>LICK CREEK/GREEN RIDGE</b>	Date From: 08/15/21    Date To: 08/16/21 Time From: 0600    Time To: 0600	<b>I</b>	<b>G/K</b>

<b>4. Operations Personnel:</b>	
Operations Section Chief: <b>Shay Rogge, Brad Pietruszka (T)</b>	Planning Ops
Branch Director: <b>Rodney Redinger, Jay Godson (T)</b>	Safety: <b>Rob Pelton, Eric White (T)</b>
Division/Group Supervisor: <b>Nate Kerschner, Isaiah Jimenez (T)</b>	Air Attack: <b>Tim Haas</b>

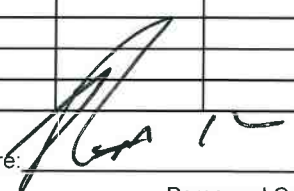
<b>5. Resources Assigned:</b>							
Resource Identifier	ALS	LWD	Leader	Personnel	Request #	Hours	Reporting Location
TFLD Nilson		8/25	Nilson	1	O-523	0600-2200	Dayton Spike
TFLD(T) Livingston		8/26	Livingston	1	O-568	0600-2200	Dayton Spike
HC2 Mosqueda Ref GR		8/17	Equihua	20	C-45	0600-2200	Dayton Spike
ENG4 Hi Country GR		8/19	Burnette	3	E-127	0600-2200	Dayton Spike
ENG4 Ice Crescent		8/26	Freitag	3	E-285	0600-2200	Dayton Spike
ENG6 Terrance Titus		8/26	Lambrech	2	E-255	0600-2200	Dayton Spike
WTT2 Christman Trucking GR		8/20	Blazek	1	E-2	0600-2200	Dayton Spike
WTT2 Overpeck GR		8/17	Melton	1	E-3	0600-2200	Dayton Spike
WTS2 Fire Sail		8/28	Mitchell	1	E-298	0600-2200	Dayton Spike
WTS2 Vegetation Solutions		8/27	Cole	2	E-299	0600-2200	Dayton Spike
WTS2 A1 Firestorm		8/27	Wallace	1	E-300	0600-2200	Dayton Spike
WTS3 TKO		8/28	Cantarella	1	E-303	0600-2200	Dayton Spike
DO22 Alpine GR		8/17	Briggs	2	E-93	0600-2200	Dayton Spike
FEL1 Bruce Young GR		8/22	McCleran	2	E-79	0600-2200	Dayton Spike
MAST Tucannon Outfitters GR		8/21	Martin	1	E-107	0600-2200	Dayton Spike
GRD Britt		8/26	Nichols	2	E-266	0600-2200	Dayton Spike
SOFR Welsh		8/26	Welsh	1	O-565	0600-2200	Dayton Spike
SOFR(T) Lowry GR		8/16	Lowry	1	O-337	0600-2200	Dayton Spike
EMTF Holborn GR		8/17	Holborn	1	O-281	0600-2200	Dayton Spike
EMTF Merrell GR		8/18	Merrell	1	O-359	0600-2200	Dayton Spike

**6. Work Assignments:**  
 Plumb handline from DP 40 to the 050 Road.  
 Continue to improve contingency dozer line and handline from repeater to Patrick Grade Road.  
 Continue to improve where needed on 46 Road north of Godman staging to DP-220 DIV M break.  
 Patrol and mop up from DP-220 to Godman staging.

**7. Special Instructions:**  
 Fireline Medics (E-59) located at DP-220.  
 Adventure Medics (E-77) located at DP-240. Lead READ Aaron Malson: 530-917-5701  
 RAT1 (E-138) located on Skyline Drive.  
 Operations will identify closest resources while DIVS identifies specific resources to respond to IA within TFR.  
 Please ensure 3/32" fish screens are used at all draft sites in Punjab Creek, Touchet, and Tucannon Rivers.

**8. Communications**

Name	Ch	Function	Rx Freq	Rx Tone	Tx Freq	Tx Tone	Notes
SEE ICS 205 COMM PLAN							

**9. Prepared by: Name:** Kellie Stover, Amy Daniels, Rick Lancaster(T)    RESL    Signature: 

**ICS 204**    Date/Time: 8/14/2021 2200    Personnel Count: 48

# ASSIGNMENT LIST (ICS 204 WF)

CONTROLLED UNCLASSIFIED  
INFORMATION//BASIC

<b>1. Incident Name:</b>	<b>2. Operational Period:</b>	<b>3. Branch</b>	<b>Division</b>
<b>LICK CREEK/GREEN RIDGE</b>	Date From: 08/15/21      Date To: 08/16/21 Time From: 0600              Time To: 0600	<b>I</b>	<b>M</b>

<b>4. Operations Personnel:</b>			
Operations Section Chief: <b>Shay Rogge, Brad Pietruszka (T)</b>	Planning Ops		
Branch Director: <b>Rodney Redinger, Jay Godson (T)</b>	Safety: <b>Rob Pelton, Eric White (T)</b>		
Division/Group Supervisor: <b>Brandon Bonenberger, Daniel Kamakani (T)</b>	Air Attack: <b>Tim Haas</b>		

<b>5. Resources Assigned:</b>							
Resource Identifier	ALS	LWD	Leader	Personnel	Request #	Hours	Reporting Location
TFLD(T) Bowen		8/20	Bowen	1	O-463	0600-2200	Rose Spike
TFLD(T) Dary		8/21	Dary	1	O-460	0600-2200	Rose Spike
HC2IA UMF Crew 3		8/21	Wagner	20	C-104	0600-2200	Rose Spike
HC2IA Vet Crew		8/20	Leggett	18	C-105	0600-2200	Rose Spike
HC2 Blue Mountain GR		8/17	Perez	20	C-43	0600-2200	Rose Spike
ENG3 Prescott E-930		8/23	Langham	5	E-254	0600-2200	Rose Spike
ENG4 Chewack LC		8/17	Stark	3	E-85	0600-2200	Wooten Camp
ENG6 ASF E623		8/27	Holmes	6	E-275	0600-2200	Rose Spike
WTS2 Panther DG		8/18	Davis	1	E-45	0600-2200	Wooten Camp
WTS2 Lovato GR		8/28	Lovato	1	E-135	0600-2200	Wooten Camp
WTS2 Rahi GR		8/19	Rahi	1	E-136	0600-2200	Wooten Camp
WTS3 JTS 2 GR		8/31	Elam	1	E-172	0600-2200	Wooten Camp
FMOD Mill Creek GR		8/20	Johnson	2	O-442	0600-2200	Wooten Camp
SOF2 Roberts		8/17	Roberts	1	O-567	0600-2200	Rose Spike
SOFR Foco GR		8/18	Foco	1	O-368	0600-2200	Wooten Camp
EMPF Clark		8/27	Clark	1	O-529	0600-2200	Rose Spike
EMTF Jonassen GR		8/16	Jonassen	1	O-196	0600-2200	Wooten Camp

**6. Work Assignments:**  
 Hold and mop-up from 40 Road to the DIV K/M break.  
 Burnout islands as needed.  
 Coordinate with adjacent Divisions for additional holding resources.  
 Improve handlines where possible.  
 Secure spot fires north of DIV K/M containment lines.

**7. Special Instructions:**  
 REMS 10 (E-185) located at DP-17. Lead READ Aaron Malson: 530-917-5701  
 Wilderness Medics (E-39) located at DP-17.  
 DIVS to identify equipment to be sent in an event of an IA within TFR. Operations will identify closest resources to respond to new incident.  
 Please ensure 3/32" fish screens are used at all draft sites in Punjab Creek, Touchet, and Tucannon Rivers.

<b>8. Communications</b>							
Name	Ch	Function	Rx Freq	Rx Tone	Tx Freq	Tx Tone	Notes
SEE ICS 205 COMM PLAN							

<b>9. Prepared by: Name:</b>	Kellie Stover, Amy Daniels, Rick Lancaster(T)	RESL	Signature:	
<b>ICS 204</b>	Date/Time: 8/14/2021	2200	Personnel Count:	84

# ASSIGNMENT LIST (ICS 204 WF)

CONTROLLED UNCLASSIFIED  
INFORMATION//BASIC

<b>1. Incident Name:</b>	<b>2. Operational Period:</b>	<b>3. Branch</b>	<b>Division</b>
<b>LICK CREEK/GREEN RIDGE</b>	Date From: 08/15/21      Date To: 08/16/21 Time From: 0600              Time To: 0600	<b>I</b>	<b>LICK</b>

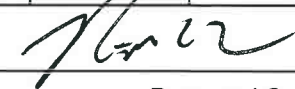
<b>4. Operations Personnel:</b>	
Operations Section Chief: <b>Shay Rogge, Brad Pietruszka (T)</b>	Planning Ops
Branch Director: <b>Rodney Redinger, Jay Godson (T)</b>	Safety: <b>Rob Pelton, Eric White (T)</b>
Division/Group Supervisor: <b>Jon Stonelake, Neal McCann (T)</b>	Air Attack: <b>Tim Haas</b>

<b>5. Resources Assigned:</b>							
Resource Identifier	ALS	LWD	Leader	Personnel	Request #	Hours	Reporting Location
TFLD(T) Walters GR		8/16	Walters	1	O-329	0600-2200	Wooten Camp
HC1 Silver City IHC GR		8/20	Romero	21	C-96	0600-2200	Rose Spike
HC1 Prescott IHC		8/26	Fisher	20	C-100	0600-2200	Rose Spike
SMOD Williams 7-1		8/25	Sweeney	10	O-520	0600-2200	Rose Spike
STEN Cwiak GR		8/14	Cwiak	1	O-300	0600-2200	Wooten Camp
ENG3 B-5232		8/26	Fry	4	E-256	0600-2200	Rose Spike
ENG3 Smokey Bear		8/22	Quirarte	6	E-257	0600-2200	Rose Spike
ENG4 Central Wildfire		8/27	Ward	3	E-259	0600-2200	Wooten Camp
ENG6 Earth Industries		8/25	Voss	3	E-246	0600-2200	Wooten Camp
ENG6 Eagle Cap		8/28	Rivera	2	E-284	0600-2200	Wooten Camp
WTS2 Ash Kickers DG		8/23	Waldron	1	E-15	0600-2200	Wooten Camp
WTS2 Minam River DG		8/26	Henderson	1	E-40	0600-2200	Wooten Camp
WTS2 Huffman GR		8/28	Huffman	1	E-167	0600-2200	Wooten Camp
WTS2 McDonald		8/24	McDonald	1	E-247	0600-2200	Wooten Camp
WTS3 JTS 1 GR		8/31	Elmer	1	E-170	0600-2200	Wooten Camp
DOZ2 Overpeck GR		8/18	Overpeck	2	E-4	0600-2200	Rose Spike
DOZ3 Traverse GR		8/25	Wilcox	2	E-177	0600-2200	Rose Spike

**6. Work Assignments:**  
 Patrol and mop up as needed to secure fire's edge along the Lick/M division break.  
 Periodic patrols of the southern portion of the Lick Fire. Continue to assist Division M with water support as needed.  
 Assess and implement structure protection in the Stentz Summer Group Home Development.  
 Look for and suppress spot fires where safe to do so.

**7. Special Instructions:**  
 Operations will identify closest resources while DIVS identifies specific resources to respond to IA within TFR.  
 Please make sure 3/32" fish screens are used at all draft sites in Punjab Creek, Touchet, and Tucannon Rivers.  
 Operational briefing to be broadcasted at Wooten Camp at 0630. See IAP for details. Lead READ Aaron Malson: 530-917-5701

Name	Ch	Function	Rx Freq	Rx Tone	Tx Freq	Tx Tone	Notes
SEE ICS 205 COMM PLAN							

**9. Prepared by: Name:** Kellie Stover, Amy Daniels, Rick Lancaster(T)      RESL      Signature: 

**ICS 204**      Date/Time: 8/14/2021      2200      Personnel Count: 80



# ASSIGNMENT LIST (ICS 204 WF)

CONTROLLED UNCLASSIFIED  
INFORMATION//BASIC

<b>1. Incident Name:</b>	<b>2. Operational Period:</b>	<b>3. Branch</b>	<b>Division</b>
<b>LICK CREEK/GREEN RIDGE</b>	Date From: 08/15/21      Date To: 08/16/21 Time From: 0600              Time To: 0600	<b>I</b>	<b>NORTH</b>


<b>4. Operations Personnel:</b>			
Operations Section Chief: <b>Shay Rogge, Brad Pietruszka (T)</b>	Planning Ops:		
Branch Director: <b>Rodney Redinger, Jay Godson (T)</b>	Safety: <b>Rob Pelton, Eric White (T)</b>		
Division/Group Supervisor: <b>Nick Collard, Dave Collins (T)</b>	Air Attack: <b>Tim Haas</b>		

<b>5. Resources Assigned:</b>							
Resource Identifier	ALS	LWD	Leader	Personnel	Request #	Hours	Reporting Location
WTS2 MVP Team DG		8/16	Konrad	1	E-48	0600-2200	Rose Spike
WTS2 Green Mountain GR		8/17	Stevens	1	E-168	0600-2200	Rose Spike
WTS2 Hek Jones GR		8/14	Long	1	E-171	0600-2200	Rose Spike
FMOD Swedberg		8/22	Wadley	2	O-439	0600-2200	Rose Spike
FMOD Woodworth GR		8/20	Woodworth	2	O-441	0600-2200	Rose Spike
HEQB Beehler		8/16	Beehler	1	O-501	0600-2200	Rose Spike
HEQB(T) Chris Carney		8/21	Carney	1	O-458	0600-2200	Rose Spike
DOZ3 Bruce Young GR		8/26	Miltonberger	2	E-85	0600-2200	Rose Spike
DOZ3 Kiser & Kiser 1 GR		8/28	Chamberlin	2	E-178	0600-2200	Rose Spike
DOZ3 Kiser & Kiser 2 GR		8/15	Kiser	2	E-179	0600-2200	Rose Spike
FEL2 Wyeast GR		8/28	Bierbower	2	E-102	0600-2200	Rose Spike
MAST Bruce Young GR		8/26	Nichols	2	E-69	0600-2200	Rose Spike
MAST Eagle CAP GR		8/28	Pierce	2	E-70	0600-2200	Rose Spike
MAST Hayden 2 GR		8/28	Hayden	2	E-72	0600-2200	Rose Spike
GRD Alvord GR		8/23	Davis	2	E-132	0600-2200	Rose Spike
CHIP JML		8/23	Jasiel	3	E-241	0600-2200	Rose Spike
SOFR Foco GR		8/18	Foco	1	O-368	0600-2200	Rose Spike

**6. Work Assignments:**  
 Construct contingency line on the 4016 Road from the 40 Road to the Lick Fire.  
 Coordinate contingency line construction with READs.  
 Communicate with Division Supervisors for holding resources as needed.

**7. Special Instructions:**  
 Expect delays on 4016 Road due to heavy equipment operations. If you need to travel it, time your travel prior to 0800, between 1300-1400, or after 1800.  
 Command 11 repeater is operational. Lead READ Aaron Malson: 530-917-5701  
 DIVS to identify equipment to be sent in an event of an IA within TFR. Operations will identify closest resources to respond to new incident.  
 Please make sure 3/32" fish screens are used at all draft sites in Punjab Creek, Touchet, and Tucannon Rivers.

<b>8. Communications</b>							
Name	Ch	Function	Rx Freq	Rx Tone	Tx Freq	Tx Tone	Notes
SEE ICS 205 COMM PLAN							

**9. Prepared by: Name:** Kellie Stover, Amy Daniels, Rick Lancaster(T)      RESL      Signature: 

**ICS 204**      Date/Time: 8/14/2021 2200      Personnel Count: 29

# ASSIGNMENT LIST (ICS 204 WF)

CONTROLLED UNCLASSIFIED  
INFORMATION//MITTENS

<b>1. Incident Name:</b> <b>LICK CREEK/GREEN RIDGE</b>	<b>2. Operational Period:</b> Date From: 08/15/21    Date To: 08/16/21 Time From: 0600    Time To: 0600	<b>3. Branch</b> <b>II</b>	<b>Division</b> <b>A</b>
---	---	-------------------------------	-----------------------------

<b>4. Operations Personnel:</b>	
Operations Section Chief: <b>Shay Rogge, Brad Pietruszka (T)</b>	Planning Ops
Branch Director: <b>Matt Norden, Deon Steinle (T)</b>	Safety: <b>Rob Pelton, Eric White (T)</b>
Division/Group Supervisor: <b>Tom Kenny, Brad Bryant (T)</b>	Air Attack: <b>Tim Haas</b>

<b>5. Resources Assigned:</b>							
Resource Identifier	ALS	LWD	Leader	Personnel	Request #	Hours	Reporting Location
ENG4 Alder Creek 2 GR		8/15	Stewart	3	E-164	0600-2200	Dayton Spike
ENG6 AZ E161 LC		8/17	Jones	3	E-105	0600-2200	Dayton Spike
ENG6 Rock Creek GR		8/14	Mitchell	3	E-111	0600-2200	Dayton Spike
ENG6 Griz One		8/26	Berke	3	E-264	0600-2200	Dayton Spike
HEQB(T) Naughton		8/27	Naughton	1	O-606	0600-2200	Dayton Spike
SOFR Welsh		8/26	Welsh	1	O-565	0600-2200	Dayton Spike
SOFR(T) Lowry GR		8/16	Lowry	1	O-337	0600-2200	Dayton Spike

**6. Work Assignments:**  
Continue to improve line where needed from DIV A/G break east to DIV A/S break.  
Take action as needed to ensure that existing structures and infrastructures do not sustain further damage.  
Provide for structure protection to Little Turkey Tail Recreation Residence Area.

**7. Special Instructions:**  
Adventure Medics (E-77) located at DP-240. Lead READ Aaron Malson: 530-917-5701  
RAT1 (E-138) located on Skyline Drive.  
DIVS to identify equipment to be sent in an event of an IA within TFR. Operations will identify closest resources to respond to new incident.  
Please ensure 3/32" fish screens are used at all draft sites in Punjab Creek, Touchet, and Tucannon Rivers.

**8. Communications:**

Name	Ch	Function	Rx Freq	Rx Tone	Tx Freq	Tx Tone	Notes
SEE ICS 205 COMM PLAN							

**9. Prepared by: Name:** Kellie Stover, Amy Daniels, Rick Lancaster(T)    RESL    Signature:     Personnel Count: 15  
**ICS 204**    Date/Time: 8/14/2021    2200

# ASSIGNMENT LIST (ICS 204 WF)

CONTROLLED UNCLASSIFIED  
INFORMATION//MITTENS

<b>1. Incident Name:</b>	<b>2. Operational Period:</b>	<b>3. Branch</b>	<b>Division</b>
<b>LICK CREEK/GREEN RIDGE</b>	Date From: 08/15/21    Date To: 08/16/21 Time From: 0600    Time To: 0600	<b>II</b>	<b>P</b>

<b>4. Operations Personnel:</b>	
Operations Section Chief: <b>Shay Rogge, Brad Pietruszka (T)</b>	Planning Ops
Branch Director: <b>Matt Norden, Deon Steinle (T)</b>	Safety: <b>Rob Pelton, Eric White (T)</b>
Division/Group Supervisor: <b>Ian Barrett, Aaron Woodham (T)</b>	Air Attack: <b>Tim Haas</b>

<b>5. Resources Assigned:</b>							
Resource Identifier	ALS	LWD	Leader	Personnel	Request #	Hours	Reporting Location
TFLD(T) Bateman		8/26	Bateman	1	O-569	0600-2200	Rose Spike

**6. Work Assignments:**  
 Monitor the fire's edge for movement.  
 Identify areas to utilize aircraft to reduce fire spread as needed.

**7. Special Instructions:**  
 FOBS Gorsett +1 will be in the Division scouting.

<b>8. Communications</b>							
Name	Ch	Function	Rx Freq	Rx Tone	Tx Freq	Tx Tone	Notes
SEE ICS 205 COMM PLAN							

<b>9. Prepared by: Name:</b>	Kellie Stover, Amy Daniels, Rick Lancaster(T)	RESL	Signature:
ICS 204	Date/Time: 8/14/2021	2200	Personnel Count: 1

# ASSIGNMENT LIST (ICS 204 WF)

CONTROLLED UNCLASSIFIED  
INFORMATION//BASIC

<b>1. Incident Name:</b>	<b>2. Operational Period:</b>	<b>3. Branch</b>	<b>Division</b>
<b>LICK CREEK/GREEN RIDGE</b>	Date From: 08/15/21      Date To: 08/16/21 Time From: 0600              Time To: 0600		<b>NIGHT</b>
<b>4. Operations Personnel:</b>			

Operations Section Chief: <b>Shay Rogge, Brad Pietruszka (T)</b>	Planning Ops
Branch Director: <b>Troy Mueller</b>	Safety: <b>Rob Pelton, Eric White (T)</b>
Division/Group Supervisor: <b>Chris Rokosh, Jeff Corser (T)</b>	Air Attack: <b>Tim Haas</b>

5. Resources Assigned:							
Resource Identifier	ALS	LWD	Leader	Personnel	Request #	Hours	Reporting Location
TFLD(T) Best		8/28	Best	1	TBD	1800-1200	Rose Spike
ENG4 Inbound E18 GR		8/21	Navarro	3	E-161	1800-1200	Rose Spike
ENG4 AZ-IMR 2142		8/28	Best	8	E-283	1800-1200	Rose Spike
ENG5 Methow River GR		8/24	Hernandez	3	E-159	1800-1200	Rose Spike
ENG6 Osprey Wildfire GR		8/23	Roe	3	E-149	1800-1200	Rose Spike
ENG6 Wilson Farm		8/26	Wilson	3	E-274	1800-1200	Rose Spike
ENG6 Thunderbolt Fire		8/26	Hall	3	E-286	1800-1200	Rose Spike
ENG4 A1 Firestorm		8/26	Petersen	3	E-287	1800-1200	Rose Spike
WTS2 Dahl-Bredine GR		8/27	Dahl-Bredine	1	E-133	1800-1200	Rose Spike
WTS2 Black Range GR		8/28	Crockett	1	E-134	1800-1200	Rose Spike
SOF2 Medina		8/20	Medina	1	O-363.9	1800-1200	Rose Spike
SOFR(T) Eric Adams		8/21	Adams	1	O-456	1800-1200	Rose Spike

**6. Work Assignments:**  
 Patrol and improve line where needed.  
 Transfer operational needs to Day Operations.  
 Take action as needed to ensure that existing structures and infrastructures do not sustain further damage.

**7. Special Instructions:**  
 Frontline Medical (E-61) located at DP-17. Lead READ Aaron Malson: 530-917-5701  
 DIVS to identify equipment to be sent in an event of an IA within TFR. Operations will identify closest resources to respond to new incident.  
 Please make sure 3/32" fish screens are used at all draft sites in Punjab Creek, Touchet, and Tucannon Rivers.

Name	Ch	Function	Rx Freq	Rx Tone	Tx Freq	Tx Tone	Notes
SEE ICS 205 COMM PLAN							

<b>9. Prepared by: Name:</b>	Kellie Stover, Amy Daniels, Rick Lancaster(T)	RESL	Signature:
<b>ICS 204</b>	Date/Time: 8/14/2021	2200	Personnel Count: 30

# ASSIGNMENT LIST (ICS 204 WF)

CONTROLLED UNCLASSIFIED  
INFORMATION//BASIC

<b>1. Incident Name:</b>	<b>2. Operational Period:</b>	<b>3. Branch</b>	<b>Staging</b>
LICK CREEK/GREEN RIDGE	Date From: 08/15/21      Date To: 08/16/21 Time From: 0600              Time To: 0600	I	STAGING

<b>4. Operations Personnel:</b>			
Operations Section Chief: <b>Shay Rogge, Brad Pietruszka (T)</b>	Planning Ops:		
Branch Director: <b>Rodney Redinger, Jay Godson (T)</b>	Safety: <b>Rob Pelton, Eric White (T)</b>		
Base Camp Manager: <b>Shelly White</b>	Air Attack: <b>Tim Haas</b>		

5. Resources Assigned:							
Resource Identifier	ALS	LWD	Leader	Personnel	Request #	Hours	Reporting Location
DOZ3 JB Contractors		8/27	Bostwick	2	E-273	0600-2200	Rose Spike
DOZ3 Owens Freight		8/28	DeHart	2	E-292	0600-2200	Wooten Camp 5
DOZ3 Greenwood		8/28	Stewart	2	E-293	0600-2200	Wooten Camp 5
DOZ3 Owens Freight		8/28	Furtado	2	E-295	0600-2200	Wooten Camp 5
FEL1 Nash Contracting		8/27	Wilson	2	E-288	0600-2200	Rose Spike
MAST Bruce Young Logging		8/28	Young	2	E-289	0600-2200	Wooten Camp
MAST TJS		8/28	Robb	2	E-290	0600-2200	Wooten Camp

<b>6. Work Assignments:</b>
-----------------------------

<b>7. Special Instructions:</b> Shelly White (BCMG): 308-432-2978 is available at Rose Spike.
--

8. Communications							
Name	Ch	Function	Rx Freq	Rx Tone	Tx Freq	Tx Tone	Notes
SEE ICS 205 COMM PLAN							

<b>9. Prepared by: Name:</b>	Kellie Stover, Amy Daniels, Rick Lancaster(T)	RESL	Signature:	
ICS 204	Date/Time: 8/14/2021 2200			Personnel Count: 14

<b>AIR OPERATIONS SUMMARY 220</b>		Prepared By: Matt Lingenfelter	Prepared: 08/14/2020	Prepared Time: 1900
<b>1. INCIDENT NAME:</b> Green Ridge / Lick Creek	<b>2. OPERATIONAL PERIOD:</b> 8/15/2021	<b>START TIME:</b> 0730	<b>END TIME:</b> 2130	<b>SUNRISE:</b> 0546
				<b>SUNSET:</b> 2003

**3. REMARKS** (Safety Notes, Hazards, Air Operations Special Equipment, etc.).

LOCAL STATE AVIATION INFORMATION

*There are multiple HH-60 Black Hawk medical evacuation helicopters on standby in Salem, Pendleton, Yakima, and Spokane. The GACC can call and request this unique capability of being able to utilize a hoist helicopter day or night. The U.S. Army Air Ambulance Detachment throughout the state regularly supports the civil authorities of Washington with aerial medical evacuation support.*

**4. READY ALERT AIRCRAFT:**

IA: TBD  
 Medivac: 3JR @ KALW  
 Life Flight @ Walla Walla  
 3JR Short Haul @ KALW

*Order through Communications  
 See Medical Plan in the IAP*

**5. TFR: 1/4930**  
**24 Hours**  
 12,000 MSL  
 31 NM VNW of Walla Walla  
 POC Frequency 119.5250

6. PERSONNEL	NAME	PHONE #	7. FREQUENCIES	AM	FM	8A. FIXED-WING Ordering
AOBD	Carolyn Blatz	720-693-3194	A/A (TFR)	119.5250		AIRTANKERS/LEAD PLANES: ATGS order through Dispatch
AOBD (T)	Matt Lingenfelter	805-705-8621 970-294-2213	A/A (Secondary)	123.7000		8B. Aerial Supervision / Personnel / Location
ASGS	Ken Ostrom	307-272-3266	A/G (BR 1 Primary)		169.2000	AIR ATTACK Platforms: Order through Operations ATGS N400DS (Tim Haas) Lewiston, Idaho
DECK	Billy Trfon	907-294-4121	A/G (BR 2 Logistics)		167.0750	
MRB	Anthony Page	318-446-0628	A/G (BR 2 Primary)		168.2750	
ATGS	Tim Haas		VMED 28		155.3400	
HEBM	Lee Steward	775-220-6364	A/G (BR 2 Secondary)		168.5250	
Blue Mountain Interagency Dispatch	AC Desk	541-963-7171	AIRGUARD		168.6250 TX 110.9	Tucannon Mobile Retardant Base Anthony Page 318-446-0629

**9. HELICOPTERS**

FAA N#	TY	MAKE/ MODEL	BASE	START	AVAIL	REMARKS	FAA N#	TY	MAKE/ MODEL	BASE	START	AVAIL	REMARKS
359EV	3	AS 350 B3	ALW	0730	0800	EU, Initial Attack, Bucket, Recon, Cargo	187CH	1	BV CH-46	ALW	0730	0800	CWN Bucket
353JR	3	AS 350 B3	ALW	0730	0800	EU, Initial Attack, Bucket, Recon, Cargo, Short Haul	612CK	1	SH-3H	ALW	0730	0800	CWN Bucket
516LE	3	Bell 206L	ALW	0730	0800	CWN, Initial Attack, Bucket, Recon, Cargo	604CK	1	UH-60	ALW	0730	0800	CWN Bucket



10. TASK/ MISSION/ ASSIGNMENT (Type/ function includes: Air Tactical, Retardant, Recon, Personnel Transport, Bucket Operations, SAR, etc.)					
TYPE/FUNCTION	PRIORITY	NAME OF PERSONNEL OR CARGO (if applicable) or instructions for tactical aircraft	MISSION START	FLY FROM	FLY TO
ATGS		Provide coverage as smoke or weather permits.	0800	Lewiston, Idaho	Fire
Initial Attack		Support Initial Attack actions as requested.	TBD	TBD	IA
Medevac		<b>**See Medical Plan in IAP – Review during Division Breakouts**</b>	TBD	TBD	Fire
Water Drops		As needed and approved by OPS	0800	Helibase	Fire
PSD/UAS Operations		As approved in the PSD/UAS plan, where and when needed, determined by Ops.	TBD	TBD	Fire
Recon		Fire reconnaissance by Ops. Priority	0800	TBD	Fire

**Green Ridge Lick Creek Fire Costs:**

Send All Aviation Costs to: [2021.greenridge.finance@firenet.gov](mailto:2021.greenridge.finance@firenet.gov)  
[lickcreekhelibase@gmail.com](mailto:lickcreekhelibase@gmail.com) & [matt.lingenfelter@usda.gov](mailto:matt.lingenfelter@usda.gov)

Flights above ground level	Wind Restrictions		
	Type 1 Helicopters	Type 2 Helicopters	Type 3 Helicopters
More than 500' AGL	<50kts / Gusts: N/A	<50kts / Gusts: N/A	<50kts / Gusts: N/A
Less than 500' AGL	<40kts / Max Gust Spread: 15kts	<40 kts / Max Gust Spread: 15kts	<30kts / Max Gust Spread: 15kts

Controlled Unclassified Information/Basic

Approved by: //s//: Matt Lingenfelter AOB(t)

CUI

INCIDENT RADIO COMMUNICATIONS PLAN I-205		1. INCIDENT NAME	2. DATE/TIME PREPARED	3. OPERATIONAL PERIOD DATE/TIME				
		GREEN RIDGE	08/14/21	08/15/21 0600 - 08/16/21 0600				
4. BASIC RADIO CHANNEL UTILIZATION								
Ch #	Channel Name	Assignment	RX Frequency	RX Tone/NAC	TX Frequency	TX Tone/NAC	Mode Digital (D) Analog (A) Mixed (M)	Remarks
1	TAC 1	DIV M / DIV P	168.0500	151.4	168.0500	151.4	A	
2	TAC 2	DIV A / DIV NIGHT	168.6000	151.4	168.6000	151.4	A	
3	TAC 3	NORTH CONTING	166.7250	151.4	166.7250	151.4	A	
4	TAC 4	DIV G / DIV K	166.7750	151.4	166.7750	151.4	A	
5	TAC 5	LICK	168.2500	151.4	168.2500	151.4	A	
6	CMD 3	CMD 3	170.0250	131.8	165.4500	131.8	A	DIV M
7	CMD 7	CMD7	170.0000	151.4	166.6750	151.4	A	DIV A AND DIV G/K
8	CMD 8	CMD 8	170.6875	151.4	166.5750	151.4	A	DIV G/K AND DIV M
9	CMD 9	CMD 9	170.4250	151.4	168.0750	151.4	A	DIV A AND DIV G/K
10	CMD 10	CMD 10	172.0250	151.4	162.1750	151.4	A	ICP
11	CMD 67	CMD 67	172.0750	151.4	162.2000	151.4	A	DIV M / NORTH CONTINGENCY
12	CMD 11	LICK CMD 11	172.5500	131.8	169.4500	131.8	A	DIV D AND DIV M AND DIV P
13	A/G PRI		168.2750		168.2750		A	A/G PRIMARY
14	A/G SEC		168.5250		168.5250		A	A/G SECONDARY
15	VMED 28		155.3400		155.3400		A	AIR MEDICAL
16	AIRGUARD	EMERGENCY USE ONLY!	168.6250		168.6250	110.9	A	EMERGENCY USE ONLY!
ICS-205 Prepared By:		JIM MIDYETT		CLONE VERSION: GRN81521		ALWAYS POST A HUMAN REPEATER TO RELAY MESSAGES OUT OF AREAS WHERE YOU DONT HAVE ADEQUATE COMMUNICATIONS		
		DPH: PRESS & HOLD # KEY TO CHECK VERSION.		KNG: LOOK AT ZONE LABEL				

CUI



INCIDENT RADIO COMMUNICATIONS PLAN I-205		1. INCIDENT NAME		2. DATE/TIME PREPARED		3. OPERATIONAL PERIOD DATE/TIME					
		<b>Lick Creek Fire</b>		8/13/2021		08/15/21 0600 TO 08/16/21 0600					
4. BASIC RADIO CHANNEL UTILIZATION											
Ch #	Function	Channel Name	Assignment	RX Freq	NW	RX Tone/NAC	TX Freq	NW	TX Tone/NAC	Mode Analog (A) Digital (D) Mixed (M)	Remarks
1	COMMAND	CMD 1	OUT OF SERVICE		N			N		A	Removed from Service. unavailable for use.
2	COMMAND	CMD 2	COMMAND	170.4125	N	131.8	165.9625	N	131.8	A	OUT OF SERVICE
3	COMMAND	CMD 3	COMMAND	170.0250	N	131.8	165.4500	N	131.8	A	CLEARWATER LOOKOUT Linked to Green Ridge
4	COMMAND	CMD 4	OUT OF SERVICE		N			N		A	
5	TACTICAL	TAC 5	LICK BRANCH	168.0500	N	131.8	166.0500	N	131.8	A	
6	TACTICAL	TAC 6	UNASSIGNED	168.6000	N	131.8	168.6000	N	131.8	A	
7	TACTICAL	TAC 7	LICK/GREEN RIDGE	166.7250	N	131.8	166.7250	N	131.8	A	
8	TACTICAL	TAC 8	UNASSIGNED	166.7750	N	131.8	166.7750	N	131.8	A	
9	TACTICAL	TAC 9	UNASSIGNED	168.2500	N	131.8	168.2500	N	131.8	A	
10	TACTICAL	TAC 10	UNASSIGNED	168.2000	N	131.8	168.2000	N	131.8	A	
11	COMMAND	CMD 11	COMMAND	172.5500	N	131.8	169.4500	N	131.8	A	Located near DP 57
12	COMMAND	COTTWD	LOCAL RPTR	173.7750	N	131.8	164.8250	N	127.3	A	Located 18 M SE of Pomeroy
13	AIR TO GROUND	VMED28	MED A/G	155.3400	N		155.3400	N		A	Use with Air Ambulance
14	AIR TO GROUND	A/G PRI	A/G	169.2000	N		169.2000	N		A	
15											
16	AIRGUARD	AIRGUARD	AIR GUARD	168.6250	N		168.6250	N	110.9	A	Emergency Aircraft Contact
5. Special Instructions:											
6. I-205 Prepared By: Communications Unit Leader				Name: <b>JIM MIDYETT</b>				Signature: <b>JIM MIDYETT</b>			

INCIDENT RADIO COMMUNICATIONS PLAN I-205		1. INCIDENT NAME		2. DATE/TIME PREPARED		3. OPERATIONAL PERIOD DATE/TIME					
IA		IA		8/8/2021		08/15/21 0600 TO 08/16/21 0600					
4. BASIC RADIO CHANNEL UTILIZATION											
Ch #	Function	Channel Name	Assignment	RX Freq	N/W	RX Tone/NAC	TX Freq	N/W	TX Tone/NAC	Mode Analog (A) Digital (D) Mixed (M)	Remarks
1	COMMAND	ST ASOTIN	LOCAL RPTR	159.4200	N	D365	151.2950	N	D365	A	6 Miles W of Anatone
2	COMMAND	COTTNWD	LOCAL RPTR	173.7750	N	131.8	164.8250	N	127.3	A	18 Miles SE of Pomeroy
3	COMMAND	SADDLE	LOCAL RPTR	173.7750	N	131.8	164.8250	N	146.2	A	29 Miles SE of Pomeroy
4	COMMAND	OREGON	LOCAL RPTR	173.7750	N	131.8	164.8250	N	167.9	A	25 Miles S of Pomeroy
5	COMMAND	DIAMOND	LOCAL RPTR	173.7750	N	131.8	164.8250	N	151.4	A	
6	TACTICAL	COM	DNR TACTICAL	151.4150	N	103.5	151.4150	N	103.5	A	
7	TACTICAL	TAC 1	DNR TACTICAL	151.3100	N	103.5	151.3100	N	103.5	A	
8	TACTICAL	TAC 2	DNR TACTICAL	151.3400	N	103.5	151.3400	N	103.5	A	
9	TACTICAL	TAC 3	DNR TACTICAL	151.3500	N	103.5	151.3500	N	103.5	A	
10	TACTICAL	REDNET	TACTICAL	153.8300	N		153.8300	N		A	
11	TACTICAL	UMF-TAC	TACTICAL	168.2375	N	131.8		N	131.8	A	
12	AIR TO GROUND	A/G 1	LOCAL A/G	159.2700	N	103.5	159.2700	N	103.5	A	
13	AIR TO GROUND	A/G 9	LOCAL A/G	166.9125	N		166.9125	N		A	
14	AIR TO GROUND	A/G 44	LOCAL A/G	167.6250	N		167.6250	N		A	
15	AIR TO GROUND	VMED28	MEDICAL A/G	155.3400	N		155.3400	N		A	
16	AIRGUARD	AIR GUARD	AIR GUARD	168.6250	N		168.6250	N	110.9	A	Emergency Aircraft Contact
5. Special Instructions:											
6. I-205 Prepared By: Communications Unit Leader						Name: JIM MIDYETT			Signature: JIM MIDYETT		

# Green Ridge Fire Human Resource Message

## Your Rights To Work in a Harassment-Free Work Environment

- All employees have the right to work in a harassment-free environment where people treat one another with dignity and respect.
- A harassment-free work environment assists in providing a safe and productive work environment.



Please feel free to contact me... I have set up shop and am here to help anyway I can.

**Mike Baines, Human Resource Specialist**  
**724-678-6147**

# TEAM BLACK FINANCE PROCEDURES

**\*\*Green Ridge, Lick Creek, and Dry Gulch Fires\*\***

We are using a 100% electronic time submission process. Please submit time daily.  
**PLEASE REPORT TIME BASED ON THE FIRE YOU WORKED ON.**

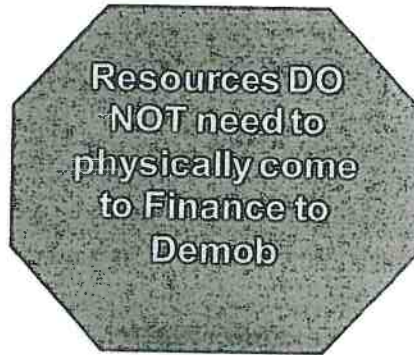
---

Resources just checking in: After checking in using the QR Code on the front of an IAP, please continue to the Finance portion and complete the Finance Check-In Form. Don't forget to submit the appropriate forms/documents electronically.

E-mail time to: [2021.greenridge.finance@firenet.gov](mailto:2021.greenridge.finance@firenet.gov)

Please include resource type (**OVERHEAD, EQUIPMENT OR CREW**) in subject line. Please send electronic documents OR pictures.

If you are sending other information or questions to the finance email, please send separate email with appropriate subject line, ie: "Question on time" or "Explanation of travel."



**To electronically demob from finance:** Submit final CTRs and Shift Tickets to the above finance email. Include your email address and phone number. Make sure CTRs/Shift Tickets are complete and legible. **Once you have turned in your final CTRs/Shift Tickets you are released from Finance.** A final timesheet (OF288) and/or Invoice (OF286) will be emailed to you for review. Please respond with a confirmation email of accuracy. If there are errors or edits needed, contact-46 finance asap by replying to the email.

*Travel safely home without having to deal with finance in person!*

If you are unable to send electronic CTRs/Shift Tickets due to lack of connectivity, or incompatible devices, hard copies will be accepted. Coordinate with your supervisor for delivery to Finance. **BE SURE TO INCLUDE PHONE NUMBER AND EMAIL ADDRESS.** When you are ready to demob, call one of the Finance numbers below.

If you have any questions, please contact us at:  
**Finance 971-245-0248 or 971-727-7461; Comp/Claims 541-969-2396**

# Demob Tips

**\*\*\*Note: If you have cell phone coverage and have nothing to return to Communications or Supply, you will not physically need to come to demob.\*\*\***

AIR TRAVELERS please contact or stop by demob 4 days prior to your demob date to confirm travel plans.

## **After being notified by your supervisor of your tentative release date:**

1. Return all supplies, radios, etc. that were checked out. If you have no items to return, you can complete finance and demob virtually. All line vehicles must complete a WEED WASH and have a post-inspection of their vehicles.
2. Submit time for all personnel and equipment to Finance per directions in IAP.
3. Once you receive confirmation from FINANCE with a copy of your OF-288 and other financial documentation, you are free to complete Step 4 and travel home.
4. Complete demob Checkout Sheet using QR code on the cover of the IAP. If unable to use, see demob. Once demob receives confirmation from Finance and your demob checkout sheet has been electronically submitted, you will be released in the system.

Demob Unit email: 2021.greenridge.demob@firenet.gov (970) 217-6479

\*\*\*\*\*

## **Training Specialist Message/Training Process**

You do not have to wait until the last work day to complete a position task book (PTB) evaluation. You can complete the evaluation process at any time on the incident. Trainees are not required to check in with the Incident Training Specialist (TNSP). However, Geographic Area Priority Trainee Program participants are strongly encouraged to check in with the TNSP. The TNSP is available to answer questions and/or help guide both the Trainee and Evaluator through the process.

1. Incident trainees should check in early with the TNSP either in person or remotely using the QR code on the IAP cover. Within that QR code exists a training portal.
2. The trainee needs to take ownership of their training assignment. Working closely with their evaluator, identify tasks and learning opportunities that can be documented in their PTB.
3. Ensure all the information is complete and correct on the Evaluation Record and, if being recommended for certification, the PTB Verification/Certification form. Incorrect or incomplete information is a very common issue in PTBs and, all too often, delays certification of a trainee as fully qualified. Please review all information to make sure it is complete, accurate, and legible.
4. The evaluator should complete an Incident Personnel Performance Rating (ICS 225 WF) for the trainee, and submit a copy to the TNSP either in person or a picture copy.
5. Once all the documentation is completed, the trainee will need to close out with the TNSP. The trainee can: 1) stop by and close out in person with TNSP; 2) call the TNSP to go through the Exit Interview Form and discuss how the assignment went; or 3) complete the Exit Interview Form through the QR code link.

Incident Training Specialist email: 2021.greenridge.plans@firenet.gov

# TENTATIVE RELEASE DATES & TIMES

## 08/15/2021

### CREWS

C-70 2200 (CC) SRV YOUTH CAMP CREW (SRV)

### EQUIPMENT

E-111 0700 (ENG6) ROCK CREEK  
E-161 0700 (ENG4) ENGINE - T4 - INBOUND, E18  
E-177 0700 (DOZ3) DOZER - T3 - TRAVERSE LLC –  
E-134 0730 (WTS2) TENDER, WATER (SUPPORT) –  
E-171 0730 (WTS2) TENDER, WATER (SUPPORT) –  
E-169 0800 (WTS2) TENDER, WATER (SUPPORT) –  
E-174 0800 (WTS2) TENDER, WATER (SUPPORT) –

### OVERHEAD

O-300 0700 (STEN) CWIAK, JAY A  
O-336 0700 (HECM) WEBLEY, MICHAEL CLINT  
O-178 0700 (IMET) WISTER, MARY  
O-237 1700 (FOBS) AHO, TRAVIS

## 08/16/2021

### EQUIPMENT

E-85 0700 (DOZ3) BRUCE YOUNG LOGGING GR  
E-173 0730 (WTS2) TENDER, WATER (SUPPORT) –  
E-70 0800 (MAST) EAGLE CAP FORESTRY GR  
E-107 0800 (MAST) TUCANNON OUTFITTERS  
E-164 0800 (ENG4) ENGINE - T4 - ALDER CREEK  
E-178 0800 (DOZ3) DOZER - T3 - KISER & KISER  
E-179 0800 (DOZ3) DOZER - T3 - KISER & KISER  
E-48 0700 (WTS2) MVP TEAM DG  
E-49 0800 (WTS2) UPPER VALLEY EXCAVATING  
E-59 0800 (AMBU) FIRELINE MEDICS DG

### OVERHEAD

O-335 0700 (THSP) SCHRAMLING, RYAN  
O-358 0900 (THSP) WRIGHT, BRIAN  
O-269 1700 (HECM) PADILLA, JEREMY

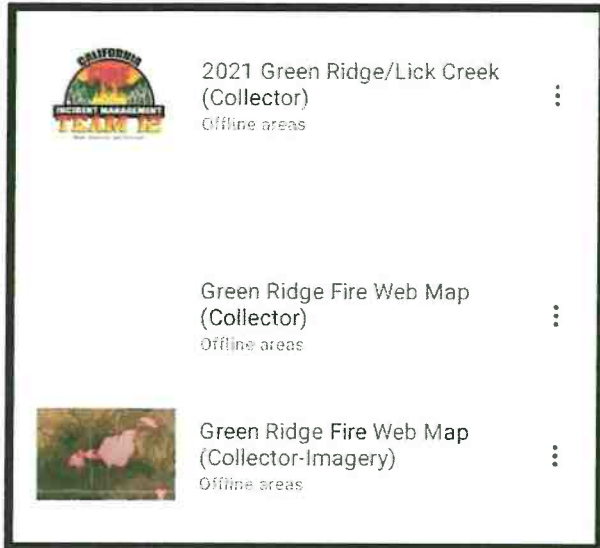


# !!IMPORTANT!



## Collector Update, Please Read and Heed!!

**ASAP:** Please SYNC and REMOVE Offline areas for the following maps:



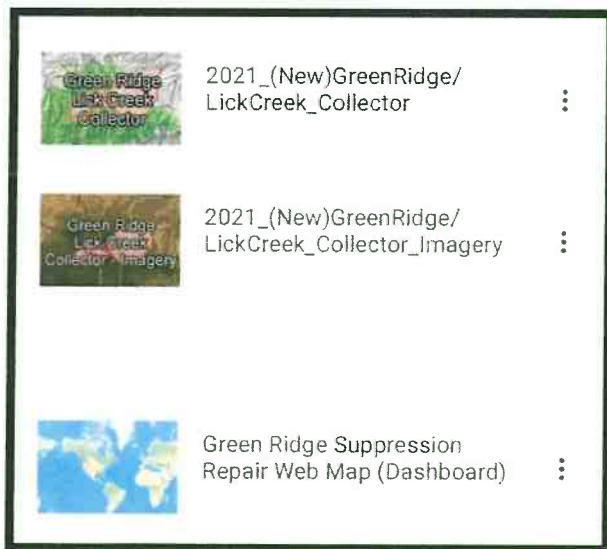
← These 3 maps will be **DISCONTINUED** and **REMOVED FROM USE** starting **Saturday Morning 8/14**.

Don't let your collected data get lost! Sync and Remove your Offline areas for these maps now! **DO NOT** Continue to use these maps!!!

**\*\*Discontinued Maps:**

- 2021 Green Ridge/Lick Creek (Collector)
- Green Ridge Fire Web Map (Collector)
- Green Ridge Fire Web Map (Collector – Imagery)

**Going Forward:** Please download new offline areas and use these collector maps:



**\*\* New Maps:**

- 2021\_(New)GreenRidge/LickCreek\_Collector**
- 2021\_(New)GreenRidge/LickCreek\_Collector\_Imagery**
- Green Ridge Suppression Repair Web Map (Dashboard) continues to be in use

Improvements of these maps:

- No pre-defined offline area, choose your own
- Structure Triage features can be collected and edited

These Maps are in the RM Black Mobile Editing Group, email [2021.GreenRidge.situation@firenet.gov](mailto:2021.GreenRidge.situation@firenet.gov)



RM Black - Mobile Editing  
6 Maps



**SURVEY 123** – Structure Triage Green Ridge and Lick Creek Now Available!!! Scan the QR code to find it easily

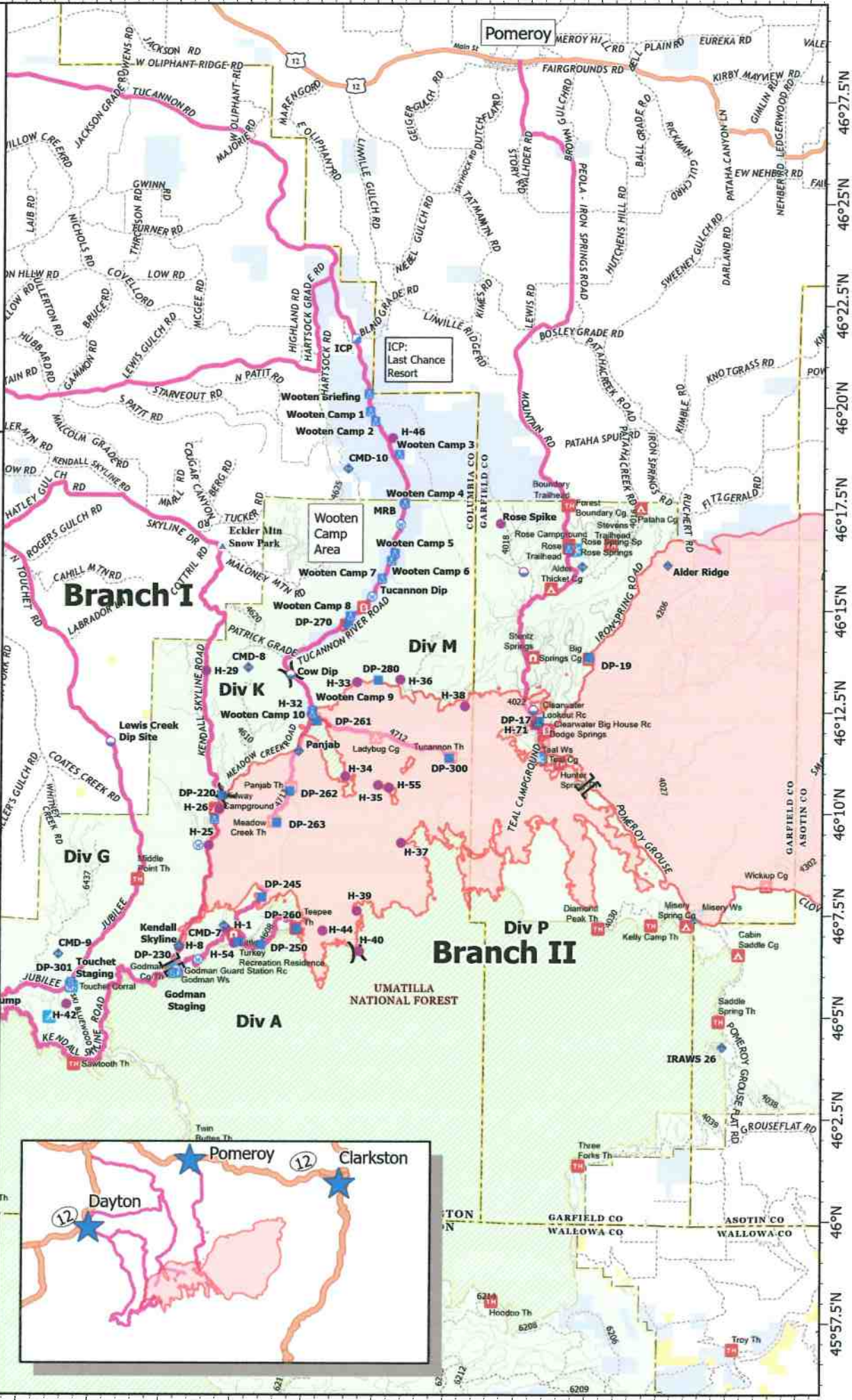


# Transportation Map



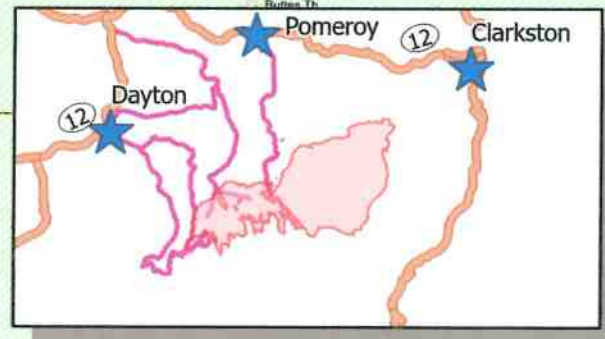
Green Ridge  
OR-UMF-000659  
8/15/2021 24hr  
32,298 acres at  
8/13/2021@2348

- Wildfire Daily Fire Perimeter
- Dip Site
- Mobile Retardant Base
- Helispot
- Division Break
- Branch Break
- Incident Command Post
- Drop Point
- Camp
- Staging Area
- Mobile Weather Unit
- Repeater
- Water Source
- U.S. Forest Service
- Bureau of Land Management
- State Land
- Other Land, Including Private
- Wilderness
- Secondary Hwy
- Local Road
- 4WD



8/14/2021 2002

North American 1983 Datum.







# Rocky Mountain IMT Black



## Line Supply Order

Date & Time Order was Placed	Order # (BR+DIVS + #)	Location & Time for Delivery (Division/LZ/DP/Lat Long)	Mode of delivery (Driven/Helo/DIVS to Pick up)

Order received in Communications by (name & time):

Order received in Supply by (name & time):

Order received in Transportation by (name & time):

Order received in Helibase by (name & time):

Order shipped to line unit by (name & time): (Send this sheet to the line with the order)

#	Item	Amount	Item	Amount
1.	Meals, Breakfasts	ea	30. Slingable Blivet	ea
2.	Meals, Lunches	ea	31. Folding Tank, specify size	ea
3.	Meals, Dinners	ea	32. Lightweight Pump Kit (Cache)	ea
4.	Meals, MRE's	cs	33. Hose, 1 1/2"	ea
5.	Water, 5 gal. cubie	ea	34. Hose, 1"	ea
6.	Batteries- AA	1-Flat	35. Hose, 3/4"	ea
7.	Batteries, Specify Type	pk	36. Reducer, 1 1/2" x 1"	ea
8.	Flagging, Specify type	roll	37. Reducer, 1" x 3/4"	ea
9.	Gas, raw	gal	38. Gated "Y", 1 1/2"	ea
10.	Bar Oil	gal	39. Gated "Y", 1"	ea
11.	2- cycle oil, chainsaw (2.5 oz)	6 pk	40. Gated "Y" 3/4 "	ea
12.	Sleeping Bags	ea	41. Shut-off Valve, "	ea
13.	Gatorade	cs	42. In-line Tee, 1 1/2" x 1"	ea
14.	Tarps / Plastic	roll	43. Nozzle, 1 1/2"	ea
15.	Parachute Cord	roll	44. Nozzle, 1"	ea
16.	Tool, Shovel	ea	45. Nozzle, 3/4"	ea
17.	Too I, Pulaski	ea	46. 20 Man First Aid Kit	ea
18.	Tool, Combi	ea	47. Chainsaw Kit	ea
19.	Tool, McLeod	ea	48. Toilet Paper (96 per case)	cs
20.	Tool, Specify Type	ea	49. 1000 ft. Hose Lay Kit	ea
21.	Fusee	cs	50. Garbage Bags	bx
22.	Drip Torch	ea	51. Leadline	ea
23.	Drip Torch Mix, 5 gal.	ea	52. Spike Supply Kit	ea
24.	Coffee Kit w/propane	ea	53. Dolmar (6 per case)	ea
25.	Swivel	ea	54. Sprinkler Kit	ea
26.	Backpack Pump	ea	55. LINE Spike Supply Kit	ea
27.	Pumpkin, specify size	ea	56. Duct Tape	roll
28.	Mark 3 Pump Kit w/fuel	ea	57. House Wrap	roll
29.	2-cycle oil, high pressure pump	qt	58. Staple Gun w/ staples	ea

**Team Ordering/Timeline Process:**

- 0630 - Morning Briefing, start of crew time.  
 1100 - Last call to change spike camp resource hot food location.  
 1600 - DIVS to have next day's resource order ready for Planning OPS.
- All crew level orders will be placed through DIVS or Branch.
  - DIVS or Branch will place all orders through Communications Unit.
  - All orders will be tracked using the process found on the front of this form.

**GPS Datum: NAD 83- Degrees, Decimal, Minutes (DDMM.MM)**

**Definitions**

- FOB**-Forward Operating Base is a secure forward position established to strategize, design and discuss tactics, and for personnel to transfer information and meet.  
**Line Spike Camp**-Managed by Operations at the DIVS level; mobile, short duration and self- sufficient.  
**Spike Camp**-Supported by Logistics, listed in the IAP, numbers in camp are set by 1100, named by Plans.  
**Emergency Medevac**- Life threatening situation requiring immediate medical attention. Handled as per IAP med plan and team SOP's. Communications to clear command channel radio traffic.  
**Medical Transport**-Transport of less serious injury/illness managed by Operations or line Medics back to camp for evaluation and/or treatment.

1000 ft. Hose Lay Kit (Order as "#49")				Spike Supply Kit (Order as "#52")			
Quantity	NFES#	Item	Weight	Quantity	NFES#	Item	Weight
10 ea	1239	Hose 1½"	125 lbs	2 rolls	0071	Duct Tape	4 lbs
10 ea	1238	Hose 1"	84 lbs	4 rolls	0222	Fiber Tape	2lbs
20 ea	1016	Hose ¾"	25 lbs	1 case	0021	Trash Bags	21 lbs
5 ea	0231	1½" Gated "Y"	20 lbs	1 case	0465	Cups for hot liquid	18 lbs
5 ea	0259	1" Gated "Y"	13 lbs	2 ea	0070	16x24 Tent fly	40 lbs
10 ea	0904	¾" Gated "Y"	3 lbs	3 ea	0027	Water Wash Basins	2 lbs
5 ea	0010	Reducers 1½" - 1"	3 lbs	1 case		Liquid Hand Soap / pump	10 lbs
5 ea	0733	Reducers 1" - ¾"	2 lbs	18 cases	1842	MRE's	18 x 20= 360 lbs
10 ea	0738 or 0835	Ball Valve ¾"	5 lbs	48 ea	0022	Sleeping bags (dbl. bag)	48 x 5= 240 lbs
10 ea	0138	Nozzle, 1"	5 lbs	3 cases	0030	AA Batteries, 24 pkg./case	90 lbs
10 ea	0136	Nozzle ¾"	5 lbs	1 case	0240	Paper Towels	41 lbs
5 ea	0230	Tee 1½x1½x1" /valve	5 lbs	1 case	0142	Toilet Paper	44 lbs
LINE Spike Supply Kit (Order as "#55")				1 roll	0144	Plastic sheeting	45 lbs
				1 roll	0533	P-Cord	9 lbs
Quantity	NFES#	Item	Weight	20 ea	7443	Cubies, 5 gal. Full Potable Water	20 x 40= 800 lbs
20-0H	0022	Sleeping bags	20 x 5= 100 lbs	1 box	1059	12" Bastard Files	9lbs
20 ea	7443	Cubies, 5 gal Full	20x40= 800 lbs	1 ea	3444	2-cycle mix, chainsaw (6 pk 2.5 oz)	2lbs
18 cases	1842	MRE's	18x20=360 lbs	8 gal	1880	Bar Oil	64 lbs
1 sl	0533	P-Cord	9 lbs	15 gal		Regular Gas	120 lbs
3 cases	0030	AA Batteries, 24 pkg./case	90 lbs	1 can		3 lbs. can coffee	3 lbs
1 case	0021	Trash bags	21 lbs	1 ea		2 1/2 gal coffee pot or 3-1 gal	10 lbs
10 rolls	0142	Toilet paper	3 lbs	2ea	0089	Ridge pole	46 lbs
1 roll	0144	Plastic sheeting	45 lbs	12 ea	0083	Pole upright	89 lbs
2 rolls	0222	Fiber Tape	2 lbs	24 ea	0825	Stake Tent	24 lbs
1 ea	3444	2-cycle mix, chain-saw (6 pk 2.5 oz)	2 lbs				
4 gal	1880	Bar Oil	32 lbs				
15 gal		Regular Gas	120 lbs				
1 box	1059	12" Bastard Files	9 lbs				

# COVID GUIDELINES



NWCG screening Tool

## **MASKS ARE REQUIRED:**

BRIEFINGS.

CAN'T MAINTAIN 6FT SOCIAL DISTANCING OUTSIDE.

INDOORS.

VEHICLES. (Example: More than one person in vehicle)

## **MASK WEARING EXCEPTION:**

ALONE IN AN ENCLOSED SPACE. (Example: One person in Vehicle)

ACTIVELY ENGAGED IN FIREFIGHTING ON THE FIRELINE.

OUTSIDE AND CAN MAINTAIN 6FT APART.

EATING OR DRINKING (6FT SOCIAL DISTANCE)

PLEASE CONTACT THE GREEN RIDGE COVID  
HOTLINE IF YOU HAVE ANY QUESTIONS ABOUT COVID, SYMPTOMS,  
AND OR FREE TESTING.

**GREEN RIDGE COVID HOTLINE # 971-245-9407**

## INCIDENT FREE COVID TESTING

1. Test is 100% voluntary. **"HIGHLY RECOMMENDED"**
2. The email address below goes straight to the COVID Task Force and is **HIPPA** (Health Insurance Portability and Accountability Act) Compliant. Also, any phone calls or texts to the COVID Hotline is following HIPPA.
3. Please email: **2021.lick.plans@firenet.gov** or call COVID Hotline: **971-245-9407** to schedule your test.
4. We can test you at ICP or Wooten.
6. The test only takes 30 minutes to get results.
7. Please check with your employer or agency if they want you to test before you Demob.
8. Try to let us know 3-days before your demob day so that we can make it as quick as possible.

# MEDICAL PLAN (ICS 206 WF)

Controlled Unclassified Information//Basic

<b>1. Incident/Project Name</b>	<b>2. Operational Period</b>
<b>Lick Creek/Green Ridge Fires</b>	<b>08/15/2021 (06:00) - 08/16/2021 (06:00)</b>

3. Ambulance Services				
Name	Location	Phone/Frequency	Advanced Life Support (ALS)	
			Yes	No
Columbia County Fire District #3	111 Patit Road, Dayton, WA 99328	Dial 911		X
Lewiston Fire Department	1245 Idaho Street, Lewiston, ID 83501	Dial 911	X	

4. Air Ambulance Services		
Name	Phone/Freq	Type of Aircraft & Capability
Lifelight - Lewiston	800-232-0911	Bell 407 – ALS, Night Vision
Lifelight - Walla Walla	800-232-0911	AW 119 – ALS, Night Vision
Walla Walla	Contact Air Ops	AS-350B3 - Short Haul

5. Hospitals								
Name Complete Address	GPS Datum – WGS 84 DD° Degrees Minutes Seconds		Travel Time		Phone	Helipad		Level of Care Facility
St. Mary Medical Center 401 West Poplar Street Walla Walla, WA 99362	Lat:	46° 03' 40" N	1 hr*	20 min*	509-897-2500	X		Level 3
	Long:	118° 20' 31" W						
	VHF:							
St. Joseph Regional Medical Cntr 415 6 <sup>th</sup> Street Lewiston, ID 83501	Lat:	46° 25' 00" N	1 hr*	20 min*	208-799-5799	X		Level 3
	Long:	117° 01' 26" W						
	VHF:							
Sacred Heart Medical Center 101 W 8 <sup>th</sup> Avenue Spokane, WA 99204	Lat:	47° 38' 56" N	2 hr*	30 min*	509-474-3342	X		Level 2 Trauma Center
	Long:	117° 24' 46" W						
	VHF:							
Legacy Emanuel Medical Center 2801 North Gantenbein Avenue Portland, OR 97227	Lat:	45° 32' 40" N	5 hr*	2.5 hr*	503-494-7333	X		Level 1 Trauma Center Burn Center
	Long:	122° 40' 17" W						
	VHF:							

\*Travel times are from the Incident Command Post in Wooten Wildlife Area Headquarters and DO NOT include response time to the incident.

6. Division   Branch   Group			
<b>Div A</b>	EMS Responders & Capability:	EMPF Waggoner/Forsythe	
	Equipment Available on Scene:	ALS, AED, Stokes Litter, SKED, UTV	
	Medical Emergency Channel:	TAC 2	
<b>Div G/K</b>	EMS Responders & Capability:	Ambulance 5, EMTF Holborn, EMTF Merrell	
	Equipment Available on Scene:	ALS, BLS, AED, Cardiac Monitor, Stokes Litter, SKED, UTV	
	Medical Emergency Channel:	TAC 4	
<b>Div M</b>	EMS Responders & Capability:	Ambulance 6, REMS 10, EMPF Clark, EMTF Jonassen	
	Equipment Available on Scene:	ALS, BLS, AED, Cardiac Monitor, Stokes Litter, SKED, UTV	
	Medical Emergency Channel:	TAC 1	
<b>ICP</b>	EMS Responders & Capability:	Ambulance 7	
	Equipment Available on Scene:	BLS, AED	
	Medical Emergency Channel:	Command	
<b>Nights</b>	EMS Responders & Capability:	Ambulance 4	
	Equipment Available on Scene:	ALS, Cardiac Monitor	
	Medical Emergency Channel:	TAC 6	
	EMS Responders & Capability:		
	Equipment Available on Scene:		
	Medical Emergency Channel:		
	EMS Responders & Capability:		
	Equipment Available on Scene:		
	Medical Emergency Channel:		

7. Prepared By (Medical Unit Leader)	8. Date/Time	9. Reviewed By (Safety Officer)	10. Date/Time
<b>Stephanie McGovern, MEDL(t)</b>	<b>08-14-2021 (20:00)</b>	<b>Rob Pelton, SOF2</b>	<b>08-14-2021 (20:00)</b>

# MEDICAL PLAN (ICS 206 WF)

Controlled Unclassified Information//Basic

## Medical Incident Report

**FOR A NON-EMERGENCY INCIDENT, WORK THROUGH CHAIN OF COMMAND TO REPORT AND TRANSPORT INJURED PERSONNEL AS NECESSARY.**

**FOR A MEDICAL EMERGENCY: IDENTIFY ON SCENE INCIDENT COMMANDER BY NAME AND POSITION AND ANNOUNCE "MEDICAL EMERGENCY" TO INITIATE RESPONSE FROM IMT COMMUNICATIONS/DISPATCH.**

**Use the following items to communicate situation to communications/dispatch.**

**1. CONTACT COMMUNICATIONS / DISPATCH (Verify correct frequency prior to starting report)**

*Ex: "Communications, Div. Alpha. Stand-by for Emergency Traffic."*

**2. INCIDENT STATUS: Provide incident summary (including number of patients) and command structure.**

*Ex: "Communications, I have a Red priority patient, unconscious, struck by a falling tree. Requesting air ambulance to Forest Road 1 at (Lat./Long.) This will be the Trout Meadow Medical, IC is TFLD Jones. EMT Smith is providing medical care."*

Severity of Emergency / Transport Priority	<input type="checkbox"/> <b>RED / PRIORITY 1 Life or limb threatening injury or illness. Evacuation need is IMMEDIATE</b> <i>Ex: Unconscious, difficulty breathing, bleeding severely, 2° - 3° burns more than 4 palm sizes, heat stroke, disoriented.</i> <input type="checkbox"/> <b>YELLOW / PRIORITY 2 Serious injury or illness. Evacuation may be DELAYED if necessary.</b> <i>Ex: Significant trauma, unable to walk, 2° - 3° burns not more than 1-3 palm sizes.</i> <input type="checkbox"/> <b>GREEN / PRIORITY 3 Minor injury or illness. Non-Emergency transport</b> <i>Ex: Sprains, strains, minor heat-related illness.</i>	
Nature of Injury or Illness & Mechanism of Injury		Brief Summary of Injury or Illness <i>(Ex: Unconscious, Struck by Falling Tree)</i>
Transport Request		Air Ambulance / Short Haul/Hoist Ground Ambulance / Other
Patient Location		Descriptive Location & Lat. / Long. (WGS84)
Incident Name		Geographic Name + "Medical" <i>(Ex: Trout Meadow Medical)</i>
On-Scene Incident Commander		Name of on-scene IC of Incident within an Incident <i>(Ex: TFLD Jones)</i>
Patient Care		Name of Care Provider <i>(Ex: EMT Smith)</i>

**3. INITIAL PATIENT ASSESSMENT: Complete this section for each patient as applicable (start with the most severe patient)**

Patient Assessment: See IRPG page 106

Treatment:

**4. TRANSPORT PLAN:**

Evacuation Location (if different): (Descriptive Location (drop point, intersection, etc.) or Lat. / Long.) Patient's ETA to Evacuation Location:

Helispot / Extraction Site Size and Hazards:

**5. ADDITIONAL RESOURCES / EQUIPMENT NEEDS:**

*Example: Paramedic/EMT, Crews, Immobilization Devices, AED, Oxygen, Trauma Bag, IV/Fluid(s), Splints, Rope rescue, Wheeled litter, HAZMAT, Extrication*

**6. COMMUNICATIONS: Identify State Air/Ground EMS Frequencies and Hospital Contacts as applicable**

Function	Channel Name/Number	Receive (RX)	Tone/NAC *	Transmit (TX)	Tone/NAC *
COMMAND					
AIR-TO-GRND					
TACTICAL					

**7. CONTINGENCY: Considerations: If primary options fail, what actions can be implemented in conjunction with primary evacuation method? Be thinking ahead.**

**8. ADDITIONAL INFORMATION: Updates/Changes, etc.**

**REMEMBER: Confirm ETA's of resources ordered. Act according to your level of training. Be Alert. Keep Calm. Think Clearly. Act Decisively.**

