

Lick Creek – Green Ridge Fires

OR-UMF-000658 / OR-UMF-000659

P6N5AV (0614)

Send TIME to: 2021.greenridge.finance@firenet.gov

Wednesday, August 18, 2021 – Thursday, August 19, 2021

Operational Period 0600-0600



Rocky Mountain IMT2 Black

Troy Hagan, ICT2 — Bill Waln, Deputy ICT2

Public Fire Information
2021.greenridge@firenet.gov

IAP/Map/Demob/Check-in/Etc



<https://tinyurl.com/jtb3wzk6>

**Communications 24-Hour
Emergency Number:
971-727-7965**

1. Incident Name:
Lick Creek / Green Ridge

2. Operational
Period:

Date From: **08.18.2021** Date To: **08.19.2021**
Time From: **0600** Time To: **0600**

3. Objective(s):

- Provide for the safety of firefighters and the public through the utilization of strategic and deliberate risk assessment processes. Ensure incident within an incident (IWI) protocols are established.
- Develop and implement strategies and tactics with the highest probability of success to protect identified values at risk.
- Maintain and enhance relationships, through timely communication, actively engaging the Agency Administrators, the public, and stakeholders.
- Coordinate with the READs to ensure natural and historical values are identified and protected.
- Assist with initial attack as requested, when it will not impede meeting of incident objectives.
- Manage the incident following established COVID-19 mitigation guidelines limiting spread of infectious diseases.

4. Safety

NORMALIZATION OF DEVIANCE (RISK)

The normalization of deviance is defined as: "The gradual process through which unacceptable practice or standards become acceptable. As the deviant behavior is repeated without catastrophic results, it becomes the social norm for the organization."

Firefighters encounter hazards on every shift of every fire. From snags to stump holes, and air ops to rolling rocks, we are surrounded by hazards every day. Have you ever recognized in yourself that you no longer even glance upwards as the helicopter flies over you yet again on its way to the dip site? — You have normalized the risk!

It takes a conscious effort and continuous thought to avoid this. Train and re-train the proper way to do things so it becomes rote memory when the stress is high or when your mind begins to wander.

COMPLACENCY

Defined= A feeling of being satisfied and not wanting to make it better.

- Your goal is to NEVER be satisfied with your safety.
- Look up, look down, and look all around to maintain your awareness.
- **Keep your edge by asking these 3 questions:**
 1. What could go wrong?
 2. What more can I do to ensure our safety?
 3. What may I be unaware of that could compromise our safety?

5. Prepared by PSC2:

Name: Rocco Smart

Signature: Rocco Smart

6. Approved by Incident Commander:

Name: Troy Hagan

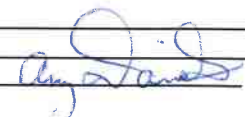
Signature: _____

ICS 202

IAP Page **2**

Date/Time: Date: 08/17/2021 | 2000 hours

ORGANIZATION ASSIGNMENT LIST (ICS 203)

1. Incident Name: LICK CREEK/GREEN RIDGE		2. Operational Period: Date From: 8/18/2021		Date To: 8/19/2021	
		Time From: 0600		Time To: 0600	
3. Incident Commander(s) and Command Staff:			7. Operation Section:		
IC	Troy Hagan	Operations Chief	Shay Rogge, Brad Pietruszka (T)		
Deputy	Bill Waln	Planning Ops			
Safety Officer	Rob Pelton, Pat Medina, Eric White (T), Eric Adams (T)				
Medical	Jeff Basamanowicz, Stephanie McGovern (T)		Branch I	Rodney Redinger, Jay Godson (T)	
Information Officer	Dawn Sanchez, Brant Porter, Olivia Bruce (T)	Division/Group	K	Nate Kerschner, Isaiah Jimenez (T)	
Liaison Officer	Sam Carle, Mark Neely (V)	Division/Group	M	Brandon Bonenberger, Daniel Kamakani (T)	
Human Resource Specialist	Mike Baines	Division/Group	LICK	Jon Stonelake, Neal McCann (T)	
4. Agency/Organization Representatives:		Division/Group	NORTH	Unstaffed	
USFS AADM	Kelly Lawrence		STAGING	Shelly White	
USFS AREP	Susan Piper				
WA DNR	Wyatt Leighton, Tom Schoenfelder		Branch II	Matt Norden, Deon Steinle (T)	
Asotin Co Fire Dist 1	Noel Hardin				
Columbia Co Fire 3	Jeromy Phinney	Division/Group	P	Ian Barrett, Aaron Woodham (T)	
Garfield Co Fire Dist 1	James Cleveland	Division/Group	S	Tom Kenny, Brad Bryant (T)	
WFS	Devin McCosh	Division/Group	W	Unstaffed	
WDFW - LEO	Paul Mosman	Division/Group	STRUCTURE	Joe Tjaden	
COVID Liaison	Cass Monroe, Steve Medina	Division/Group	EAST CONTINGENCY	Nick Collard, David Collins (T)	
5. Planning Section:					
Chief	Rocco Snart, Heather Gonzalez, Peter Barth		NIGHT	Troy Mueller	
Resource Unit	Kellie Stover, Amy Daniels, Rick Lancaster (T)	Division/Group	NIGHT	Chris Rokosh, Jeff Corser (T)	
8. Air Operations Branch					
Situation Unit	Tara Umphries, Kristen Marshall (T), Brenda Wasielewski (T)	Air Operations Branch Director	Carolyn Blatz, Matt Lingenfelter (T)		
		Air Support Group Supervisor	Ken Ostrom		
Demobilization Unit	Dave Farmer	Air Tactical Group Supervisor	Tim Haas		
Incident Meteorologist	Matt Jeglum	Helibase Manager	Lee Steward		
Status Check-In	Rose Long				
Fire Behavior	Larry Long	9. Finance/Administration Section:			
Documentation Unit	Spencer Pollock (V)	Chief	Mavis Biastoch, Patty Wyatt		
GIS Specialist	Sarlyn McCormick, Jean Olson, Faith Dziedzic, Sarah Strehle (T)	Time Unit	Kayla Clark		
		Cost Unit	Kristie Bowen (T)		
Strategic Planner		Compensation Unit	Pearl Cowan		
Long Term Analyst	Dan Bartel (V), Kirk Will (T)				
Training Specialist	Steve Ellis (V), Wendy Fischer (T)				
6. Logistics Section					
Chief	Wally Leander, Randy Spiering, Darin Gehring				
Ground Support Unit	Jamie Rietz				
Communications	Jim Midyett				
Facilities - ICP	Monty Bollock, Ken Hehr, D. Brown				
Facilities - Rose Spike	Mike Kinne				
IT Specialist	Kevin Watts, Jason Reynolds (T)				
Supply Unit	Robin Brooks, Nate Haynes (T)				
Food Unit	Clyde Leggins				
Security	Darrell Hanson, Clyde Harris (T)				
Prepared By: Name: Amy Daniels Position/Title: RESL Signature: 					
ICS 203		Date/Time: 8/17/2021 2100 hours			



Lick Creek / Green Ridge Weather Forecast



FORECAST NO: 38
FORECAST FOR: Tuesday Operational Period
SHIFT DATE: 8/18/2021
DATE AND TIME ISSUED: 8/17/2021 at 1900 PDT

NAME OF FIRE: Lick Creek/Green Ridge
UNIT: OR-UMF
SIGNED: Matt Jeglum - Incident Meteorologist
503-704-9955

...Cool with rain possible...

WEATHER DISCUSSION: Cool and damp conditions will continue Wednesday. There is a 70% chance of rain and a 45% chance of a wetting rain. Winds should be noticeably more mellow on Wednesday compared to previous days with afternoon gusts only around 15 mph. By 2100 Wednesday the threat of rain will have passed. Thursday will be drier and slightly warmer than Wednesday with continued light winds. Late Friday into Saturday will bring another threat of rain.

TODAY:

WEATHER: Cloudy and cool. 70% chance of rain. Skies clearing in the evening
MAXIMUM TEMPERATURE: 55-60° above 5000 feet. 67-73° valley bottoms.
MINIMUM RELATIVE HUMIDITY: 56-62% above 5000 feet. 38-44% valley bottoms.
20-FOOT RIDGETOP WINDS: Northwest 5-10 mph with gusts up to 17 mph.
GREEN RIDGE CREEKS: Light and variable becoming upslope/upcanyon after 1200.
INVERSION/STABILITY: Low level inversion won't lift until 1200 due to cloud cover.
CHANCE OF WETTING RAIN ($\geq 0.10''$): 45%. **HAINES INDEX:** 2 (Very Low) **LAL:** 1

TONIGHT:

WEATHER: Mostly clear.
MINIMUM TEMPERATURE: 45-51° above 5000 feet. 42-47° valley bottoms.
MAXIMUM RELATIVE HUMIDITY: 70-80% above 5000 feet. 85-95% valley bottoms.
20-FOOT RIDGETOP WINDS: Northwest 3-6 mph with gusts to 10 mph.
GREEN RIDGE CREEKS: Downslope/downcanyon 3-6 mph after 2000.
INVERSION/STABILITY: Moderate inversion.
CHANCE OF WETTING RAIN ($\geq 0.10''$): 5%

THURSDAY:

WEATHER: Mostly sunny.
MAXIMUM TEMPERATURE: 63-69° above 5000 feet. 75-83° valley bottoms.
MINIMUM RELATIVE HUMIDITY: 36-44% above 5000 feet. 27-35% valley bottoms.
20-FOOT RIDGETOP WINDS: Northwest 4-8 mph with gusts up to 14 mph in the afternoon.
GREEN RIDGE CREEKS: Light and variable becoming upslope/upcanyon after 1000.
INVERSION/STABILITY: Low level inversion will lift around 1000.
CHANCE OF WETTING RAIN ($\geq 0.10''$): 0%. **HAINES INDEX:** 2 (Very Low) **LAL:** 1

Observations from the field are valuable!

Email any obs to matthew.jeglum@noaa.gov or text them to 503-704-9955.

FIRE BEHAVIOR FORECAST

FORECAST NUMBER: 23	TYPE OF FIRE: Wildfire
FIRE NAME: Lick Creek & Green Ridge Fires	OPERATIONAL PERIOD: 08-18-2021 24 Hour
DATE ISSUED: 08-17-2021	TIME ISSUED: 1900
UNIT: Umatilla NF OR-UMF-000658 & 000659	SIGNED: //s// Larry Long FBAN

INPUTS

****See the attached Incident Weather Forecast****

OUTPUTS FIRE BEHAVIOR

GENERAL: Fire behavior should be moderate again today with the lower wind speeds. The higher humidity combined with the lower wind speeds will result in slower rates of spread, reduced torching, and a minimal chance of crown fire. There's a good (45%) chance of wetting rain today.

Probability of ignition is 55% with spotting distances of 1000 feet possible. Haines Index 2

1-hour fuel moistures: 6%, 10 hours at 4%, 100 hours at 7%, 1000-hour fuels are ~8 % and live fuel moistures are at around 75-95%. ERCs are above the 97th percentile.

Fuel model	Max. Flame Length	Day Shift ROS	Night Shift ROS	Spotting
Timber little and understory TU5/TL4	7-9 ft.	7-12 ch/hr	6-10 ch/hr	.2 miles
Short Grass/Shrub – GR2/GS2	1-2 ft.	2-4 ch/hr	1-2 ch/hr	.2 miles

SPECIFIC:

Green Ridge: The fire will continue to progress up and out of the drainages on the south flank, pushed by the upslope winds and the northwest general winds. The fire will be active in the heavier concentrations of fuels as the winds surface causing torching and spotting. The active line in divisions A & P will move along the drainages and over the ridges to the east and southeast. Expect short range spotting where slope and wind line up.

Lick Creek: The NW winds today should again be favorable by pushing the heat and smoke into the interior. Expect interior fuels to continue to consume and put off smoke.

Night Division: With the higher humidity and lower wind speeds, expect low to moderate fire behavior throughout the night. Torching may occur, especially on the uphill runs.

AIR OPERATIONS: Heavy smoke may hamper air operations.

SAFETY

Local Thresholds – **WATCHOUT:** Combinations of any of these factors can greatly increase fire behavior:

Elevations	20' Winds +15 mph	RH <20%	Temp +80°	1000hr Fuel <7%
3000 –5500'	NW 5-10 mph G17	38-44%	67.-73°	~8%

ASSIGNMENT LIST (ICS 204 WF)

CONTROLLED UNCLASSIFIED
INFORMATION//BASIC

1. Incident Name:	2. Operational Period:	3. Branch	Division
LICK CREEK/GREEN RIDGE	Date From: 08/18/21 Date To: 08/19/21 Time From: 0600 Time To: 0600	I	K

4. Operations Personnel:			
Operations Section Chief: Shay Rogge, Brad Pietruszka (T)	Planning Ops		
Branch Director: Rodney Redinger, Jay Godson (T)	Safety: Rob Pelton, Eric White (T)		
Division/Group Supervisor: Nate Kerschner, Isaiah Jimenez (T)	Air Attack: Tim Haas		

5. Resources Assigned:							
Resource Identifier	ALS	LWD	Leader	Personnel	Request #	Hours	Reporting Location
TFLD Nilson		8/25	Nilson	1	O-523	0600-2200	Dayton Spike
TFLD(T) Livingston		8/26	Livingston	1	O-568	0600-2200	Dayton Spike
ENG4 Hi Country GR		8/19	Burnette	3	E-127	0600-2200	Dayton Spike
ENG4 Ice Crescent		8/26	Freitag	3	E-285	0600-2200	Dayton Spike
ENG6 Terrance Titus		8/26	Lambrech	2	E-255	0600-2200	Dayton Spike
ENG6 Griz One		8/26	Berke	3	E-264	0600-2200	Dayton Spike
WTT2 Christman Trucking GR		9/5	Blazek	1	E-2	0600-2200	Dayton Spike
WTT2 Overpeck GR		8/29	Melton	1	E-3	0600-2200	Dayton Spike
WTS2 Fire Sail		8/28	Mitchell	1	E-298	0600-2200	Dayton Spike
WTS2 Vegetation Solutions		8/27	Cole	2	E-299	0600-2200	Dayton Spike
WTS2 A1 Firestorm		8/27	Wallace	1	E-300	0600-2200	Dayton Spike
WTS3 Bob Trumen		8/30	Trumen	2	E-301	0600-2200	Dayton Spike
WTS3 TKO		8/28	Cantarella	1	E-303	0600-2200	Dayton Spike
DOZ2 Alpine GR		9/2	Briggs	2	E-93	0600-2200	Dayton Spike
GRD Bruce Young		8/26	Johnson	2	E-266	0600-2200	Dayton Spike
EMTF Merrell GR		8/18	Merrell	1	O-359	0600-2200	Dayton Spike

6. Work Assignments:
 Provide point protection for structures within the Division.
 Continue to improve contingency dozer line and handline from repeater to Patrick Grade Road.
 Continue to improve where needed on 46 Road north of Godman staging to DP-220 DIV M break.
 Patrol and mop up from DP-220 to Godman staging and Godman staging to DP 260.

7. Special Instructions:
 Adventure Medics (E-77) located at DP-240. Lead READ Will Marquardt: 530-402-6202
 Operations will identify closest resources while DIVS identifies specific resources to respond to IA within TFR.
 Please ensure 3/32" fish screens are used at all draft sites in Punjab Creek, Touchet, and Tucannon Rivers.

8. Communications							
Name	Ch	Function	Rx Freq	Rx Tone	Tx Freq	Tx Tone	Notes
SEE ICS 205 COMM PLAN							

9. Prepared by: Name: Kellie Stover, Amy Daniels, Rick Lancaster(T) RESL Signature: 

ICS 204 Date/Time: 8/17/2021 2200 Personnel Count: 27

ASSIGNMENT LIST (ICS 204 WF)

CONTROLLED UNCLASSIFIED
INFORMATION//BASIC

1. Incident Name:	2. Operational Period:	3. Branch	Division
LICK CREEK/GREEN RIDGE	Date From: 08/18/21 Date To: 08/19/21 Time From: 0600 Time To: 0600	I	M

4. Operations Personnel:			
Operations Section Chief: Shay Rogge, Brad Pietruszka (T)	Planning Ops		
Branch Director: Rodney Redinger, Jay Godson (T)	Safety: Rob Pelton, Eric White (T)		
Division/Group Supervisor: Brandon Bonenberger, Daniel Kamakani (T)	Air Attack: Tim Haas		

5. Resources Assigned:							
Resource Identifier	ALS	LWD	Leader	Personnel	Request #	Hours	Reporting Location
TFLD(T) Bowen		8/20	Bowen	1	O-463	0600-2200	Rose Spike
TFLD(T) Dary		8/21	Dary	1	O-460	0600-2200	Rose Spike
HC2IA UMF Crew 3		8/21	Wagner	20	C-104	0600-2200	Rose Spike
HC2IA Vet Crew		8/20	Leggett	18	C-105	0600-2200	Rose Spike
ENG3 Prescott E-930		8/23	Langham	5	E-254	0600-2200	Rose Spike
WTS2 Rahi GR		8/19	Rahi	1	E-136	0600-2200	Wooten Camp
WTS3 JTS 2 GR		8/31	Elam	1	E-172	0600-2200	Wooten Camp
DOZ3 Kiser & Kiser 1 GR		8/26	Chamberlin	2	E-178	0600-2200	Rose Spike
SOF2 Roberts		8/24	Roberts	1	O-567	0600-2200	Rose Spike
EMPF Clark		8/27	Clark	1	O-529	0600-2200	Rose Spike

6. Work Assignments:

Hold and mop-up from 40 Road to the DIV K/M break.
 Burnout islands as needed.
 Coordinate with adjacent Divisions for additional holding resources.
 Improve handlines where possible.
 Secure spot fires north of DIV K/M containment lines.

7. Special Instructions:

Olympic Ambulance (E-239) located at DP-17.
 REMS 10 (E-185) located at DP-17. Lead READ Will Marquardt: 530-402-6202
 DIVS to identify equipment to be sent in an event of an IA within TFR. Operations will identify closest resources to respond to new incident.
 Please ensure 3/32" fish screens are used at all draft sites in Punjab Creek, Touchet, and Tucannon Rivers.

8. Communications							
Name	Ch	Function	Rx Freq	Rx Tone	Tx Freq	Tx Tone	Notes
SEE ICS 205 COMM PLAN							

9. Prepared by: Name:	Kellie Stover, Amy Daniels, Rick Lancaster(T)	RESL	Signature:	
ICS 204	Date/Time: 8/17/2021	2200	Personnel Count:	51

ASSIGNMENT LIST (ICS 204 WF)

CONTROLLED UNCLASSIFIED
INFORMATION//BASIC

1. Incident Name:	2. Operational Period:	3. Branch	Division
LICK CREEK/GREEN RIDGE	Date From: 08/18/21 Date To: 08/19/21 Time From: 0600 Time To: 0600	I	LICK

4. Operations Personnel:			
Operations Section Chief: Shay Rogge, Brad Pietruszka (T)	Planning Ops		
Branch Director: Rodney Redinger, Jay Godson (T)	Safety: Rob Pelton, Eric White (T)		
Division/Group Supervisor: Jon Stonelake, Neal McCann (T)	Air Attack: Tim Haas		

5. Resources Assigned:							
Resource Identifier	ALS	LWD	Leader	Personnel	Request #	Hours	Reporting Location
ENG3 B-5232		8/26	Fry	4	E-256	0600-2200	Rose Spike
ENG3 Smokey Bear		8/29	Quirarte	6	E-257	0600-2200	Rose Spike
ENG4 Central Wildfire		8/27	Ward	3	E-259	0600-2200	Wooten Camp
ENG6 Eagle Cap		8/28	Rivera	2	E-284	0600-2200	Wooten Camp
WTS2 Minam River DG		8/30	Henderson	1	E-40	0600-2200	Wooten Camp
WTS2 Huffman GR		8/28	Huffman	1	E-167	0600-2200	Wooten Camp
WTS3 JTS 1 GR		8/31	Elmer	1	E-170	0600-2200	Wooten Camp
DOZ2 Overpeck GR		8/18	Overpeck	2	E-4	0600-2200	Rose Spike
EXCA Swanson Logging		8/27	Carter	1	E-77	0600-2200	Rose Spike

6. Work Assignments:
 Patrol and mop up as needed to secure fire's edge along the Lick/M division break.
 Periodic patrols of the southern portion of the Lick Fire.

7. Special Instructions:
 Operations will identify closest resources while DIVS identifies specific resources to respond to IA within TFR.
 Please make sure 3/32" fish screens are used at all draft sites in Punjab Creek, Touchet, and Tucannon Rivers.
 Operational briefing to be broadcasted at Wooten Camp at 0630. See IAP for details. Lead READ Will Marquardt: 530-402-6202

8. Communications:							
Name	Ch	Function	Rx Freq	Rx Tone	Tx Freq	Tx Tone	Notes
SEE ICS 205 COMM PLAN							

9. Prepared by: Name:	Kellie Stover, Amy Daniels, Rick Lancaster(T)	RESL	Signature:	
ICS 204	Date/Time: 8/17/2021	2200	Personnel Count: 21	

ASSIGNMENT LIST (ICS 204 WF)

CONTROLLED UNCLASSIFIED
INFORMATION//BASIC

1. Incident Name:	2. Operational Period:	3. Branch	Staging
LICK CREEK/GREEN RIDGE	Date From: 08/18/21 Date To: 08/19/21 Time From: 0600 Time To: 0600	I	STAGING

4. Operations Personnel:	
Operations Section Chief: Shay Rogge, Brad Pietruszka (T)	Planning Ops:
Branch Director: Rodney Redinger, Jay Godson (T)	Safety: Rob Pelton, Eric White (T)
Base Camp Manager: Shelly White	Air Attack: Tim Haas

5. Resources Assigned:							
Resource Identifier	ALS	LWD	Leader	Personnel	Request #	Hours	Reporting Location
FEL1 Bruce Young GR		9/3	Winslow	2	E-79	0600-2200	DP 220 -Dayton Spike
FEL2 Wyeast GR		8/28	Bierbower	2	E-102	0600-2200	Rose Spike
MAST Hayden 2 GR		8/28	Hayden	2	E-72	0600-2200	Rose Spike
MAST Tucannon Outfitters GR		8/31	Martin	1	E-107	0600-2200	DP 220 -Dayton Spike

6. Work Assignments:

7. Special Instructions:
Shelly White (BCMG): 308-432-2978 is available at Rose Spike.

8. Communications							
Name	Ch	Function	Rx Freq	Rx Tone	Tx Freq	Tx Tone	Notes
SEE ICS 205 COMM PLAN							

9. Prepared by: Name:	Kellie Stover, Amy Daniels, Rick Lancaster(T)	RESL	Signature:	Personnel Count: 7
ICS 204	Date/Time: 8/17/2021 2200			

ASSIGNMENT LIST (ICS 204 WF)

CONTROLLED UNCLASSIFIED
INFORMATION//MITTENS

1. Incident Name:	2. Operational Period:	3. Branch	Division
LICK CREEK/GREEN RIDGE	Date From: 08/18/21 Date To: 08/19/21 Time From: 0600 Time To: 0600	II	P

4. Operations Personnel:			
Operations Section Chief: Shay Rogge, Brad Pietruszka (T)	Planning Ops		
Branch Director: Matt Norden, Deon Steinle (T)	Safety: Rob Pelton, Eric White (T)		
Division/Group Supervisor: Ian Barrett, Aaron Woodham (T)	Air Attack: Tim Haas		

5. Resources Assigned:							
Resource Identifier	ALS	LWD	Leader	Personnel	Request #	Hours	Reporting Location
ENG6 Earth Industries		8/25	Voss	3	E-246	0600-2200	Rose Spike
ENG6 ASF E623		8/27	Holmes	6	E-275	0600-2200	Rose Spike
WTS2 Ash Kickers DG		8/23	Waldron	1	E-15	0600-2200	Rose Spike
WTS2 Panther DG		8/18	Davis	1	E-45	0600-2200	Rose Spike
WTS2 Lovato GR		8/28	Lovato	1	E-135	0600-2200	Rose Spike
WTS2 McDonald		8/24	McDonald	1	E-247	0600-2200	Rose Spike
WTS2 Whitewater		8/28	Duckworth	1	E-310	0600-2200	Rose Spike
FMOD Swedberg		8/22	Wadley	1	O-439	0600-2200	Rose Spike
HEQB(T) Naughton		8/27	Naughton	1	O-606	0600-2200	Rose Spike
DOZ3 Traverse GR		8/25	Wilcox	2	E-177	0600-2200	Rose Spike
DOZ3 JB Contractors		8/27	Bostwick	2	E-273	0600-2200	Rose Spike
FEL1 Nash Contracting		8/27	Wilson	2	E-288	0600-2200	Rose Spike
SKG2 Bruce Young		8/30	Streifel	2	E-323	0600-2200	Rose Spike
SKID McClellan		8/30	McClellan	2	E-324	0600-2200	Rose Spike
GRD Alvord GR		8/23	Davis	2	E-132	0600-2200	Rose Spike
SOFR Foco GR		8/18	Foco	1	O-368	0600-2200	Rose Spike
SOFR Welsh		8/26	Welsh	1	O-565	0600-2200	Rose Spike
EMTF Kopelowitz		8/30	Kopelowitz	1	O-579	0600-2200	Rose Spike
EMTF Bohrer		8/30	Bohrer	1	O-581	0600-2200	Rose Spike

6. Work Assignments:
Continue scouting line for holding features.

7. Special Instructions:
Wilderness Medics (E-39) located at DP-62.
FOBS Gorsett will be in the Division scouting. Lead READ Will Marquardt: 530-402-6202

8. Communications							
Name	Ch	Function	Rx Freq	Rx Tone	Tx Freq	Tx Tone	Notes
SEE ICS 205 COMM PLAN							

9. Prepared by: Name: Kellie Stover, Amy Daniels, Rick Lancaster(T) RESL Signature:
ICS 204 Date/Time: 8/17/2021 2200 Personnel Count: 32

ASSIGNMENT LIST (ICS 204 WF)

CONTROLLED UNCLASSIFIED
INFORMATION//BASIC

1. Incident Name:	2. Operational Period:	3. Branch	Division
LICK CREEK/GREEN RIDGE	Date From: 08/18/21 Date To: 08/19/21 Time From: 0600 Time To: 0600	II	S

4. Operations Personnel:			
Operations Section Chief: Shay Rogge, Brad Pietruszka (T)	Planning Ops:		
Branch Director: Matt Norden, Deon Steinle (T)	Safety: Rob Pelton, Eric White (T)		
Division/Group Supervisor: Tom Kenny, Brad Bryant (T)	Air Attack: Tim Haas		

5. Resources Assigned:							
Resource Identifier	ALS	LWD	Leader	Personnel	Request #	Hours	Reporting Location
TFLD Mondragon		8/22	Mondragon	1	O-421	0600-2200	Grouse Spike
TFLD(T) Bateman		8/26	Bateman	1	O-569	0600-2200	Grouse Spike
HC1 Silver City IHC GR		8/20	Romero	21	C-96	0600-2200	Grouse Spike
HC1 Prescott IHC		8/26	Fisher	20	C-100	0600-2200	Grouse Spike
HC2 Rocha Restoration		8/30	Cruz	20	C-111	0600-2200	Grouse Spike
HC2 Grayback 9		8/29	Blanco	20	C-119	0600-2200	Grouse Spike
SMOD Williams 7-1		8/25	Sweeney	10	O-520	0600-2200	Grouse Spike
SMOD Slate Mtn		8/28	Alcantar-Torres	8	O-536	0600-2200	Grouse Spike
WFM2 Metolius		8/31	Gregg	10	O-637	0600-2200	Grouse Spike
WTS2 R&K Water Service		8/30	Eggleston	1	E-73	0600-2200	Grouse Spike
WTS3 MT Emily		8/30	Reynolds	1	E-81	0600-2200	Grouse Spike
HEQB Neugebauer		8/29	Neugebauer	1	O-570	0600-2200	Grouse Spike
HEQB(T) Chris Carney		8/21	Carney	1	O-458	0600-2200	Grouse Spike
DOZ3 Bruce Young GR		8/26	Miltonberger	2	E-85	0600-2200	Grouse Spike
CHIP JML		8/23	Jasiel	3	E-241	0600-2200	Grouse Spike
SOFR Welsh		8/26	Welsh	1	O-565	0600-2200	Grouse Spike

6. Work Assignments:
Continue to scout for control lines, and identify opportunities for improving existing roads and natural control features.

7. Special Instructions:

Lead READ Will Marquardt: 530-402-6202

8. Communications							
Name	Ch	Function	Rx Freq	Rx Tone	Tx Freq	Tx Tone	Notes
SEE ICS 205 COMM PLAN							

9. Prepared by: Name: Kellie Stover, Amy Daniels, Rick Lancaster(T) RESL Signature:

ICS 204 Date/Time: 8/17/2021 2200 Personnel Count: 121

ASSIGNMENT LIST (ICS 204 WF)

CONTROLLED UNCLASSIFIED
INFORMATION//BASIC

1. Incident Name:	2. Operational Period:	3. Branch	Division
LICK CREEK/GREEN RIDGE	Date From: 08/18/21 Date To: 08/19/21 Time From: 0600 Time To: 0600	II	W

4. Operations Personnel:

Operations Section Chief: Shay Rogge, Brad Pietruszka (T)	Planning Ops:
Branch Director: Matt Norden, Deon Steinle (T)	Safety: Rob Pelton, Eric White (T)
Division/Group Supervisor: Unstaffed	Air Attack: Tim Haas

5. Resources Assigned:

Resource Identifier	ALS	LWD	Leader	Personnel	Request #	Hours	Reporting Location
TBD							

6. Work Assignments:

7. Special Instructions:

8. Communications

Name	Ch	Function	Rx Freq	Rx Tone	Tx Freq	Tx Tone	Notes
SEE ICS 205 COMM PLAN							

9. Prepared by: Name: Kellie Stover, Amy Daniels, Rick Lancaster(T) RESL Signature:

ICS 204 Date/Time: 8/17/2021 2200 Personnel Count: 0

ASSIGNMENT LIST (ICS 204 WF)

CONTROLLED UNCLASSIFIED
INFORMATION//BASIC

1. Incident Name:	2. Operational Period:	3. Branch	Division
LICK CREEK/GREEN RIDGE	Date From: 08/18/21 Date To: 08/19/21 Time From: 0600 Time To: 0600	II	STRUCTURE

4. Operations Personnel:	
Operations Section Chief: Shay Rogge, Brad Pietruszka (T)	Planning Ops:
Branch Director: Matt Norden, Deon Steinle (T)	Safety: Rob Pelton, Eric White (T)
Division/Group Supervisor: Joe Tjaden	Air Attack: Tim Haas

5. Resources Assigned:							
Resource Identifier	ALS	LWD	Leader	Personnel	Request #	Hours	Reporting Location
TBD							

6. Work Assignments:

7. Special Instructions:

8. Communications							
Name	Ch	Function	Rx Freq	Rx Tone	Tx Freq	Tx Tone	Notes
SEE ICS 205 COMM PLAN							

9. Prepared by: Name:	Kellie Stover, Amy Daniels, Rick Lancaster(T)	RESL	Signature:	Date/Time: 8/17/2021	2200	Personnel Count: 0
ICS 204						

ASSIGNMENT LIST (ICS 204 WF)

CONTROLLED UNCLASSIFIED
INFORMATION//BASIC

1. Incident Name:	2. Operational Period:	3. Branch	Division
LICK CREEK/GREEN RIDGE	Date From: 08/18/21 Date To: 08/19/21 Time From: 0600 Time To: 0600	II	EAST CONTINGENCY

4. Operations Personnel:			
Operations Section Chief: Shay Rogge, Brad Pietruszka (T)	Planning Ops:		
Branch Director: Matt Norden, Deon Steinle (T)	Safety: Rob Pelton, Eric White (T)		
Division/Group Supervisor: Nick Collard, David Collins (T)	Air Attack: Tim Haas		

5. Resources Assigned:							
Resource Identifier	ALS	LWD	Leader	Personnel	Request #	Hours	Reporting Location
TBD							

6. Work Assignments:

7. Special Instructions:

8. Communications							
Name	Ch	Function	Rx Freq	Rx Tone	Tx Freq	Tx Tone	Notes
SEE ICS 205 COMM PLAN							

9. Prepared by: Name:	Kellie Stover, Amy Daniels, Rick Lancaster(T)	RESL	Signature:	Personnel Count: 0
ICS 204	Date/Time: 8/17/2021 2200			

ASSIGNMENT LIST (ICS 204 WF)

CONTROLLED UNCLASSIFIED
INFORMATION//BASIC

1. Incident Name:	2. Operational Period:	3. Branch	Division
LICK CREEK/GREEN RIDGE	Date From: 08/18/21 Time From: 0600	Date To: 08/19/21 Time To: 0600	NIGHT

4. Operations Personnel:			
Operations Section Chief: Shay Rogge, Brad Pietruszka (T)	Planning Ops		
Branch Director: Troy Mueller	Safety: Rob Pelton, Eric White (T)		
Division/Group Supervisor: Chris Rokosh, Jeff Corser (T)	Air Attack: Tim Haas		

5. Resources Assigned:							
Resource Identifier	ALS	LWD	Leader	Personnel	Request #	Hours	Reporting Location
TFLD(T) Best		8/28	Best	1	E-283.1	1800-1200	Rose Spike
ENG4 Inbound E18 GR		8/21	Navarro	3	E-161	1800-1200	Rose Spike
ENG4 AZ-IMR 2142		8/28	Linker	8	E-283	1800-1200	Rose Spike
ENG4 A1 Firestorm		8/30	Arenas	3	E-287	1800-1200	Rose Spike
ENG5 Methow River GR		8/24	Hernandez	3	E-159	1800-1200	Rose Spike
ENG6 Osprey Wildfire GR		8/23	Roe	3	E-149	1800-1200	Rose Spike
ENG6 Wilson Farm		8/26	Wilson	3	E-274	1800-1200	Rose Spike
ENG6 Thunderbolt Fire		8/26	Hall	3	E-286	1800-1200	Rose Spike
WTS2 Dahl-Bredine GR		8/27	Dahl-Bredine	1	E-133	1800-1200	Rose Spike
WTS2 Black Range GR		8/28	Crockett	1	E-134	1800-1200	Rose Spike
DOZ3 Mortimore 1 GR		8/30	Mortimore	2	E-176	1800-1200	Rose Spike
DOZ3 Mortimore 2 GR		8/30	Jaeger	2	E-180	1800-1200	Rose Spike
SOF2 Medina		8/20	Medina	1	O-363.9	1800-1200	Rose Spike
SOFR(T) Eric Adams		8/21	Adams	1	O-456	1800-1200	Rose Spike

6. Work Assignments:
Patrol and improve line where needed. Transfer operational needs to Day Operations. Take action as needed to ensure that existing structures and infrastructures do not sustain further damage.

7. Special Instructions:
Frontline Medical (E-61) located at DP-17. Lead READ Will Marquardt: 530-402-6202 DIVS to identify equipment to be sent in an event of an IA within TFR. Operations will identify closest resources to respond to new incident. Please make sure 3/32" fish screens are used at all draft sites in Punjab Creek, Touchet, and Tucannon Rivers.

8. Communications:							
Name	Ch	Function	Rx Freq	Rx Tone	Tx Freq	Tx Tone	Notes
SEE ICS 205 COMM PLAN							

9. Prepared by: Name:	Kellie Stover, Amy Daniels, Rick Lancaster(T)	RESL	Signature:
ICS 204	Date/Time: 8/17/2021	2200	Personnel Count: 34

AIR OPERATIONS SUMMARY 220	Prepared By: Matt Lingenfelter	Prepared: 08/17/2020	Prepared Time: 1900
1. INCIDENT NAME: Green Ridge / Lick Creek	2. OPERATIONAL PERIOD: 8/18/2021	START TIME: 0730	END TIME: 2130
		SUNRISE: 0550	SUNSET: 1958

<p>3. REMARKS (Safety Notes, Hazards, Air Operations Special Equipment, etc.).</p> <p style="text-align: center;"><u>A/G REDUCTION</u></p> <p style="text-align: center;"><u>Pilots and Helitack Crews please take note that we have released all but two Air to Ground frequencies. We still have a Primary A/G 168.2750 & Secondary AG 168.6250. These will remain the A/G's for both fires.</u></p>	<p>4. READY ALERT AIRCRAFT:</p> <p>IA: TBD Medivac: 3JR @ KALW Life Flight @ Walla Walla 3JR Short Haul @ KALW</p> <p style="text-align: center;"><i>Order through Communications See Medical Plan in the IAP</i></p>
---	--

6. PERSONNEL	NAME	PHONE #	7. FREQUENCIES	AM	FM	8A. FIXED-WING Ordering
AOBD	Carolyn Blatz	720-693-3194	A/A (TFR)	119.5250		AIR TANKERS/LEAD PLANES: ATGS order through Dispatch
AOBD (T)	Matt Lingenfelter	805-705-8621 970-294-2213	A/A (Secondary)	123.7000		8B. Aerial Supervision / Personnel / Location
ASGS	Ken Ostrom	307-272-3266	A/G (Primary)		168.2750	AIR ATTACK Platforms: Order through Operations
ATGS	Tim Haas	307-388-9997	A/G (Secondary)		168.6250	ATGS N400DS (Tim Haas)
HEBM	Lee Steward	775-220-6364	VMED 28		155.3400	Lewiston, Idaho
Blue Mountain Interagency Dispatch	AC Desk	541-963-7171	AIRGUARD		168.6250 TX 110.9	

9. HELICOPTERS

FAA N#	TY	MAKE/ MODEL	BASE	START	AVAIL	REMARKS	FAA N#	TY	MAKE/ MODEL	BASE	START	AVAIL	REMARKS
359EV	3	AS 350 B3	ALW	0730	0800	EU, Initial Attack, Bucket, Recon, Cargo	187CH	1	CH-46	ALW	0730	0800	CWN Bucket
353JR	3	AS 350 B3	ALW	0730	0800	EU, Initial Attack, Bucket, Recon, Cargo, Short Haul							



10. TASK/ MISSION/ ASSIGNMENT (Type/ function includes: Air Tactical, Retardant, Recon, Personnel Transport, Bucket Operations, SAR, etc.)					
TYPE/FUNCTION	PRIORITY	NAME OF PERSONNEL OR CARGO (if applicable) or instructions for tactical aircraft	MISSION START	FLY FROM	FLY TO
ATGS		Provide coverage as smoke or weather permits.	0800	Lewiston, Idaho	Fire
Initial Attack		Support Initial Attack actions as requested.	TBD	TBD	IA
Medevac		**See Medical Plan in IAP – Review during Division Breakouts**	TBD	TBD	Fire
Water Drops		As needed and approved by Operations	0800	Helibase	Fire
PSD/UAS Operations		As approved in the PSD/UAS plan, where and when needed, determined by Operations	TBD	TBD	Fire

Green Ridge Lick Creek Fire Costs:

Send All Aviation Costs to: 2021.greenridge.finance@firenet.gov
lickcreekhelibase@gmail.com & matt.lingenfelter@usda.gov

Wind Restrictions

Flights above ground level	Flight Permitted in Winds Less than / Maximum Gust Spread		
	Type 1 Helicopters <50kts / Gusts: N/A	Type 2 Helicopters <50kts / Gusts: N/A	Type 3 Helicopters <50kts / Gusts: N/A
More than 500' AGL	<40kts / Max Gust Spread: 15kts	<40 kts / Max Gust Spread : 15kts	<30kts / Max Gust Spread: 15kts
Less than 500' AGL			

Controlled Unclassified Information/Basic

Approved by: //s//: Matt Lingenfelter AOB(t)

CUI

INCIDENT RADIO COMMUNICATIONS PLAN I-205				1. INCIDENT NAME	2. DATE/TIME PREPARED	3. OPERATIONAL PERIOD DATE/TIME		
				GREEN RIDGE BR 1/N	08/15/21	8/18/21 0600 TO 8/19/21 0600		
4. BASIC RADIO CHANNEL UTILIZATION								
Ch #	Channel Name	Assignment	RX Frequency	RX Tone/NAC	TX Frequency	TX Tone/NAC	Mode Digital (D) Analog (A) Mixed (M)	Remarks
1	TAC 1	DIV M	168.0500	151.4	168.0500	151.4	A	BR 1 TAC
2	TAC 2	NIGHT	168.2000	151.4	168.2000	151.4	A	BR 1 TAC
3	TAC 3	NORTH	168.6000	151.4	168.6000	151.4	A	BR 1 TAC
4	TAC 4	DIV K	166.7250	151.4	166.7250	151.4	A	BR 1 TAC
5	TAC 5	LICK	166.7750	151.4	166.7750	151.4	A	BR 1 TAC
6	CMD 2	CMD 2	170.4125	131.8	165.9625	131.8	A	BR 1 CMD
7	CMD 3	CMD 3	170.0250	131.8	165.4500	131.8	A	BR 1 CMD
8	CMD 7	CMD 7	170.0000	151.4	166.6750	151.4	A	BR 1 CMD
9	CMD 8	CMD 8	170.6875	151.4	166.5750	151.4	A	BR 1 CMD
10	CMD 9	CMD 9	170.4250	151.4	168.0750	151.4	A	BR 1 CMD
11	CMD 10	CMD 10	172.0250	151.4	162.1750	151.4	A	BR 1 CMD
12	CMD 67	CMD 67	172.0750	151.4	162.2000	151.4	A	BR 1 CMD
13	A/G PRI		168.2750		168.2750		A	A/G PRIMARY
14	A/G SEC		168.5250		168.5250		A	A/G SECONDARY
15	VMED 28		155.3400		155.3400		A	AIR MEDICAL
16	AIRGUARD	EMERGENCY USE ONLY!	168.6250		168.6250	110.9	A	EMERGENCY USE ONLY!
ICS-205 Prepared By:		JIM MIDYETT, COM1		CLONE VERSION: GBR1816N		ALWAYS POST A HUMAN REPEATER TO RELAY MESSAGES OUT OF AREAS WHERE YOU DONT HAVE ADEQUATE COMMUNICATIONS		
		DPH: PRESS & HOLD # KEY TO CHECK VERSION.		KNG: LOOK AT ZONE LABEL				

CUI

CUI

INCIDENT RADIO COMMUNICATIONS PLAN I-205				1. INCIDENT NAME	2. DATE/TIME PREPARED	3. OPERATIONAL PERIOD DATE/TIME		
				GREEN RIDGE BR 2/S	08/15/21	8/18/21 0600 TO 8/19/21 0600		
4. BASIC RADIO CHANNEL UTILIZATION								
Ch #	Channel Name	Assignment	RX Frequency	RX Tone/NAC	TX Frequency	TX Tone/NAC	Mode Digital (D) Analog (A) Mixed (M)	Remarks
1	TAC 7	DIV P	168.0500	131.8	168.0500	131.8	A	BR 2 TAC
2	TAC 8	DIV S	168.2000	131.8	168.2000	131.8	A	BR 2 TAC
3	TAC 9	DIV T	168.6000	131.8	168.6000	131.8	A	BR 2 TAC
4	TAC 10	DIV W	166.7250	131.8	166.7250	131.8	A	BR 2 TAC
5	TAC 11	E CONTIN	166.7750	131.8	166.7750	131.8	A	BR 2 TAC
6	TAC 12	STRUCTURE	168.2500	131.8	168.2500	131.8	A	BR 2 TAC
7	CMD 2	CMD 2	170.4125	131.8	165.9625	131.8	A	BR 2 CMD
8	CMD 3	CMD 3	170.0250	131.8	165.4500	131.8	A	BR 2 CMD
9	CMD 7	CMD 7	170.0000	151.4	166.6750	151.4	A	BR 2 CMD
10	CMD 8	CMD 8	170.6875	151.4	166.5750	151.4	A	BR 2 CMD
11	CMD 9	CMD 9	170.4250	151.4	168.0750	151.4	A	BR 2 CMD
12	CMD 11	CMD 11	172.5500	131.8	169.4500	131.8	A	BR 2 CMD
13	A/G PRI		168.2750		168.2750		A	A/G PRIMARY
14	A/G SEC		168.5250		168.5250		A	A/G SECONDARY
15	VMED 28		155.3400		155.3400		A	AIR MEDICAL
16	AIRGUARD	EMERGENCY USE ONLY!	168.6250		168.6250	110.9	A	EMERGENCY USE ONLY!
ICS-205 Prepared By:			CLONE VERSION: GBR2816S		ALWAYS POST A HUMAN REPEATER TO RELAY MESSAGES OUT OF AREAS WHERE YOU DONT HAVE ADEQUATE COMMUNICATIONS			
			DPH: PRESS & HOLD # KEY TO CHECK VERSION.					
			KNG: LOOK AT ZONE LABEL					
			JIM MIDYETT COML					

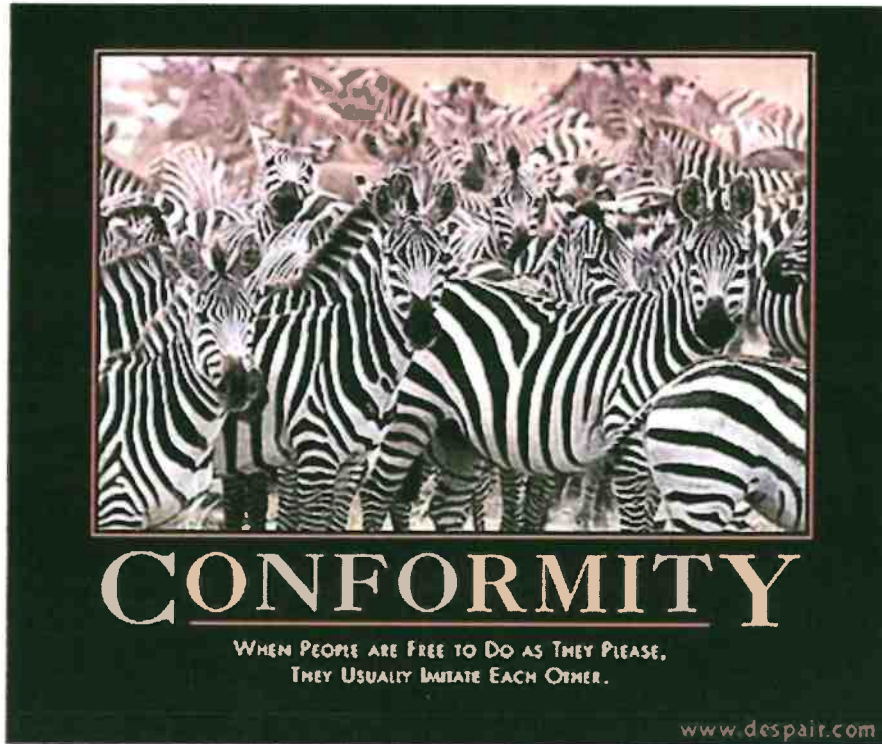
CUI

CUI

INCIDENT RADIO COMMUNICATIONS PLAN I-205		1. INCIDENT NAME		2. DATE/TIME PREPARED		3. OPERATIONAL PERIOD DATE/TIME		
		INITIAL ATTACK		08/15/21 1800		08/18/21 0600 TO 08/19/21 0600		
4. BASIC RADIO CHANNEL UTILIZATION								
Ch #	Channel Name	Assignment	RX Frequency	RX Tone/NAC	TX Frequency	TX Tone/NAC	Mode Digital (D) Analog (A) Mixed (M)	Remarks
1	ST ASOTIN	LOCAL RPTR	159.4200	D365	151.2950	D365	A	6 MILES W OF ANATONE
2	COTTNWD	LOCAL RPTR	173.7750	131.8	164.8250	127.3	A	18 MILES SE OF POMEROY
3	SADDLE	LOCAL RPTR	173.7750	131.8	164.8250	146.2	A	29 MILES SE OF POMEROY
4	OREGON	LOCAL RPTR	173.7750	131.8	164.8250	167.9	A	25 MILES S OF POMEROY
5	DIAMOND	LOCAL RPTR	173.7750	131.8	164.8250	151.4	A	
6	COM	DNR TAC	151.4150	103.5	151.4150	103.5	A	
7	TAC 1	DNR TAC	151.3100	103.5	151.3100	103.5	A	
8	TAC 2	DNR TAC	151.3400	103.5	151.3400	103.5	A	
9	TAC 3	DNR TAC	151.3500	103.5	151.3500	103.5	A	
10	REDNET	TACTICAL	153.8300		153.8300		A	
11	UMF-TAC	TACTICAL	168.2375	131.8	168.2375	131.8	A	
12	A/G 1	LOCAL A/G	159.2700	103.5	159.2700	103.5	A	
13	A/G 9	LOCAL A/G	166.9125		166.9125		A	
14	A/G 44	LOCAL A/G	167.6250		167.6250		A	
15	VMED 28	A/G	155.3400		155.3400		A	
16	AIRGUARD	EMERGENCY USE ONLY!	168.6250		168.6250	110.9	A	EMERGENCY USE ONLY!
ICS-205 Prepared By:		JIM MIDYETT, COML		Current Clone Date		USE HUMAN REPEATERS TO HELP RELAY MESSAGES OUT OF LOCATIONS WHERE YOU DO NOT HAVE ADEQUATE RADIO COMMUNICATIONS		

CUI

GREEN RIDGE FIRE HUMAN RESOURCE MESSAGE



“When people are free to do as they please, they usually imitate each other”

Take a step back and consider who you might be imitating. Are they demonstrating the ethics you want to attain?



Now consider who might be imitating you. Are your attitudes worthy of imitation?

If there is any way I can assist you, please do not hesitate to contact me.

**Your Human Resource Specialist,
Mike Baines, 724-678-6147**

TEAM BLACK FINANCE PROCEDURES

****Green Ridge, Lick Creek, and Dry Gulch Fires****

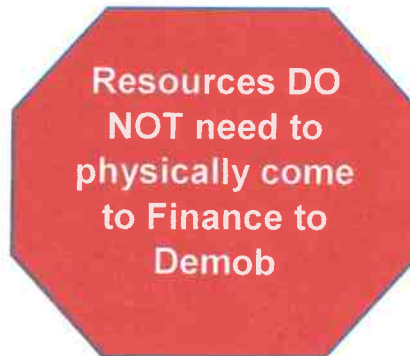
We are using a 100% electronic time submission process. Please submit time daily.
PLEASE REPORT TIME BASED ON THE FIRE YOU WORKED ON.

Resources just checking in: After checking in using the QR Code on the front of an IAP, please continue to the Finance portion and complete the Finance Check-In Form. Don't forget to submit the appropriate forms/documents electronically.

E-mail time to: 2021.greenridge.finance@firenet.gov

Please include resource type (**OVERHEAD, EQUIPMENT OR CREW**) in subject line. Please send electronic documents OR pictures.

If you are sending other information or questions to the finance email, please send separate email with appropriate subject line, ie: "Question on time" or "Explanation of travel."



To electronically demob from finance: Submit final CTRs and Shift Tickets to the above finance email. Include your email address and phone number. Make sure CTRs/Shift Tickets are complete and legible. **Once you have turned in your final CTRs/Shift Tickets you are released from Finance.** A final timesheet (OF288) and/or Invoice (OF286) will be emailed to you for review. Please respond with a confirmation email of accuracy. If there are errors or edits needed, contact-46 finance asap by replying to the email.

Travel safely home without having to deal with finance in person!

If you are unable to send electronic CTRs/Shift Tickets due to lack of connectivity, or incompatible devices, hard copies will be accepted. Coordinate with your supervisor for delivery to Finance. BE SURE TO INCLUDE PHONE NUMBER AND EMAIL ADDRESS. When you are ready to demob, call one of the Finance numbers below.

If you have any questions, please contact us at:

Finance 971-245-0248 or 971-727-7461; Comp/Claims 541-969-2396

Demob Tips

*****Note: If you have cell phone coverage and have nothing to return to Communications or Supply, you will not physically need to come to demob.*****

AIR TRAVELERS please contact or stop by demob 4 days prior to your demob date to confirm travel plans.

After being notified by your supervisor of your tentative release date:

1. Return all supplies, radios, etc. that were checked out. If you have no items to return, you can complete finance and demob virtually. All line vehicles must complete a WEED WASH and have a post-inspection of their vehicles.
2. Submit time for all personnel and equipment to Finance per directions in IAP.
3. Once you receive confirmation from FINANCE with a copy of your OF-288 and other financial documentation, you are free to complete Step 4 and travel home.
4. Complete demob Checkout Sheet using QR code on the cover of the IAP. If unable to use, see demob. Once demob receives confirmation from Finance and your demob checkout sheet has been electronically submitted, you will be released in the system.

Demob Unit email: 2021.greenridge.demob@firenet.gov (970) 217-6479

Training Specialist Message/Training Process

You do not have to wait until the last work day to complete a position task book (PTB) evaluation. You can complete the evaluation process at any time on the incident. Trainees are not required to check in with the Incident Training Specialist (TNSP). However, Geographic Area Priority Trainee Program participants are strongly encouraged to check in with the TNSP. The TNSP is available to answer questions and/or help guide both the Trainee and Evaluator through the process.

1. Incident trainees should check in early with the TNSP either in person or remotely using the QR code on the IAP cover. Within that QR code exists a training portal.
2. The trainee needs to take ownership of their training assignment. Working closely with their evaluator, identify tasks and learning opportunities that can be documented in their PTB.
3. Ensure all the information is complete and correct on the Evaluation Record and, if being recommended for certification, the PTB Verification/Certification form. Incorrect or incomplete information is a very common issue in PTBs and, all too often, delays certification of a trainee as fully qualified. Please review all information to make sure it is complete, accurate, and legible.
4. The evaluator should complete an Incident Personnel Performance Rating (ICS 225 WF) for the trainee, and submit a copy to the TNSP either in person or a picture copy.
5. Once all the documentation is completed, the trainee will need to close out with the TNSP. The trainee can: 1) stop by and close out in person with TNSP; 2) call the TNSP to go through the Exit Interview Form and discuss how the assignment went; or 3) complete the Exit Interview Form through the QR code link.

Incident Training Specialist email: 2021.greenridge.plans@firenet.gov

TENTATIVE RELEASE DATES & TIMES

08/18/2021

CREWS

C-43	0700	(HC2) BLUE MOUNTAIN
C-45	0600	(HC2) MOSQUEDA REFORESTATION

EQUIPMENT

E-45	0730	(WTS2) PANTHER RIDGE DG
E-48	0800	(WTS2) MVP TEAM DG
E-69	0800	(MAST) BRUCE YOUNG LOGGING GR
E-70	0800	(MAST) EAGLE CAP FORESTRY GR
E-85	0700	(ENG4) CHEWACK WILDFIRE
E-105	0600	(ENG6) AZ-A1S - E-161
E-105	0900	(SHW) A-1 SHOWER/WATER & DUMP
E-179	0800	(DOZ3) DOZER - T3 - KISER & KISER
E-291	0600	(DOZ3) BOB MURRAY LOGGING –
E-292	0630	(DOZ3) OWENS FREIGHT LINES, INC –
E-293	0630	(DOZ3) DOZER - T3 - JAY
E-295	0700	(DOZ3) DOZER - T3 - OWENS FREIGHT
E-267	0730	(MAST) MISC - MASTICATOR - BOOM
E-289	0730	(MAST) MISC - EXCAVATOR, T2 –

OVERHEAD

O-281	0800	(EMTF) HOLBORN, KYLE
O-368	1700	(SOFR) FOCO JR, DONALD HOWARD
O-373	1800	(DIVS) BRYANT, BRADLEY E
O-441	0600	(FMOD) FALLER MODULE –
O-442	0700	(FMOD) FALLER MODULE - ELLIOTT,

08/19/2021

EQUIPMENT

E-4	0600	(DOZ2) OVERPECK LOGGING GR (DBA)
-----	------	----------------------------------

OVERHEAD

O-228	0600	(THSP) MEDINA, STEVE
O-227	0600	(THSP) MONROE, CASS
O-231	0630	(GSUL) CERVANTES, JORGE
O-359	0700	(EMTF) FIRELINE MEDICS, LLC-EMT32-
O-364	0700	(DIVS) KAMAKANI, DANIEL
O-365	0700	(DIVS) MCCANN, NEAL
O-387	0800	(REAF) ALLEN, ROAN C

118°7.5'W 118°2.5'W 117°57.5'W 117°52.5'W 117°47.5'W 117°42.5'W 117°37.5'W 117°32.5'W 117°27.5'W 117°22.5'W 117°17.5'W

Transportation Map



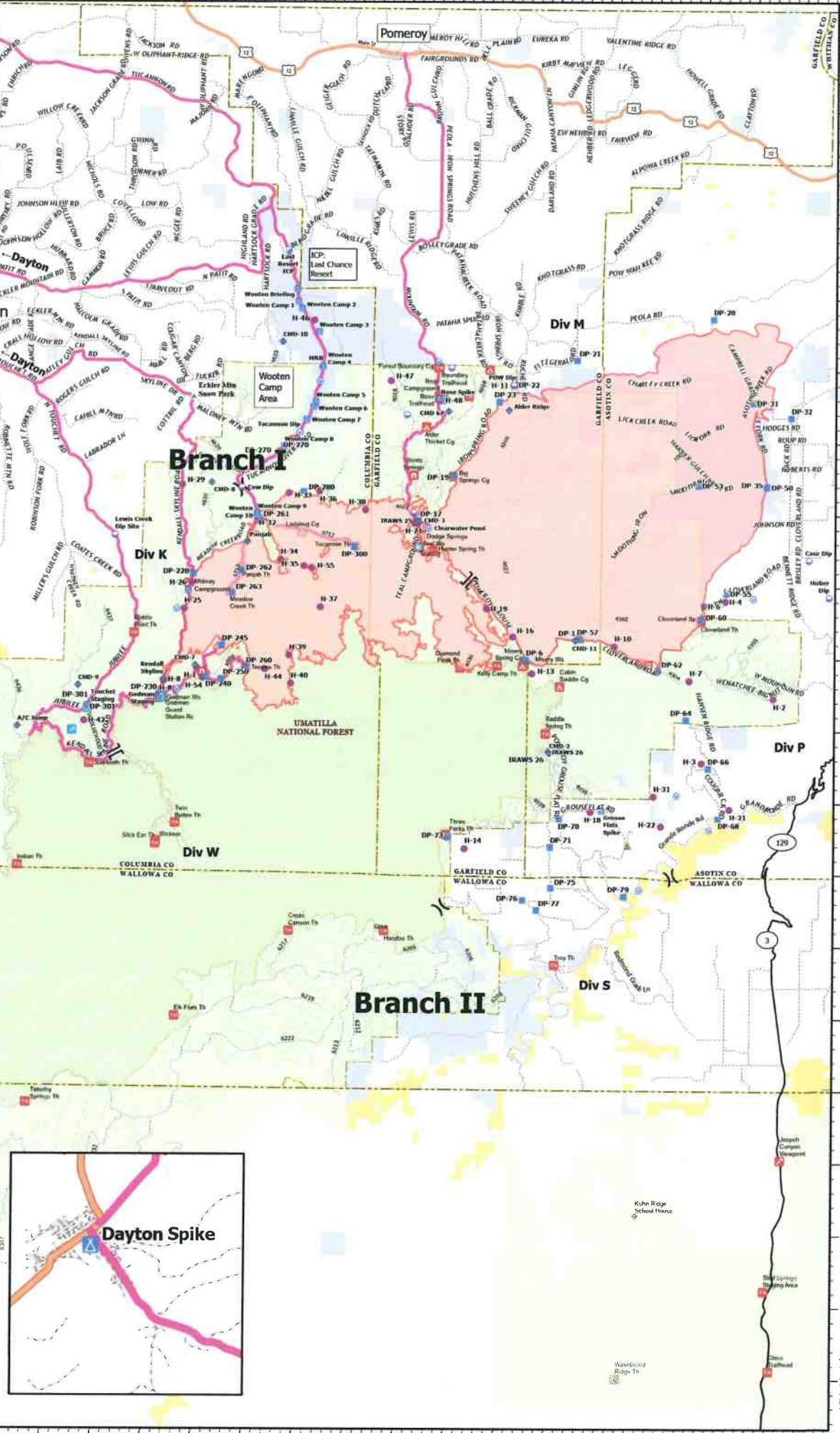
Green Ridge
OR-UMF-000659
8/18/2021 24hr
37,599 acres at
8/16/2021@2023

- Wildfire Daily Fire Perimeter
- Label Point
- Dip Site
- Mobile Retardant Base
- Helispot
- Division Break
- Branch Break
- Incident Command Post
- Drop Point
- Camp
- Staging Area
- Mobile Weather Unit
- Repeater
- Safety Zone
- Water Source
- U.S. Forest Service
- Bureau of Land Management
- State Land
- Other Land, Including Private
- Wilderness
- Secondary Hwy
- Local Connector
- Local Road
- 4WD



0 1 2 3
Miles

8/17/2021 1955
North American 1983 Datum.
Lat/Long Grid



46°27.5'N 46°22.5'N 46°17.5'N 46°12.5'N 46°07.5'N 46°02.5'N 45°57.5'N 45°52.5'N 45°47.5'N 45°42.5'N

46°07.5'N 46°02.5'N 46°17.5'N 46°12.5'N 46°07.5'N 46°02.5'N 46°07.5'N 46°02.5'N 46°07.5'N 46°02.5'N 45°57.5'N 45°52.5'N 45°47.5'N 45°42.5'N

118°5'W 118°0'W 117°55'W 117°50'W 117°45'W 117°40'W 117°35'W 117°30'W 117°25'W 117°20'W 117°15'W



Rocky Mountain IMT Black



Line Supply Order

Date & Time Order was Placed	Order # (BR+DIVS + #)	Location & Time for Delivery (Division/LZ/DP/Lat Long)	Mode of delivery (Driven/Helo/DIVS to Pick up)

Order received in Communications by (name & time):

Order received in Supply by (name & time):

Order received in Transportation by (name & time):

Order received in Helibase by (name & time):

Order shipped to line unit by (name & time): (Send this sheet to the line with the order)

#	Item	Amount		Item	Amount
1.	Meals, Breakfasts	ea	30.	Slingable Blivet	ea
2.	Meals, Lunches	ea	31.	Folding Tank, specify size	ea
3.	Meals, Dinners	ea	32.	Lightweight Pump Kit (Cache)	ea
4.	Meals, MRE's	cs	33.	Hose, 1 1/2"	ea
5.	Water, 5 gal. cubie	ea	34.	Hose, 1"	ea
6.	Batteries- AA	1-Flat	35.	Hose, 3/4"	ea
7.	Batteries, Specify Type	pk	36.	Reducer, 1 1/2" x 1"	ea
8.	Flagging, Specify type	roll	37.	Reducer, 1" x 3/4"	ea
9.	Gas, raw	gal	38.	Gated "Y", 1 1/2"	ea
10.	Bar Oil	gal	39.	Gated "Y", 1"	ea
11.	2- cycle oil, chainsaw (2.5 oz)	6 pk	40.	Gated "Y" 3/4 "	ea
12.	Sleeping Bags	ea	41.	Shut-off Valve, "	ea
13.	Gatorade	cs	42.	In-line Tee, 1 1/2" x 1"	ea
14.	Tarps / Plastic	roll	43.	Nozzle, 1 1/2"	ea
15.	Parachute Cord	roll	44.	Nozzle, 1"	ea
16.	Tool, Shovel	ea	45.	Nozzle, 3/4"	ea
17.	Too I, Pulaski	ea	46.	20 Man First Aid Kit	ea
18.	Tool, Combi	ea	47.	Chainsaw Kit	ea
19.	Tool, McLeod	ea	48.	Toilet Paper (96 per case)	cs
20.	Tool, Specify Type	ea	49.	1000 ft. Hose Lay Kit	ea
21.	Fusee	cs	50.	Garbage Bags	bx
22.	Drip Torch	ea	51.	Leadline	ea
23.	Drip Torch Mix, 5 gal.	ea	52.	Spike Supply Kit	ea
24.	Coffee Kit w/propane	ea	53.	Dolmar (6 per case)	ea
25.	Swivel	ea	54.	Sprinkler Kit	ea
26.	Backpack Pump	ea	55.	LINE Spike Supply Kit	ea
27.	Pumpkin, specify size	ea	56.	Duct Tape	roll
28.	Mark 3 Pump Kit w/fuel	ea	57.	House Wrap	roll
29.	2-cycle oil, high pressure pump	qt	58.	Staple Gun w/ staples	ea

Team Ordering/Timeline Process:

- 0630 - Morning Briefing, start of crew time.
- 1100 - Last call to change spike camp resource hot food location.
- 1600 - *DIVS* to have next day's resource order ready for Planning OPS.

- All crew level orders will be placed through *DIVS* or Branch.
- *DIVS* or Branch will place all orders through Communications Unit.
- All orders will be tracked using the process found on the front of this form.

GPS Datum: NAD 83- Degrees, Decimal, Minutes (DDMM.MM)

Definitions

FOB-Forward Operating Base is a secure forward position established to strategize, design and discuss tactics, and for personnel to transfer information and meet.

Line Spike Camp-Managed by Operations at the *DIVS* level; mobile, short duration and self- sufficient.

Spike Camp-Supported by Logistics, listed in the IAP, numbers in camp are set by 1100, named by Plans.

Emergency Medevac- Life threatening situation requiring immediate medical attention. Handled as per IAP med plan and team SOP's. Communications to clear command channel radio traffic.

Medical Transport-Transport of less serious injury/illness managed by Operations or line Medics back to camp for evaluation and/or treatment.

1000 ft. Hose Lay Kit (Order as "#49")				Spike Supply Kit (Order as "#52")			
Quantity	NFES#	Item	Weight	Quantity	NFES#	Item	Weight
10 ea	1239	Hose 1½"	125 lbs	2 rolls	0071	Duct Tape	4 lbs
10 ea	1238	Hose 1"	84 lbs	4 rolls	0222	Fiber Tape	2lbs
20 ea	1016	Hose ¾"	25 lbs	1 case	0021	Trash Bags	21 lbs
5 ea	0231	1½" Gated "Y"	20 lbs	1 case	0465	Cups for hot liquid	18 lbs
5 ea	0259	1" Gated "Y"	13 lbs	2 ea	0070	16x24 Tent fly	40 lbs
10 ea	0904	¾" Gated "Y"	3 lbs	3 ea	0027	Water Wash Basins	2 lbs
5 ea	0010	Reducers 1½" - 1"	3 lbs	1 case		Liquid Hand Soap / pump	10 lbs
5 ea	0733	Reducers 1" - ¾"	2 lbs	18 cases	1842	MRE's	18 x 20= 360 lbs
10 ea	0738 or 0835	Ball Valve ¾"	5 lbs	48 ea	0022	Sleeping bags (dbl. bag)	48 x 5= 240 lbs
10 ea	0138	Nozzle, 1"	5 lbs	3 cases	0030	AA Batteries, 24 pkg./case	90 lbs
10 ea	0136	Nozzle ¾"	5 lbs	1case	0240	Paper Towels	41 lbs
5 ea	0230	Tee 1½x1½x1"/valve	5 lbs	1 case	0142	Toilet Paper	44 lbs
LINE Spike Supply Kit (Order as "#55")				1roll	0144	Plastic sheeting	45 lbs
				1 roll	0533	P-Cord	9 lbs
Quantity	NFES#	Item	Weight	20 ea	7443	Cubies, 5 gal. Full Potable Water	20 x 40= 800 lbs
20+0H	0022	Sleeping bags	20 x 5= 100 lbs	1 box	1059	12" Bastard Files	9lbs
20 ea	7443	Cubies, 5 gal Full	20x40= 800 lbs	1 ea	3444	2-cycle mix, chainsaw (6 pk 2.5 oz)	2lbs
18 cases	1842	MRE's	18x20=360 lbs	8 gal	1880	Bar Oil	64 lbs
1 sl	0533	P-Cord	9 lbs	15 gal		Regular Gas	120 lbs
3 cases	0030	AA Batteries, 24 pkg./case	90 lbs	1 can		3 lbs. can coffee	3 lbs
1 case	0021	Trash bags	21 lbs	1 ea		2 1/2 gal coffee pot or 3-1 gal	10 lbs
10 rolls	0142	Toilet paper	3 lbs	2ea	0089	Ridge pole	46 lbs
1 roll	0144	Plastic sheeting	45 lbs	12 ea	0083	Pole upright	89 lbs
2 rolls	0222	Fiber Tape	2 lbs	24 ea	0825	Stake Tent	24 lbs
1 ea	3444	2-cycle mix, chain-saw (6 pk 2.5 oz)	2 lbs				
4 gal	1880	Bar Oil	32 lbs				
15 gal		Regular Gas	120 lbs				
1 box	1059	12" Bastard Files	9 lbs				

Green Ridge COVID Protocols

1. If you are having any COVID Symptoms but not limited to example below:
 - a. Fever
 - b. Cough
 - c. Headache
 - d. Muscle aches
 - e. Sore throat
 - f. Fatigue
 - g. Diarrhea/GI
 - h. Loss of smell
 - i. Loss of taste
2. Let your immediate supervisor know.
3. Call the COVID Hotline ASAP (971-245-9407) 24/7
4. Self-isolate
5. Stay-away from people
6. Wear a Mask
7. Wait for the COVID Task Force to make recommendations.

COVID GUIDELINES

MASKS ARE REQUIRED:

BRIEFINGS.

CAN'T MAINTAIN 6FT SOCIAL DISTANCING OUTSIDE.

INDOORS.

VEHICLES. (Example: More than one person in vehicle)

MASK WEARING EXCEPTION:

ALONE IN AN ENCLOSED SPACE. (Example: One person in Vehicle)

ACTIVELY ENGAGED IN FIREFIGHTING ON THE FIRELINE.

OUTSIDE AND CAN MAINTAIN 6FT APART.

EATING OR DRINKING (6FT SOCIAL DISTANCE)



NWCG screening Tool

PLEASE CONTACT THE GREEN RIDGE COVID
HOTLINE IF YOU HAVE ANY QUESTIONS ABOUT COVID, SYMPTOMS,
AND OR *FREE TESTING*.

GREEN RIDGE COVID HOTLINE # 971-245-9407

MEDICAL PLAN (ICS 206 WF)

Controlled Unclassified Information//Basic

Medical Incident Report

FOR A NON-EMERGENCY INCIDENT, WORK THROUGH CHAIN OF COMMAND TO REPORT AND TRANSPORT INJURED PERSONNEL AS NECESSARY.

FOR A MEDICAL EMERGENCY: IDENTIFY ON SCENE INCIDENT COMMANDER BY NAME AND POSITION AND ANNOUNCE "MEDICAL EMERGENCY" TO INITIATE RESPONSE FROM IMT COMMUNICATIONS/DISPATCH.

Use the following items to communicate situation to communications/dispatch.

1. CONTACT COMMUNICATIONS / DISPATCH (Verify correct frequency prior to starting report)

Ex: "Communications, Div. Alpha. Stand-by for Emergency Traffic."

2. INCIDENT STATUS: Provide incident summary (including number of patients) and command structure.

Ex: "Communications, I have a Red priority patient, unconscious, struck by a falling tree. Requesting air ambulance to Forest Road 1 at (Lat./Long.) This will be the Trout Meadow Medical, IC is TFLD Jones. EMT Smith is providing medical care."

Severity of Emergency / Transport Priority	<input type="checkbox"/> RED / PRIORITY 1 Life or limb threatening injury or illness. Evacuation need is IMMEDIATE <i>Ex: Unconscious, difficulty breathing, bleeding severely, 2° – 3° burns more than 4 palm sizes, heat stroke, disoriented.</i> <input type="checkbox"/> YELLOW / PRIORITY 2 Serious Injury or illness. Evacuation may be DELAYED if necessary. <i>Ex: Significant trauma, unable to walk, 2° – 3° burns not more than 1-3 palm sizes.</i> <input type="checkbox"/> GREEN / PRIORITY 3 Minor injury or illness. Non-Emergency transport <i>Ex: Sprains, strains, minor heat-related illness.</i>	
Nature of Injury or Illness & Mechanism of Injury		Brief Summary of Injury or Illness <i>(Ex: Unconscious, Struck by Falling Tree)</i>
Transport Request		Air Ambulance / Short Haul/Hoist Ground Ambulance / Other
Patient Location		Descriptive Location & Lat. / Long. (WGS84)
Incident Name		Geographic Name + "Medical" <i>(Ex: Trout Meadow Medical)</i>
On-Scene Incident Commander		Name of on-scene IC of Incident within an Incident <i>(Ex: TFLD Jones)</i>
Patient Care		Name of Care Provider <i>(Ex: EMT Smith)</i>

3. INITIAL PATIENT ASSESSMENT: Complete this section for each patient as applicable (start with the most severe patient)

Patient Assessment: See IRPG page 106

Treatment:

4. TRANSPORT PLAN:

Evacuation Location (if different): (Descriptive Location (drop point, intersection, etc.) or Lat. / Long.) Patient's ETA to Evacuation Location:

Helispot / Extraction Site Size and Hazards:

5. ADDITIONAL RESOURCES / EQUIPMENT NEEDS:

Example: Paramedic/EMT, Crews, Immobilization Devices, AED, Oxygen, Trauma Bag, IV/Fluid(s), Splints, Rope rescue, Wheeled litter, HAZMAT, Extrinsic

6. COMMUNICATIONS: Identify State Air/Ground EMS Frequencies and Hospital Contacts as applicable

Function	Channel Name/Number	Receive (RX)	Tone/NAC *	Transmit (TX)	Tone/NAC *
COMMAND					
AIR-TO-GRND					
TACTICAL					

7. CONTINGENCY: Considerations: If primary options fail, what actions can be implemented in conjunction with primary evacuation method? Be thinking ahead.

8. ADDITIONAL INFORMATION: Updates/Changes, etc.

REMEMBER: Confirm ETA's of resources ordered. Act according to your level of training. Be Alert. Keep Calm. Think Clearly. Act Decisively.

