

Lick Creek – Green Ridge Fires

OR-UMF-000658 / OR-UMF-000659

P6N5AV (0614)

221-LTD (WA-DNR)

Send TIME to: 2021.greenridge.finance@firenet.gov

Saturday, August 21, 2021

Operational Period 0600-2200



Rocky Mountain IMT2 Black

Troy Hagan, ICT2 — Bill Waln, Deputy ICT2

Public Fire Information
2021.greenridge@firenet.gov

IAP/Map/Demob/Check-in/Etc



**Communications 24-Hour
Emergency Number:
971-727-7965**

<https://tinyurl.com/jtb3wzk6>

1. Incident Name: Lick Creek / Green Ridge	2. Operational Period:	Date From: 08.21.2021 Time From: 0600	Date To: 08.21.2021 Time To: 2200
---	-------------------------------	--	--

- 3. Objective(s):**
- Provide for the safety of firefighters and the public through the utilization of strategic and deliberate risk assessment processes. Ensure incident within an incident (IWI) protocols are established.
 - Develop and implement strategies and tactics with the highest probability of success to protect identified values at risk.
 - Maintain and enhance relationships, through timely communication, actively engaging the Agency Administrators, the public, and stakeholders.
 - Coordinate with the READs to ensure natural and historical values are identified and protected.
 - Assist with initial attack as requested, when it will not impede meeting of incident objectives.
 - Manage the incident following established COVID-19 mitigation guidelines limiting spread of infectious diseases.

4. Safety

KEEP YOUR GUARD UP!

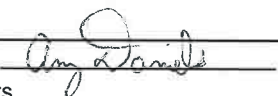
- *Maintaining situational awareness takes effort!*
- *Continue planning to provide for safety then engage in your mission!*
- *Watch for complacency in others and help them stay sharp.*
- *Monitor the smoke conditions and the effects it has on crews.*
- *Be methodical and meticulous in your tactics to get the job done safely!*

Keep Your Head in the Game!

5. Prepared by PSC2: Name: Rocco Smart
 Signature: Rocco Smart

6. Approved by Incident Commander: Name: Troy Hagan
 Signature: Troy Hagan

ORGANIZATION ASSIGNMENT LIST (ICS 203)

1. Incident Name: LICK CREEK/GREEN RIDGE		2. Operational Period: Date From: 8/21/2021 Time From: 0600		Date To: 8/21/2021 Time To: 2200	
3. Incident Commander(s) and Command Staff:			7. Operation Section:		
IC	Troy Hagan	Operations Chief	Shay Rogge		
Deputy	Bill Wain	Planning Operations	Troy Mueller		
Safety Officer	Rob Pelton, Pat Medina, Eric White (T), Eric Adams (T)	Field Operations	Rodney Redinger		
Medical	Dave Gier, Lionel Vangurp (T), Stephanie McGovern (T)		Branch I	Jay Godson (T)	
Information Officer	Dawn Sanchez, Brant Porter, Olivia Bruce (T)	Division/Group	K	Nate Kerschner, Isaiah Jimenez (T)	
Liaison Officer	Sam Carle, Mark Neely (V)	Division/Group	M/LICK	Chris Rokosh, Jeff Corser (T)	
Human Resource Specialist	Mike Baines				
4. Agency/Organization Representatives:					
USFS AADM	Kelly Lawrence		Branch II	Deon Steinle (T)	
USFS AREP	Susan Piper				
WA DNR	Wyatt Leighton, Bob Johnson	Division/Group	P	Ian Barrett, Aaron Woodham (T)	
ODF	Matt Howard	Division/Group	S	Nick Collard, David Collins (T)	
Asotin Co Fire Dist 1	Noel Hardin	Division/Group	W	Unstaffed	
Columbia Co Fire 3	Jeromy Phinney	Division/Group	STRUCTURE	Joe Tjaden	
Garfield Co Fire Dist 1	James Cleveland	Division/Group	EAST CONTINGENCY	Unstaffed	
WFS	Devin McCosh				
WDFW - LEO	Paul Mosman				
COVID Liaison	Sean Gullikson, Chloe Read	8. Air Operations Branch			
5. Planning Section:		Air Operations Branch Director	Carolyn Blatz, Matt Lingenfelter (T)		
Chief	Rocco Snart, Peter Barth	Air Support Group Supervisor	Ken Ostrom		
Resource Unit	Kellie Stover, Amy Daniels, Rick Lancaster (T)	Air Tactical Group Supervisor	Craig Hall		
		Helibase Manager	Ken Ostrom		
Situation Unit	Tara Umphries, Kristen Marshall (T), Brenda Wasielewski (T)				
Demobilization Unit	Deanna Engelmann (T)	9. Finance/Administration Section:			
Incident Meteorologist	David Shallenberger	Chief	Mavis Biastoch, Patty Wyatt		
Status Check-In	Holly Harris	Time Unit	Kayla Clark		
Fire Behavior	Boyd Lebeda	Cost Unit	Kristie Bowen (T)		
Documentation Unit	Spencer Pollock (V)	Compensation Unit	Pearl Cowan		
GIS Specialist	Sarlyn McCormick, Justin Mund (V), Janice Naylor (V), Sarah Strehle (T)				
Strategic Planner					
Long Term Analyst	Dan Bartel (V), Kirk Will (V) (T)				
Training Specialist	Steve Ellis (V), Wendy Fischer (T)				
6. Logistics Section					
Chief	Wally Leander, Randy Spiering, Darin Gehring				
Ground Support Unit	Jamie Rietz				
Communications	Jim Midyett				
Facilities - ICP	Monty Bollock, D. Brown, Ish Ennis				
Facilities - Rose Spike	Shelly White				
IT Specialist	Kevin Watts				
Supply Unit	Robin Brooks, Nate Haynes (T)				
Food Unit	Clyde Leggins				
Ordering	Jason Reynolds, Ian Johnson (T)				
Security	Darrell Hanson, Clyde Harris (T)				
Prepared By: Name:	Amy Daniels	Position/Title:	RESL	Signature:	
ICS 203		Date/Time:	8/20/2021 2100 hours		



Lick Creek / Green Ridge Weather Forecast



FORECAST NO: 41
FORECAST FOR: Saturday Operational Period
SHIFT DATE: 8/21/2021
DATE AND TIME ISSUED: 8/20/2021 at 1900 PDT

NAME OF FIRE: Lick Creek/Green Ridge
UNIT: OR-UMF
SIGNED: David Shallenberger - Incident Meteorologist
240-778-5019

...Showers and Thunderstorms for Saturday; then dry...

WEATHER DISCUSSION: A cold front will still be in the process of passing through the area by Saturday morning with some lingering showers over the incident in the morning. An overall cooler and wetter days in store mainly on the east side of the incident. An additional round of showers and thunderstorms will develop by midday and continue into the afternoon. Skies will clear out and dry up by the evening. Total rainfall across mainly the eastern side of the fire could range from 0.25 to 0.50 inches. A drier air mass will move in for Sunday with an increase in wind gusts up to 25 mph. Temps will rebound and RH values will quickly respond lower with the change in drier air moving in. Drier and warm conditions will persist into Monday with a much cooler morning to start the day.

TODAY:

WEATHER: Mostly cloudy with showers in the morning. Showers and a few gusty thunderstorms in the afternoon.

MAXIMUM TEMPERATURE: 60-65° above 5000 feet. 65-70° valley bottoms.

MINIMUM RELATIVE HUMIDITY: 65-70% above 5000 feet. 60-65% valley bottoms.

20-FOOT RIDGETOP WINDS: North-northwest 5-8 mph with gusts up to 15 mph in the afternoon.

GREEN RIDGE CREEKS: Light and variable becoming upslope/upcanyon after 1300.

INVERSION/STABILITY: Low level inversion will lift around 1100.

CHANCE OF WETTING RAIN (≥ 0.10 "): 50%. **HAINES INDEX: 2 (Very Low) **LAL:** 2**

TONIGHT:

WEATHER: Clear. Some smoke in the morning.

MINIMUM TEMPERATURE: 49-54° above 5000 feet. 47-52° valley bottoms.

MAXIMUM RELATIVE HUMIDITY: 70-75% above 5000 feet. 85-95% valley bottoms.

20-FOOT RIDGETOP WINDS: Northwest 5-8 mph with gusts to 12 mph.

GREEN RIDGE CREEKS: Downslope/downcanyon 4-7 mph after 2000.

INVERSION/STABILITY: Moderate inversion.

CHANCE OF WETTING RAIN (≥ 0.10 "): 0%

SUNDAY:

WEATHER: Sunny with haze.

MAXIMUM TEMPERATURE: 70-75° above 5000 feet. 63-68° valley bottoms.

MINIMUM RELATIVE HUMIDITY: 29-35% above 5000 feet. 25-30% valley bottoms.

20-FOOT RIDGETOP WINDS: West-northwest 8-15 mph with gusts up to 25 mph in the afternoon.

GREEN RIDGE CREEKS: Light and variable becoming strong upslope/upcanyon in the afternoon. Valley/slope aligned.

INVERSION/STABILITY: Low level inversion will lift around 1000.

CHANCE OF WETTING RAIN (≥ 0.10 "): 0%. **HAINES INDEX: 3 (Low) **LAL:** 1**

Observations from the field are valuable!

Email any obs to david.shallenberger@noaa.gov or text them to 240-778-5019.

FIRE BEHAVIOR FORECAST

FORECAST NUMBER: 26	TYPE OF FIRE: Wildland Fire
FIRE NAME: Lick Creek & Green Ridge	OPERATIONAL PERIOD: 0600-2200 8/21/21
DATE ISSUED: 8/20/21	TIME ISSUED: 1900
UNIT: Umatilla NF OR-UMF-000658 & 000659	SIGNED: <i>Boyd Lebeda</i> FBAN Boyd_Lebeda@firenet.gov 303-916-1260

INPUTS

WEATHER SUMMARY – See attached Fire Weather Forecast

Fuel: Fuels in the fire area are primarily composed of Timber with Understory (Mixed Conifers with litter and shrubs), Timber with Litter (Conifers with dead/down/litter), and Grass with Shrubs (perennial grasses with brush). Fuels are generally discontinuous - broken up by rock outcrops, areas of grass and changes in aspect.

1000 hr fuels = 7% -- Eastern Washington and the Idaho panhandle are in Exceptional Drought. A rain event is welcome but it will take a series of rain events to reduce this serious drought episode.

Topography: Area topography for both fires includes steep slopes with multiple deep drainages. Elevations range from 3,300 to over 6,200 feet. Be alert for terrain alignment of fuel.

OUTPUTS

FIRE BEHAVIOR

General: Fire environment is moderated again today – cooler, higher relative humidity, lighter wind, cloudy with a chance of showers. Fire behavior will be notably less active. Sheltered fuels can still be dry enough to burn and potentially even produce torching. Spotting distances can be up to 500 feet. Probability of ignition is up to 20%

Green Ridge Fire:

All Divisions: The south flank has areas of open line that have been mostly checked up on Misery Ridge. Monitor for changes in observed fire behavior and smoke production.

Lick Creek Fire:

All Divisions: Be alert for threats to the control line.

AIR OPERATIONS

Smoky and/or cloudy conditions may limit air operations.

SAFETY – Assess Fuel Characteristics – Dry Mesic Montane Mixed Conifer Forest

(From: USDA Forest Service Gen. Tech. Rep. RMRS-GTR-292. 2012)

This fuel type occurs here in the Blue Mountains of Oregon and Washington - just above ponderosa type forests and below fir-dominated, mesic, mixed conifer forest types. Conifers present are ponderosa pine (often the dominant species), grand fir, Douglas-fir, and western larch.

Dry mixed conifer forests are disturbance-driven, meaning that combinations of disturbance collectively drive forest development, structure, and composition.

Historical fire regimes typically are low severity to mixed severity.

ASSIGNMENT LIST (ICS 204 WF)

CONTROLLED UNCLASSIFIED INFORMATION//BASIC

1. Incident Name:	2. Operational Period:	3. Branch	Division
LICK CREEK/GREEN RIDGE	Date From: 08/21/21 Date To: 08/21/21 Time From: 0600 Time To: 2200	I	K

4. Operations Personnel:	
Operations Section Chief: Shay Rogge	Branch Director: Jay Godson (T)
Planning Operations: Troy Mueller	Division/Group Supervisor: Nate Kerschner, Isaiah Jimenez (T)
Field Operations: Rodney Redinger	Safety: Rob Pelton, Eric White (T)

5. Resources Assigned:							
Resource Identifier	ALS	LWD	Leader	Personnel	Request #	Hours	Reporting Location
TFLD Nilson		8/25	Nilson	1	O-523	0600-2200	Dayton
TFLD(T) Livingston		8/26	Livingston	1	O-568	0600-2200	Dayton
ENG4 Ice Crescent		8/26	Freitag	3	E-285	0600-2200	Dayton
ENG6 Terrance Titus		8/26	Lambrecht	2	E-255	0600-2200	Dayton
WTT2 Christman Trucking GR		9/5	Blazek	1	E-2	0600-2200	Dayton
WTS2 Vegetation Solutions		8/27	Cole	2	E-299	0600-2200	Dayton
DO22 Alpine GR		9/2	Briggs	2	E-93	0600-2200	Dayton

6. Work Assignments:

Provide point protection for structures within the Division.
 Start pulling hose from lookout to Panjab Creek.
 Continue to improve where needed on 46 Road north of Godman staging to DP-220 DIV M break.
 Patrol and mop up from DP-220 to Godman staging and Godman staging to DP 260.

7. Special Instructions:

Adventure Medics (E-77) located at DP-240. Lead READ Will Marquardt: 530-402-6202

Operations will identify closest resources while DIVS identifies specific resources to respond to IA within TFR.
 Please ensure 3/32" fish screens are used at all draft sites in Panjab Creek, Touchet, and Tucannon Rivers.

8. Communications							
Name	Ch	Function	Rx Freq	Rx Tone	Tx Freq	Tx Tone	Notes
SEE ICS 205 COMM PLAN							

9. Prepared by: Name:	Kellie Stover, Amy Daniels, Rick Lancaster(T)	RESL	Signature:	
ICS 204	Date/Time: 8/20/2021 2200		Personnel Count: 12	

ASSIGNMENT LIST (ICS 204 WF)

CONTROLLED UNCLASSIFIED
INFORMATION//BASIC

1. Incident Name:	2. Operational Period:	3. Branch	Division
LICK CREEK/GREEN RIDGE	Date From: 08/21/21 Date To: 08/21/21 Time From: 0600 Time To: 2200	I	M/LICK

4. Operations Personnel:			
Operations Section Chief: Shay Rogge	Branch Director: Jay Godson (T)		
Planning Operations: Troy Mueller	Division/Group Supervisor: Chris Rokosh, Jeff Corser (T)		
Field Operations: Rodney Redinger	Safety: Rob Pelton, Eric White (T)		

5. Resources Assigned:							
Resource Identifier	ALS	LWD	Leader	Personnel	Request #	Hours	Reporting Location
TFLD(T) Dary		8/21	Dary	1	O-460	0600-2200	Rose Spike
HC2IA UMF Crew 3		8/21	Wagner	20	C-104	0600-2200	Rose Spike
FMOD Swedberg		8/22	Wadley	1	O-439	0600-2200	Rose Spike
ENG3 Prescott E-930		8/23	Langham	5	E-254	0600-2200	Rose Spike
ENG3 B-5232		8/26	Fry	4	E-256	0600-2200	Rose Spike
ENG3 Smokey Bear		8/29	Quirarte	6	E-257	0600-2200	Rose Spike
ENG4 Chewack LC		8/22	Starr	3	E-85	0600-2200	Rose Spike
ENG4 Inbound E18 GR		8/21	Navarro	3	E-161	0600-2200	Rose Spike
ENG4 Central Wildfire		8/27	Ward	3	E-259	0600-2200	Rose Spike
ENG4 AZ-IMR 2142		8/28	Linker	9	E-283	0600-2200	Rose Spike
ENG6 Eagle Cap		9/4	Rivera	2	E-284	0600-2200	Rose Spike
WTS3 JTS 1 GR		8/31	Elmer	1	E-170	0600-2200	Rose Spike
SOFR(T) Eric Adams		8/21	Adams	1	O-456	0600-2200	Rose Spike

6. Work Assignments:

Identify hose and pump locations for backhaul.
 Hold and mop-up from 40 Road to the DIV K/M break.
 Burnout islands as needed.
 Improve handlines where possible and secure spot fires north of DIV K/M containment lines.

7. Special Instructions:

REMS 10 (E-185) located at DP-17. Lead READ Will Marquardt: 530-402-6202

DIVS to identify equipment to be sent in an event of an IA within TFR. Operations will identify closest resources to respond to new incident.
 Please ensure 3/32" fish screens are used at all draft sites in Panjab Creek, Touchet, and Tucannon Rivers.

8. Communications							
Name	Ch	Function	Rx Freq	Rx Tone	Tx Freq	Tx Tone	Notes
SEE ICS 205 COMM PLAN							

9. Prepared by: Name:	Kellie Stover, Amy Daniels, Rick Lancaster(T)	RESL	Signature:
ICS 204	Date/Time: 8/20/2021 2200	Personnel Count:	59

ASSIGNMENT LIST (ICS 204 WF)

CONTROLLED UNCLASSIFIED
INFORMATION/BASIC

1. Incident Name:	2. Operational Period:	3. Branch	Division
LICK CREEK/GREEN RIDGE	Date From: 08/21/21 Date To: 08/21/21 Time From: 0600 Time To: 2200	II	P

4. Operations Personnel:	
Operations Section Chief: Shay Rogge	Branch Director: Deon Steinle (T)
Planning Operations: Troy Mueller	Division/Group Supervisor: Ian Barrett, Aaron Woodham (T)
Field Operations: Rodney Redinger	Safety: Rob Pelton, Eric White (T)

5. Resources Assigned:							
Resource Identifier	ALS	LWD	Leader	Personnel	Request #	Hours	Reporting Location
ENG6 Earth Industries		8/25	Voss	3	E-246	0600-2200	Rose Spike
ENG6 ASF E623		8/27	Holmes	6	E-275	0600-2200	Rose Spike
LOG Swanson Logging 1		8/31	Heitstamen	1	E-113	0600-2200	Rose Spike
LOG Swanson Logging 2		8/31	Dyer	1	E-114	0600-2200	Rose Spike
LOG Swanson Logging 3		8/31	Jared	1	E-115	0600-2200	Rose Spike
LOG Swanson Logging 4		8/31	Carter	1	E-116	0600-2200	Rose Spike
SOFR Welsh		8/26	Welsh	1	O-565	0600-2200	Rose Spike

6. Work Assignments:
 Monitor fire activity within the Division.
 Monitor fire activity on southern portion of Lick Fire.
 Remove logs from the fireline near H-7.

7. Special Instructions:
 Wilderness Medics (E-39) located at DP-62.

Lead READ Will Marquardt: 530-402-6202

8. Communications							
Name	Ch	Function	Rx Freq	Rx Tone	Tx Freq	Tx Tone	Notes
SEE ICS 205 COMM PLAN							

9. Prepared by: Name: Kellie Stover, Amy Daniels, Rick Lancaster(T) RESL Signature: _____

ICS 204 Date/Time: 8/20/2021 2200 Personnel Count: 14

ASSIGNMENT LIST (ICS 204 WF)

CONTROLLED UNCLASSIFIED
INFORMATION//BASIC

1. Incident Name:	2. Operational Period:	3. Branch	Division
LICK CREEK/GREEN RIDGE	Date From: 08/21/21 Date To: 08/21/21 Time From: 0600 Time To: 2200	II	S

4. Operations Personnel:	
Operations Section Chief: Shay Rogge	Branch Director: Deon Steinle (T)
Planning Operations: Troy Mueller	Division/Group Supervisor: Nick Collard, David Collins (T)
Field Operations: Rodney Redinger	Safety: Rob Pelton, Eric White (T)

5. Resources Assigned:							
Resource Identifier	ALS	LWD	Leader	Personnel	Request #	Hours	Reporting Location
TFLD Mondragon		8/21	Mondragon	1	O-421	0600-2200	Rose Spike
TFLD(T) Bateman		8/26	Bateman	1	O-569	0600-2200	Rose Spike
HC2 Grayback 9		8/29	Blanco	20	C-119	0600-2200	Rose Spike
WFM2 Metolius		8/31	Gregg	10	O-637	0600-2200	Rose Spike
SMOD Williams 7-1		8/25	Sweeney	10	O-520	0600-2200	Rose Spike
SMOD Slate Mtn		8/28	Alcantar-Torres	10	O-536	0600-2200	Rose Spike
WTS2 McDonald		8/24	McDonald	1	E-247	0600-2200	Rose Spike
HEQB Neugebauer		8/29	Neugebauer	1	O-570	0600-2200	Rose Spike
HEQB(T) Chris Carney		8/21	Carney	1	O-458	0600-2200	Rose Spike
DOZ3 Bruce Young GR		8/26	Miltonberger	2	E-85	0600-2200	Rose Spike
SOFR Welsh		8/26	Welsh	1	O-565	0600-2200	Rose Spike

6. Work Assignments:
Scout for potential control lines on west side of Grouse Flats area. Complete chipping operations along roadways identified as control line. Finish prepping structures at DP 73.

7. Special Instructions:
Frontline EMS (E-61) assigned to the Division.
Lead READ Will Marquardt: 530-402-6202

8. Communications							
Name	Ch	Function	Rx Freq	Rx Tone	Tx Freq	Tx Tone	Notes
SEE ICS 205 COMM PLAN							

9. Prepared by: Name:	Kellie Stover, Amy Daniels, Rick Lancaster(T)	RESL	Signature:	
ICS 204	Date/Time: 8/20/2021 2200			Personnel Count: 58

ASSIGNMENT LIST (ICS 204 WF)

CONTROLLED UNCLASSIFIED
INFORMATION//BASIC

1. Incident Name:	2. Operational Period:	3. Branch	Division
LICK CREEK/GREEN RIDGE	Date From: 08/21/21 Time From: 0600 Date To: 08/21/21 Time To: 2200	II	W

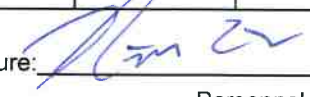
4. Operations Personnel:		Branch Director: Deon Steinle (T)
Operations Section Chief: Shay Rogge	Planning Operations: Troy Mueller	Division/Group Supervisor: Unstaffed
Field Operations: Rodney Redinger		Safety: Rob Pelton, Eric White (T)

5. Resources Assigned:							
Resource Identifier	ALS	LWD	Leader	Personnel	Request #	Hours	Reporting Location
TBD							

6. Work Assignments:

7. Special Instructions:

8. Communications							
Name	Ch	Function	Rx Freq	Rx Tone	Tx Freq	Tx Tone	Notes
SEE ICS 205 COMM PLAN							

9. Prepared by: Name:	Kellie Stover, Amy Daniels, Rick Lancaster(T)	RESL	Signature: 
ICS 204	Date/Time: 8/20/2021 2200		Personnel Count: 0

ASSIGNMENT LIST (ICS 204 WF)

CONTROLLED UNCLASSIFIED
INFORMATION//BASIC

1. Incident Name: LICK CREEK/GREEN RIDGE	2. Operational Period: Date From: 08/21/21 Date To: 08/21/21 Time From: 0600 Time To: 2200	3. Branch II	Division STRUCTURE
---	---	-------------------------------	-------------------------------------


4. Operations Personnel:	
Operations Section Chief: Shay Rogge	Branch Director: Deon Steinle (T)
Planning Operations: Troy Mueller	Division/Group Supervisor: Joe Tjaden
Field Operations: Rodney Redinger	Safety: Rob Pelton, Eric White (T)

5. Resources Assigned:							
Resource Identifier	ALS	LWD	Leader	Personnel	Request #	Hours	Reporting Location
TBD							

6. Work Assignments: Complete structure assessments in the Anatone area.
--

7. Special Instructions:

8. Communications							
Name	Ch	Function	Rx Freq	Rx Tone	Tx Freq	Tx Tone	Notes
SEE ICS 205 COMM PLAN							

9. Prepared by: Name: Kellie Stover, Amy Daniels, Rick Lancaster(T)	RESL	Signature: 	Date/Time: 8/20/2021 2200	Personnel Count: 0
---	------	--	---------------------------	--------------------

ASSIGNMENT LIST (ICS 204 WF)

CONTROLLED UNCLASSIFIED
INFORMATION//BASIC

1. Incident Name:	2. Operational Period:	3. Branch	Division
LICK CREEK/GREEN RIDGE	Date From: 08/21/21 Date To: 08/21/21 Time From: 0600 Time To: 2200	II	EAST CONTINGENCY

4. Operations Personnel:			
Operations Section Chief:	Shay Rogge	Branch Director:	Deon Steinle (T)
Planning Operations:	Troy Mueller	Division/Group Supervisor:	Unstaffed
Field Operations:	Rodney Redinger	Safety:	Rob Pelton, Eric White (T)

5. Resources Assigned:							
Resource Identifier	ALS	LWD	Leader	Personnel	Request #	Hours	Reporting Location
TBD							

6. Work Assignments:

7. Special Instructions:

8. Communications							
Name	Ch	Function	Rx Freq	Rx Tone	Tx Freq	Tx Tone	Notes
SEE ICS 205 COMM PLAN							

9. Prepared by: Name:	Kellie Stover, Amy Daniels, Rick Lancaster(T)	RESL	Signature:	Date/Time: 8/20/2021 2200	Personnel Count: 0
------------------------------	---	------	------------	---------------------------	--------------------

AIR OPERATIONS SUMMARY 220		Prepared By: Carolyn Blatz	Prepared: 08/20/2020	Prepared Time: 1900
1. INCIDENT NAME: Green Ridge / Lick Creek		2. OPERATIONAL PERIOD 8/21/2021		SUNRISE: 0600
		START TIME: 0730	END TIME: 2130	SUNSET: 1953

3. REMARKS (Safety Notes, Hazards, Air Operations Special Equipment, etc.):

Choosing a Landing Area

Locate a reasonably flat area clear of people, vehicles, and obstructions such as trees, poles, and overhead wires

4. READY ALERT AIRCRAFT:

IA: TBD
 Medivac: 3JR @ KALW
 Life Flight @ Walla Walla
 3JR Short Haul @ KALW

*Order through Communications
 See Medical Plan in the IAP*

5. TFR: 1/4930
 24 Hours
 12,000 MSL
 31 NM WNW of Walla Walla
 POC Frequency 119.5250

6. PERSONNEL	NAME	PHONE #	7. FREQUENCIES	AM	FM	8A. FIXED-WING Ordering
AOBD	Carolyn Blatz	720-693-3194	A/A (TFR)	119.5250		AIRTANKERS/LEAD PLANES: ATGS order through Dispatch
AOBD (T)	Matt Lingenfelter	805-705-8621 970-294-2213	A/A (Secondary)	123.7000		8B. Aerial Supervision / Personnel / Location
ASGS	Ken Ostrom	307-272-3266	A/G (Primary)		168.2750	AIR ATTACK Platforms: Order through Operations
ATGS	Craig Hall	970-799-1231	A/G (Secondary)		168.5250	ATGS N400DS (Craig Hall) Lewiston, Idaho
HEBM	Unstaffed		VMED 28		155.3400	
Blue Mountain Interagency Dispatch	AC Desk	541-963-7171	AIRGUARD		168.6250 TX 110.9	

9. HELICOPTERS

FAA N#	TY	MAKE/ MODEL	BASE	START	AVAIL	REMARKS	FAA N#	TY	MAKE/ MODEL	BASE	START	AVAIL	REMARKS
359EV	3	AS 350 B3	ALW	0730	0800	EU, Initial Attack, Bucket, Recon, Cargo	187CH	1	CH-46	ALW	0730	0800	CWN Bucket
353JR	3	AS 350 B3	ALW	0730	0800	EU, Initial Attack, Bucket, Recon, Cargo, Short Haul							



10. TASK/ MISSION/ ASSIGNMENT (Type/ function includes: Air Tactical, Retardant, Recon, Personnel Transport, Bucket Operations, SAR, etc.)				
TYPE/FUNCTION	PRIORITY	NAME OF PERSONNEL OR CARGO (If applicable) or instructions for tactical aircraft	FLY FROM	FLY TO
ATGS		Provide coverage as smoke or weather permits.	Lewiston, Idaho	Fire
Initial Attack		Support Initial Attack actions as requested.	TBD	IA
Medevac		**See Medical Plan in IAP – Review during Division Breakouts**	TBD	Fire
Water Drops		As needed and approved by Operations	Helibase	Fire
PSD/UAS Operations		As approved in the PSD/UAS plan, where and when needed, determined by Operations	TBD	Fire

Green Ridge Lick Creek Fire Costs:

Send All Aviation Costs to: 2021.greenridge.finance@firenet.gov
lickcreekhelibase@gmail.com & matt.lingenfelter@usda.gov

Wind Restrictions

Flights above ground level	Flight Permitted in Winds Less than / Maximum Gust Spread		
	Type 1 Helicopters <50kts / Gusts: N/A	Type 2 Helicopters <50kts / Gusts: N/A	Type 3 Helicopters <50kts / Gusts: N/A
More than 500' AGL	<40kts / Max Gust Spread: 15kts	<40 kts / Max Gust Spread: 15kts	<30kts / Max Gust Spread: 15kts
Less than 500' AGL			

Controlled Unclassified Information/Basic

Approved by: //s//: Carolyn Blatz, AOBD

CUI

INCIDENT RADIO COMMUNICATIONS PLAN I-205				1. INCIDENT NAME		2. DATE/TIME PREPARED		3. OPERATIONAL PERIOD DATE/TIME	
				GREEN RIDGE BR 1/N		08/15/21		8/21/21 0600 TO 2200	
4. BASIC RADIO CHANNEL UTILIZATION									
Ch #	Channel Name	Assignment	RX Frequency	RX Tone/NAC	TX Frequency	TX Tone/NAC	Mode Digital (D) Analog (A) Mixed (M)	Remarks	
1	TAC 1	DIV M	168.0500	151.4	168.0500	151.4	A	BR 1 TAC	
2	TAC 2	NIGHT	168.2000	151.4	168.2000	151.4	A	BR 1 TAC	
3	TAC 3	NORTH	168.6000	151.4	168.6000	151.4	A	BR 1 TAC	
4	TAC 4	DIV K	166.7250	151.4	166.7250	151.4	A	BR 1 TAC	
5	TAC 5	LICK	166.7750	151.4	166.7750	151.4	A	BR 1 TAC	
6	CMD 2	CMD 2	170.4125	131.8	165.9625	131.8	A	BR 1 CMD	
7	CMD 3	CMD 3	170.0250	131.8	165.4500	131.8	A	BR 1 CMD	
8	CMD 7	CMD 7	170.0000	151.4	166.6750	151.4	A	BR 1 CMD	
9	CMD 8	CMD 8	170.6875	151.4	166.5750	151.4	A	BR 1 CMD	
10	CMD 9	CMD 9	170.4250	151.4	168.0750	151.4	A	BR 1 CMD	
11	CMD 10	CMD 10	172.0250	151.4	162.1750	151.4	A	BR 1 CMD	
12	CMD 67	CMD 67	172.0750	151.4	162.2000	151.4	A	BR 1 CMD	
13	A/G PRI		168.2750		168.2750		A	A/G PRIMARY	
14	A/G SEC		168.5250		168.5250		A	A/G SECONDARY	
15	VMED 28		155.3400		155.3400		A	AIR MEDICAL	
16	AIRGUARD	EMERGENCY USE ONLY!	168.6250		168.6250	110.9	A	EMERGENCY USE ONLY!	
ICS-205 Prepared By:		JIM MIDYETT, COMML		CLONE VERSION: GBR1816N		ALWAYS POST A HUMAN REPEATER TO RELAY MESSAGES OUT OF AREAS WHERE YOU DONT HAVE ADEQUATE COMMUNICATIONS			
				DPH: PRESS & HOLD # KEY TO CHECK VERSION.					
				KNG: LOOK AT ZONE LABEL					

CUI

CUI

INCIDENT RADIO COMMUNICATIONS PLAN I-205				1. INCIDENT NAME	2. DATE/TIME PREPARED	3. OPERATIONAL PERIOD DATE/TIME		
				GREEN RIDGE BR 2/S	08/15/21	8/21/21 0600 TO 2200		
4. BASIC RADIO CHANNEL UTILIZATION								
Ch #	Channel Name	Assignment	RX Frequency	RX Tone/NAC	TX Frequency	TX Tone/NAC	Mode Digital (D) Analog (A) Mixed (M)	Remarks
1	TAC 7	DIV P	168.0500	131.8	168.0500	131.8	A	BR 2 TAC
2	TAC 8	DIV S	168.2000	131.8	168.2000	131.8	A	BR 2 TAC
3	TAC 9	DIV T	168.6000	131.8	168.6000	131.8	A	BR 2 TAC
4	TAC 10	DIV W	166.7250	131.8	166.7250	131.8	A	BR 2 TAC
5	TAC 11	E CONTIN	166.7750	131.8	166.7750	131.8	A	BR 2 TAC
6	TAC 12	STRUCTURE	168.2500	131.8	168.2500	131.8	A	BR 2 TAC
7	CMD 2	CMD 2	170.4125	131.8	165.9625	131.8	A	BR 2 CMD
8	CMD 3	CMD 3	170.0250	131.8	165.4500	131.8	A	BR 2 CMD
9	CMD 7	CMD 7	170.0000	151.4	166.6750	151.4	A	BR 2 CMD
10	CMD 8	CMD 8	170.6875	151.4	166.5750	151.4	A	BR 2 CMD
11	CMD 9	CMD 9	170.4250	151.4	168.0750	151.4	A	BR 2 CMD
12	CMD 11	CMD 11	172.5500	131.8	169.4500	131.8	A	BR 2 CMD
13	A/G PRI		168.2750		168.2750		A	A/G PRIMARY
14	A/G SEC		168.5250		168.5250		A	A/G SECONDARY
15	VMED 28		155.3400		155.3400		A	AIR MEDICAL
16	AIRGUARD	EMERGENCY USE ONLY!	168.6250		168.6250	110.9	A	EMERGENCY USE ONLY!
ICS-205 Prepared By:		JIM MIDYETT COML		CLONE VERSION: GBR2816S		ALWAYS POST A HUMAN REPEATER TO RELAY MESSAGES OUT OF AREAS WHERE YOU DONT HAVE ADEQUATE COMMUNICATIONS		
		DPH: PRESS & HOLD # KEY TO CHECK VERSION.		KNG: LOOK AT ZONE LABEL				

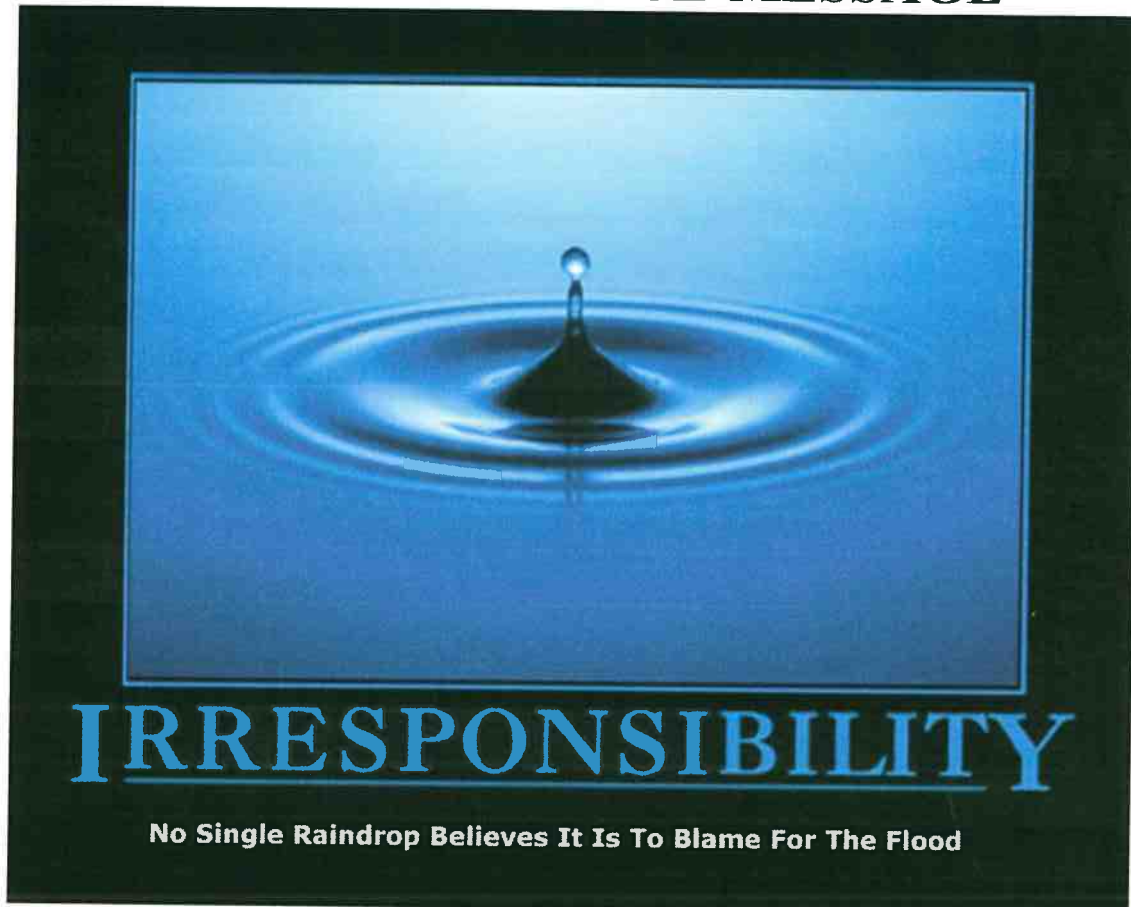
CUI

CUI

INCIDENT RADIO COMMUNICATIONS PLAN I-205		1. INCIDENT NAME	2. DATE/TIME PREPARED	3. OPERATIONAL PERIOD DATE/TIME				
		INITIAL ATTACK	08/15/21 1800	08/21/21 0600 TO 2200				
4. BASIC RADIO CHANNEL UTILIZATION								
Ch #	Channel Name	Assignment	RX Frequency	RX Tone/NAC	TX Frequency	TX Tone/NAC	Mode	Remarks
							Digital (D) Analog (A) Mixed (M)	
1	ST ASOTIN	LOCAL RPTR	159.4200	D365	151.2950	D365	A	6 MILES W OF ANATONE
2	COTTNWD	LOCAL RPTR	173.7750	131.8	164.8250	127.3	A	18 MILES SE OF POMEROY
3	SADDLE	LOCAL RPTR	173.7750	131.8	164.8250	146.2	A	29 MILES SE OF POMEROY
4	OREGON	LOCAL RPTR	173.7750	131.8	164.8250	167.9	A	25 MILES S OF POMEROY
5	DIAMOND	LOCAL RPTR	173.7750	131.8	164.8250	151.4	A	
6	COM	DNR TAC	151.4150	103.5	151.4150	103.5	A	
7	TAC 1	DNR TAC	151.3100	103.5	151.3100	103.5	A	
8	TAC 2	DNR TAC	151.3400	103.5	151.3400	103.5	A	
9	TAC 3	DNR TAC	151.3500	103.5	151.3500	103.5	A	
10	REDNET	TACTICAL	153.8300		153.8300		A	
11	UMF-TAC	TACTICAL	168.2375	131.8	168.2375	131.8	A	
12	A/G 1	LOCAL A/G	159.2700	103.5	159.2700	103.5	A	
13	A/G 9	LOCAL A/G	166.9125		166.9125		A	
14	A/G 44	LOCAL A/G	167.6250		167.6250		A	
15	VMED 28	A/G	155.3400		155.3400		A	
16	AIRGUARD	EMERGENCY USE ONLY!	168.6250		168.6250	110.9	A	EMERGENCY USE ONLY!
ICS-205 Prepared By:		JIM MIDYETT, COML	Current Clone Date	USE HUMAN REPEATERS TO HELP RELAY MESSAGES OUT OF LOCATIONS WHERE YOU DO NOT HAVE ADEQUATE RADIO COMMUNICATIONS				

CUI

GREEN RIDGE FIRE HUMAN RESOURCE MESSAGE



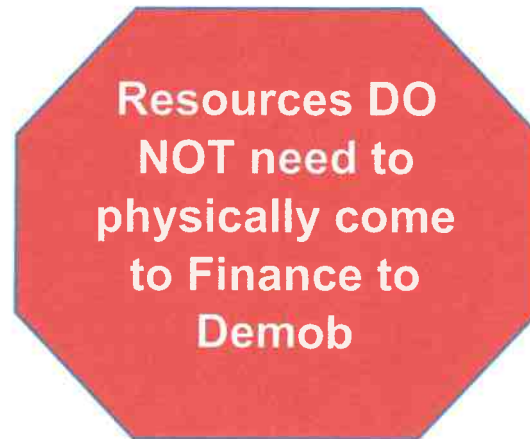
Each one of us counts. Each one of us are responsible for our own actions and attitudes.



If there is any way I can assist you, please do not hesitate to contact me.

**Your Human Resource Specialist
Mike Baines, 724-678-6147**

FINANCE DEMOB PROCEDURES



Please follow these steps for an electronic demobilization from finance:

1. Send final CTRs and Shift Tickets to 2021.greenridge.finance@firenet.gov
Please include an email address on your CTR/Shift ticket for final timesheet / invoice submission, and please include a phone number. Be sure to include your resource type (overhead, crew, equipment).
Make sure CTRs/Shift tickets are complete and legible to ensure accurate posting.
2. Finance will email a final timesheet (OF288) and/or Invoice (OF286) for review.
3. Please review and respond with a confirmation of accuracy. If there are errors or edits needed, inform finance asap by replying to the email.
4. Travel safely home without having to deal with finance in person!

*Finance is available at 971-245-0248 or 971-727-7461;
Comp/Claims at 541-969-2396*

TENTATIVE RELEASE DATES & TIMES

08/21/2021

CREWS

C-105 0600 (HC2I) NW - UMF VET CREW

EQUIPMENT

E-40 0600 Minam River
E-73 0600 R&K
E-77 0600 (UTV) ADVENTURE MEDICS GR
E-172 0600 JTS Construction
E-178 0600 Kiser & Kiser
E-185 0700 REMS UNIT - REMOTE ACCESS
E-241 0600 JLM

OVERHEAD

O-402 1300 (FACL) BROWN, DAVID DANIEL
O-411 0700 (REAF) MALSON, AARON JESSE
O-421 0630 (DIVS) MONDRAGON, PAUL
O-435 2200 (SEC2) DAVIS, CHARLES GORDON
O-442 0700 (FMOD) FALLER MODULE - ELLIOTT,
O-458 1300 (HEQB) CARNEY, CHRIS G
O-515 0600 (GISS) SINTON, DAVID T
O-567 0600 (SOF2) ROBERTS, LANCED

8/22/2021

CREWS

C-104 0600 (HC2I) NW - UMF #3

EQUIPMENT

E-91 1800 (WTS3) Delange
E-161 0600 (ENG4) ENGINE - T4 - INBOUND, E18

OVERHEAD

O-264 1400 (ABRO) BARTON, CHRISTOPHER
O-312 1700 (HECM) PAGE, ANTHONY D
O-363.16 1500 (COST) BOWEN, KRISTIE K
O-439 0630 (FMOD) FALLER MODULE - SWEDBERG
O-457 1100 (DIVS) COLLINS, DAVID J
O-460 0800 (TFLD) DARY, ROSS

Demob Tips

*****Note: If you have cell phone coverage and have nothing to return to Communications or Supply, you will not physically need to come to demob.*****

AIR TRAVELERS please contact or stop by demob 4 days prior to your demob date to confirm travel plans.

After being notified by your supervisor of your tentative release date:

1. Return all supplies, radios, etc. that were checked out. If you have no items to return, you can complete finance and demob virtually. All line vehicles must complete a WEED WASH and have a post-inspection of their vehicles.
2. Submit time for all personnel and equipment to Finance per directions in IAP.
3. Once you receive confirmation from FINANCE with a copy of your OF-288 and other financial documentation, you are free to complete Step 4 and travel home.
4. Complete demob Checkout Sheet using QR code on the cover of the IAP. If unable to use, see demob. Once demob receives confirmation from Finance and your demob checkout sheet has been electronically submitted, you will be released in the system.

Demob Unit email: 2021.greenridge.demob@firenet.gov 509-520-5968 ver.8-21

.....

Training Specialist Message/Training Process

You do not have to wait until the last work day to complete a position task book (PTB) evaluation. You can complete the evaluation process at any time on the incident. Trainees are not required to check in with the Incident Training Specialist (TNSP). However, Geographic Area Priority Trainee Program participants are strongly encouraged to check in with the TNSP. The TNSP is available to answer questions and/or help guide both the Trainee and Evaluator through the process.

1. Incident trainees should check in early with the TNSP either in person or remotely using the QR code on the IAP cover. Within that QR code exists a training portal.
2. The trainee needs to take ownership of their training assignment. Working closely with their evaluator, identify tasks and learning opportunities that can be documented in their PTB.
3. Ensure all the information is complete and correct on the Evaluation Record and, if being recommended for certification, the PTB Verification/Certification form. Incorrect or incomplete information is a very common issue in PTBs and, all too often, delays certification of a trainee as fully qualified. Please review all information to make sure it is complete, accurate, and legible.
4. The evaluator should complete an Incident Personnel Performance Rating (ICS 225 WF) for the trainee, and submit a copy to the TNSP either in person or a picture copy.
5. Once all the documentation is completed, the trainee will need to close out with the TNSP. The trainee can: 1) stop by and close out in person with TNSP; 2) call the TNSP to go through the Exit Interview Form and discuss how the assignment went; or 3) complete the Exit Interview Form through the QR code link.

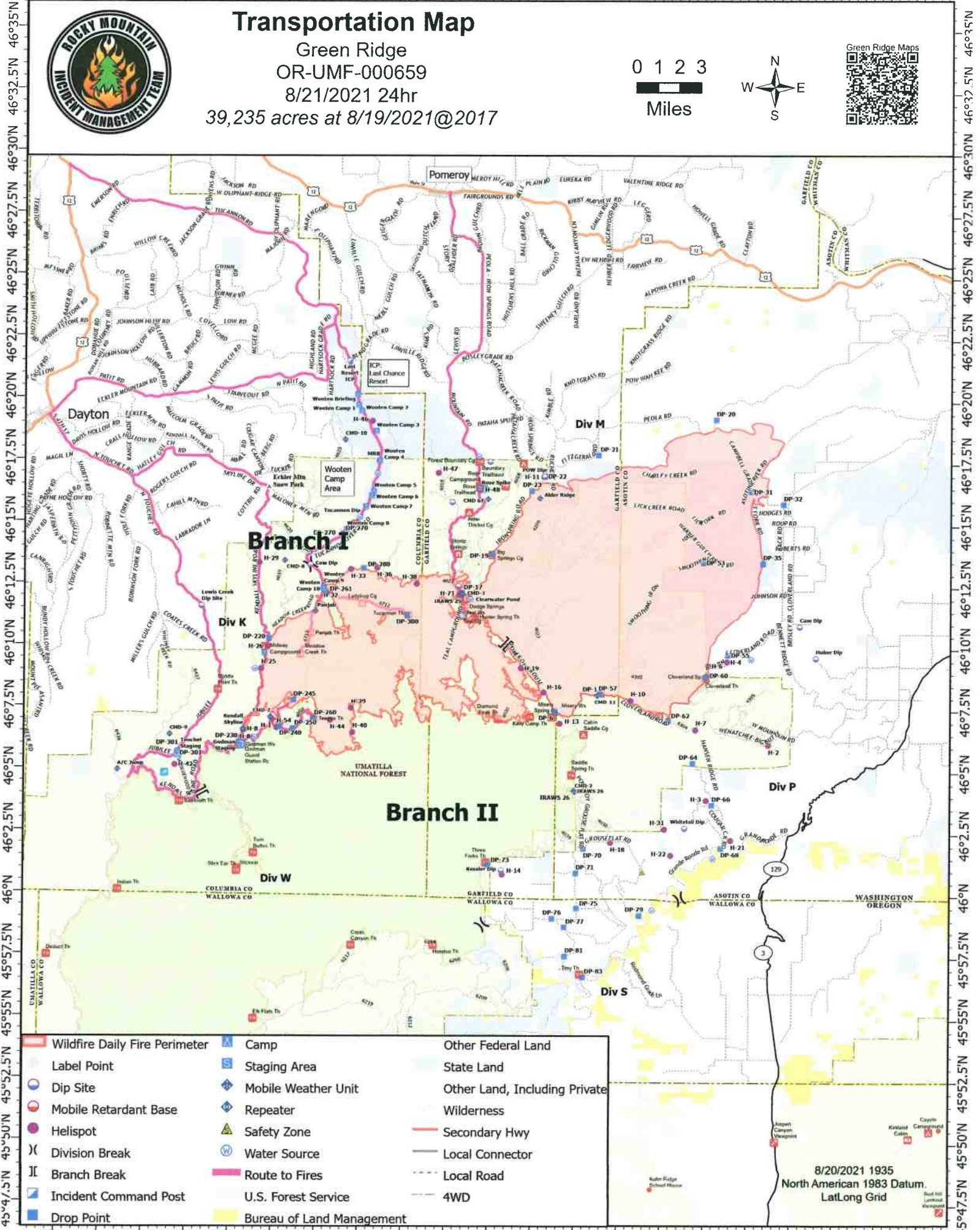
Incident Training Specialist email: 2021.greenridge.plans@firenet.gov 970-759-9610 ver.8-21

118°W 117°55'W 117°50'W 117°45'W 117°40'W 117°35'W 117°30'W 117°25'W 117°20'W 117°15'W 117°10'W



Transportation Map

Green Ridge
OR-UMF-000659
8/21/2021 24hr
39,235 acres at 8/19/2021@2017



- Wildfire Daily Fire Perimeter
- Camp
- Staging Area
- Dip Site
- Mobile Weather Unit
- Mobile Retardant Base
- Helispot
- Division Break
- Branch Break
- Incident Command Post
- Drop Point
- Safety Zone
- Water Source
- Route to Fires
- Bureau of Land Management
- Other Federal Land
- State Land
- Other Land, Including Private
- Wilderness
- Secondary Hwy
- Local Connector
- Local Road
- 4WD

8/20/2021 1935
North American 1983 Datum.
Lat/Long Grid

45°47.5'N 45°50'N 45°52.5'N 45°55'N 45°57.5'N 46°N 46°2.5'N 46°5'N 46°7.5'N 46°10'N 46°12.5'N 46°15'N 46°17.5'N 46°20'N 46°22.5'N 46°25'N 46°27.5'N 46°30'N 46°32.5'N 46°35'N



Rocky Mountain IMT Black



Line Supply Order

Date & Time Order was Placed	Order # (BR+DIVS + #)	Location & Time for Delivery (Division/LZ/DP/Lat Long)	Mode of delivery (Driven/Helo/DIVS to Pick up)

Order received in Communications by (name & time):

Order received in Supply by (name & time):

Order received in Transportation by (name & time):

Order received in Helibase by (name & time):

Order shipped to line unit by (name & time): (Send this sheet to the line with the order)

#	Item	Amount		Item	Amount
1.	Meals, Breakfasts	ea	30.	Slingable Blivet	ea
2.	Meals, Lunches	ea	31.	Folding Tank, specify size	ea
3.	Meals, Dinners	ea	32.	Lightweight Pump Kit (Cache)	ea
4.	Meals, MRE's	cs	33.	Hose, 1 1/2"	ea
5.	Water, 5 gal. cubic	ea	34.	Hose, 1"	ea
6.	Batteries- AA	1-Flat	35.	Hose, 3/4"	ea
7.	Batteries, Specify Type	pk	36.	Reducer, 1 1/2" x 1"	ea
8.	Flagging, Specify type	roll	37.	Reducer, 1" x 3/4"	ea
9.	Gas, raw	gal	38.	Gated "Y", 1 1/2"	ea
10.	Bar Oil	gal	39.	Gated "Y", 1"	ea
11.	2- cycle oil, chainsaw (2.5 oz)	6 pk	40.	Gated "Y" 3/4 "	ea
12.	Sleeping Bags	ea	41.	Shut-off Valve, "	ea
13.	Gatorade	cs	42.	In-line Tee, 1 1/2" x 1"	ea
14.	Tarps / Plastic	roll	43.	Nozzle, 1 1/2"	ea
15.	Parachute Cord	roll	44.	Nozzle, 1"	ea
16.	Tool, Shovel	ea	45.	Nozzle, 3/4"	ea
17.	Too I, Pulaski	ea	46.	20 Man First Aid Kit	ea
18.	Tool, Combi	ea	47.	Chainsaw Kit	ea
19.	Tool, McLeod	ea	48.	Toilet Paper (96 per case)	cs
20.	Tool, Specify Type	ea	49.	1000 ft. Hose Lay Kit	ea
21.	Fusee	cs	50.	Garbage Bags	bx
22.	Drip Torch	ea	51.	Leadline	ea
23.	Drip Torch Mix, 5 gal.	ea	52.	Spike Supply Kit	ea
24.	Coffee Kit w/propane	ea	53.	Dolmar (6 per case)	ea
25.	Swivel	ea	54.	Sprinkler Kit	ea
26.	Backpack Pump	ea	55.	LINE Spike Supply Kit	ea
27.	Pumpkin, specify size	ea	56.	Duct Tape	roll
28.	Mark 3 Pump Kit w/fuel	ea	57.	House Wrap	roll
29.	2-cycle oil, high pressure pump	qt	58.	Staple Gun w/ staples	ea

Team Ordering/Timeline Process:

- 0630 - Morning Briefing, start of crew time.
 1100 - Last call to change spike camp resource hot food location.
 1600 - *DIVS* to have next day's resource order ready for Planning OPS.
- All crew level orders will be placed through *DIVS* or Branch.
 - *DIVS* or Branch will place all orders through Communications Unit.
 - All orders will be tracked using the process found on the front of this form.

GPS Datum: NAD 83- Degrees, Decimal, Minutes (DDMM.MM)

Definitions

FOB-Forward Operating Base is a secure forward position established to strategize, design and discuss tactics, and for personnel to transfer information and meet.

Line Spike Camp-Managed by Operations at the *DIVS* level; mobile, short duration and self- sufficient.

Spike Camp-Supported by Logistics, listed in the IAP, numbers in camp are set by 1100, named by Plans.

Emergency Medevac- Life threatening situation requiring immediate medical attention. Handled as per IAP med plan and team SOP's. Communications to clear command channel radio traffic.

Medical Transport-Transport of less serious injury/illness managed by Operations or line Medics back to camp for evaluation and/or treatment.

1000 ft. Hose Lay Kit (Order as "#49")				Spike Supply Kit (Order as "#52")			
Quantity	NFES#	Item	Weight	Quantity	NFES#	Item	Weight
10 ea	1239	Hose 1½"	125 lbs	2 rolls	0071	Duct Tape	4 lbs
10 ea	1238	Hose 1"	84 lbs	4 rolls	0222	Fiber Tape	2lbs
20 ea	1016	Hose ¾"	25 lbs	1 case	0021	Trash Bags	21 lbs
5 ea	0231	1½" Gated "Y"	20 lbs	1 case	0465	Cups for hot liquid	18 lbs
5 ea	0259	1" Gated "Y"	13 lbs	2 ea	0070	16x24 Tent fly	40 lbs
10 ea	0904	¾" Gated "Y"	3 lbs	3 ea	0027	Water Wash Basins	2 lbs
5 ea	0010	Reducers 1½" - 1"	3 lbs	1 case		Liquid Hand Soap / pump	10 lbs
5 ea	0733	Reducers 1" - ¾"	2 lbs	18 cases	1842	MRE's	18 x 20= 360 lbs
10 ea	0738 or 0835	Ball Valve ¾"	5 lbs	48 ea	0022	Sleeping bags (dbl. bag)	48 x 5= 240 lbs
10 ea	0138	Nozzle, 1"	5 lbs	3 cases	0030	AA Batteries, 24 pkg./case	90 lbs
10 ea	0136	Nozzle ¾"	5 lbs	1case	0240	Paper Towels	41 lbs
5 ea	0230	Tee 1½x1½x1"/valve	5 lbs	1 case	0142	Toilet Paper	44 lbs
LINE Spike Supply Kit (Order as "#55")				1roll	0144	Plastic sheeting	45 lbs
				1 roll	0533	P-Cord	9 lbs
Quantity	NFES#	Item	Weight	20 ea	7443	Cubies, 5 gal. Full Potable Water	20 x 40= 800 lbs
20+0H	0022	Sleeping bags	20 x 5= 100 lbs	1 box	1059	12" Bastard Files	9lbs
20 ea	7443	Cubies, 5 gal Full	20x40= 800 lbs	1 ea	3444	2-cycle mix, chainsaw (6 pk 2.5 oz)	2lbs
18 cases	1842	MRE's	18x20=360 lbs	8 gal	1880	Bar Oil	64 lbs
1 sl	0533	P-Cord	9 lbs	15 gal		Regular Gas	120 lbs
3 cases	0030	AA Batteries, 24 pkg./case	90 lbs	1 can		3 lbs. can coffee	3 lbs
1 case	0021	Trash bags	21 lbs	1 ea		2 1/2 gal coffee pot or 3-1 gal	10 lbs
10 rolls	0142	Toilet paper	3 lbs	2ea	0089	Ridge pole	46 lbs
1 roll	0144	Plastic sheeting	45 lbs	12 ea	0083	Pole upright	89 lbs
2 rolls	0222	Fiber Tape	2 lbs	24 ea	0825	Stake Tent	24 lbs
1 ea	3444	2-cycle mix, chain-saw (6 pk 2.5 oz)	2 lbs				
4 gal	1880	Bar Oil	32 lbs				
15 gal		Regular Gas	120 lbs				
1 box	1059	12" Bastard Files	9 lbs				

Green Ridge COVID Protocols

1. If you are having any COVID Symptoms but not limited to example below:
 - a. Fever
 - b. Cough
 - c. Headache
 - d. Muscle aches
 - e. Sore throat
 - f. Fatigue
 - g. Diarrhea/GI
 - h. Loss of smell
 - i. Loss of taste
2. Let your immediate supervisor know.
3. Call the COVID Hotline ASAP (971-245-9407) 24/7
4. Self-isolate
5. Stay-away from people
6. Wear a Mask
7. Wait for the COVID Task Force to make recommendations.

COVID GUIDELINES

MASKS ARE REQUIRED:

BRIEFINGS.

CAN'T MAINTAIN 6FT SOCIAL DISTANCING OUTSIDE.
INDOORS.

VEHICLES. (Example: More than one person in vehicle)

MASK WEARING EXCEPTION:

ALONE IN AN ENCLOSED SPACE. (Example: One person in Vehicle)

ACTIVELY ENGAGED IN FIREFIGHTING ON THE FIRELINE.

OUTSIDE AND CAN MAINTAIN 6FT APART.

EATING OR DRINKING (6FT SOCIAL DISTANCE)



NWCG screening Tool

PLEASE CONTACT THE GREEN RIDGE COVID
HOTLINE IF YOU HAVE ANY QUESTIONS ABOUT COVID, SYMPTOMS,
AND OR *FREE TESTING*.

GREEN RIDGE COVID HOTLINE # 971-245-9407

MEDICAL PLAN (ICS 206 WF)

1. Incident/Project Name				2. Operational Period							
Lick Creek / Green Ridge Fires				08/21/2021 0600-2200							
3. Ambulance Services											
Name		Complete Address		Phone & EMS Frequency		Advanced Life Support (ALS) Yes No					
Lewiston Fire Department		1245 Idaho St. Lewiston, Idaho 83501		Dial 911		X					
Columbia County Fire District # 3		111 Patit Road, Dayton, WA 99328		Dial 911		X					
4. Air Ambulance Services											
Name		Phone		Type of Aircraft & Capability							
Lifeflight - Lewiston		(800)232-0911		Bell 407 – ALS, Night Vision							
Lifeflight - Walla Walla		(800)232-0911		AW 119 – ALS, Night Vision							
353JR		Contact Air Ops		AS-350B3 - Short Haul							
5. Hospitals											
Name Complete Address		Degrees Decimal Minutes DD° MM.MMM' N - Lat DD° MM.MMM' W - Long		Travel Time Air Gnd		Phone		Helipad Yes No		Level of Care Facility	
Legacy Emanuel Medical CTR 2801 North Gantenbein Avenue Portland, OR 97227		Lat: 45° 32.666' N		5 hours 2.5 hours		(503)494-7333		<input checked="" type="checkbox"/> <input type="checkbox"/>		Level 1 Trauma Center Burn Center	
		Long: 122° 40.283' W									
Sacred Heart Medical Center 101 W 8 th Avenue Spokane, WA 99204		Lat: 47° 38.933' N		2 hours 30 min		(509)474-3342		<input checked="" type="checkbox"/> <input type="checkbox"/>		Level 2 Trauma Center	
		Long: 117° 24.766' W									
St. Joseph Regional Medical CTR 415 6 th Street Lewiston, ID 83501		Lat: 46° 25.000' N		1 hour 20 min		(208)799-5799		<input checked="" type="checkbox"/> <input type="checkbox"/>		Level 3	
		Long: 117° 1.433' W									
St. Mary Medical Center 401 West Poplar Street Walla Walla, WA 99362		Lat: 46° 3.666' N		1 hour 20 min		(509)897-2500		<input checked="" type="checkbox"/> <input type="checkbox"/>		Level 3	
		Long: 118° 20.666' W									
6. Division Branch Group			Area Location Capability								
K			EMS Responders & Capability:			Medic 23 Waggoner					
			Equipment Available on Scene:			ALS, BLS, AED, Stokes Litter, SKED, UTV					
			Medical Emergency Channel:			G/G BR 1/N COMMAND , TAC 4			A/G VMED 28		
			ETA for Ambulance to Scene:								
			Approved Helispot:			H-32		H-26		H-8	
			Lat:			46° 12.372 N		46° 10.009 N		46° 06.609 N	
			Long:			117° 42.478 W		117° 45.666 W		117° 47.003 W	
M/Lick			EMS Responders & Capability:			AMBO 6 REM 10 Mack					
			Equipment Available on Scene:			Ambulance 4x4 truck, ALS, Cardiac Monitor, Stokes Litter, UTV					
			Medical Emergency Channel:			G/G BR 1/N COMMAND , TAC 1			A/G VMED 28		
			ETA for Ambulance to Scene:								
			Approved Helispot:			H-11		H-71		H-10	
			Lat:			46° 16.967 N		46° 12.240 N		46° 07.929 N	
			Long:			117° 29.687 W		117° 34.392 W		117° 24.472 W	
P			EMS Responders & Capability:			Shared resources with other Divisions					
			Equipment Available on Scene:								
			Medical Emergency Channel:			G/G BR 2/S COMMAND , TAC 7			A/G VMED 28		
			ETA for Ambulance to Scene:								
			Approved Helispot:			H-2		H-7		H-21	
			Lat:			46° 06.146 N		46° 06.750		46° 02.294 N	
			Long:			117° 16.429 W		117° 20.670		117° 18.563 W	

MEDICAL PLAN (ICS 206 WF)

S	EMS Responders & Capability:	Ambo 4 Sloat		
	Equipment Available on Scene:	Ambulance 4x4, ALS, BLS, Cardiac Monitor, AED		
	Medical Emergency Channel:	G/G BR 2/S COMMAND , TAC 8	A/G VMED 28	
	ETA for Ambulance to Scene:			
	Approved Helispot:	H-18	H-14	
	Lat:	46 ° 02.183 N	46 ° 00.862 N	
	Long:	117 ° 25.558 W	117 ° 31.845 W	
W	EMS Responders & Capability:	Shared resources with other Divisions		
	Equipment Available on Scene:			
	Medical Emergency Channel:	G/G BR 2/S COMMAND , TAC 10	A/G VMED 28	
	ETA for Ambulance to Scene:			
	Approved Helispot:			
	Lat:	°	°	°
	Long:	°	°	°
Name & Location	Remote Camp Location(s)			
ICP	EMS Responders & Capability:	AMBO 7, EMTP VanGurp, EMTF Bohrer, EMTF Brandy		
	Equipment Available on Scene:	Ambulance 2x2 truck, BLS, AED		
	Medical Emergency Channel:	BR 1/N COMMAND	A/G VMED 28	
	ETA for Ambulance to Scene:			
	Approved Helispot:	H-46		
	Lat:	46 ° 19.169 N		
	Long:	117 ° 39.739 W		
Rose Spike	EMS Responders & Capability:	NIGHT - AMBO 6		
	Equipment Available on Scene:	Ambulance 4x4 truck, ALS, Cardiac Monitor, Stokes Litter, UTV		
	Medical Emergency Channel:	G/G BR 1/N COMMAND , TAC 1	A/G VMED 28	
	ETA for Ambulance to Scene:			
	Approved Helispot:			
	Lat:	°	°	°
	Long:	°	°	°
Grouse Flats Spike	EMS Responders & Capability:			
	Equipment Available on Scene:			
	Medical Emergency Channel:	G/G BR 2/S COMMAND , TAC 8	A/G VMED 28	
	ETA for Ambulance to Scene:	H-18		
	Approved Helispot:	46 ° 02.183 N	°	°
	Lat:	117 ° 25.558 W	°	°
	Long:			
1. Prepared By (Medical Unit Leader)	2. Date/Time	3. Reviewed By (Safety Officer)	4. Date/Time	
Lionel Van Gurp MEDL(t) Stephanie McGovern MEDL(t)	8/20/2021 1800	Rob Pelton SOF2 Pat Medina SOF2 Eric White SOF2(t)	8/20/2021 1800	

MEDICAL PLAN (ICS 206 WF)

Controlled Unclassified Information//Basic

Medical Incident Report

FOR A NON-EMERGENCY INCIDENT, WORK THROUGH CHAIN OF COMMAND TO REPORT AND TRANSPORT INJURED PERSONNEL AS NECESSARY.

FOR A MEDICAL EMERGENCY: IDENTIFY ON SCENE INCIDENT COMMANDER BY NAME AND POSITION AND ANNOUNCE "MEDICAL EMERGENCY" TO INITIATE RESPONSE FROM IMT COMMUNICATIONS/DISPATCH.

Use the following items to communicate situation to communications/dispatch.

1. **CONTACT COMMUNICATIONS / DISPATCH** (Verify correct frequency prior to starting report) *Ex: "Communications, Div. Alpha. Stand-by for Emergency Traffic."*
2. **INCIDENT STATUS:** Provide incident summary (including number of patients) and command structure.
Ex: "Communications, I have a Red priority patient, unconscious, struck by a falling tree. Requesting air ambulance to Forest Road 1 at (Lat./Long.) This will be the Trout Meadow Medical, IC is TFLD Jones. EMT Smith is providing medical care."

Severity of Emergency / Transport Priority	<input type="checkbox"/> RED / PRIORITY 1 Life or limb threatening injury or illness. Evacuation need is IMMEDIATE <i>Ex: Unconscious, difficulty breathing, bleeding severely, 2° – 3° burns more than 4 palm sizes, heat stroke, disoriented.</i> <input type="checkbox"/> YELLOW / PRIORITY 2 Serious Injury or illness. Evacuation may be DELAYED if necessary. <i>Ex: Significant trauma, unable to walk, 2° – 3° burns not more than 1-3 palm sizes.</i> <input type="checkbox"/> GREEN / PRIORITY 3 Minor Injury or illness. Non-Emergency transport <i>Ex: Sprains, strains, minor heat-related illness.</i>	
Nature of Injury or Illness & Mechanism of Injury		<i>Brief Summary of Injury or Illness (Ex: Unconscious, Struck by Falling Tree)</i>
Transport Request		<i>Air Ambulance / Short Haul/Hoist Ground Ambulance / Other</i>
Patient Location		<i>Descriptive Location & Lat. / Long. (WGS84)</i>
Incident Name		<i>Geographic Name + "Medical" (Ex: Trout Meadow Medical)</i>
On-Scene Incident Commander		<i>Name of on-scene IC of Incident within an Incident (Ex: TFLD Jones)</i>
Patient Care		<i>Name of Care Provider (Ex: EMT Smith)</i>

3. INITIAL PATIENT ASSESSMENT: Complete this section for each patient as applicable (start with the most severe patient)

Patient Assessment: See IRPG page 106

Treatment:

4. TRANSPORT PLAN:

Evacuation Location (if different): (Descriptive Location (drop point, intersection, etc.) or Lat. / Long.) Patient's ETA to Evacuation Location:

Helispot / Extraction Site Size and Hazards:

5. ADDITIONAL RESOURCES / EQUIPMENT NEEDS:

Example: Paramedic/EMT, Crews, Immobilization Devices, AED, Oxygen, Trauma Bag, IV/Fluid(s), Splints, Rope rescue, Wheeled litter, HAZ MAT, Extrication

6. COMMUNICATIONS: Identify State Air/Ground EMS Frequencies and Hospital Contacts as applicable

Function	Channel Name/Number	Receive (RX)	Tone/NAC *	Transmit (TX)	Tone/NAC *
COMMAND					
AIR-TO-GRND					
TACTICAL					

7. CONTINGENCY: Considerations: If primary options fail, what actions can be implemented in conjunction with primary evacuation method? Be thinking ahead.

8. ADDITIONAL INFORMATION: Updates/Changes, etc.

REMEMBER: Confirm ETA's of resources ordered. Act according to your level of training. Be Alert. Keep Calm. Think Clearly. Act Decisively.



ACTIVITY LOG (ICS 214)

1. Incident Name: _____	2. Operational Period: Date From: _____ Date To: _____ Time From: _____ Time To: _____
--------------------------------	--

3. Name: _____	4. ICS Position: _____	5. Home Agency (and Unit): _____
-----------------------	-------------------------------	---

6. Resources Assigned:		
Name	ICS Position	Home Agency (and Unit)

7. Activity Log:	
Date/Time	Notable Activities

8. Prepared by: Name: _____	Position/Title: _____	Signature: _____
ICS 214, Page 1	Date/Time: _____	





ACTIVITY LOG (ICS 214)

1. Incident Name:	2. Operational Period: Date From:	Date To:
	Time From:	Time To:

3. Name:	4. ICS Position:	5. Home Agency (and Unit):
----------	------------------	----------------------------

6. Resources Assigned:		
Name	ICS Position	Home Agency (and Unit)

7. Activity Log:	
Date/Time	Notable Activities

8. Prepared by: Name: _____	Position/Title: _____	Signature: _____
ICS 214, Page 1	Date/Time: _____	

