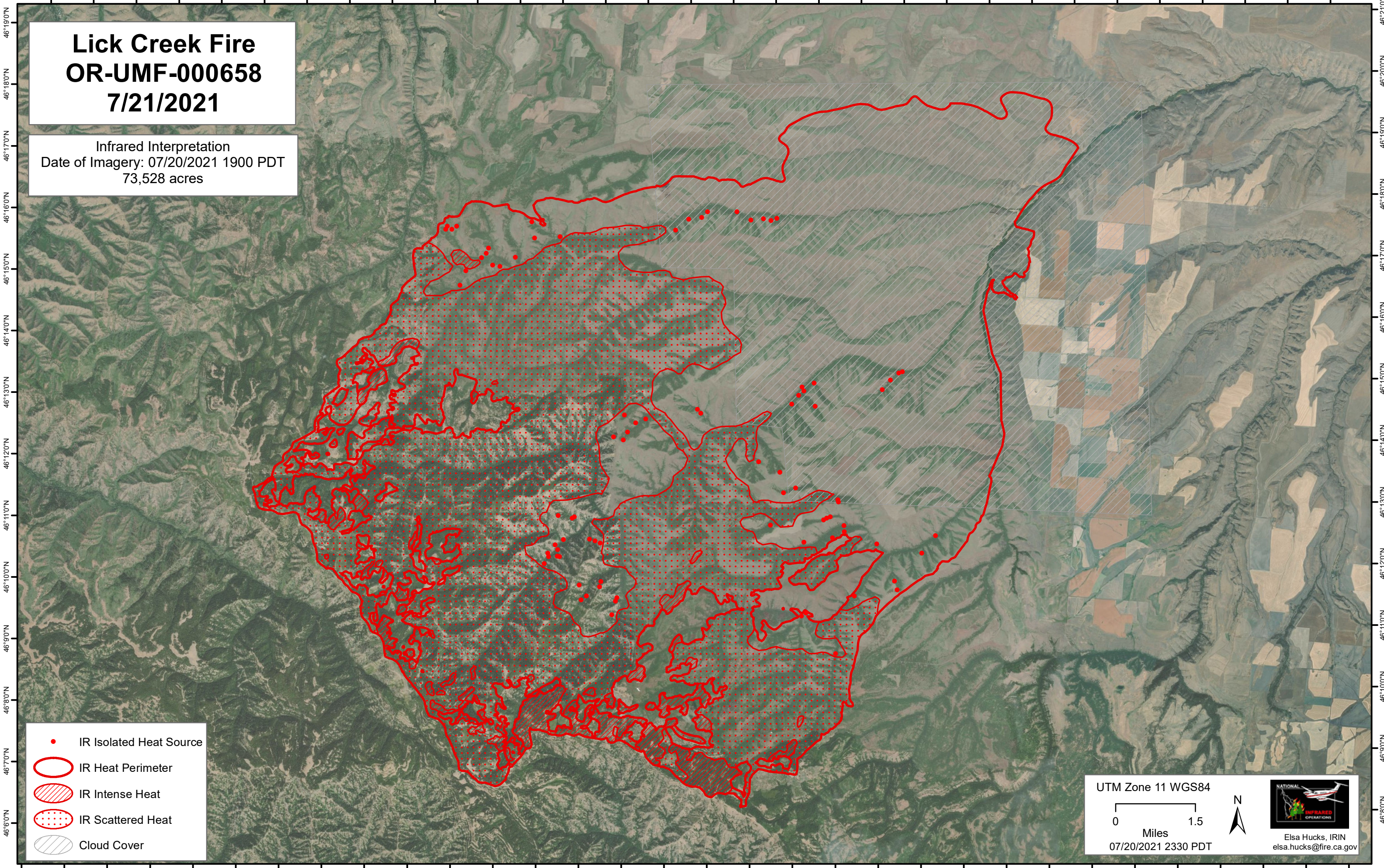


117°40'0"W 117°39'0"W 117°38'0"W 117°37'0"W 117°36'0"W 117°35'0"W 117°34'0"W 117°33'0"W 117°32'0"W 117°31'0"W 117°30'0"W 117°29'0"W 117°28'0"W 117°27'0"W 117°26'0"W 117°25'0"W 117°24'0"W 117°23'0"W 117°22'0"W 117°21'0"W 117°20'0"W 117°19'0"W 117°18'0"W 117°17'0"W 117°16'0"W 117°15'0"W 117°14'0"W 117°13'0"W 117°12'0"W 117°11'0"W 117°10'0"W

Lick Creek Fire OR-UMF-000658 7/21/2021

Infrared Interpretation
Date of Imagery: 07/20/2021 1900 PDT
73,528 acres



- IR Isolated Heat Source
- IR Heat Perimeter
- IR Intense Heat
- IR Scattered Heat
- Cloud Cover

UTM Zone 11 WGS84
0 1.5
Miles
07/20/2021 2330 PDT



Elsa Hucks, IRIN
elsa.hucks@fire.ca.gov

117°39'0"W 117°38'0"W 117°37'0"W 117°36'0"W 117°35'0"W 117°34'0"W 117°33'0"W 117°32'0"W 117°31'0"W 117°30'0"W 117°29'0"W 117°28'0"W 117°27'0"W 117°26'0"W 117°25'0"W 117°24'0"W 117°23'0"W 117°22'0"W 117°21'0"W 117°20'0"W 117°19'0"W 117°18'0"W 117°17'0"W 117°16'0"W 117°15'0"W 117°14'0"W 117°13'0"W 117°12'0"W 117°11'0"W 117°10'0"W 117°9'0"W 117°8'0"W