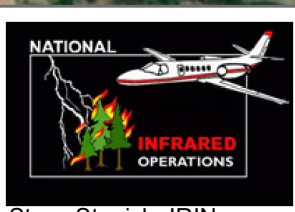
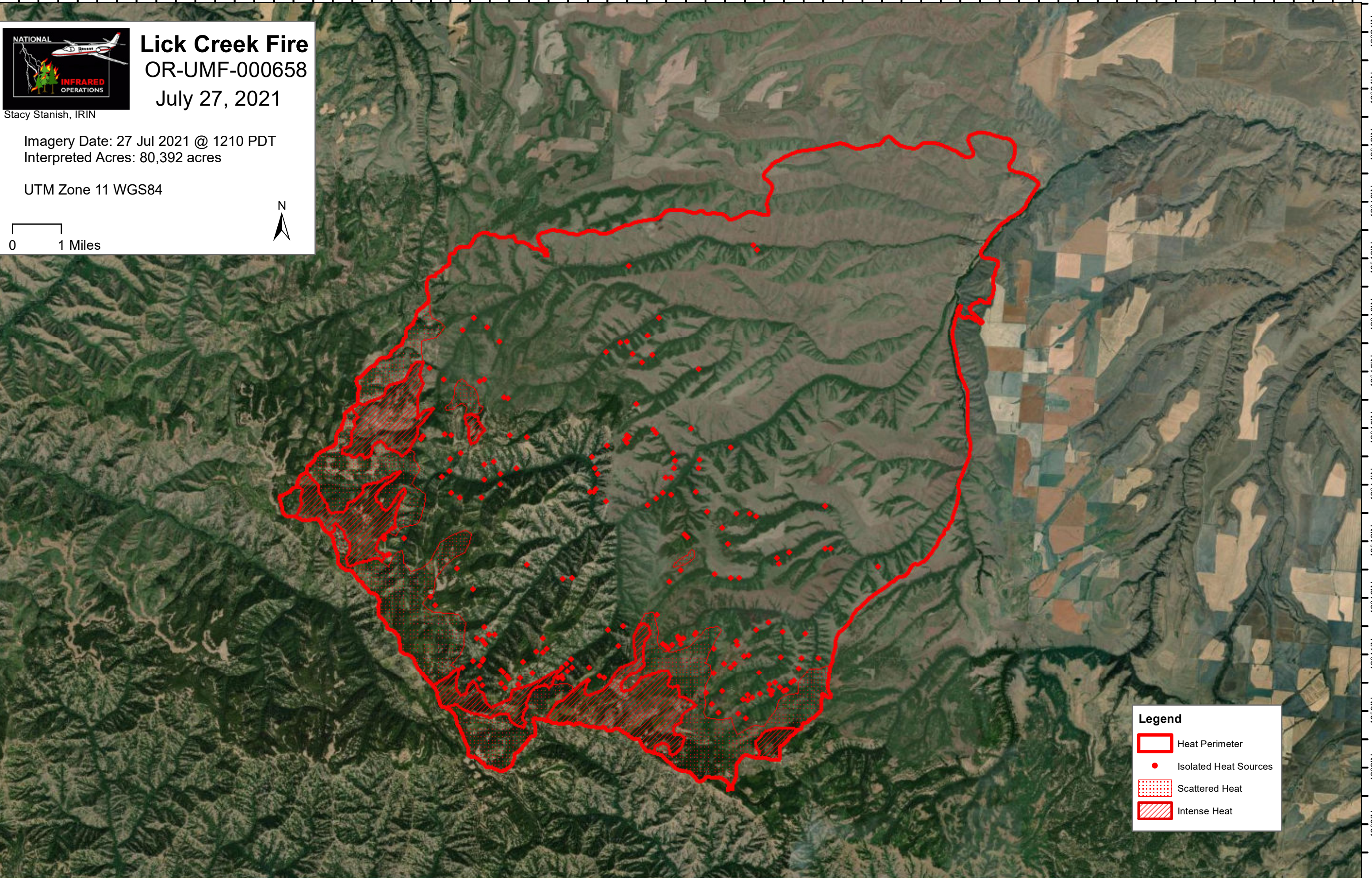


117°42'W 117°41'W 117°39'W 117°38'W 117°36'W 117°34'W 117°33'W 117°31'W 117°30'W 117°29'W 117°27'W 117°26'W 117°24'W 117°23'W 117°21'W 117°19'W 117°18'W 117°16'W 117°15'W 117°14'W 117°12'W 117°11'W 117°9'W 117°8'W



Lick Creek Fire

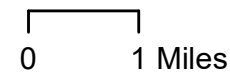
OR-UMF-000658

July 27, 2021



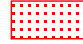

Stacy Stanish, IRIN

Imagery Date: 27 Jul 2021 @ 1210 PDT
Interpreted Acres: 80,392 acres

UTM Zone 11 WGS84



Legend

-  Heat Perimeter
-  Isolated Heat Sources
-  Scattered Heat
-  Intense Heat

117°41'W 117°39'W 117°38'W 117°36'W 117°34'W 117°33'W 117°31'W 117°30'W 117°29'W 117°27'W 117°26'W 117°24'W 117°23'W 117°21'W 117°19'W 117°18'W 117°16'W 117°15'W 117°14'W 117°12'W 117°11'W 117°9'W 117°7'W

46°20'N
46°19'N
46°18'N
46°17'N
46°16'N
46°15'N
46°14'N
46°13'N
46°12'N
46°11'N
46°10'N
46°9'N
46°8'N
46°7'N
46°6'N
46°5'N

46°21'N
46°21'N
46°19'N
46°18'N
46°18'N
46°16'N
46°15'N
46°15'N
46°14'N
46°12'N
46°12'N
46°11'N
46°9'N
46°9'N
46°8'N