

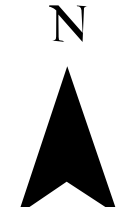
OPS IR

Lick Creek
July, 14 2021 day

Appx 63,533 ac at
7/14/2021 @ 0105

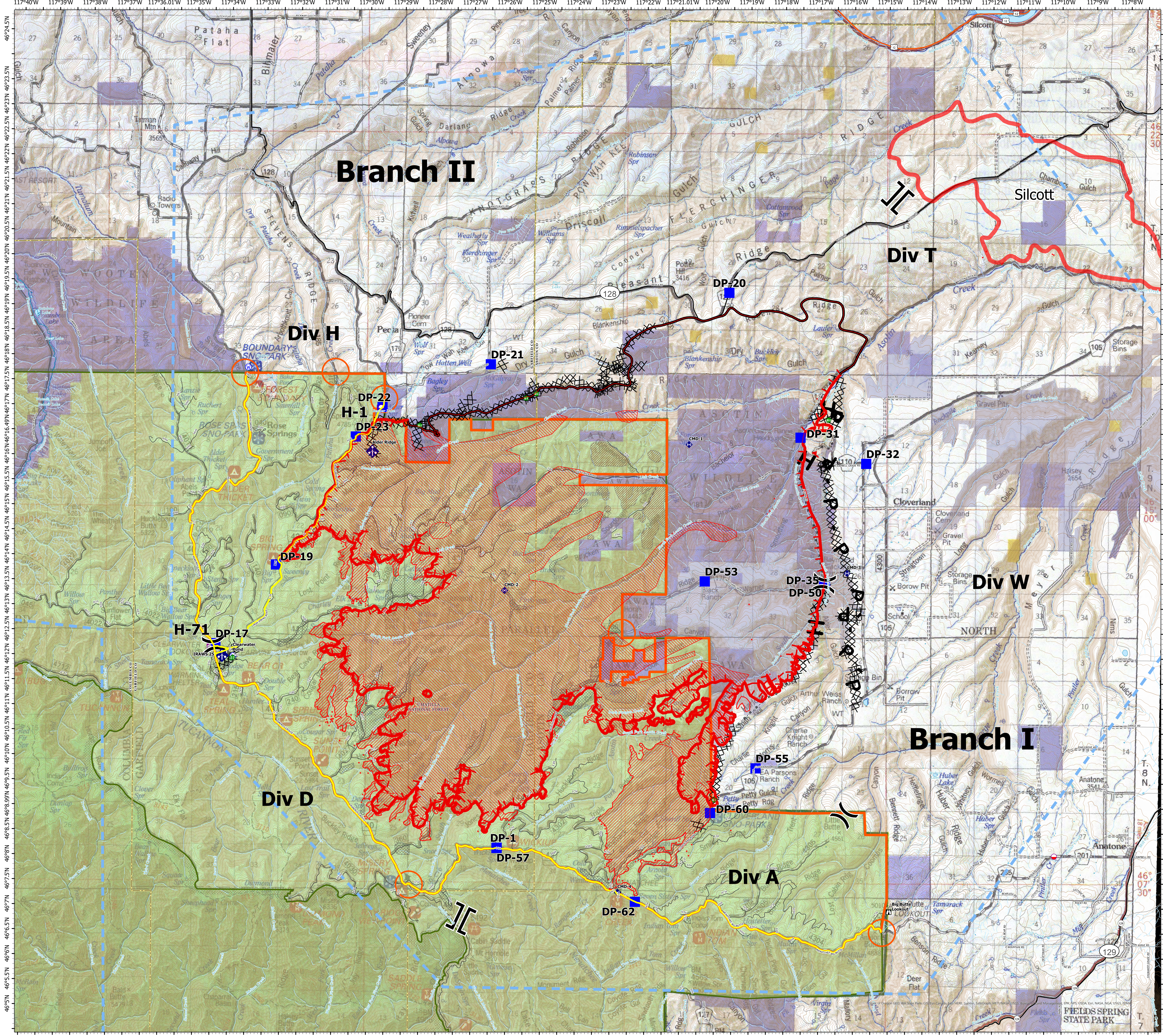


- Air Operations
 - Top Site
 - Public Release Base
 - Assignment Breaks
 - Break Break
 - Branch Break
 - Operations
 - Lookout
 - Other
 - Repair
 - Stream Crossing
 - Person - Call Damage
 - Communications
 - Public Weather Unit
 - Weather
 - Water Source
 - Cops Completed
 - Completed Road Line
 - Completed Road Control Line
 - Completed Road Line
- R - Contained Road as Line
- Ops Planned
- Planned Road as Line
- Reference
 - Other
 - Air Cops
 - Temporary Flight Restriction
 - Fire Perimeter
 - Fire Edge
 - Contained Line
 - Internal Heat
 - Subsided Heat
 - USFS Road Closures
 - Roads
 - U.S. Forest Service
 - Bureau of Land Management
 - State Land
 - Other Land, Including Private
 - Other Fire Avoidance
 - USFS Fire Closure Area
 - USFS Road Source
 - USFS Road
 - USFS Road



Maple Creek
7/14/2021 01:05
Aerial View IR Map Data
North American 1983 Datum
Lacking Data

NAD83 UTM Zone 11



FIELDSPRING STATE PARK