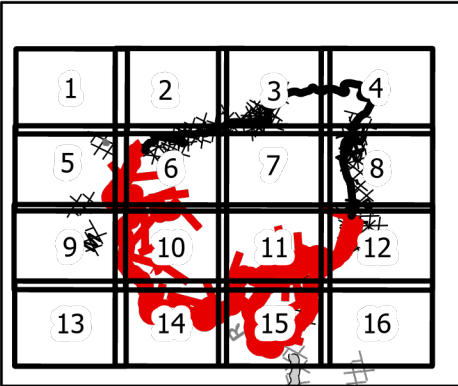
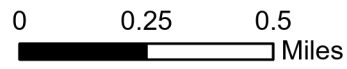


# IAP Map Book

Lick Creek  
OR-UMF-0006581  
07/15/2021 Day

63,533 acres at 07/15/2021



Page 1 of 16

## Water

Water Source

## Air Ops

Temporary Flight Restriction

USFS Road Closures

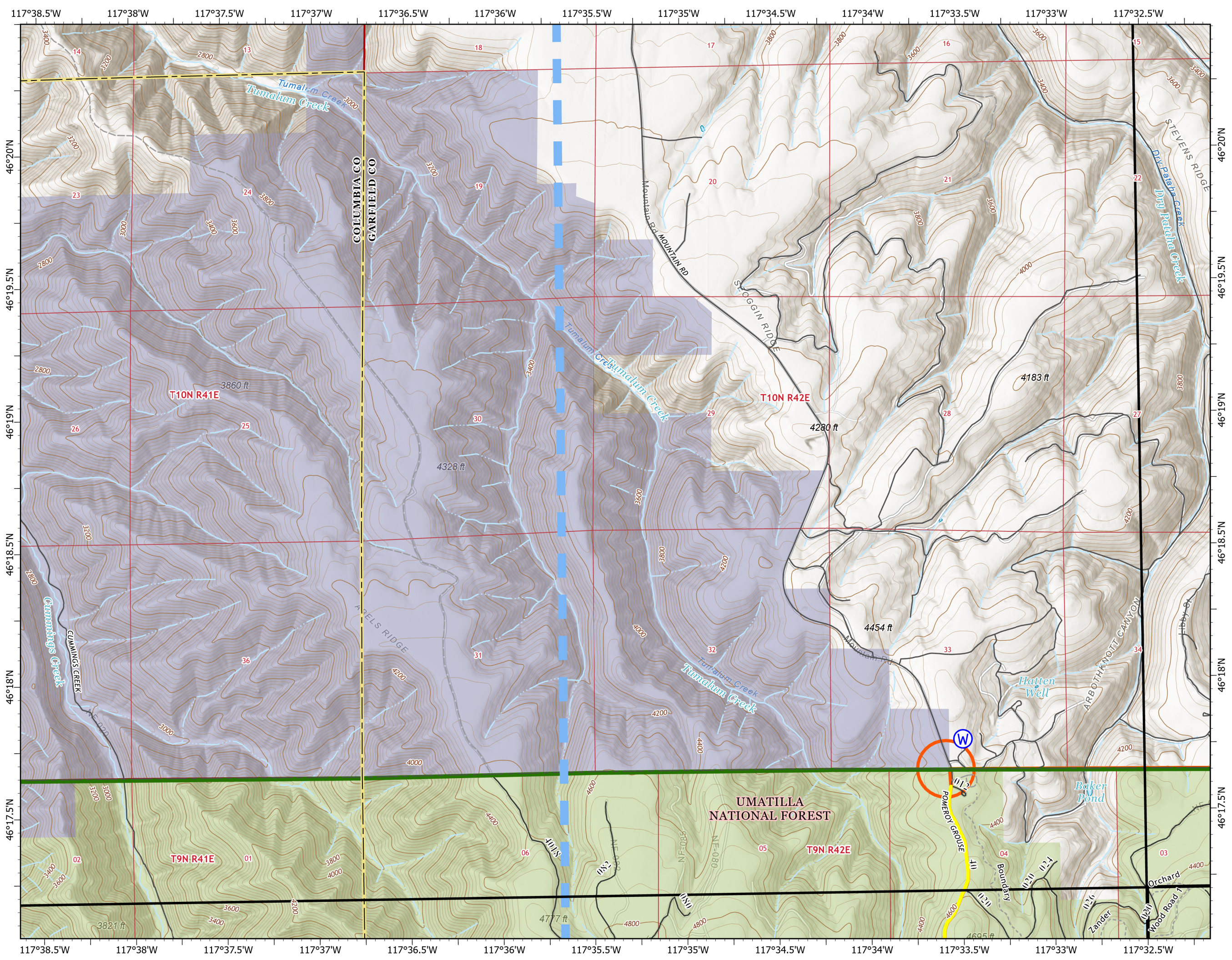
Roads

USFS Road Closures

USFS Fire Closure Area



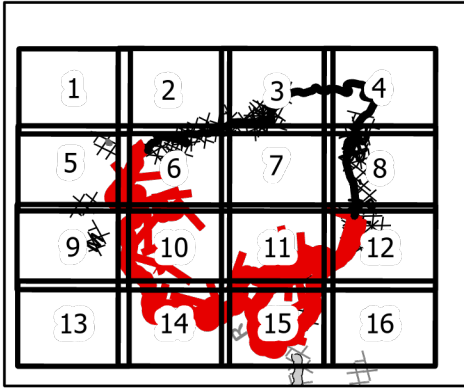
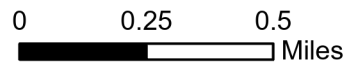
7/15/2021 0122  
Acres from IR and GPS  
North American 1983 Datum,  
LatLong Grid



# IAP Map Book

Lick Creek  
OR-UMF-0006581  
07/15/2021 Day

63,533 acres at 07/15/2021



Page 2 of 16

## Air Operations

Dip Site

## Assignment Breaks

Branch Break

## Logistics

Drop Point

## Ops Completed

Completed Dozer Line

## Fire Perimeter

Contained Line

USFS Road Closures

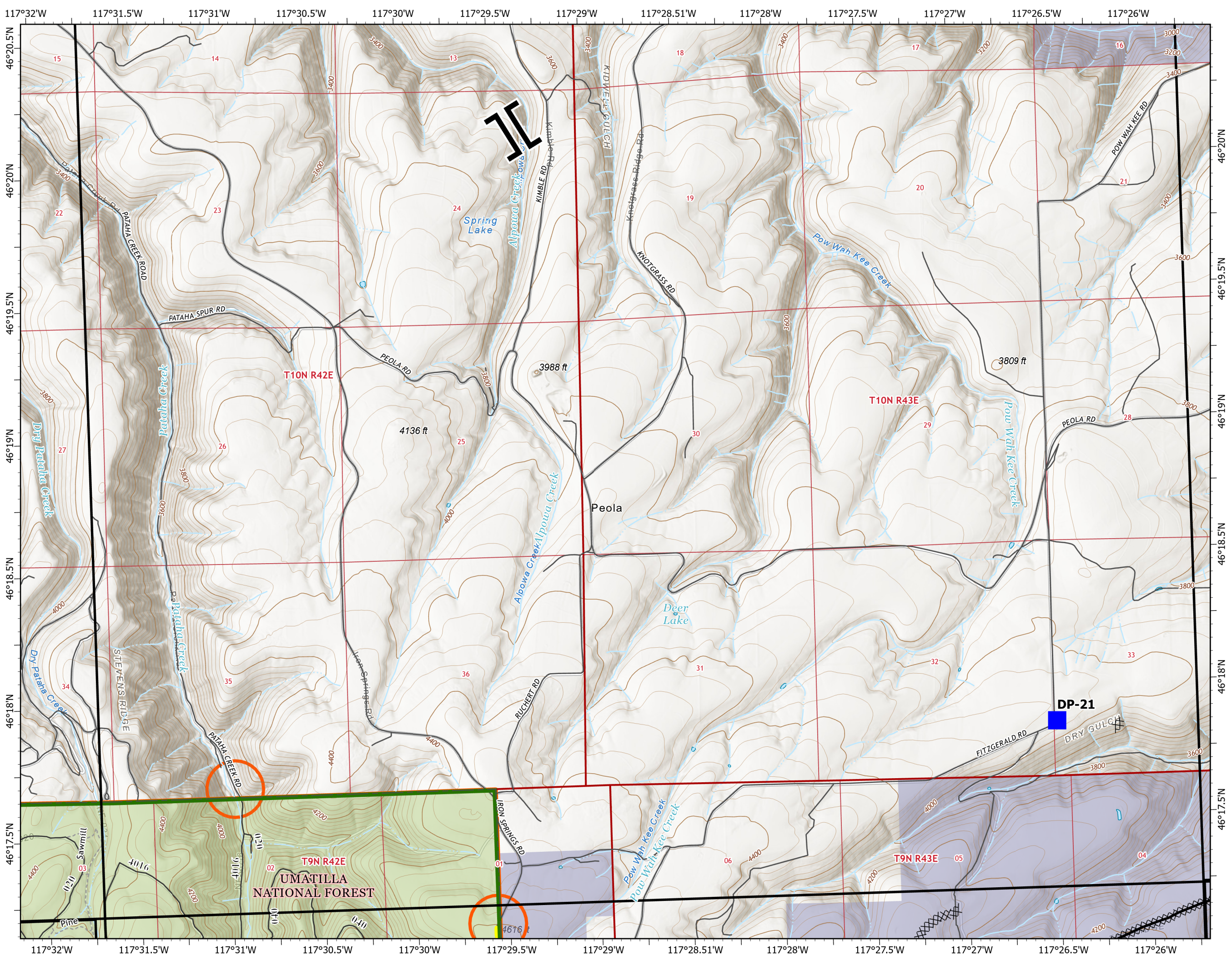
Roads

USFS Road Closures

USFS Fire Closure Area



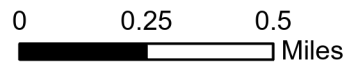
7/15/2021 0122  
Acres from IR and GPS  
North American 1983 Datum,  
Lat/Long Grid



# IAP Map Book

Lick Creek  
OR-UMF-0006581  
07/15/2021 Day

63,533 acres at 07/15/2021



1	2	3	4
5	6	7	8
9	10	11	12
13	14	15	16

Page 3 of 16

## Logistics

■ Drop Point

## Repair

🏠 Fence - Cut/Damaged

## Ops Completed

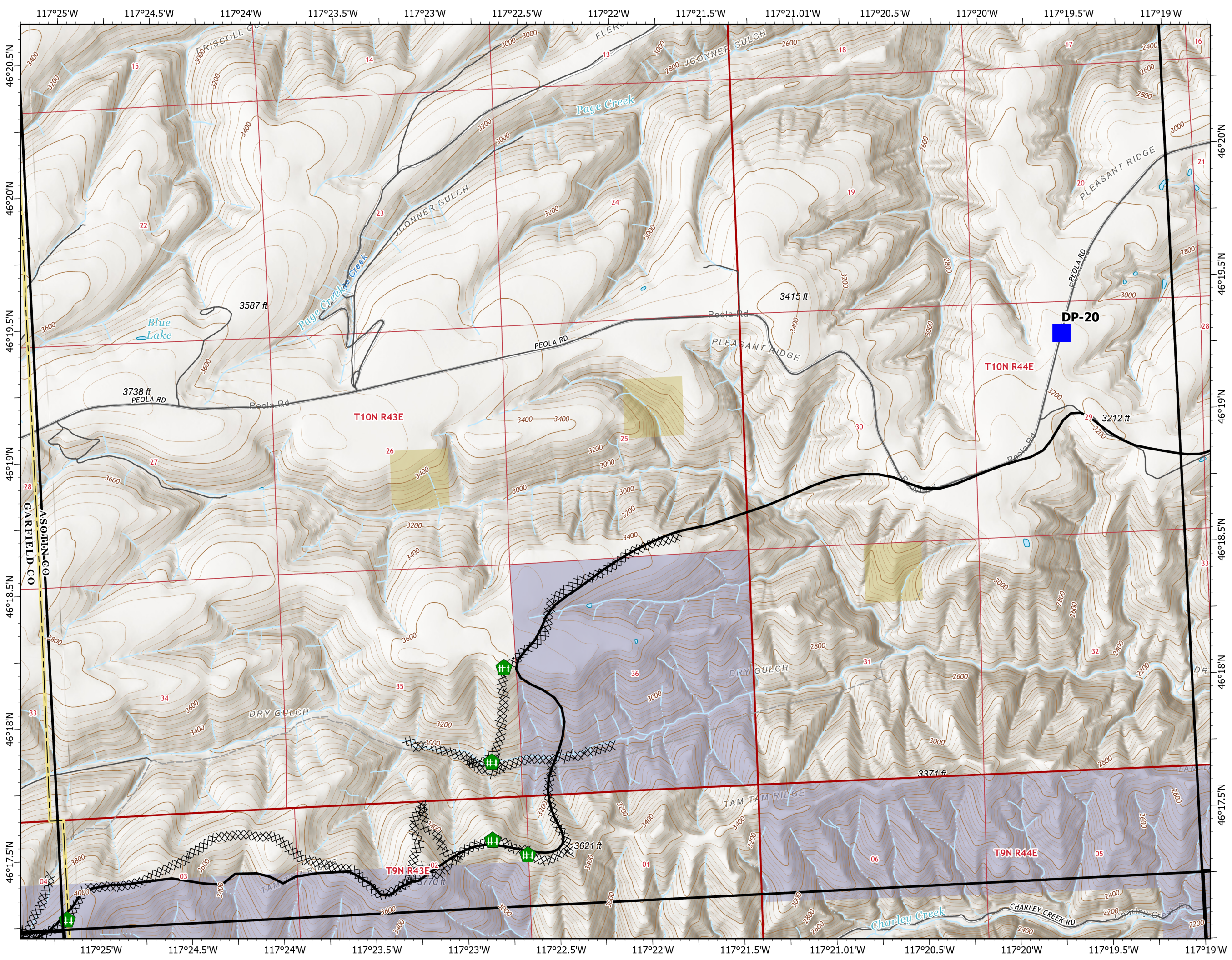
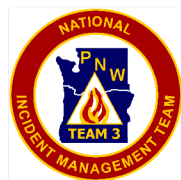
⊗ Completed Dozer Line

## Fire Perimeter

— Contained Line



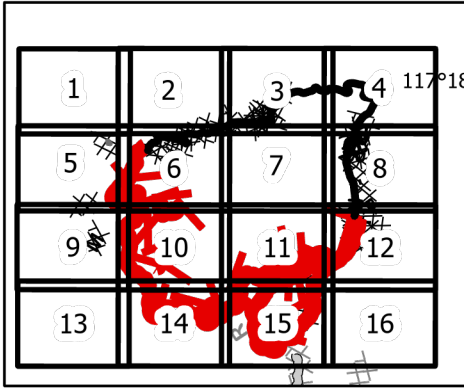
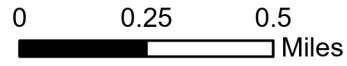
7/15/2021 0122  
Acres from IR and GPS  
North American 1983 Datum.  
Lat/Long Grid



# IAP Map Book

Lick Creek  
OR-UMF-0006581  
07/15/2021 Day

63,533 acres at 07/15/2021



Page 4 of 16

## Assignment Breaks

) ( Division Break

## Ops Completed

⊗ Completed Dozer Line

R Completed Road as Line

## Air Ops

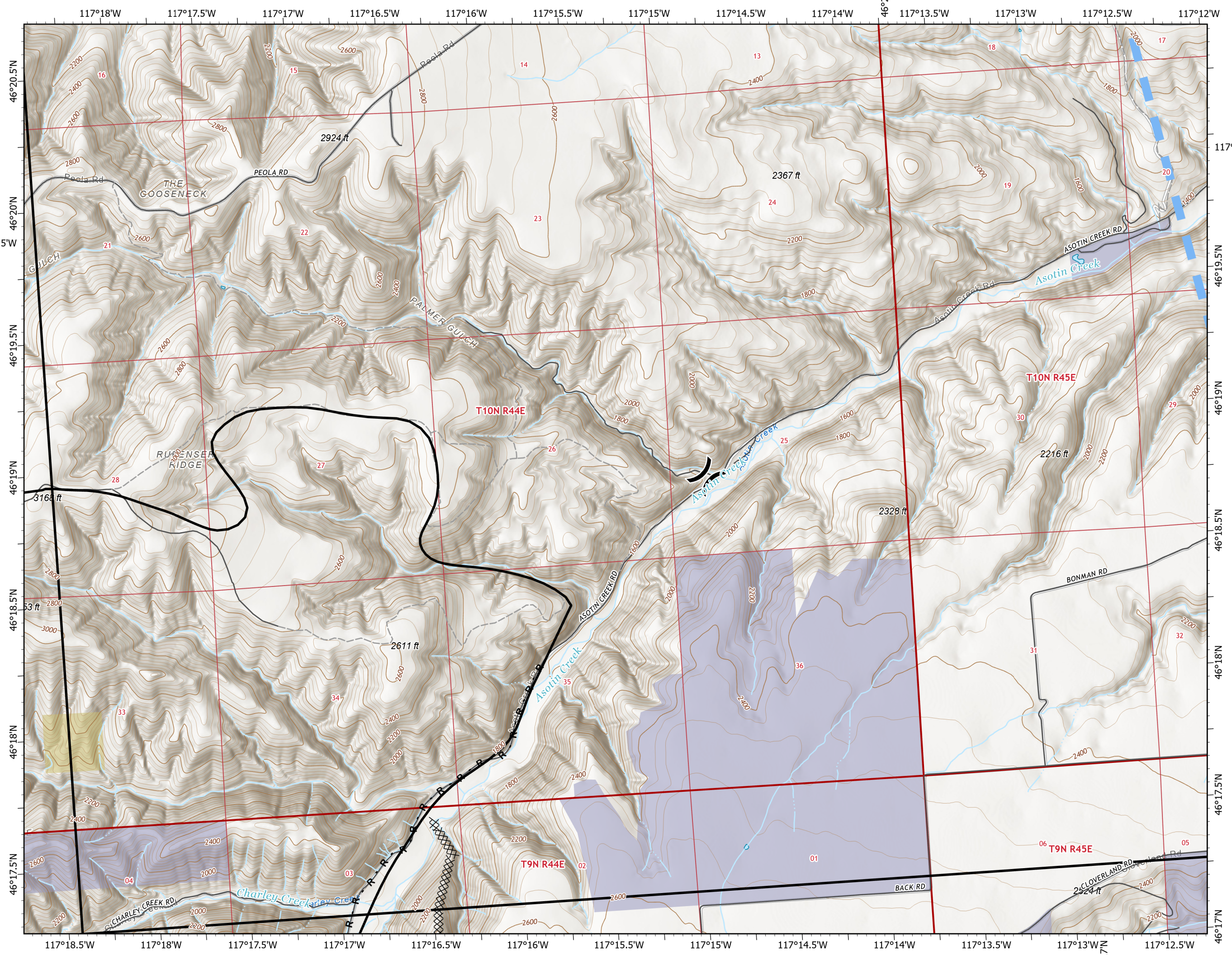
■ Temporary Flight Restriction

## Fire Perimeter

— Contained Line



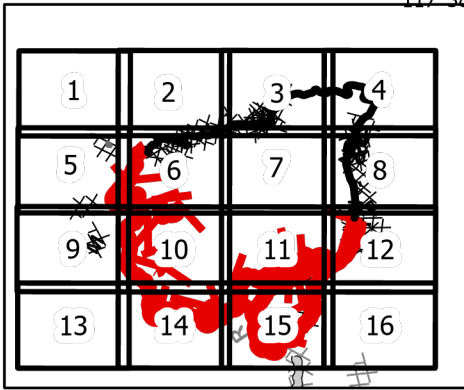
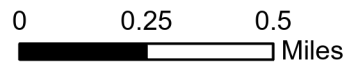
7/15/2021 0122  
Acres from IR and GPS  
North American 1983 Datum.  
Lat/Long Grid



# IAP Map Book

Lick Creek  
OR-UMF-0006581  
07/15/2021 Day

63,533 acres at 07/15/2021



Page 5 of 16

## Logistics

Drop Point

## Reference

Other

## Ops Completed

Completed Dozer Line

## Reference

Other

## Air Ops

Temporary Flight Restriction

## Fire Perimeter

Fire Edge

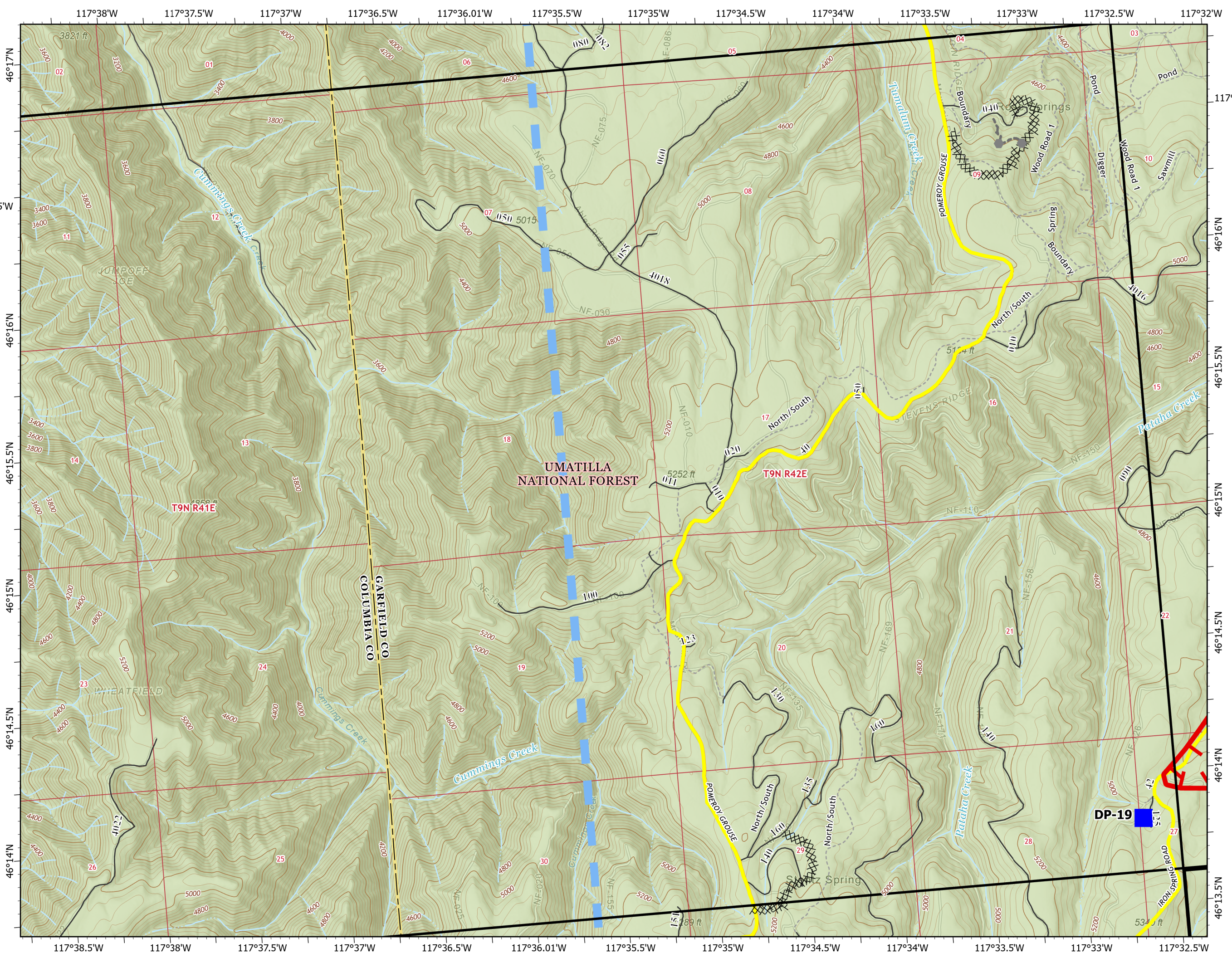
USFS Road Closures

Roads

USFS Fire Closure Area



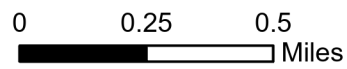
7/15/2021 0122  
Acres from IR and GPS  
North American 1983 Datum.  
Lat/Long Grid



# IAP Map Book

Lick Creek  
OR-UMF-0006581  
07/15/2021 Day

63,533 acres at 07/15/2021



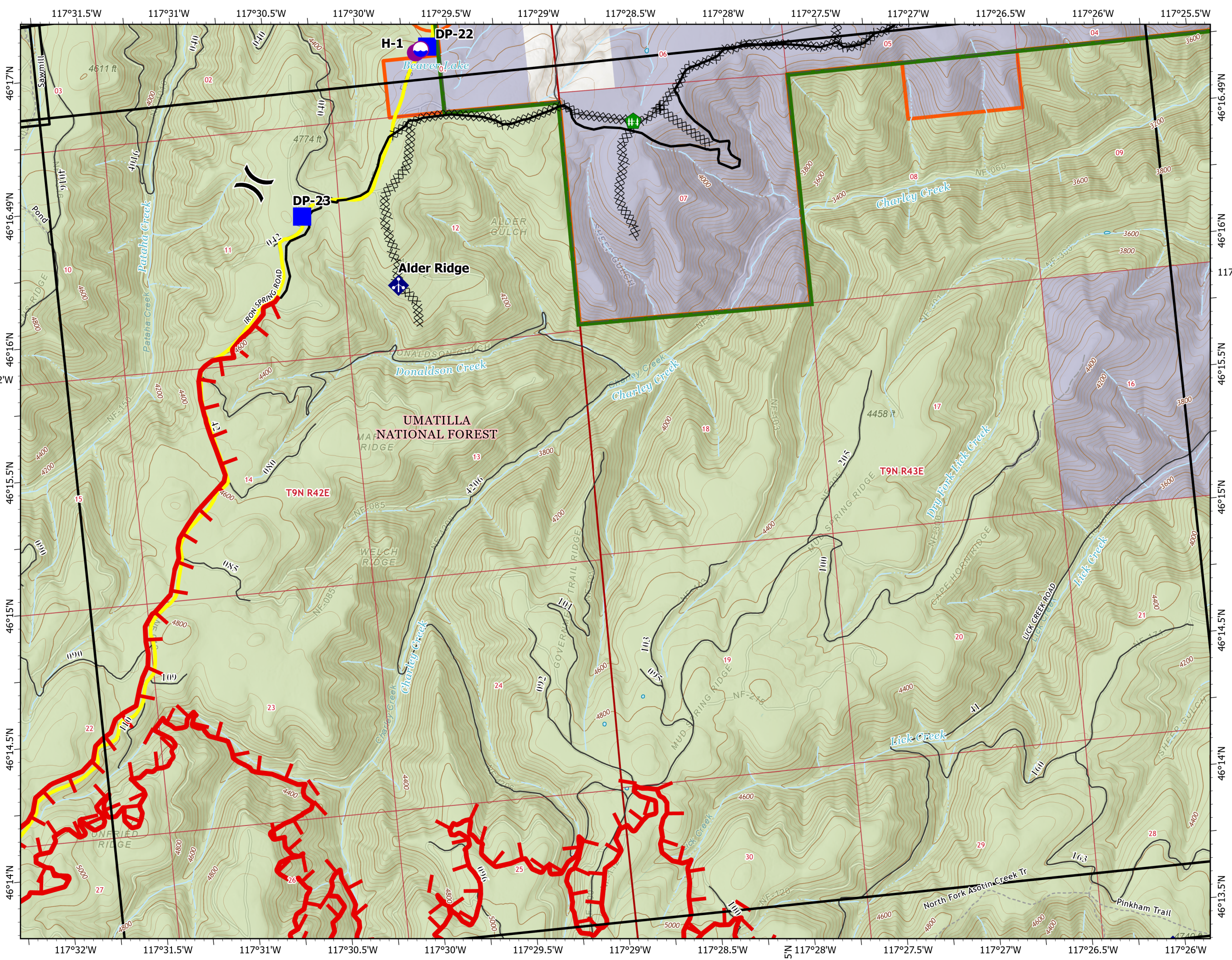
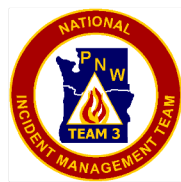
1	2	3	4
5	6	7	8
9	10	11	12
13	14	15	16

Page 6 of 16

- Air Operations**
  - Dip Site
  - Helispot
- Assignment Breaks**
  - Division Break
- Logistics**
  - Drop Point
- Repair**
  - Fence - Cut/Damaged
- Communications**
  - Mobile Weather Unit
  - Repeater
- Ops Completed**
  - Completed Dozer Line
- Fire Perimeter**
  - Fire Edge
  - Contained Line
  - USFS Road Closures
  - Roads
  - USFS Road Closures
  - USFS Fire Closure Area



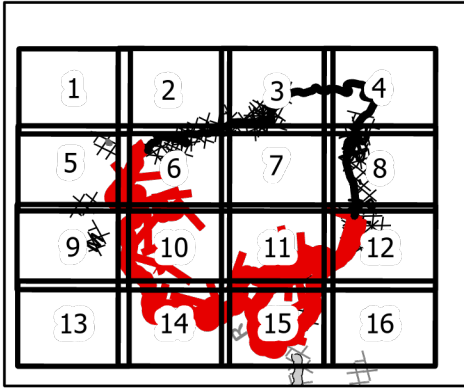
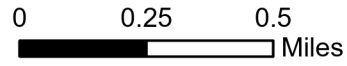
7/15/2021 0123  
Acres from IR and GPS  
North American 1983 Datum.  
Lat/Long Grid



# IAP Map Book

Lick Creek  
OR-UMF-0006581  
07/15/2021 Day

63,533 acres at 07/15/2021



Page 7 of 16

## Logistics

Drop Point

## Communications

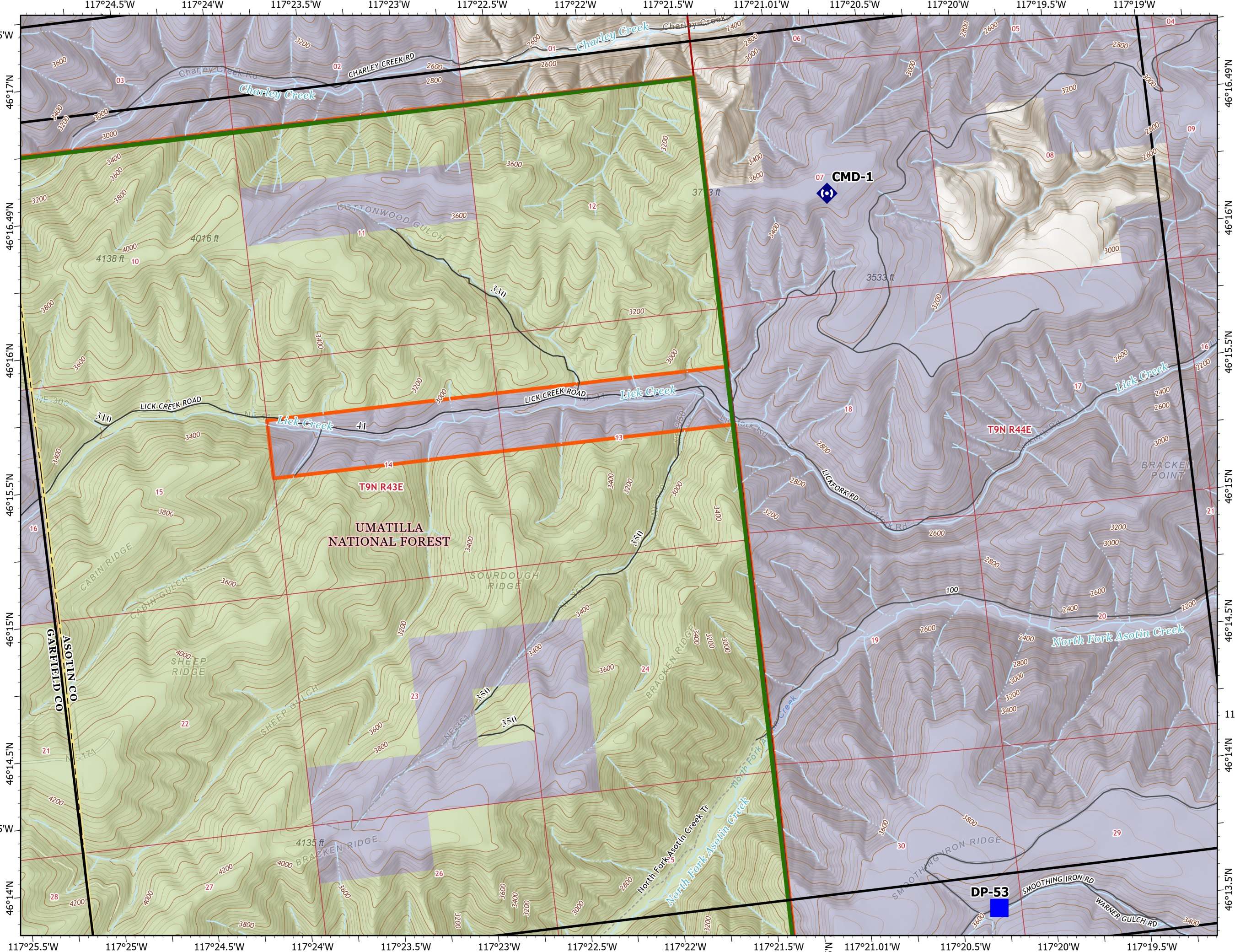
Repeater

Roads

USFS Fire Closure Area



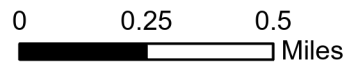
7/15/2021 0123  
Acres from IR and GPS  
North American 1983 Datum.  
Lat/Long Grid



# IAP Map Book

Lick Creek  
OR-UMF-0006581  
07/15/2021 Day

63,533 acres at 07/15/2021



1	2	3	4
5	6	7	8
9	10	11	12
13	14	15	16

Page 8 of 16

## Logistics

■ Drop Point

## Repair

🏠 Fence - Cut/Damaged

## Ops Completed

⊗ Completed Dozer Line

H Completed Hand Line

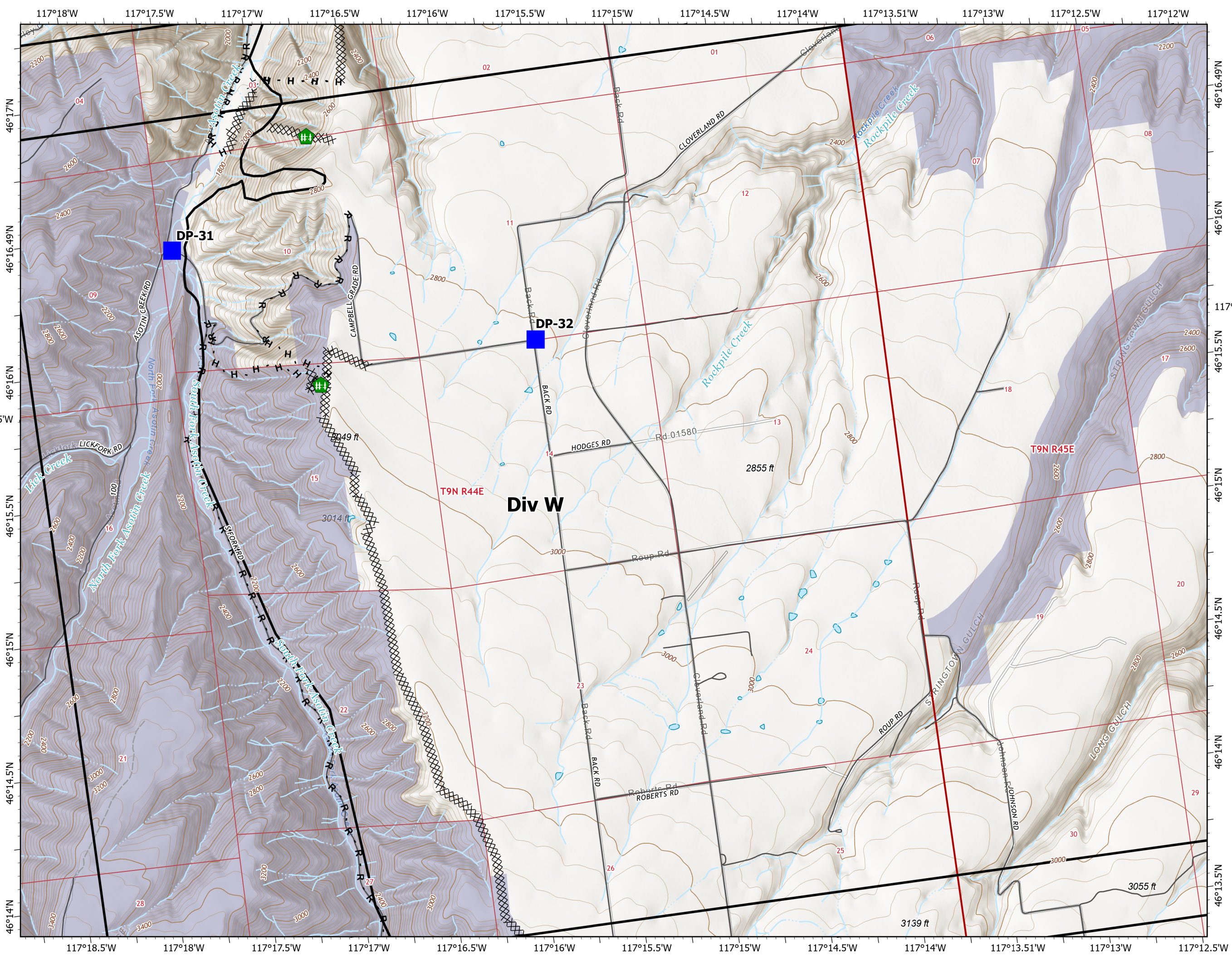
R Completed Road as Line

## Fire Perimeter

— Contained Line



7/15/2021 0123  
Acres from IR and GPS  
North American 1983 Datum.  
Lat/Long Grid

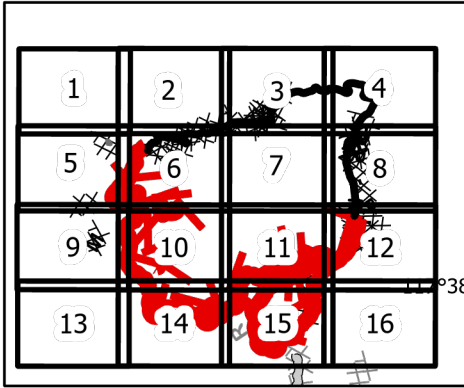
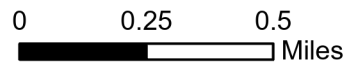




# IAP Map Book

Lick Creek  
OR-UMF-0006581  
07/15/2021 Day

63,533 acres at 07/15/2021

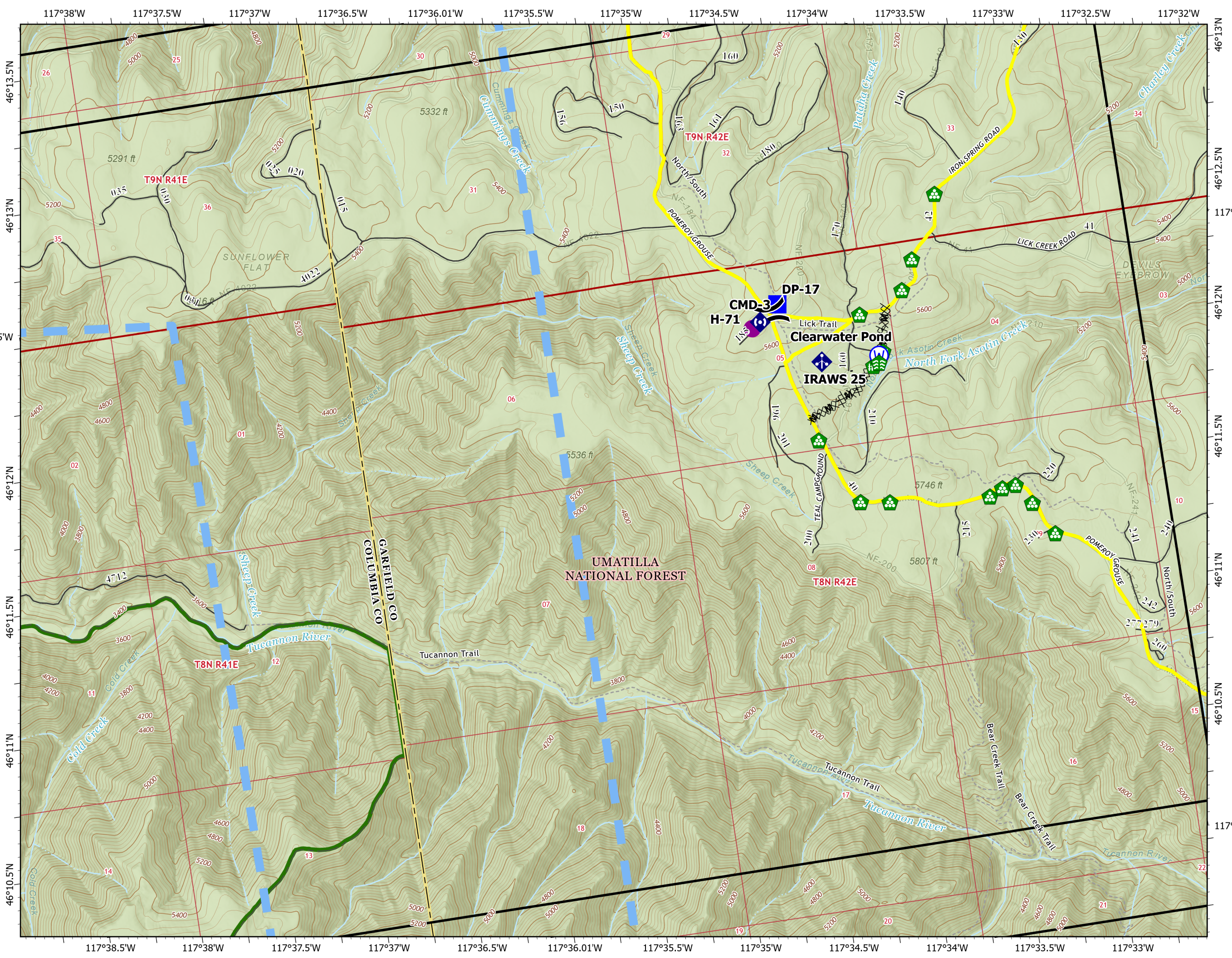


Page 9 of 16

- Air Operations**
  - Helispot
- Assignment Breaks**
  - ) ( Division Break
- Logistics**
  - Drop Point
- Repair**
  - 🌿 Stream Crossing
  - 🏠 Landing or Log Deck
  - 🚧 Fence - Cut/Damaged
- Communications**
  - 📶 Mobile Weather Unit
  - 📡 Repeater
- Water**
  - 💧 Water Source
- Ops Completed**
  - ⌘ Completed Dozer Line
  - ▬ Completed Mixed Construction Line
- Air Ops**
  - ▬ Temporary Flight Restriction
  - ▬ USFS Road Closures



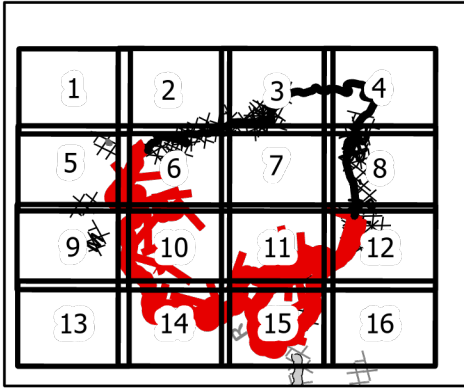
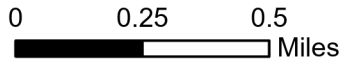
7/15/2021 0123  
Acres from IR and GPS  
North American 1983 Datum.  
Lat/Long Grid



# IAP Map Book

Lick Creek  
OR-UMF-0006581  
07/15/2021 Day

63,533 acres at 07/15/2021



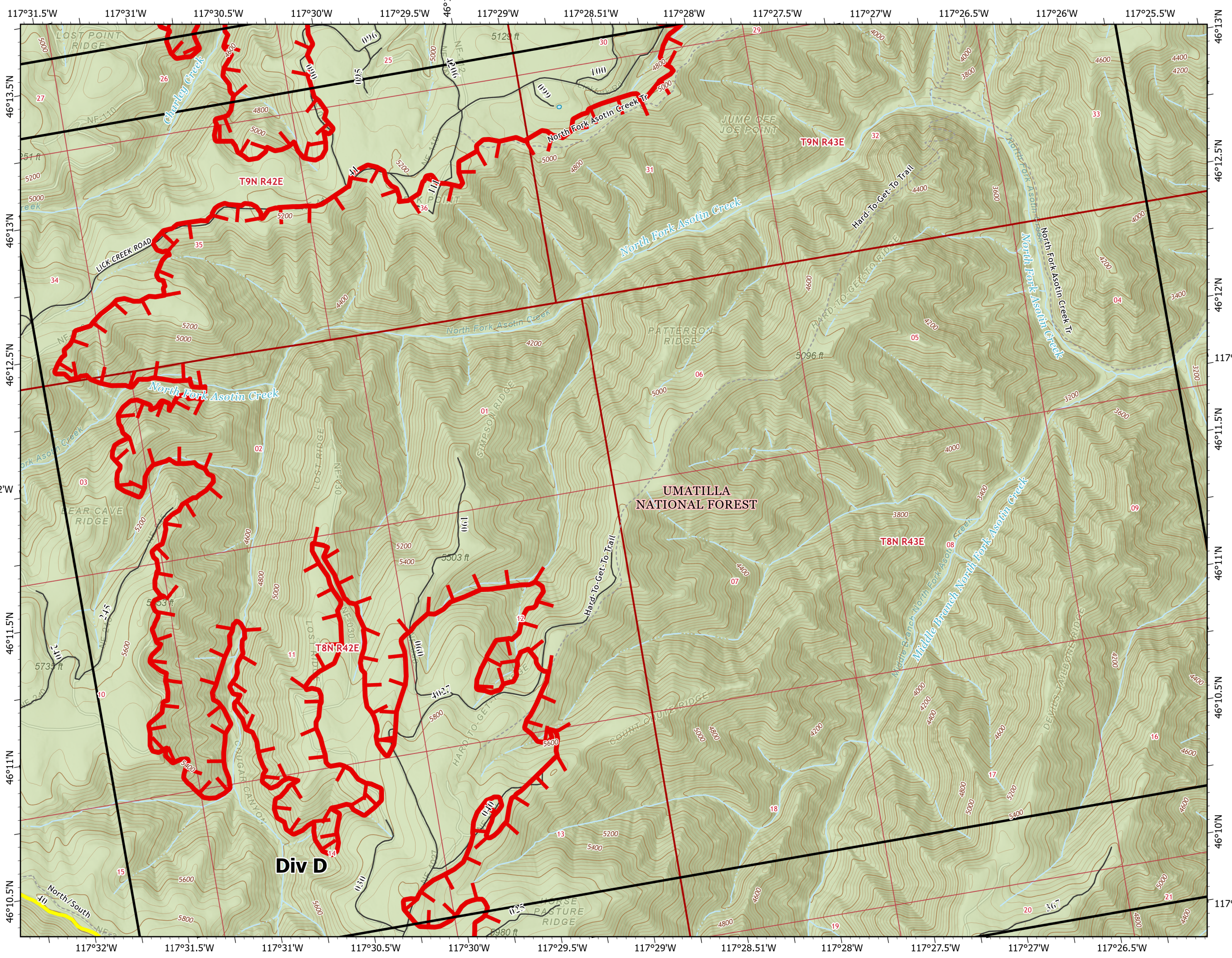
Page 10 of 16

## Fire Perimeter

- Fire Edge
- USFS Road Closures
- Roads
- USFS Fire Closure Area



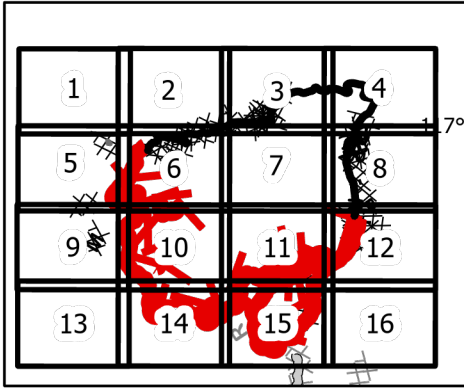
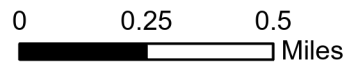
7/15/2021 0123  
Acres from IR and GPS  
North American 1983 Datum.  
Lat/Long Grid



# IAP Map Book

Lick Creek  
OR-UMF-0006581  
07/15/2021 Day

63,533 acres at 07/15/2021



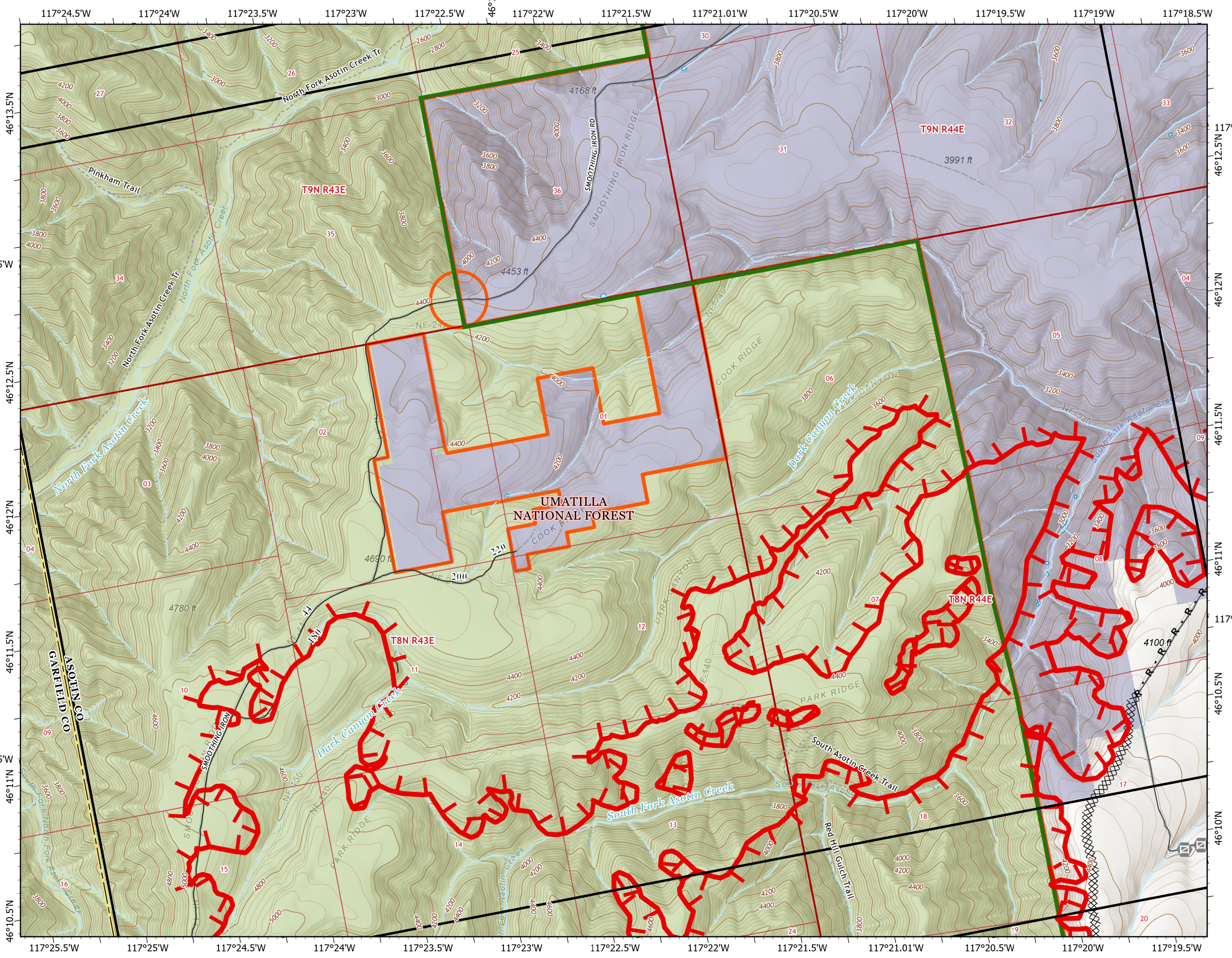
Page 11 of 16

## Reference

- Gate
- Ops Completed
  - Completed Dozer Line
  - Completed Road as Line
- Fire Perimeter
  - Fire Edge
  - Roads
  - USFS Road Closures
  - USFS Fire Closure Area



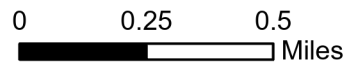
7/15/2021 0124  
Acres from IR and GPS  
North American 1983 Datum,  
Lat/Long Grid



# IAP Map Book

Lick Creek  
OR-UMF-0006581  
07/15/2021 Day

63,533 acres at 07/15/2021



1	2	3	4
5	6	7	8
9	10	11	12
13	14	15	16

Page 12 of 16

## Air Operations

Dip Site

## Assignment Breaks

Division Break

## Logistics

Drop Point

## Ops Completed

Completed Dozer Line

Completed Hand Line

Completed Road as Line

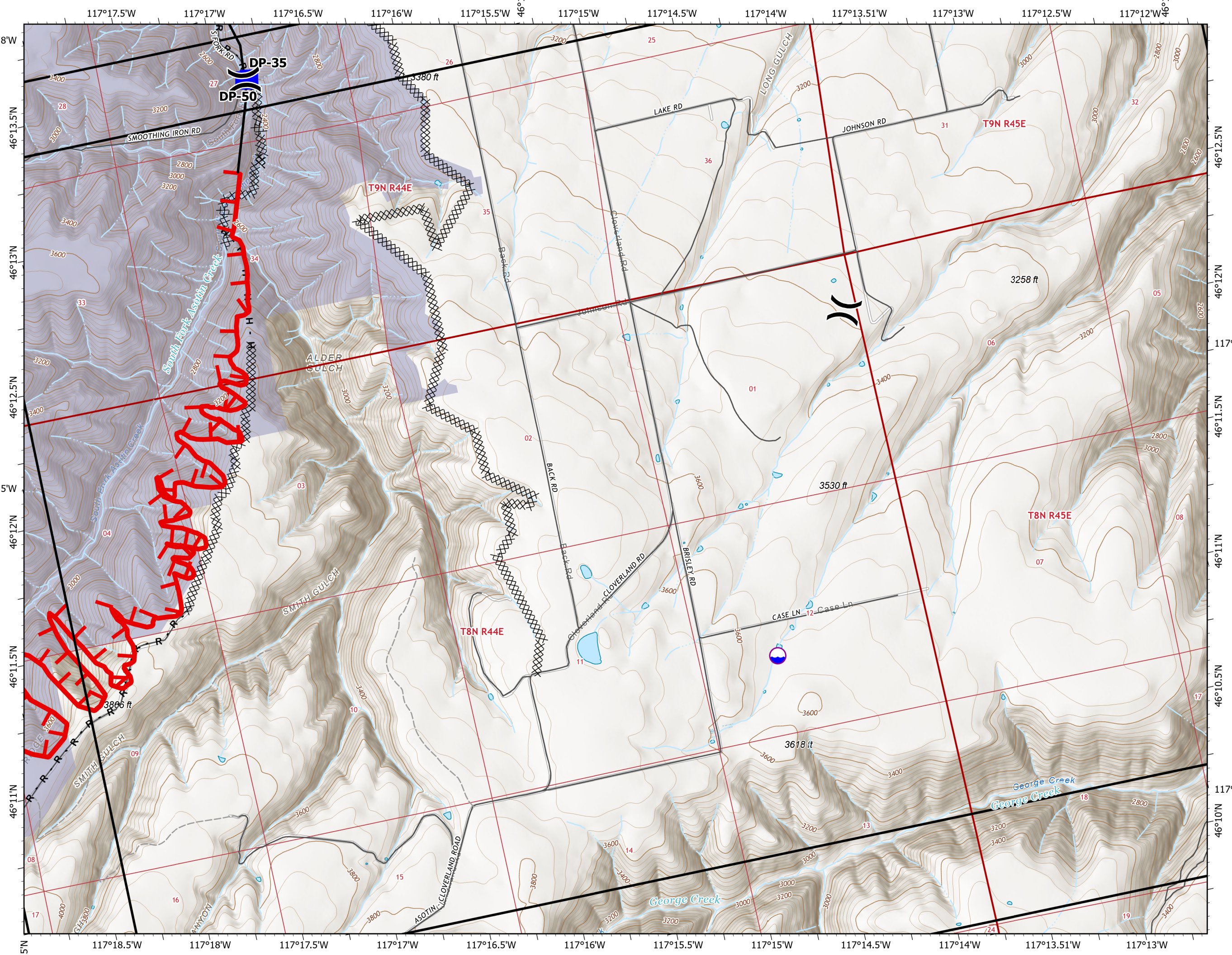
## Fire Perimeter

Fire Edge

Contained Line



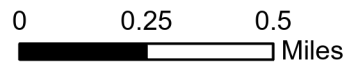
7/15/2021 0124  
Acres from IR and GPS  
North American 1983 Datum,  
LatLong Grid



# IAP Map Book

Lick Creek  
OR-UMF-0006581  
07/15/2021 Day

63,533 acres at 07/15/2021

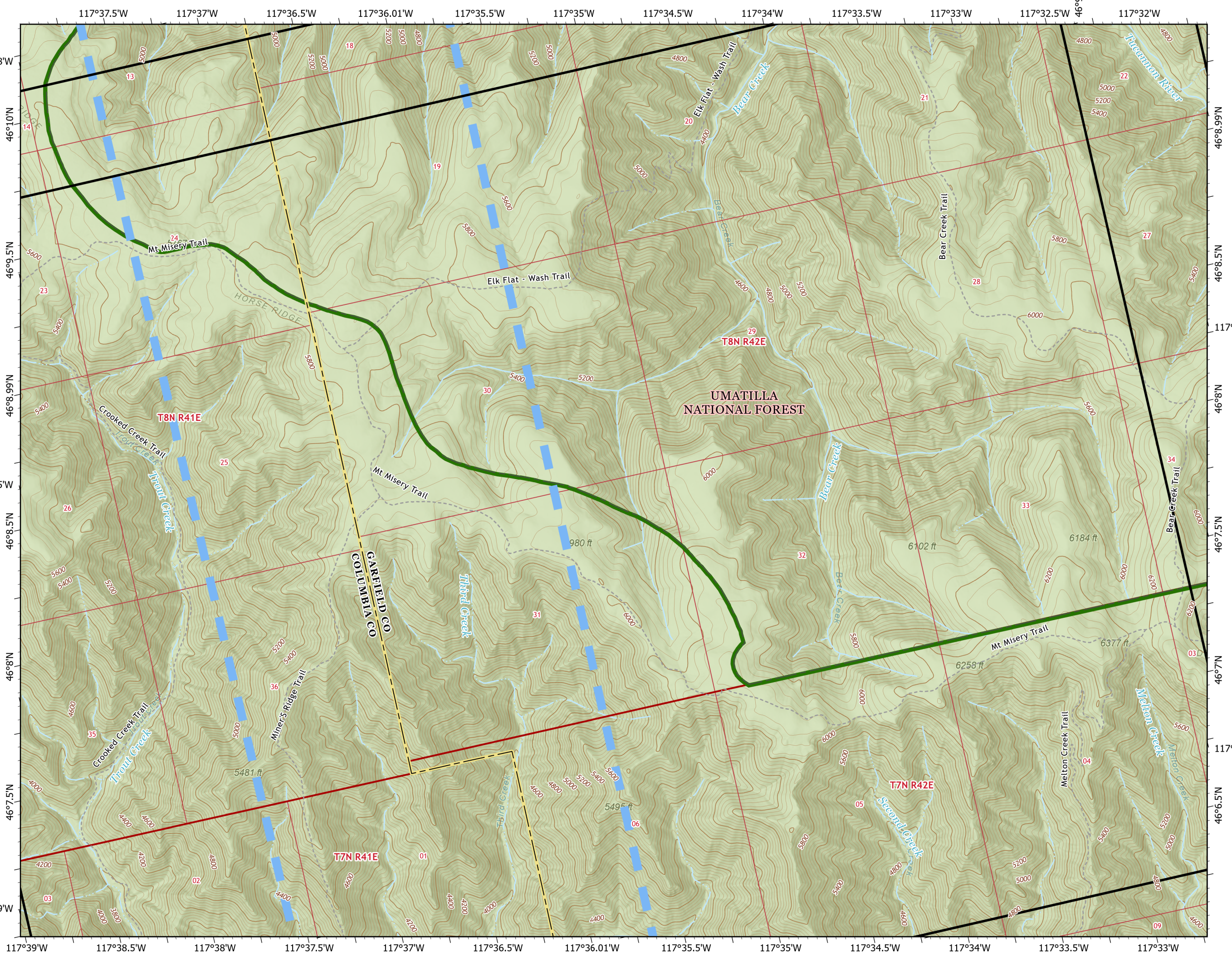


1	2	3	4
5	6	7	8
9	10	11	12
13	14	15	16

Page 13 of 16

## Air Ops

■ Temporary Flight Restriction



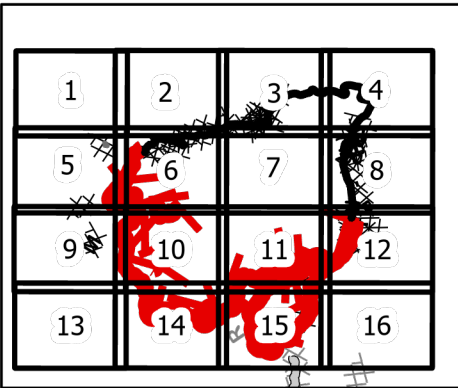
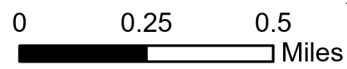
7/15/2021 0124  
Acres from IR and GPS  
North American 1983 Datum.  
Lat/Long Grid



# IAP Map Book

Lick Creek  
OR-UMF-0006581  
07/15/2021 Day

63,533 acres at 07/15/2021



Page 14 of 16

## Air Operations

● Helispot

## Assignment Breaks

⌋ Branch Break

## Logistics

■ Drop Point

## Ops Planned

R Planned Road as Line

## Fire Perimeter

└ Fire Edge

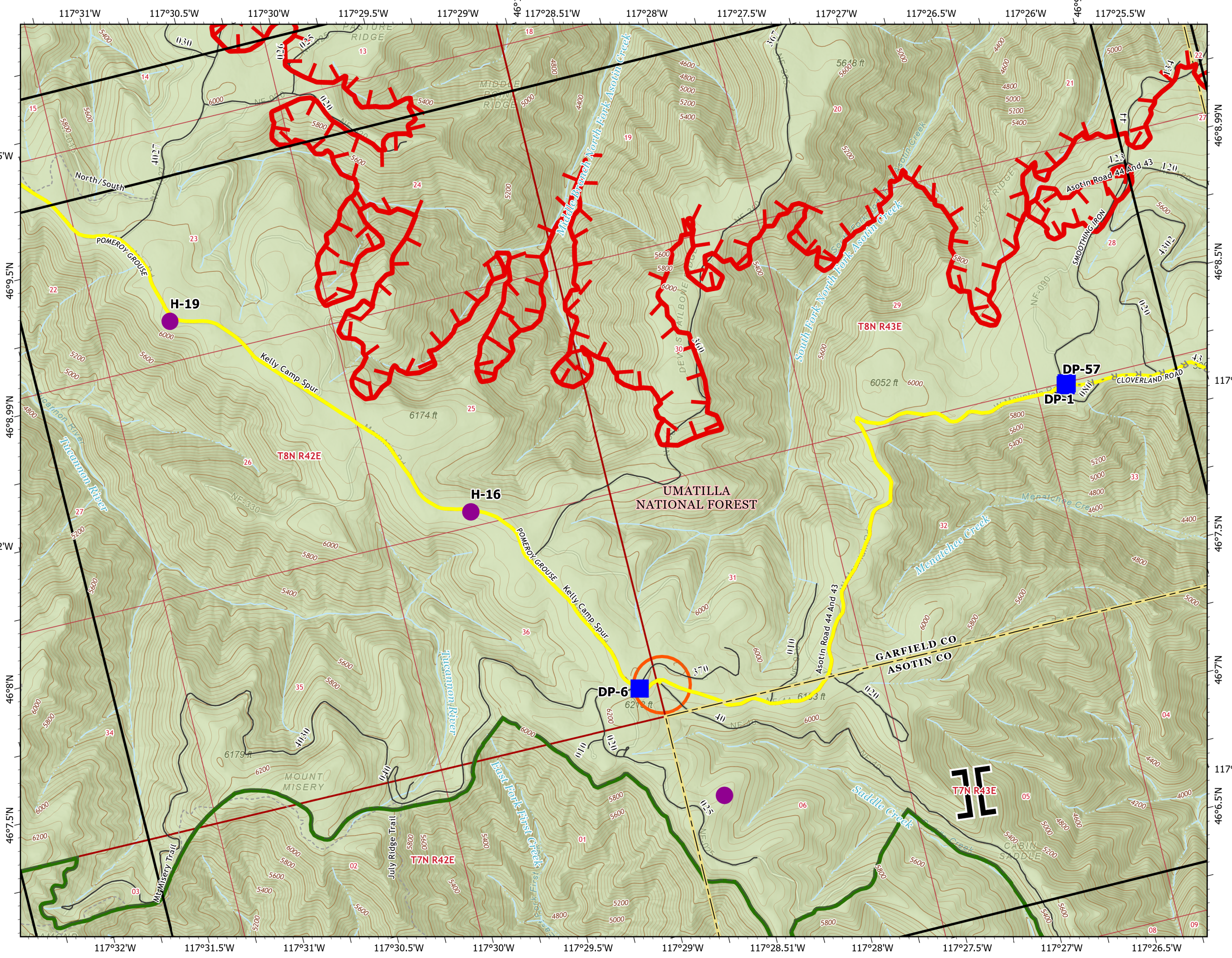
— USFS Road Closures

— Roads

○ USFS Road Closures

▭ USFS Fire Closure Area

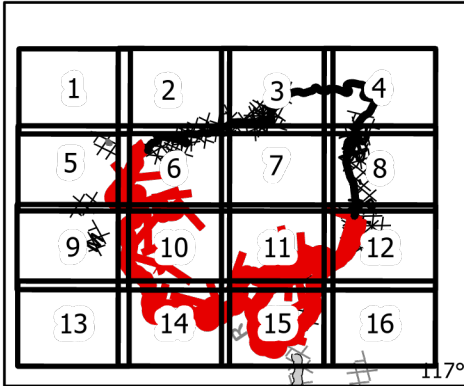
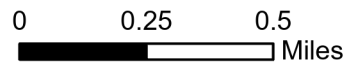
7/15/2021 0124  
Acres from IR and GPS  
North American 1983 Datum,  
Lat/Long Grid



# IAP Map Book

Lick Creek  
OR-UMF-0006581  
07/15/2021 Day

63,533 acres at 07/15/2021

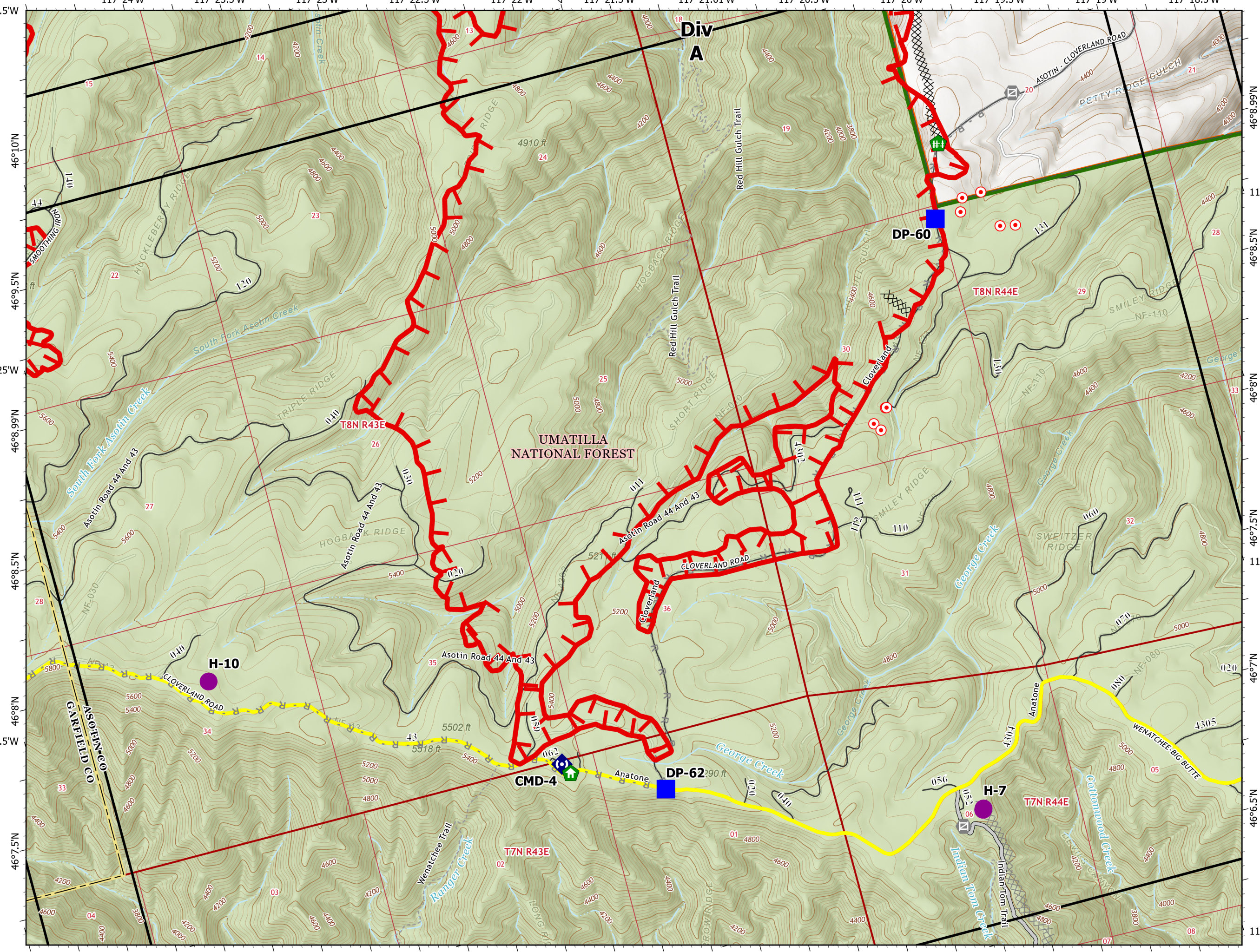


Page 15 of 16

- Air Operations**
  - Helispot
- Logistics**
  - Drop Point
- Fire**
  - Hot Spot - Spot Fire
- Reference**
  - ⊗ Gate
- Repair**
  - ⚡ Structure Wrap
  - ⚡ Fence - Cut/Damaged
- Communications**
  - ⬢ Repeater



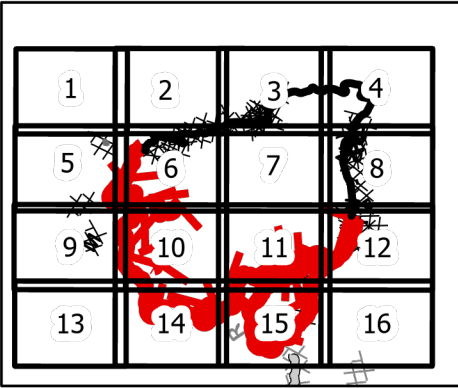
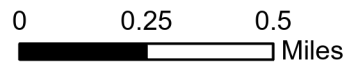
7/15/2021 0125  
Acres from IR and GPS  
North American 1983 Datum.  
Lat/Long Grid



# IAP Map Book

Lick Creek  
OR-UMF-0006581  
07/15/2021 Day

63,533 acres at 07/15/2021



Page 16 of 16

## Operations

Lookout

## Reference

Gate

USFS Road Closures

Roads

USFS Road Closures

USFS Fire Closure Area



7/15/2021 0125  
Acres from IR and GPS  
North American 1983 Datum,  
Lat/Long Grid

