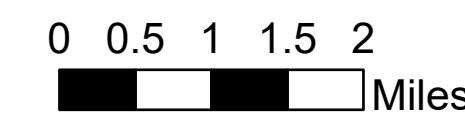


Air Ops Map

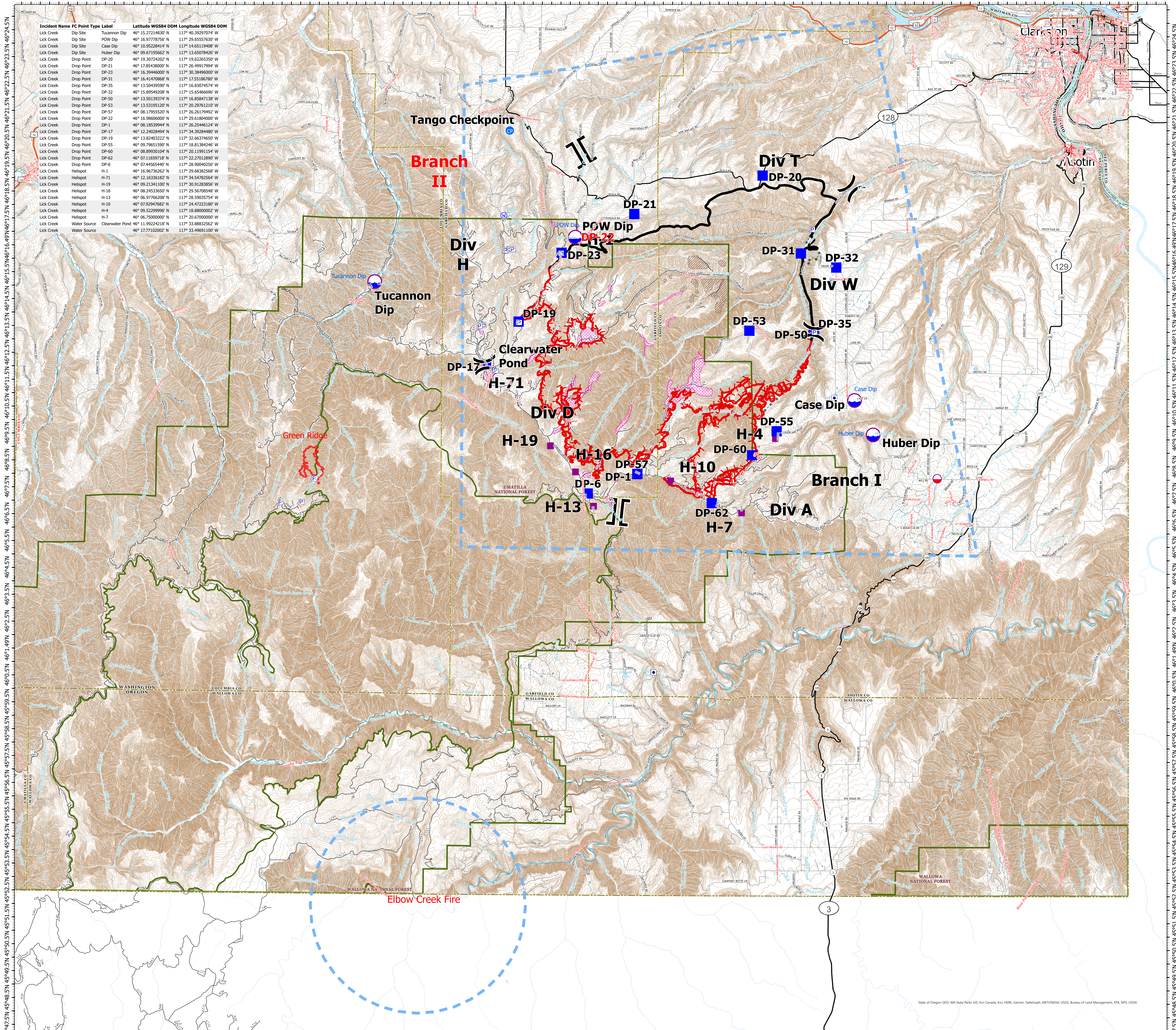
Lick Creek Fire
 OR-UMF-0006581
 July 16 2021 day @ 0330

64,792 acres



- Air Operations**
 - Dip Site
 - Mobile Retardant Base
 - Helispot
- Assignment Breaks**
 - Division Break
 - Branch Break
- Logistics**
 - Drop Point
- Fire**
 - Hot Spot - Spot Fire
- Water**
 - Water Source
- Ops Completed**
 - Completed Road as Line
 - Planned Road as Line
- Air Ops**
 - Temporary Flight Restriction
- Fire Perimeter**
 - Fire Edge
 - Contained Line
- Polygon Type**
 - Wildfire Daily Fire Perimeter
 - Roads
 - Aerial Fire Avoidance
 - Dry Gulch READ Sensitive Areas
- Tango Checkpoint Even Point**
 - Tango Checkpoint Even Point
 - Tango Checkpoint Even Point
- Event Point Table Insert**
 - Event Point Table Insert

Incident Name	FC Point Type	Label	Latitude WGS84 DDM	Longitude WGS84 DDM
Lick Creek	Dip Site	Tucannon Dip	46° 13.27214837' N	117° 48.39237914' W
Lick Creek	Dip Site	POW Dip	46° 16.37787856' N	117° 29.65527620' W
Lick Creek	Dip Site	Case Dip	46° 10.95284141' N	117° 14.65119408' W
Lick Creek	Dip Site	Huber Dip	46° 09.67195662' N	117° 13.65078426' W
Lick Creek	Drop Point	DP-20	46° 19.30724202' N	117° 19.62265350' W
Lick Creek	Drop Point	DP-21	46° 17.85438007' N	117° 26.49917994' W
Lick Creek	Drop Point	DP-22	46° 16.39446007' N	117° 26.39446007' W
Lick Creek	Drop Point	DP-31	46° 16.41470868' N	117° 17.55186780' W
Lick Creek	Drop Point	DP-35	46° 13.50439500' N	117° 16.83074574' W
Lick Creek	Drop Point	DP-32	46° 15.89549208' N	117° 15.65466696' W
Lick Creek	Drop Point	DP-50	46° 13.50139374' N	117° 16.85847138' W
Lick Creek	Drop Point	DP-53	46° 13.53195120' N	117° 20.29761210' W
Lick Creek	Drop Point	DP-57	46° 08.17985307' N	117° 26.36794922' W
Lick Creek	Drop Point	DP-22	46° 16.39600000' N	117° 29.61804000' W
Lick Creek	Drop Point	DP-1	46° 08.18539944' N	117° 26.25446124' W
Lick Creek	Drop Point	DP-17	46° 12.24028494' N	117° 34.39244800' W
Lick Creek	Drop Point	DP-19	46° 13.82403222' N	117° 32.66374650' W
Lick Creek	Drop Point	DP-55	46° 09.79651590' N	117° 18.81384246' W
Lick Creek	Drop Point	DP-60	46° 08.89920194' N	117° 20.11991154' W
Lick Creek	Drop Point	DP-62	46° 07.11659718' N	117° 22.27012890' W
Lick Creek	Drop Point	DP-6	46° 07.44564407' N	117° 28.90040256' W
Lick Creek	Helispot	H-1	46° 16.96732622' N	117° 29.6832568' W
Lick Creek	Helispot	H-71	46° 12.16336182' N	117° 34.54782564' W
Lick Creek	Helispot	H-19	46° 09.21341100' N	117° 30.91283856' W
Lick Creek	Helispot	H-16	46° 08.24533054' N	117° 29.56708548' W
Lick Creek	Helispot	H-13	46° 06.97746208' N	117° 28.59035754' W
Lick Creek	Helispot	H-10	46° 07.92947682' N	117° 24.47223180' W
Lick Creek	Helispot	H-4	46° 09.52299996' N	117° 18.88000002' W
Lick Creek	Helispot	H-7	46° 06.75000000' N	117° 20.67000000' W
Lick Creek	Water Source	Clearwater Pond	46° 11.99224218' N	117° 33.88832562' W
Lick Creek	Water Source		46° 17.77102002' N	117° 33.49691100' W



Map Data
 7/16/2021 03:30
 Aerial from Bing and GIS
 North American 1983 Datum
 Lambert Conformal

State of Oregon GEO, WA State Parks GIS, Eri Canada, Esri, HERE, Garmin, SafeGraph, METI/NASA, USGS, Bureau of Land Management, EPA, NPS, USDA