

INCIDENT ACTION PLAN

LYLE HILL FIRE

Wednesday, July 14, 2021

0600-1800 Operational Period

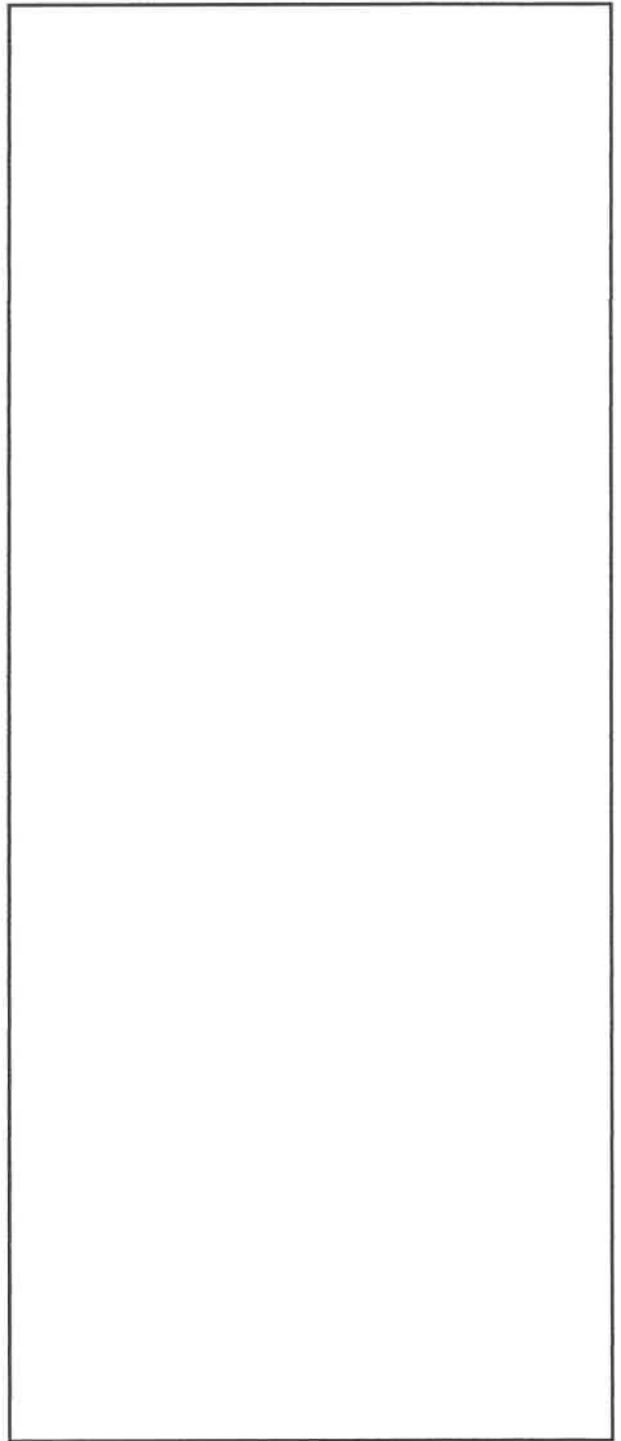
WA-SES-000354

WA-WFS-000205

221-LAK



% of Effort		
	Ground	Air
DIV A		
DIV M		
DIV		
DIV Z		



ORGANIZATION ASSIGNMENT LIST (ICS 203)

1. Incident Name: LYLE HILL		2. Operational Period: DAY SHIFT	
		Date/Time From: 07/14/2021 0600	Date/Time To: 07/14/2021 1800
		WED	
3. Incident Commander(s) and Command Staff:		DEPUTY OPS SECTION CHIEF	
IC/UC	LEONARD JOHNSON	STAGING AREA	
DEPUTY			
SAFETY OFFICER	DON FORTIER	DIVISION/GROUP	ALPHA
SAFETY OFFICER	MIKE HARRIS	DIVISION/GROUP	MIKE
INFORMATION OFFICER	SHEARER, BEN MASSEY, COLE (T)	DIVISION/GROUP	ZULU
		DIVISION/GROUP	STRUCTURE PROTECTION
4. Agency/Organization Representative(s):		7b. Air Operations Branch:	
Agency/Organization	Name	AIR OPS BRANCH DIRECTOR	
WADNR	SETH JONES WYATT LEIGHTON	AIR ATTACK SUPERVISOR	
5. Planning Section:		AIR SUPPORT SUPERVISOR	
CHIEF	RYAN SCHARNHORST	HELICOPTER COORDINATOR	
DEPUTY	BRIAN DODGE	AIR TANKER COORDINATOR	
RESOURCES UNIT		8. Finance/Administration Section:	
SITUATION UNIT		CHIEF	BOB THOMPSON
DOCUMENTATION UNIT		DEPUTY	LISA EGTVEDT
DEMOBILIZATION UNIT	JENNIFER NORTON (T)	TIME UNIT	
FIRE BEHAVIOR ANALYST		PROCUREMENT UNIT	
HUMAN RESOURCE SPECIALIST		COMPENSATION UNIT	
TRAINING SPECIALIST		COST UNIT	
GIS SPECIALIST			
TECHNOLOGY SUPPORT SPECIALIST			
INCIDENT METEOROLOGIST			
6. Logistics Section:			
CHIEF	JOSH AMBROSE		
DEPUTY			
SUPPLY UNIT			
RADO	PAUL CARLYLE (T)		
GROUND SUPPORT UNIT			
GROUND SUPPORT UNIT	ALANDRA SWORDS (T)		
RADO	ERIC SCHEARER (T)		
SECURITY UNIT			
FOOD UNIT			
7. Operations Section:			
OPS SECTION CHIEF	WESLEY LONG		
DAY OPS SECTION CHIEF			
NIGHT OPS SECTION CHIEF			
PLANNING OPS			
9. Prepared By:	Name: RYAN SCHARNHORST	Position/Title: PSC3	Signature:
ICS 203	IAP Page	Date/Time: 07/13/2021 1543	

WEATHER	1. Incident Name Lyle Hill	2. Date Prepared 7/13/2021	3. Time Prepared 2100
.WEDNESDAY...			
Sky/weather.....Sunny (0-5 percent). Haze and areas of smoke. CWR.....0 percent. LAL.....1. Max temperature.....84-87. Min humidity.....30-35 percent. Wind (20 ft).....West winds 12 to 21 mph with gusts to around 30 mph. Ridgetop wind.....West winds 15 to 25 mph with gusts to 30 mph. Mixing height.....2300 ft AGL. Transport winds.....West around 25 mph. Haines Index.....4 or low potential for large plume dominated fire growth.			
.WEDNESDAY NIGHT...			
Sky/weather.....Mostly clear (5-15 percent). CWR.....0 percent. LAL.....1. Min temperature.....55-60. Max humidity.....75-80 percent. Wind (20 ft).....West winds 12 to 20 mph with gusts to around 25 mph. Ridgetop wind.....West winds 15 to 25 mph with gusts to around 30 mph. Mixing height.....600 ft AGL. Transport winds.....West around 25 mph. Haines Index.....4 or low potential for large plume dominated fire growth.			
.THURSDAY...			
Sky/weather.....Sunny (5-15 percent). CWR.....0 percent. LAL.....1. Max temperature.....79-82. Min humidity.....34-39 percent. Wind (20 ft).....West winds 11 to 21 mph. Ridgetop wind.....West winds 15 to 25 mph. Mixing height.....3400 ft AGL. Transport winds.....West around 22 mph. Haines Index.....4 or low potential for large plume dominated fire growth.			
9. Prepared by (Name and Position) Ryan Scharnhorst			

Division/Group Assignment List (ICS 204 WF)
 Controlled Unclassified Information//Basic

1. Incident Name:		3				
LYLE HILL		Branch:		Division/Group ALPHA		
2. Operational Period: DAY SHIFT						
Date/Time From: 07/14/2021 0600	WED	Date/Time To: 07/14/2021 1800	WED			
4. Operations Personnel						
OPERATIONS CHIEF WES LONG		BRANCH DIRECTOR				
DIVISION/GROUP SUPERVISOR PAUL KIMBALL		DIVISION/GROUP SUPERVISOR				
AIR ATTACK SUPERVISOR						
5. Resources Assigned this Period						
Strike Team / Task Force / Resource Designator	LWD	Leader	Number Persons	Drop Off PT./Time	Pick Up PT./Time	
OLYMPIC ST	07/27	SUND	17			
6. Control Operations/Work Assignments:						
Task: Establish control lines. Identify opportunities to go direct when possible.						
Purpose: Keep the fire footprint as small as possible and limit fire spread.						
End State: Full suppression.						
7. Special Instructions:						
Poison Oak hazards Dangerous tree hazards Snakes Rolling hazards/steep terrain						
8. Division/Group Communication Summary						
Function	Channel	RX Frequency N/W	RX Tone/NAC	TX Frequency N/W	TX Tone/NAC	Mode
COMMAND						
TACTICAL						
LOGISTICS						
AIR TO GROUND						
9. Prepared By (Resource Unit Leader)		Approved By (Planning Section Chief)		Date	Time	
B DODGE				07/13/2021	1543	

Division/Group Assignment List (ICS 204 WF)

Controlled Unclassified Information//Basic

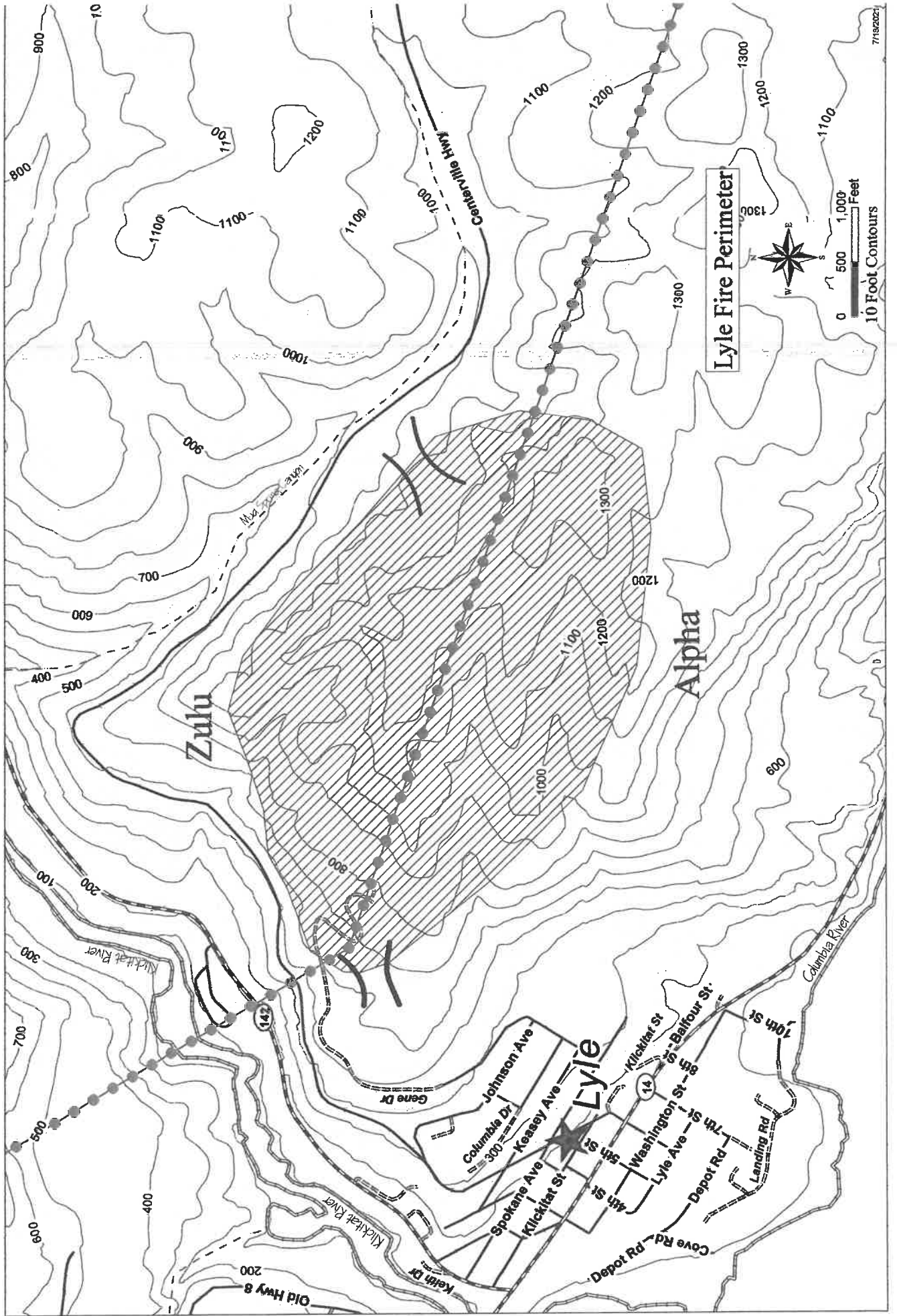
1. Incident Name:		3.				
LYLE HILL		Branch:		Division/Group MIKE		
2. Operational Period: DAY SHIFT						
Date/Time From: 07/14/2021 0600	WED	Date/Time To: 07/14/2021 1800	WED			
4. Operations Personnel						
OPERATIONS CHIEF		BRANCH DIRECTOR				
DIVISION/GROUP SUPERVISOR		AIR ATTACK SUPERVISOR				
5. Resources Assigned this Period						
Strike Team / Task Force / Resource Designator	LWD	Leader	Number Persons	Drop Off PT./Time	Pick Up PT./Time	
6. Control Operations/Work Assignments:						
7. Special Instructions:						
8. Division/Group Communication Summary						
Function	Channel	RX Frequency NW	RX Tone/NAC	TX Frequency NW	TX Tone/NAC	Mode
COMMAND						
TACTICAL						
LOGISTICS						
AIR TO GROUND						
9. Prepared By (Resource Unit Leader)		Approved By (Planning Section Chief)		Date	Time	
				07/13/2021	1543	

Division/Group Assignment List (ICS 204 WF)
Controlled Unclassified Information//Basic

1. Incident Name:		3.				
LYLE HILL		Branch:		Division/Group		
2. Operational Period: DAY SHIFT				ZULU		
Date/Time From: 07/14/2021 0600 WED	Date/Time To: 07/14/2021 1800 WED					
4. Operations Personnel						
OPERATIONS CHIEF WES LONG		BRANCH DIRECTOR				
DIVISION/GROUP SUPERVISOR AARON BIBE		AIR ATTACK SUPERVISOR				
5. Resources Assigned this Period						
Strike Team / Task Force / Resource Designator	LWD	Leader	Number Persons	Drop Off PT./Time	Pick Up PT./Time	
LARCH HC2 2(10) MODULES	07/27		20			
AHTANUM		MILES POLLACK	20			
DOZER		HOLTMAN	2			
SCENIC 602			4			
SCENIC 603		HARPER	4			
NORTH COLUMBIA		CHESTER	20			
6. Control Operations/Work Assignments:						
Task: Establish control lines. Identify opportunities to go direct when possible.						
Purpose: Keep the fire footprint as small as possible and limit fire spread.						
End State: Full suppression.						
7. Special Instructions:						
Poison Oak hazards Dangerous tree hazards Snakes Rolling hazards/steep terrain						
8. Division/Group Communication Summary						
Function	Channel	RX Frequency N/W	RX Tone/NAC	TX Frequency N/W	TX Tone/NAC	Mode
COMMAND						
TACTICAL						
LOGISTICS						
AIR TO GROUND						
9. Prepared By (Resource Unit Leader)			Approved By (Planning Section Chief)		Date	Time
					07/13/2021	1543

Division/Group Assignment List (ICS 204 WF)
Controlled Unclassified Information//Basic

1. Incident Name:		3.				
LYLE HILL		Branch:		Division/Group		
2. Operational Period: DAY SHIFT				STRUCTURE PROTECTION		
Date/Time From: 07/14/2021 0600 WED	Date/Time To: 07/14/2021 1800 WED					
4. Operations Personnel						
OPERATIONS CHIEF WES LONG		BRANCH DIRECTOR				
DIVISION/GROUP SUPERVISOR		AIR ATTACK SUPERVISOR				
5. Resources Assigned this Period						
Strike Team / Task Force / Resource Designator	LWD	Leader	Number Persons	Drop Off PT./Time	Pick Up PT./Time	
SE STRIKE TEAM	07/27	BONNIE RODGERS	16			
CENTRAL STRIKE TEAM		SEALS	14			
6. Control Operations/Work Assignments:						
Task: Establish protection lines 100 feet around primary structures.						
Purpose: Keep the fire footprint as small as possible and limit any structural fire damage.						
End State: Full suppression.						
7. Special Instructions:						
Poison Oak hazards Dangerous tree hazards Snakes Rolling hazards/steep terrain						
8. Division/Group Communication Summary						
Function	Channel	RX Frequency N/W	RX Tone/NAC	TX Frequency N/W	TX Tone/NAC	Mode
COMMAND						
TACTICAL						
LOGISTICS						
AIR TO GROUND						
9. Prepared By (Resource Unit Leader)		Approved By (Planning Section Chief)		Date	Time	
B DODGE				07/13/2021	1543	



Division/Group Assignment List (ICS 204 WF)
Controlled Unclassified Information//Basic

1. Incident Name:		3.				
LYLE HILL		Branch:		Division/Group INSURANCE		
2. Operational Period: DAY SHIFT						
Date/Time From: 07/14/2021 0600	WED	Date/Time To: 07/14/2021 1800	WED			
4. Operations Personnel						
BRANCH DIRECTOR		OPERATIONS CHIEF				
DIVISION/GROUP SUPERVISOR		CLARK 307-214-6908	AIR ATTACK SUPERVISOR			
5. Resources Assigned this Period						
Strike Team / Task Force / Resource Designator	LWD	Leader	Number Persons	Drop Off PT./Time	Pick Up PT./Time	
E-549		ENEIM 707-601-6069	2			
E-635		SIPES 619-248-6542	2			
E-631		GALLAGHER 406-224-0421	2			
E-5415		MARTINEZ 787-316-0089	2			
GFP-24		KNIGHT 479-871-0089	2			
GFP-27		MAAHS 541-997-7194	2			
ELK 1		MOYER 360-421-7047	2			
6. Control Operations/Work Assignments:						
7. Special Instructions:						
8. Division/Group Communication Summary						
Function	Channel	RX Frequency N/W	RX Tone/NAC	TX Frequency N/W	TX Tone/NAC	Mode
COMMAND						
TACTICAL						
LOGISTICS						
AIR TO GROUND						
9. Prepared By (Resource Unit Leader)		Approved By (Planning Section Chief)		Date	Time	
RYAN SCHARNHORST		RYAN SCHARNHORST		07/13/2021	2007	

INCIDENT RADIO COMMUNICATIONS PLAN		1. Incident Name LYLE HILL		2. Date/ Time Prepared 7/14/2021 6:00		3. Operational Period Date/Time 7/14/2021 18:00	
4. Basic Radio Channel Utilization							
Mode: W=Wideband Analog, N=Narrowband Analog, D=Digital, M=Mixed							
Channel	Function	Frequency	Tone	Mode	Assignment	Remarks	
1	TAC 1	RX: 151.3100	192.8	N	DIV A	TACTICAL CHANNEL	
		TX: 151.3100	192.8				
2	TAC 2	RX: 151.2125	192.8	N	DIV Z	TACTICAL CHANNEL	
		TX: 151.2125	192.8				
3	TAC 3	RX: 151.3325	192.8	N	STRUCTURE PROTECTION	TACTICAL CHANNEL	
		TX: 151.3325	192.8				
4	TAC 4	RX: 151.3400	192.8	N	DIV M	TACTICAL CHANNEL	
		TX: 151.3400	192.8				
5	CMD 5	RX: 159.2400	192.8	N	ALL INCIDENT	COMMAND CHANNEL	
		TX: 151.2650	192.8				
6	SE DEFIANCE	RX: 159.3750	127.3	N	CWICC - WENATCHEE DISPATCH	MOUNT DEFIANCE	
		TX: 151.3700	127.3				
7	A/G PRI	RX: 166.6125	0.0	N	PRIMARY A/G	AIR TO GROUND	
		TX: 166.6125	0.0				
8	A/G SEC	RX: 169.2000	0.0	N	SECONDARY A/G	AIR TO GROUND	
		TX: 169.2000	0.0				
9	WEATHER	RX: 162.4000	0.0	W	WEATHER	WEATHER	
		TX: 0.0000	0.0				
10	BLANK	RX: 0.0000	0.0	N	BLANK	BLANK	
		TX: 0.0000	0.0				
11	REDNET	RX: 153.8300	0.0	N	INTEROP	TACTICAL CHANNEL	
		TX: 153.8300	0.0				
12	KL TAC 1	RX: 154.0700	82.5	N	LOCAL	TACTICAL CHANNEL	
		TX: 154.0700	82.5				
13	KL TAC 2	RX: 154.3550	82.5	N	LOCAL	TACTICAL CHANNEL	
		TX: 154.3550	82.5				
14	CO FIRE	RX: 154.1300	162.2	N	LOCAL	LOCAL REPEATER	
		TX: 158.8800	167.9				
15	WEST OPS	RX: 154.8900	97.4	N	LOCAL	LOCAL REPEATER	
		TX: 158.8500	167.9				
16	AIRGUARD	RX: 168.6250	0.0	N	ALL INCIDENT	EMERGENCY COMMS WITH AIRCRAFT	
		TX: 168.6250	110.9				
5. Prepared by (Communications Unit)							
CHRIS PUGH (COMT)							

SAFETY MESSAGE/PLAN (ICS 208)

1. Incident Name: Lyle Hill Fire

2. Operational Period: Date From: 7/14/2021
Time From: 7/14/2021

Date To: 0600
Time To: 1800

3. Safety Message/Expanded Safety Message, Safety Plan, Site Safety Plan:

- Use extreme caution while traveling to and from fire. Route to ICP goes through a residential area and children are at play.
- Identify EMT 's and Medics on your division, write down their names and contact info. Follow the Medical Incident Report (9 Line) if there is a Medical Incident. Spend some time today reviewing the Medical Incident Report.
- Weather is changing a little today. Temperatures are hot, maintain hydration. Use both water and electrolyte drinks.
- Avoid working under high voltage BPA power lines, use extreme caution if you need to work under power lines. Exit the area immediately during times of thick smoke.
- Use extreme caution working around snags. Mark Hazard trees if you can safely.
- Report of Poison Oak in the fire area. Remember (leaves of three, let it be)
- Maintain: Lookouts, Communications, Escape Routes and Safety Zones (LCES)
- If you don't learn something from each fire you go on, it's time you find another job.
- A good fire season is when everyone is around for Christmas dinner.

Today's Firefighting Order: #1 Keep informed on fire weather conditions and forecast.



4. Site Safety Plan Required? Yes No
Approved Site Safety Plan(s) Located At:

5. Prepared by: Name: Don Fortier

Position/Title: SOFR

Signature: _____

ICS 208

IAP Page _____

Date/Time: 7/13/2021 1700 _____

MEDICAL PLAN	1. Incident Name	2. Date Prepared	3. Time Prepared	4. Operational Period				
	Lyle Hill Fire	July 14, 2021	1700	0600 - 1800				
5. Incident Medical Aid Station								
Medical Aid Stations		Location			Paramedics			
					Yes	No		
No Aid Station								
6. Transportation								
A. Ambulance Services								
Name	Address		Phone		Paramedics			
					Yes	No		
Klickitat Co. EMS	Dallesport WA		911		X			
Klickitat Co. EMS	White Salmon WA		911		X			
Lifeflight Network (Air)	Dallesport WA		800-452-7434		X			
Airlift Northwest Yakima (Air)	Yakima, Pasco, East Wenatchee WA		800-426-2430		X			
B. Incident Ambulances								
Name	Location			Paramedics				
				Yes	No			
Ballard Ambulance	Fire Line			X				
7. Hospitals								
Name	Address	Travel Time		Phone	Helipad		Burn Center	
		Air	Ground		Yes	No	Yes	No
Skyline Hospital	211 Skyline Dr, Wh. Salmon, WA 98672 (509) 493-1101	10 Min.	15 Min	509-493-1101	X			X
Mid-Columbia Medical Center	1700 E 19 th St The Dalles OR 97058 (541) 296-1111	10 min.	30 min	509-733-4022	X			X
Harborview Medical Center	325 9 th Ave, Seattle, WA 98104 (206) 744-3000 N47 36.1 W122 19.3			206-744-3000 206-744-4074 ER	X		X	
Legacy Emanuel Medical Center	2801 Gentenbein, Portland, OR N45.34 W122 40.16			503-413-2200 503-413-4121 ER	x		X	
8. Medical Emergency Procedures								
<p>Identify crew EMTs on the line in each Division Prior to engaging. In Case of urgent situation, notify your supervisor and follow the MEDICAL INCIDENT REPORT "9-Line" procedure on pages 118-119 in the 2018 IRPG. Notify operations of needs and location on command channel. Operations will notify CWICC and ICP. Minimize radio traffic and maintain situation awareness.</p>								
Prepared by (Medical Unit Leader)					10. Reviewed by (Safety Officer)			
					Don Fortier			

Finance

“Employees are paid for actual hours worked, with no guarantee of a maximum shift length, unless otherwise specified in a formal, authorized agreement.”

--Interagency Incident Business Management Handbook, Chapter 10

*****MORNING*****

- ✓ **Only those invited to the PRE-BRIEFING Operations meeting may record time before the official briefing start time.**
- ✓ **Contract crews and equipment will start time according to terms of their contract.**
- ✓ **Hourly apparatus time starts upon leaving camp.**
- ✓ **Exception time recorded will be justified on the CTR/Shift Ticket.**
- ✓ **Line Resources must show a 30-minute break OR justified on the CTR.**
- ✓ **Mobilization resources assigned to the line should record 1/2 hour paid lunch in the comment section of their CTR**

*****END OF SHIFT *****

- **All Contract Crew time stops when they return to camp.**
- **Hourly apparatus time stops when they enter camp.**
- **All other personnel are allowed a reasonable time to do vehicle and tool maintenance, generally no more than 30 minutes.**

*****OVER 16 HOUR SHIFT*****

- **Shifts over 16 hours must be signed by the IC prior to submission to Finance.**
- **There must be a justification and a mitigation plan stated on the CTR**

Please turn in Equipment Shift Tickets and CTR's daily

Have a safe shift, stay hydrated

Code of Conduct Incident Personnel



Each individual on this incident is responsible for:

- ☒ Being *ready and able* to perform their assigned duties effectively.
- ☒ Conducting themselves in a manner that treats people with dignity, equality, courtesy, and respect.
- ☒ Abiding by agency ethics and conduct regulations.
- ☒ Reporting any harassment or other inappropriate behavior.

Each individual of this incident has the right to:

- ☒ Work in an environment characterized by safe work practices.
- ☒ Work in a fair and harassment free environment.
- ☒ Say "No" to unwelcome advances or requests for favors.
- ☒ File complaints or grievances through appropriate avenues.

There is zero tolerance for inappropriate behavior while assigned to the incident, including:

- ☒ Illegal drug use
- ☒ Alcohol use
- ☒ Unsafe work practices and activities
- ☒ Discrimination
- ☒ Sexual harassment
- ☒ Fighting, threatening, and abusive behaviors
- ☒ Using social media and electronic communication devices for personal business while engaged in fire assignment duties.
- ☒ Other violations of Fire Service, Washington DNR, and Federal agency standards of conduct.

Failure to adhere to the Code of Conduct could result in dismissal from the incident, with notification to your home unit.

The public expects our best efforts; they see us as professionals in what we say and do. Let's continue to show them we are!

MEDICAL PLAN (ICS 206 WF)

Controlled Unclassified Information//Basic

Medical Incident Report

FOR A NON-EMERGENCY INCIDENT, WORK THROUGH CHAIN OF COMMAND TO REPORT AND TRANSPORT INJURED PERSONNEL AS NECESSARY.

FOR A MEDICAL EMERGENCY: IDENTIFY ON SCENE INCIDENT COMMANDER BY NAME AND POSITION AND ANNOUNCE "MEDICAL EMERGENCY" TO INITIATE RESPONSE FROM IMT COMMUNICATIONS/DISPATCH.

Use the following items to communicate situation to communications/dispatch.

- 1. CONTACT COMMUNICATIONS / DISPATCH** (Verify correct frequency prior to starting report)
Ex: "Communications, Div. Alpha. Stand-by for Emergency Traffic."
- 2. INCIDENT STATUS:** Provide incident summary (including number of patients) and command structure.
Ex: "Communications, I have a Red priority patient, unconscious, struck by a falling tree. Requesting air ambulance to Forest Road 1 at (Lat./Long.) This will be the Trout Meadow Medical, IC is TFLD Jones. EMT Smith is providing medical care."

Severity of Emergency / Transport Priority	<input type="checkbox"/> RED / PRIORITY 1 Life or limb threatening injury or illness. Evacuation need is IMMEDIATE Ex: Unconscious, difficulty breathing, bleeding severely, 2 ^o - 3 ^o burns more than 4 palm sizes, heat stroke, disoriented. <input type="checkbox"/> YELLOW / PRIORITY 2 Serious injury or illness. Evacuation may be DELAYED if necessary. Ex: Significant trauma, unable to walk, 2 ^o - 3 ^o burns not more than 1-3 palm sizes. <input type="checkbox"/> GREEN / PRIORITY 3 Minor injury or illness. Non-Emergency transport Ex: Sprains, strains, minor heat-related illness.	
Nature of Injury or Illness & Mechanism of Injury		Brief Summary of Injury or Illness (Ex: Unconscious, Struck by Falling Tree)
Transport Request		Air Ambulance / Short Haul/Hoist Ground Ambulance / Other
Patient Location		Descriptive Location & Lat. / Long. (WGS84)
Incident Name		Geographic Name + "Medical" (Ex: Trout Meadow Medical)
On-Scene Incident Commander		Name of on-scene IC of Incident within an Incident (Ex: TFLD Jones)
Patient Care		Name of Care Provider (Ex: EMT Smith)

3. INITIAL PATIENT ASSESSMENT: Complete this section for each patient as applicable (start with the most severe patient)

Patient Assessment: See IRPG page 106

Treatment:

4. TRANSPORT PLAN:

Evacuation Location (if different): (Descriptive Location (drop point, intersection, etc.) or Lat. / Long.) Patient's ETA to Evacuation Location:

Helispot / Extraction Site Size and Hazards:

5. ADDITIONAL RESOURCES / EQUIPMENT NEEDS:

Example: Paramedic/EMT, Crews, Immobilization Devices, AED, Oxygen, Trauma Bag, IV/Fluid(s), Splints, Rope rescue, Wheeled litter, HAZMAT, Extrication

6. COMMUNICATIONS: Identify State Air/Ground EMS Frequencies and Hospital Contacts as applicable

Function	Channel Name/Number	Receive (RX)	Tone/NAC *	Transmit (TX)	Tone/NAC *
COMMAND					
AIR-TO-GRND					
TACTICAL					

7. CONTINGENCY: Considerations: If primary options fail, what actions can be implemented in conjunction with primary evacuation method? Be thinking ahead.

8. ADDITIONAL INFORMATION: Updates/Changes, etc.

REMEMBER: Confirm ETA's of resources ordered. Act according to your level of training. Be Alert. Keep Calm. Think Clearly. Act Decisively.