

INCIDENT ACTION PLAN

---

# LYLE HILL FIRE

---

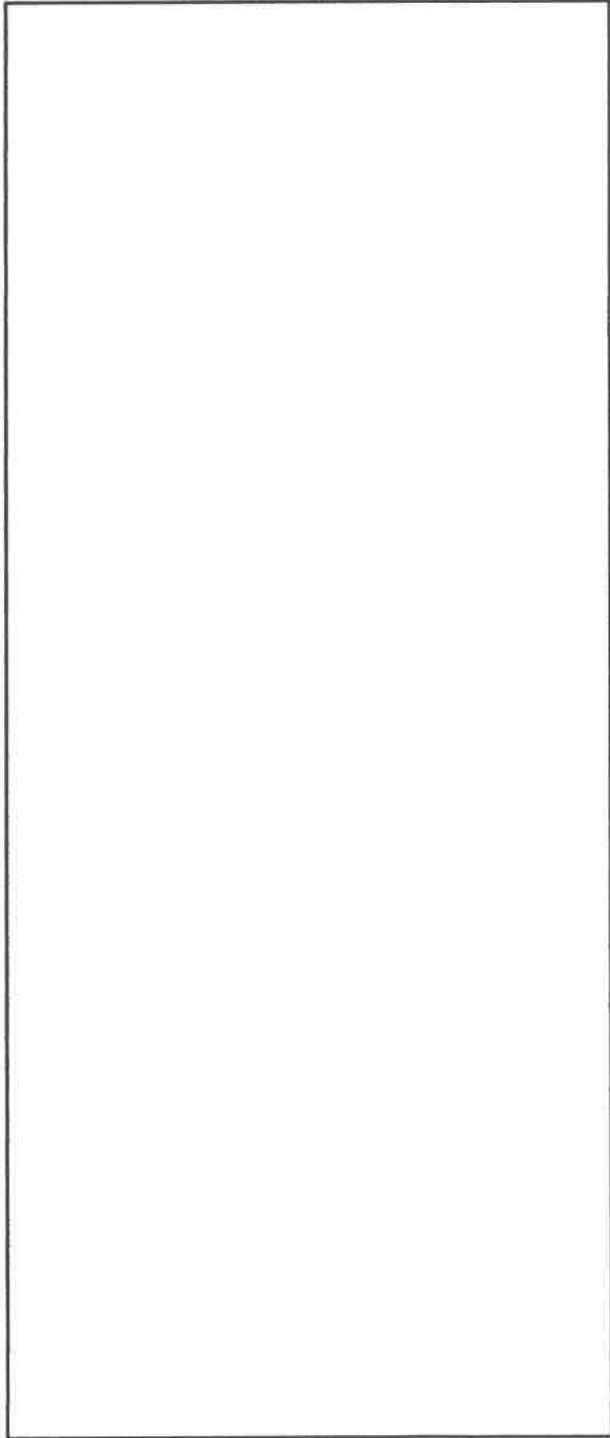
7/15 - 7/16 2021

0600-0600 Operational Period

WA-SES-000354


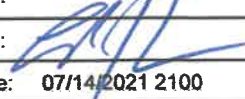
WA-WFS-000205

221-LAK



% of Effort		
	Ground	Air
DIV A		
DIV M		
DIV		
DIV Z		

## INCIDENT OBJECTIVES (ICS 202)

<b>1. Incident Name:</b>	<b>2. Operational Period: 24 HOUR</b>	
LYLE HILL	Date/Time From: 07/15/2021 0600 THU	Date/Time To: 07/16/2021 0600 FRI
<b>3. Objective(s):</b>		
<p>Provide for the safety of firefighters and the public while fighting fire aggressively and applying the 10 and 18, LCES and risk management process.</p> <p>Engage and take suppression actions to limit fire acreage growth and protect structures to contain the fire south and west of the Centerville Hwy</p> <p>Maintain best management practices to limit the spread and exposure of the COVID-19 virus within the crew, on the line, in camp or to the surrounding community.</p> <p>Act professionally and in a manner to foster good relationships with public, landowners, cooperators, and agencies. Provide timely and accurate information as it becomes available.</p> <p>Maximize opportunities for cost savings without jeopardizing public or firefighter safety.</p> <p>Maintain awareness of firefighting impact on the landscape, including areas of eco-systems or habitat, minimize and report damage in areas that may be affected and implement tactics accordingly.</p>		
<b>4. Operational Period Command Emphasis:</b>		
<p>Engaging fire must be done with the highest priority on safety based on the terrain, topography, and fire behavior encountered. As the incident continues to expand and challenge containment, be aware of the situations and hazards developing around you and our crew. Take the time to employ the best tactics and risk mitigation to achieve the overall strategy of containing the fire.</p> <p>Plan accordingly using risk mitigation, monitor the weather forecasts for upcoming changes and how that will impact fire behavior. Remain diligent about fatigue, and maintain awareness of personal and crew health.</p>		
<b>General Situational Awareness:</b>		
<p><b>5. Site Safety Plan Required?</b> Yes <input type="checkbox"/> No <input checked="" type="checkbox"/></p> <p><b>Approved Site Safety Plan(s) Located</b></p>		
<b>6. Incident Action Plan</b> (the items checked below are included in this Incident Action Plan):		
<input checked="" type="checkbox"/> ICS 202 <input checked="" type="checkbox"/> ICS 203 <input checked="" type="checkbox"/> ICS 204 <input checked="" type="checkbox"/> ICS 205 <input checked="" type="checkbox"/> ICS 205A <input checked="" type="checkbox"/> ICS 206	<input type="checkbox"/> ICS 207 <input checked="" type="checkbox"/> ICS 208 <input checked="" type="checkbox"/> ICS 220 <input checked="" type="checkbox"/> Map/Chart <input checked="" type="checkbox"/> Weather Forecast/Tides/Currents	<b>Other Attachments:</b> <input type="checkbox"/> _____ <input type="checkbox"/> _____ <input type="checkbox"/> _____
<b>7. Prepared by:</b> RYAN SCHARNHORST	<b>Position/Title:</b> PSC3	<b>Signature:</b> 
<b>8. Approved by Incident Commander:</b> Name: LEONARD JOHNSON		<b>Signature:</b> 
ICS 202	IAP Page	<b>Date/Time:</b> 07/14/2021 2100

## ORGANIZATION ASSIGNMENT LIST (ICS 203)

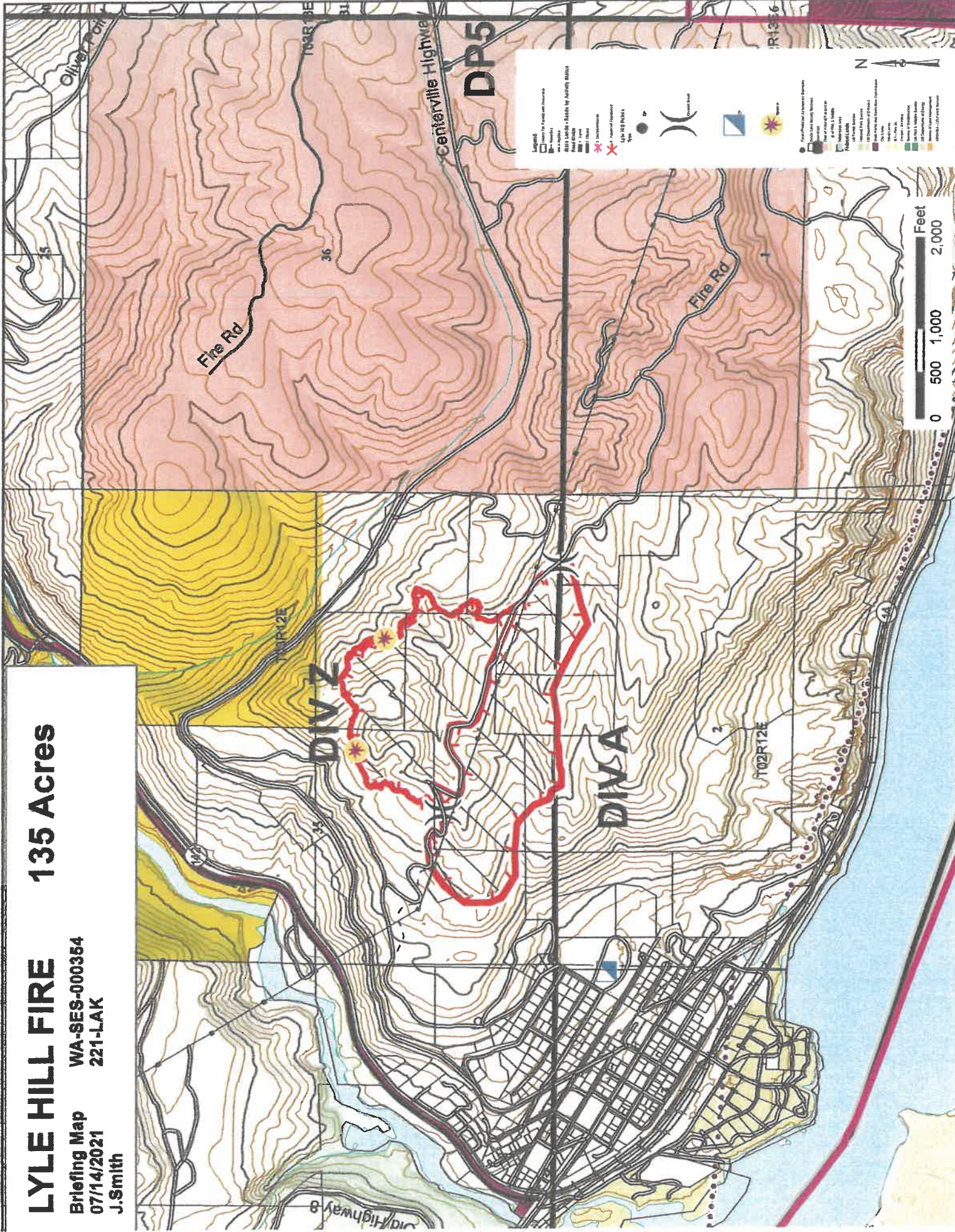
<b>1. Incident Name:</b>		<b>2. Operational Period:</b> 24 HOUR	
LYLE HILL		Date/Time From: 07/15/2021 0600	Date/Time To: 07/16/2021 0600
		THU	FRI
<b>3. Incident Commander(s) and Command Staff:</b>		<b>DEPUTY OPS SECTION CHIEF</b>	
IC/UC	LEONARD JOHNSON	<b>STAGING AREA</b>	
DEPUTY			
SAFETY OFFICER	DON FORTIER	DIVISION/GROUP	ALPHA
SAFETY OFFICER	MIKE HARRIS	DIVISION/GROUP	ZULU
INFORMATION OFFICER	SHEARER, BEN MASSEY, COLE (T)	DIVISION/GROUP	STRUCTURE PROTECTION
<b>4. Agency/Organization Representative(s):</b>		<b>7b. Air Operations Branch:</b>	
Agency/Organization	Name	AIR OPS BRANCH DIRECTOR	
WADNR	JORDAN TSUBOTA WYATT LEIGHTON	AIR ATTACK SUPERVISOR	
		AIR SUPPORT SUPERVISOR	
		HELICOPTER COORDINATOR	
		AIR TANKER COORDINATOR	
<b>5. Planning Section:</b>		<b>8. Finance/Administration Section:</b>	
CHIEF	RYAN SCHARNHORST	CHIEF	BOB THOMPSON
DEPUTY	BRIAN DODGE	DEPUTY	
RESOURCES UNIT		TIME UNIT	
SITUATION UNIT		PROCUREMENT UNIT	
DOCUMENTATION UNIT		COMPENSATION UNIT	
DEMOBILIZATION UNIT	JENNIFER NORTON (T)	COST UNIT	
FIRE BEHAVIOR ANALYST			
HUMAN RESOURCE SPECIALIST			
TRAINING SPECIALIST			
GIS SPECIALIST	RACHEL MICKEY (T)		
TECHNOLOGY SUPPORT SPECIALIST			
INCIDENT METEOROLOGIST			
<b>6. Logistics Section:</b>			
CHIEF	JOSH AMBROSE		
DEPUTY			
SUPPLY UNIT			
RADO	PAUL CARLYLE (T)		
GROUND SUPPORT UNIT			
GROUND SUPPORT UNIT	ALANDRA SWORDS (T)		
RADO	ERIC SCHEARER (T)		
SECURITY UNIT			
FOOD UNIT			
<b>7. Operations Section:</b>			
OPS SECTION CHIEF	WESLEY LONG		
DAY OPS SECTION CHIEF			
NIGHT OPS SECTION CHIEF			
PLANNING OPS			
<b>9. Prepared By:</b>	<b>Name:</b> RYAN SCHARNHORST	<b>Position/Title:</b> PSC3	<b>Signature:</b>
ICS 203	IAP Page	<b>Date/Time:</b> 07/14/2021 1003	

WEATHER	1. Incident Name Lyle Hill	2. Date Prepared 7/14/2021	3. Time Prepared 2100
<p>...RED FLAG WARNING IN EFFECT UNTIL 11 PM PDT THURSDAY...  ...HEAT ADVISORY IN EFFECT UNTIL 9 PM PDT THIS EVENING...</p> <p>.DISCUSSION...Cooler air is beginning to filter into the region with a marine push/cold front. Windy and gusty west winds will persist into Friday. Although daytime humidities will be up some, fire danger will remain high given the strong and gusty winds.</p> <p>.THURSDAY...</p> <p>Sky/weather.....Sunny (0-10 percent).  CWR.....0 percent.  LAL.....1.  Max temperature.....77-80.  Min humidity.....32-37 percent.  Wind (20 ft).....West winds 15 to 21 mph with gusts to around 26 mph.  Ridgetop wind.....West winds 20 to 25 mph with gusts 30 mph.  Mixing height.....2500 ft AGL.  Transport winds.....West around 25 mph.  Haines Index.....5 or moderate potential for large plume dominated fire growth.</p> <p>.THURSDAY NIGHT...</p> <p>Sky/weather.....Clear (0-10 percent).  CWR.....0 percent.  LAL.....1.  Min temperature.....55-59.  Max humidity.....80-85 percent.  Wind (20 ft).....West winds 15 to 20 mph with gusts to around 25 mph.  Ridgetop wind.....West winds 20 to 25 mph with gusts to 30 mph.  Mixing height.....1000 ft AGL.  Transport winds.....West around 25 mph.  Haines Index.....4 or low potential for large plume dominated fire growth.</p>			
<p>9. Prepared by (Name and Position)  <p style="text-align: center;"><i>Ryan Scharnhorst</i></p> </p>			

# LYLE HILL FIRE 135 Acres

Briefing Map  
07/14/2021  
J. Smith

WA-SES-000354  
221-LAK



**Division/Group Assignment List (ICS 204 WF)**  
**Controlled Unclassified Information//Basic**

<b>1. Incident Name:</b>			<b>3.</b>			
LYLE HILL			<b>Branch:</b>		<b>Division/Group</b>	
<b>2. Operational Period:</b> 24 HOUR					<b>ALPHA</b>	
Date/Time From: 07/15/2021 0600	THU	Date/Time To: 07/16/2021 0600	FRI			
<b>4. Operations Personnel</b>						
<b>OPERATIONS CHIEF</b> WES LONG 360-281-9585		<b>BRANCH DIRECTOR</b>				
<b>DIVISION/GROUP SUPERVISOR</b> PAUL KIMBALL 509-863-5133		<b>DIVISION/GROUP SUPERVISOR</b>				
<b>AIR ATTACK SUPERVISOR</b>						
<b>5. Resources Assigned this Period</b>						
<b>Strike Team / Task Force / Resource Designator</b>		<b>LWD</b>	<b>Leader</b>	<b>Number Persons</b>	<b>Drop Off PT./Time</b>	<b>Pick Up PT./Time</b>
O-12 LL MEADOWS FALLERS, FLATZ/PETTIT FMOD				2		
OLYMPIC ST		07/19	DAVID SUND 360-880-5802	1		
DNR E1103		07/19	JEFF HAPPE 360-890-1177	4		
DNR E1203		07/19	FELIPE BARRAGAN 360-640-2608	4		
DNR E2406		07/18	CAMERON CLARENCE 360-623-0483	3		
DNR E2303		07/18	JUSTIN BRADY 360-762-4971	3		
<b>6. Control Operations/Work Assignments:</b>						
Task: Establish control lines. Identify opportunities to go direct when possible.						
Purpose: Keep the fire footprint as small as possible and limit fire spread.						
End State: Full suppression.						
<b>7. Special Instructions:</b>						
Poison Oak hazards Dangerous tree hazards Snakes Rolling hazards/steep terrain						
<b>8. Division/Group Communication Summary</b>						
<b>Function</b>	<b>Channel</b>	<b>RX Frequency N/W</b>	<b>RX Tone/NAC</b>	<b>TX Frequency N/W</b>	<b>TX Tone/NAC</b>	<b>Mode</b>
COMMAND	5	159.2400	192.8	151.2650	192.8	
TACTICAL	1	151.3100	192.8	151.3100	192.8	N
AIR TO GROUND	7	166.6125	0.0	166.6125	0.0	
<b>9. Prepared By (Resource Unit Leader)</b>			<b>Approved By (Planning Section Chief)</b>		<b>Date</b>	<b>Time</b>
B DODGE					07/14/2021	1003

**Division/Group Assignment List (ICS 204 WF)**  
**Controlled Unclassified Information//Basic**

<b>1. Incident Name:</b>		<b>3.</b>				
LYLE HILL		<b>Branch:</b>		<b>Division/Group</b>		
<b>2. Operational Period:</b> 24 HOUR				<b>STRUCTURE PROTECTION</b>		
<b>Date/Time From:</b> 07/15/2021 0600 THU	<b>Date/Time To:</b> 07/16/2021 0600 FRI					
<b>4. Operations Personnel</b>						
<b>OPERATIONS CHIEF</b> WES LONG 360-281-9585		<b>BRANCH DIRECTOR</b>				
<b>DIVISION/GROUP SUPERVISOR</b> JOTHAN MCGAUGHEY		<b>AIR ATTACK SUPERVISOR</b>				
<b>5. Resources Assigned this Period</b>						
<b>Strike Team / Task Force / Resource Designator</b>	<b>LWD</b>	<b>Leader</b>	<b>Number Persons</b>	<b>Drop Off PT./Time</b>	<b>Pick Up PT./Time</b>	
0-6 STRUCTURE PROTECTION DIVISION TFLD	07/28	JOTHAN MCGAUGHEY	1			
O-2109 CENTRAL STRIKE TEAM STEN	07/27	GREG SEALS 360 480-9485	1			
E-2110 WEST THURSTON FIRE B1-2	07/27	LYON, COLBY 360 827-0981	2			
E-2111 THURSTON 9 BR 95	07/27	AMREN, BRIAN 360 431-2854	2			
E-2112 THURSTON 12 BRUSH 41	07/27	JED NEUMEIER 360 359-8552	2			
E-2113 CLALLAM COUNTY FD 3 B-33	07/27	JOEL BOWER 360 461-7390	3			
E-2114 HOODSPORT BR1-1	07/27	TORY UNDERWOOD 360 401-9941	3			
E-2115 TENDER 41	07/27	JACOB ELLIS 564 202-6171	1			
<b>6. Control Operations/Work Assignments:</b>						
Task: Establish protection lines 100 feet around primary structures.						
Purpose: Keep the fire footprint as small as possible and limit any structural fire damage.						
End State: Full suppression.						
<b>7. Special Instructions:</b>						
Poison Oak hazards Dangerous tree hazards Snakes Rolling hazards/steep terrain						
Check with DIVS for demob time in early afternoon.						
<b>8. Division/Group Communication Summary</b>						
<b>Function</b>	<b>Channel</b>	<b>RX Frequency N/W</b>	<b>RX Tone/NAC</b>	<b>TX Frequency N/W</b>	<b>TX Tone/NAC</b>	<b>Mode</b>
COMMAND	5	159.2400	192.8	151.2650	192.8	
TACTICAL	3	151.3325	192.8	151.3325	192.8	
AIR TO GROUND	7	166.6125	0.0	166.6125	0.0	
<b>9. Prepared By (Resource Unit Leader)</b>			<b>Approved By (Planning Section Chief)</b>		<b>Date</b>	<b>Time</b>
B DODGE					07/14/2021	1003

**Division/Group Assignment List (ICS 204 WF)**  
**Controlled Unclassified Information//Basic**

<b>1. Incident Name:</b>			<b>3.</b>			
LYLE HILL			<b>Branch:</b>		<b>Division/Group</b>	
<b>2. Operational Period:</b> 24 HOUR					<b>ZULU</b>	
<b>Date/Time From:</b> 07/15/2021 0600 THU			<b>Date/Time To:</b> 07/16/2021 0600 FRI			
<b>4. Operations Personnel</b>						
<b>OPERATIONS CHIEF</b>		WES LONG 360-581-9672		<b>BRANCH DIRECTOR</b>		
<b>DIVISION/GROUP SUPERVISOR</b>		AARON BIBE 509-591-8620		<b>AIR ATTACK SUPERVISOR</b>		
<b>5. Resources Assigned this Period</b>						
<b>Strike Team / Task Force / Resource Designator</b>		<b>LWD</b>	<b>Leader</b>	<b>Number Persons</b>	<b>Drop Off PT./Time</b>	<b>Pick Up PT./Time</b>
C-4 NORTH COLUMBIA			DYLON CHESTER 509-993-5664	20		
O-11 LL MEADOW FALLERS SMITH/WARD FMOD		07/27		2		
LARCH HC2 2(10) MODULES		07/27	ERIC PETERS 360-949-3312	20		
SCENIC 602				4		
SCENIC 603			HARPER	4		
<b>6. Control Operations/Work Assignments:</b>						
Task: Establish control lines. Identify opportunities to go direct when possible.						
Purpose: Keep the fire footprint as small as possible and limit fire spread.						
End State: Full suppression.						
<b>7. Special Instructions:</b>						
Poison Oak hazards Dangerous tree hazards Snakes Rolling hazards/steep terrain						
<b>8. Division/Group Communication Summary</b>						
<b>Function</b>	<b>Channel</b>	<b>RX Frequency N/W</b>	<b>RX Tone/NAC</b>	<b>TX Frequency N/W</b>	<b>TX Tone/NAC</b>	<b>Mode</b>
COMMAND	5	159.2400	192.8	151.2650	192.8	
TACTICAL	2	151.2125	192.8	151.2125	192.8	
AIR TO GROUND	7	166.6125	0.0	166.6125	0.0	
<b>9. Prepared By (Resource Unit Leader)</b>			<b>Approved By (Planning Section Chief)</b>		<b>Date</b>	<b>Time</b>
					07/14/2021	1003



**Division/Group Assignment List (ICS 204 WF)**  
**Controlled Unclassified Information//Basic**

<b>1. Incident Name:</b>			<b>3.</b>			
LYLE HILL			<b>Branch:</b>		<b>Division/Group</b>	
<b>2. Operational Period:</b> 24 HOUR					<b>INSURANCE</b>	
<b>Date/Time From:</b> 07/15/2021 0600 THU			<b>Date/Time To:</b> 07/16/2021 0600 FRI			
<b>4. Operations Personnel</b>						
<b>BRANCH DIRECTOR</b>			<b>OPERATIONS CHIEF</b>			
<b>DIVISION/GROUP SUPERVISOR</b> CLARK 307-214-6908			<b>AIR ATTACK SUPERVISOR</b>			
<b>5. Resources Assigned this Period</b>						
<b>Strike Team / Task Force / Resource Designator</b>		<b>LWD</b>	<b>Leader</b>	<b>Number Persons</b>	<b>Drop Off PT./Time</b>	<b>Pick Up PT./Time</b>
E-549			ENEIM 707-601-6069	2		
E-635			SIPES 619-248-6542	2		
E-631			GALLAGHER 406-224-0421	2		
E-5415			MARTINEZ 787-316-0089	2		
GFP-24			KNIGHT 479-871-0089	2		
GFP-27			MAAHS 541-997-7194	2		
ELK 1			MOYER 360-421-7047	2		
<b>6. Control Operations/Work Assignments:</b>						
<b>7. Special Instructions:</b>						
<b>8. Division/Group Communication Summary</b>						
<b>Function</b>	<b>Channel</b>	<b>RX Frequency NW</b>	<b>RX Tone/NAC</b>	<b>TX Frequency NW</b>	<b>TX Tone/NAC</b>	<b>Mode</b>
COMMAND	5	159.2400	192.8	151.2650	192.8	
TACTICAL	2	151.2125	192.8	151.2125	192.8	
TACTICAL	1	151.3100	192.8	151.3100	192.8	
AIR TO GROUND	7	166.6125	0.0	166.6125	0.0	
<b>9. Prepared By (Resource Unit Leader)</b>			<b>Approved By (Planning Section Chief)</b>		<b>Date</b>	<b>Time</b>
RYAN SCHARNHORST			RYAN SCHARNHORST		07/14/2021	1003

**Division/Group Assignment List (ICS 204 WF)**  
 Controlled Unclassified Information//Basic

<b>1. Incident Name:</b>				<b>3.</b>		
LYLE HILL				Branch:	Division/Group  <b>NIGHT</b>	
<b>2. Operational Period: 24 HOUR</b>						
Date/Time From: 07/15/2021 0600 THU		Date/Time To: 07/16/2021 0600 FRI				
<b>4. Operations Personnel</b>						
OPERATIONS CHIEF		WES LONG 360-281-9585		BRANCH DIRECTOR		
DIVISION/GROUP SUPERVISOR		LEATZOW III, VICTOR 360-957-1158		DIVISION/GROUP SUPERVISOR		
AIR ATTACK SUPERVISOR						
<b>5. Resources Assigned this Period</b>						
Strike Team / Task Force / Resource Designator		LWD	Leader	Number Persons	Drop Off PT./Time	Pick Up PT./Time
E-7 NW ENG #1			MEGAN CRITES 360-770-3927	5		
E-6 NW ENG #2			MATHEW FISHER 360-708-5831	5		
<b>6. Control Operations/Work Assignments:</b>						
Task: Patrol and reinforce control lines where needed. Provide for structural protection.						
Purpose: Keep the fire footprint as small as possible and limit fire spread. Limit any damage to primary residence.						
End State: Full suppression.						
<b>7. Special Instructions:</b>						
<b>8. Division/Group Communication Summary</b>						
Function	Channel	RX Frequency N/W	RX Tone/NAC	TX Frequency N/W	TX Tone/NAC	Mode
COMMAND	5	159.2400	192.8	151.2650	192.8	
TACTICAL	2	151.2125	192.8	151.2125	192.8	
TACTICAL	1	151.3100	192.8	151.3100	192.8	
AIR TO GROUND	7	166.6125	0.0	166.6125	0.0	
<b>9. Prepared By (Resource Unit Leader)</b>			<b>Approved By (Planning Section Chief)</b>		<b>Date</b>	<b>Time</b>
RYAN SCHARNHORST					07/14/2021	1945

INCIDENT RADIO COMMUNICATIONS PLAN		1. Incident Name		2. Date/ Time Prepared		3. Operational Period Date/Time	
LYLE HILL		LYLE HILL		7/13/2021 0930		7/13/2021 1000-1800	
4. Basic Radio Channel Utilization							
Channel	Function	Frequency		Tone	Mode	Name	Remarks
		RX:	TX:				
1	TACTICAL	RX:	151.4150	103.5	N	DNR COM	
		TX:	151.4150	103.5			
2	REPEATER	RX:	159.3750	127.3	N	SE DEFIA	LYLE HILL COMMAND
		TX:	151.3700	127.3			
3	REPEATER	RX:	159.3000	103.5	N	GRAYBACK	
		TX:	151.2575	103.5			
4	TACTICAL	RX:	151.3100	103.5	N	DNR TAC 1	LYLE HILL TAC
		TX:	151.3100	103.5			
5	TACTICAL	RX:	151.3400	103.5	N	DNR TAC 2	LYLE HILL TAC
		TX:	151.3400	103.5			
6	REPEATER	RX:	154.1300	162.2	N	CO FIRE	
		TX:	158.8800	167.9			
7	REPEATER	RX:	154.8900	97.4	N	WEST OPS	
		TX:	158.8500	167.9			
8	TACTICAL	RX:	154.0700	82.5	N	KL TAC 1	
		TX:	154.0700	82.5			
9	TACTICAL	RX:	154.3550	82.5	N	KL TAC 2	
		TX:	154.3550	82.5			
10	REPEATER	RX:	169.9500	127.3	N	NSA DEFI	
		TX:	162.6125	162.2			
11	TACTICAL	RX:	169.1250	127.3	N	G WORK 1	
		TX:	169.1250	127.3			
12	TACTICAL	RX:	170.5000	123.0	N	GP WORK 1	
		TX:	170.5000	123.0			
13	REPEATER	RX:	170.3625	127.3	N	SIGNALP	
		TX:	163.0375	127.3			
14	TACTICAL	RX:	166.9750		N	YN TAC 1	
		TX:	166.9750				
15	TACTICAL	RX:	152.0075	100.0	N	CO PAGE	
		TX:					
16	TACTICAL	RX:	159.2700	103.5	N	DNR A/G 1	LYLE HILL AIR TO GROUND
		TX:	159.2700	103.5			
5. Prepared by (Communications Unit)							
JOSH AMBROSE LSC (3)							

**AIR OPERATIONS SUMMARY (ICS 220)**  
Controlled Unclassified Information//Basic

<b>1. Incident Name:</b>		<b>2. Operational Period: 24 HOUR</b>		<b>3. Sunrise:                      Sunset:</b>	
LYLE HILL		Date/Time From: 07/15/2021 0600	THU	Date/Time To: 07/16/2021 0600	FRI
<b>4. Remarks</b> (Safety Notes, Hazards, Air Op Special Equipment, etc.)		<b>5. Ready Alert Aircraft:</b> Medic: _____ New Incident: _____			
<b>7. Personnel:</b>		<b>8. Frequencies:</b>		<b>9. Fixed-Wing</b> (category/kind/type, make/model, N#, base):	
Name:	Phone:	Air/Air Fixed-Wing	AM (Tone)	Air Tactical Group Supervisor Aircraft:	
AIR OPERATIONS BRANCH DIRECTOR		Air/Air Rotary-Wing - Flight Following			
AIR SUPPORT GROUP SUPERVISOR		Air/Ground			
AIR TACTICAL GROUP SUPERVISOR	(720) 272-8483	Command			
HELICOPTER COORDINATOR		Deck Coordinator			
HELIBASE MANAGER		Take-Off & Landing Coordinator			
		Air Guard		Other Fixed-Wing Aircraft:	
<b>11. Prepared by: Name: BDODGE</b>		Position/Title: PSC3 T		Signature:	
<b>ICS 220, Page 1 of 2</b>		Date/Time: 07/14/2021 1003			

**AIR OPERATIONS SUMMARY (ICS 220)**  
Controlled Unclassified Information//Basic

<b>1. Incident Name:</b>		<b>2. Operational Period: 24 HOUR</b>		<b>3. Sunrise:</b>		<b>Sunset:</b>	
LYLE HILL		Date/Time From:	THU	Date/Time To:	FRI	0531	2052
		07/15/2021 0600		07/16/2021 0600			
<b>10. Helicopters</b> (use additional sheets as necessary):							
FAA N#	Category/Kind/Type	Make/Model	Base	Available	Start	Remarks	
H-338	TYPE 2	BELL H1	THE DALLES		0930		
HT-4TH	TYPE2	UH-60A	THE DALLES		0930		
<b>12. Task/Mission/Assignment</b> (category/kind/type and function includes: air tactical, reconnaissance, personnel transport, search and rescue, etc.):							
Category/Kind/Type and Function	Name of Personnel or Cargo (if applicable) or Instructions for Tactical Aircraft			Mission Start	Fly From	Fly To	

## SAFETY MESSAGE/PLAN (ICS 208)

**1. Incident Name:** Lyle Hill Fire

**2. Operational Period:** Date From: 7/15/2021  
Time From: 7/15/2021

Date To: 0600  
Time To: 1800

**3. Safety Message/Expanded Safety Message, Safety Plan, Site Safety Plan:**

- Use extreme caution while traveling to and from fire. Route to ICP goes through a residential area and children are at play.
- Identify EMT 's and Medics on your division, write down their names and contact info. Follow the Medical Incident Report (9 Line) if there is a Medical Incident. Spend some time today reviewing the Medical Incident Report.
- Temperature is a little cooler today but still hot, maintain hydration. Use both water and electrolyte drinks.
- Avoid working under high voltage BPA power lines, use extreme caution if you need to work under power lines. Exit the area immediately during times of thick smoke.
- Use extreme caution working around snags. Mark Hazard trees if you can safely.
- Report of Poison Oak in the fire area. Remember (leaves of three, let it be)
- Maintain: Lookouts, Communications, Escape Routes and Safety Zones (LCES)
- Take care and look out for each other.

**Today's Firefighting Order: #9 Maintain control of your forces at all times.**



**4. Site Safety Plan Required?** Yes  No   
**Approved Site Safety Plan(s) Located At:**

**5. Prepared by:** Name: Don Fortier      Position/Title: SOFR      Signature: \_\_\_\_\_

ICS 208      IAP Page \_\_\_\_\_      Date/Time: 7/15/2021 1400

<b>MEDICAL PLAN</b>	1. Incident Name	2. Date Prepared	3. Time Prepared	4. Operational Period					
	Lyle Hill Fire	July 14, 2021	1700	0600 - 1800					
<b>5. Incident Medical Aid Station</b>									
Medical Aid Stations		Location			Paramedics				
No Aid Station					Yes	No			
<b>6. Transportation</b>									
<b>A. Ambulance Services</b>									
Name		Address		Phone		Paramedics			
Klickitat Co. EMS		Dallesport WA		911		x			
Klickitat Co. EMS		White Salmon WA		911		X			
Lifeflight Network (Air)		Dallesport WA		800-452-7434		X			
Airlift Northwest Yakima (Air)		Yakima, Pasco, East Wenatchee WA		800-426-2430		X			
<b>B. Incident Ambulances</b>									
Name		Location			Paramedics				
Ballard Ambulance		Fire Line Mike Battis Cell (509) 670 7744			X				
<b>7. Hospitals</b>									
Name		Address		Travel Time		Helipad		Burn Center	
				Air	Ground	Yes	No	Yes	No
Skyline Hospital		211 Skyline Dr, Wh. Salmon, WA 98672 (509) 493-1101		10 Min.	15 Min	509-493-1101	X		X
Mid-Columbia Medical Center		1700 E 19 <sup>th</sup> St The Dalles OR 97058 (541) 296-1111		10 min.	30 min	509-733-4022	X		X
Harborview Medical Center		325 9 <sup>th</sup> Ave, Seattle, WA 98104 (206) 744-3000 N47 36.1 W122 19.3				206-744-3000 206-744-4074 ER	X		X
Legacy Emanuel Medical Center		2801 Gentenbein, Portland, OR N45.34 W122 40.16				503-413-2200 503-413-4121 ER	x		X
<b>8. Medical Emergency Procedures</b>									
<p>Identify crew EMTs on the line in each Division Prior to engaging. In Case of urgent situation, notify your supervisor and follow the <b>MEDICAL INCIDENT REPORT "9-Line"</b> procedure on pages 118-119 in the 2018 IRPG. Notify operations of needs and location on command channel. Operations will notify CWICC and ICP. Minimize radio traffic and maintain situation awareness.</p>									
Prepared by (Medical Unit Leader)					10. Reviewed by (Safety Officer)				
					Don Fortier				

## Finance Message

- ✓ Turn in the pink and blue copies of your Shift Tickets daily!
- ✓ DIVS or above signature is required on all tickets.
- ✓ Include the names of your entire crew.
- ✓ Always notify Plans and Finance if you have a personnel swap.

### DOZER EXAMPLE

EMERGENCY EQUIPMENT SHIFT TICKET				E-16
NOTE: The responsible Government Officer will update this form each day or shift and make initial and final equipment inspections.				
1. AGREEMENT NUMBER AG-04HI-B-16-7321		2. CONTRACTOR (name) Fire Ready Services, Inc.		
3. INCIDENT OR PROJECT NAME Flaming Arrow		4. INCIDENT NUMBER WA-008-000072		
5. EQUIPMENT MAKE John Deere		7. EQUIPMENT MODEL 650KXLT		
6. SERIAL NUMBER 237642		8. OPERATOR (name) John Steel		
9. DATE MO DAY YR 8 24 17		10. OPERATOR FURNISHED BY <input checked="" type="checkbox"/> CONTRACTOR <input type="checkbox"/> GOVERNMENT		
11. EQUIPMENT USE HOURS/DAYS/MILES (work only) SPECIAL 13 DIV "W"		11. OPERATING SUPPLIES FURNISHED BY <input checked="" type="checkbox"/> CONTRACTOR (fuel) <input type="checkbox"/> GOVERNMENT (oil)		
START STOP 0600 1900		14. REMARKS (reference down time and cause, problems, etc.) Transport returned by Incident Transport driver: Ted Eiser 125631 - 125703 = 72 miles		

### ENGINE EXAMPLE

EMERGENCY EQUIPMENT SHIFT TICKET				E-48
NOTE: The responsible Government Officer will update this form each day or shift and make initial and final equipment inspections.				
1. AGREEMENT NUMBER AG-04HI-B-15-7323		2. CONTRACTOR (name) Interne Fighters		
3. INCIDENT OR PROJECT NAME Devils Gulch		4. INCIDENT NUMBER WA-SE'S 000135		
5. EQUIPMENT MAKE Dodge		7. EQUIPMENT MODEL 3500		
6. SERIAL NUMBER 170412		8. OPERATOR (name) Matt Steak		
9. DATE MO DAY YR 9 5 17		10. OPERATOR FURNISHED BY <input checked="" type="checkbox"/> CONTRACTOR <input type="checkbox"/> GOVERNMENT		
11. EQUIPMENT USE HOURS/DAYS/MILES (work only) SPECIAL 1 bay 1/2 Hr lunch taken Map up DIV'S		11. OPERATING SUPPLIES FURNISHED BY <input checked="" type="checkbox"/> CONTRACTOR (fuel) <input type="checkbox"/> GOVERNMENT (oil)		
START STOP 0600 2000		14. REMARKS (reference down time and cause, problems, etc.) Crew: Ida Pulaski Tim Burr		
		15. EQUIPMENT STATUS <input checked="" type="checkbox"/> a. Inspected and under agreement <input type="checkbox"/> b. Released by Government <input type="checkbox"/> c. Withdrawn by Contractor		
		16. INVOICE POSTED BY (Recorder's initials)		
17. CONTRACTOR'S OR AUTHORIZED AGENT'S SIGNATURE Matt Steak		18. GOVERNMENT OFFICER'S SIGNATURE Division Supervisor		19. DATE SIGNED 9-6-17





**Lyle Hill Fire**

**Lyle, WA**

**July 14, 2021**

**PIO Cole Massey**

<p style="text-align: center;"><b><u>PIO Ben Shearer</u></b></p> <p>Phone: <b>509-761-4858</b> Email: <b>sewaimtpio@gmail.com</b></p>	<p style="text-align: center;"><b><u>PUBLIC INFORMATION LINE</u></b></p> <p style="text-align: center;"><b><u>509-761-4858</u></b></p> <p style="text-align: center;"><b><u>FACEBOOK</u></b> <b><u>SEWAIMT</u></b></p>
---	--

**We are requesting pictures of the fire line activity.  
Please identify people and agencies so they can get credit.**

**Before posting pictures to your accounts:**

When your taking pictures, please make sure that the following things are in place:

Any photos of fire line work must have proper PPE in place.

Make sure the activity you are capturing is what you want the public to see! You might want the picture of your crew eating lunch. Please think twice before you post it on your account.

**PLEASE DO NOT TAKE PICTURES THAT INCLUDE THE PUBLIC.**

Be aware of any media in your work area. The camera and mic are ALWAYS on.

If you see un-escorted media out near the fire area, please call and verify we know they are there. We will contact Division Supervisors before sending media to the fire area. There are no road closures, so they have the right to access public roads.

Please email pictures, or you can text my number 509-761-4858

Refer the public to our SEWAIMT page or 509-761-4858.

# Klickitat County Map

Customize a Subtitle Here



## Legend

County Boundary

Towns (Points)



City Limits



Roads

- City
- County
- Other Govt
- Private
- State

Parcels



100 ft



Created by Klickitat County, Oregon County, professional liability, and/or other services, as to the accuracy, reliability, or completeness of its data.

<b>FEMA ICS FORM 205A INCIDENT TELEPHONE COMMUNICATION PLAN</b>				<b>1. Incident Name</b> Lyle Hill Fire		<b>2. Operational Period</b> 07-14-2021 0600-1800	
<b>3. Contact List</b>							
<b>Incident Facilities/Contacts</b>				<b>Facility Address</b>		<b>Phone Num</b>	
Lyle School/Robert Allen				625 Keasey Ave Lyle WA 98635		509-250-1634	
Lyle School/Jen Machado				625 Keasey Ave Lyle WA 98635		509-310-9702	
Fire Camp phone						360-259-2495	
<b>Section &amp; Position</b>		<b>STATE</b>	<b>F E M A</b>	<b>O F A</b>	<b>Name</b>	<b>Email</b>	<b>Cell Phone No.</b>
<b>Command Staff</b>							
IMO IC		X			Leonard Johnson		360-581-9672
IMO Liaison Officer		X					
IMO PIO		X			Ben Shearer		509-492-1461
IMO Safety Officer		X			Don Fortier	<a href="mailto:Dfortier3001@gmail.com">Dfortier3001@gmail.com</a>	509-797-5007
<b>Operations Section</b>							
IMO Operations Chief		X			Wes Long	chief@kcf3.com	360-281-9585
IMO Dep. Operations		X					
IMO Night Division Supervisor		X			Victor Leatzow		360-957-1158
IMO Alpha Division Supervisor		X			Paul Kimball		509-863-5133
IMO Zulu Division Supervisor		X			Aaron Bibe		509-591-8620
<b>Planning Section</b>							
IMO Planning Chief		X			Ryan Scharnhorst	ryan.scharnhorst@pullman-wa.gov	509-432-1016
IMO Resource Unit Leader		X			Brian Dodge	bdodge@pugetsoundfire.org	360-870-6700
<b>Finance/Admin Section</b>							
IMO Finance Section Chief		X			Robert Thompson	Bt99353@gmail.com	509-531-4842
IMO Personnel Time Recorder		X			Lisa Egtvedt	Lisa.egevedt@dnr.wa.gov	360-333-5769
		X					
<b>Logistics Section</b>							
IMO Logistics Chief		X			Josh Ambrose	j.ambrose@ghfd2.net	360-310-0401
IMO Deputy Logistics Chief		X					
IMO Ordering Manager		X					
		X					
<b>4. Prepared by</b>				<b>Date</b>		<b>5. Reviewed by</b>	
Jennifer Norton SCKN (t) 7-14-21						<b>Date</b>	



# MEDICAL PLAN (ICS 206 WF)

Controlled Unclassified Information//Basic

## Medical Incident Report

**FOR A NON-EMERGENCY INCIDENT, WORK THROUGH CHAIN OF COMMAND TO REPORT AND TRANSPORT INJURED PERSONNEL AS NECESSARY.**

**FOR A MEDICAL EMERGENCY: IDENTIFY ON SCENE INCIDENT COMMANDER BY NAME AND POSITION AND ANNOUNCE "MEDICAL EMERGENCY" TO INITIATE RESPONSE FROM IMT COMMUNICATIONS/DISPATCH.**

*Use the following items to communicate situation to communications/dispatch.*

**1. CONTACT COMMUNICATIONS / DISPATCH** (Verify correct frequency prior to starting report)

*Ex: "Communications, Div. Alpha. Stand-by for Emergency Traffic."*

**2. INCIDENT STATUS:** Provide incident summary (including number of patients) and command structure.

*Ex: "Communications, I have a Red priority patient, unconscious, struck by a falling tree. Requesting air ambulance to Forest Road 1 at (Lat./Long.) This will be the Trout Meadow Medical, IC is TFLD Jones. EMT Smith is providing medical care."*

Severity of Emergency / Transport Priority	<input type="checkbox"/> <b>RED / PRIORITY 1</b> Life or limb threatening injury or illness. Evacuation need is <b>IMMEDIATE</b> <i>Ex: Unconscious, difficulty breathing, bleeding severely, 2<sup>o</sup> - 3<sup>o</sup> burns more than 4 palm sizes, heat stroke, disoriented.</i> <input type="checkbox"/> <b>YELLOW / PRIORITY 2</b> Serious injury or illness. Evacuation may be <b>DELAYED</b> if necessary. <i>Ex: Significant trauma, unable to walk, 2<sup>o</sup> - 3<sup>o</sup> burns not more than 1-3 palm sizes.</i> <input type="checkbox"/> <b>GREEN / PRIORITY 3</b> Minor injury or illness. Non-Emergency transport <i>Ex: Sprains, strains, minor heat-related illness.</i>	
Nature of Injury or Illness & Mechanism of Injury		Brief Summary of Injury or Illness <i>(Ex: Unconscious, Struck by Falling Tree)</i>
Transport Request		Air Ambulance / Short Haul/Hoist Ground Ambulance / Other
Patient Location		Descriptive Location & Lat. / Long. (WGS84)
Incident Name		Geographic Name + "Medical" <i>(Ex: Trout Meadow Medical)</i>
On-Scene Incident Commander		Name of on-scene IC of Incident within an Incident <i>(Ex: TFLD Jones)</i>
Patient Care		Name of Care Provider <i>(Ex: EMT Smith)</i>

**3. INITIAL PATIENT ASSESSMENT:** Complete this section for each patient as applicable (start with the most severe patient)

Patient Assessment: See IRPG page 106

Treatment:

**4. TRANSPORT PLAN:**

Evacuation Location (if different): (Descriptive Location (drop point, intersection, etc.) or Lat. / Long.) Patient's ETA to Evacuation Location:

Helispot / Extraction Site Size and Hazards:

**5. ADDITIONAL RESOURCES / EQUIPMENT NEEDS:**

*Example: Paramedic/EMT, Crews, Immobilization Devices, AED, Oxygen, Trauma Bag, IV/Fluid(s), Splints, Rope rescue, Wheeled litter, HAZMAT, Extrication*

**6. COMMUNICATIONS:** Identify State Air/Ground EMS Frequencies and Hospital Contacts as applicable

Function	Channel Name/Number	Receive (RX)	Tone/NAC *	Transmit (TX)	Tone/NAC *
COMMAND					
AIR-TO-GRND					
TACTICAL					

**7. CONTINGENCY:** Considerations: If primary options fail, what actions can be implemented in conjunction with primary evacuation method? Be thinking ahead.

**8. ADDITIONAL INFORMATION:** Updates/Changes, etc.

**REMEMBER:** Confirm ETA's of resources ordered. Act according to your level of training. Be Alert. Keep Calm. Think Clearly. Act Decisively.