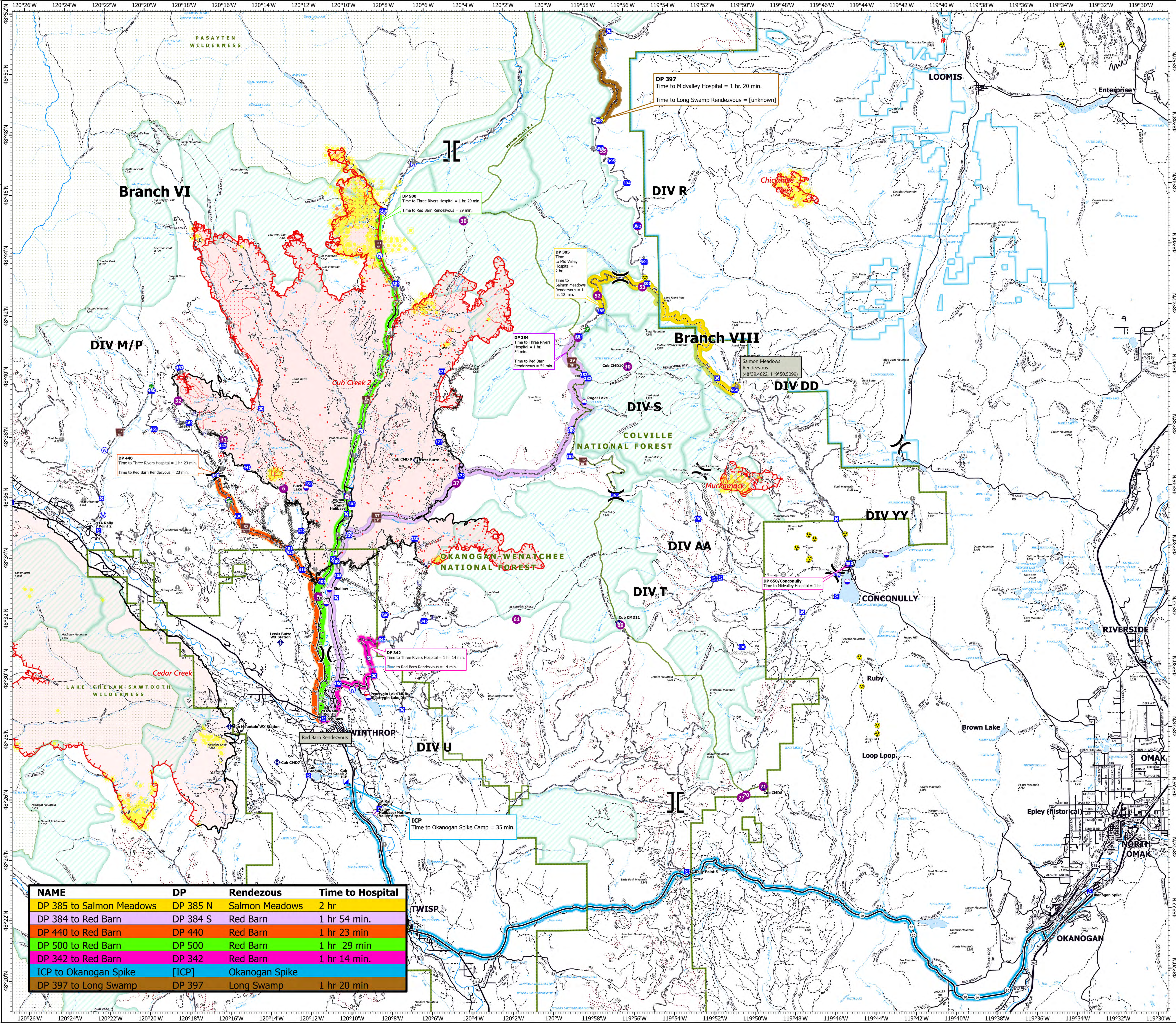


MEDICAL EVACUATION

8/9/2021
 Cub Creek 2
 WA-NES-373
 62,368 acres on 8/6/2021, 1600 hrs
 Muckamuck
 WA-COF-2290
 989 acres on 8/8/2021, 1916 hrs

Medical Evacuation Routes

- DP 342
- DP 384 S
- DP 385 N
- DP 440
- DP 500
- DP 397
- [ICP]
- Pump
- Water Tank
- Airstrip or Airport
- Dip Site
- Mobile Retardant Base
- Helispot
- Helibase
- () Division Break
- || Branch Break
- Incident Command Post
- Drop Point
- Closure
- Camp
- Staging Area
- Lookout
- Hot Spot - Spot Fire
- Value at Risk
- Landmark
- Gate
- Water Development or Draft Site
- Mobile Weather Unit
- Repeater
- Hazard
- Water Source
- Completed Dozer Line
- Completed Fuel Break
- Completed Hand Line
- Completed Mixed Construction Line
- Planned Dozer Line
- Planned Hand Line
- Planned Road as Line
- Fire Edge
- Contained Line
- Wildfire Daily Fire Perimeter
- IR Isolated Heat Source
- IR Intense Heat
- IR Scattered Heat
- Gap; Summit
- FS Wilderness Boundary
- Roadless Area
- Ranger District Boundary
- Highway
- Paved Road
- Gravel Road
- Dirt Road
- Closed Road
- Trail
- Railroad
- 0 to 6 hours
- 6 to 12 hours
- 12 to 24 hours
- 24 to 48 hours
- over 48 hours
- 0 to 6 hours
- 6 to 12 hours
- 12 to 24 hours
- 24 to 48 hours
- over 48 hours



NAME	DP	Rendezvous	Time to Hospital
DP 385 to Salmon Meadows	DP 385 N	Salmon Meadows	2 hr
DP 384 to Red Barn	DP 384 S	Red Barn	1 hr 54 min.
DP 440 to Red Barn	DP 440	Red Barn	1 hr 23 min
DP 500 to Red Barn	DP 500	Red Barn	1 hr 29 min
DP 342 to Red Barn	DP 342	Red Barn	1 hr 14 min.
ICP to Okanogan Spike	[ICP]	Okanogan Spike	
DP 397 to Long Swamp	DP 397	Long Swamp	1 hr 20 min

