

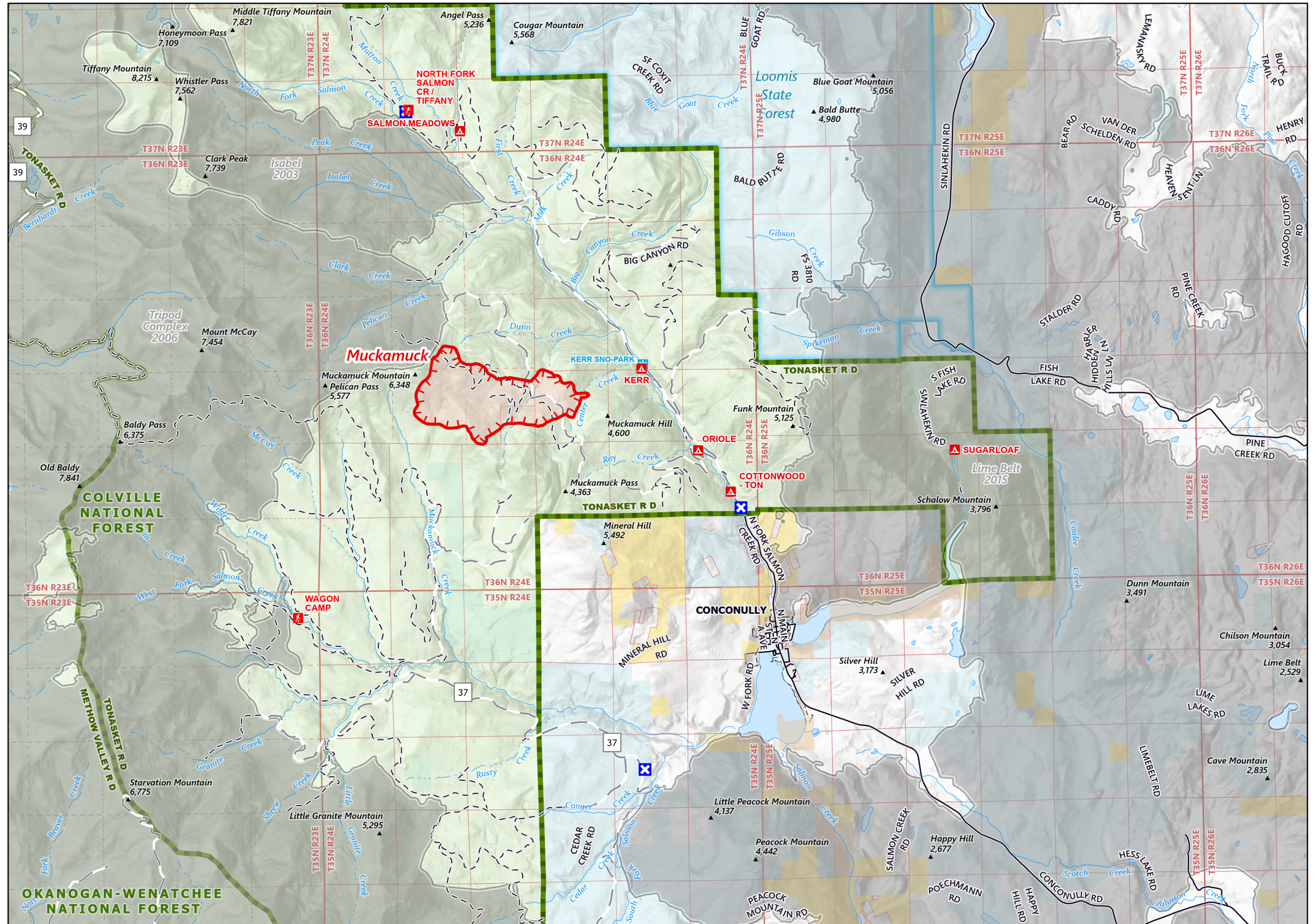
PUBLIC INFORMATION

8/9/2021

Muckamuck
WA-COF-2290

989 acres at 8/8/2021, 1916 hrs

- Wildfire Daily Fire Perimeter
- Campground
- Group Campground
- Trailhead
- Visitor Center
- Picnic Site
- Group Picnic Site
- Boating Site
- Interpretive Site
- Ski Area Alpine
- Ski Area Nordic
- Snowpark
- Primary Highway
- Secondary Highway
- Paved Roads
- Interstate Not Paved
- US Route Not Paved
- Fire History (2000 - Present, 200+ acres)
- National Forest Boundary
- Ranger District Boundary
- Land Ownership**
- Bureau of Land Management
- U.S. Forest Service
- National Park Service
- U.S. Fish and Wildlife Service
- Bureau of Indian Affairs
- Other Federal
- State
- Local Government
- Loomis State Forest Boundary



Miles
0 0.25 0.5
Kilometers
0 0.25 0.5

1:85,197 - 8/9/2021 0951
Acres from IR and GIS
North American 1983 Datum. Lat/Long Grid