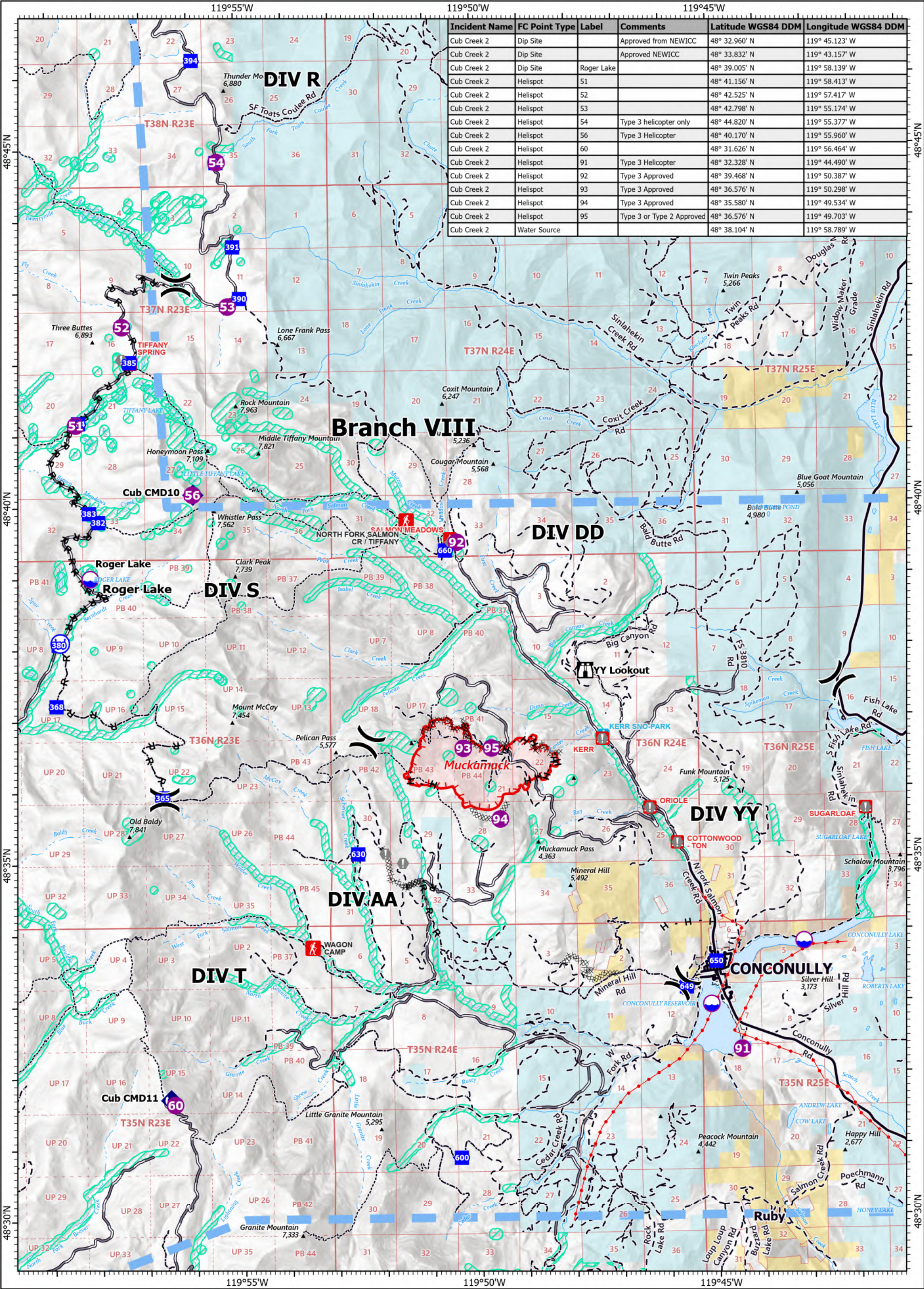


119°55'W

119°50'W

119°45'W



Incident Name	FC Point Type	Label	Comments	Latitude WGS84 DDM	Longitude WGS84 DDM
Cub Creek 2	Dip Site		Approved from NEWICC	48° 32.960' N	119° 45.123' W
Cub Creek 2	Dip Site		Approved NEWICC	48° 33.832' N	119° 43.157' W
Cub Creek 2	Dip Site	Roger Lake		48° 39.005' N	119° 58.139' W
Cub Creek 2	Helispot	51		48° 41.156' N	119° 58.413' W
Cub Creek 2	Helispot	52		48° 42.525' N	119° 57.417' W
Cub Creek 2	Helispot	53		48° 42.798' N	119° 55.174' W
Cub Creek 2	Helispot	54	Type 3 helicopter only	48° 44.820' N	119° 55.377' W
Cub Creek 2	Helispot	56	Type 3 Helicopter	48° 40.170' N	119° 55.960' W
Cub Creek 2	Helispot	60		48° 31.626' N	119° 56.464' W
Cub Creek 2	Helispot	91	Type 3 Helicopter	48° 32.328' N	119° 44.490' W
Cub Creek 2	Helispot	92	Type 3 Approved	48° 39.468' N	119° 50.387' W
Cub Creek 2	Helispot	93	Type 3 Approved	48° 36.576' N	119° 50.298' W
Cub Creek 2	Helispot	94	Type 3 Approved	48° 35.580' N	119° 49.534' W
Cub Creek 2	Helispot	95	Type 3 or Type 2 Approved	48° 36.576' N	119° 49.703' W
Cub Creek 2	Water Source			48° 38.104' N	119° 58.789' W

PILOT
 Muckamuck
 WA-COF-2290
 8/12/2021
 1,237 acres at 8/9/2021, 1300 hrs
 1:90,000 - SWAIMT2 GIS - 8/11/2021 2254
 Acres from IR and GIS
 North American 1983 Datum. Lat/Long Grid

- Dip Site
- Helispot
- Division Break
- Drop Point
- Lookout
- Value at Risk
- Repeater
- Water Source
- Completed Dozer Line
- Completed Hand Line
- Completed Road as Line
- Other
- Temporary Flight Restriction
- Fire Edge
- Campground
- Trailhead
- Snowpark
- Trail
- Paved Road
- Gravel Road
- Dirt Road
- Retardant Avoidance
- Wildfire Daily Fire Perimeter
- Bureau of Land Management
- Other Federal
- State

Nautical Miles

 Kilometers