

# OPS MAP

Muckamuck Fire  
WA-COF-2290  
09/08/2021

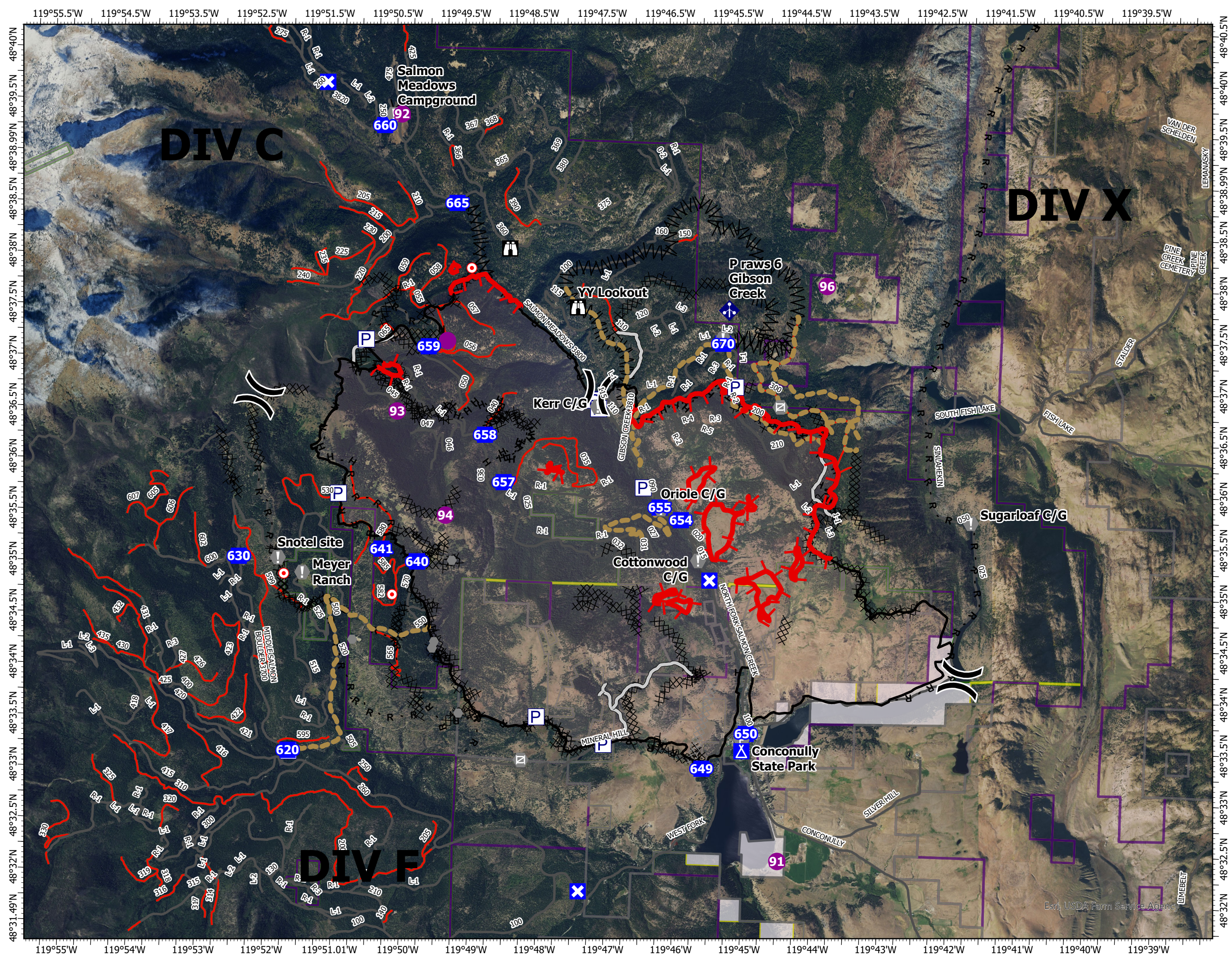
13337 acres at 08/30/2021

0 0.250.5 1 Miles

- Helispot
- Division Break
- Drop Point
- Closure
- Camp
- Lookout
- Hot Spot - Spot Fire
- Value at Risk
- Other
- Gate
- Fire Station
- Mobile Weather Unit
- Pump
- Completed Dozer Line
- Completed Fuel Break
- Completed Hand Line
- Completed Road as Line
- Planned Dozer Line
- Access or Improved Road
- Other
- Road Repair
- Fire Edge
- Contained Line
- 1 - BASIC CUSTODIAL CARE (CLOSED)
- 2 - HIGH CLEARANCE VEHICLES
- 3 - SUITABLE FOR PASSENGER CARS
- 4 - MODERATE DEGREE OF USER COMFORT
- <Null>
- U.S. Forest Service
- Bureau of Land Management
- Other Federal Land
- State Land
- Other Land, Including Private
- Red: Red
- Green: Green
- Blue: Blue



9/7/2021 2129  
Transitioned Team  
North American 1983 Datum.



Esri, USDA Farm Service Agency