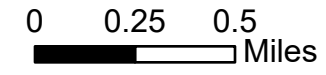


Briefing Map

Schneider Springs
WAOWF000453
8/9/2021 Division Map

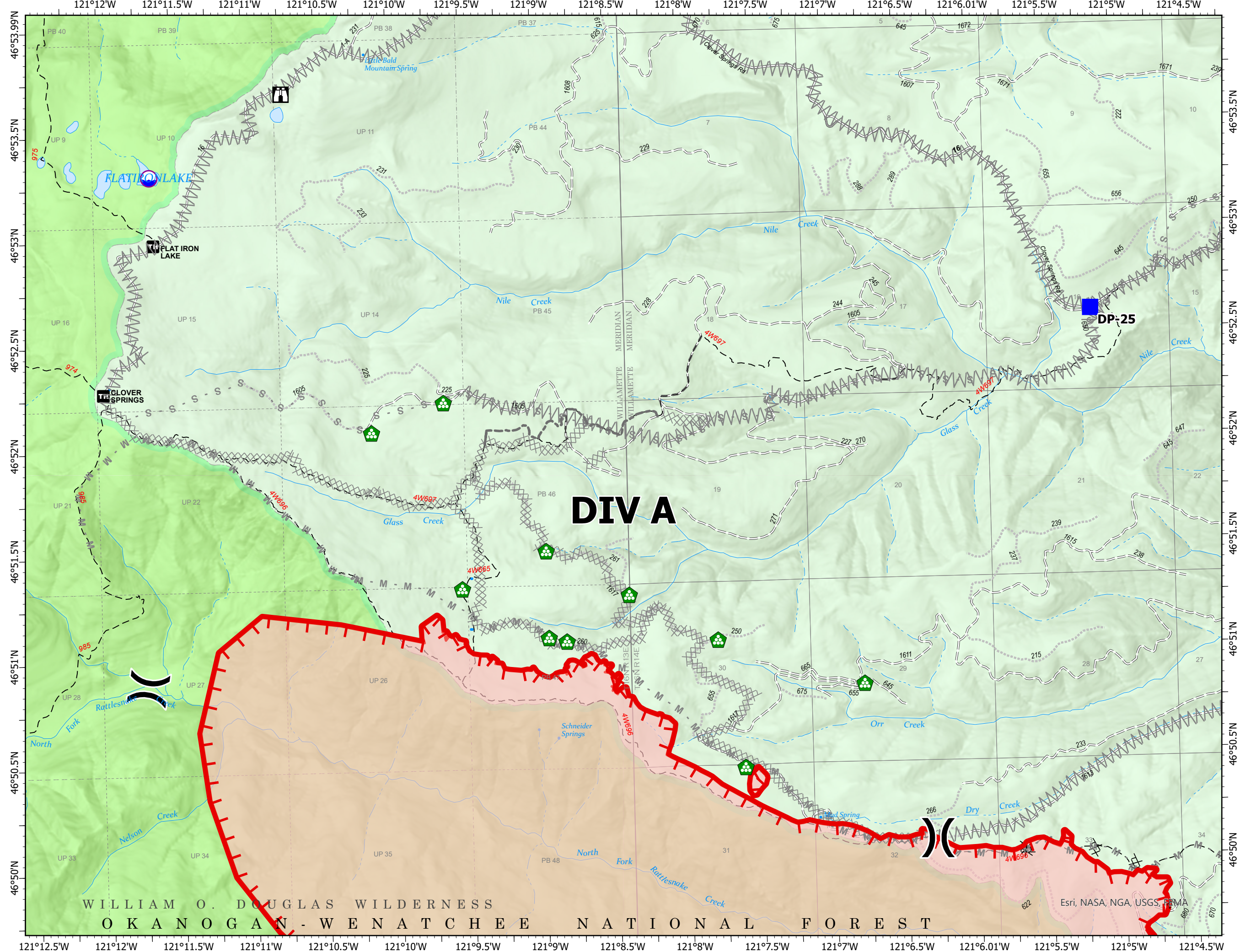
4220 acres at 08/09/2021



- Dip Site
- Division Break
- Drop Point
- Lookout
- Landing or Log Deck
- Wildfire Daily Fire Perimeter
- Label Point
- Completed Dozer Line
- Planned Dozer Line
- Planned Fuel Break
- Planned Mixed Construction Line
- Planned Secondary Line
- Other
- Fire Edge
- Administrative FS Boundary
- FS Wilderness Boundary



Steven LaVal, GISS Eastern Area
Silver IMT 8-9-2021 2100
8/10/2021 2128
Acres from IR and GPS

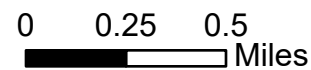


Esri, NASA, NGA, USGS, FEMA

Briefing Map

Schneider Springs
WAOWF000453
8/9/2021 Division Map

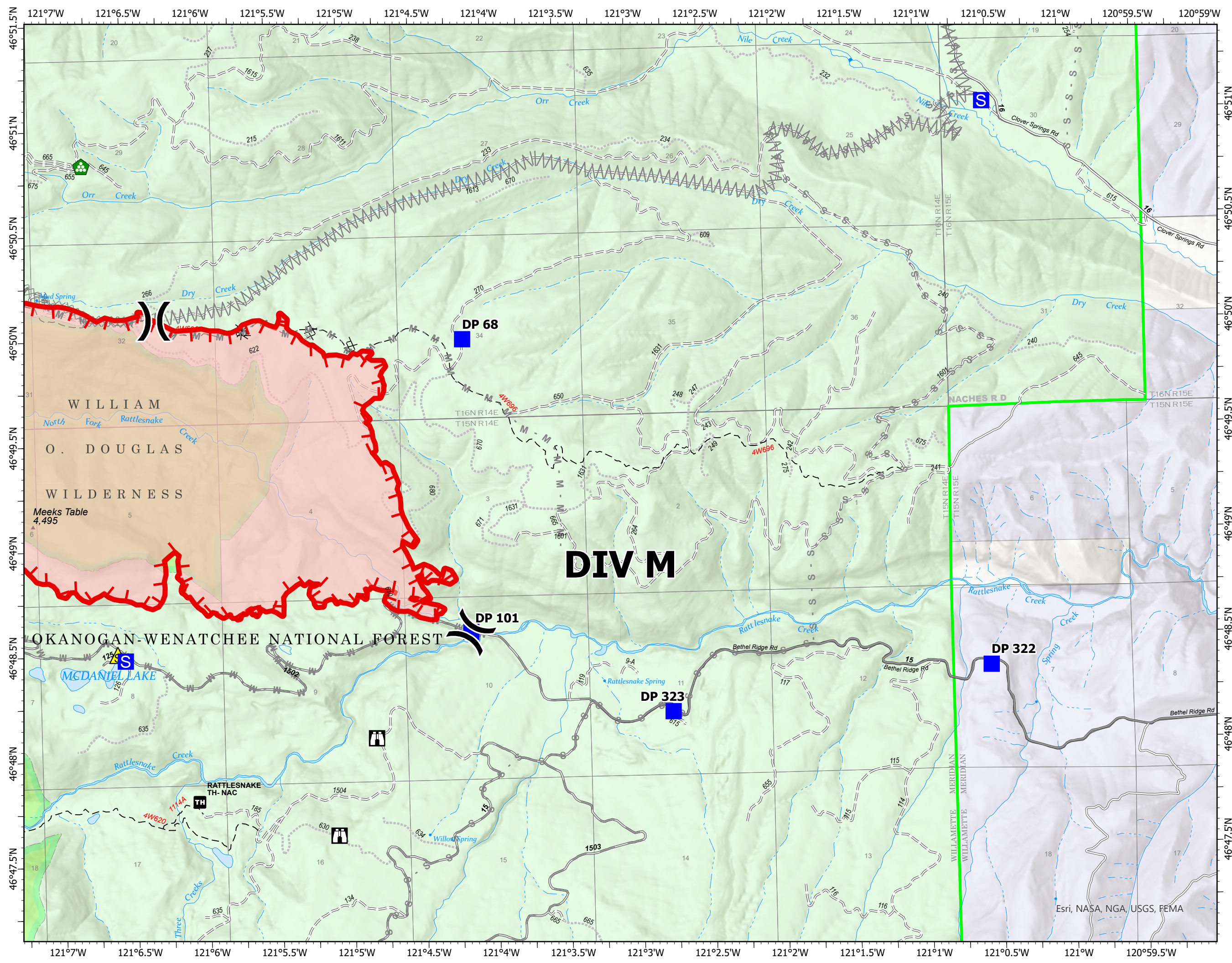
4220 acres at 08/09/2021



- (X) Division Break
- Drop Point
- S Staging Area
- 🏠 Lookout
- 🏠 Landing or Log Deck
- ⚠ Safety Zone
- 🔴 Wildfire Daily Fire Perimeter
- Label Point
- ⚡ Completed Dozer Line
- ⚡ Planned Dozer Line
- ⚡ Planned Fuel Break
- M - Planned Mixed Construction Line
- S - Planned Secondary Line
- 🔴 Fire Edge
- 🟢 Administrative FS Boundary
- 🟢 FS Wilderness Boundary



Steven LaVal, GISS Eastern Area
Silver IMT 8-9-2021 2100
8/10/2021 2128
Acres from IR and GPS



Esri, NASA, NGA, USGS, FEMA

Briefing Map

Schneider Springs
WAOWF000453
8/9/2021 Division Map

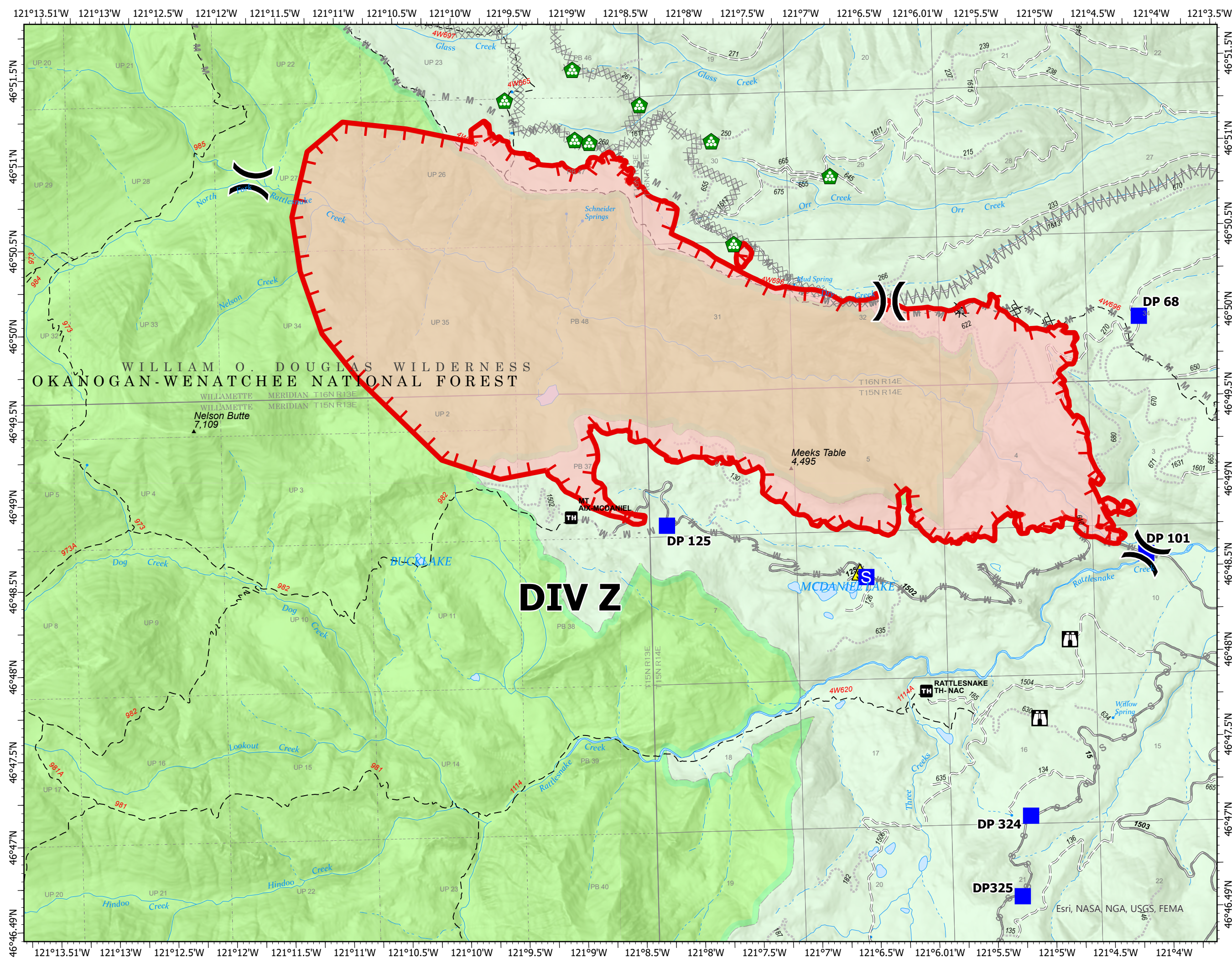
4220 acres at 08/09/2021

0 0.25 0.5
Miles

- (X) Division Break
- Drop Point
- S Staging Area
- 🏠 Lookout
- 🌲 Landing or Log Deck
- ⚠️ Safety Zone
- 🔴 Wildfire Daily Fire Perimeter
- Label Point
- ⌘ Completed Dozer Line
- ⌘ Planned Dozer Line
- ⌘ Planned Fuel Break
- M - Planned Mixed Construction Line
- S - Planned Secondary Line
- 🔴 Fire Edge
- 🟢 Administrative FS Boundary
- 🟢 FS Wilderness Boundary



Steven LaVal, GISS Eastern Area
Silver IMT 8-9-2021 2100
8/10/2021 2129
Acres from IR and GPS



Esri, NASA, NGA, USGS, FEMA