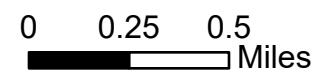


Ops Map

Schneider Springs
WA-OWF-000453

8/13/2021 Division Map

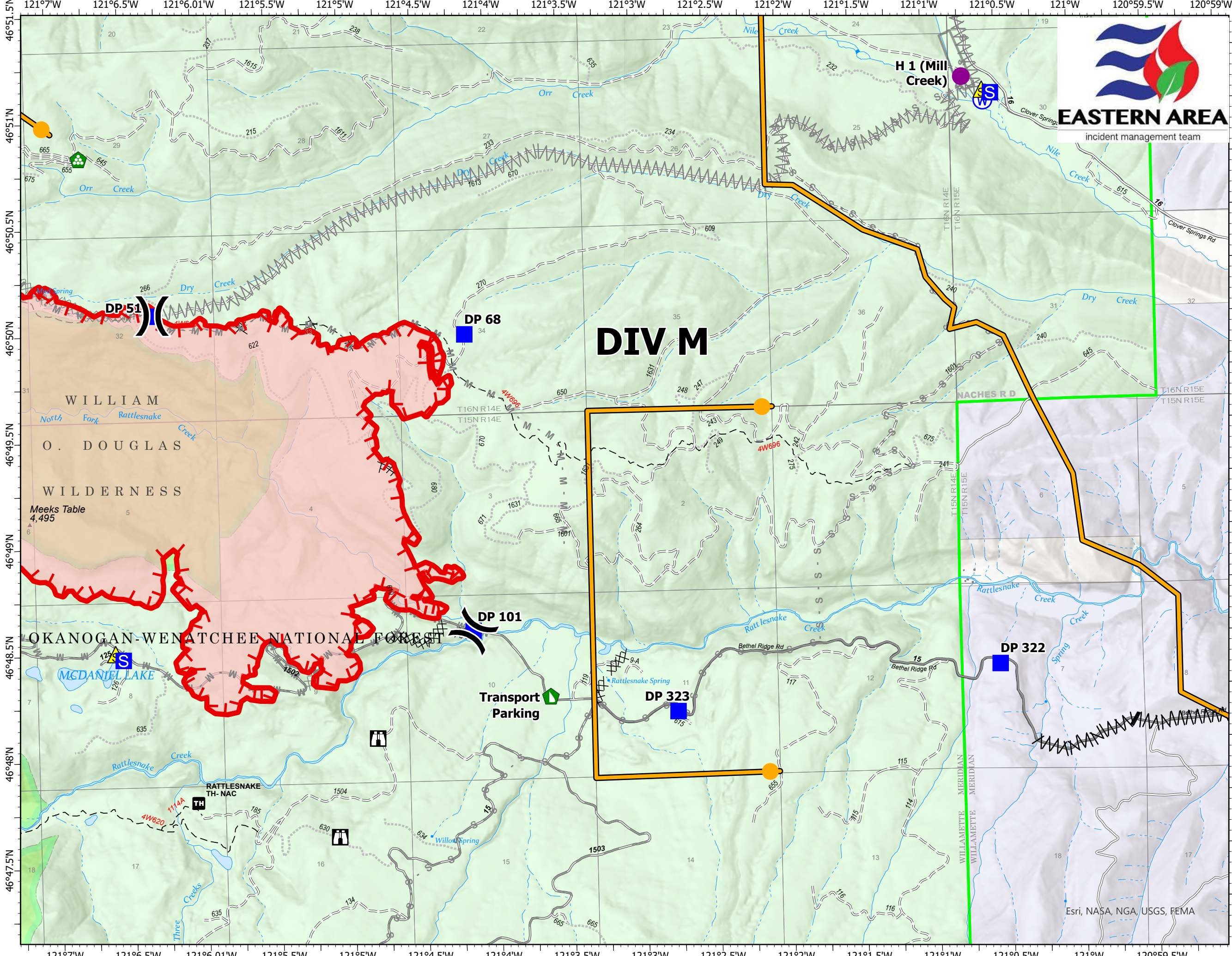
13,665 acres at 08/12/2021 18:15



- Helispot
- ⌘ Division Break
- Drop Point
- Ⓢ Staging Area
- 🏠 Lookout
- 🏠 Landing or Log Deck
- 🏠 Dozer Push
- ⚠ Safety Zone
- 🌊 Water Source
- ▭ Other
- 🔴 Wildfire Daily Fire Perimeter
- Label Point
- ⌘ Completed Dozer Line
- ⌘ Completed Fuel Break
- ⌘ Planned Dozer Line
- ⌘ Planned Fuel Break
- M - Planned Mixed Construction Line
- S - Planned Secondary Line
- Management Action Point
- 🔴 Fire Edge
- 🟢 Administrative FS Boundary
- 🟢 FS Wilderness Boundary



Steven LaVal, GISS Eastern Area
Silver IMT 8-13-2021 08:00
8/13/2021 0824
Acres from IR and GPS
North American 1983 Datum.
LatLong Grid



EASTERN AREA
incident management team

DIV M

Esri, NASA, NGA, USGS, FEMA