

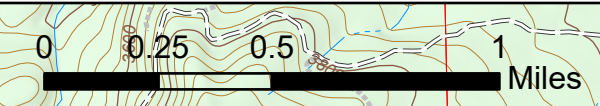
DIV D

Ops Map

Schneider Springs
WA-OWF-000453

8/15/2021 Division Map Book

16,516 acres at 08/14/2021 18:00



- Division Break
- Zone Break
- Drop Point
- Landing or Log Deck



Steven LaVal, GIS Eastern Area
Silver, MT
8/15/2021 07:18
Acres from 1R and GPS
North American 1983 Datum, LatLong
Grid

NATIONAL FOREST

WILLIAM O
DOUGLAS
WILDERNESS

DIV D

CLIFFDELL

KANER FLAT
KANER FLAT RIVERFRONT

AMERICAN RIVER

AMERICAN RIDGE

HALFWAY FLAT

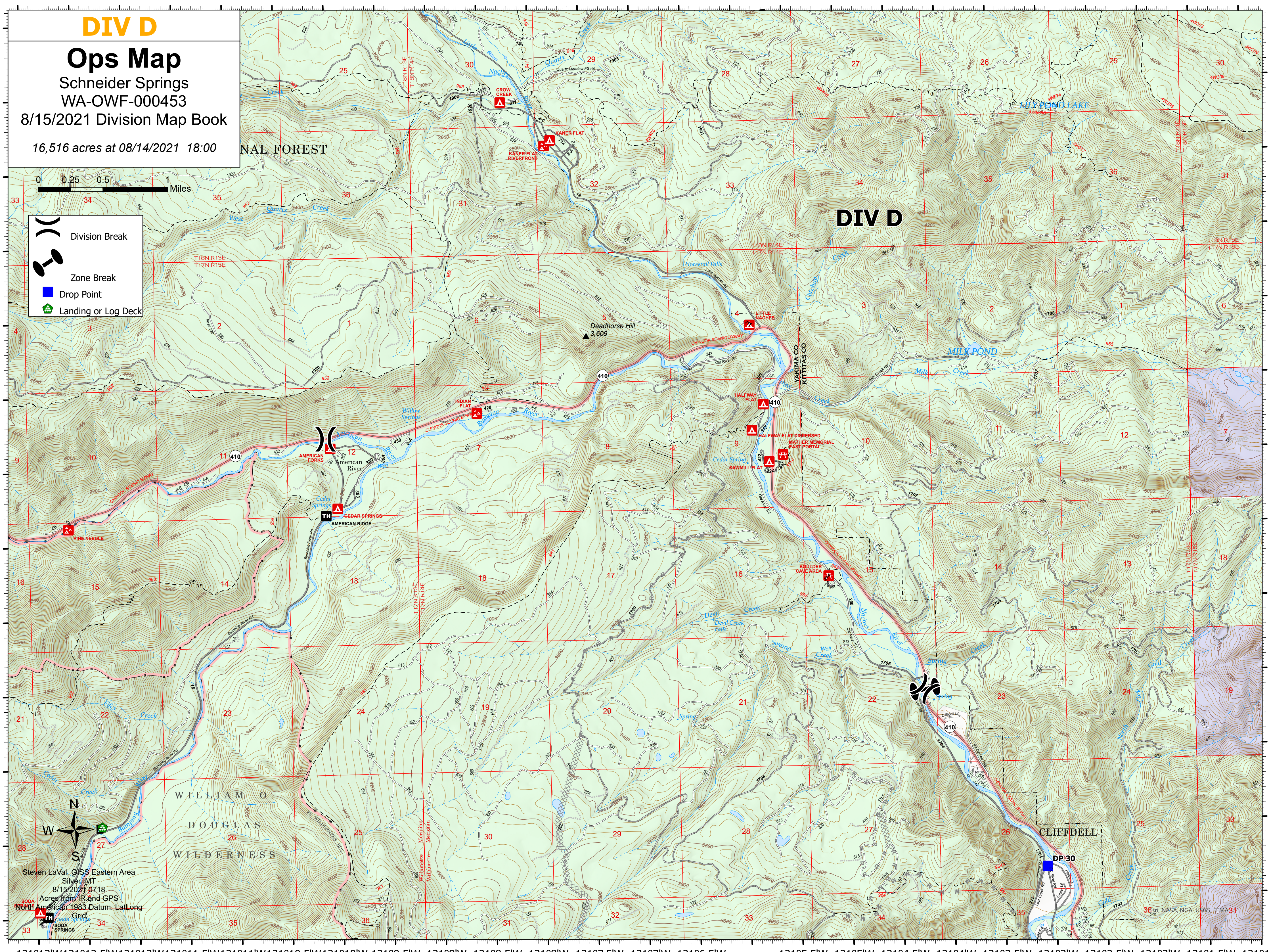
HALFWAY FLAT DISPERSED
WATHER MEMORIAL
EASTPORTAL

BOULDER DAVE AREA

Deadhorse Hill
3,609

LUX POND LAKE

MILK POND



121°13'W 121°12.5'W 121°12'W 121°11.5'W 121°11'W 121°10.5'W 121°10'W 121°9.5'W 121°9'W 121°8.5'W 121°8'W 121°7.5'W 121°7'W 121°6.5'W 121°5.5'W 121°5'W 121°4.5'W 121°4'W 121°3.5'W 121°3'W 121°2.5'W 121°2'W 121°1.5'W 121°1'W