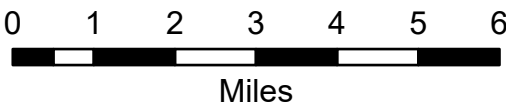


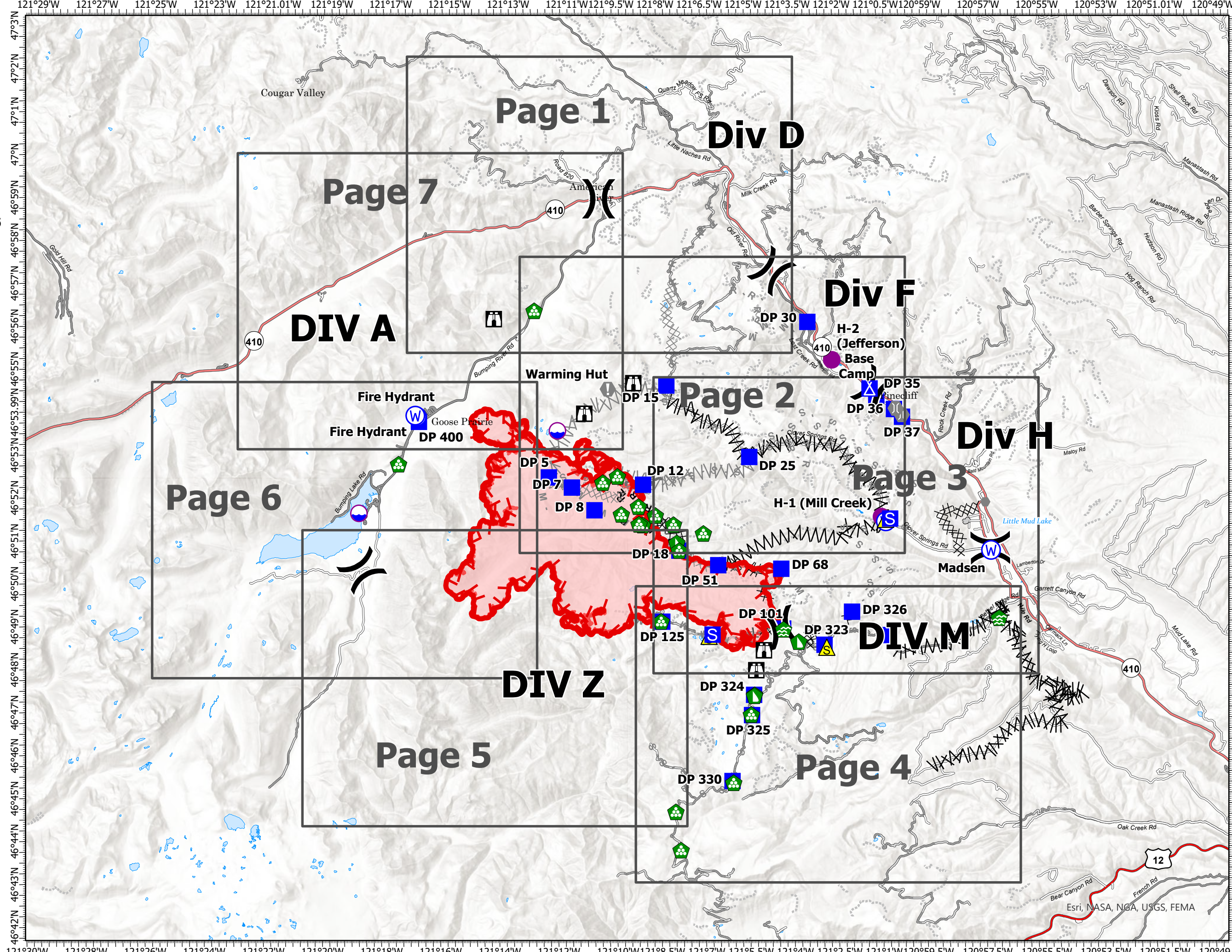
Transportation Map Index

Schneider Springs
WAOWF-000453
8/15/2021

15,042 acres at 8/13/2021



- Dip Site
- Helispot
- Helibase
- Division Break
- Drop Point
- Camp
- Staging Area
- Lookout
- Value at Risk
- Other
- Bridge
- Water Development or Draft Site
- Landing or Log Deck
- Dozer Push
- Safety Zone
- Water Source
- Completed Dozer Line
- Completed Fuel Break
- Completed Mixed Construction Line
- Completed Road as Line
- Planned Dozer Line
- Planned Fuel Break
- Planned Mixed Construction Line
- Planned Road as Line
- Planned Secondary Line
- Access or Improved Road
- Other
- Fire Edge
- Grid Index

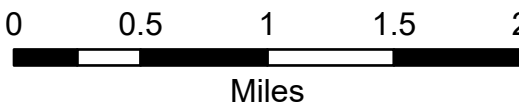


Transportation Map

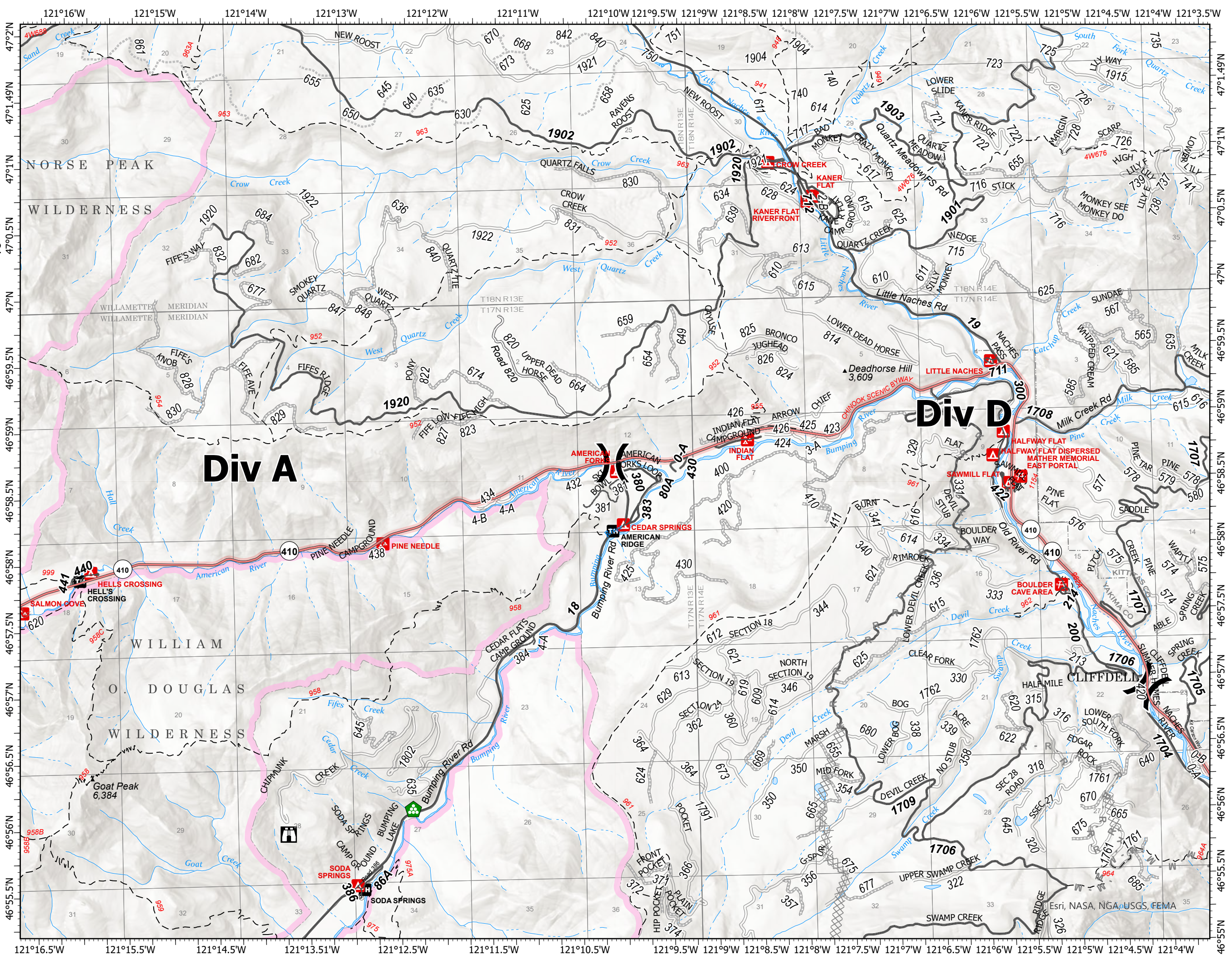
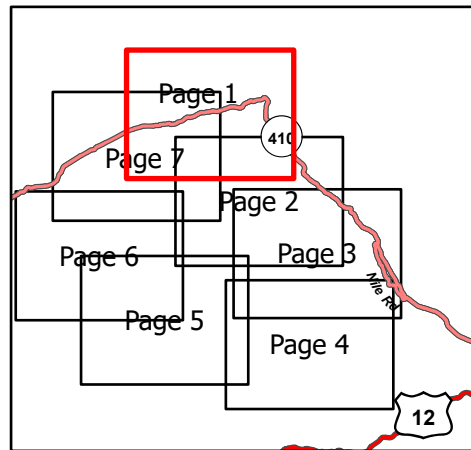
Schneider Springs
WAOWF-000453
8/15/2021

15,042 acres at 8/13/2021

Page 1 of 7



- (X) Division Break
- 🏠 Lookout
- 🏠 Landing or Log Deck
- ⌘⌘ Planned Dozer Line
- M - Planned Mixed Construction Line
- R - Planned Road as Line
- 🟩 Administrative FS Boundary
- 🟪 FS Wilderness Boundary

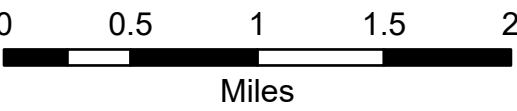


Transportation Map

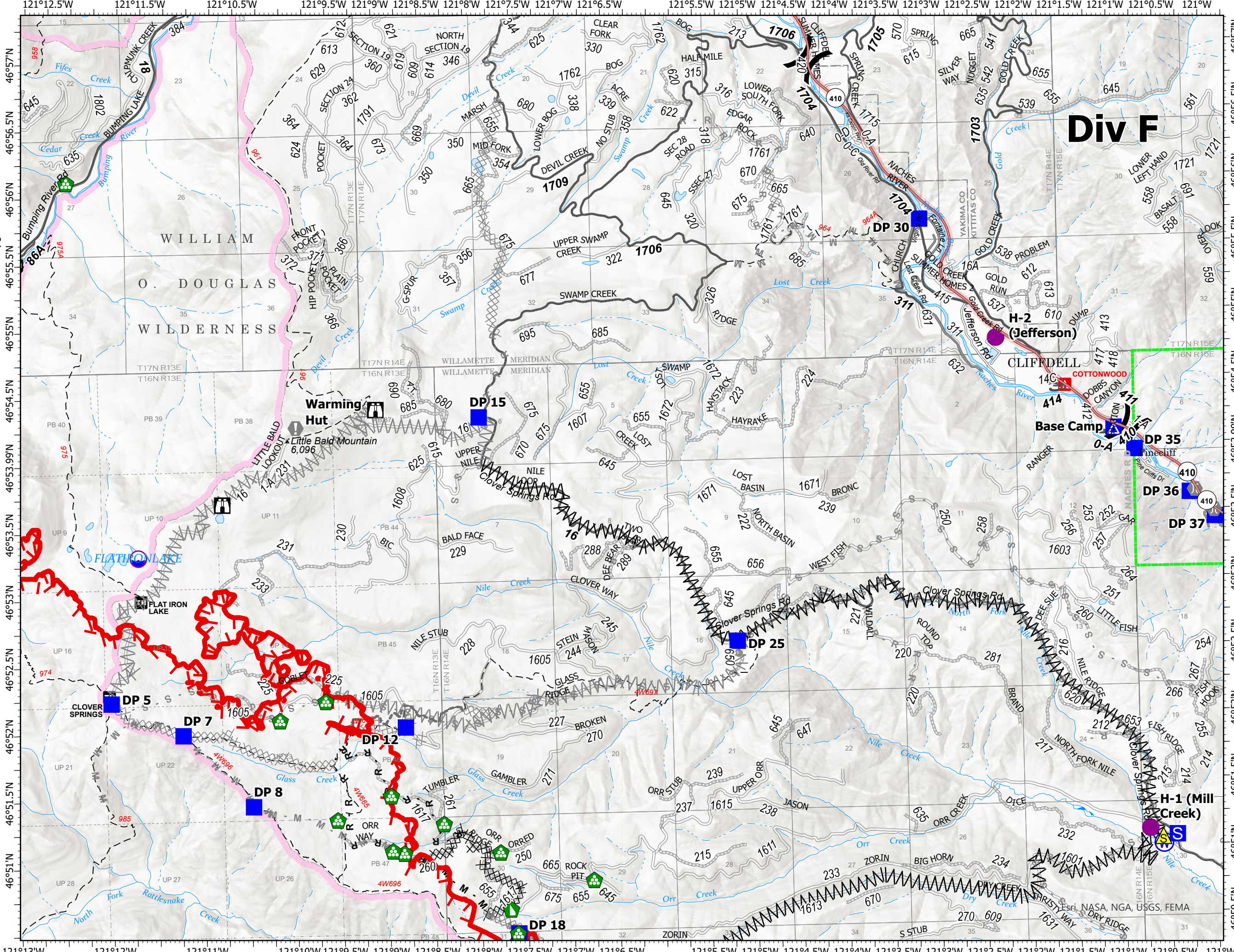
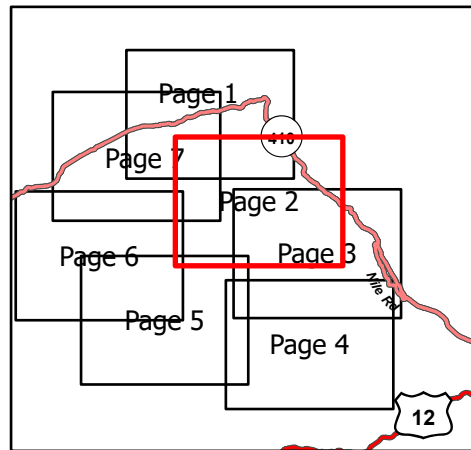
Schneider Springs
WAOWF-000453
8/15/2021

15,042 acres at 8/13/2021

Page 2 of 7



- Dip Site
- Helispot
- Division Break
- Drop Point
- Camp
- Staging Area
- Lookout
- Value at Risk
- Bridge
- Landing or Log Deck
- Dozer Push
- Safety Zone
- Water Source
- Completed Dozer Line
- Completed Fuel Break
- Completed Mixed Construction Line
- Completed Road as Line
- Planned Dozer Line
- Planned Fuel Break
- Planned Mixed Construction Line
- Planned Road as Line
- Planned Secondary Line
- Other
- Fire Edge
- Administrative FS Boundary
- FS Wilderness Boundary



Div F

Transportation Map

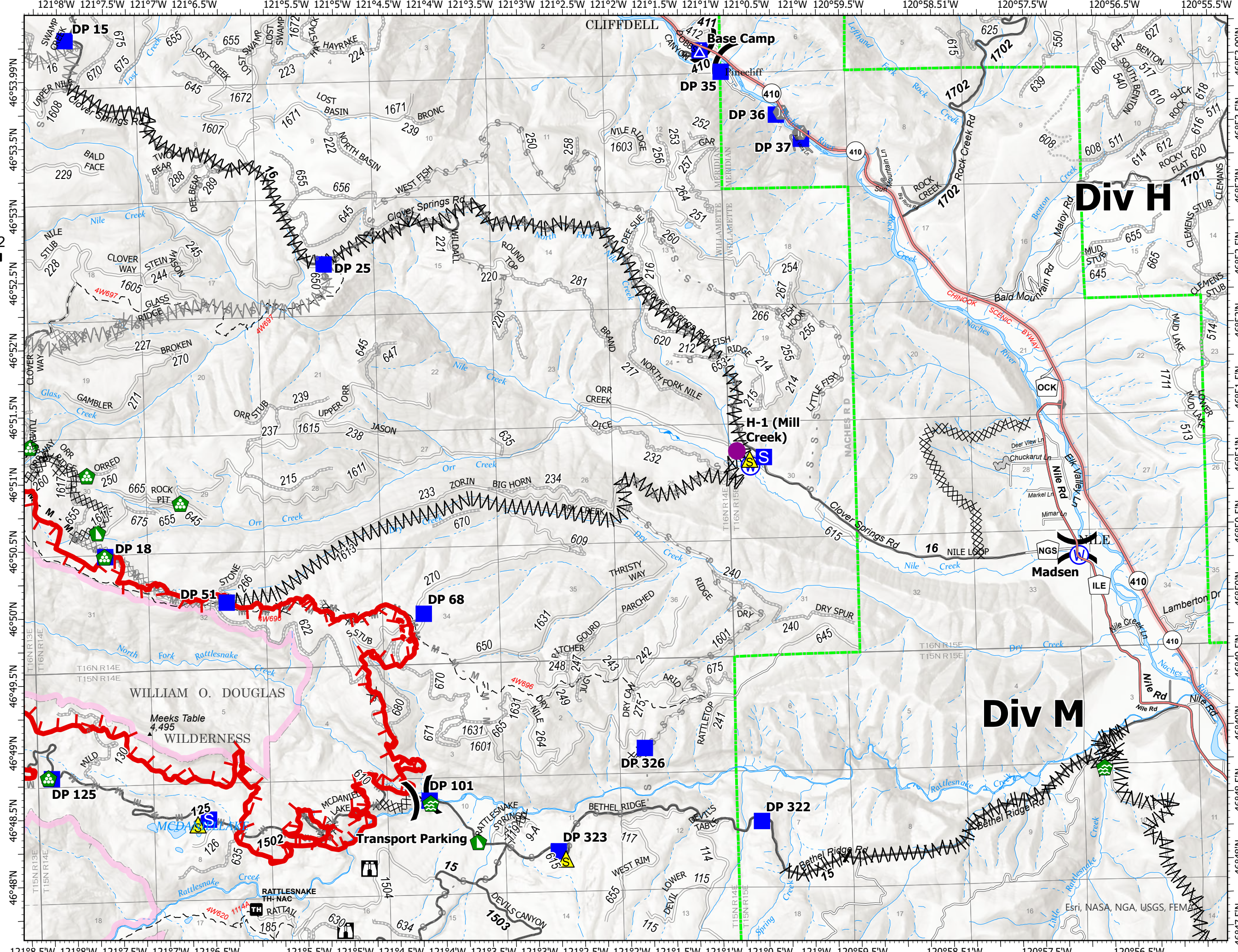
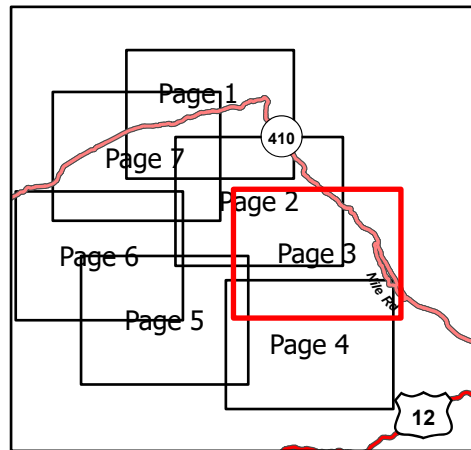
Schneider Springs
WAOWF-000453
8/15/2021

15,042 acres at 8/13/2021

Page 3 of 7



- Helispot
- ⌵ Division Break
- Drop Point
- ▲ Camp
- Staging Area
- 🔍 Lookout
- Other
- 🌉 Bridge
- 🏠 Water Development or Draft Site
- 🏠 Landing or Log Deck
- 🚧 Dozer Push
- ⚠ Safety Zone
- 💧 Water Source
- ⌵ Completed Dozer Line
- ⌵ Completed Fuel Break
- M Completed Mixed Construction Line
- R Completed Road as Line
- ⌵ Planned Dozer Line
- ⌵ Planned Fuel Break
- M Planned Mixed Construction Line
- R Planned Road as Line
- S Planned Secondary Line
- Access or Improved Road
- Other
- 🔴 Fire Edge
- 🟢 Administrative FS Boundary
- 🟡 FS Wilderness Boundary

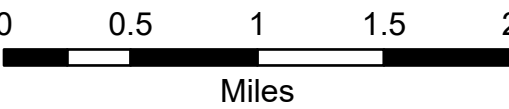


Transportation Map

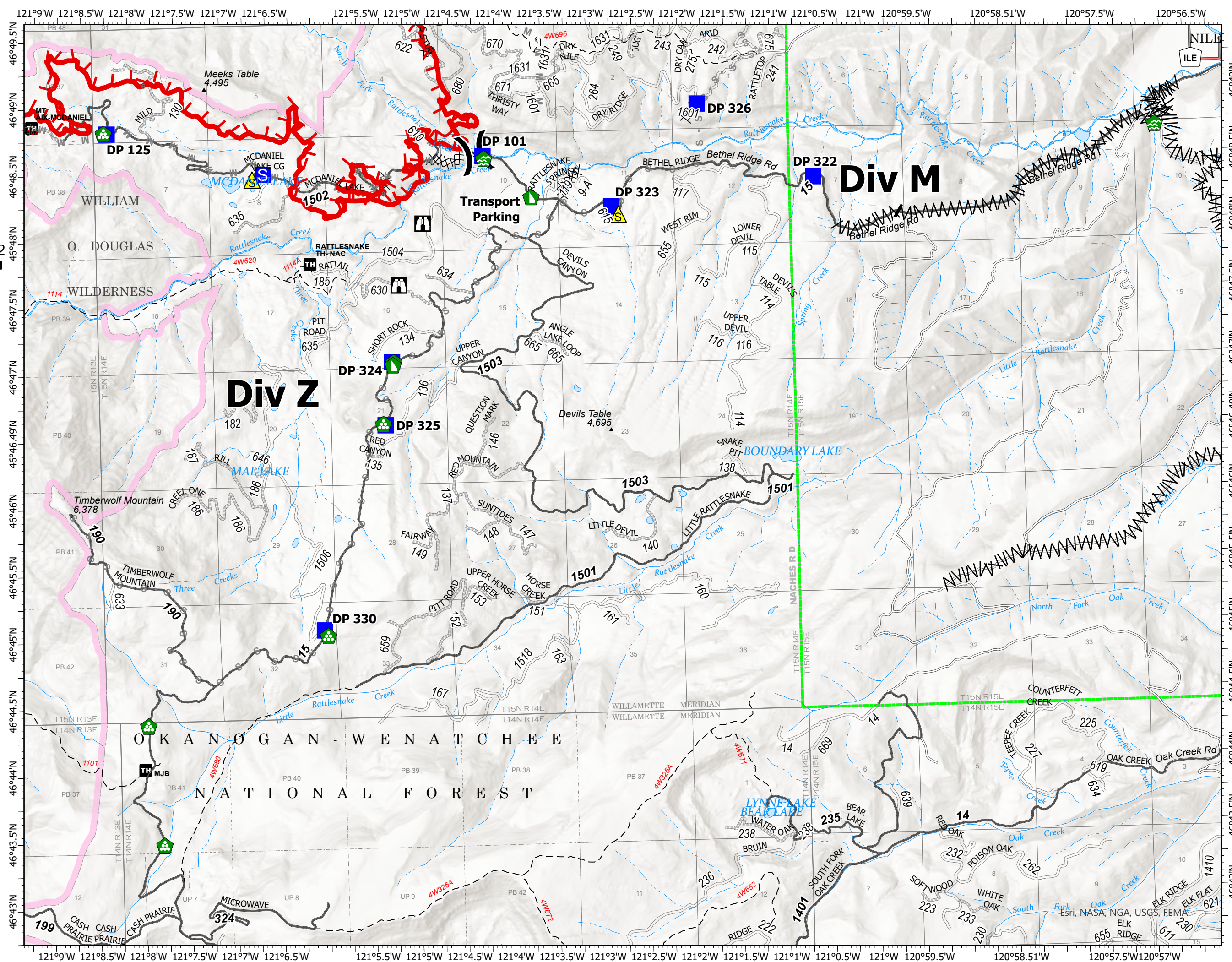
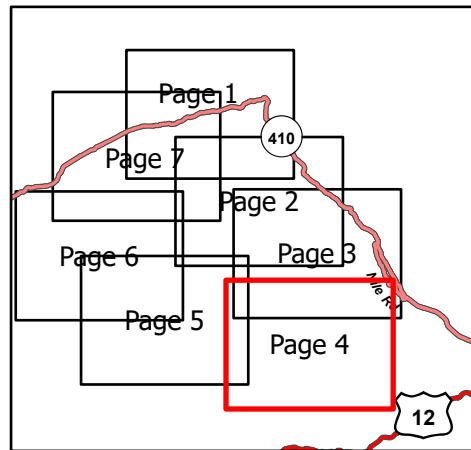
Schneider Springs
 WAOWF-000453
 8/15/2021

15,042 acres at 8/13/2021

Page 4 of 7



- (X) Division Break
- Drop Point
- Staging Area
- 🏠 Lookout
- 🌿 Water Development or Draft Site
- 🏠 Landing or Log Deck
- 🏠 Dozer Push
- ⚠️ Safety Zone
- Completed Dozer Line
- Completed Fuel Break
- Planned Dozer Line
- M - Planned Mixed Construction Line
- S - Planned Secondary Line
- 🔴 Fire Edge
- 🟢 Administrative FS Boundary
- 🟡 FS Wilderness Boundary



Transportation Map

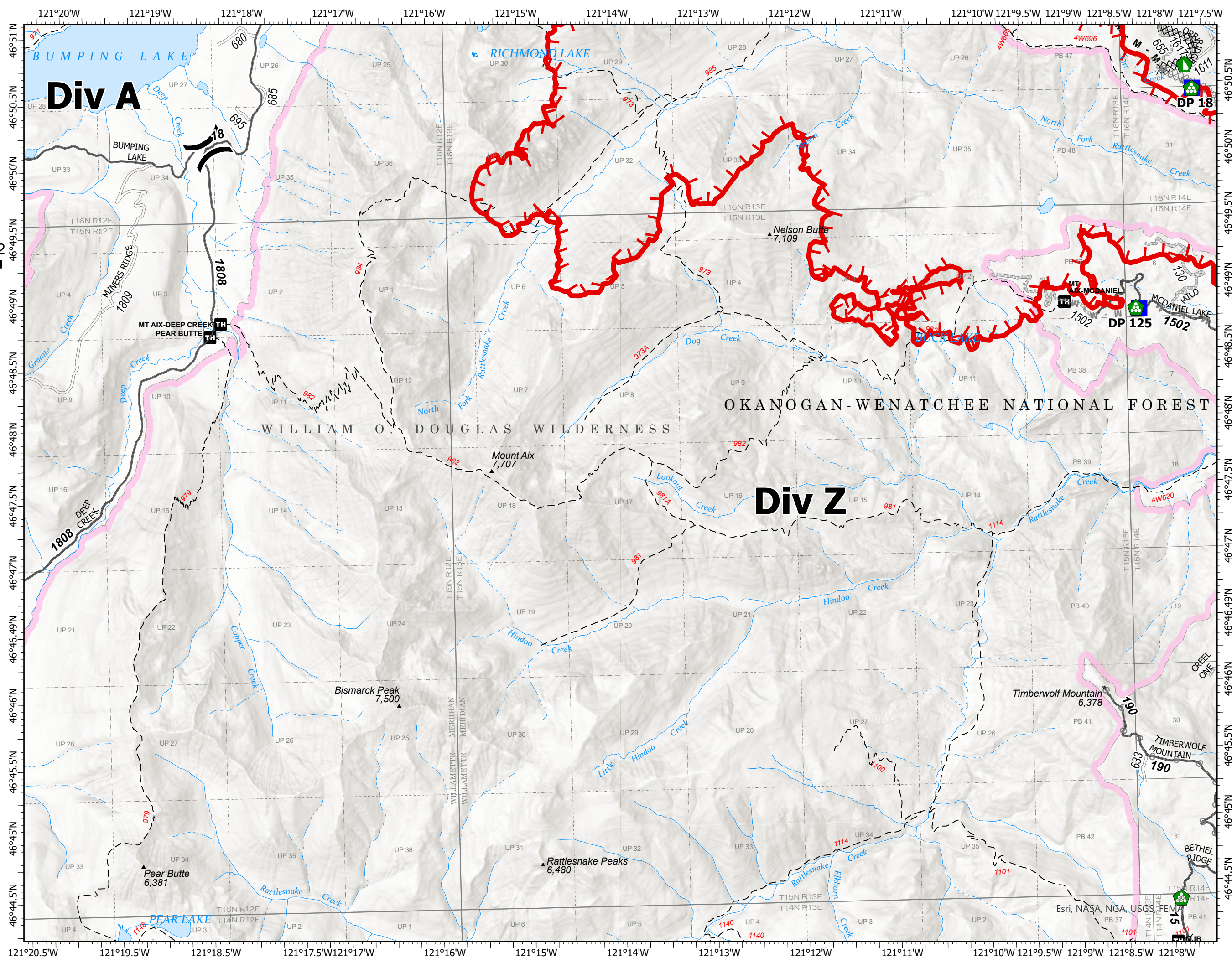
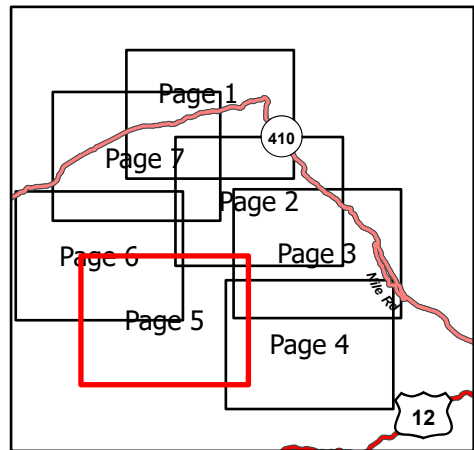
Schneider Springs
 WAOWF-000453
 8/15/2021

15,042 acres at 8/13/2021

Page 5 of 7



- (X) Division Break
- Drop Point
- 🏠 Landing or Log Deck
- 🏠 Dozer Push
- Completed Dozer Line
- M - Completed Mixed Construction Line
- R - Completed Road as Line
- Planned Dozer Line
- M - Planned Mixed Construction Line
- S - Planned Secondary Line
- 🔴 Fire Edge
- 🟢 Administrative FS Boundary
- 🟡 FS Wilderness Boundary

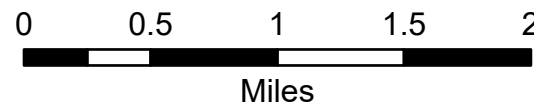


Transportation Map

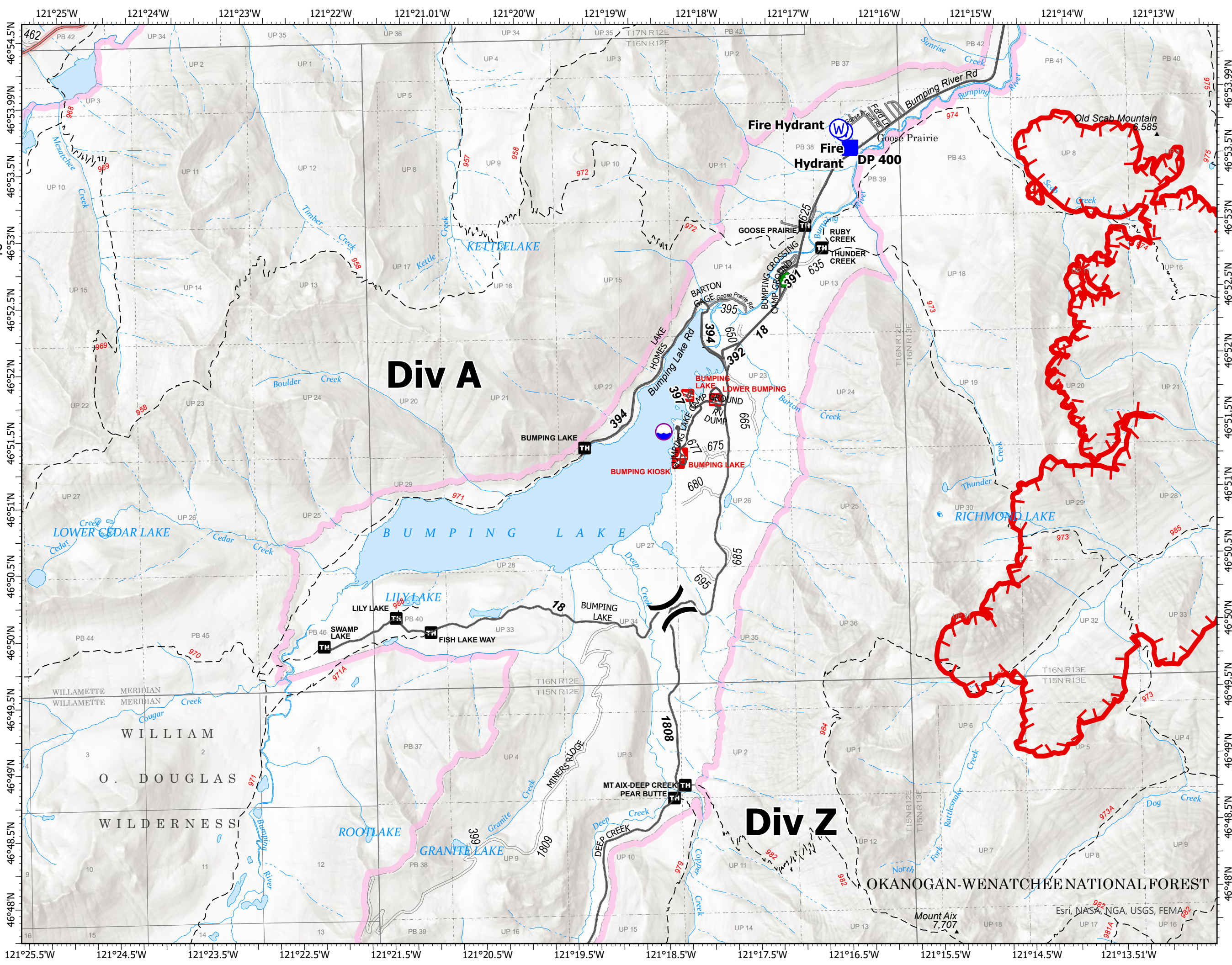
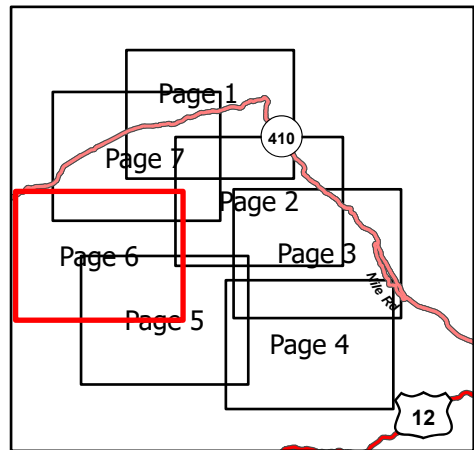
Schneider Springs
WAOWF-000453
8/15/2021

15,042 acres at 8/13/2021

Page 6 of 7



- Dip Site
- Division Break
- Drop Point
- Landing or Log Deck
- Water Source
- Fire Edge
- Administrative FS Boundary
- FS Wilderness Boundary



Transportation Map

Schneider Springs
 WAOWF-000453
 8/15/2021

15,042 acres at 8/13/2021

Page 7 of 7



- Dip Site
- Division Break
- Drop Point
- Lookout
- Value at Risk
- Landing or Log Deck
- Water Source
- Planned Fuel Break
- Fire Edge
- Administrative FS Boundary
- FS Wilderness Boundary

